



YOUNGQUIST BROTHERS, Inc

GEOPHYSICAL LOGGING DIVISION

RECEIVED TEMPERATURE LOG

SEP - 05 07:02:06

Company **WATER RESOURCE SLTS.**
Well **IW #2**
Field **NCWRF**
County **COLLIER**
State **FL**

Company **WATER RESOURCE SOLUTIONS, INC.**
Well **IW #2**
Field **NCWRF**
County **COLLIER** State **FLORIDA**
Location **SE 1/4 S27 T48S R25E**
Permanent Datum **PAD** Elevation **15'**
Log Measured From **GROUND LEVEL**
Drilling Measured From
Other Services **NONE**
Elevation **K.B. N/A
D.F. 20.5'
G.L. 15'**

Date **SEPT. 5, 2003**
Run Number **TWO**
Depth Driller **413'**
Depth Logger **413'**
Bottom Logged Interval **413'**
Top Log Interval **SURFACE**
Open Hole Size **58.5"**
Type Fluid **WATER**
Density / Viscosity **N/A**
Max. Recorded Temp. **N/A**
Estimated Cement Top **N/A**
Time Well Ready **0700**
Time Logger on Bottom **0710**
Equipment Number **103**
Location **FT. MYERS**
Recorded By **CATHEY**
Witnessed By **F. PROCTA**


Borehole Record		Tubing Record					
Run Number	Bit	From	To	Size	Weight	From	To
ONE	58.5"	SURFACE	413'				

Casing Record		Top		Bottom	
Surface String	Size	Wgt/Ft	SURFACE	8'	Bottom
Surface String	60"	375 W.T.	SURFACE		8'
Prod. String	48"	375 W.T.	SURFACE		407'
Production String					
Liner					

<<< Fold Here >>>

All interpretations are opinions based on inferences from electrical or other measurements and we cannot and do not guarantee the accuracy or correctness of any interpretation, and we shall not, except in the case of gross or willful negligence on our part, be liable or responsible for any loss, costs, damages, or expenses incurred or sustained by anyone resulting from any interpretation made by any of our officers, agents or employees. These interpretations are also subject to our general terms and conditions set out in our current Price Schedule.

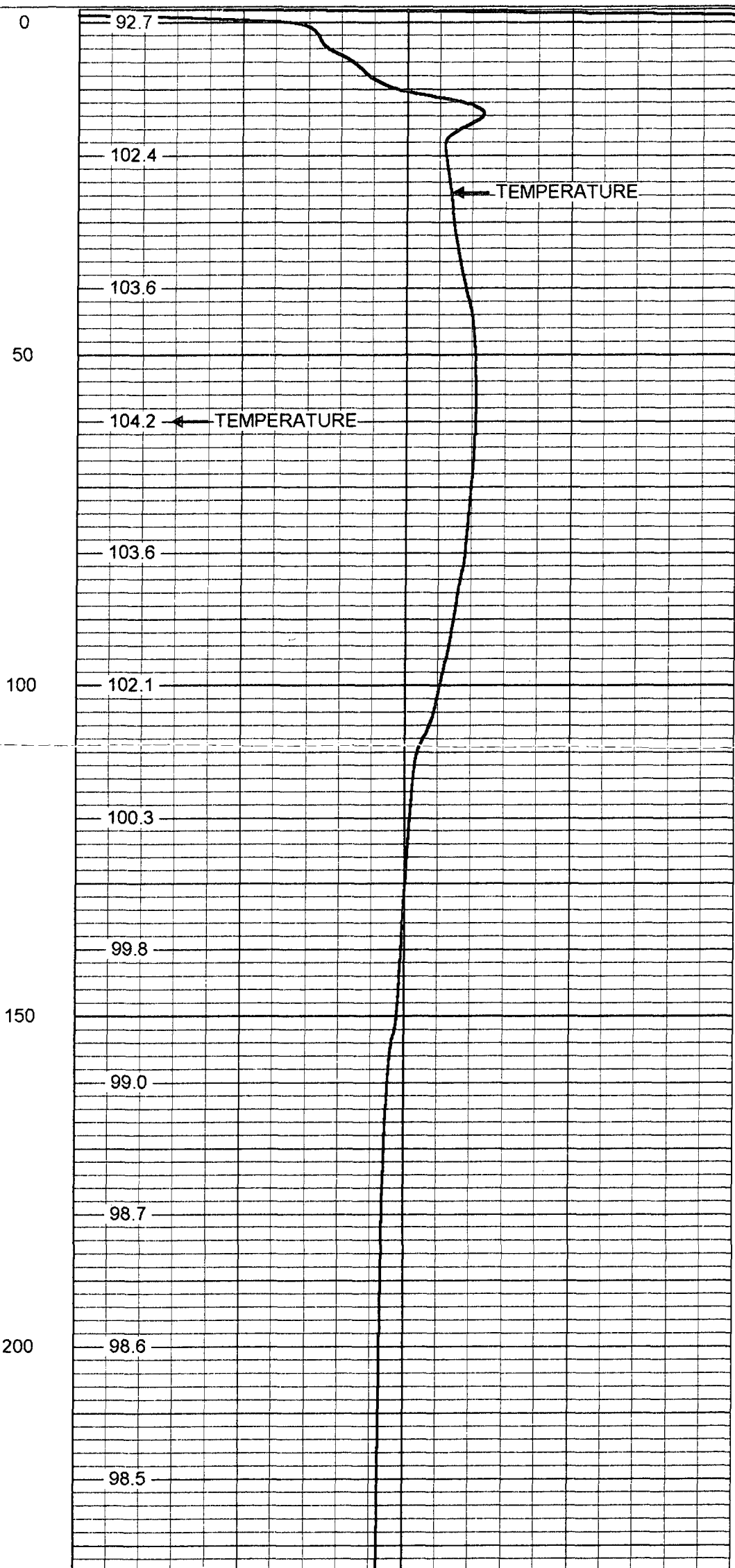
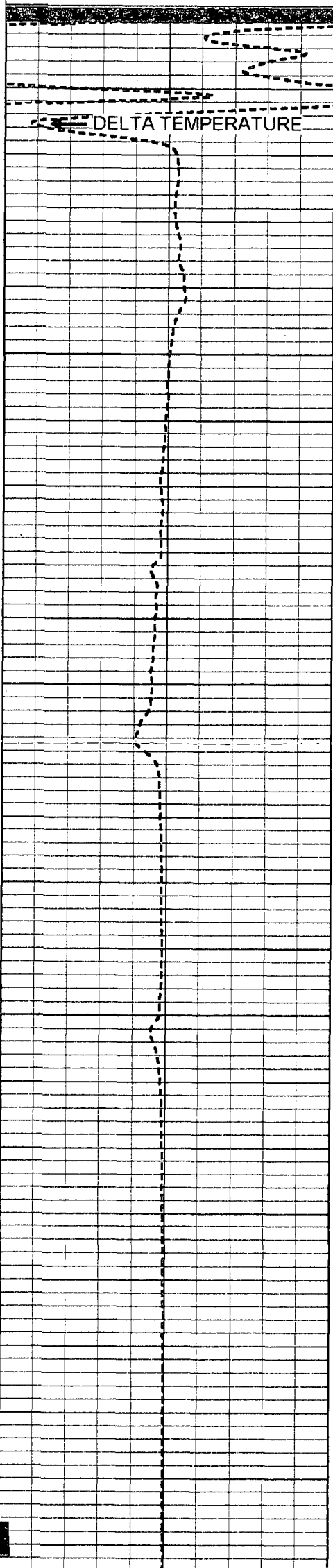
Comments

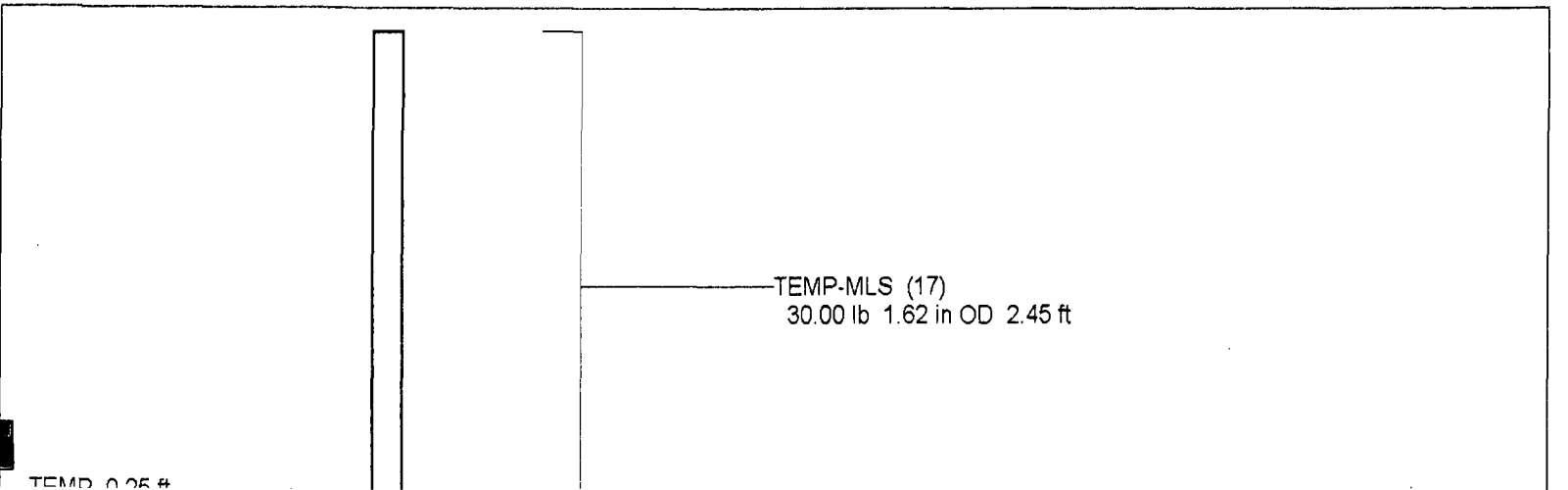
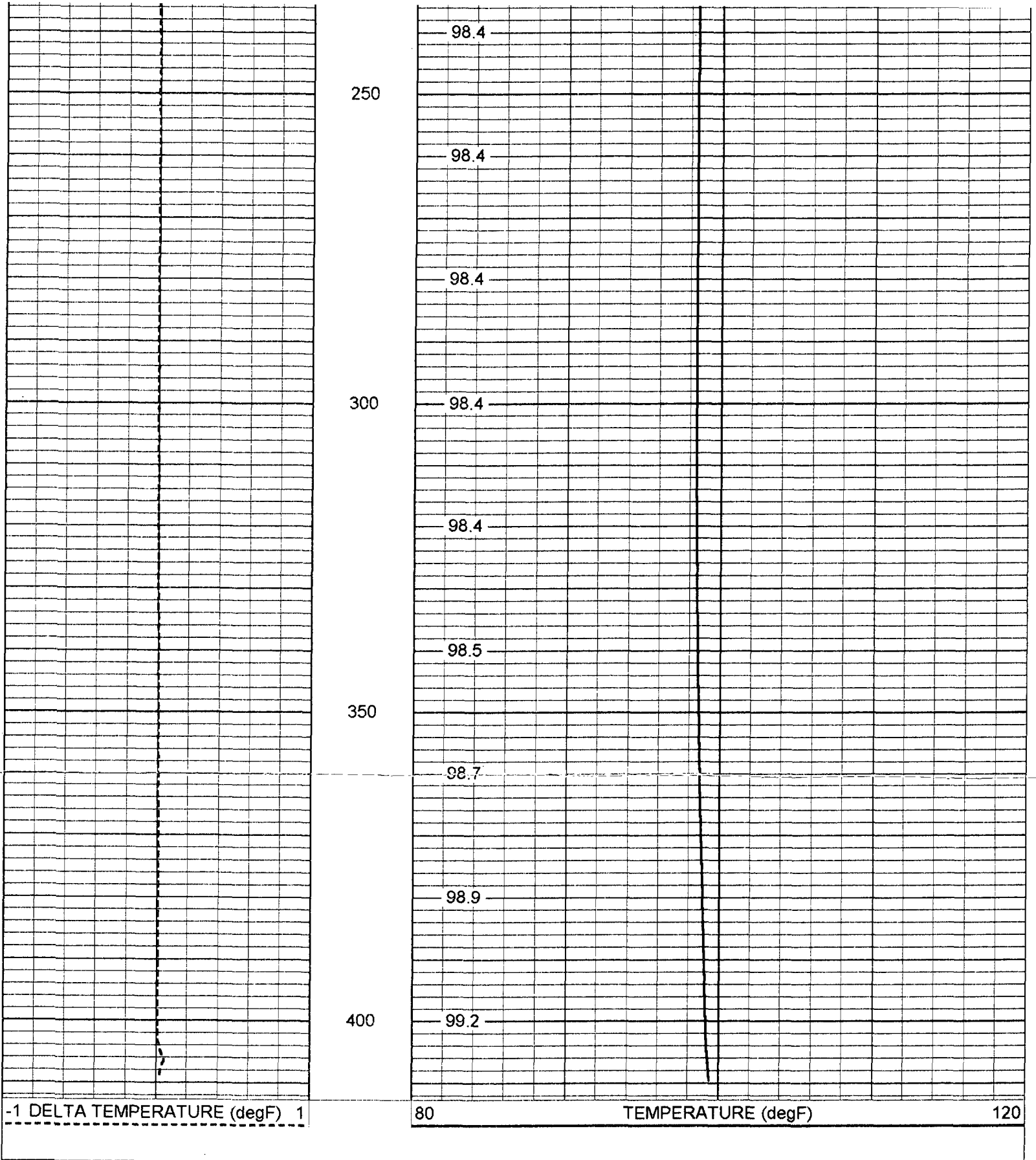


YOUNGQUIST BROTHERS, Inc
GEOPHYSICAL LOGGING DIVISION

TEMPERATURE

Database File: nciw2.db
Dataset Pathname: run2/pass1
Presentation Format: temp
Dataset Creation: Fri Sep 05 07:02:06 2003 by Log 6.2_B4





Dataset: run2/pass1
Total Length: 2.45 ft
Total Weight: 30.00 lb
O.D.: 1.62 in

Temperature Calibration Report

Serial Number: 17
Tool Model: MLS
Performed: Fri Apr 04 14:49:15 2003

Point #	Reading		Reference	
1	320	cps	32	degF
2	700	cps	70	degF
3	2000	cps	200	degF