



**YOUNGQUIST  
BROTHERS, Inc**

GEOPHYSICAL LOGGING DIVISION

**HIGH RESOLUTION  
TEMPERATURE  
LOG**  
DEEP - SURFACE

Company **WATER RESOURCE SLTS.**  
Well **IW #2**  
Field **NCWRF**  
County **COLLIER**  
State **FL**

Company **WATER RESOURCE SOLUTIONS, INC.**  
Well **IW #2**  
Field **NCWRF**  
County **COLLIER** State **FLORIDA**  
Location **SE 1/4 S27 T48S R25E**

Permanent Datum **PAD** Elevation **15'**  
Log Measured From **GROUND LEVEL**  
Drilling Measured From **Elevation**  
Other Services **TRACER SURVEY**  
K.B. N/A  
D.F. 20.5'  
G.L. 15'

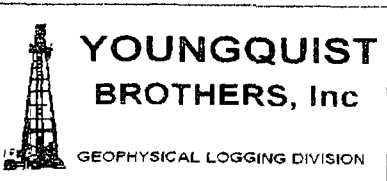
Date **JAN 29 2004**  
Run Number **RTS**  
Depth Driller **3250'**  
Depth Logger **2776'**  
Bottom Logged Interval **2776'**  
Top Log Interval **SURFACE**  
Open Hole Size **22"**  
Type Fluid **WATER**  
Density / Viscosity **N/A**  
Max. Recorded Temp **92 F**  
Estimated Cement Top **NA**  
Time Well Ready **0700**  
Time Logger on Bottom **0800**  
Equipment Number **103**  
Location **FT MYERS**  
Recorded By **CATHEY**  
Witnessed By **F. PROCTA**

Borehole Record		Tubing Record				
Run Number	Bit From	To	Size	Weight	From	To
ONE	58.5"	SURFACE	413'	FIVE	32.5"	2587'
TWO	12.25"	413'	NINE	22"	CASING	3250'
THREE	47"	407'	1500'			
FOUR	12.25"	CASING	2939'			

Casing Record		Wgt/H	
Surface String	Size	Wgt/H	Bottom
Surface String	60"	375 W.T.	8'
Prot. String	48"	375 W.T.	407'
Production String	42"	375 W.T.	1425'
Liner	24"	5 W.T.	2582'

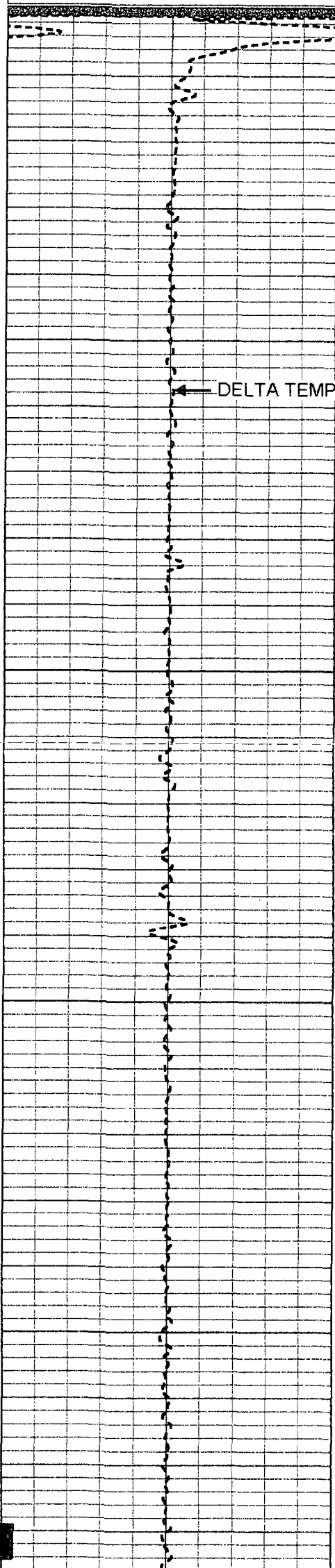
All interpretations are opinions based on inferences from electrical or other measurements and we cannot and do not guarantee the accuracy or correctness of any interpretation, and we shall not, except in the case of gross or willful negligence on our part, be liable or responsible for any loss, costs, damages, or expenses incurred or sustained by anyone resulting from any interpretation made by any of our officers, agents or employees. These interpretations are also subject to our general terms and conditions set out in our current Price Schedule.

**Comments**



**TEMPERATURE**

Database File: **nciw2rts.db**  
Dataset Pathname: **rts/pass1**  
Presentation Format: **temp**  
Dataset Creation: **Thu Jan 29 07:12:58 2004 by Log 6.2\_B4**



0

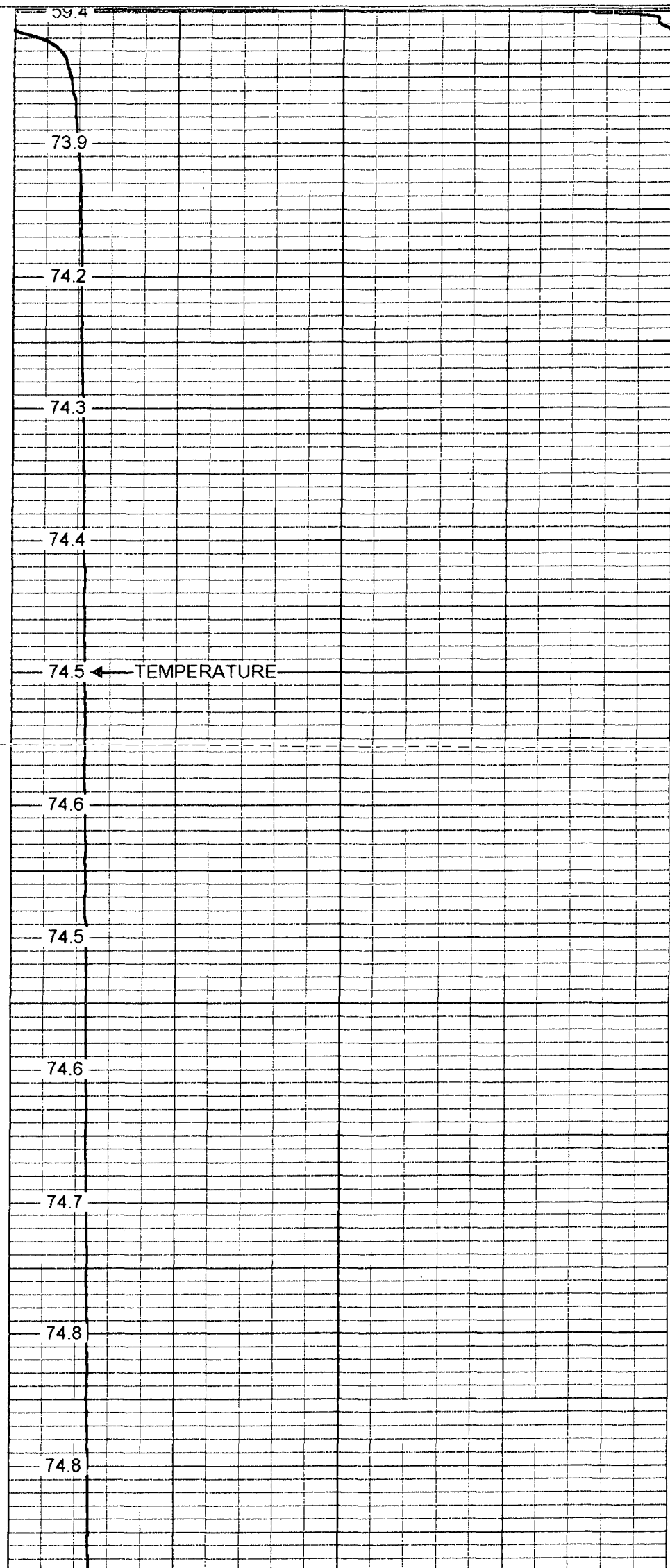
50

100

150

200

DELTA TEMPERATURE



70

73.9

74.2

74.3

74.4

74.5

74.6

74.5

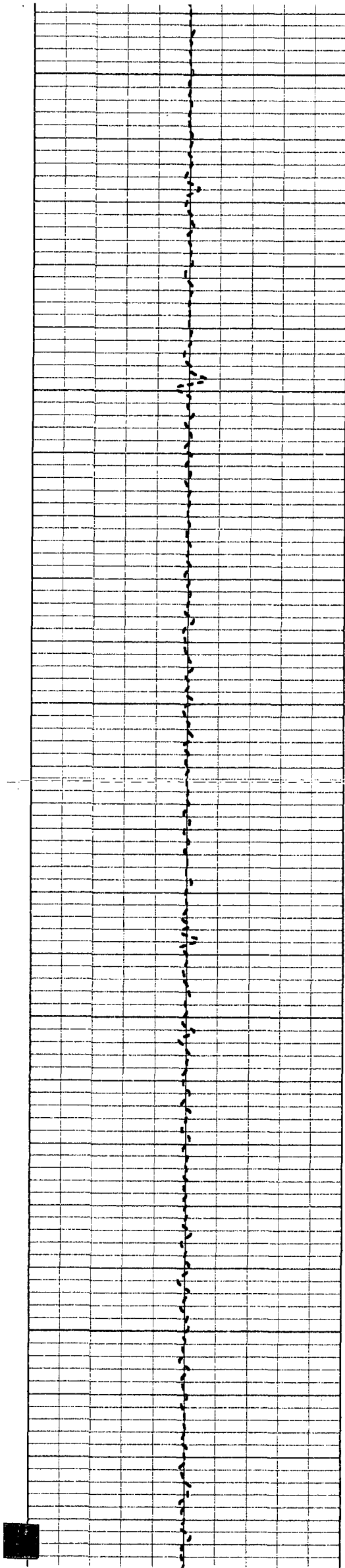
74.6

74.7

74.8

74.8

TEMPERATURE



250

74.9

74.9

75.0

300

75.1

75.1

75.2

350

75.2

75.3

400

75.4

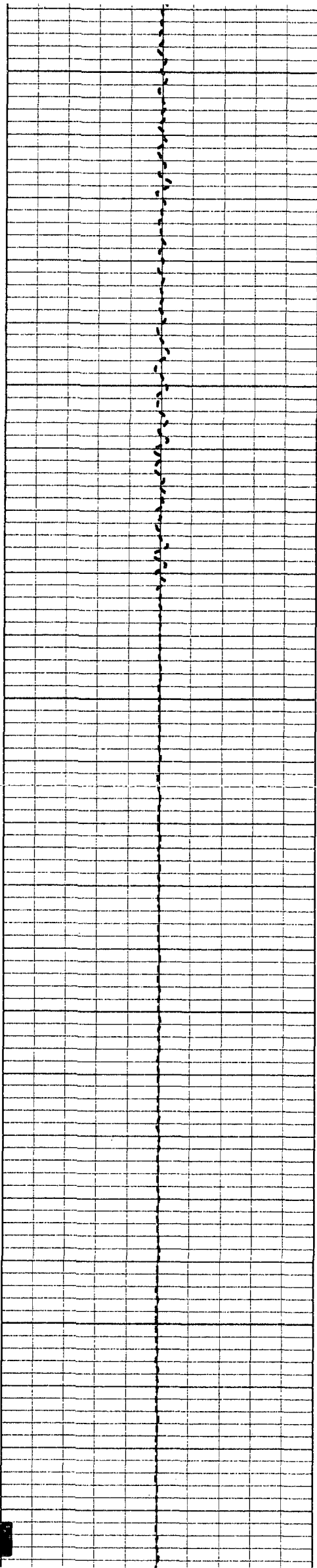
75.4

75.5

450

75.5

75.6



500

75.6

75.7

75.8

550

75.9

75.8

600

75.9

75.9

76.0

650

76.0

76.1

700

76.1

76.2



750

76.3

76.3

800

76.3

76.4

76.5

850

76.5

76.5

900

76.6

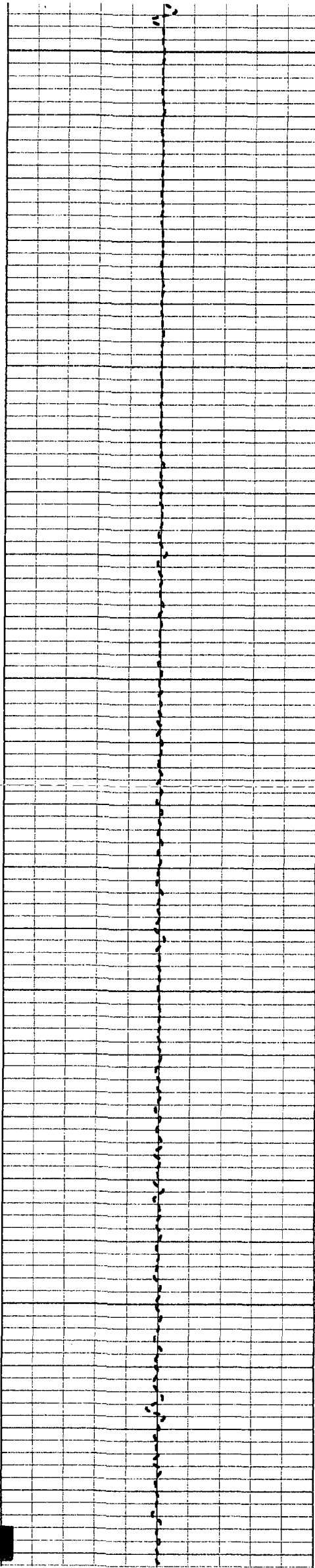
76.6

76.7

950

76.7

76.8



1000

76.8

76.9

76.9

1050

77.0

77.0

1100

77.1

77.1

77.2

1150

77.3

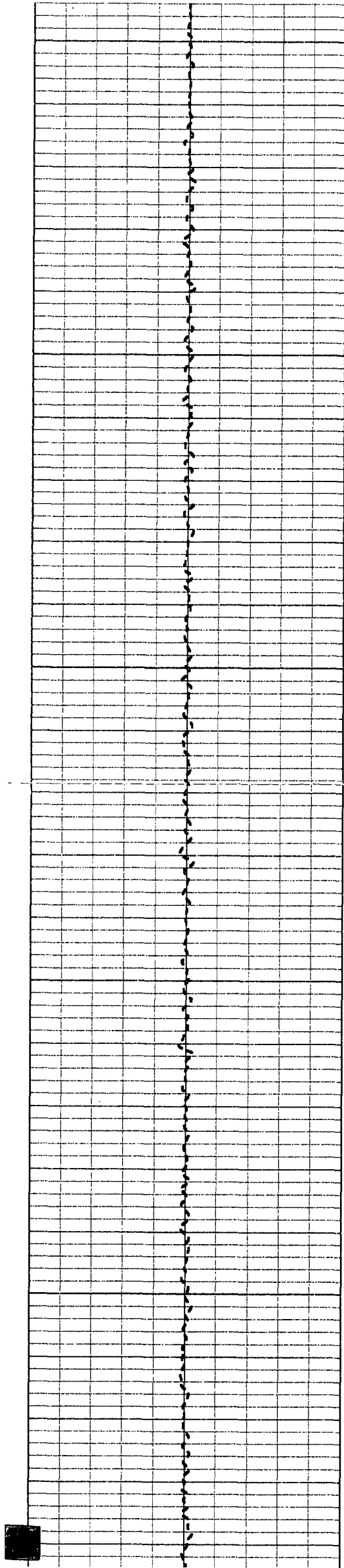
77.3

1200

77.4

77.4

77.5



1250

77.5

77.6

1300

77.6

77.7

77.8

1350

77.9

77.8

1400

77.9

78.0

78.1

1450

78.3

78.4



1500

1550

1600

1650

1700

78.5

78.4

78.4

78.5

78.6

78.6

78.7

79.4

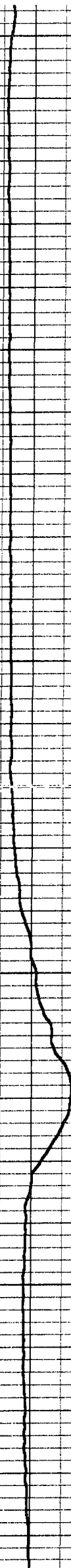
81.3

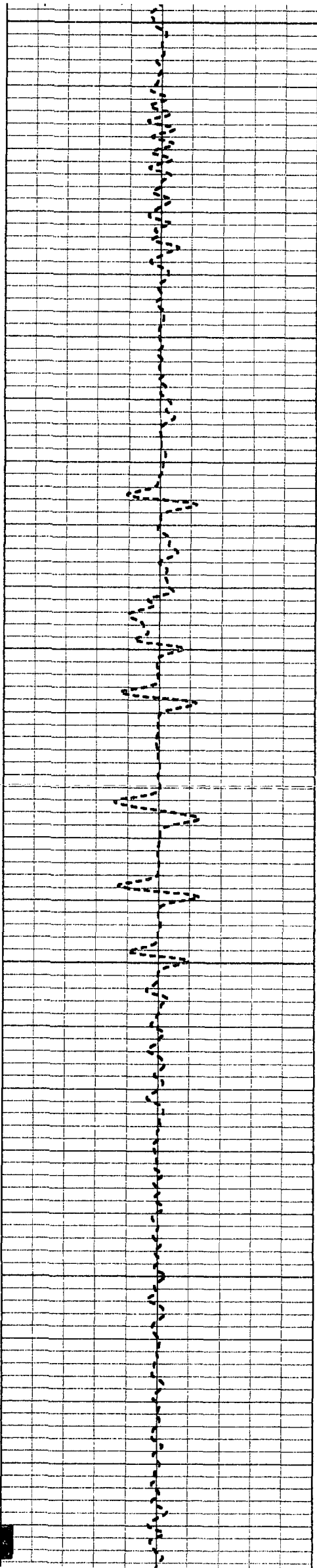
80.7

79.6

79.7

79.9





1750

79.8

79.8

1800

79.9

80.3

80.8

1850

80.3

80.3

1900

80.2

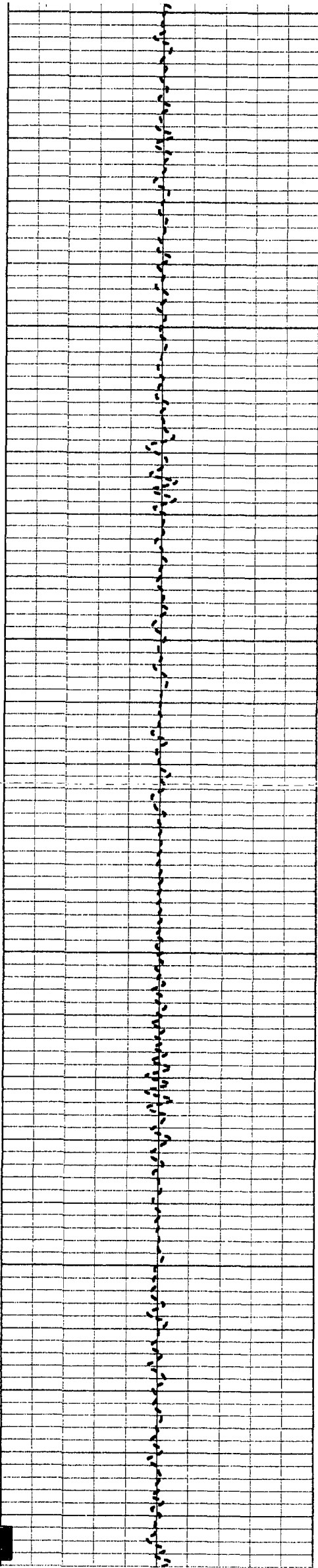
80.3

80.4

1950

80.4

80.4



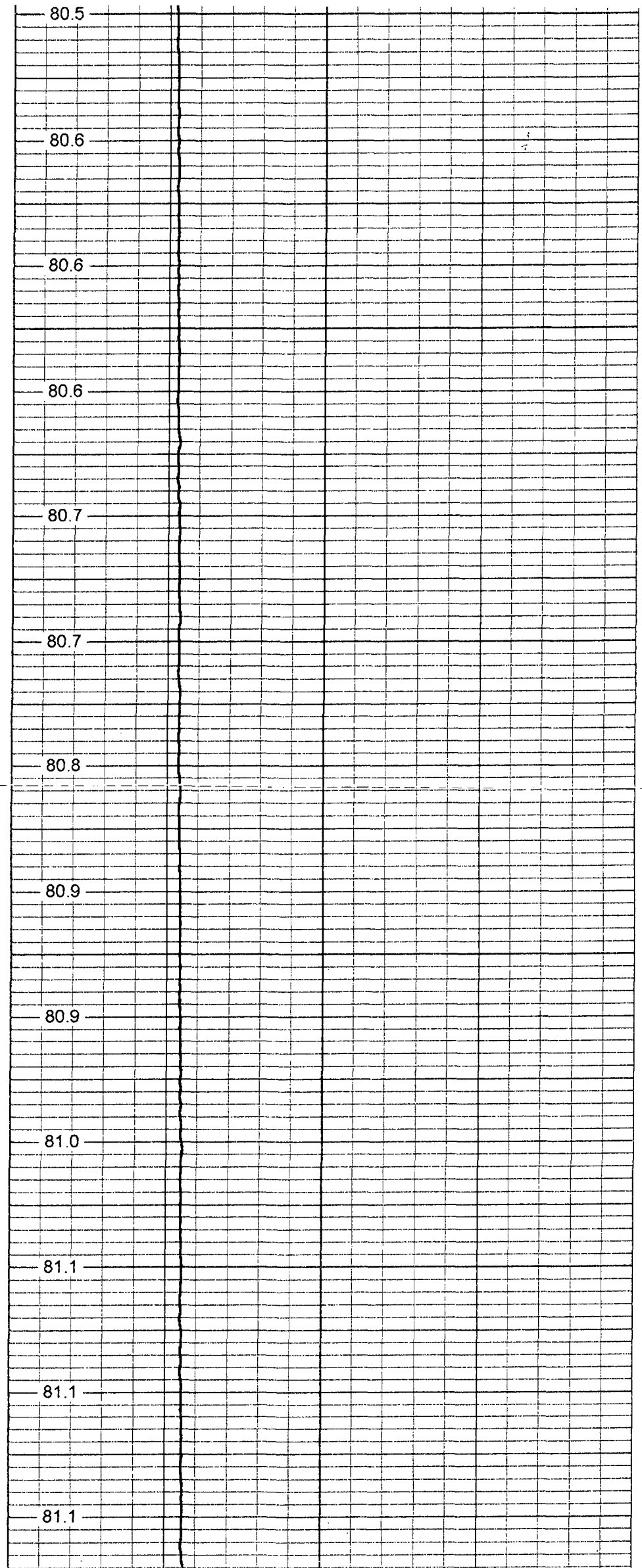
2000

2050

2100

2150

2200



2200

2300

2350

2400

2450

2500

81.2

81.2

81.3

81.4

81.4

81.5

81.5

81.8

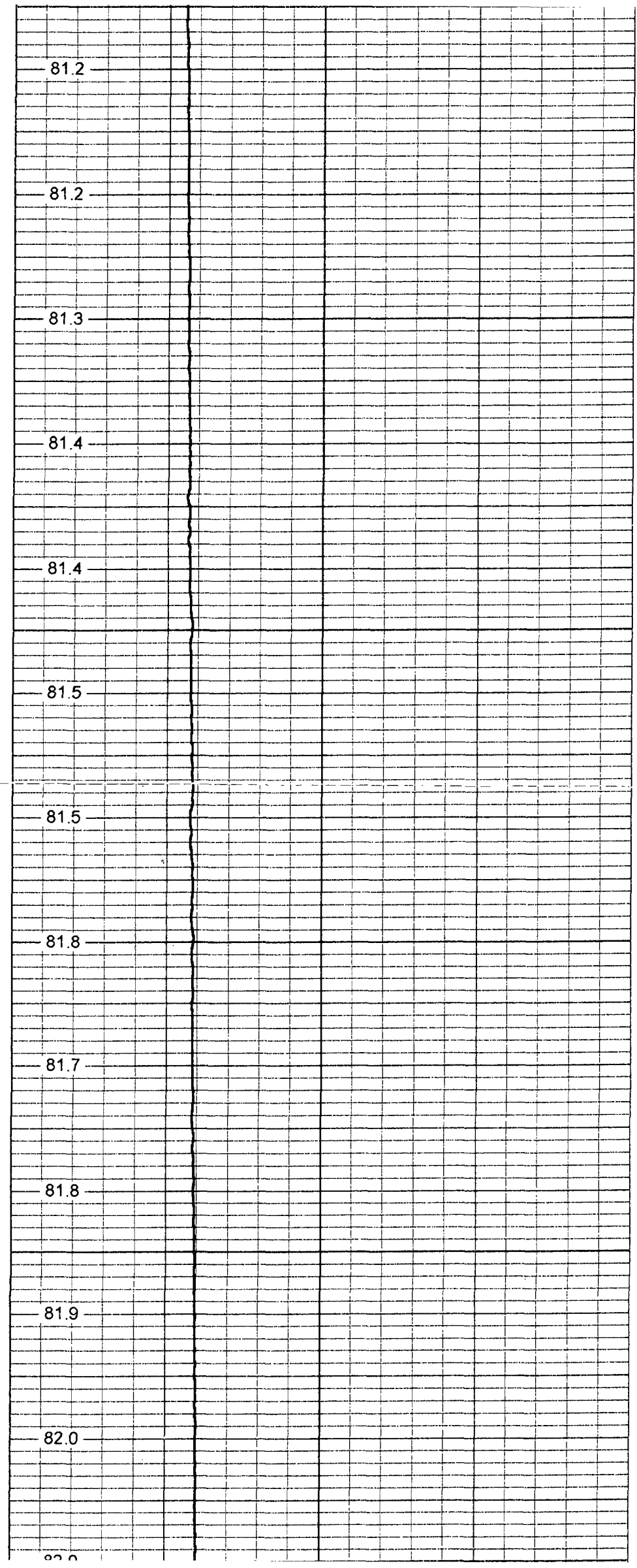
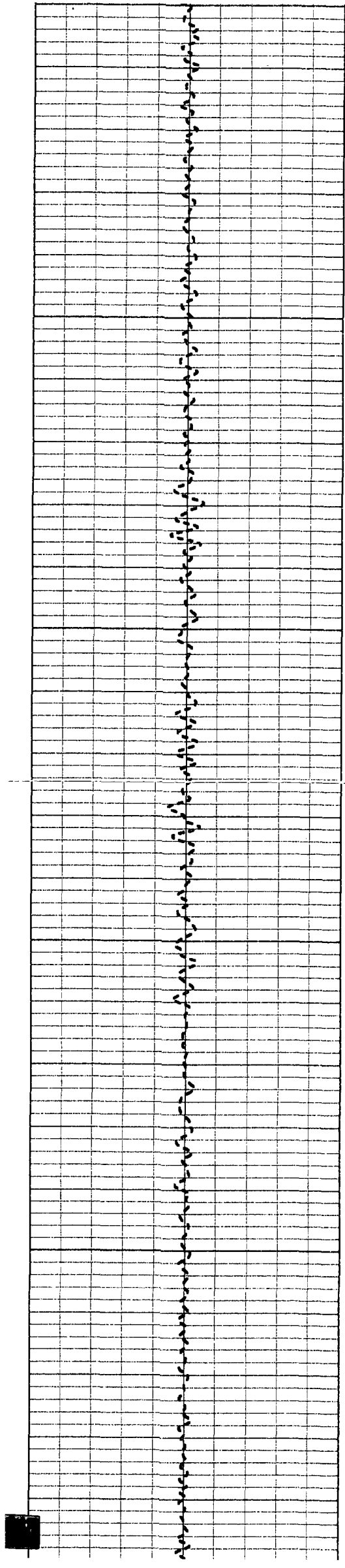
81.7

81.8

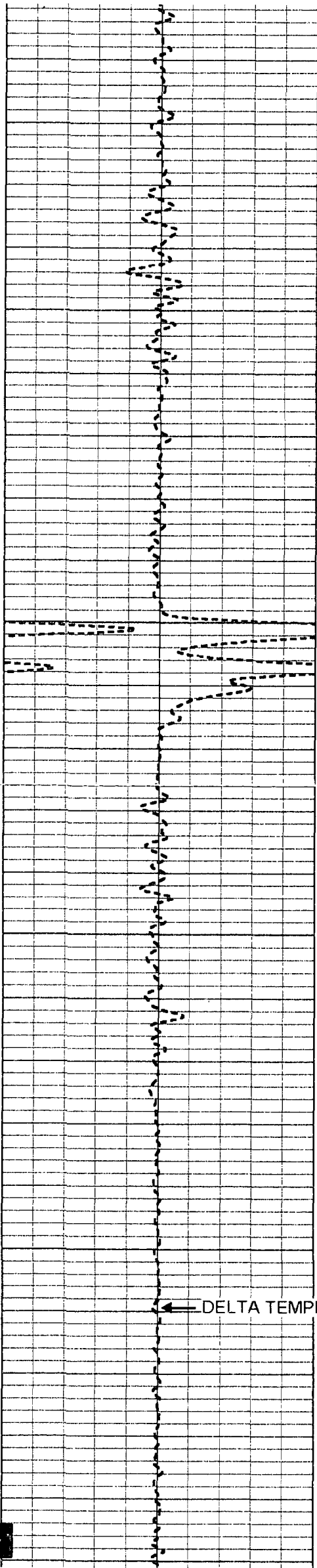
81.9

82.0

82.0







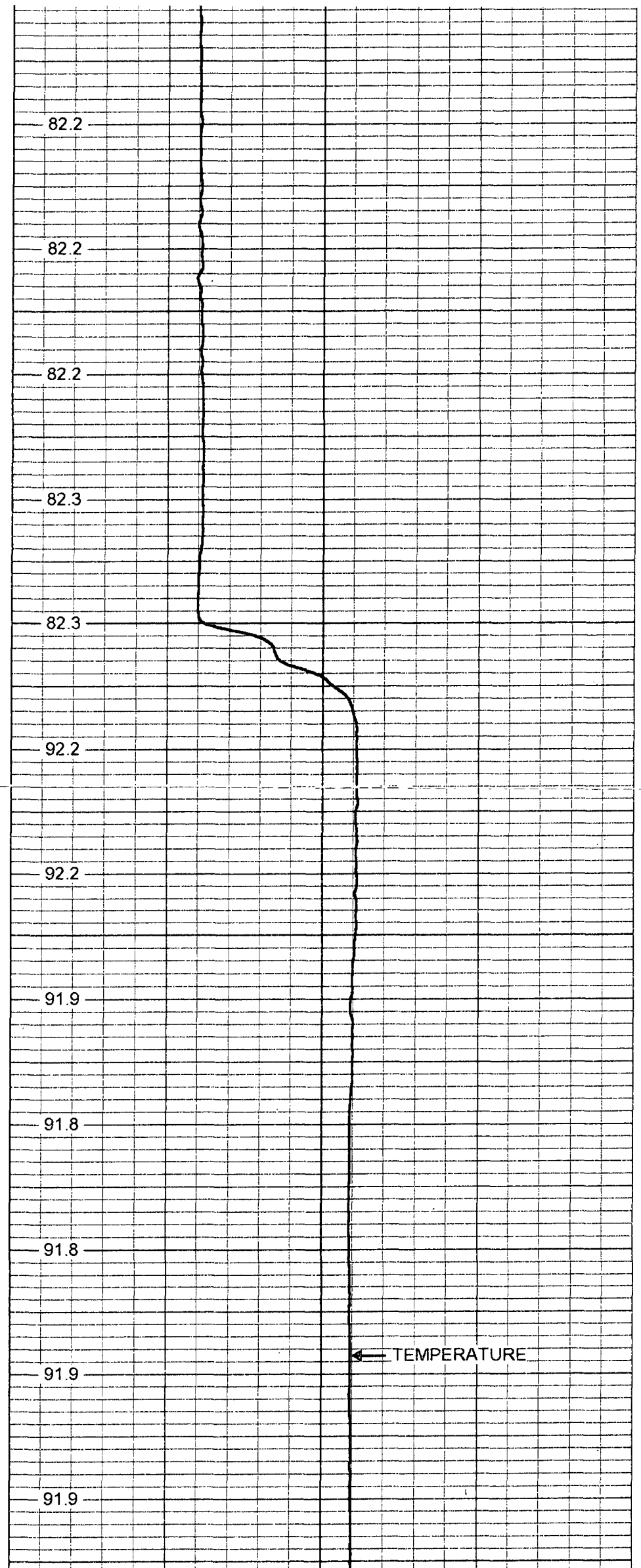
2550

2600

2650

2700

2750



82.2

82.2

82.2

82.3

82.3

92.2

92.2

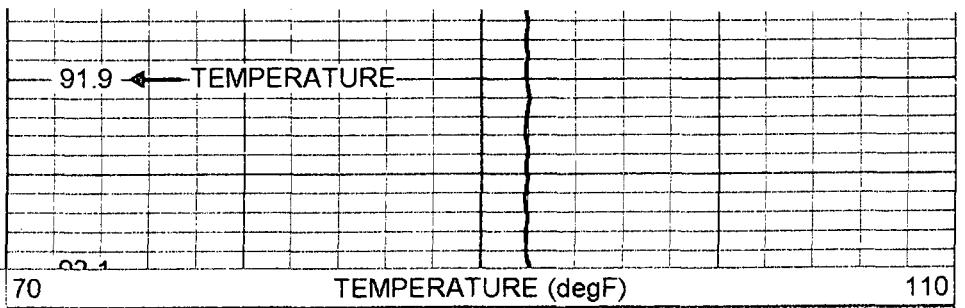
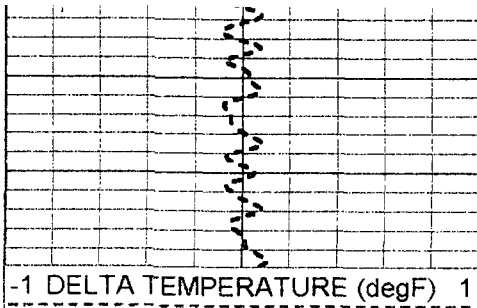
91.9

91.8

91.8

91.9

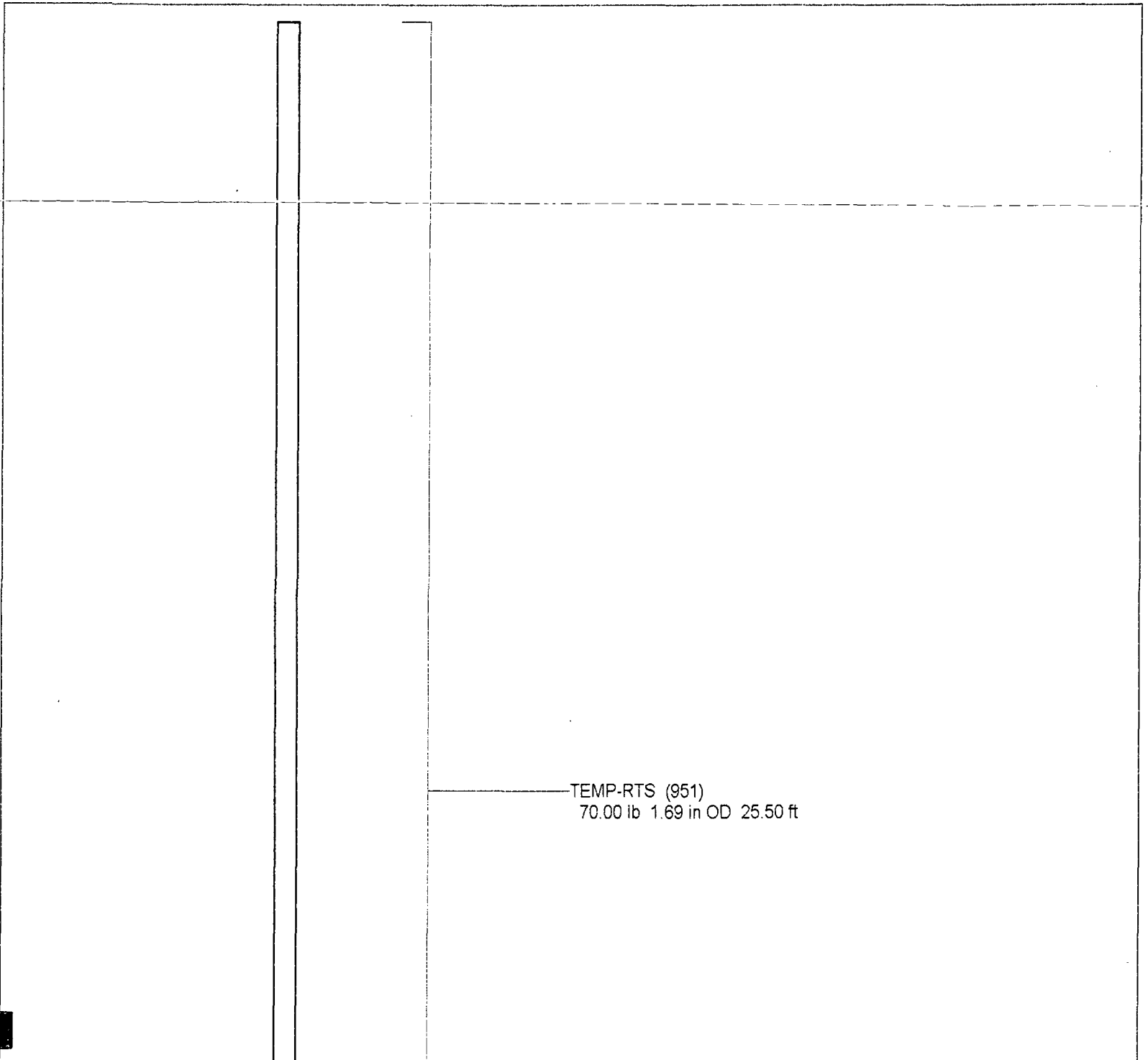
91.9



Temperature Calibration Report

Serial Number: 951  
 Tool Model: RTS  
 Performed: Wed Jul 02 15:32:33 2003

Point #	Reading		Reference	
1	420.621	cps	41	degF
2	849.07	cps	81	degF
3	1618.63	cps	157	degF



TEMP-RTS (951)  
 70.00 lb 1.69 in OD 25.50 ft

TEMP 0.10 ft

Dataset:	rts/pass1
Total Length:	25.50 ft
Total Weight:	70.00 lb
O.D.	1.69 in