

**HIGH
RESOLUTION
TEMPERATURE
LOG**

RECEIVED - DEEP.
JUL 31 2008
GOUTH DISTRICT

| | | | | | | | | | | | | |
|------------------------|-------------|------------------------|--------------|--------|-------|-------------------|-------|------------------------|--------------|-------|---------|--|
| Company | CDM | Company | CDM | Well | IW #1 | Field | NCWRF | County | COLLIER | State | FLORIDA | |
| Well | IW #1 | Location: | SEC | TWP | RGE | Elevation | 15' | Other Services | DHTVS RTS | | | |
| Field | NCWRF | Permanent Datum | PAD | PAD | PAD | Log Measured From | PAD | Drilling Measured From | Elevation | | | |
| County | COLLIER | API #: | | | | | | | | | | |
| State | FLORIDA | Date | 14-JULY-2008 | | | | | | | | | |
| Run Number | MIT 08 | Run Number | | | | | | | | | | |
| Depth Driller | 3250' | Depth Driller | | | | | | | | | | |
| Depth Logger | 2630' | Depth Logger | | | | | | | | | | |
| Bottom Logged Interval | 2630' | Bottom Logged Interval | | | | | | | | | | |
| Top Log Interval | SURFACE | Top Log Interval | | | | | | | | | | |
| Open Hole Size | 22" | Open Hole Size | | | | | | | | | | |
| Type Fluid | WATER | Type Fluid | | | | | | | | | | |
| Density / Viscosity | NA | Density / Viscosity | | | | | | | | | | |
| Max. Recorded Temp. | 93 DEGF | Max. Recorded Temp. | | | | | | | | | | |
| Estimated Cement Top | N/A | Estimated Cement Top | | | | | | | | | | |
| Time Well Ready | 0100 | Time Well Ready | | | | | | | | | | |
| Time Logger on Bottom | 0500 | Time Logger on Bottom | | | | | | | | | | |
| Equipment Number | 102 | Equipment Number | | | | | | | | | | |
| Location | FT MYERS | Location | | | | | | | | | | |
| Recorded By | LEE | Recorded By | | | | | | | | | | |
| Witnessed By | J ABBOTT 11 | Witnessed By | | | | | | | | | | |
| Recorded By | LEE | Recorded By | | | | | | | | | | |
| Witnessed By | J ABBOTT 11 | Witnessed By | | | | | | | | | | |
| Run Number | 22" | Run Number | | | | | | | | | | |
| Bit | CASING | Bit | | | | | | | | | | |
| From | 3350' | From | | | | | | | | | | |
| To | 3350' | To | | | | | | | | | | |
| Run Hrs | | Run Hrs | | | | | | | | | | |
| Bit | | Bit | | | | | | | | | | |
| From | | From | | | | | | | | | | |
| To | | To | | | | | | | | | | |
| Casing Record | Size | Wgvt | Top | Bottom | | | | | | | | |
| Surface String | 24" | 500 W/T | SURFACE | 2575' | | | | | | | | |
| Prot. String | | | | | | | | | | | | |
| Production String | | | | | | | | | | | | |
| Liner | | | | | | | | | | | | |

<<< Fold Here >>>

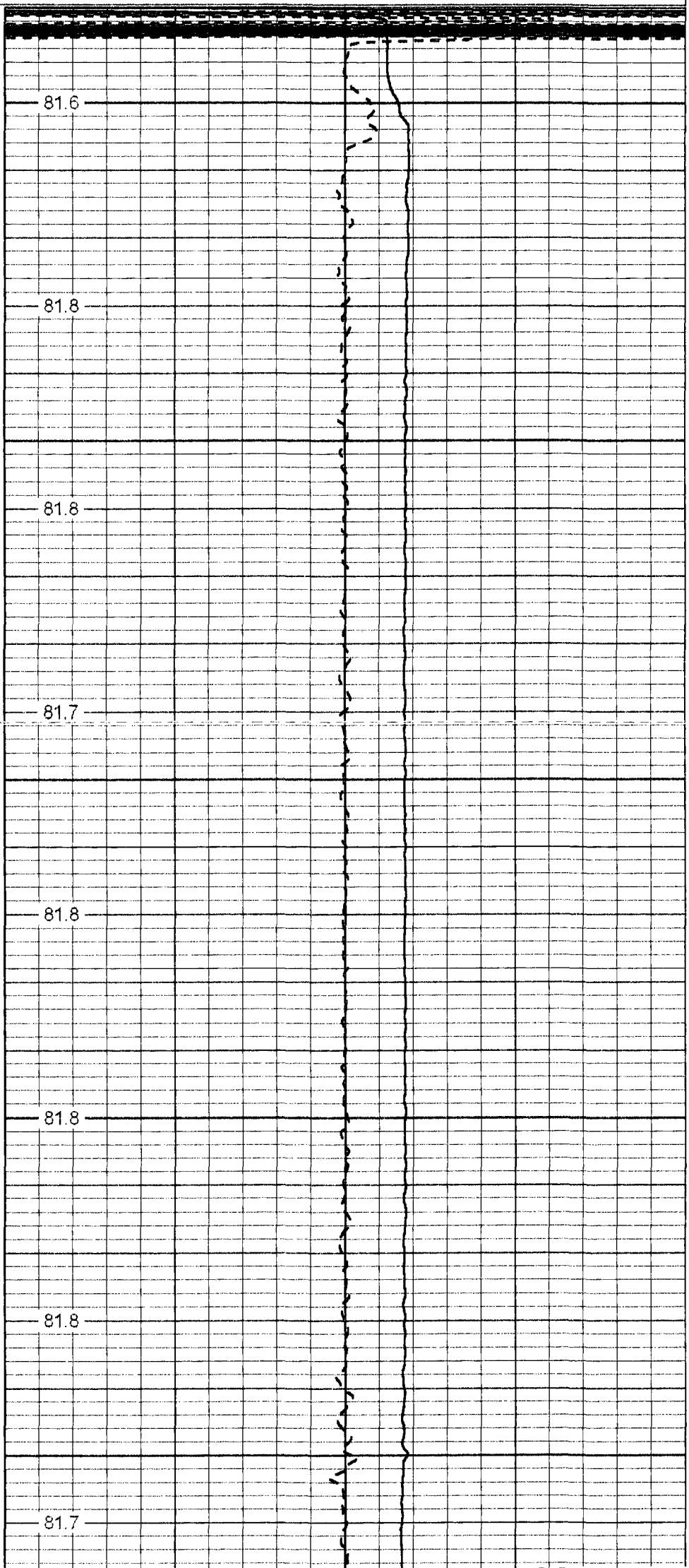
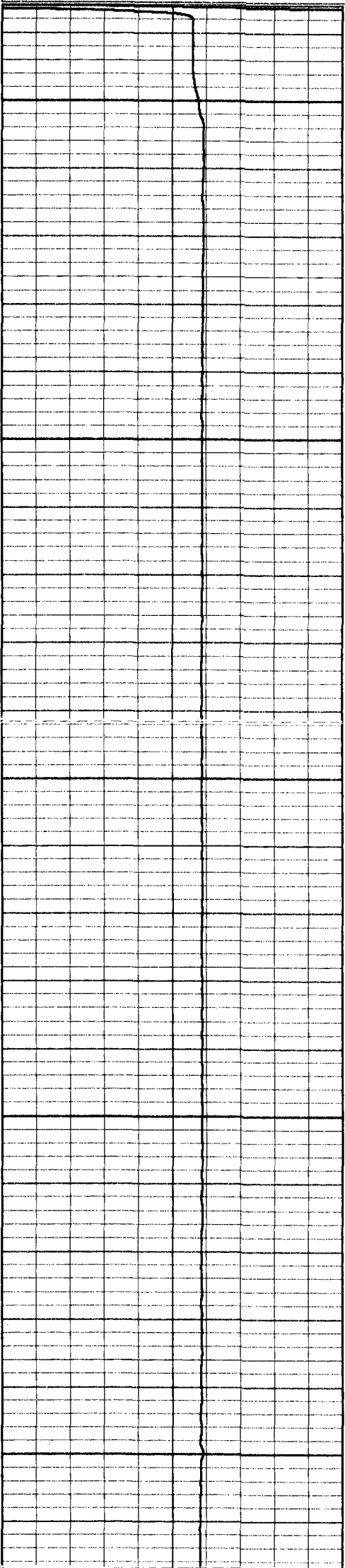
All interpretations are opinions based on inferences from electrical or other measurements and we cannot and do not guarantee the accuracy or correctness of any interpretation, and we shall not, except in the case of gross or willful negligence on our part, be liable or responsible for any loss, costs, damages, or expenses incurred or sustained by anyone resulting from any interpretation made by any of our officers, agents or employees. These interpretations are also subject to our general terms and conditions set out in our current Price Schedule.

Comments

EJECTOR 13.5' FROM TOOL BOTTOM.

TEMPERATURE

Temperature (degF)



0

81.6

50

81.8

81.8

100

81.7

81.8

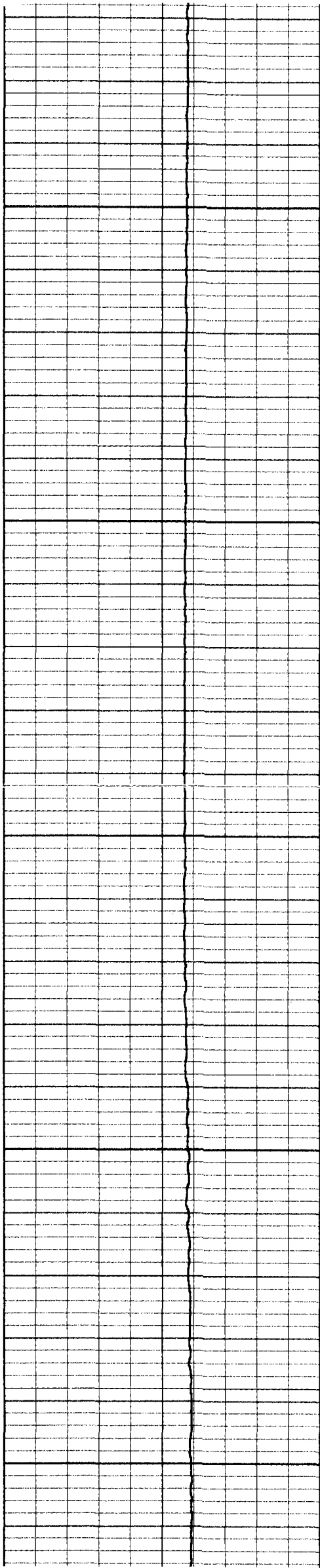
150

81.8

81.8

200

81.7



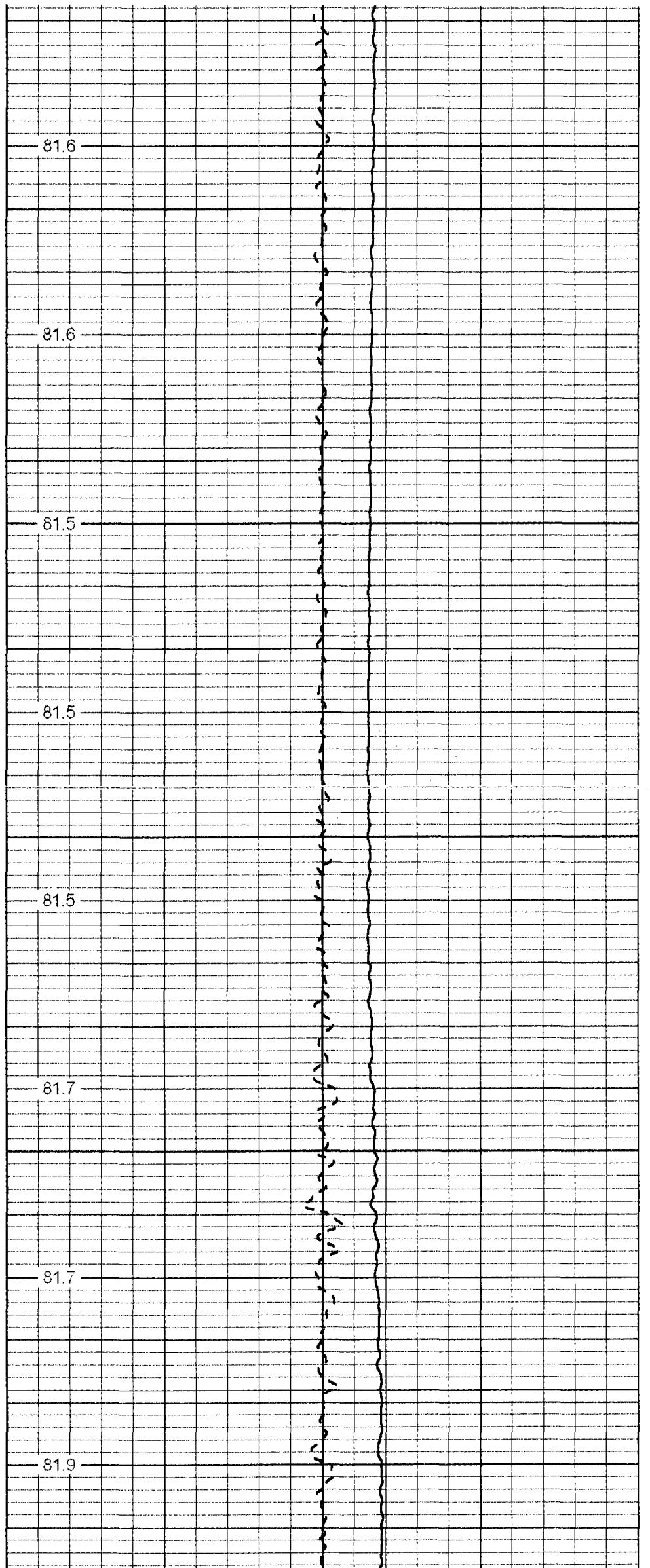
250

300

350

400

450



81.6

81.6

81.5

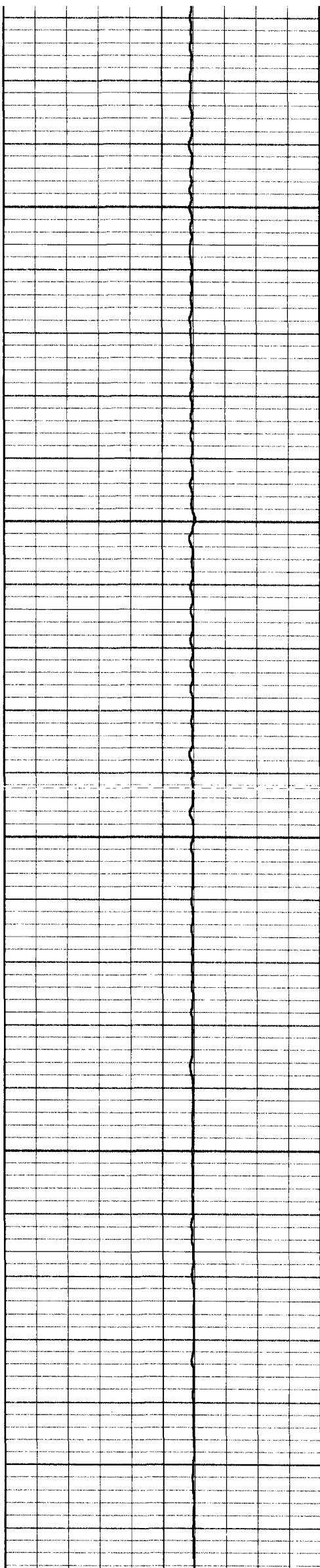
81.5

81.5

81.7

81.7

81.9



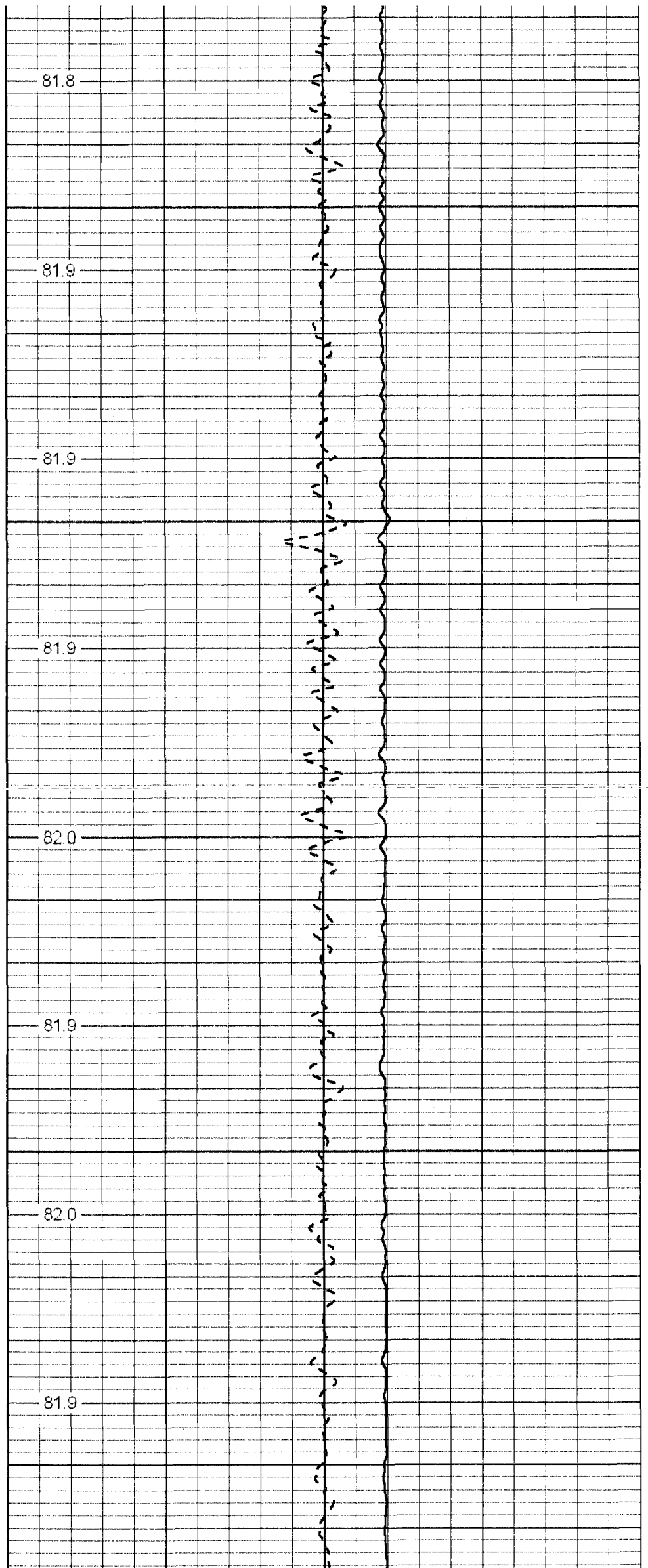
500

550

600

650

700



81.8

81.9

81.9

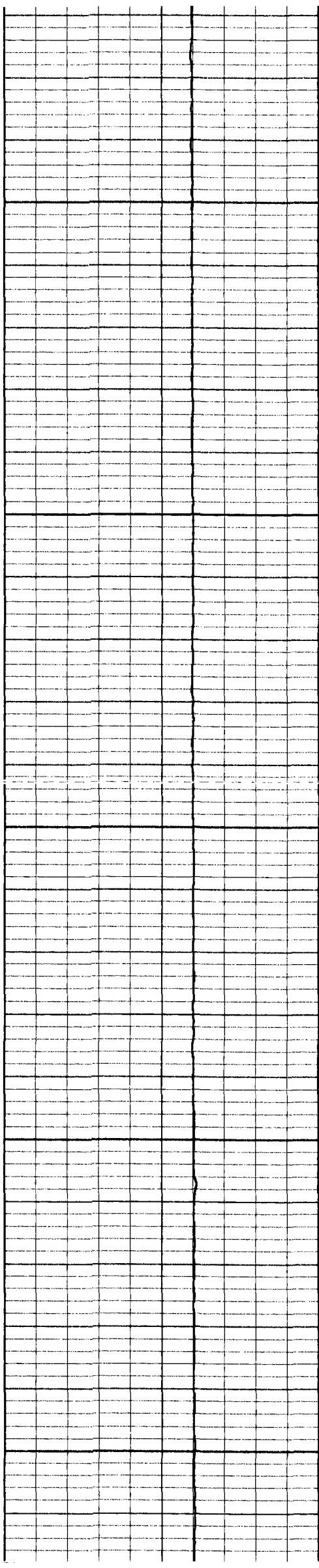
81.9

82.0

81.9

82.0

81.9



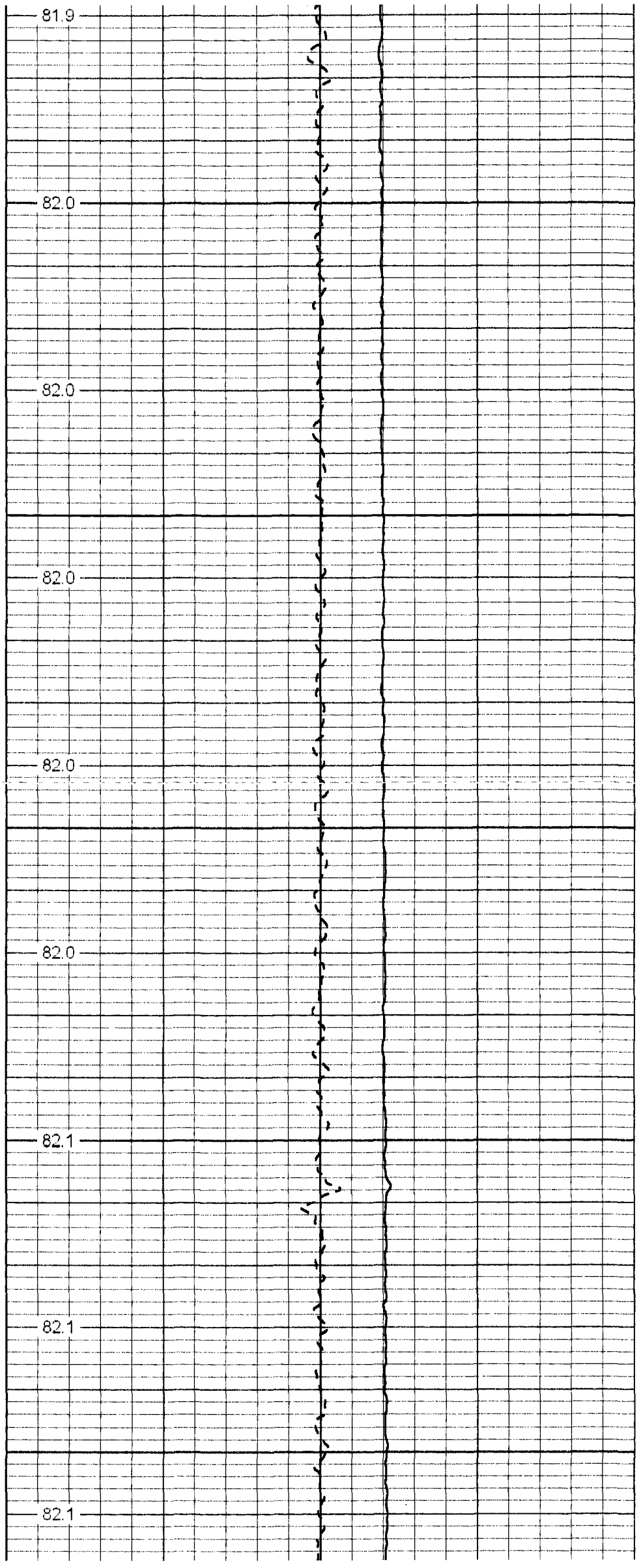
750

800

850

900

950



81.9

82.0

82.0

82.0

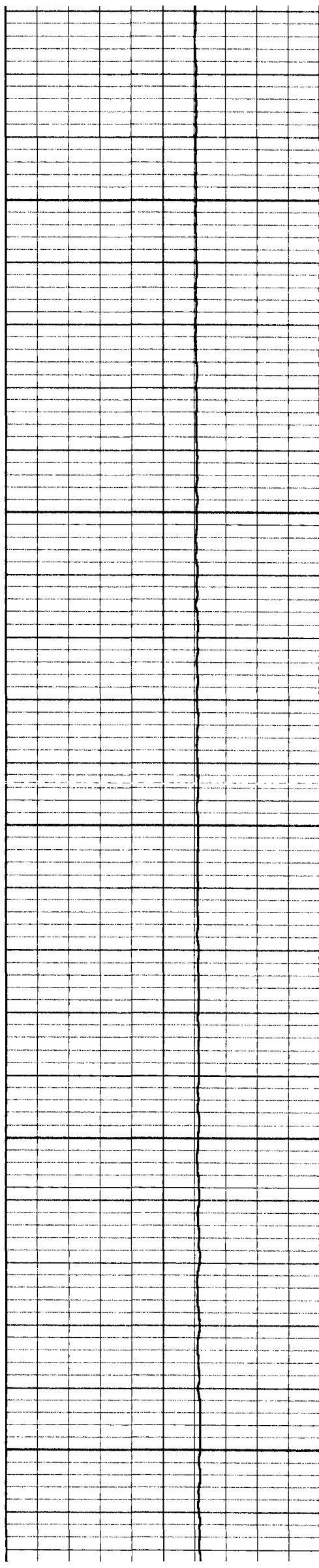
82.0

82.0

82.1

82.1

82.1



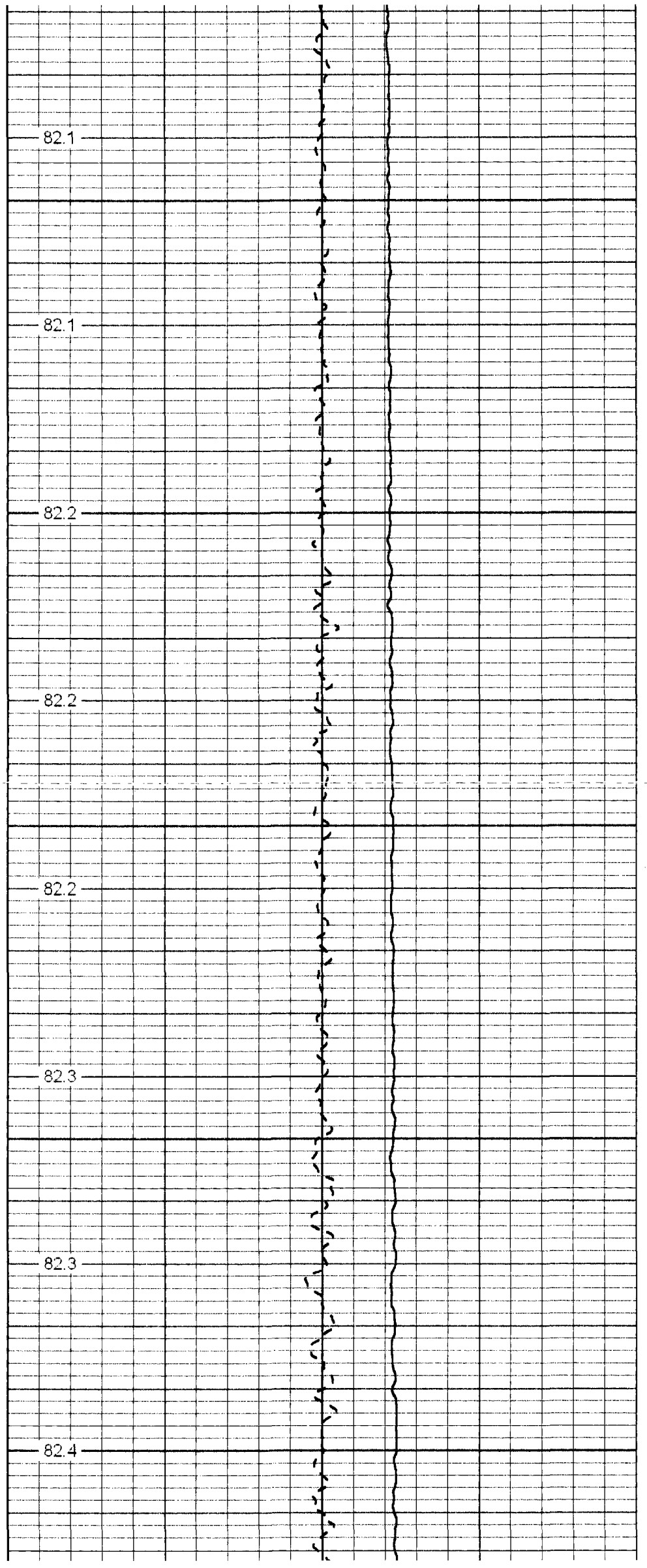
1000

1050

1100

1150

1200



82.1

82.1

82.2

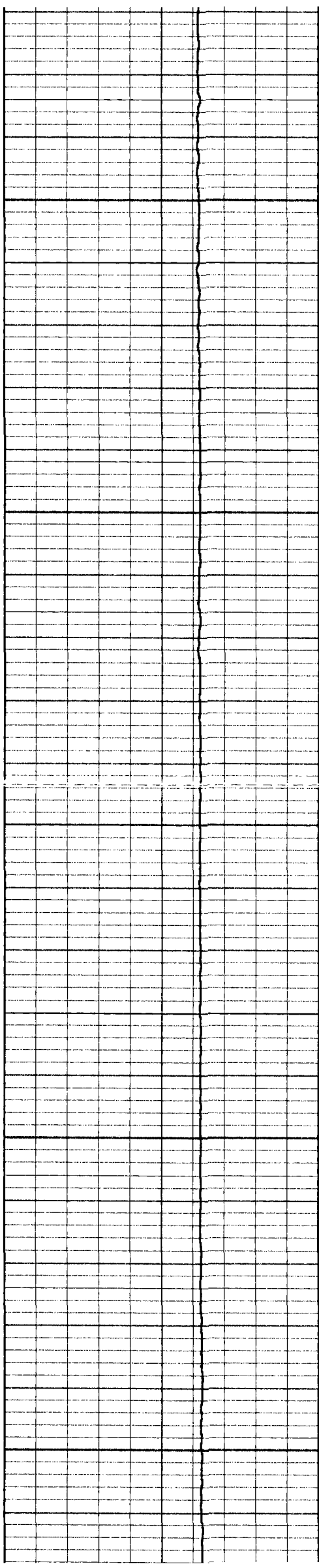
82.2

82.2

82.3

82.3

82.4



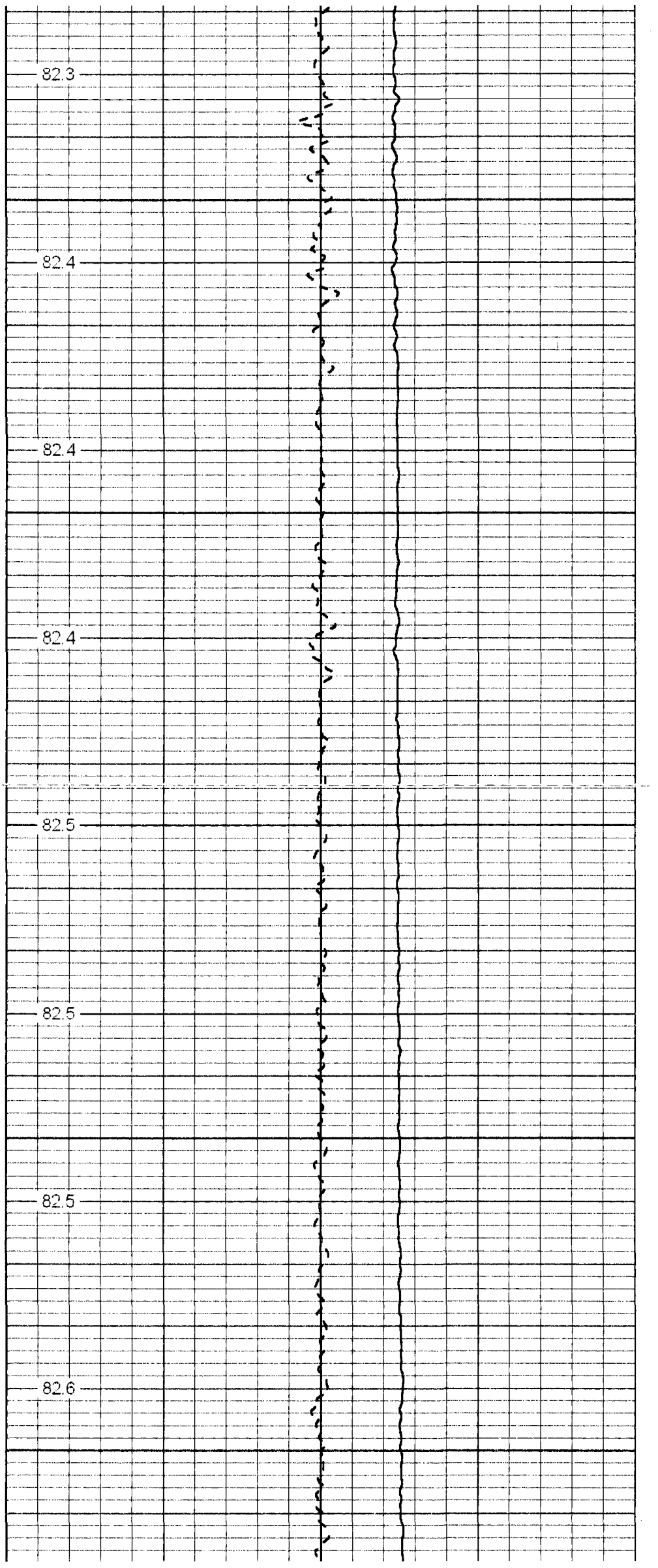
1250

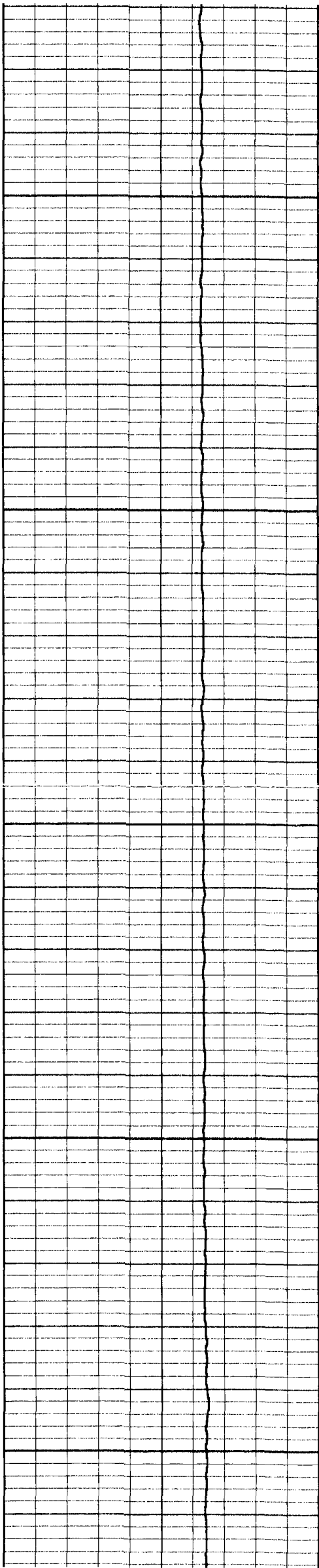
1300

1350

1400

1450





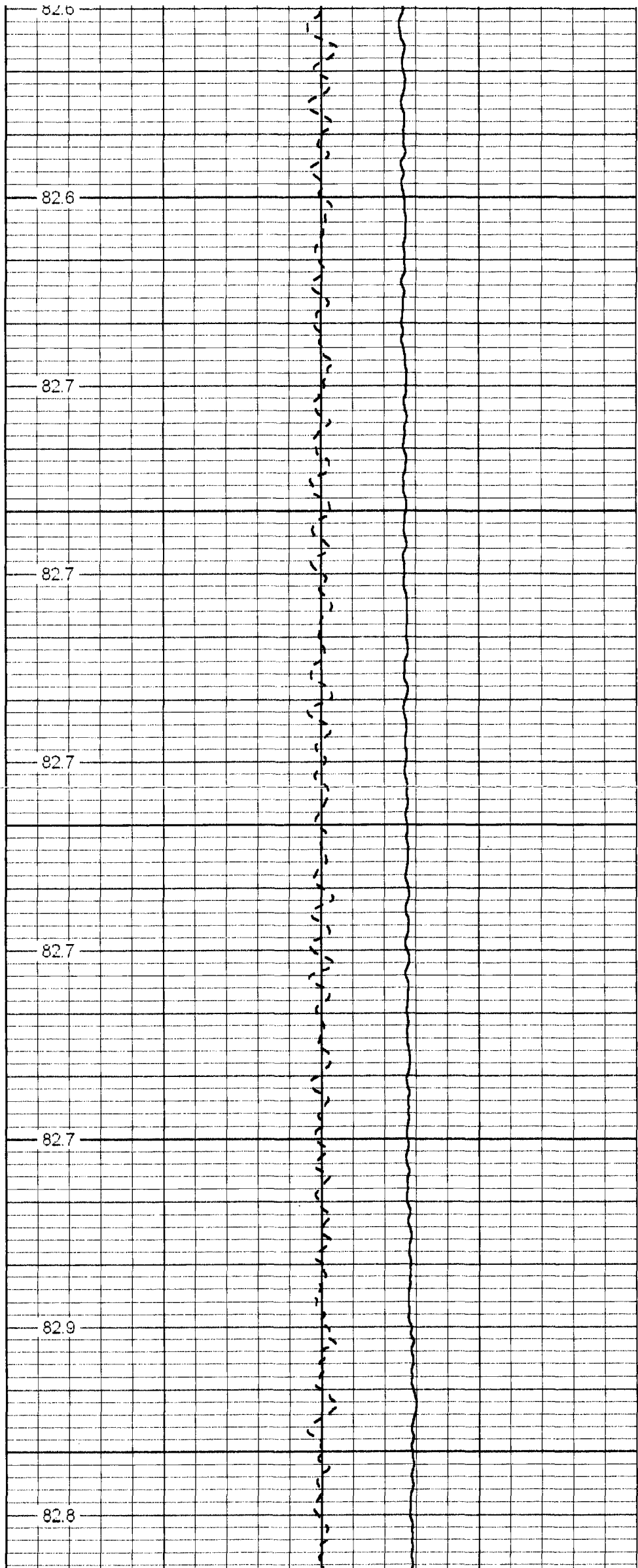
1500

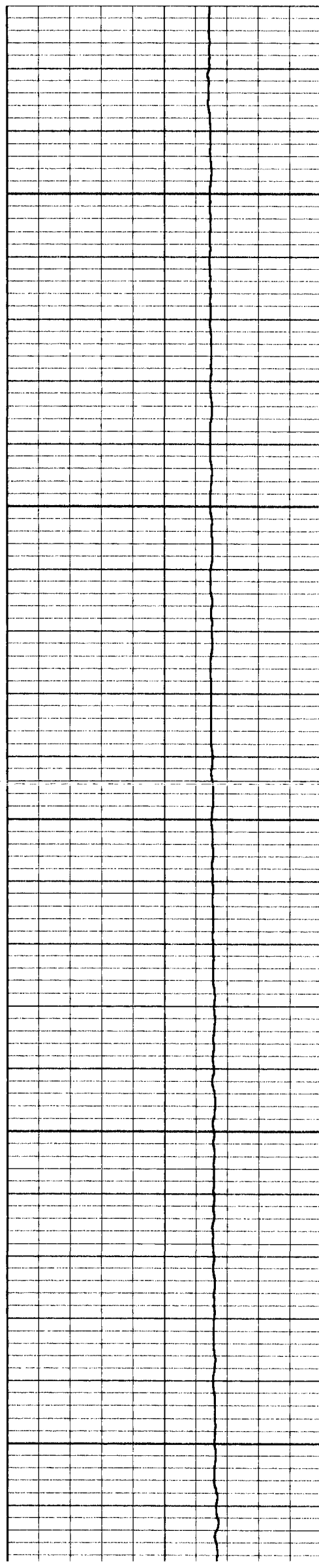
1550

1600

1650

1700





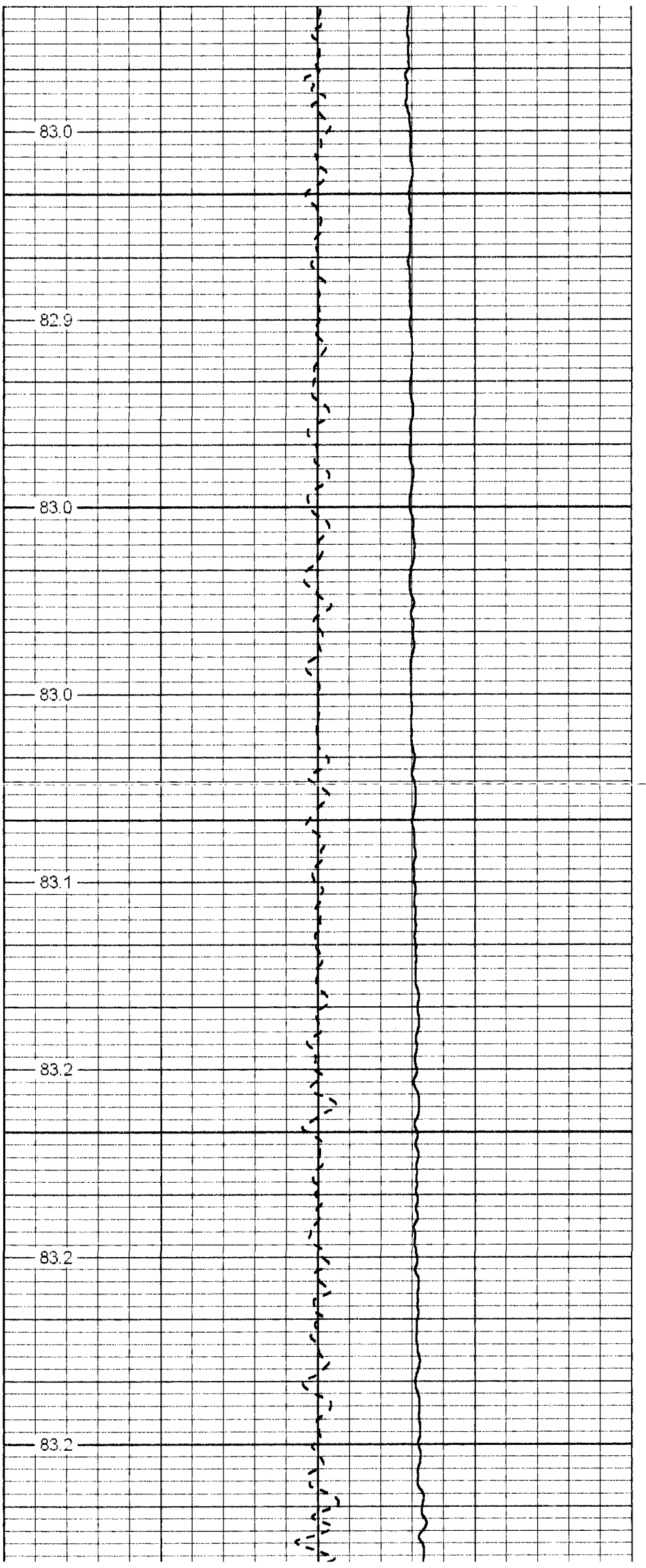
1750

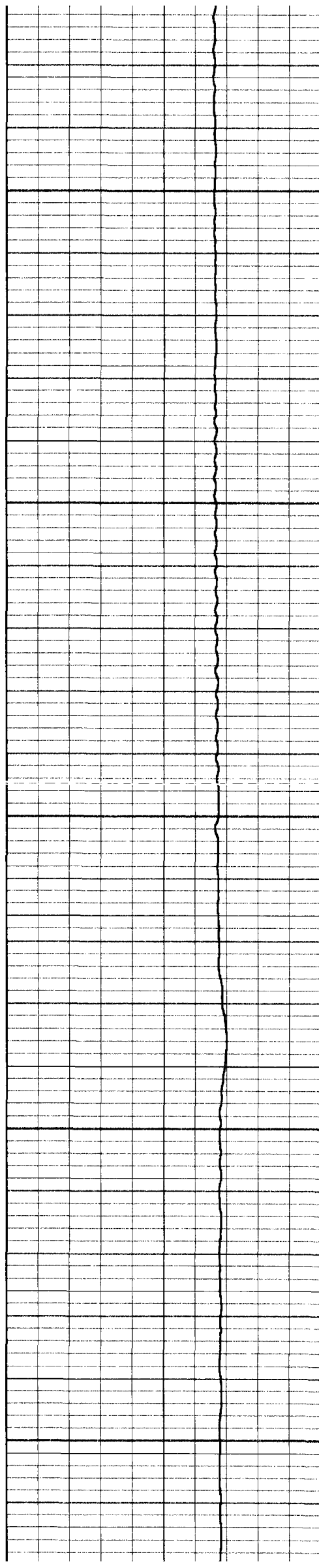
1800

1850

1900

1950





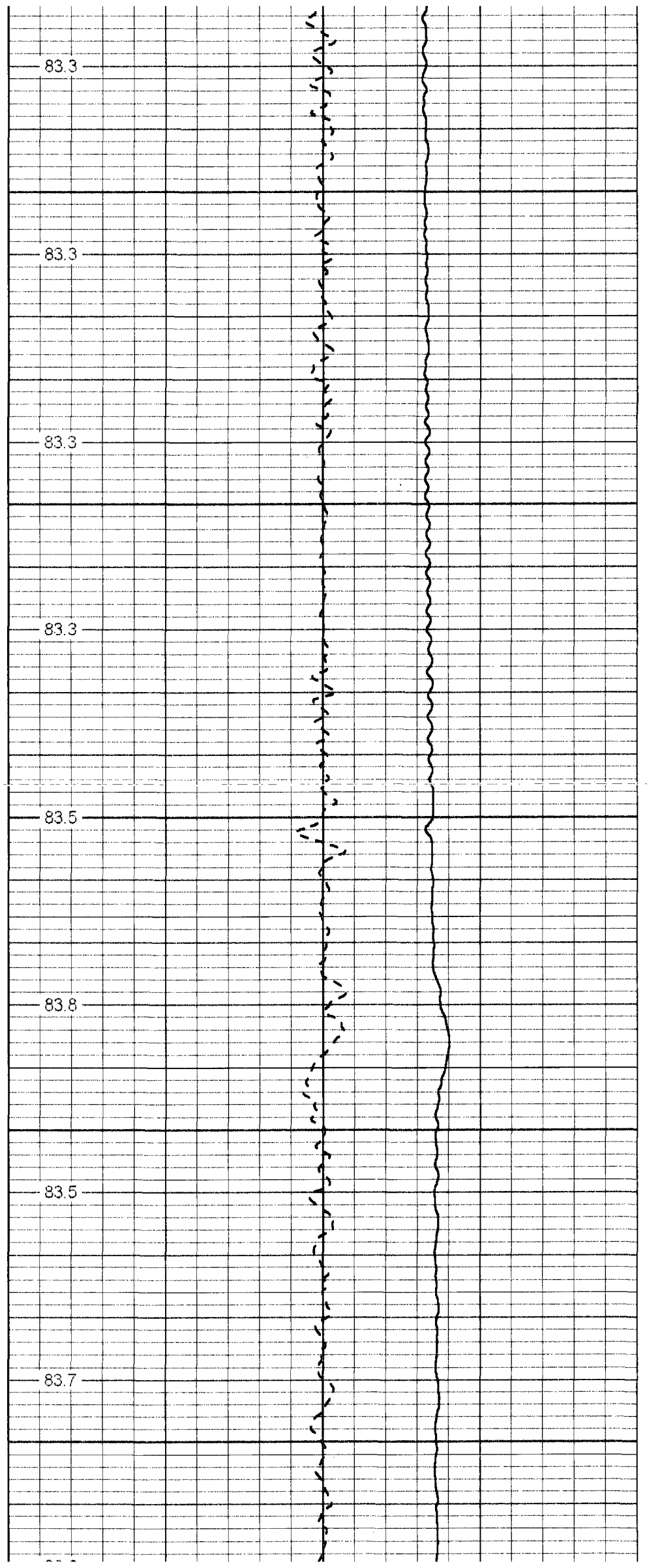
2000

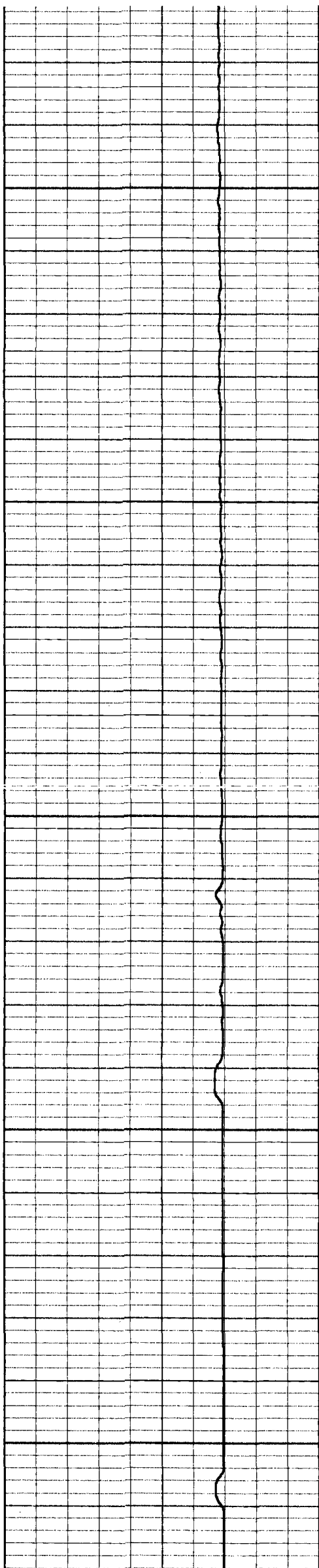
2050

2100

2150

2200





2250

83.7

2300

83.7

2350

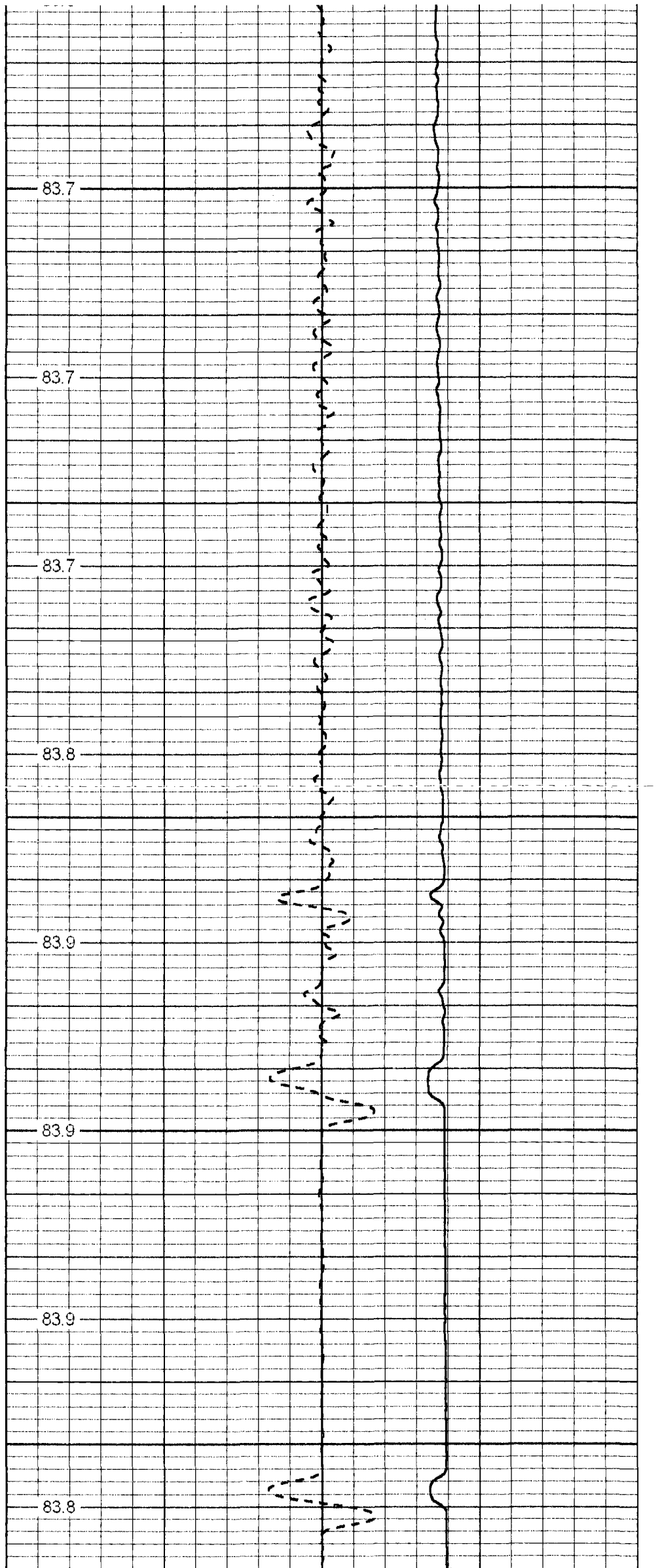
83.8

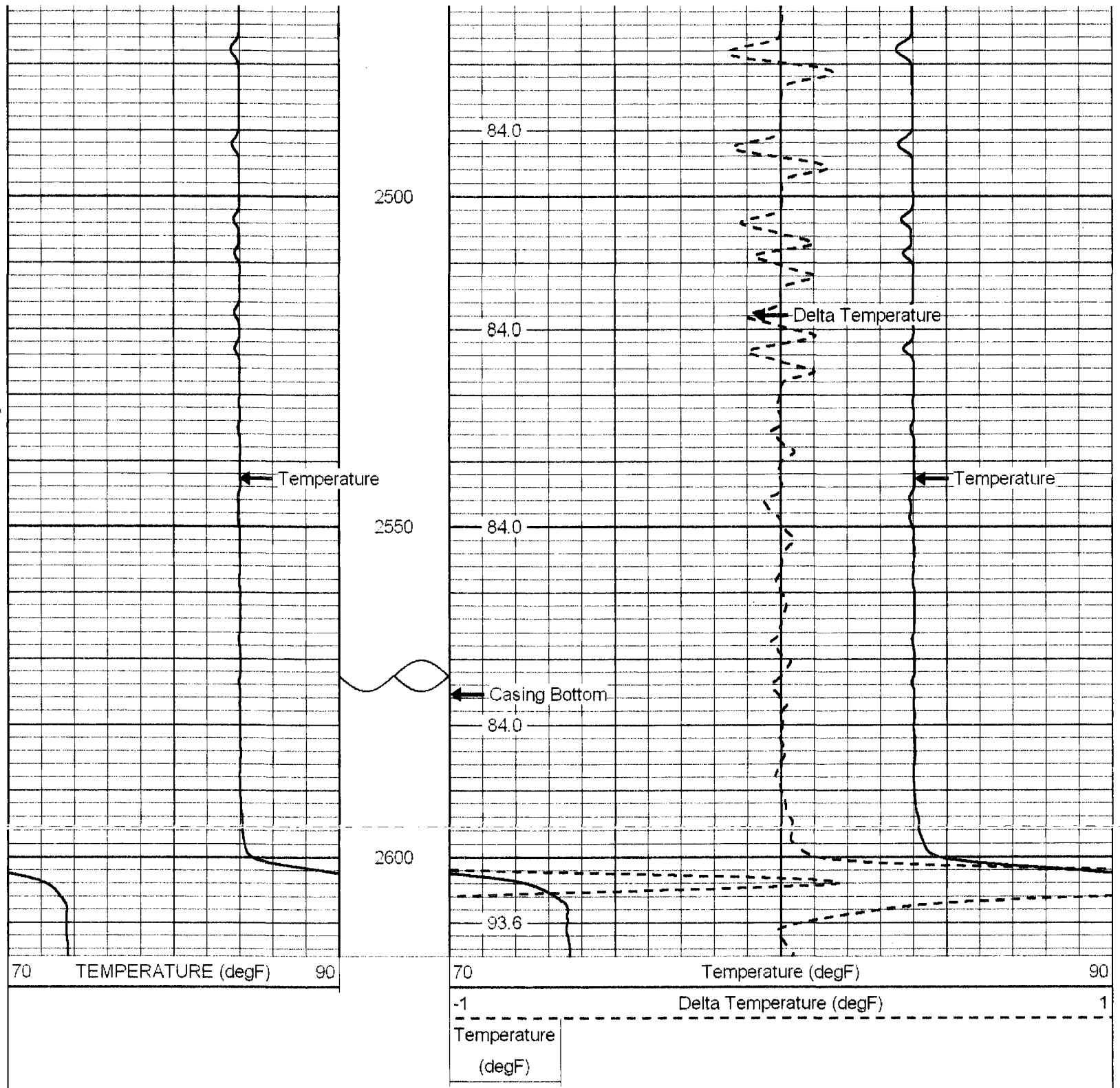
2400

83.9

2450

83.8





Calibration Report

Database File: ncolrts1.db
 Dataset Pathname: TEMP
 Dataset Creation: Mon Jul 14 10:11:48 2008 by Log 6.2_B4

Temperature Calibration Report

Serial Number: 952
 Tool Model: RTS
 Performed: Tue May 31 07:53:57 2005

| Point # | Reading | | Reference | |
|---------|---------|-----|-----------|------|
| 1 | 421 | cps | 42 | degF |
| 2 | 831.5 | cps | 83 | degF |
| 3 | 1472.5 | cps | 147 | degF |
| 4 | | cps | | degF |
| 5 | | cps | | degF |
| 6 | | cps | | degF |
| 7 | | cps | | degF |
| 8 | | cps | | degF |
| 9 | | cps | | degF |
| 10 | | cps | | degF |

| Sensor | Offset (ft) | Schematic | Description | Len (ft) | OD (in) | Wt (lb) |
|--------|-------------|-----------|----------------------------|----------|---------|---------|
| | | | CHD-None (1) Cable Head | 1.00 | 1.69 | 10.00 |
| | | | TEMP-RTS (952) | 25.50 | 1.69 | 70.00 |
| TEMP | 0.10 | | | | | |

Dataset: ncolrts1.db: field/well/run1/TEMP
 Total Length: 26.50 ft
 Total Weight: 80.00 lb