

Company **WATER RESOURCE SLTS.**
Well **IW #1**
Field **NCWRF**
County **COLLIER**
State **FL**

Company **WATER RESOURCE SOLUTIONS, INC.**
Well **IW #1**
Field **NCWRF**
County **COLLIER** State **FLORIDA**
Location **SE 1/4 S27 T48S R25E**
Other Services **RTS**
Permanent Datum **PAD** Elevation **15'**
Log Measured From **GROUND LEVEL**
Drilling Measured From **PAD** Elevation **K.B. N/A
D.F. 20.5'
G.L. 15'**

Date	29-AUG-2003
Run Number	RTS
Depth Driller	3250'
Depth Logger	3239'
Bottom Logged Interval	2820'
Top Log Interval	SURFACE
Open Hole Size	22"
Type Fluid	WATER
Density / Viscosity	N/A
Max. Recorded Temp.	96 DEGF
Estimated Cement Top	N/A
Time Well Ready	ON ARRIVAL
Time Logger on Bottom	0000
Equipment Number	102
Location	FT MYERS
Recorded By	LEE
Witnessed By	N KUGLIER

Borehole Record		Tubing Record					
Run Number	Bit	From	To	Size	Weight	From	To
ONE	59.5"	SURFACE	415'				
TWO	12.25"	CASING	1450'				
THREE	42.5"	CASING	1300'				

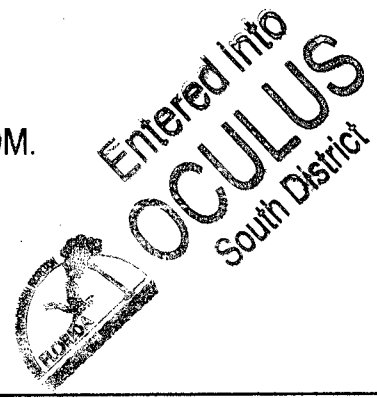
Casing Record		Tubing Record	
String	Size	Wd/Ft	Bottom
Surface String	60"	375 W.T	8'
Prod. String	48"	375 W.T	410'
Production String	34"	375 W.T	1300'
Liner	24"	500 W.T	2575'

<<< Fold Here >>>

All interpretations are opinions based on inferences from electrical or other measurements and we cannot and do not guarantee the accuracy or correctness of any interpretation, and we shall not, except in the case of gross or willful negligence on our part, be liable or responsible for any loss, costs, damages, or expenses incurred or sustained by anyone resulting from any interpretation made by any of our officers, agents or employees. These interpretations are also subject to our general terms and conditions set out in our current Price Schedule.

Comments

EJECTOR 13.5' FROM TOOL BOTTOM.



TEMPERATURE

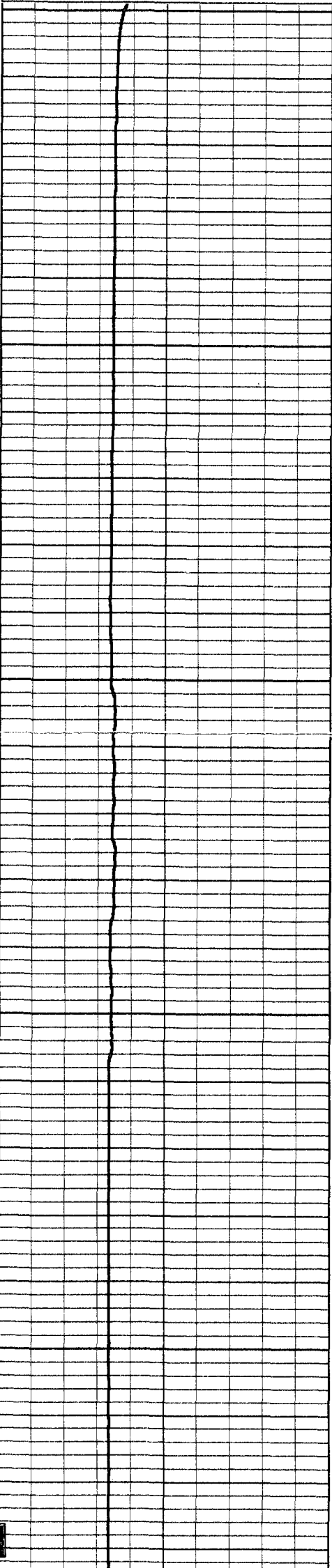
Charted by:

Depth in Feet scaled 1:240

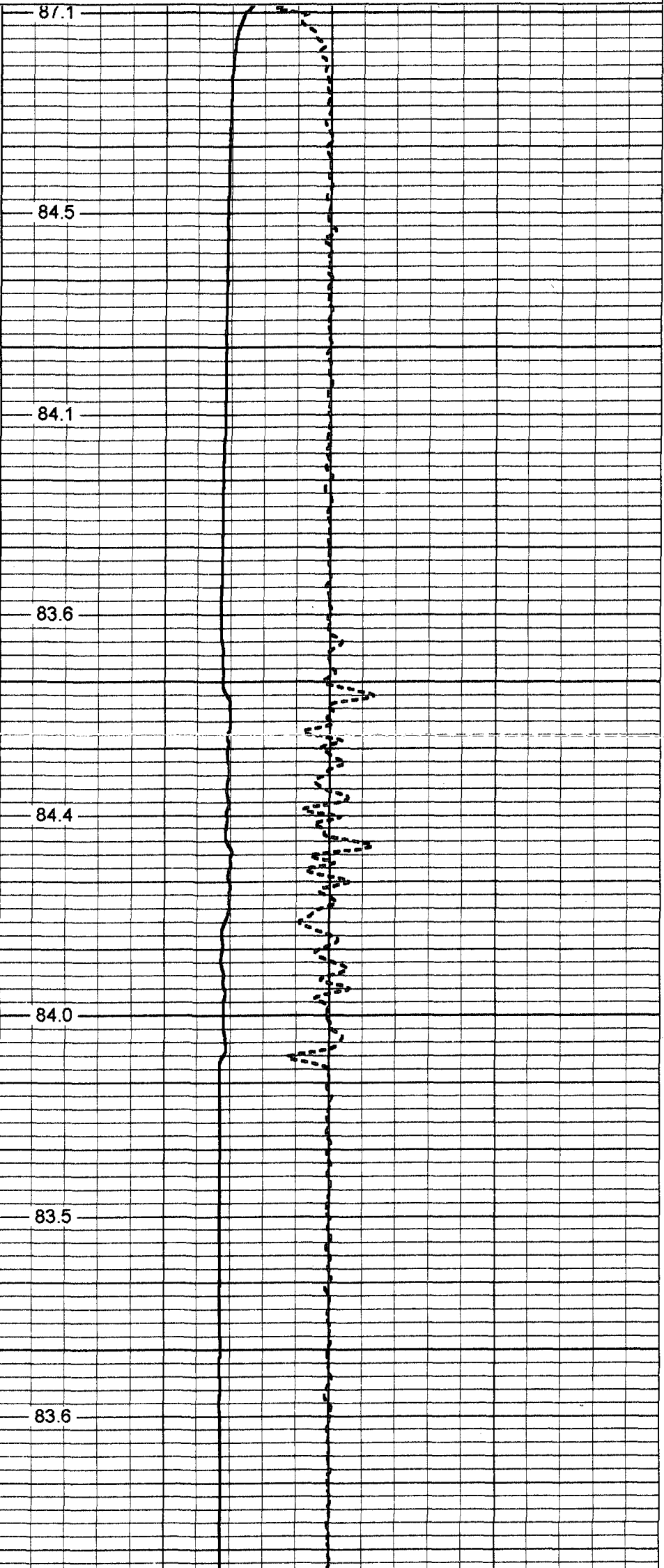
50 TEMPERATURE (degF) 150

50 TEMPERATURE (degF) 150

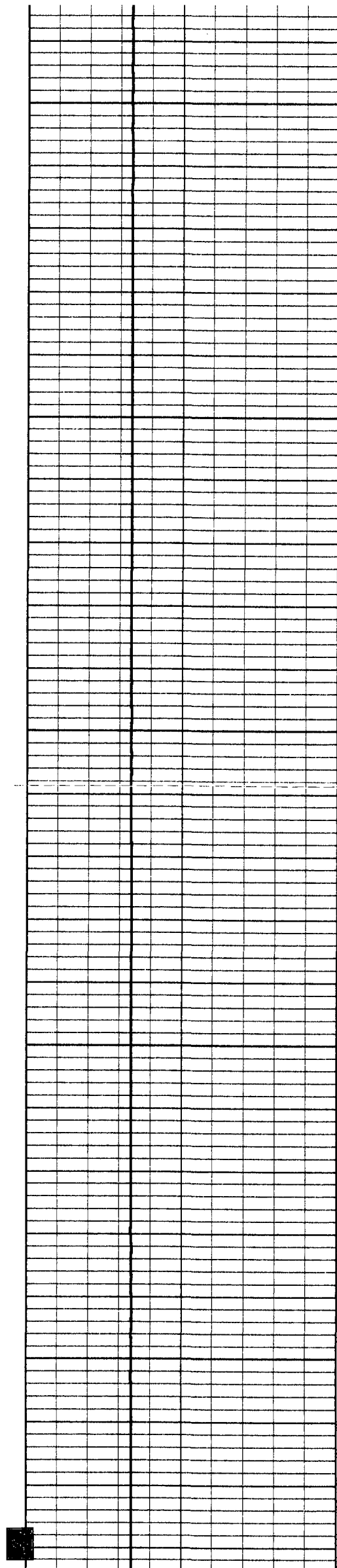
-5 DELTA TEMPERATURE (degF) 5



0
50
100
150
200



87.1
84.5
84.1
83.6
84.4
84.0
83.5
83.6



250

300

350

400

450

83.6

83.6

83.7

83.7

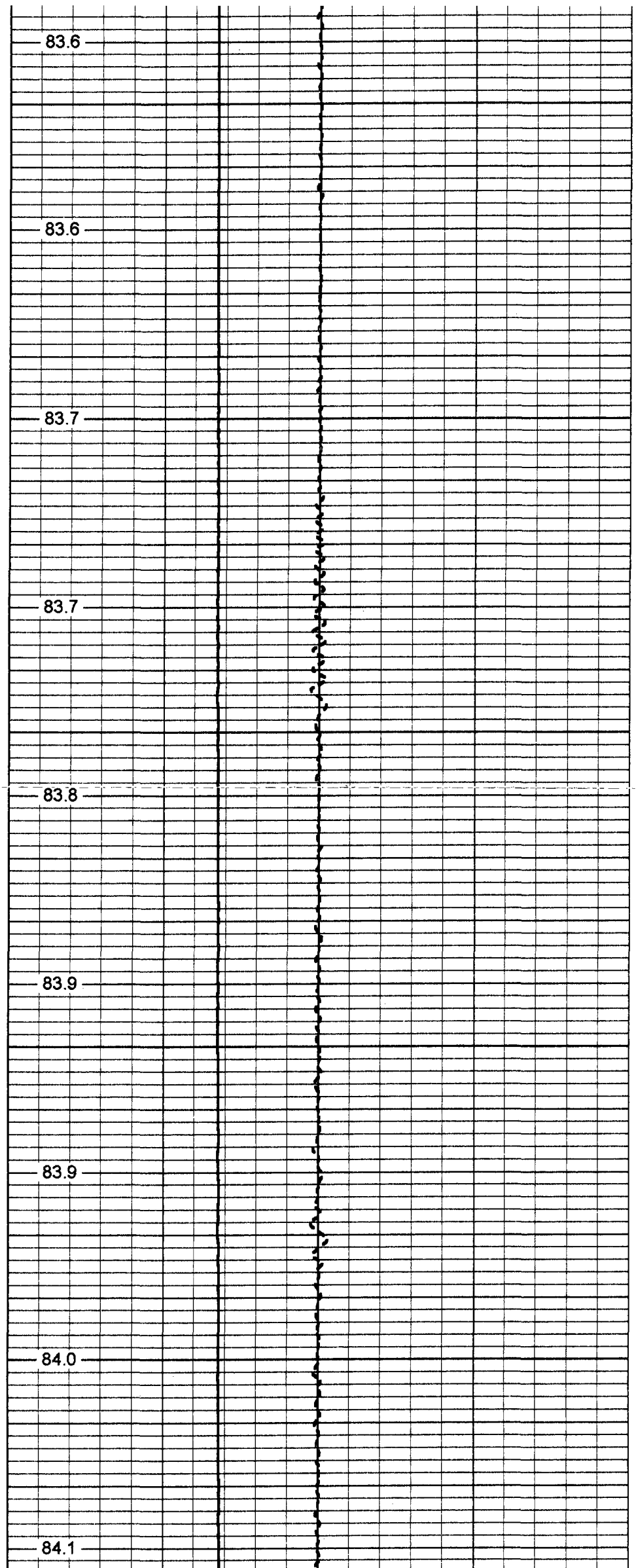
83.8

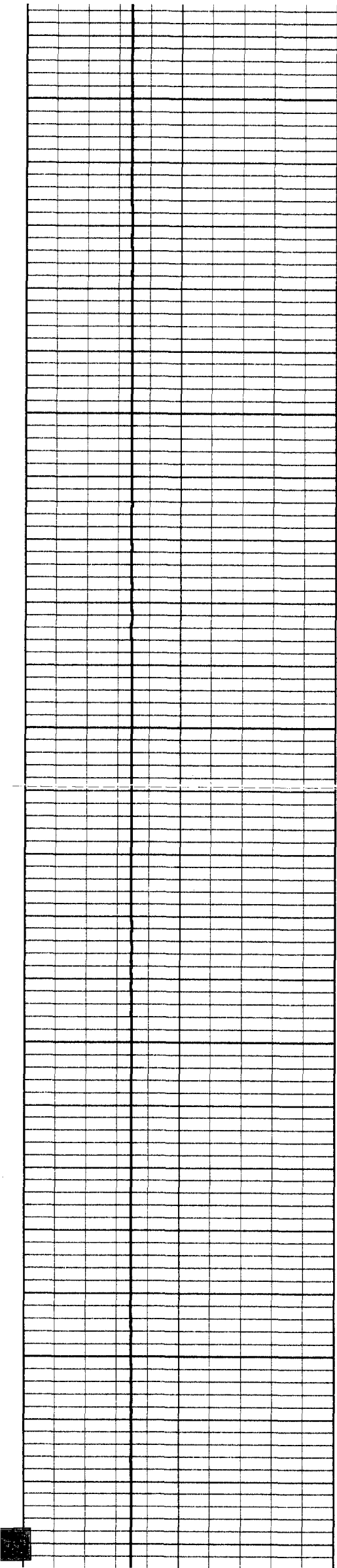
83.9

83.9

84.0

84.1





500

84.2

84.3

550

84.3

600

84.5

84.5

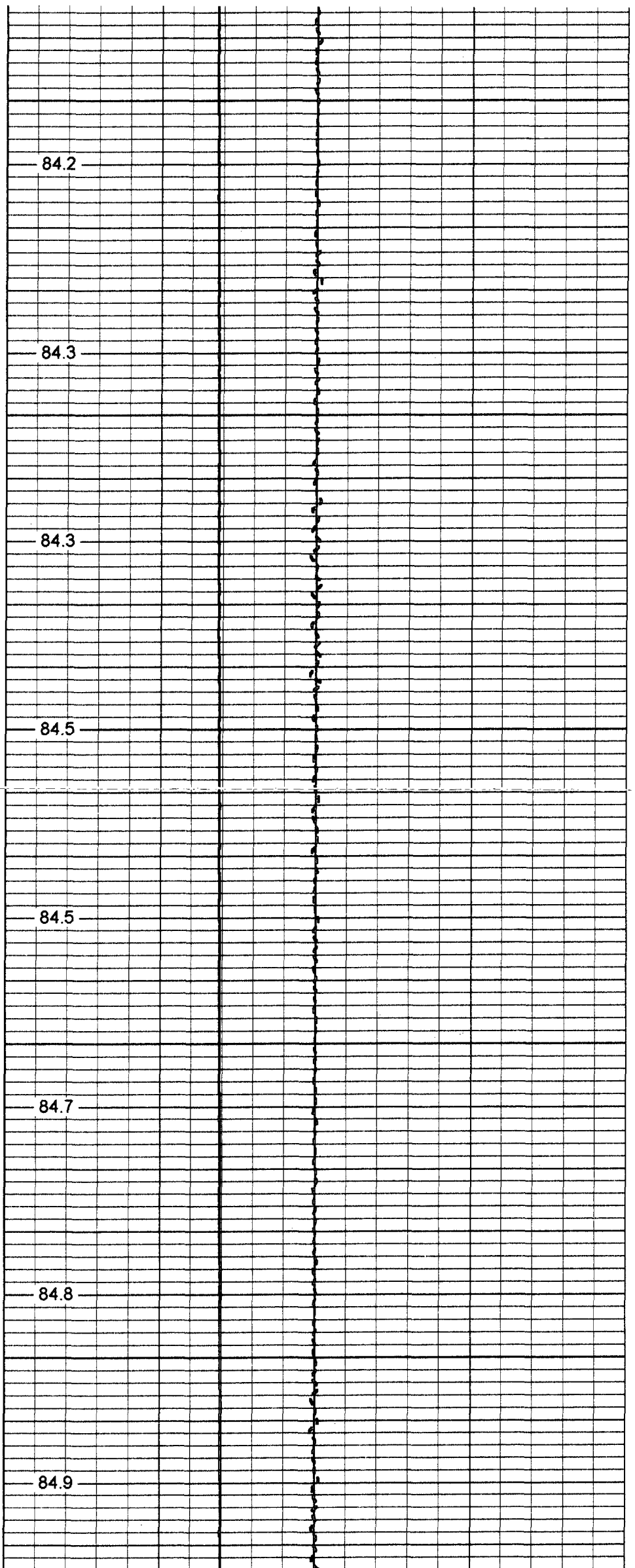
650

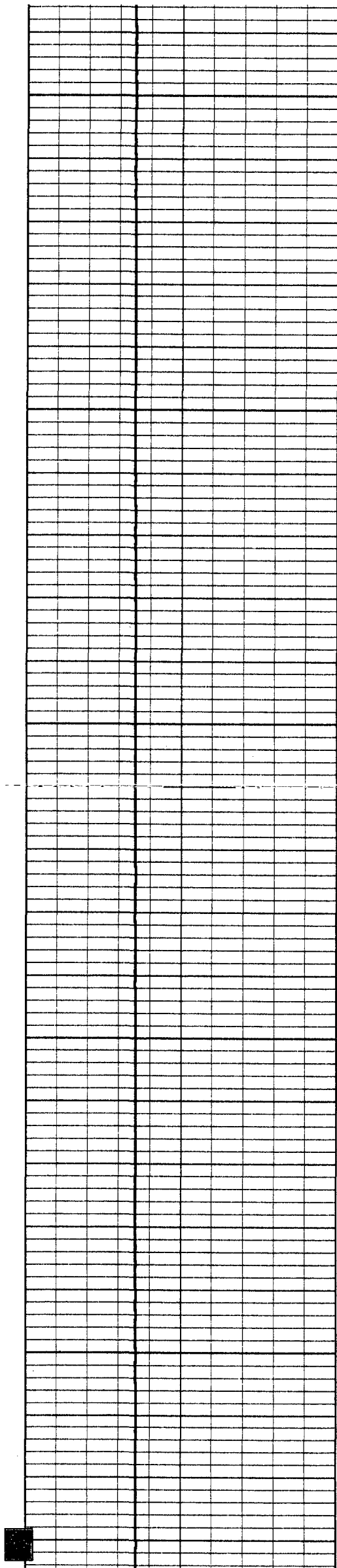
84.7

84.8

700

84.9





750

85.1

800

85.1

85.2

850

85.3

85.3

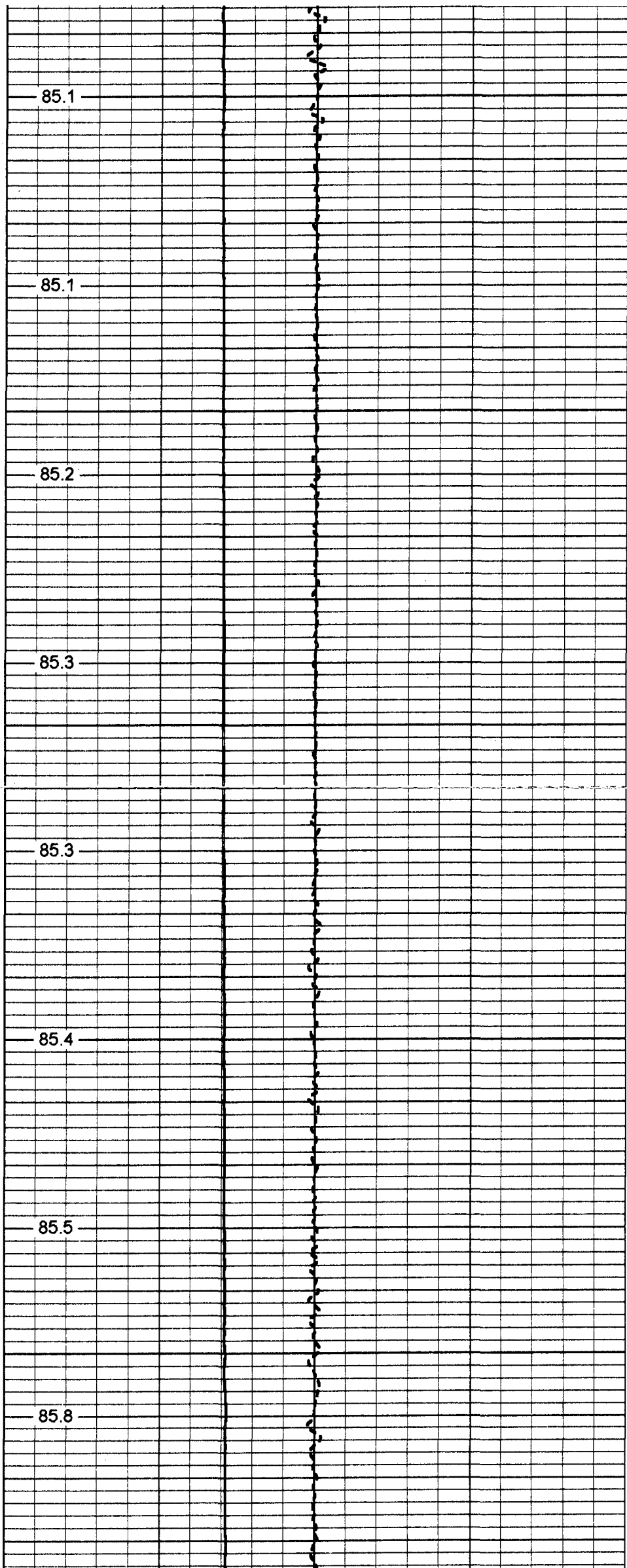
900

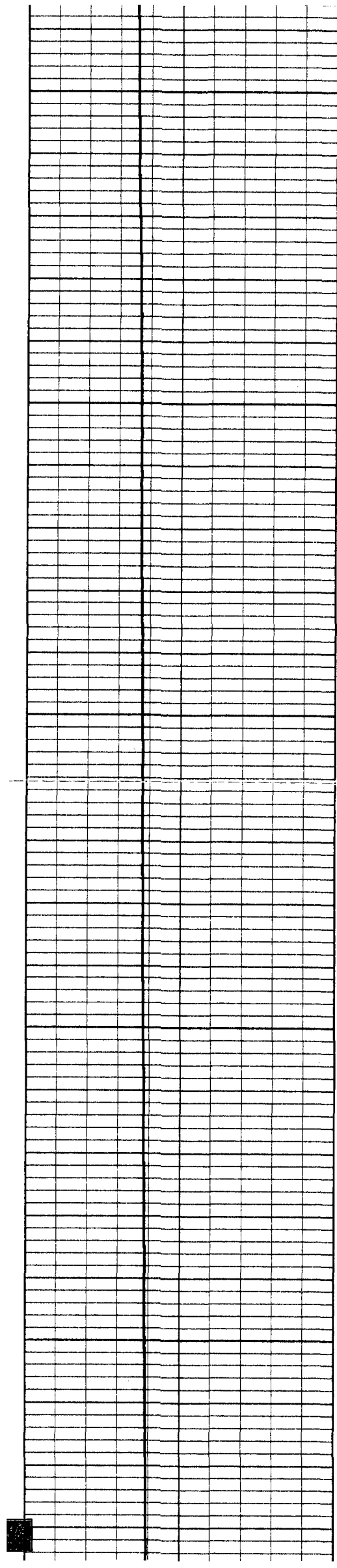
85.4

85.5

950

85.8





1000

1050

1100

1150

1200

85.8

86.4

87.0

87.4

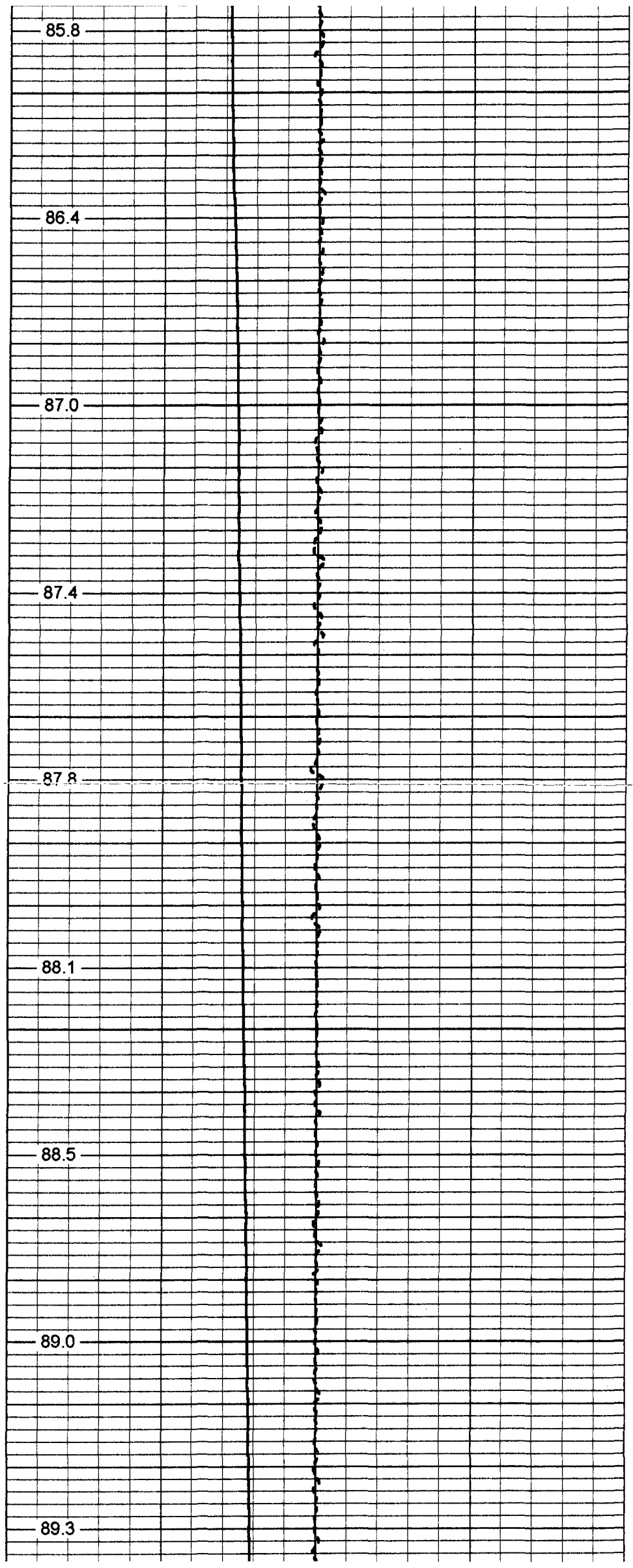
87.8

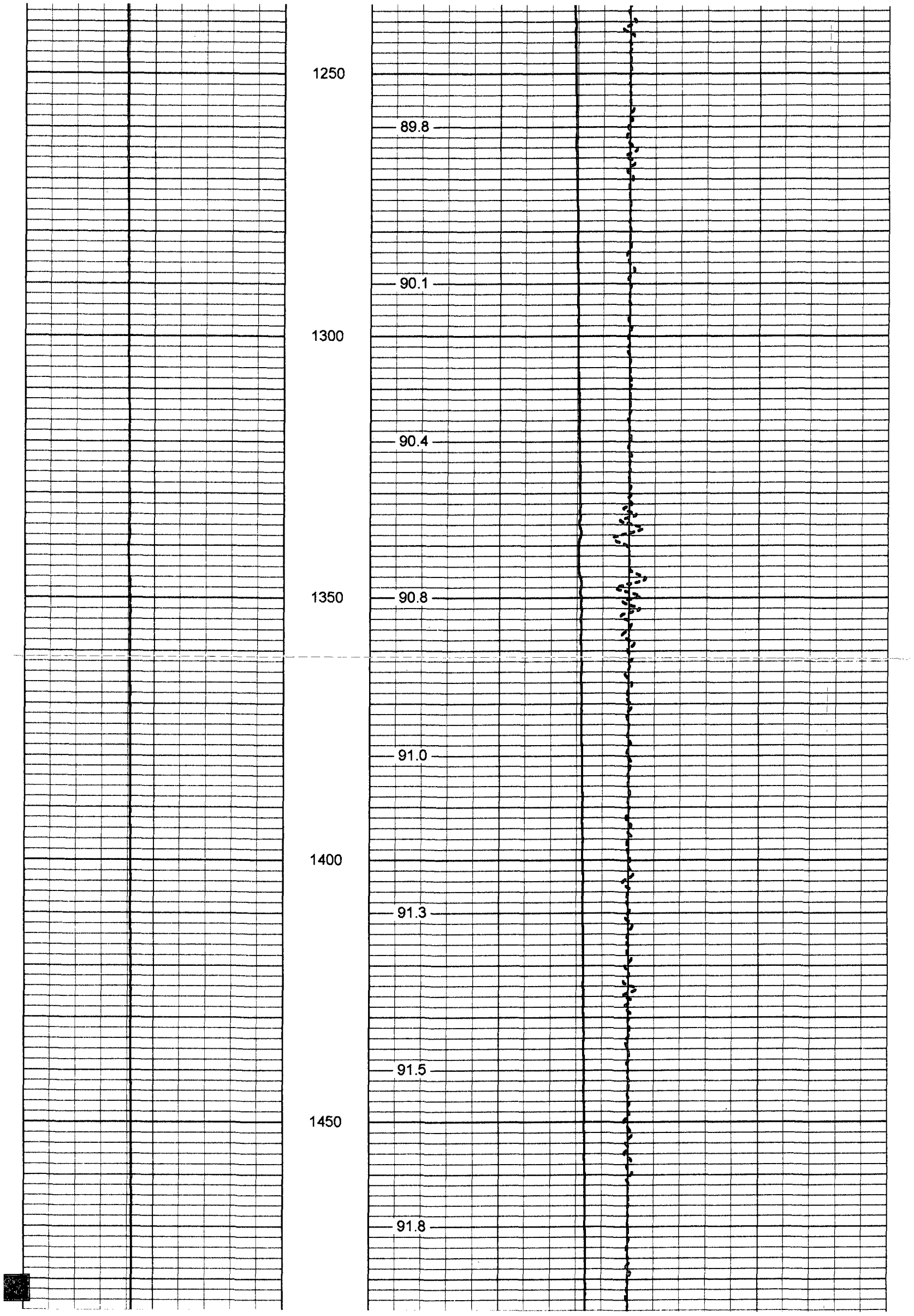
88.1

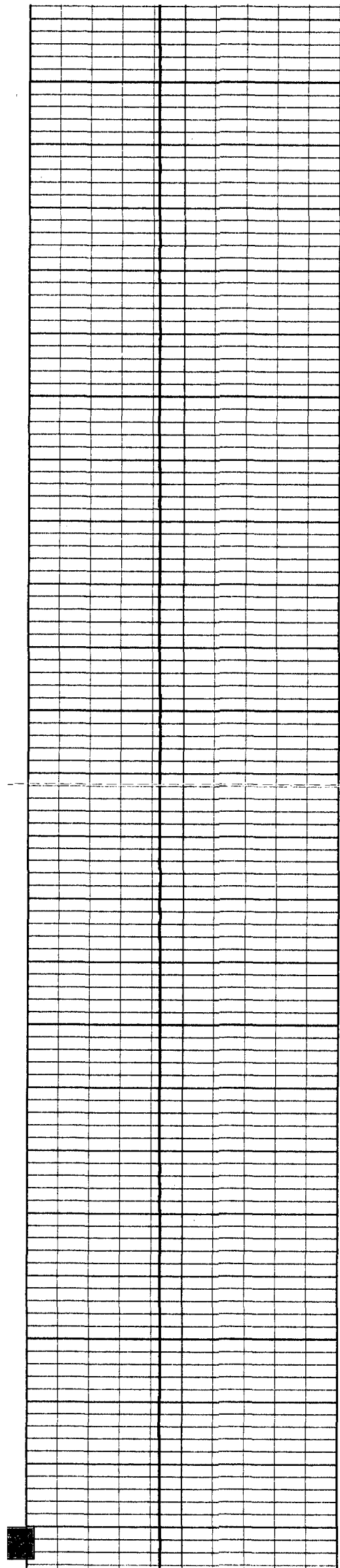
88.5

89.0

89.3







1500

92.0

92.2

1550

92.3

92.5

1600

92.7

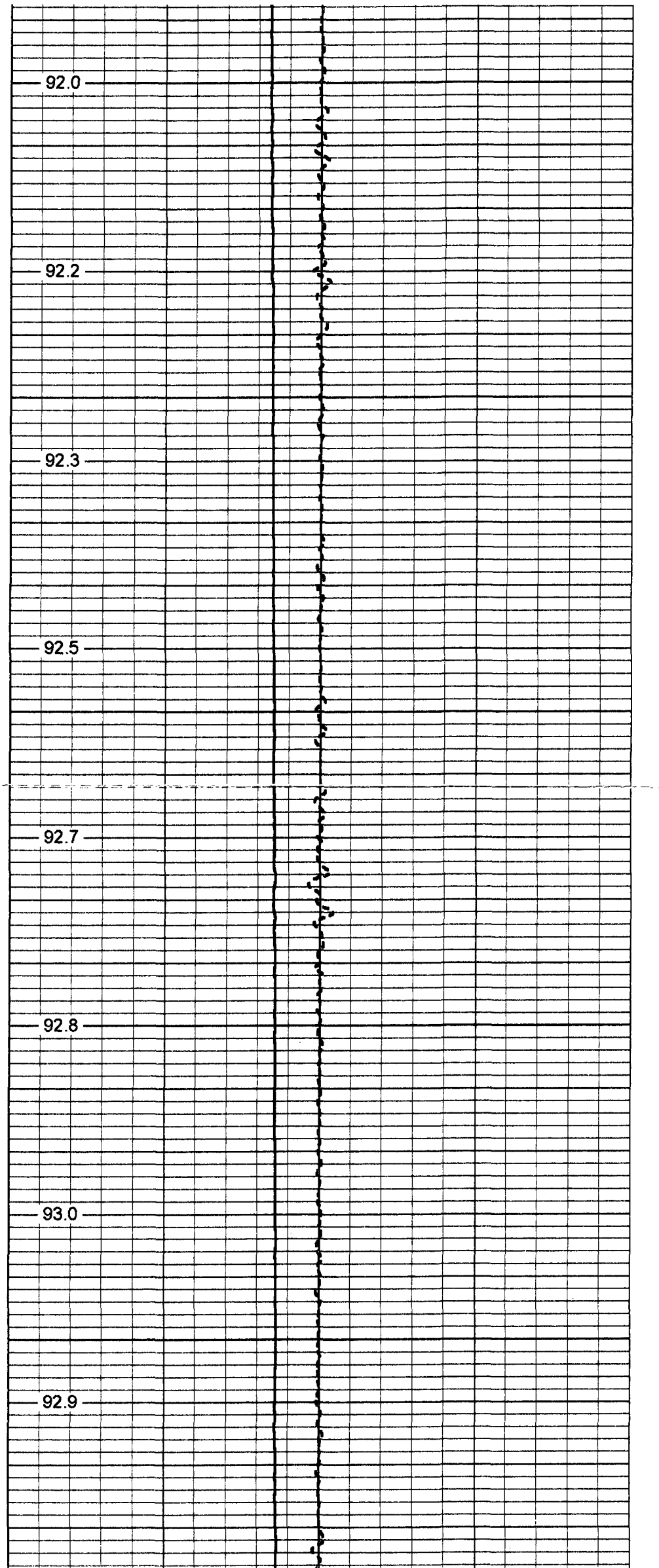
1650

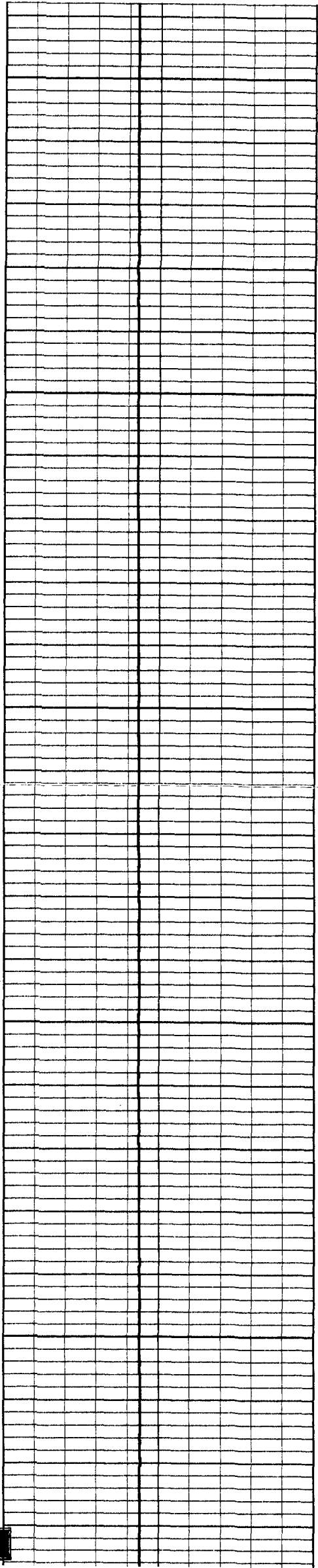
92.8

93.0

1700

92.9





1750

1800

1850

1900

1950

93.0

93.1

93.2

93.5

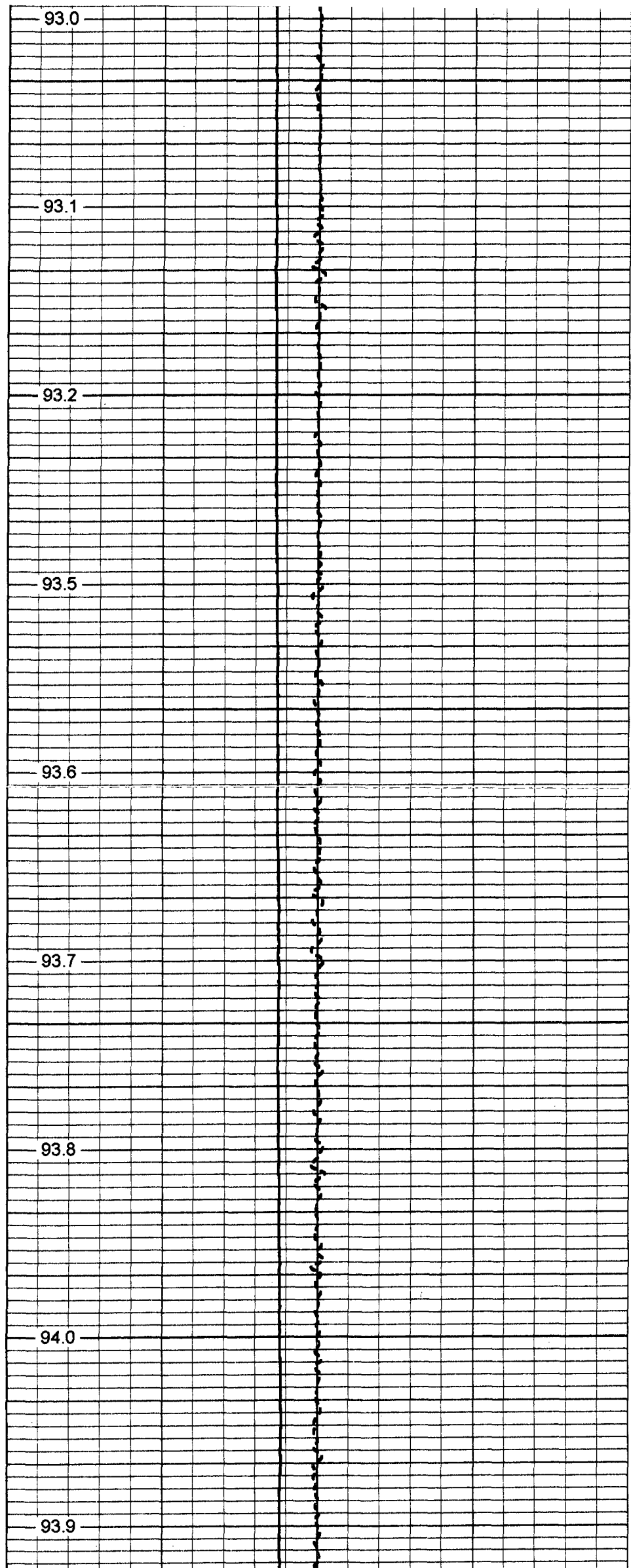
93.6

93.7

93.8

94.0

93.9



2000

94.1

2050

94.1

94.4

2100

94.7

94.8

2150

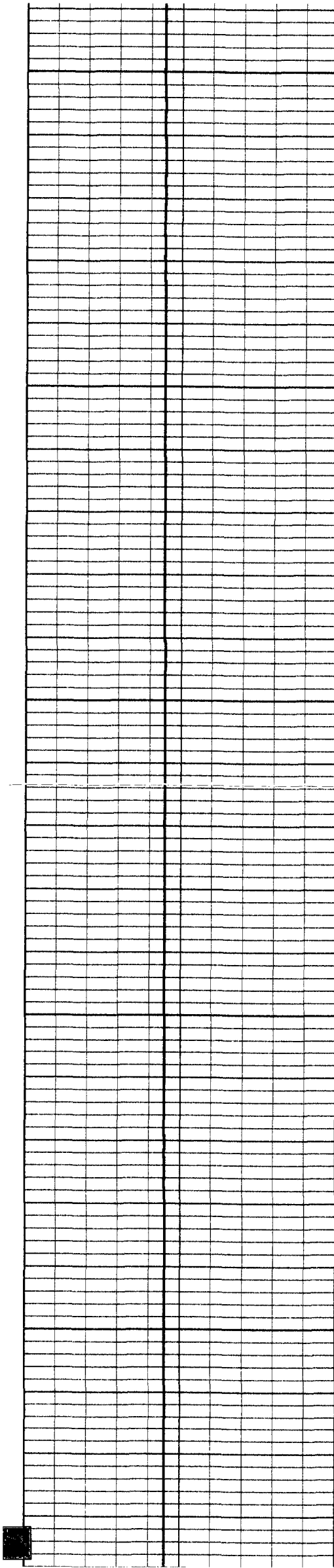
94.7

94.5

2200

94.9





2250

94.5

94.7

2300

94.9

94.9

2350

95.0

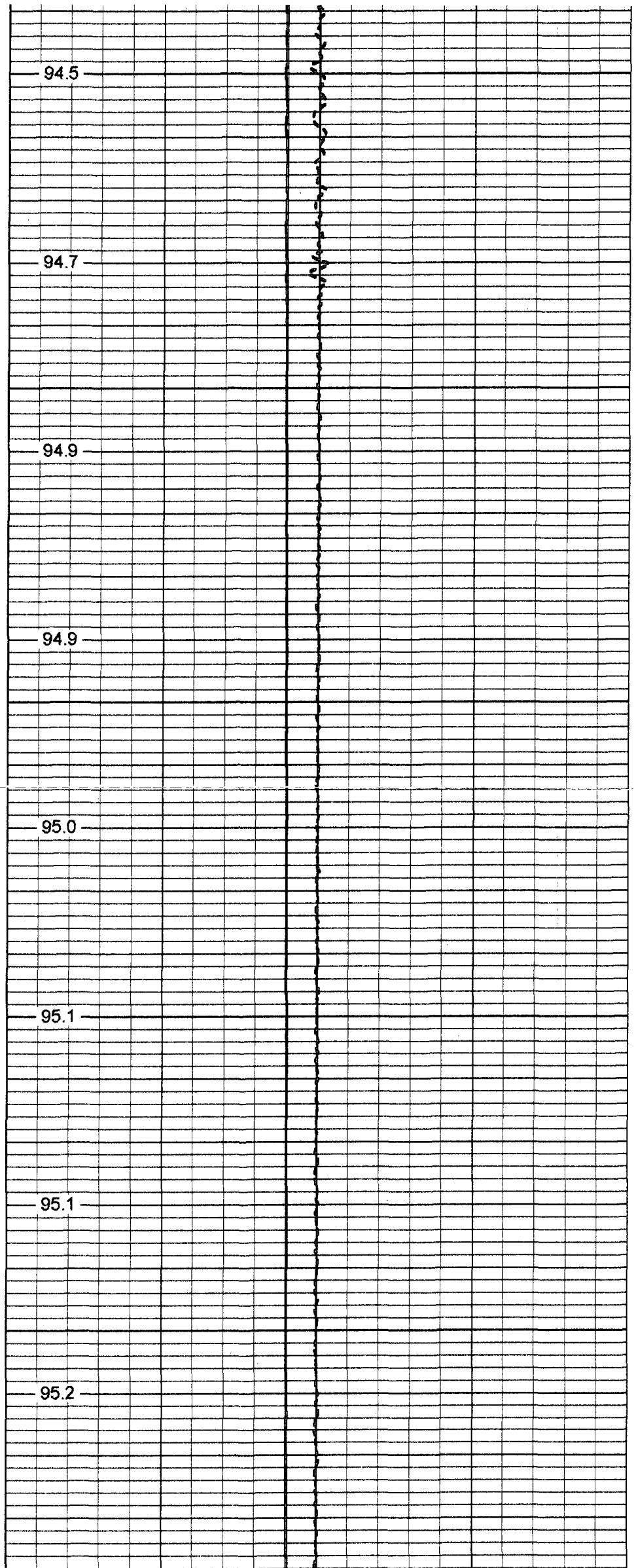
2400

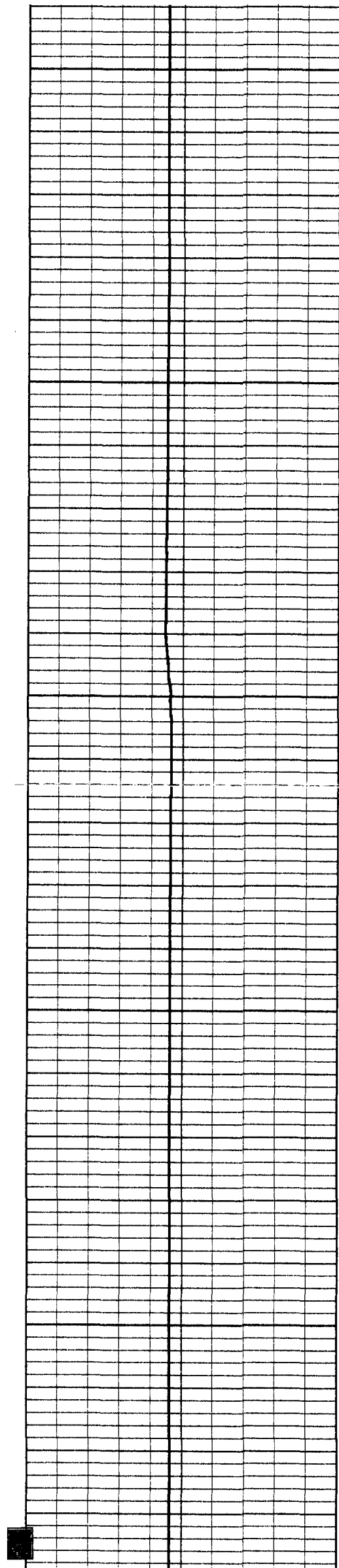
95.1

95.1

2450

95.2





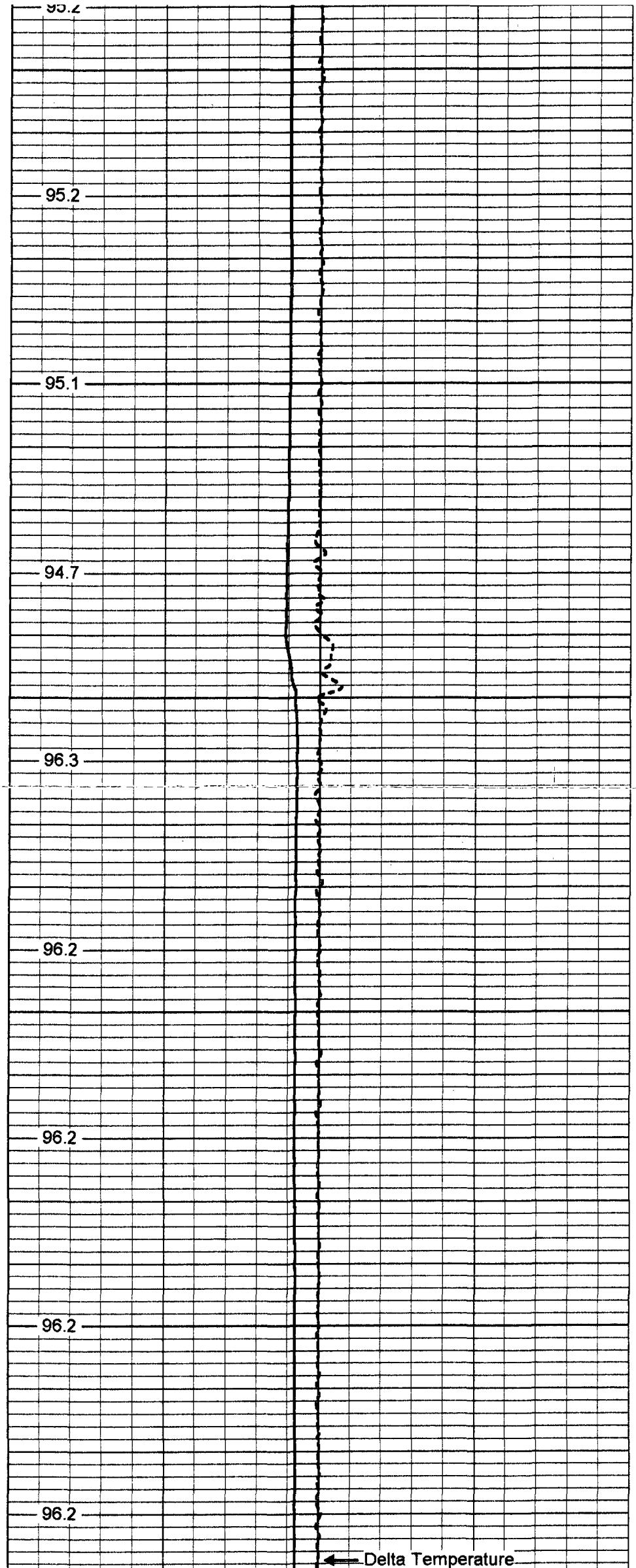
2500

2550

2600

2650

2700



95.2

95.1

94.7

96.3

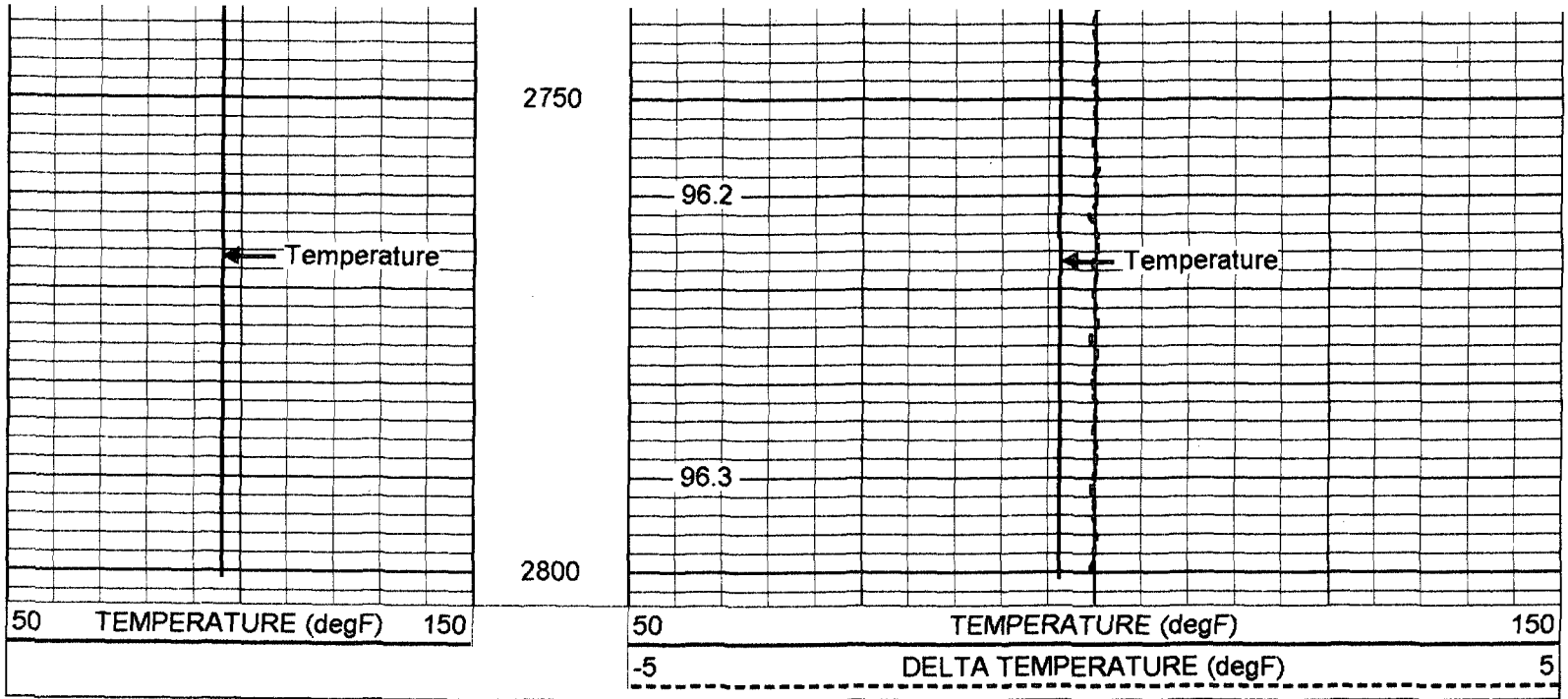
96.2

96.2

96.2

96.2

← Delta Temperature



Temperature Calibration Report

Serial Number: 954
 Tool Model: RTS
 Performed: Wed Aug 06 17:17:01 2003

Point #	Reading		Reference	
1	338.011	cps	34	degF
2	789.31	cps	78	degF
3	1553.28	cps	152	degF

TEMP 0.10 ft

Dataset: run1/TEMP
Total Length: 25.50 ft
Total Weight: 70.00 lb
O.D.: 1.69 in