



YOUNGQUIST BROTHERS, Inc
GEOPHYSICAL LOGGING DIVISION

FLUID CONDUCTIVITY TEMPERATURE LOG

Company CH2M HILL
Well RO DEEP IW #1
Field BONITA SPRINGS W.T.P
County LEE
State FLORIDA

Company CH2M HILL
Well RO DEEP IW #1
Field BONITA SPRINGS W.T.P.
County LEE
State FLORIDA

Permanent Datum
Log Measured From
Drilling Measured From

2004 0 0 2004

Other Services
SEE COMMENTS

Elevation
K.B.
D.F.
G.L.

Date	2-JAN-2003
Run Number	FIVE
Depth Driller	3205'
Depth Logger	3206'
Bottom Logged Interval	3206'
Top Log Interval	CASING
Open Hole Size	12.25"
Type Fluid	WATER
Density / Viscosity	N/A
Max. Recorded Temp.	107 DEGF
Estimated Cement Top	N/A
Time Well Ready	ON ARRIVAL
Time Logger on Bottom	1000
Equipment Number	101
Location	FT MYERS
Recorded By	DENISON/BARRETT
Witnessed By	D. JABLONSKI

Borehole Record		Tubing Record					
Run Number	Bit	From	To	Size	Weight	From	To
ONE	12.25"	CASING	500'				
TWO	48.5"	CASING	455'				
THREE	36.5"	CASING	1600'				
FOUR	12.25"	CASING	3205'				

Casing Record		Tubing Record	
Surface String	Size	Wgt/Ft	Bottom
50"		375 W.T.	49'
38"		375 W.T.	450'
30"		375 W.T.	1600'

<<< Fold Here >>>

All interpretations are opinions based on inferences from electrical or other measurements and we cannot and do not guarantee the accuracy or correctness of any interpretation, and we shall not, except in the case of gross or willful negligence on our part, be liable or responsible for any loss, costs, damages, or expenses incurred or sustained by anyone resulting from any interpretation made by any of our officers, agents or employees. These interpretations are also subject to our general terms and conditions set out in our current Price Schedule.

Comments

DYNAMIC FLOWRATE = 1100 GPM

OTHER SERVICES:
DIL/LL3/SP
XYC/GR
FLOWMETER
SONIC
VIDEO

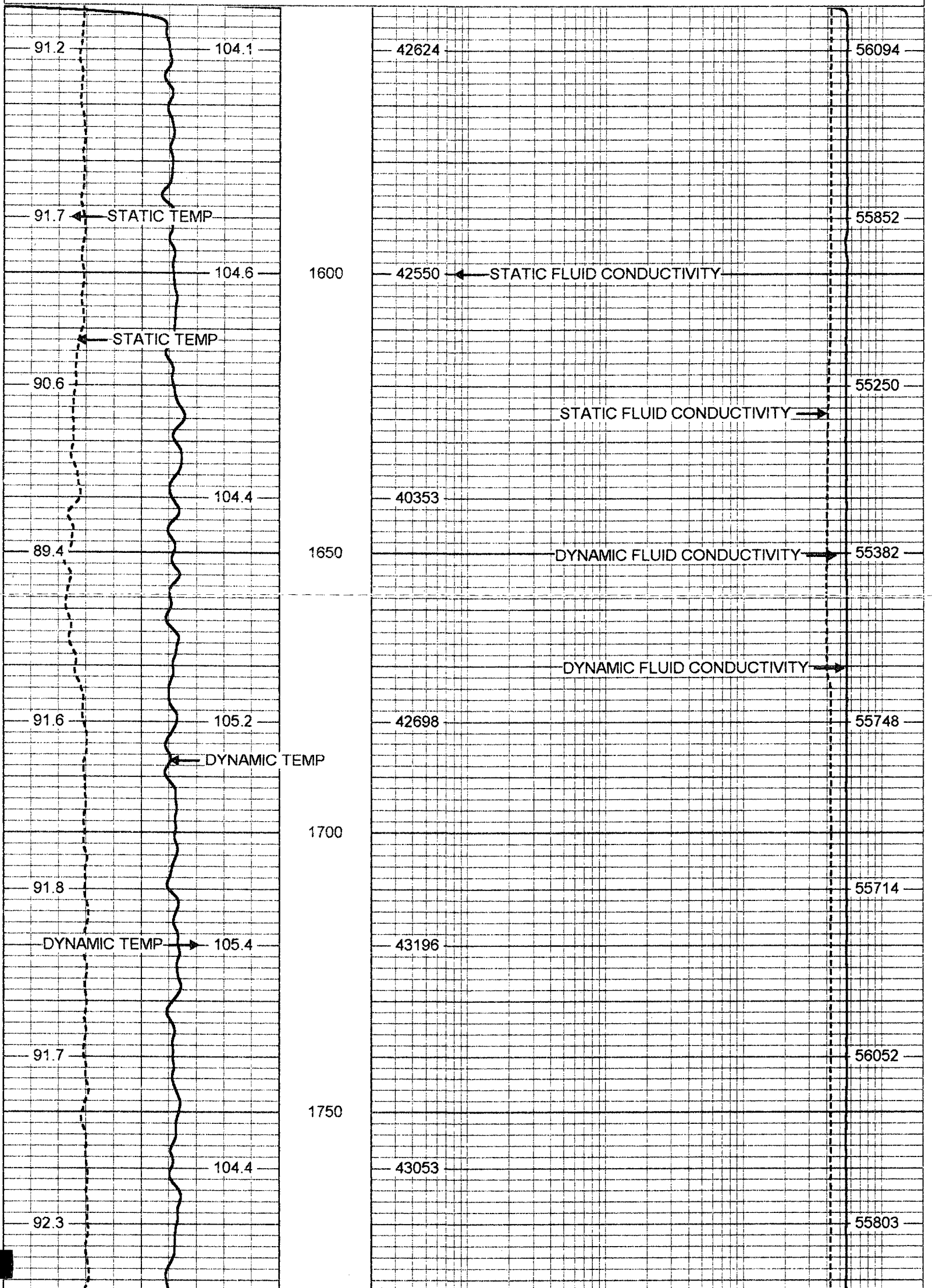


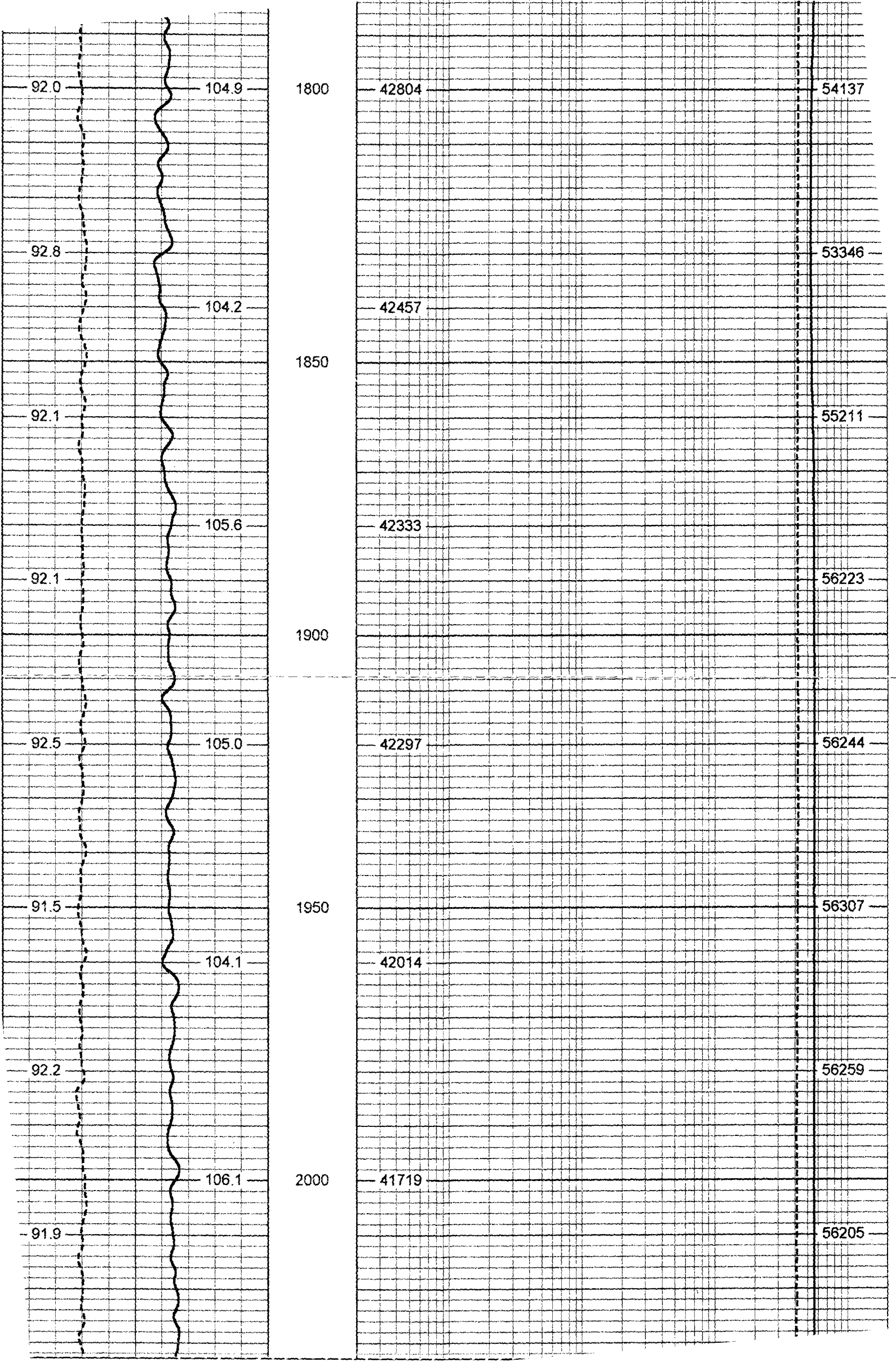
MERGED FCT/TEMP

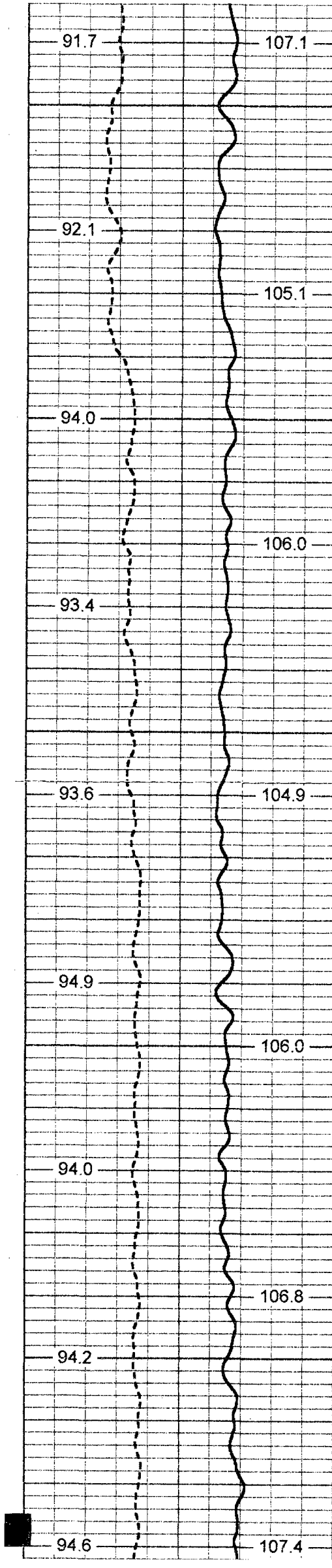
Database File: bsroi1.db
Dataset Pathname: run5/pass16
Presentation Format: frt_mg
Dataset Creation: Thu Jan 02 18:23:47 2003 by Loc 6.2_B4

80	STATIC TEMP (degF)	120
80	DYNAMIC TEMP (degF)	120

20	STATIC FLUID CONDUCTIVITY	200000
20	DYNAMIC FLUID CONDUCTIVITY	200000







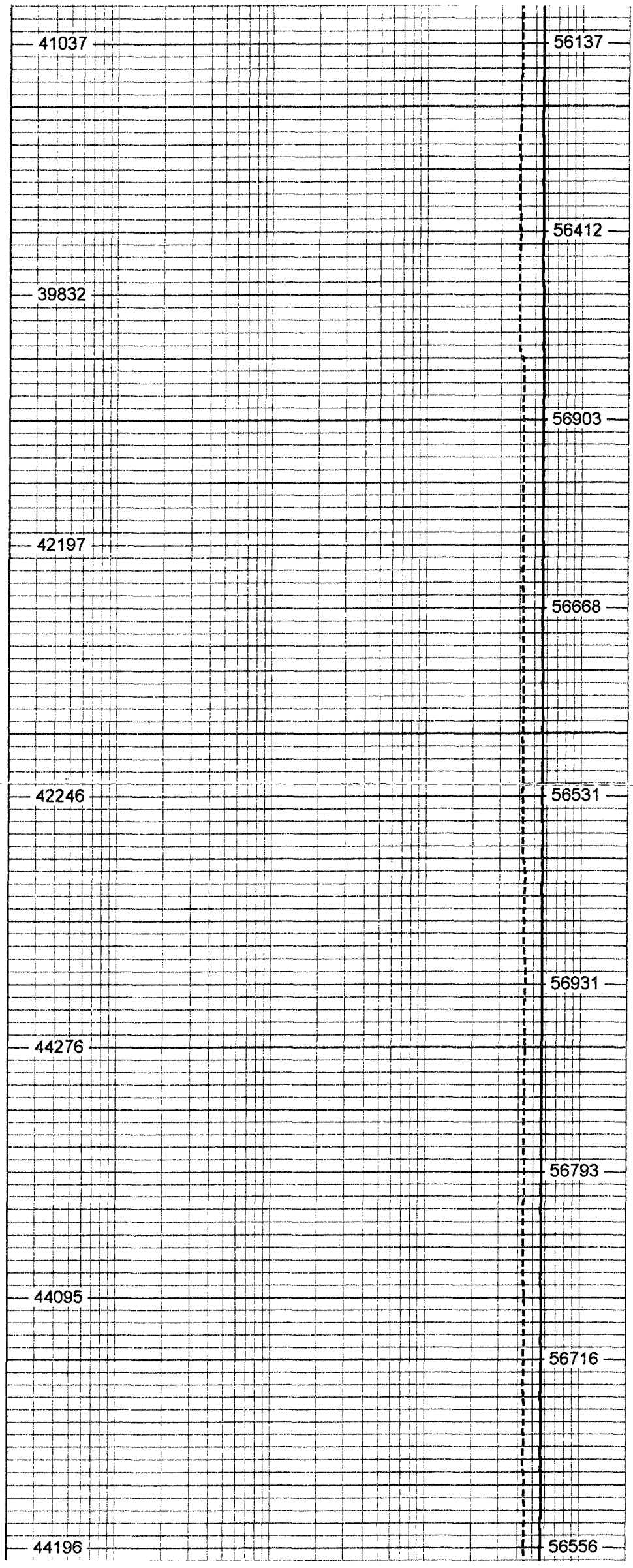
2050

2100

2150

2200

2250



56137

56412

56903

56668

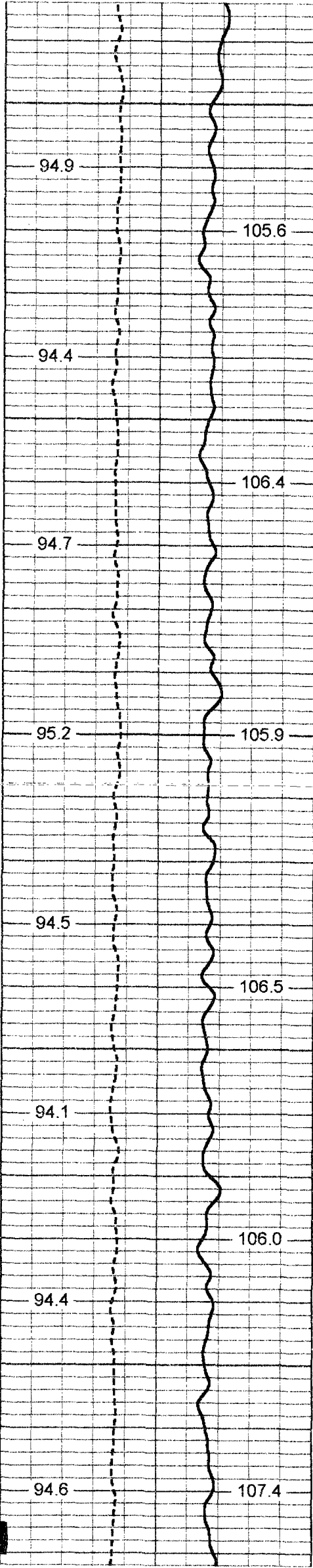
56531

56931

56793

56716

56556



2300

94.9

105.6

43634

56693

94.4

2350

106.4

43798

56514

94.7

2400

105.9

44466

56904

95.2

94.5

106.5

43860

56827

2450

94.1

106.0

43780

56811

56929

94.4

2500

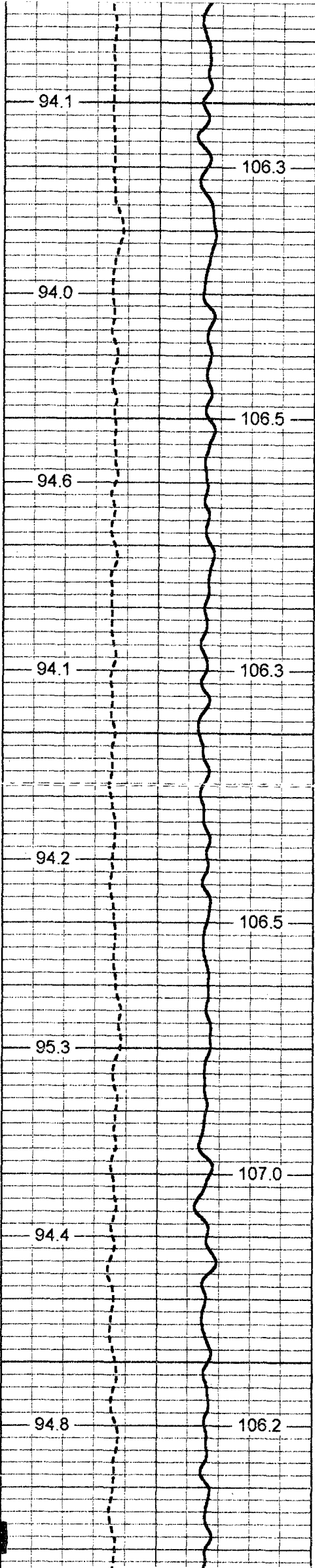
107.4

43425

57052

94.6

57180



2550

106.3

2600

106.5

106.3

2650

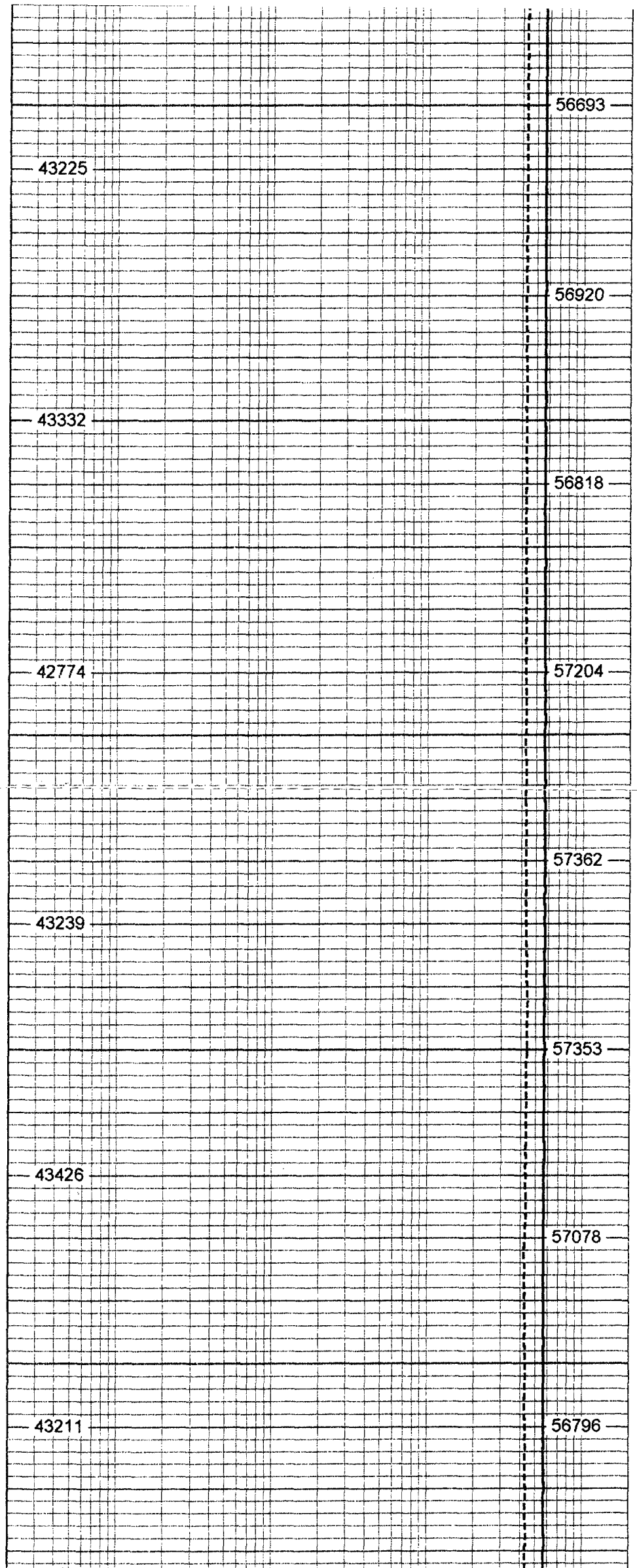
106.5

2700

107.0

2750

106.2



56693

56920

56818

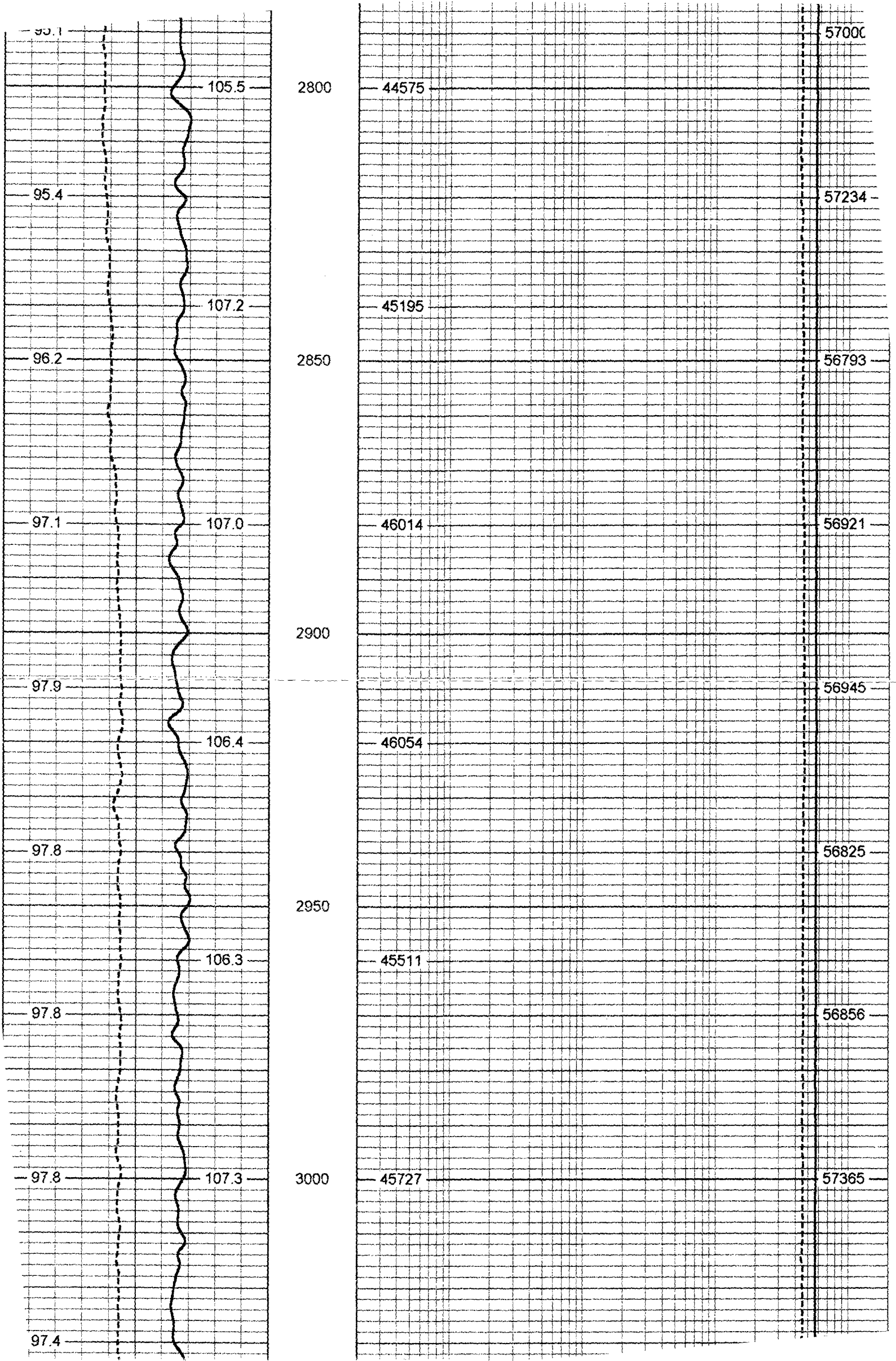
57204

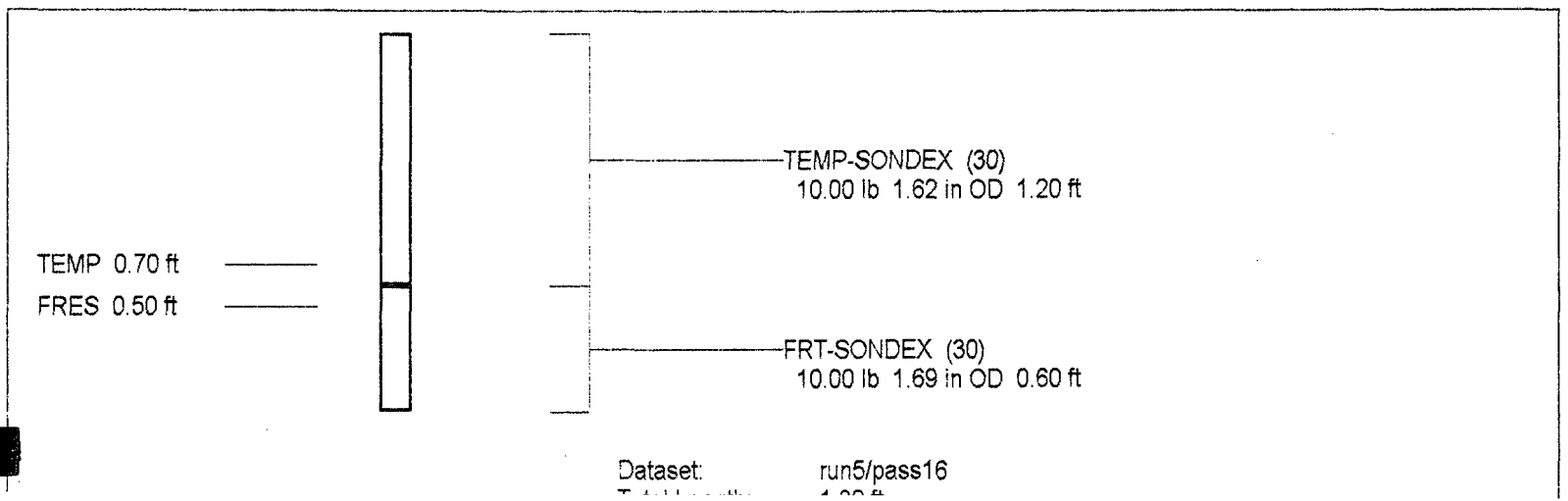
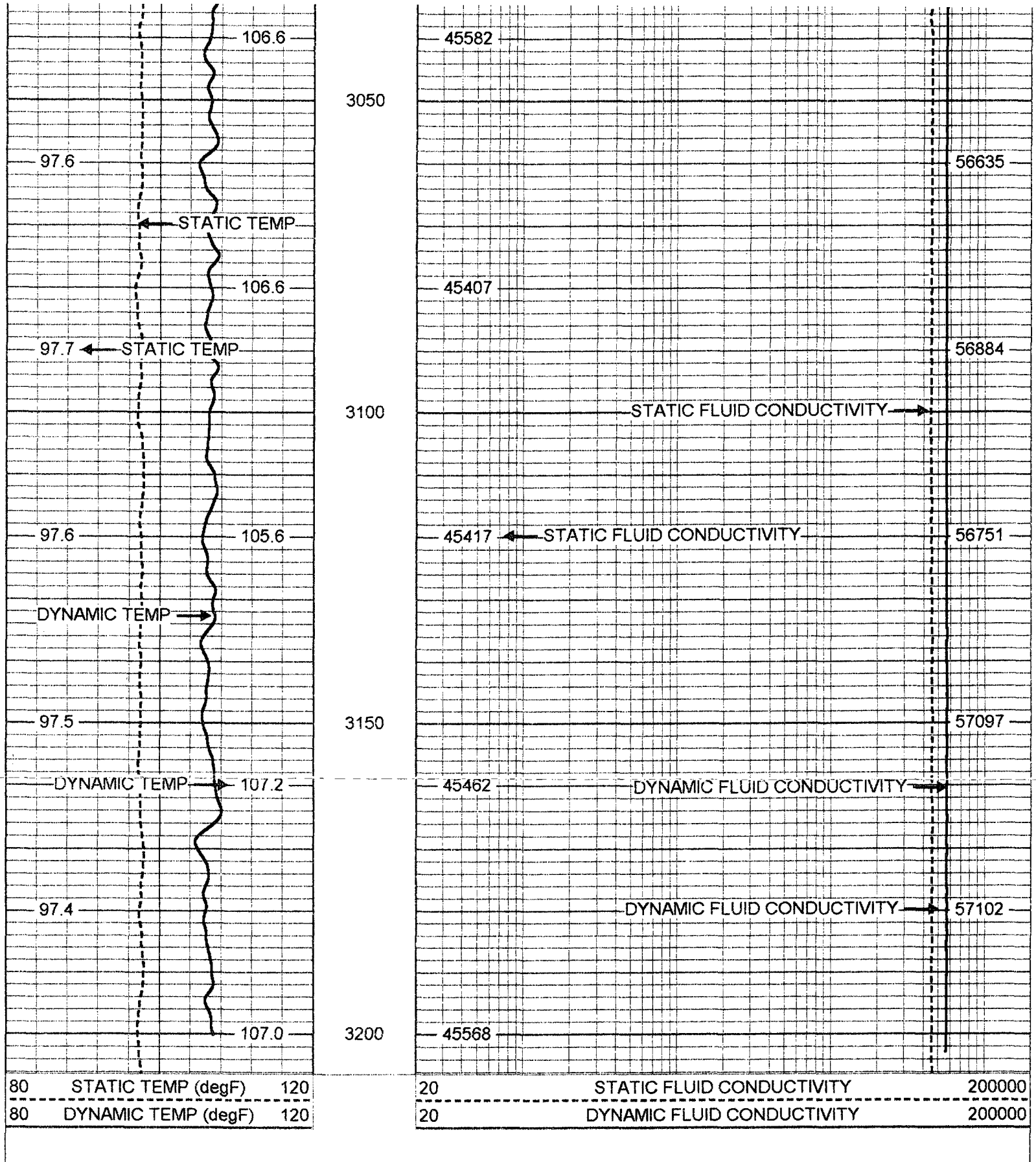
57362

57353

57078

56796





Total Weight: 20.00 lb
O.D. 1.69 in

FRT Calibration Report

Serial Number: 30
Tool Model: SONDEX
Performed: Thu Apr 18 14:47:29 2002

Point #	Reading		Reference
1	42.904	cps	1000.000
2	309.469	cps	10000.000
3	858.679	cps	25000.000
4	1742.780	cps	50000.000
5	3177.680	cps	70000.000
6		cps	

Temperature Calibration Report

Serial Number: 30
Tool Model: SONDEX
Performed: Thu Apr 18 13:26:57 2002

Point #	Reading		Reference	
1	109.698	cps	34	degF
2	681.903	cps	150	degF
3		cps		degF