



**YOUNGQUIST BROTHERS, Inc**  
GEOPHYSICAL LOGGING DIVISION

**FLUID CONDUCTIVITY TEMPERATURE LOG**

Company CH2M HILL  
Well RO DEEP IW #1  
Field BONITA SPRINGS W.T.P  
County LEE  
State FLORIDA

Company	CH2M HILL	Location		Other Services	
Well	RO DEEP IW #1	Permanent Datum	PAD	SEE COMMENTS	
Field	BONITA SPRINGS W.T.P.	Log Measured From	PAD		
County	LEE	Drilling Measured From	PAD		
State	FLORIDA			Elevation	

Date	2-JAN-2003
Run Number	FIVE
Depth Driller	3205'
Depth Logger	3206'
Bottom Logged Interval	3206'
Top Log Interval	CASING
Open Hole Size	12.25"
Type Fluid	WATER
Density / Viscosity	N/A
Max. Recorded Temp.	107 DEGF
Estimated Cement Top	N/A
Time Well Ready	ON ARRIVAL
Time Logger on Bottom	1000
Equipment Number	101
Location	FT MYERS
Recorded By	DENISON/BARRETT
Witnessed By	D. JABLONSKI

Borehole Record		Tubing Record					
Run Number	Bit	From	To	Size	Weight	From	To
ONE	12.25"	CASING	500'				
TWO	48.5"	CASING	455'				
THREE	36.5"	CASING	1600'				
FOUR	12.25"	CASING	3205'				
Casing Record	Size	Wd/Ft	Top	Bottom			
Surface String	50"	375 W.T.	SURFACE	49'			
Prot. String	38"	375 W.T.	SURFACE	450'			
Production String	30"	375 W.T.	SURFACE	1600'			
Liner							

<<< Fold Here >>>

All interpretations are opinions based on inferences from electrical or other measurements and we cannot and do not guarantee the accuracy or correctness of any interpretation, and we shall not, except in the case of gross or willful negligence on our part, be liable or responsible for any loss, costs, damages, or expenses incurred or sustained by anyone resulting from any interpretation made by any of our officers, agents or employees. These interpretations are also subject to our general terms and conditions set out in our current Price Schedule.

**Comments**

DYNAMIC FLOWRATE = 1100 GPM

OTHER SERVICES:  
DIL/LL3/SP  
XYC/GR  
FLOWMETER  
SONIC  
VIDEO

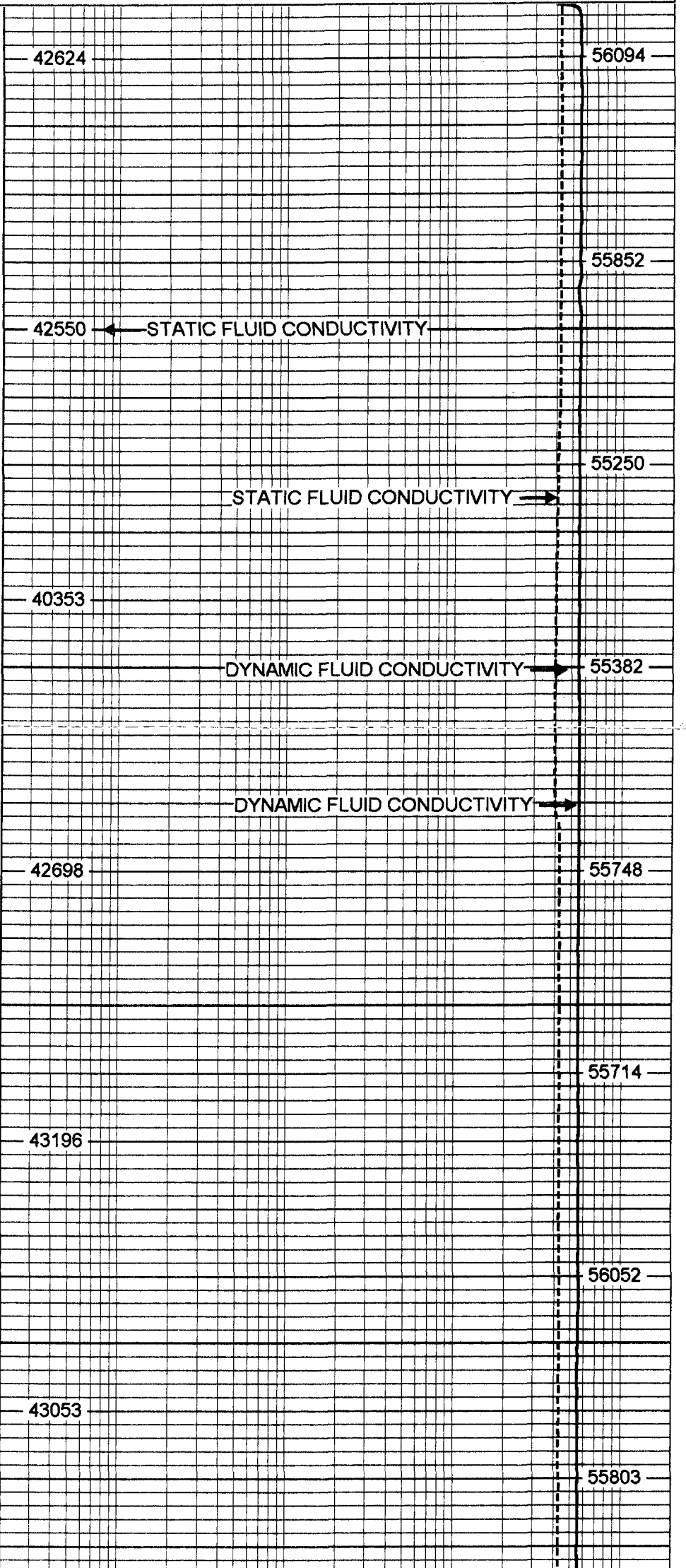
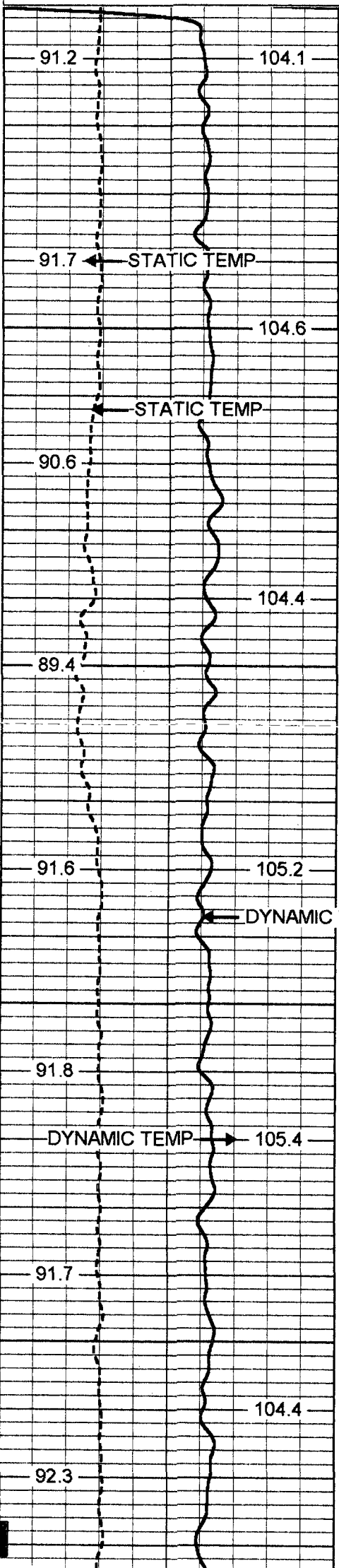


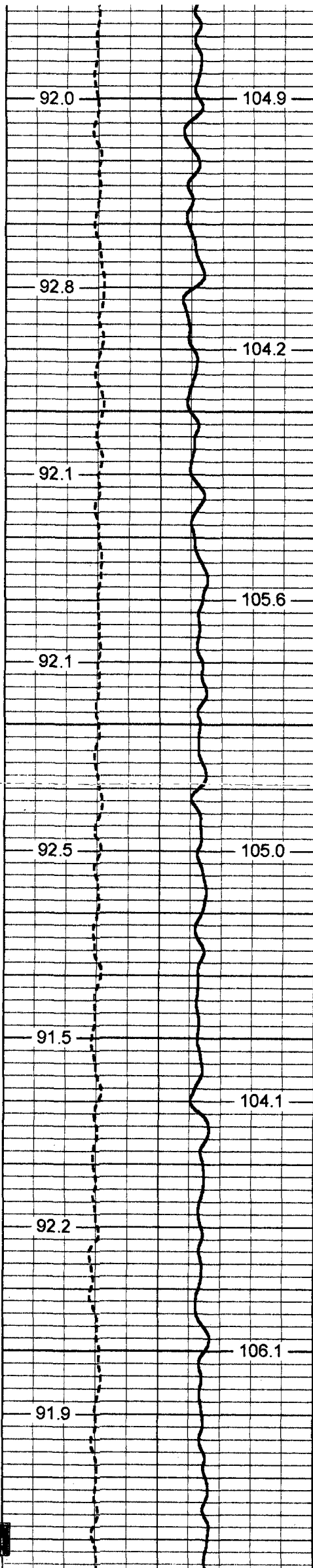
**MERGED FCT/TEMP**

Database File: bsroiw1.db  
Dataset Pathname: run5/pass16  
Presentation Format: frt\_mg  
Dataset Creation: Thu Jan 02 18:23:47 2003 by Log 6.2\_B4

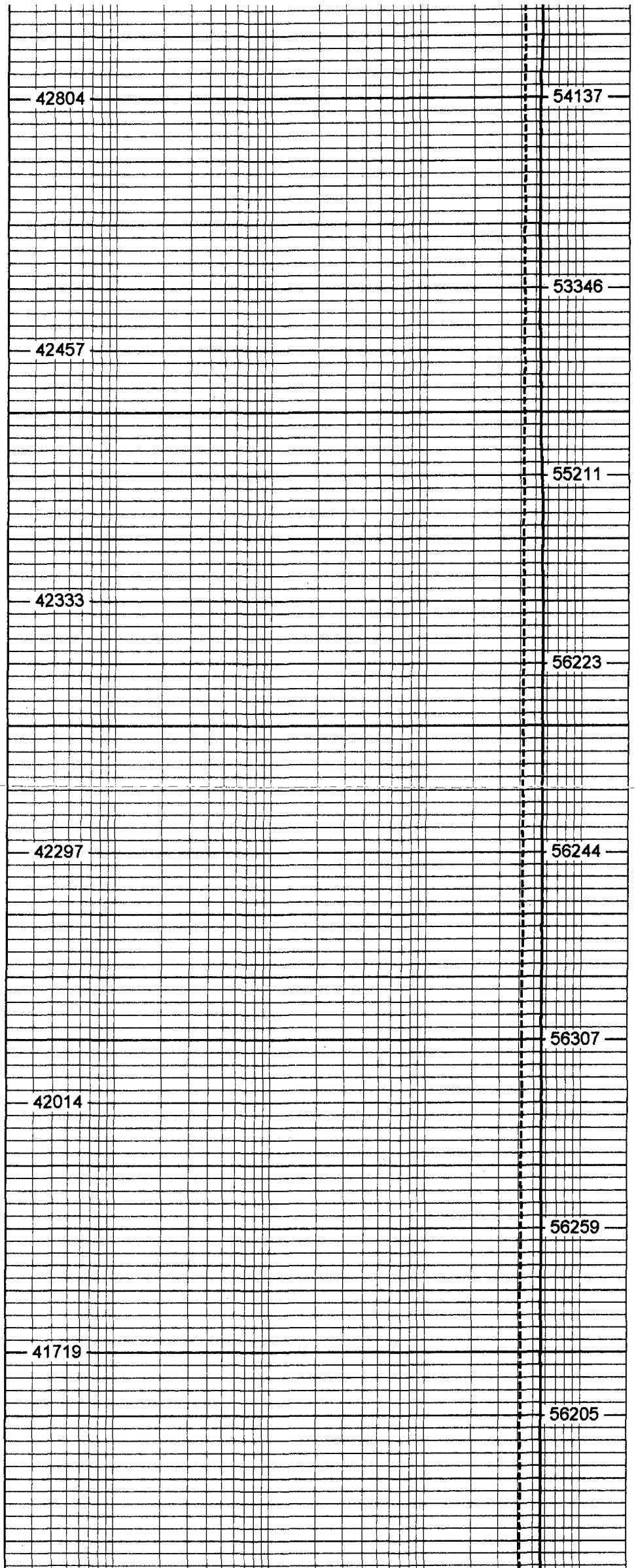
80	STATIC TEMP (degF)	120
80	DYNAMIC TEMP (degF)	120

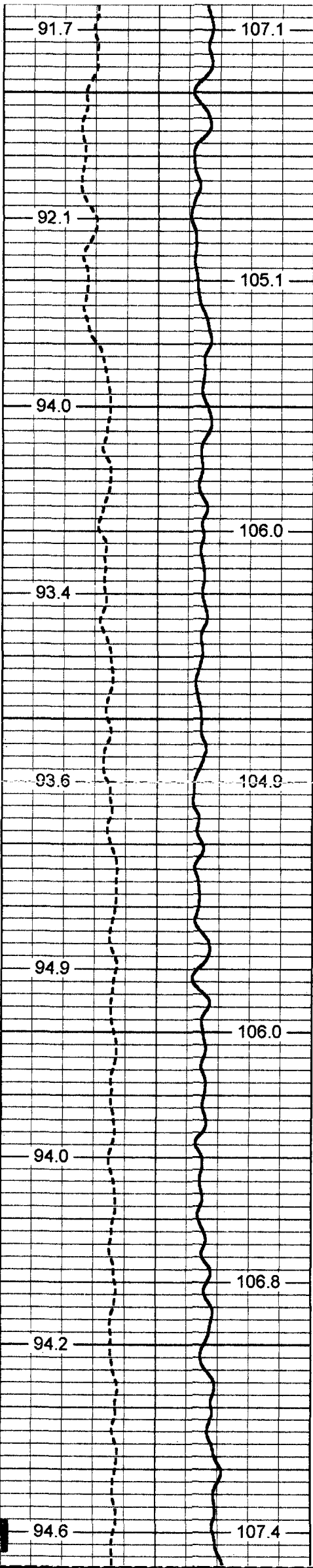
20	STATIC FLUID CONDUCTIVITY	200000
20	DYNAMIC FLUID CONDUCTIVITY	200000



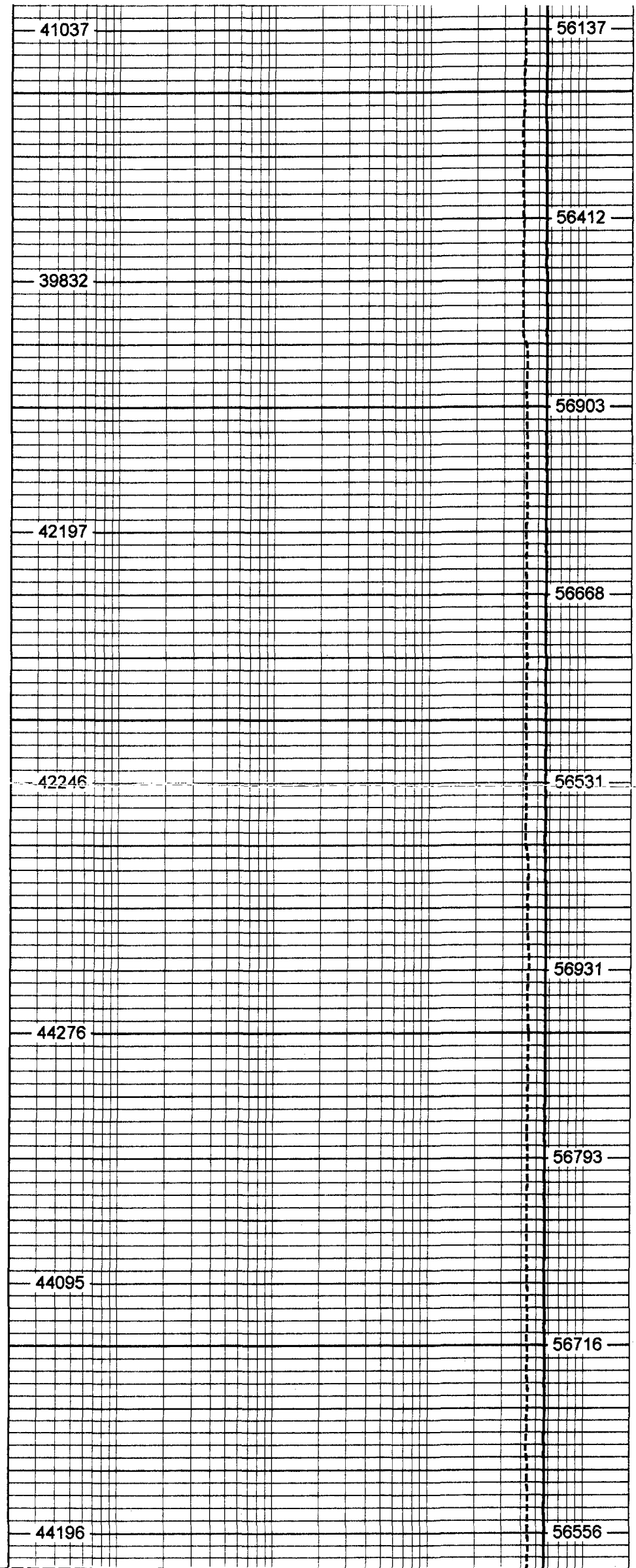


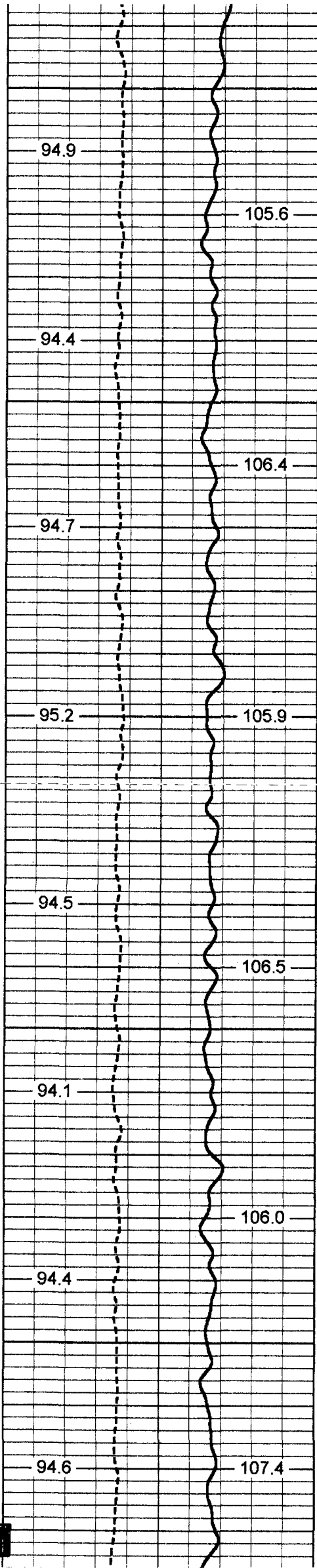
1800  
1850  
1900  
1950  
2000





2050  
2100  
2150  
2200  
2250





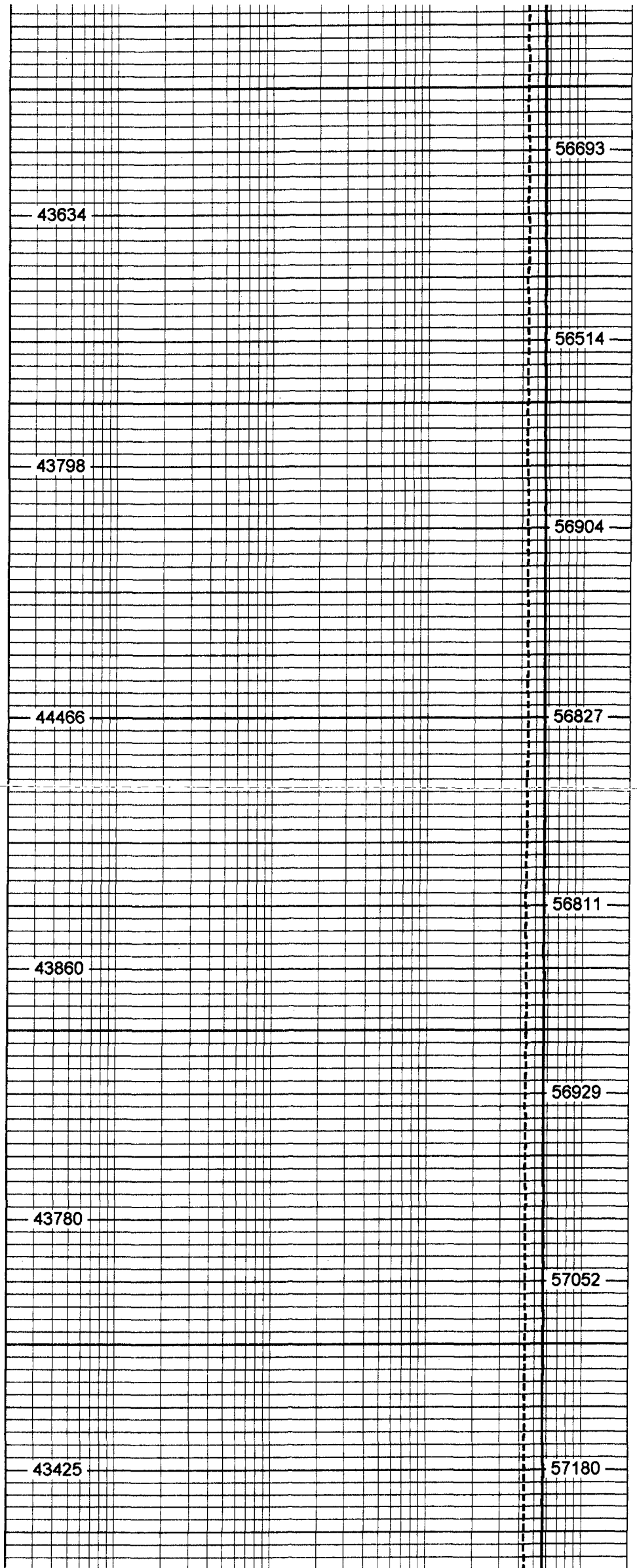
2300

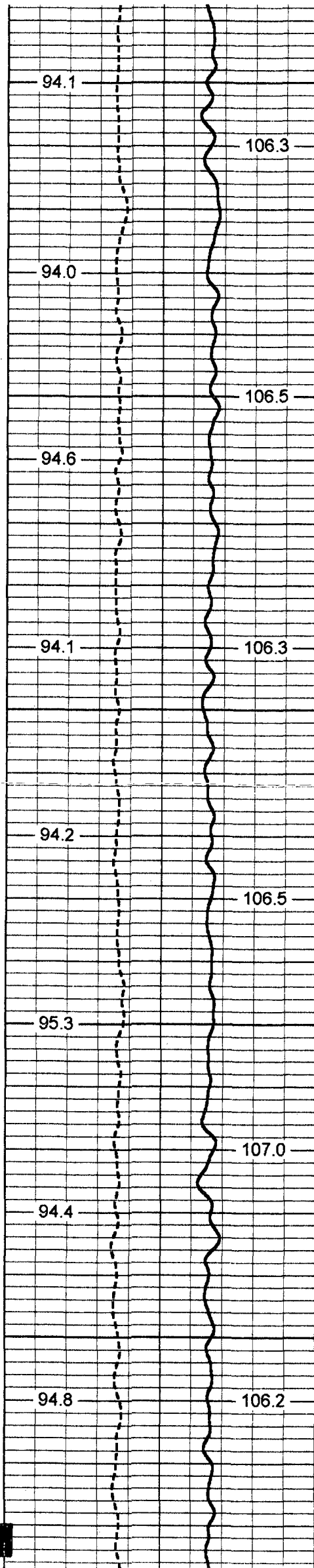
2350

2400

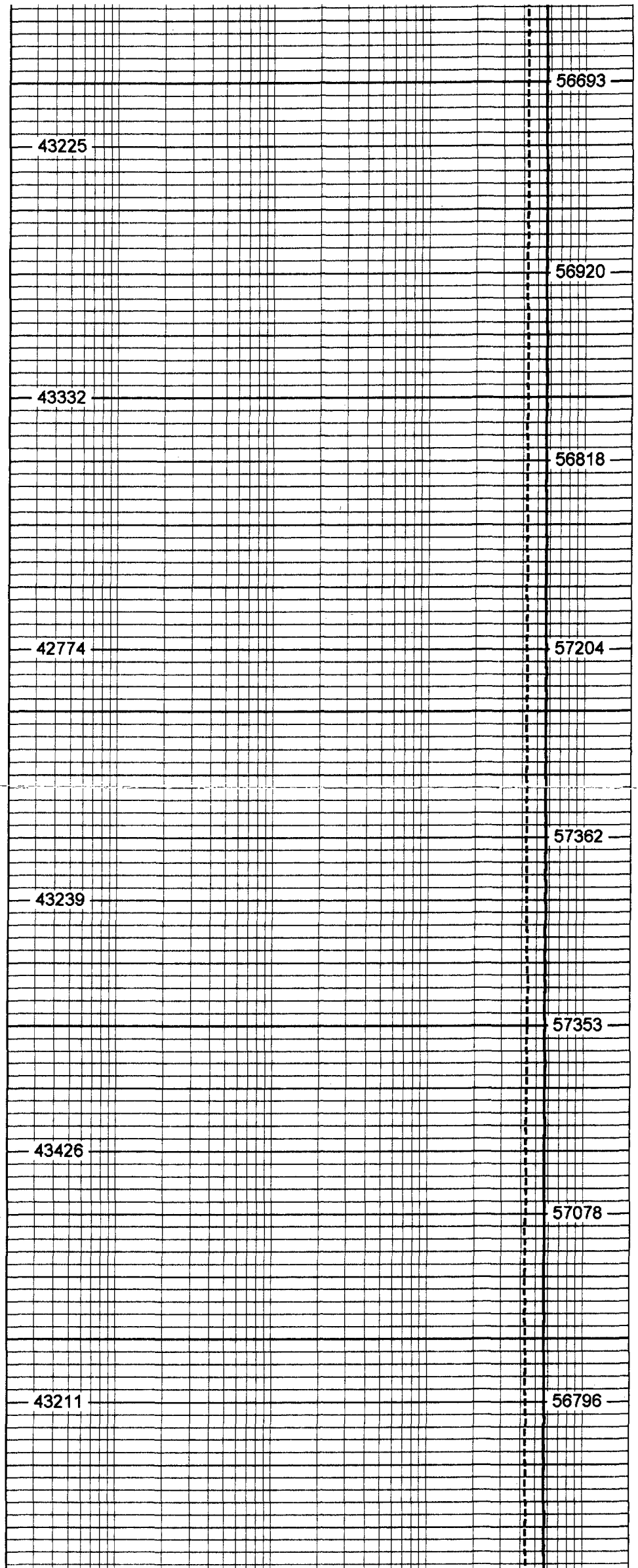
2450

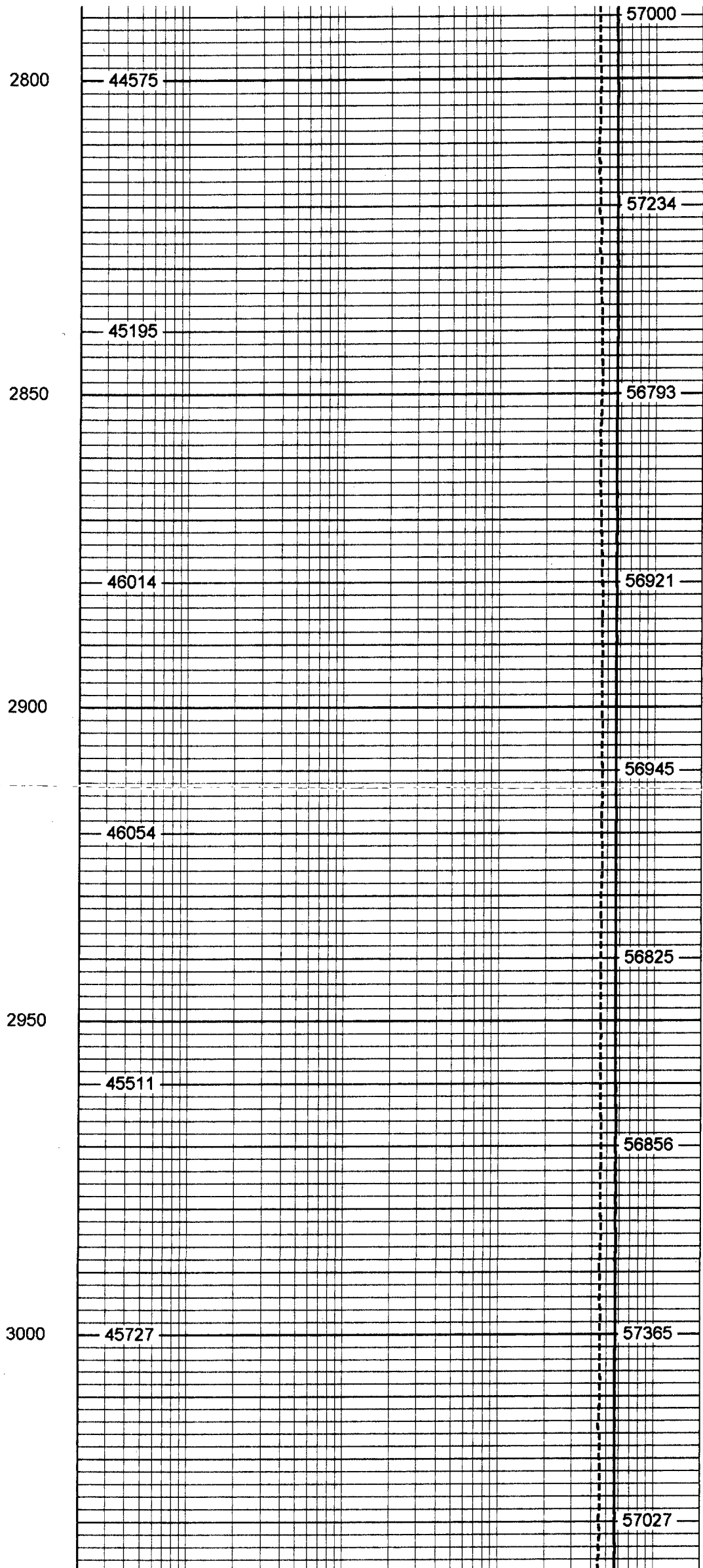
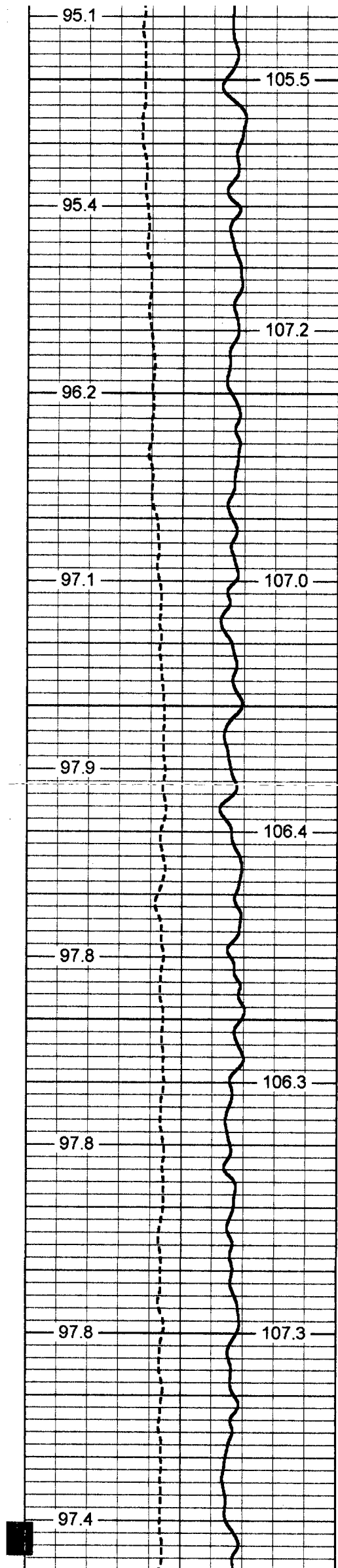
2500

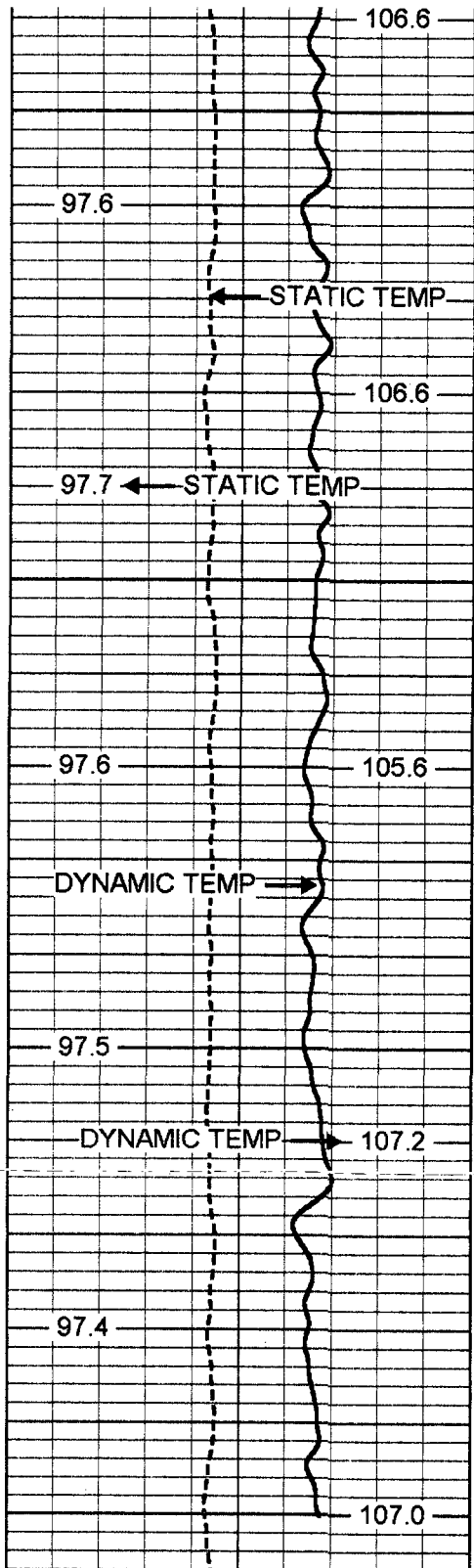




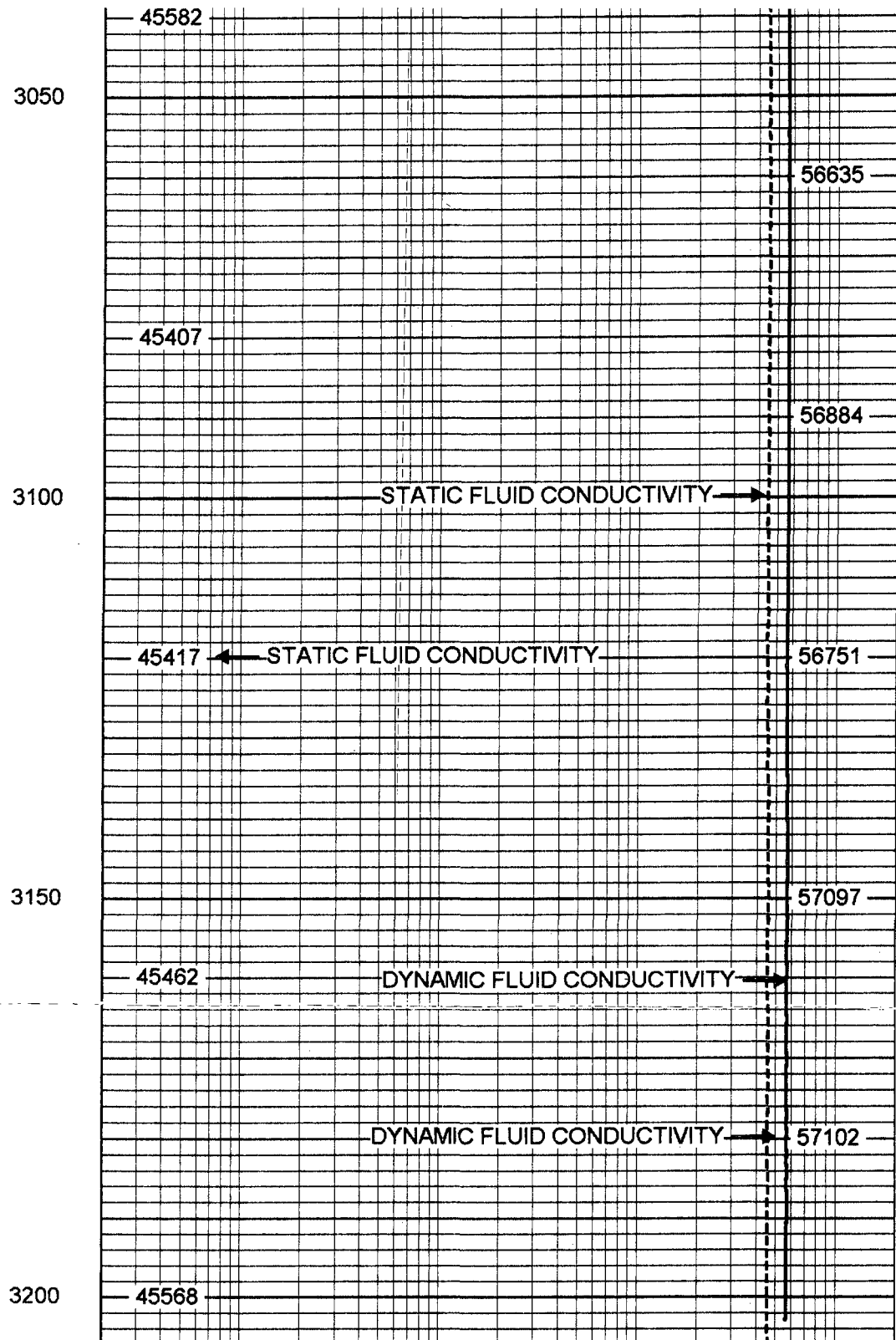
2550  
2600  
2650  
2700  
2750



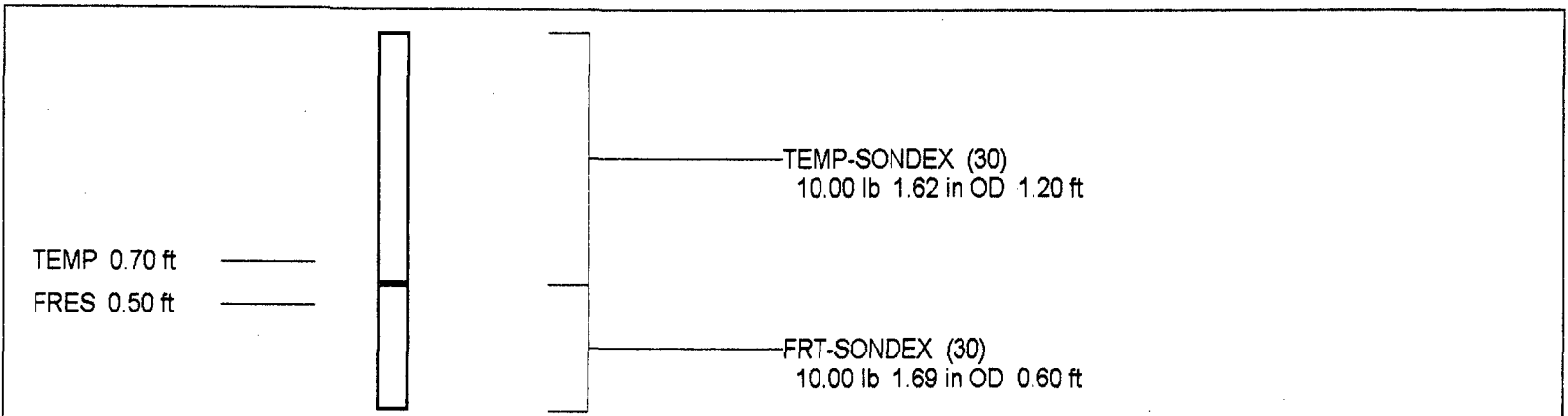




80	STATIC TEMP (degF)	120
80	DYNAMIC TEMP (degF)	120



20	STATIC FLUID CONDUCTIVITY	200000
20	DYNAMIC FLUID CONDUCTIVITY	200000



Dataset: run5/pass16  
 Total Length: 1.80 ft  
 Total Weight: 20.00 lb



FRT Calibration Report

Serial Number: 30  
Tool Model: SONDEX  
Performed: Thu Apr 18 14:47:29 2002

Point #	Reading		Reference
1	42.904	cps	1000.000
2	309.469	cps	10000.000
3	858.679	cps	25000.000
4	1742.780	cps	50000.000
5	3177.680	cps	70000.000
6		cps	

Temperature Calibration Report

Serial Number: 30  
Tool Model: SONDEX  
Performed: Thu Apr 18 13:26:57 2002

Point #	Reading		Reference	
1	109.698	cps	34	degF
2	681.903	cps	150	degF
3		cps		degF