

HIGH RESOLUTION TEMPERATURE SURVEY

Company CH2M HILL
Well RO DEEP IW #1
Field BONITA SPRINGS W.T.P
County LEE
State FLORIDA

Company CH2M HILL
Well RO DEEP IW #1
Field BONITA SPRINGS W.T.P.
County LEE
State FLORIDA

Location *Nov 9 2004*
DEEP SOUTH DISTRICT

Permanent Datum PAD
Log Measured From PAD
Drilling Measured From PAD

Elevation
RTS
Other Services
Elevation
K.B.
D.F.
G.L.

Date	MAY 15, 2003	
Run Number	TEN	
Depth Driller	3206'	
Depth Logger	3206'	
Bottom Logged Interval	3206'	
Top Log Interval	SURFACE	
Open Hole Size	18.5"	
Type Fluid	WATER	
Density / Viscosity	N/A	
Max. Recorded Temp.	N/A	
Estimated Cement Top	N/A	
Time Well Ready	ON ARRIVAL	
Time Logger on Bottom	1000	
Equipment Number	103	
Location	FT. MYERS DENISON	
Recorded By	D. JABLONSKI	
Witnessed By	FERGUSON	

Run Number	Borehole Record		Tubing Record	
	Bit Size	From	To	Weight
ONE	12.25"	CASING	500'	
TWO	48.5"	CASING	455'	
FIVE	28.5"	CASING	2696'	
SIX	18.5"	2696'	3206'	

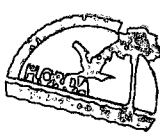
Casing Record	Surface String	Prod. String	Production String	Liner	Weight	
					Wt/Ft	Bottom
50'	38'	30'	20'	14.5"	3.75 W.T.	49'
					3.75 W.T.	450'
					3.75 W.T.	1600'
					5" W.T.	2704'
					FRP	2694'

<<< Fold Here >>>

All interpretations are opinions based on inferences from electrical or other measurements and we cannot and do not guarantee the accuracy or correctness of any interpretation, and we shall not, except in the case of gross or willful negligence on our part, be liable or responsible for any loss, costs, damages, or expenses incurred or sustained by anyone resulting from any interpretation made by any of our officers, agents or employees. These interpretations are also subject to our general terms and conditions set out in our current Price Schedule.

Comments

Entered into
OCULUS
South District



TEMPERATURE SURVEY

Charted by:

Depth in Feet scaled 1:240

50 TEMPERATURE (degF) 150

70

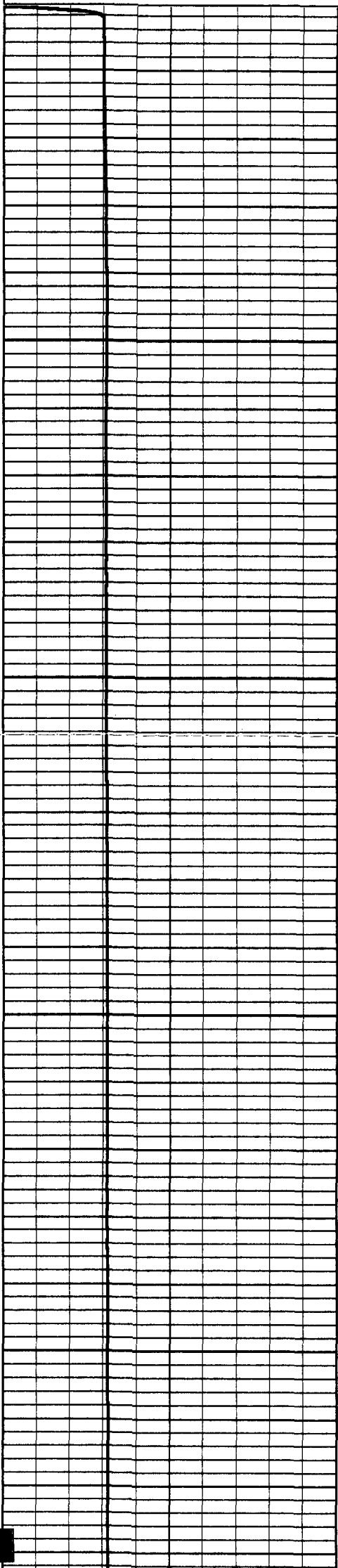
TEMPERATURE (degF)

110

-2

DELTA TEMPERATURE (degF)

2

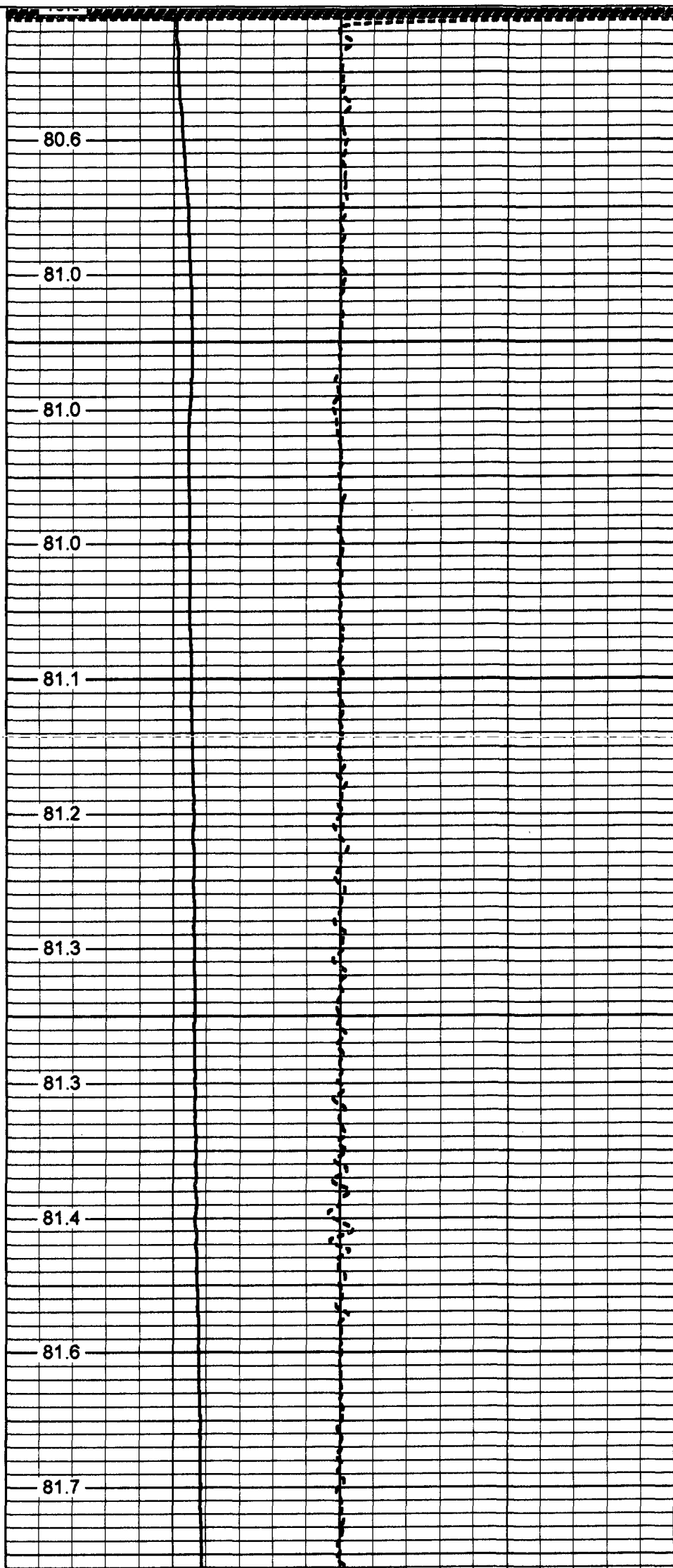


50

100

150

200



80.6

81.0

81.0

81.0

81.1

81.2

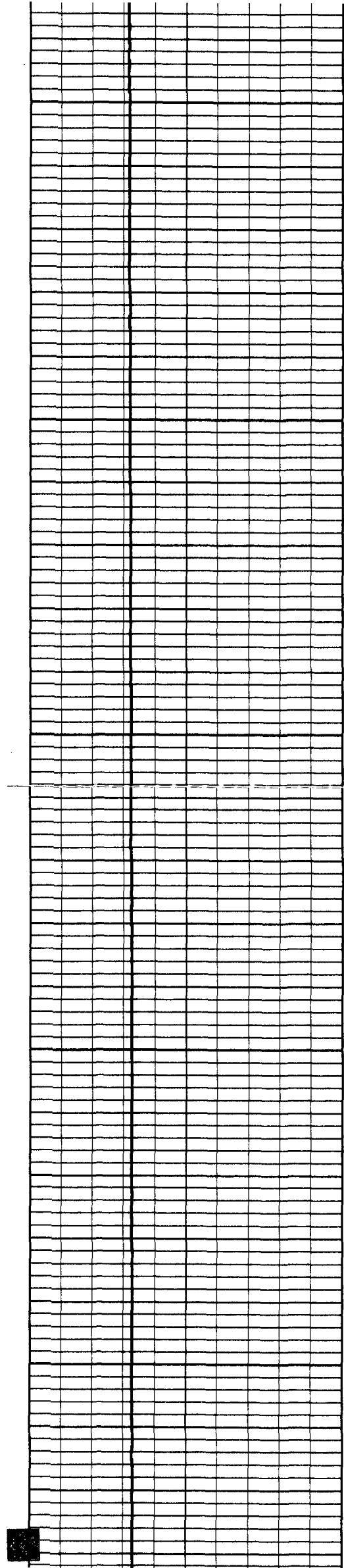
81.3

81.3

81.4

81.6

81.7



250

300

350

400

450

81.8

81.9

82.0

82.2

82.3

82.4

82.5

82.6

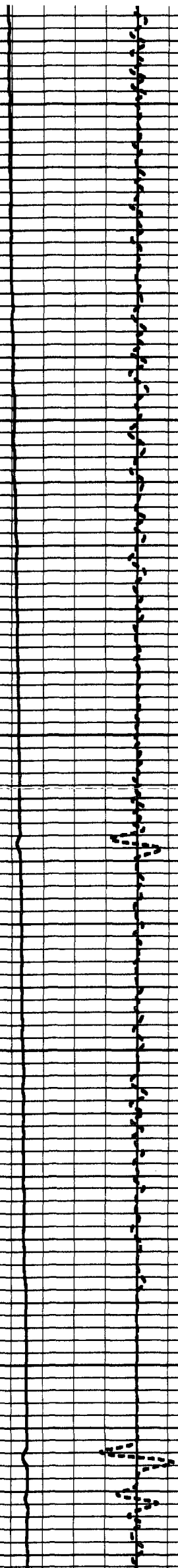
82.7

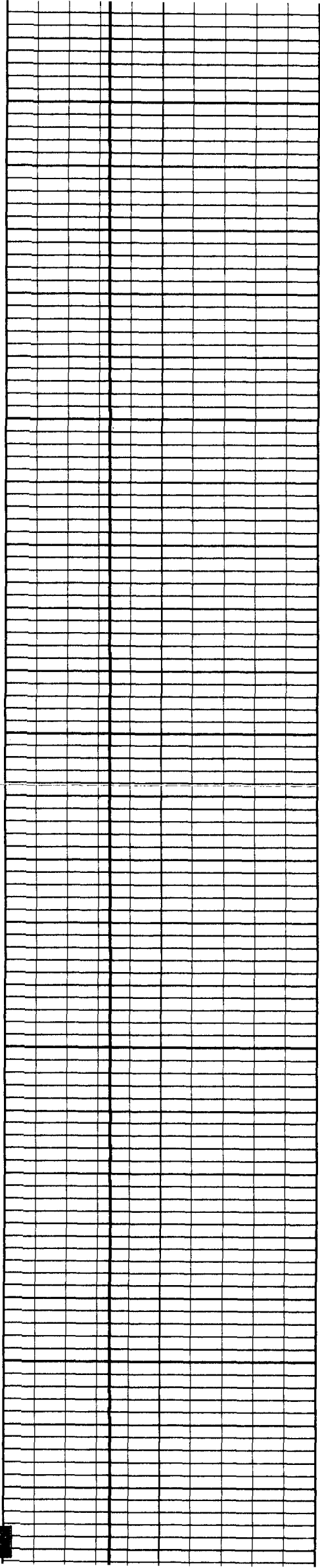
82.8

82.9

83.0

83.1





500

83.2

83.2

83.4

550

83.5

83.6

600

83.7

83.7

83.8

650

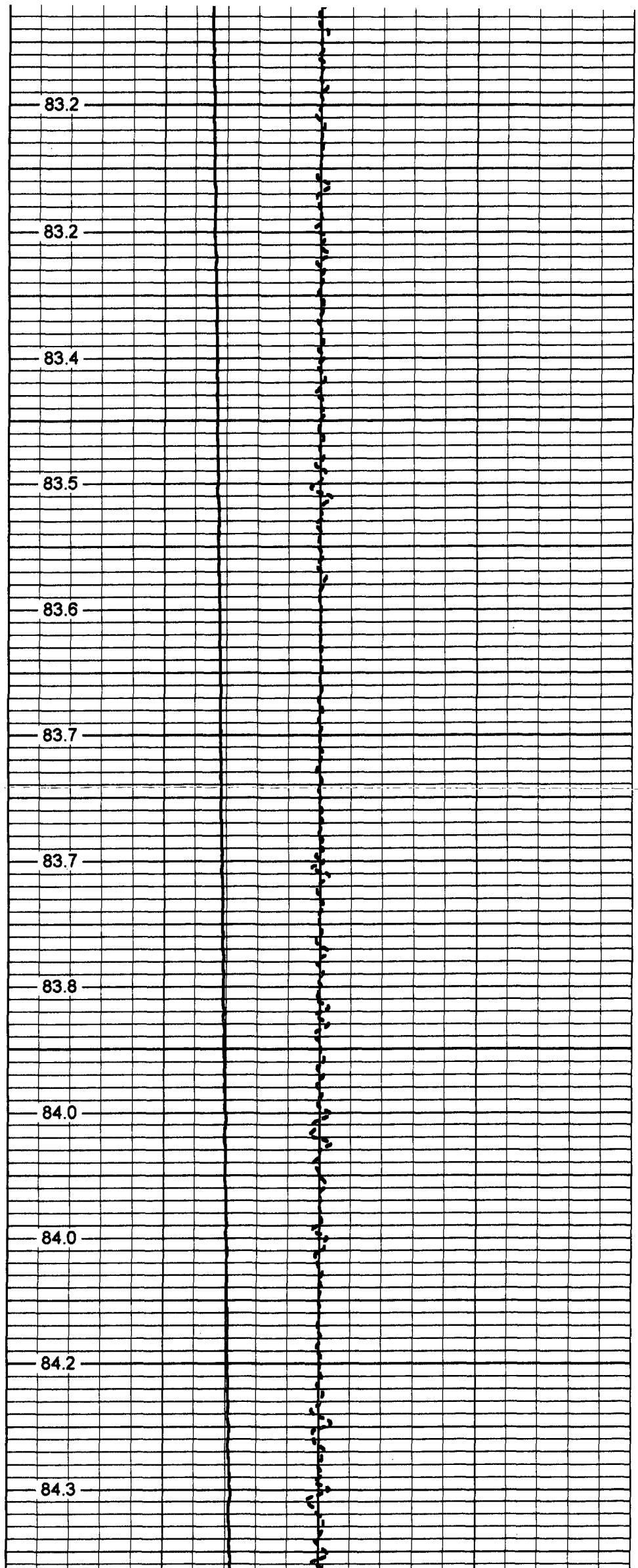
84.0

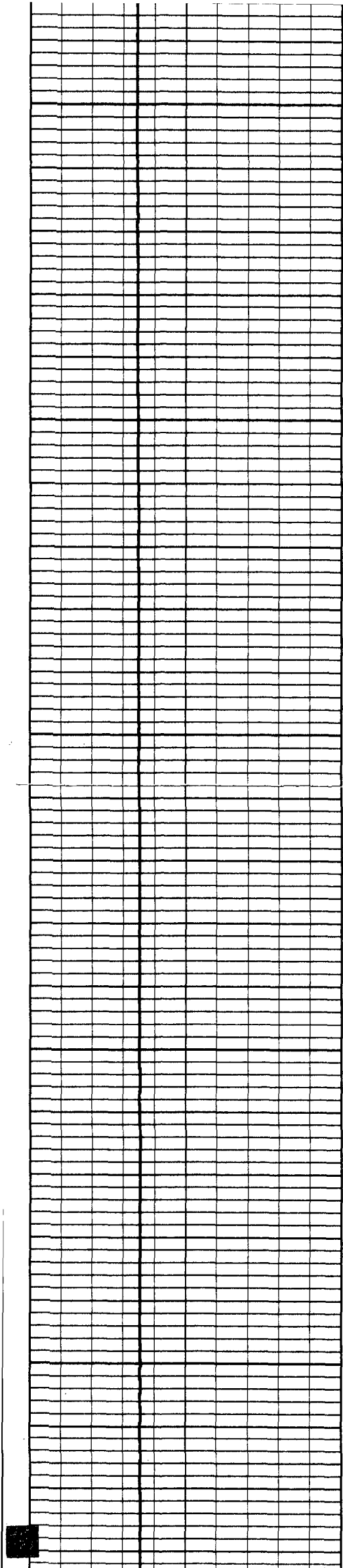
84.0

700

84.2

84.3





750

800

850

900

950

84.4

84.5

84.7

84.8

84.9

85.1

85.2

85.3

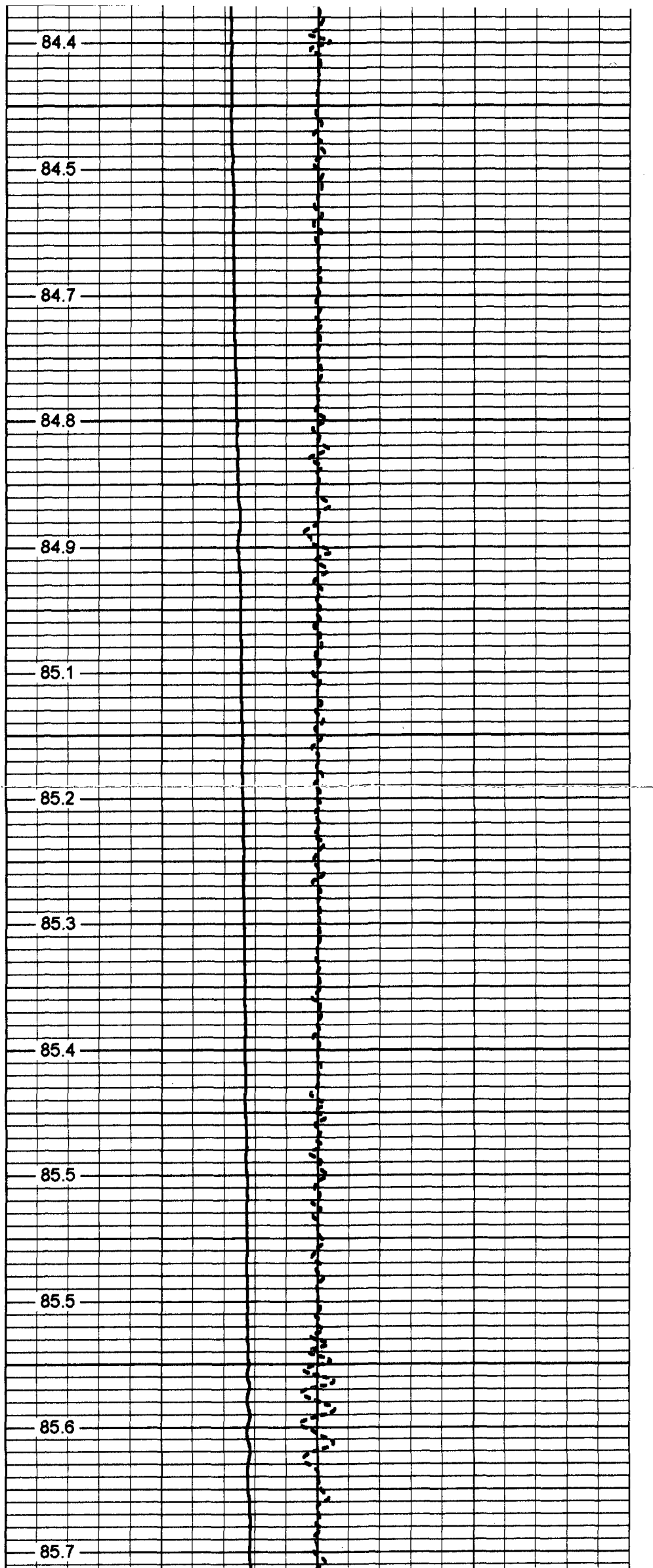
85.4

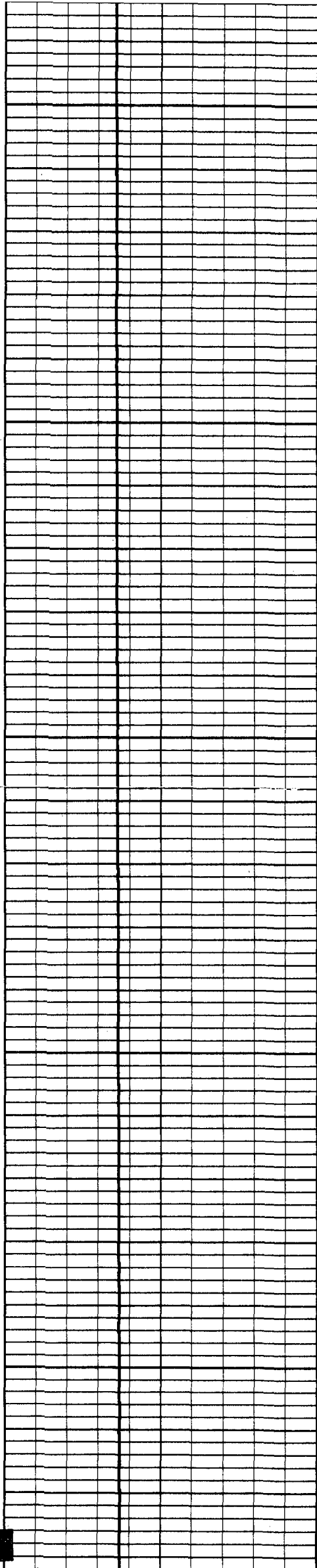
85.5

85.5

85.6

85.7





1000

85.8

85.8

86.0

1050

86.1

86.1

1100

86.3

86.4

86.5

1150

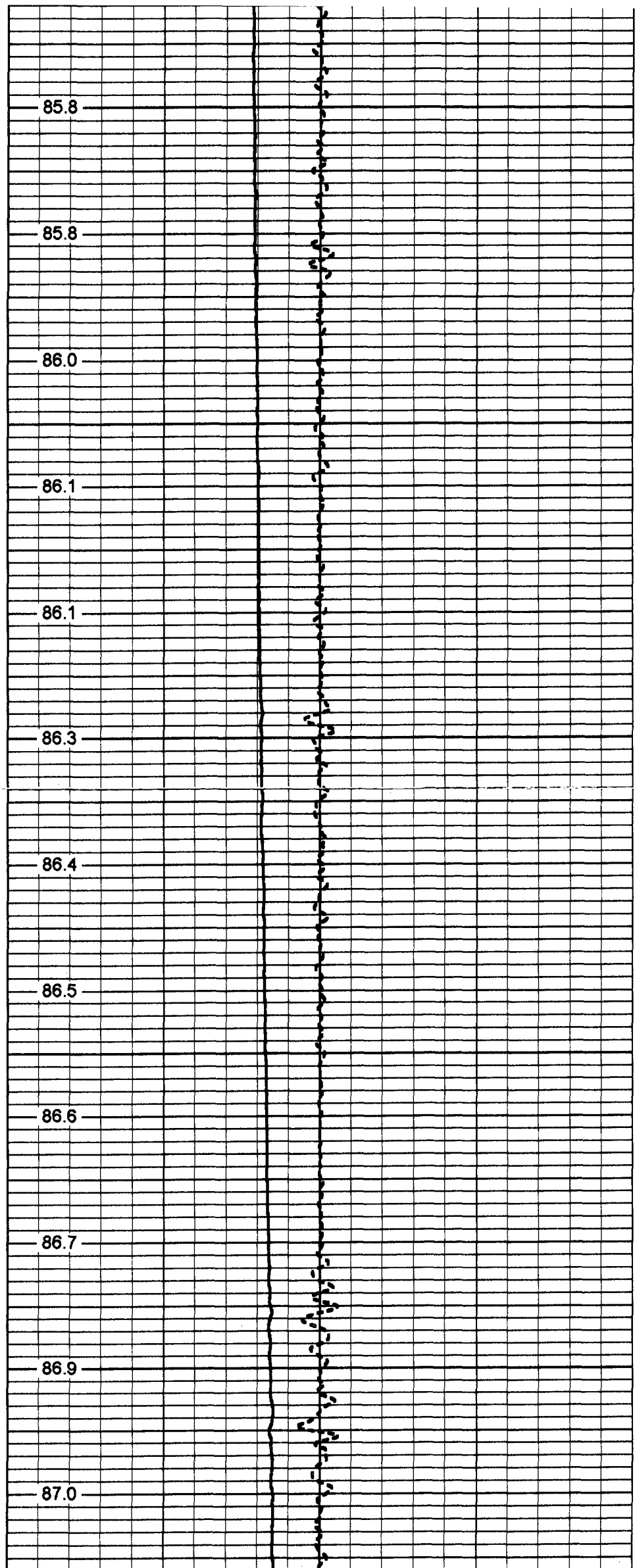
86.6

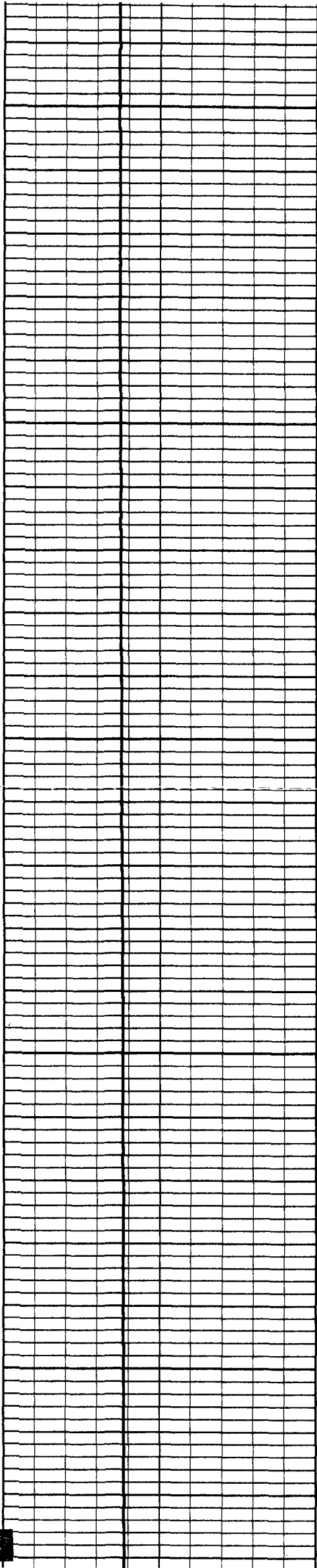
86.7

1200

86.9

87.0





1250

1300

1350

1400

1450

87.2

87.2

87.3

87.5

87.6

87.8

87.9

88.0

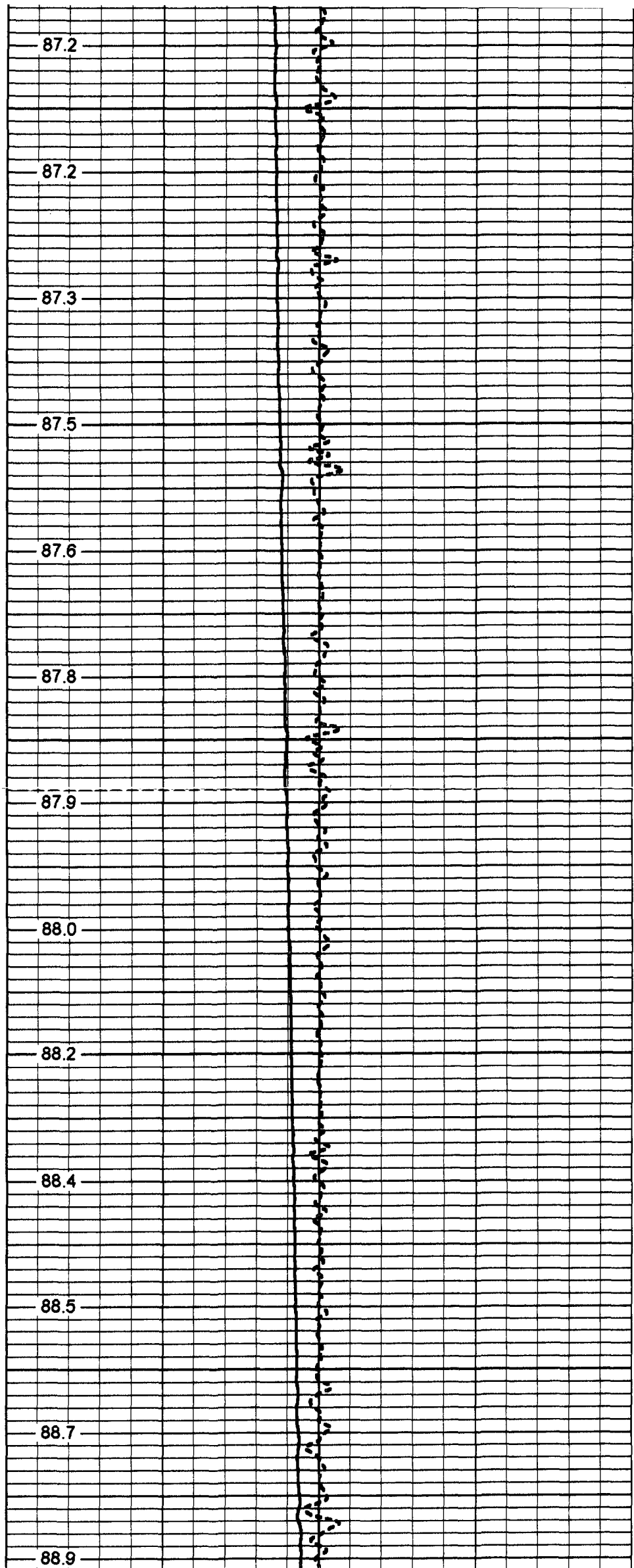
88.2

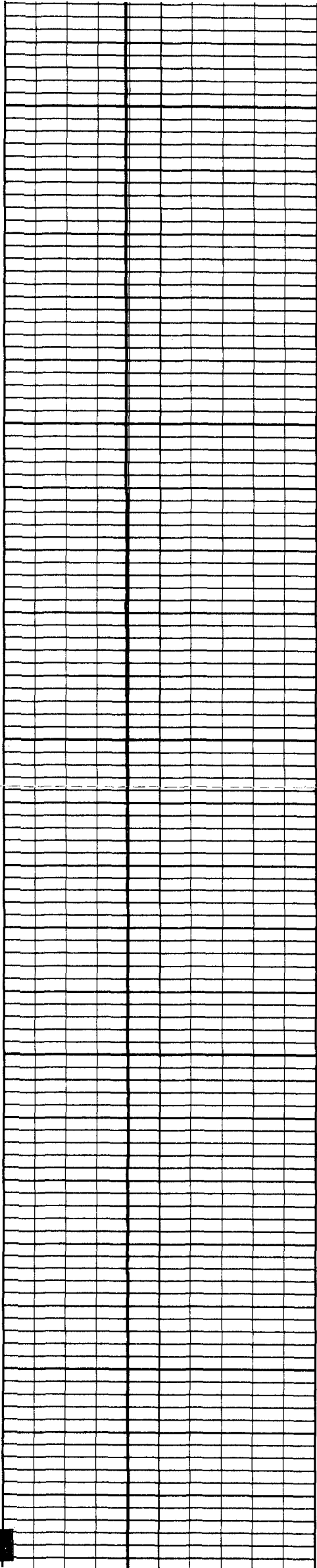
88.4

88.5

88.7

88.9





1500

89.0

89.1

89.3

1550

89.3

89.5

1600

89.7

89.7

89.9

1650

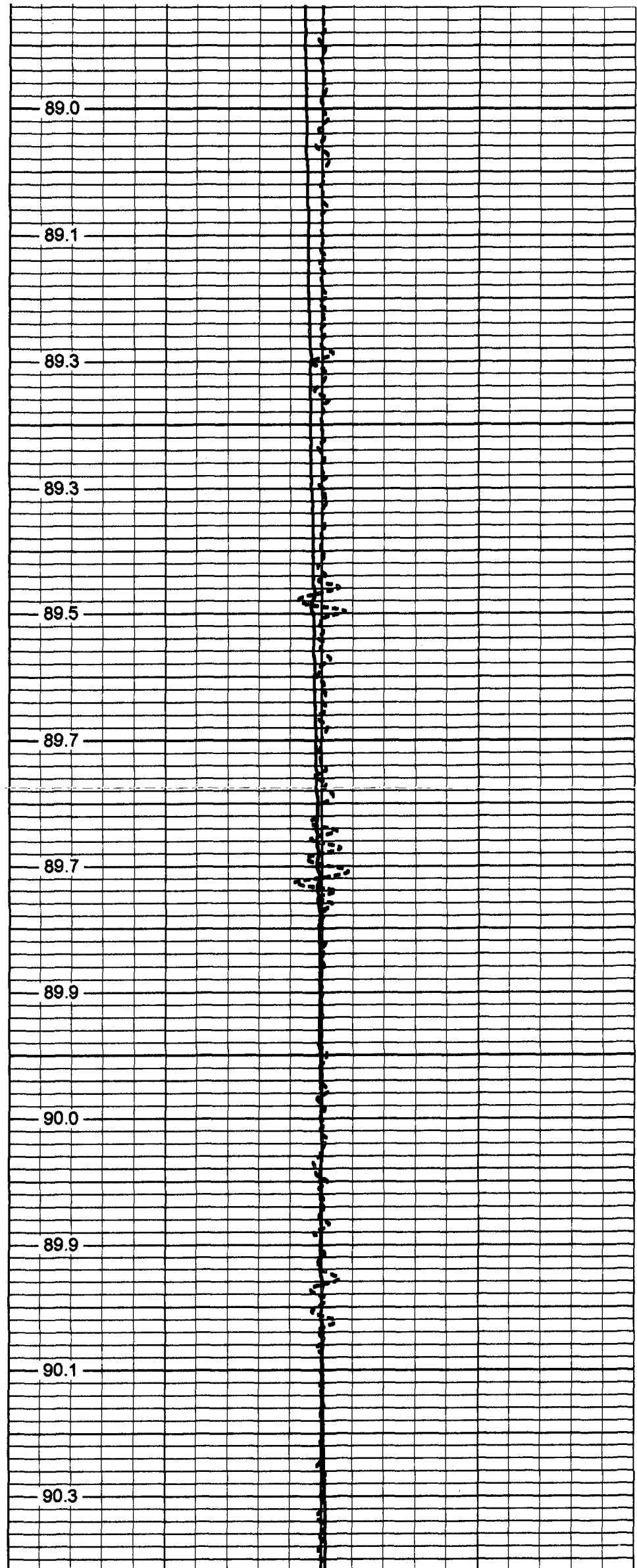
90.0

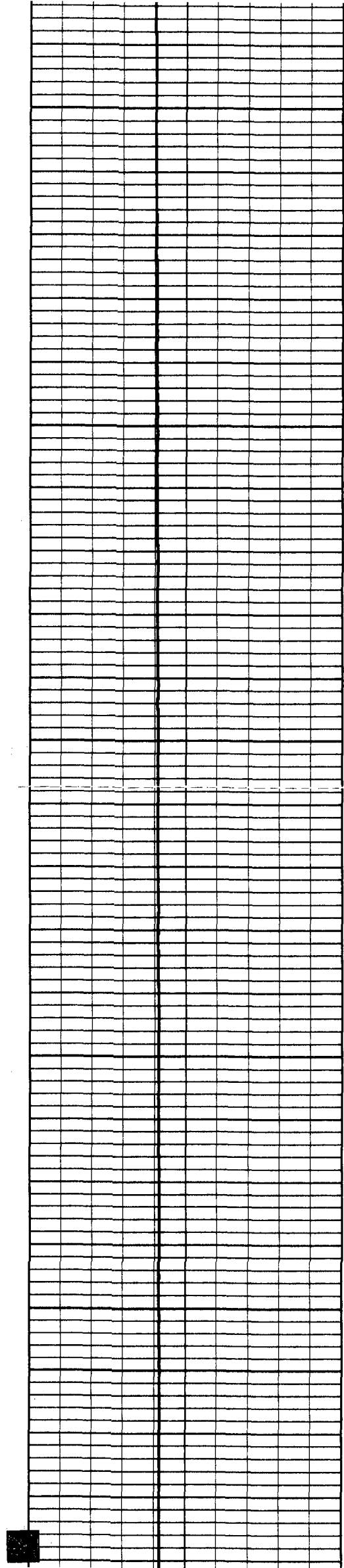
89.9

1700

90.1

90.3





1750

1800

1850

1900

1950

90.4

90.5

90.9

90.8

91.0

91.1

91.2

91.3

91.4

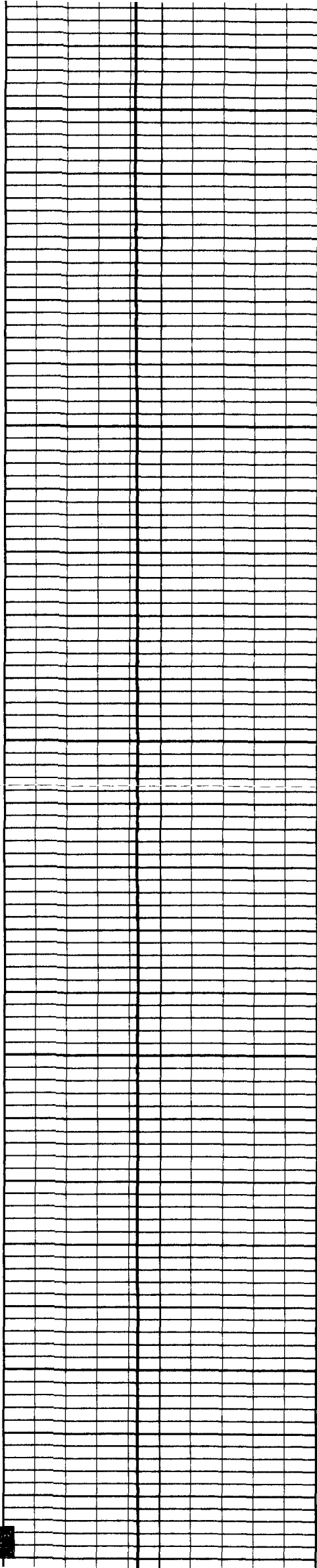
91.6

91.7

91.9

91.9





2000

91.8

91.9

92.3

2050

92.5

92.7

2100

92.8

92.7

92.8

2150

92.8

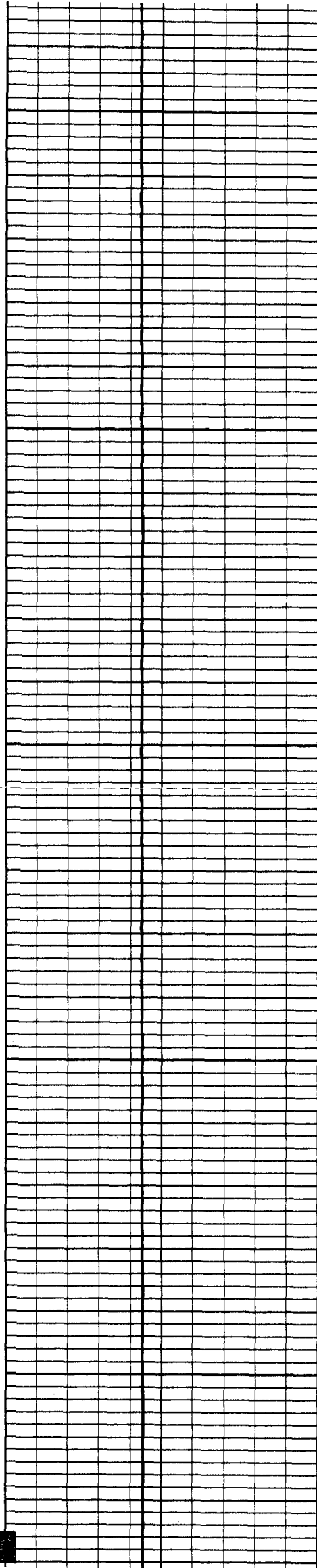
92.9

2200

93.1

93.2





2250

2300

2350

2400

2450

93.3

93.6

93.7

93.8

93.9

93.9

93.8

93.8

93.9

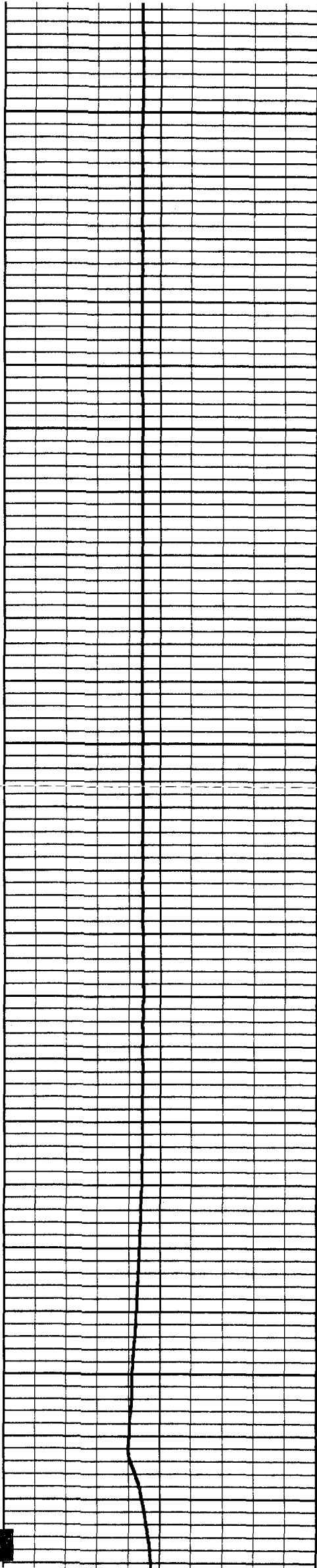
94.0

94.1

94.2

94.2





2500

2550

2600

2650

2700

94.3

94.3

94.2

94.4

94.5

94.5

94.6

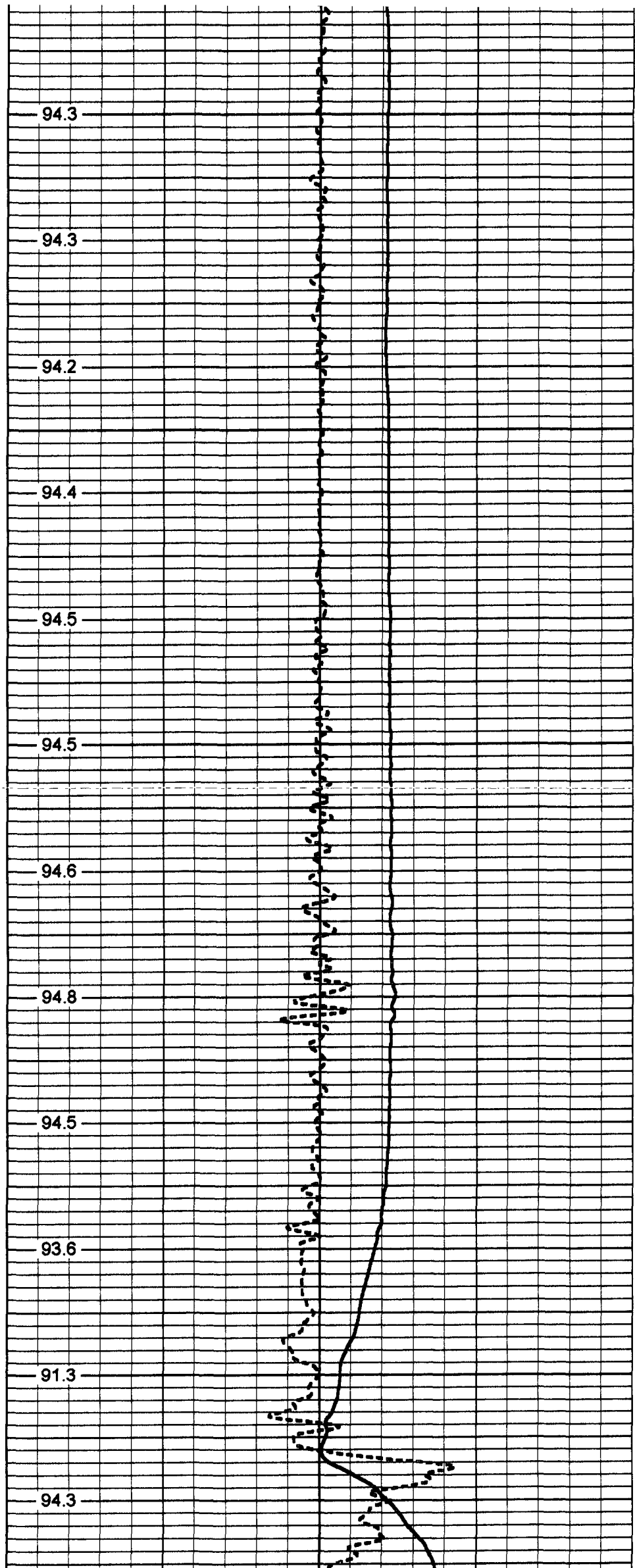
94.8

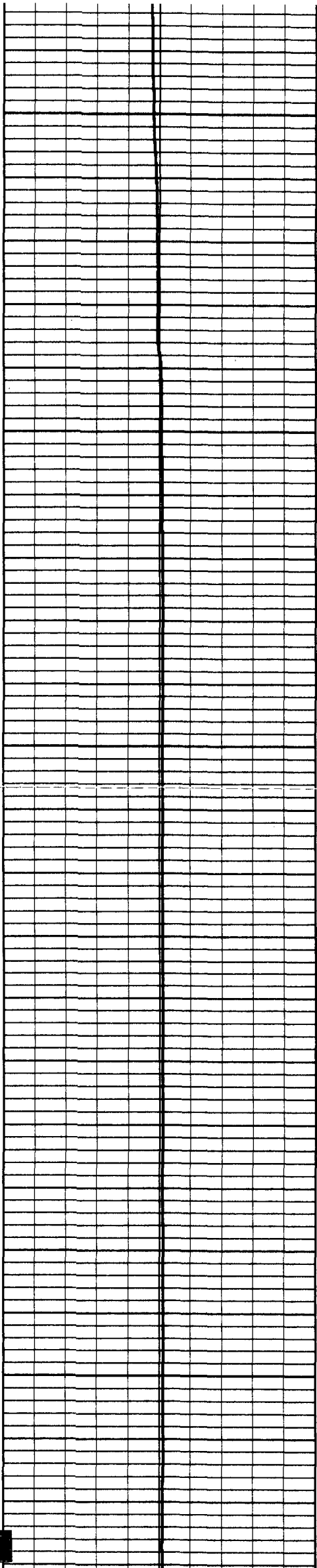
94.5

93.6

91.3

94.3





2750

2800

2850

2900

2950

97.8

99.1

99.6

100.8

101.2

101.3

101.2

101.2

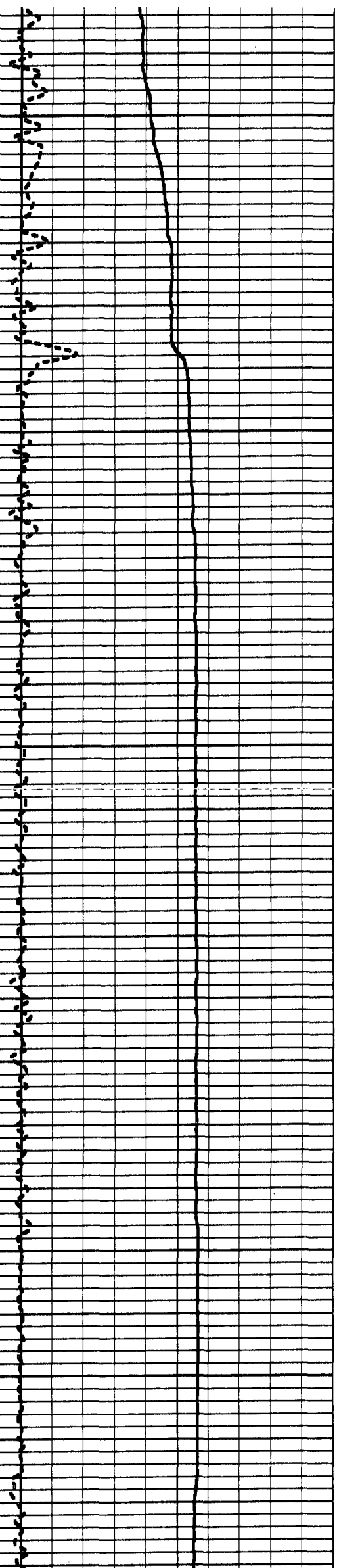
101.2

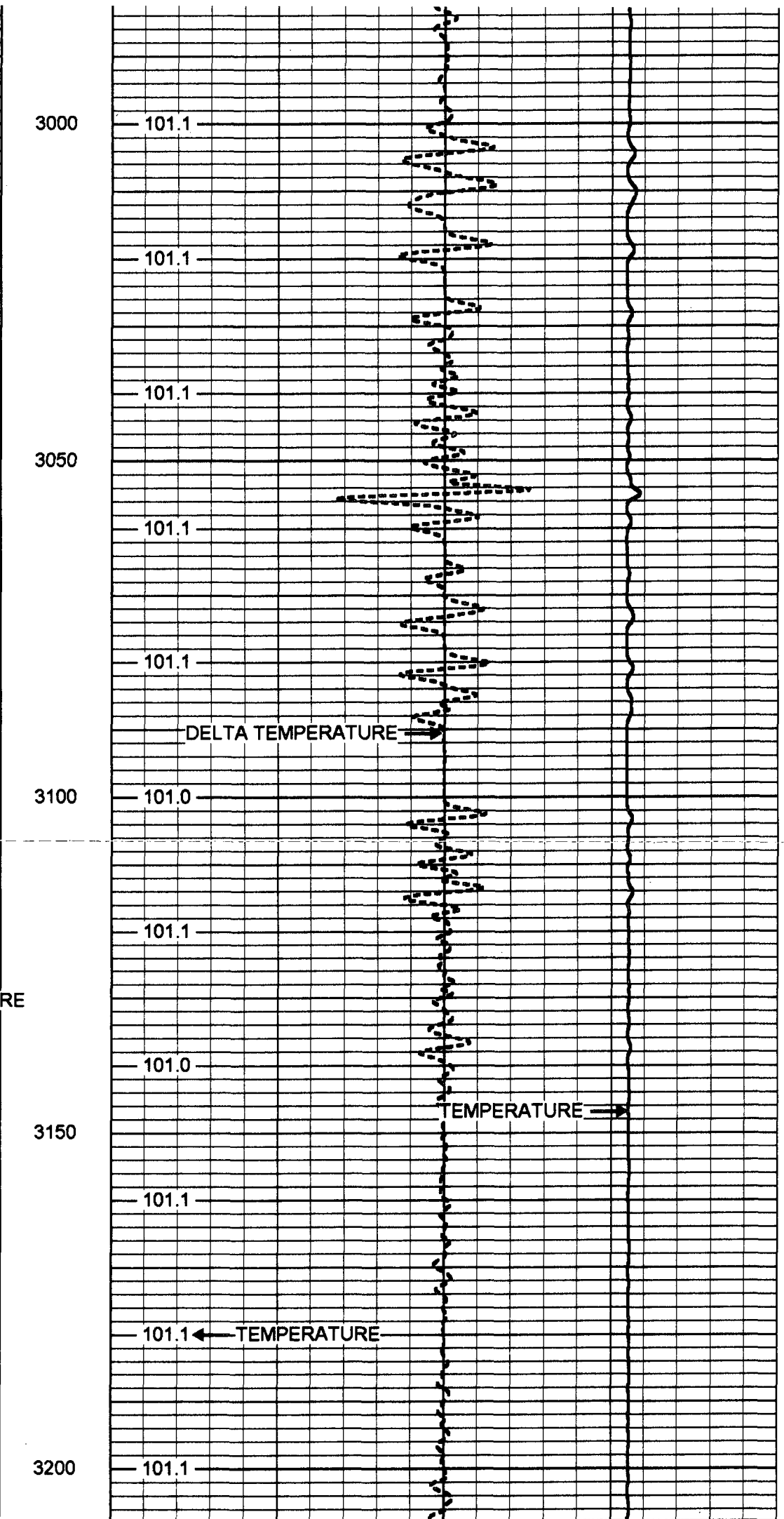
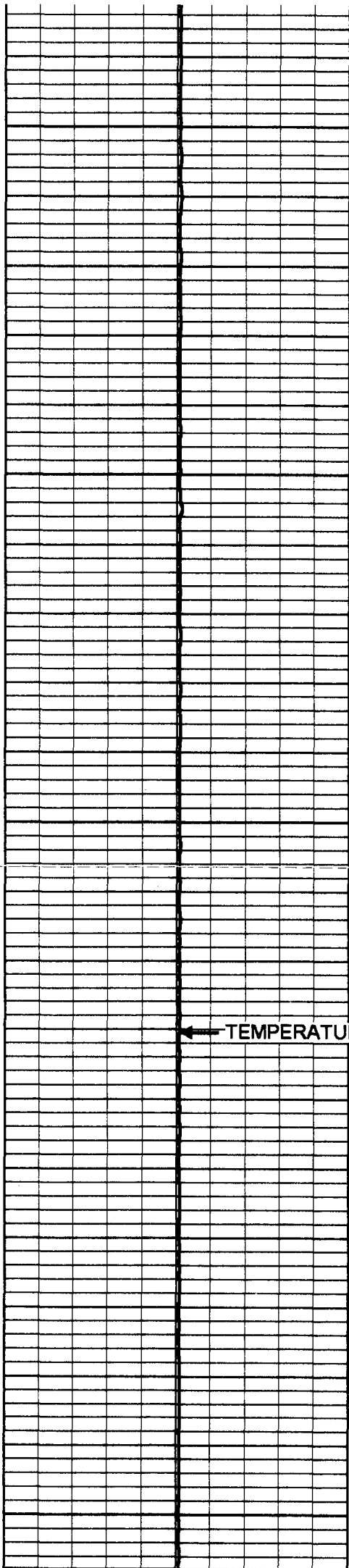
101.2

101.3

101.3

101.1





50 TEMPERATURE (degF) 150

70 TEMPERATURE (degF) 110

-2 DELTA TEMPERATURE (degF) 2

TEMP-RTS (951)
70.00 lb 1.69 in OD 25.50 ft

TEMP 0.10 ft

Dataset:	run1/pass1
Total Length:	25.50 ft
Total Weight:	70.00 lb
O.D.	1.69 in

Temperature Calibration Report

Serial Number:
Tool Model:
Performed:

951
RTS
Wed Feb 28 14:27:36 2001

Point #	Reading		Reference	
1	338.011	cps	34	degF
2	789.31	cps	78	degF
3	1553.28	cps	152	degF