

**FLUID CONDUCTIVITY TEMPERATURE LOG**

Company CH2M HILL  
Well DZMW-1  
Field BONITA SPRINGS W.T.P  
County LEE  
State FLORIDA

Company CH2M HILL  
Well DZMW-1  
Field BONITA SPRINGS W.T.P.  
County LEE  
State FLORIDA

Location  
Permanent Datum PAD  
Log Measured From PAD  
Drilling Measured From PAD

Other Services  
SEE COMMENTS

Elevation  
K.B.  
D.F.  
G.L.

*District - SOUTH DISTRICT*  
MAY 9 9 2004

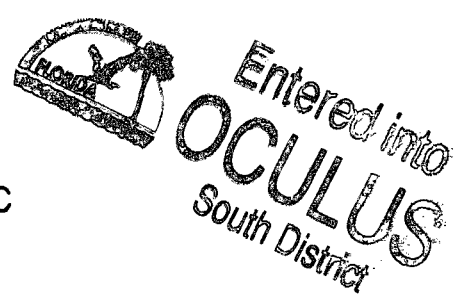
Date	21-MAR-2003		THREE				
Run Number	THREE						
Depth Driller	1250'						
Depth Logger	1250'						
Bottom Logged Interval	1250'						
Top Log Interval	CASING						
Open Hole Size	12.25"						
Type Fluid	WATER						
Density / Viscosity	NA						
Max. Recorded Temp.	NA						
Estimated Cement Top	NA						
Time Well Ready	ON ARRIVAL						
Time Logger on Bottom	1030						
Equipment Number	103						
Location	FT. MYERS						
Recorded By	FERGUSON						
Witnessed By	D. JABLONSKI						
Borehole Record			Tubing Record				
Run Number	Bit	From	To	Size	Weight	From	To
ONE	12.25"	SURFACE	505'				
TWO	34.50"	SURFACE	455'				
THREE	12.25"	CASING	1250'				
Casing Record	Size	Wd/Fl	Top	Bottom			
Surface String	24"	375 W.T.	SURFACE	450'			
Prod. String							
Production String							
Liner							

<<< Fold Here >>>

All interpretations are opinions based on inferences from electrical or other measurements and we cannot and do not guarantee the accuracy or correctness of any interpretation, and we shall not, except in the case of gross or willful negligence on our part, be liable or responsible for any loss, costs, damages, or expenses incurred or sustained by anyone resulting from any interpretation made by any of our officers, agents or employees. These interpretations are also subject to our general terms and conditions set out in our current Price Schedule.

**Comments**

OTHER TOOLS:  
XY-CALIPER  
DUAL INDUCTION  
FLOWMETER  
TEMPERATURE  
BOREHOLE COMPENSATED SONIC  
FLOW RATE = 270 GPM

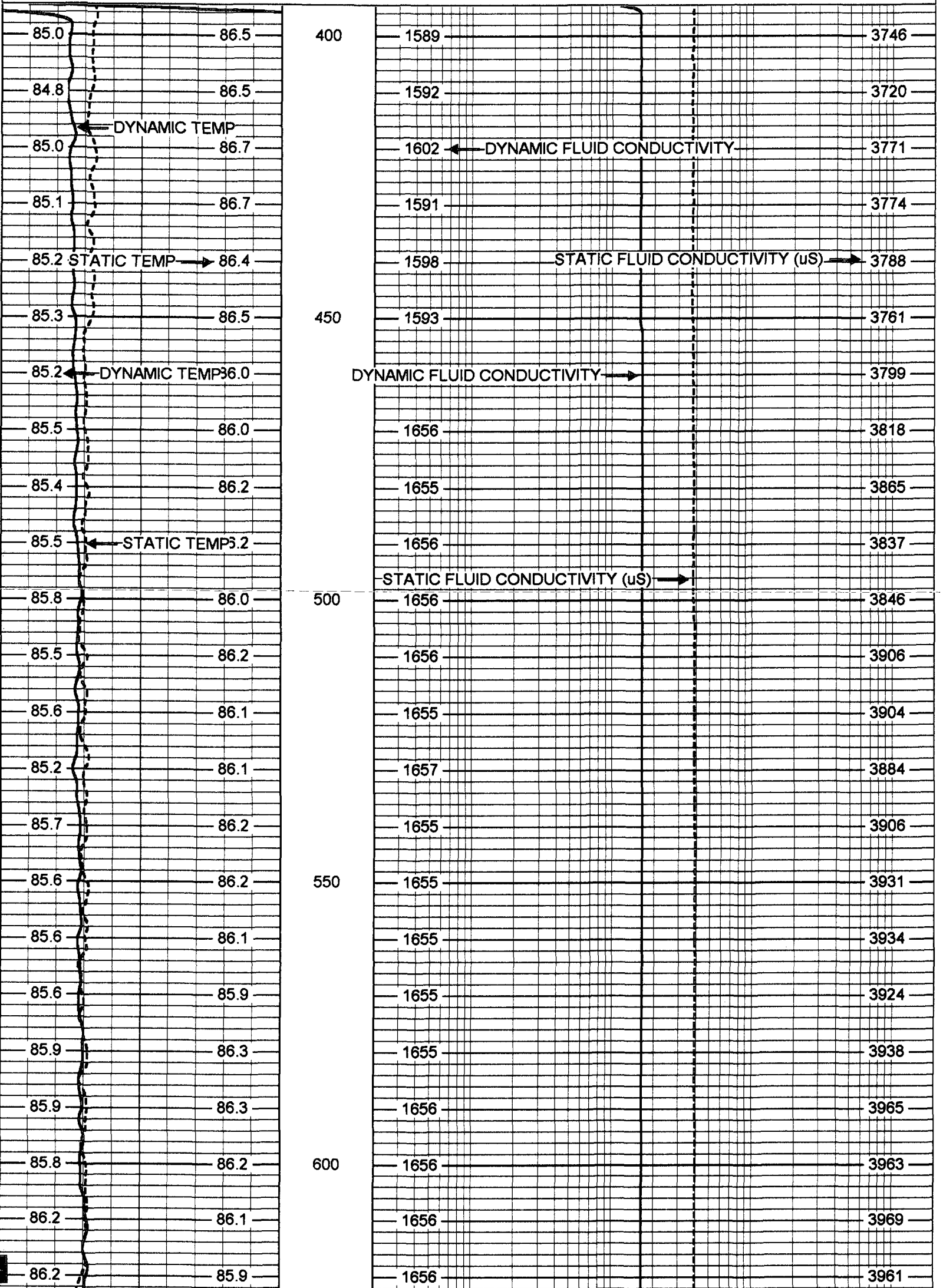


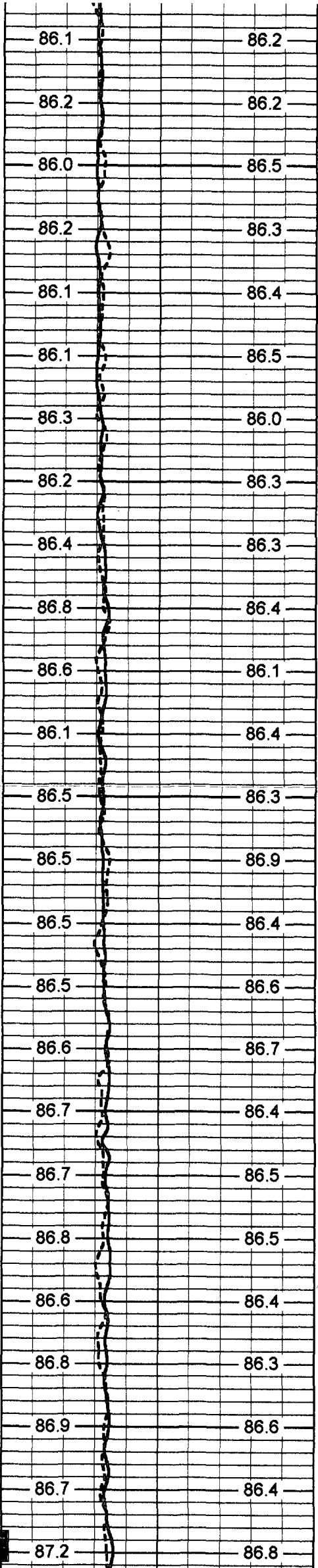
**MERGED FCT**

Charted by: Depth in Feet scaled 1:240

80 DYNAMIC TEMP (degF) 100  
 80 STATIC TEMP (degF) 100

20 DYNAMIC FLUID CONDUCTIVITY (uS) 200000  
 20 STATIC FLUID CONDUCTIVITY (uS) 200000





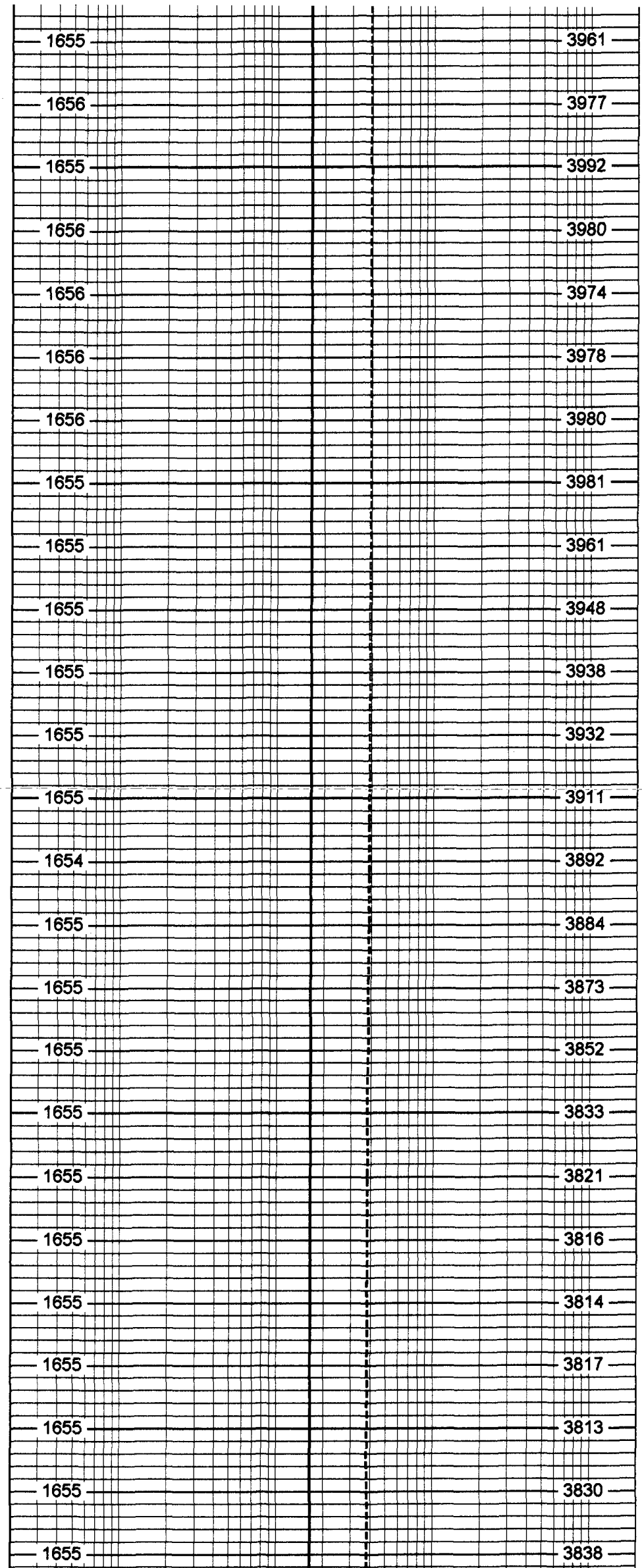
650

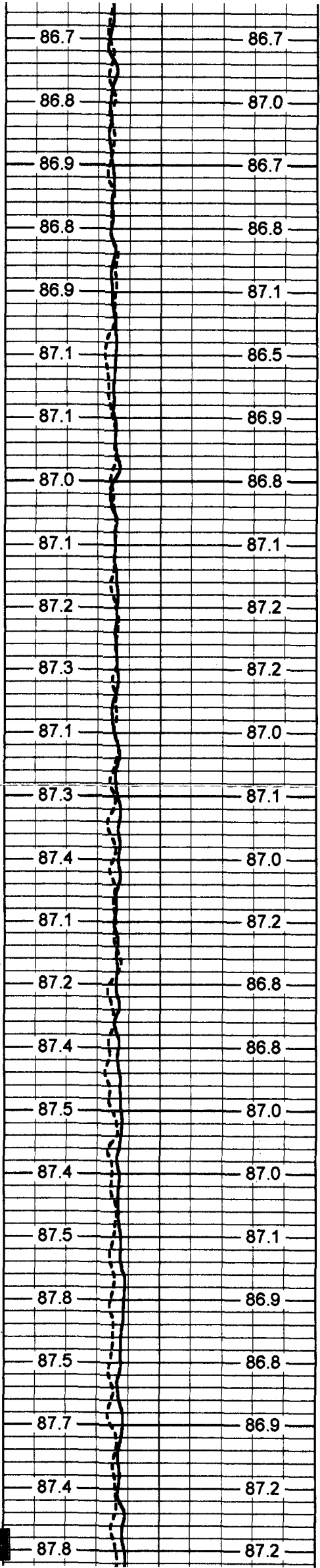
700

750

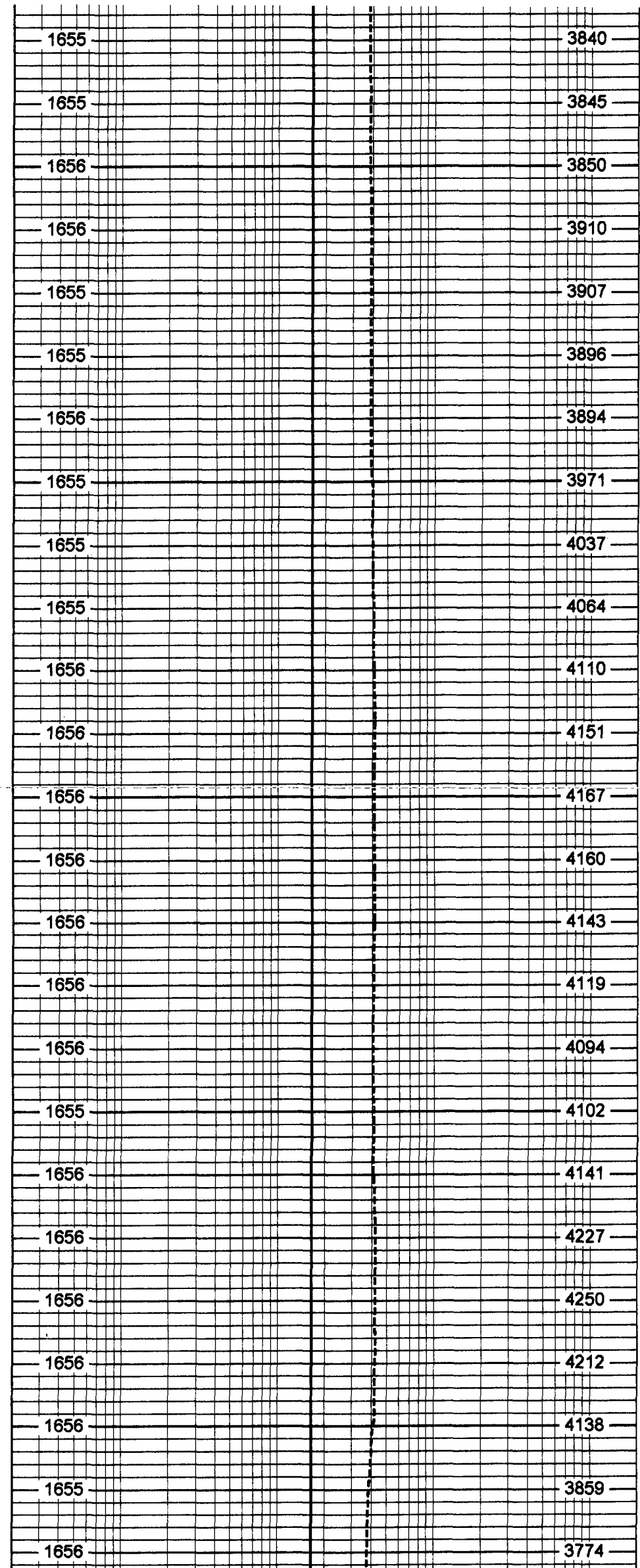
800

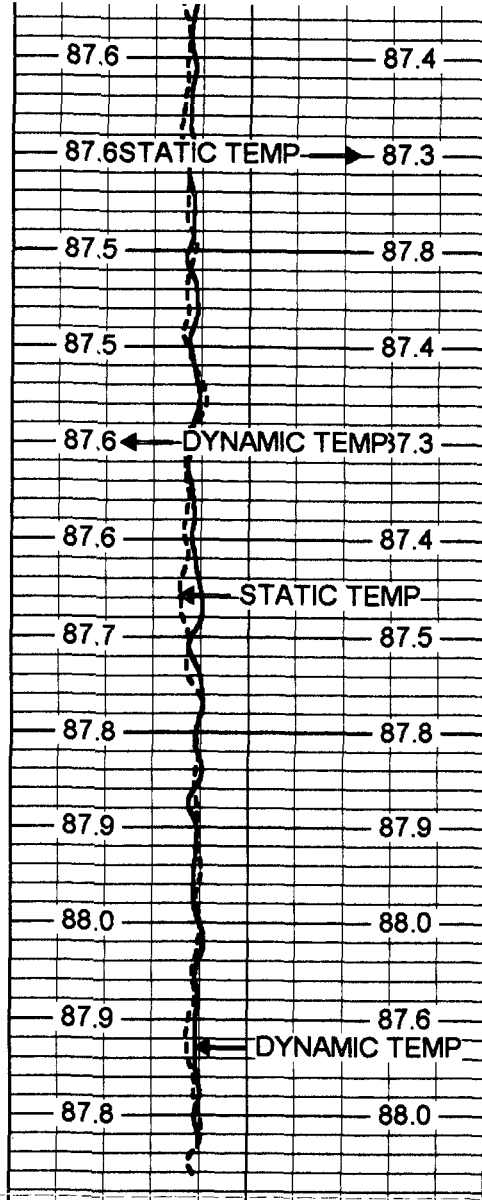
850



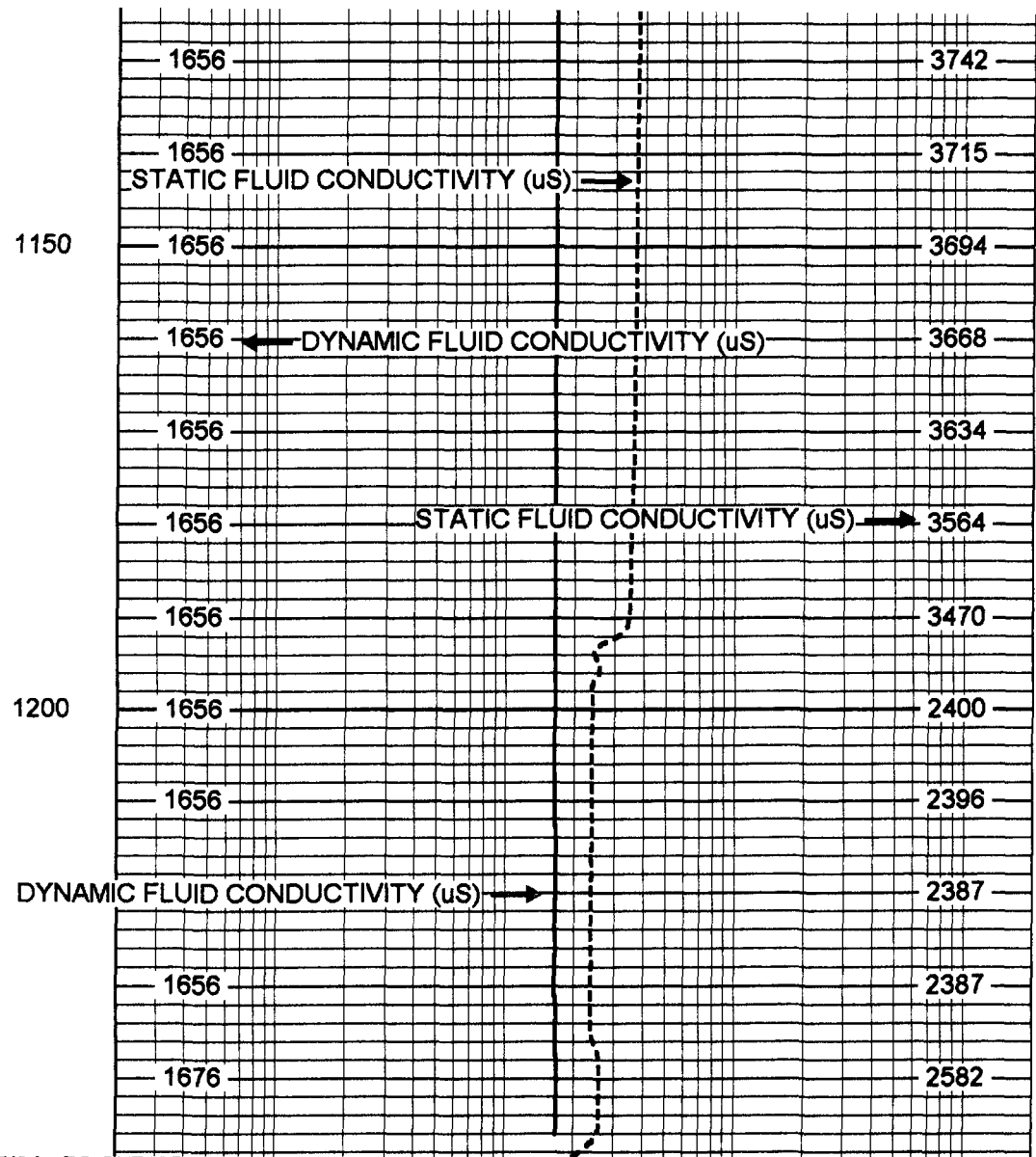


900  
950  
1000  
1050  
1100





80	DYNAMIC TEMP (degF)	100
80	STATIC TEMP (degF)	100



20	DYNAMIC FLUID CONDUCTIVITY (uS)	200000
20	STATIC FLUID CONDUCTIVITY (uS)	200000

FRT Calibration Report			
Serial Number:		30	
Tool Model:		SONDEX	
Performed:		Mon May 07 16:59:04 2001	
Point #	Reading		Reference
1	38.604	cps	1000.000
2	332.194	cps	10000.000
3	1502.090	cps	50000.000
4		cps	
5		cps	
6		cps	

Temperature Calibration Report				
Serial Number:		30		
Tool Model:		SONDEX		
Performed:		Sun Mar 16 01:28:06 2003		
Point #	Reading		Reference	
1	187.965	cps	48	degF
2	601.466	cps	137	degF
3		cps		degF

TEMP 0.70 ft  
FRES 0.50 ft



TEMP-SONDEX (30)  
10.00 lb 1.62 in OD 1.20 ft

FRT-SONDEX (30)  
10.00 lb 1.69 in OD 0.60 ft

Dataset: run3/pass20  
Total Length: 1.80 ft  
Total Weight: 20.00 lb  
O.D. 1.69 in

