



YOUNGQUIST BROTHERS, Inc
GEOPHYSICAL LOGGING DIVISION

FLUID CONDUCTIVITY TEMPERATURE LOG

Company **CH2M HILL**
Well **DZMW-1**
Field **BONITA SPRINGS W.T.P.**
County **LEE** State **FLORIDA**

Location	Permanent Datum	Log Measured From	Drilling Measured From	Elevation	Other Services SEE COMMENTS	Elevation K.B. D.F. G.L.

Date **21-MAR-2003**
Run Number **THREE**
Depth Driller **1250'**
Depth Logger **1250'**
Bottom Logged Interval **CASING**
Top Log Interval **1250'**
Open Hole Size **12.25"**
Type Fluid **WATER**
Density / Viscosity **NA**
Max. Recorded Temp. **NA**
Estimated Cement Top **NA**
Time Well Ready **ON ARRIVAL**
Time Logger on Bottom **1030**
Equipment Number **103**
Location **FT. MYERS**
Recorded By **FERGUSON**
Witnessed By **D. JABLONSKI**

Borehole Record		Tubing Record					
Run Number	Bit	From	To	Size	Weight	From	To
ONE	12.25"	SURFACE	505'				
TWO	34.50"	SURFACE	455'				
THREE	12.25"	CASING	1250'				

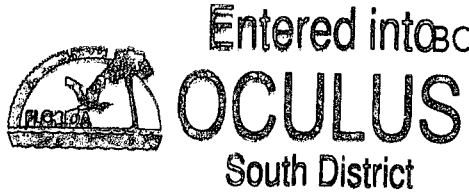
Casing Record
Surface String **24"** **Wd/Ft 375 W.T.**
Prot. String
Production String
Liner

<<< Fold here >>>

All interpretations are opinions based on inferences from electrical or other measurements and we cannot and do not guarantee the accuracy or correctness of any interpretation, and we shall not, except in the case of gross or willful negligence on our part, be liable or responsible for any loss, costs, damages, or expenses incurred or sustained by anyone resulting from any interpretation made by any of our officers, agents or employees. These interpretations are also subject to our general terms and conditions set out in our current Price Schedule.

Comments

OTHER TOOLS:
XY-CALIPER
DUAL INDUCTION
FLOWMETER
TEMPERATURE



FLOW RATE = 270 GPM

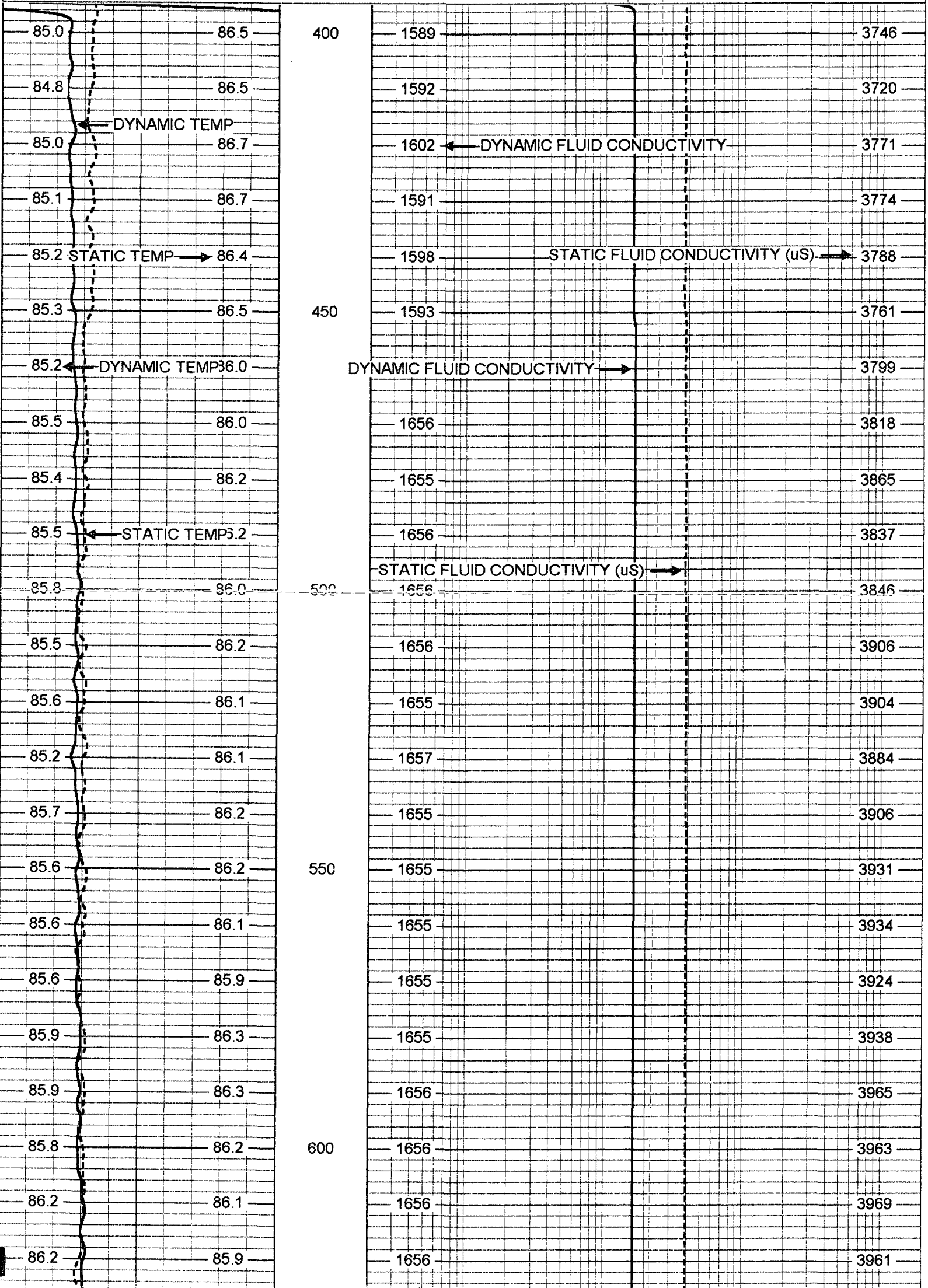
YOUNGQUIST BROTHERS, Inc
GEOPHYSICAL LOGGING DIVISION

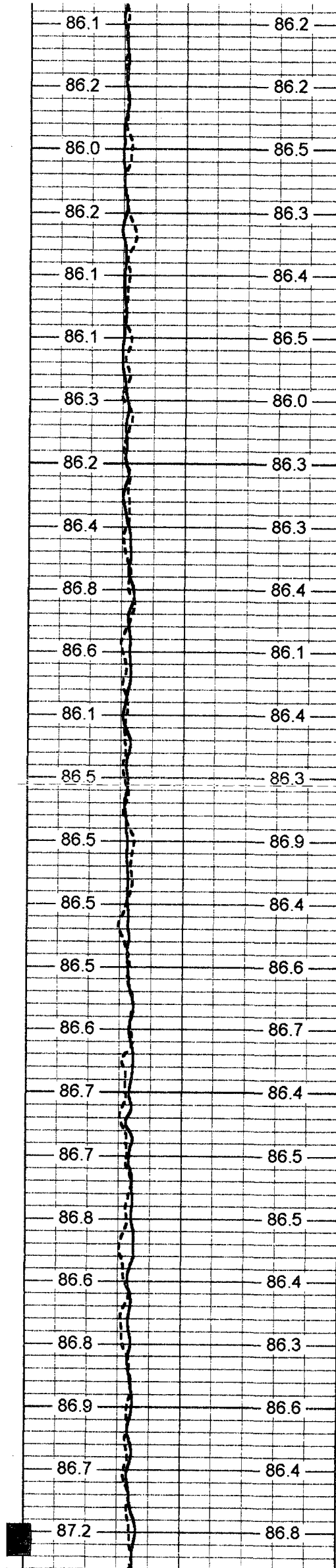
MERGED FCT

Database File: **bsmw1.db**
Dataset Pathname: **run3/pass20**
Presentation Format: **frt_mg**
Dataset Creation: **Sat Mar 22 01:06:25 2003 by Log 6.2 B4**

80	DYNAMIC TEMP (degF)	100
80	STATIC TEMP (degF)	100

20	DYNAMIC FLUID CONDUCTIVITY (uS)	200000
20	STATIC FLUID CONDUCTIVITY (uS)	200000





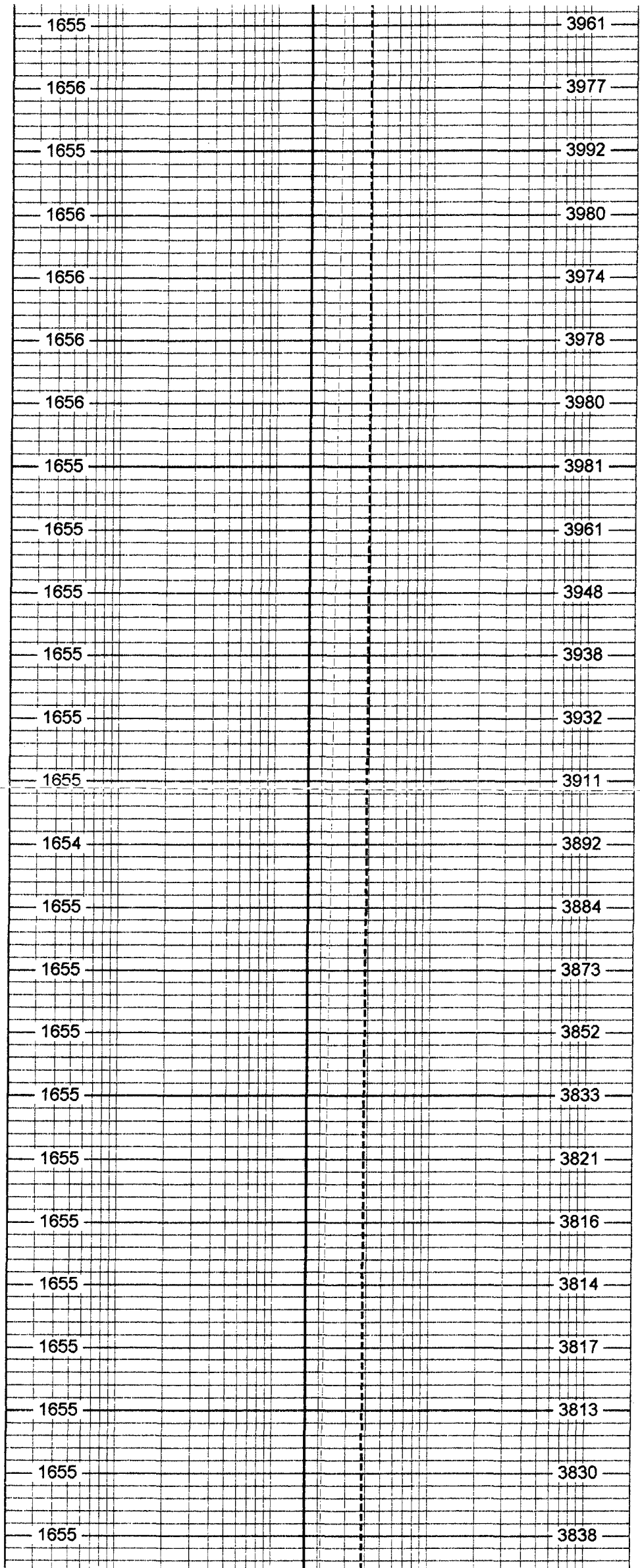
650

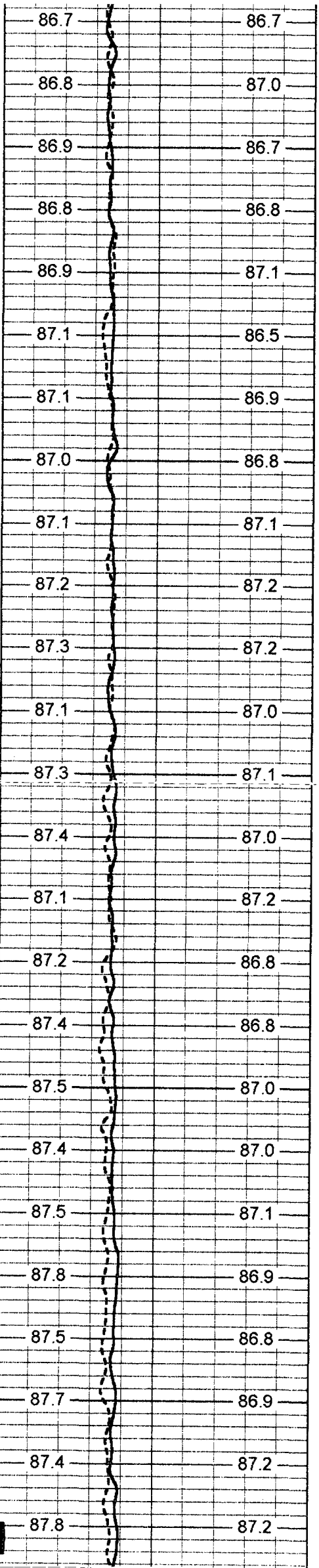
700

750

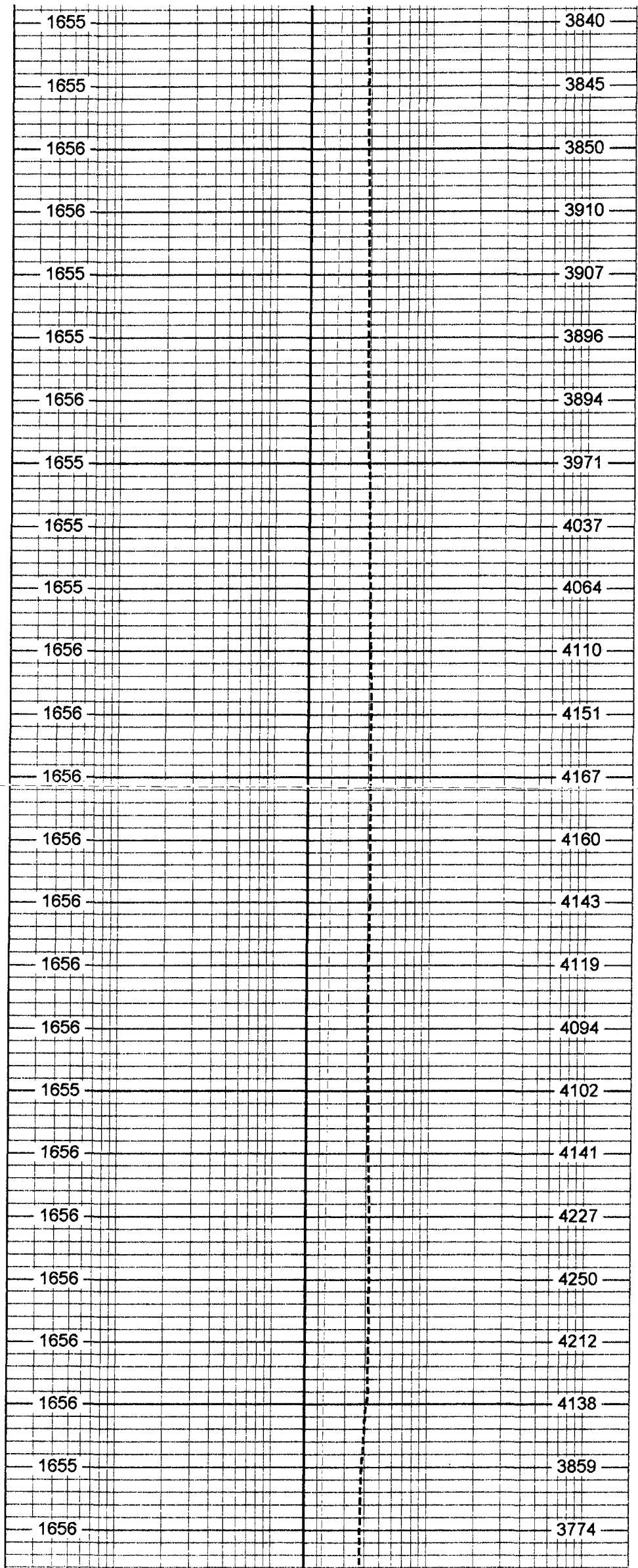
800

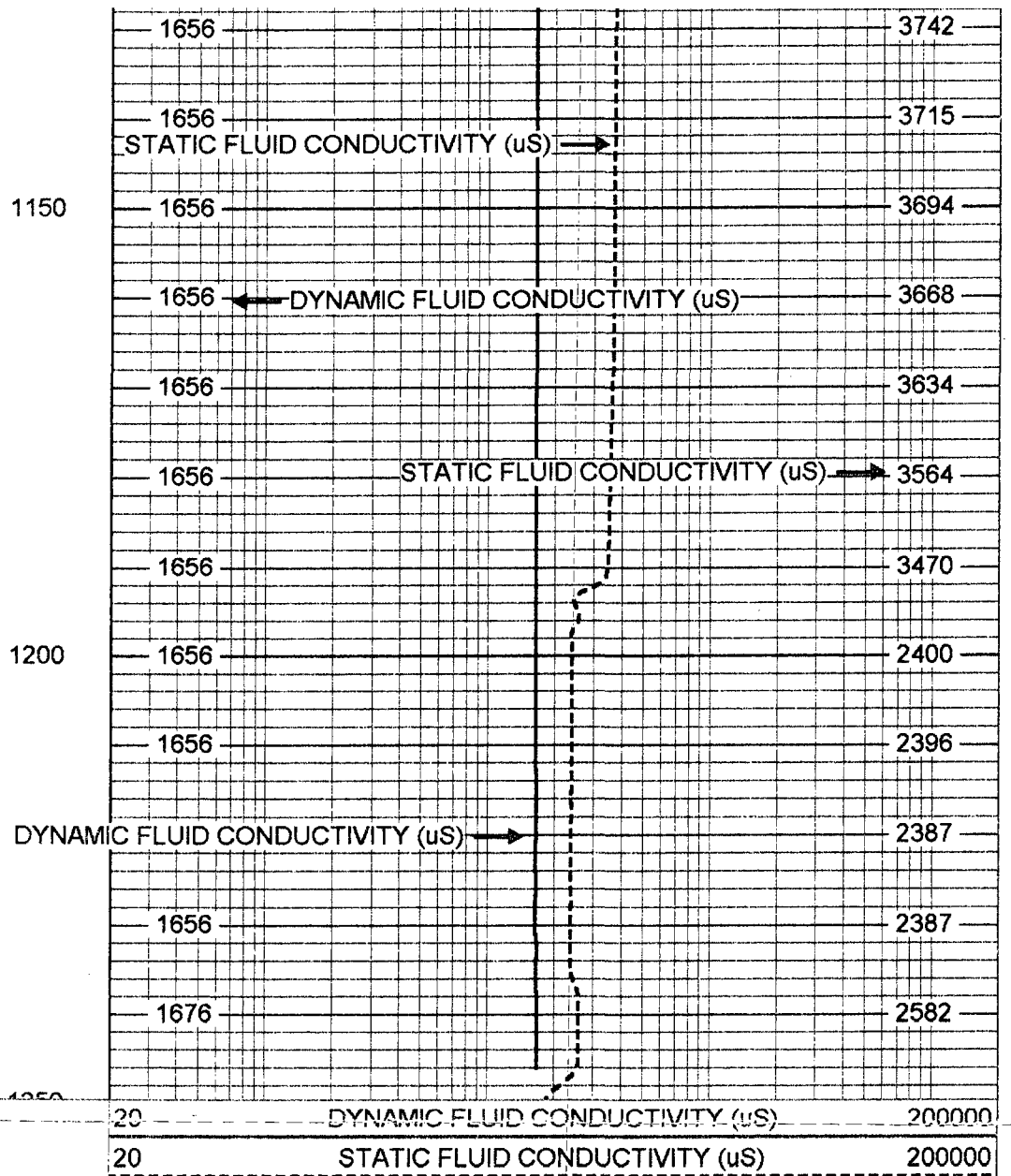
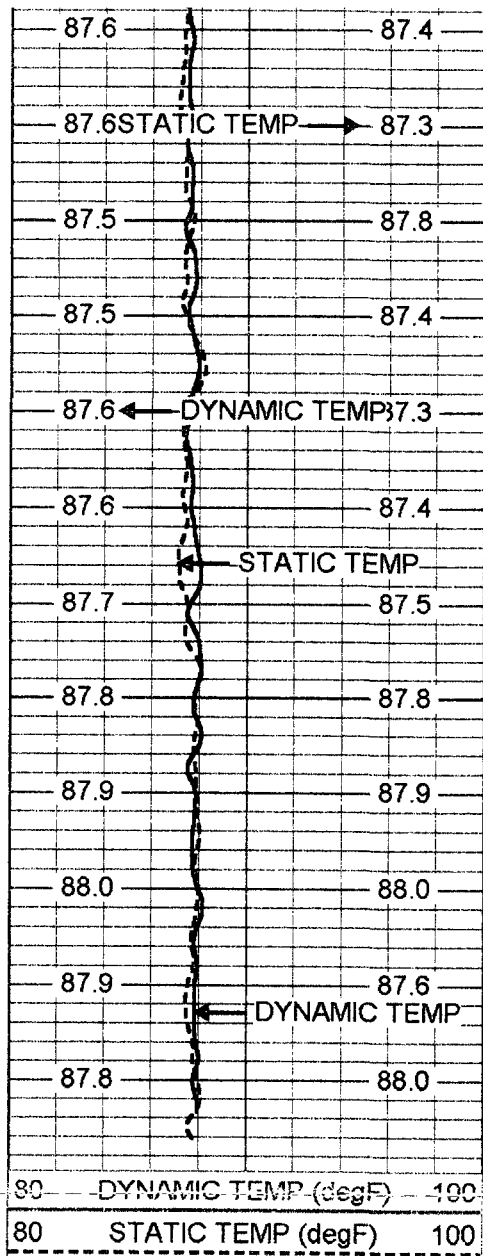
850





900
950
1000
1050
1100





FRT Calibration Report

Serial Number:	30	
Tool Model:	SONDEX	
Performed:	Mon May 07 16:59:04 2001	

Point #	Reading		Reference
1	38.604	cps	1000.000
2	332.194	cps	10000.000
3	1502.090	cps	50000.000
4		cps	
5		cps	
6		cps	

Temperature Calibration Report

Serial Number:	30	
Tool Model:	SONDEX	
Performed:	Sun Mar 16 01:28:06 2003	

Point #	Reading		Reference	
1	187.965	cps	48	degF
2	601.466	cps	137	degF
3		cps		degF

TEMP 0.70 ft
FRES 0.50 ft



TEMP-SONDEX (30)
10.00 lb 1.62 in OD 1.20 ft

FRT-SONDEX (30)
10.00 lb 1.69 in OD 0.60 ft

Dataset: run3/pass20
Total Length: 1.80 ft
Total Weight: 20.00 lb
O.D. 1.69 in