



HIGH RESOLUTION
TEMPERATURE /
GAMMA RAY

Company Diversified Drilling Corp.
Well ASR No. 3
Field Punta Gorda
County Charlotte
State/Prv Florida

Company Diversified Drilling Corporation
Well ASR No. 3
Field Punta Gorda
County Charlotte
State/Prv Florida

Location
City of Punta Gorda
Water Treatment Plant

Location

Other Services

NONE

Permanent Datum
Log Measured From
Drilling Measured From

G.L.
G.L.
G.L.

Elevation

K.B.
D.F.
G.L.

Date

19-DEC-2001

Run Number

FIVE

Depth Driller

804'

Depth Logger

Cement Plug=792'

Bottom Logged Interval

792'

Top Log Interval

SURFACE

Open Hole Size

25"

Type Fluid

WATER

Density / Viscosity

NAANA

Max. Recorded Temp.

131.5 degF

Estimated Cement Top

5'

Time Well Ready

11:15 12/19/01

Time Logger on Bottom

11:15 12/19/01

Equipment Number

MVGS-1

Location

Ft. Myers

Recorded By

S. Miller

Witnessed By

P. D'Arno (MWH)

Recorded By

B Kohlmeier (DDC)

Witnessed By

C Godwin (DDC)

Run Number

ONE

Run Number

TWO

Run Number

THREE

Bit

7.625"

From

120'

To

351'

Size

32"

Wdr/Ft

0.375" WT

Prot. String

26"

0.375" WT

Production String

17.4" PVC

15.25" ID

Liner

2001214

P.O. #. 13339

Job No.: 6022

* FINAL PRINT *

<<< Fold Here >>>

All interpretations are opinions based on inferences from electrical or other measurements and we cannot and do not guarantee the accuracy or correctness of any interpretation, and we shall not, except in the case of gross or willful negligence on our part, be liable or responsible for any loss, costs, damages, or expenses incurred or sustained by anyone resulting from any interpretation made by any of our officers, agents or employees. These interpretations are also subject to our general terms and conditions set out in our current Price Schedule.

Comments

Cement Plug at 792'

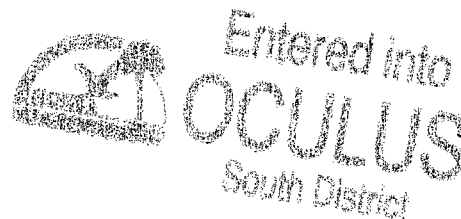
TEMPERATURE CALIBRATION

(Performed: 15:35, 11/30/01)

Reference (degF) Reading (CPS)

39.1 150.426

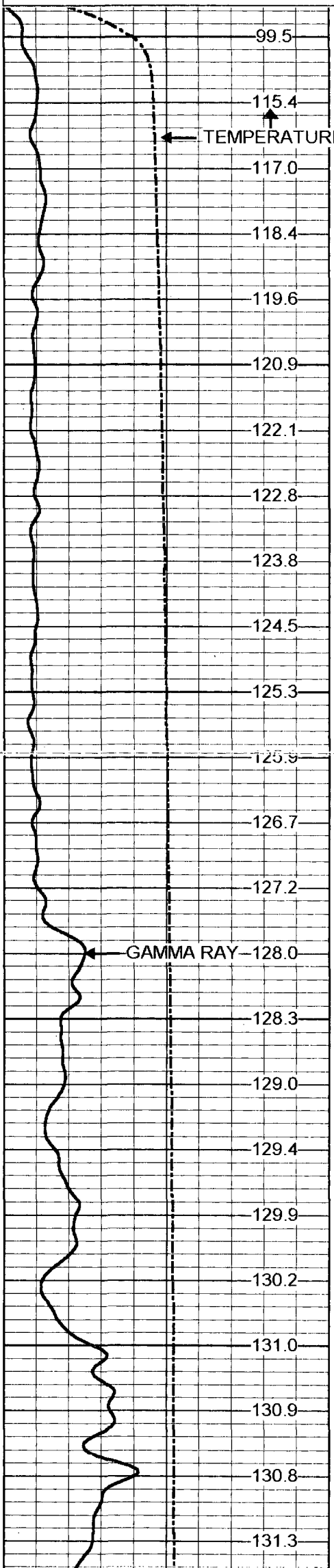
155.5 2735.35



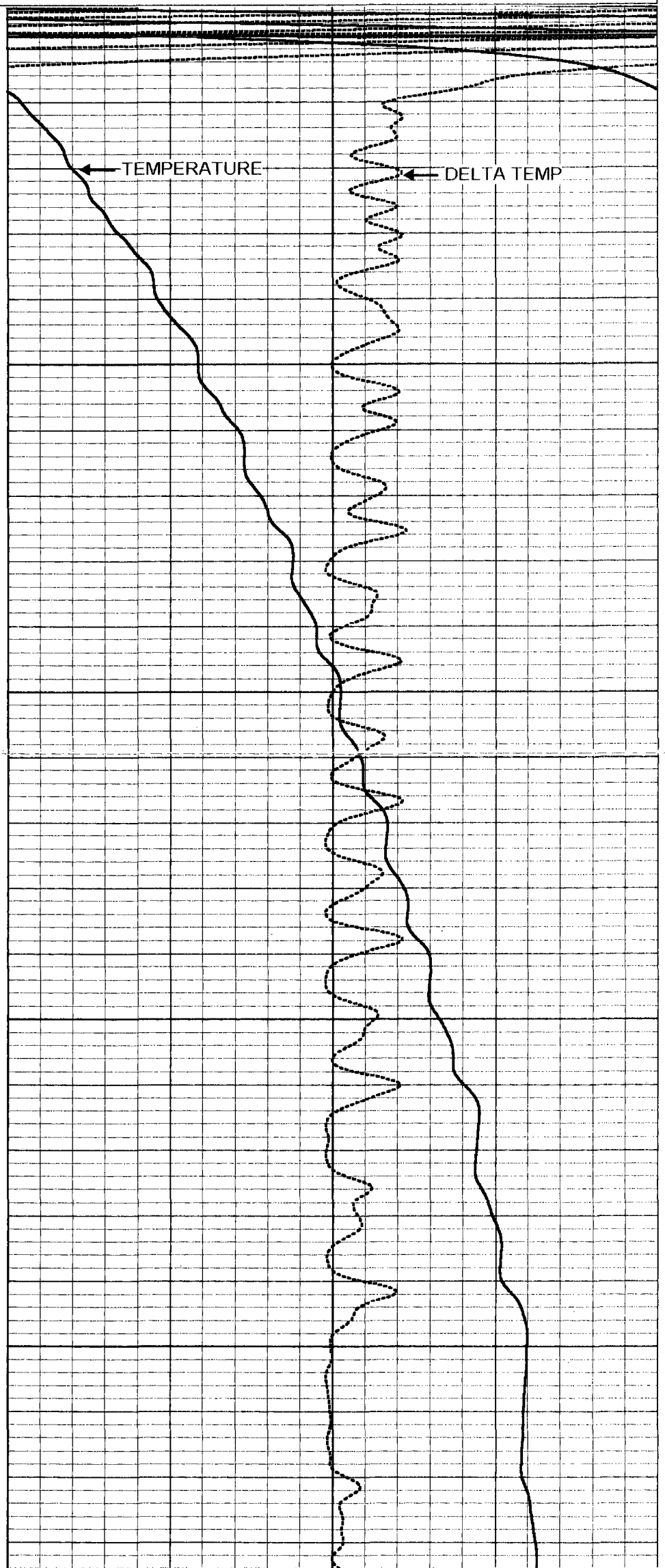
Stage 3&4 Temperature Profile

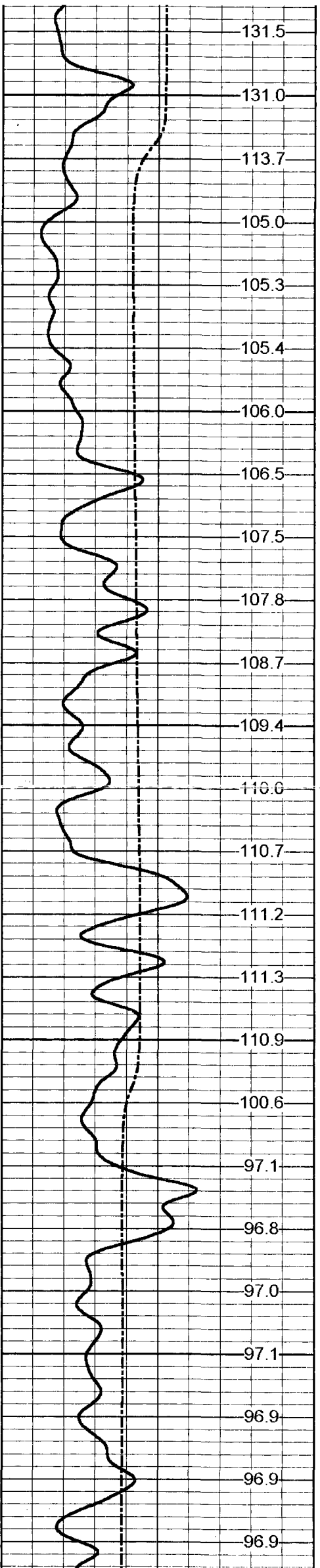
Database File: pgasr-3.db
Dataset Pathname: run4/pass4
Presentation Format: ct1pg2.prs
Dataset Creation: Wed Dec 19 11:23:03 2001 by Log VER_5.3
Charted by: Depth in Feet scaled 1:240

0 TEMP (degF) 250
0 GAMMA RAY (GAPI) 100



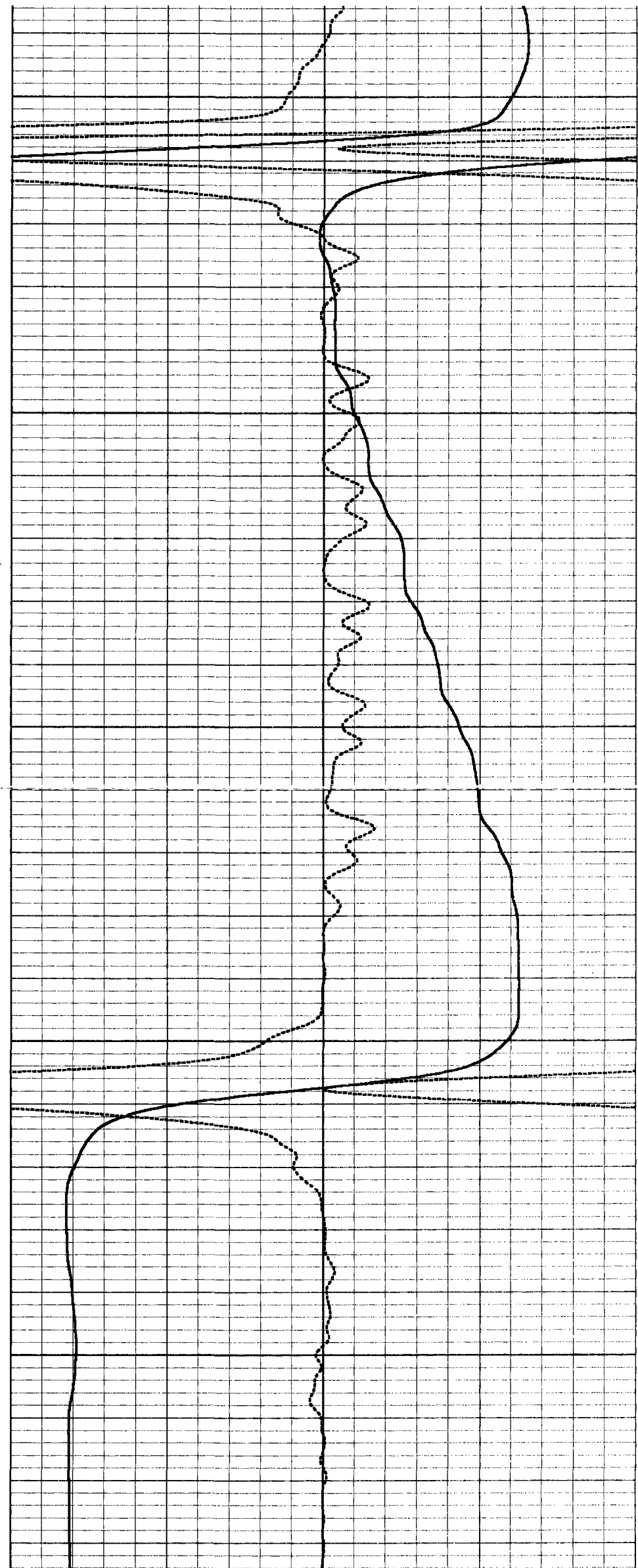
75 TEMPERATURE (degF) 95
-1 DELTA TEMP (degF) 1

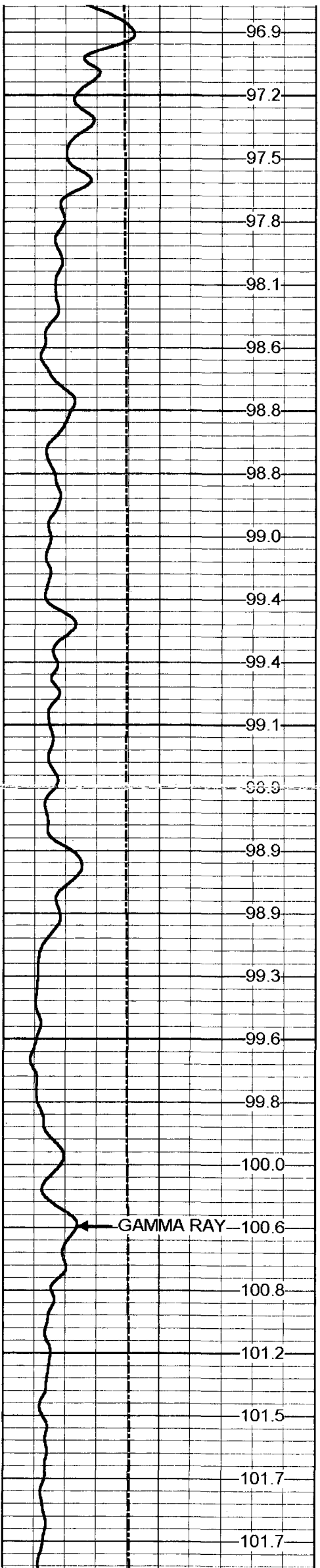




300

400

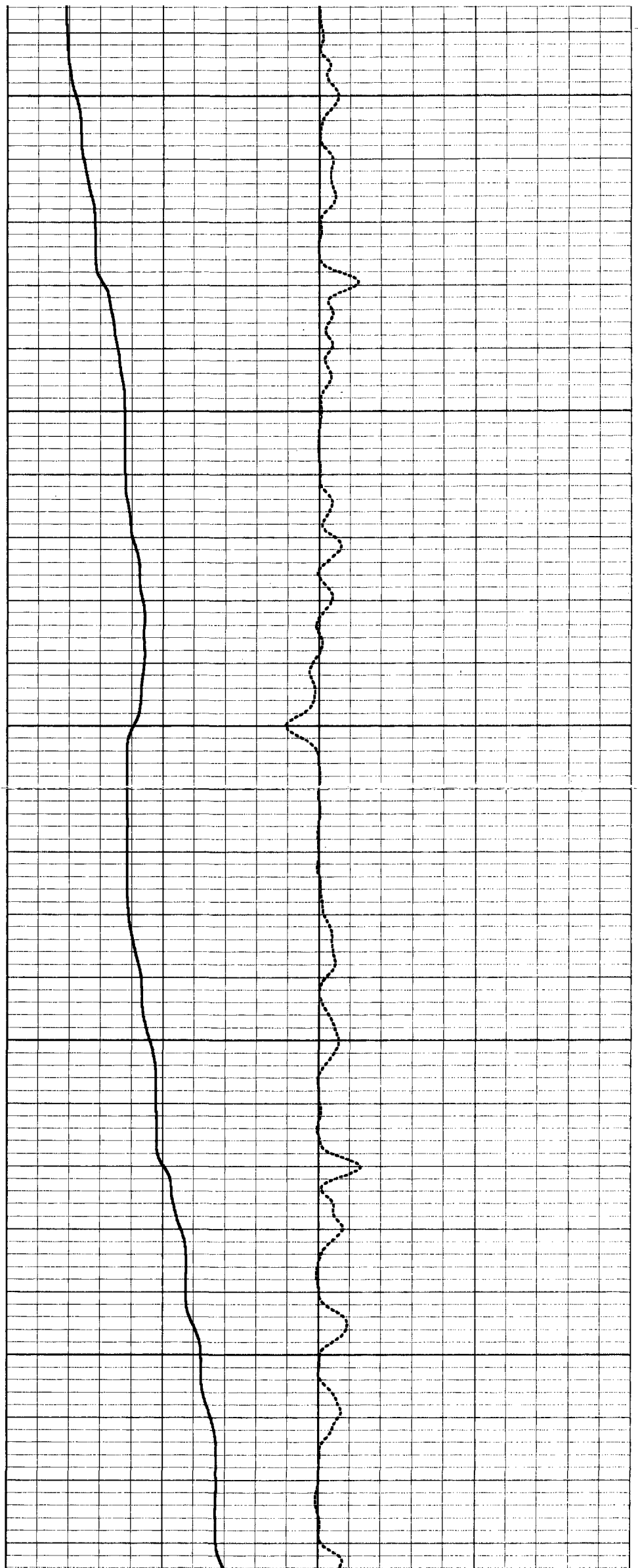


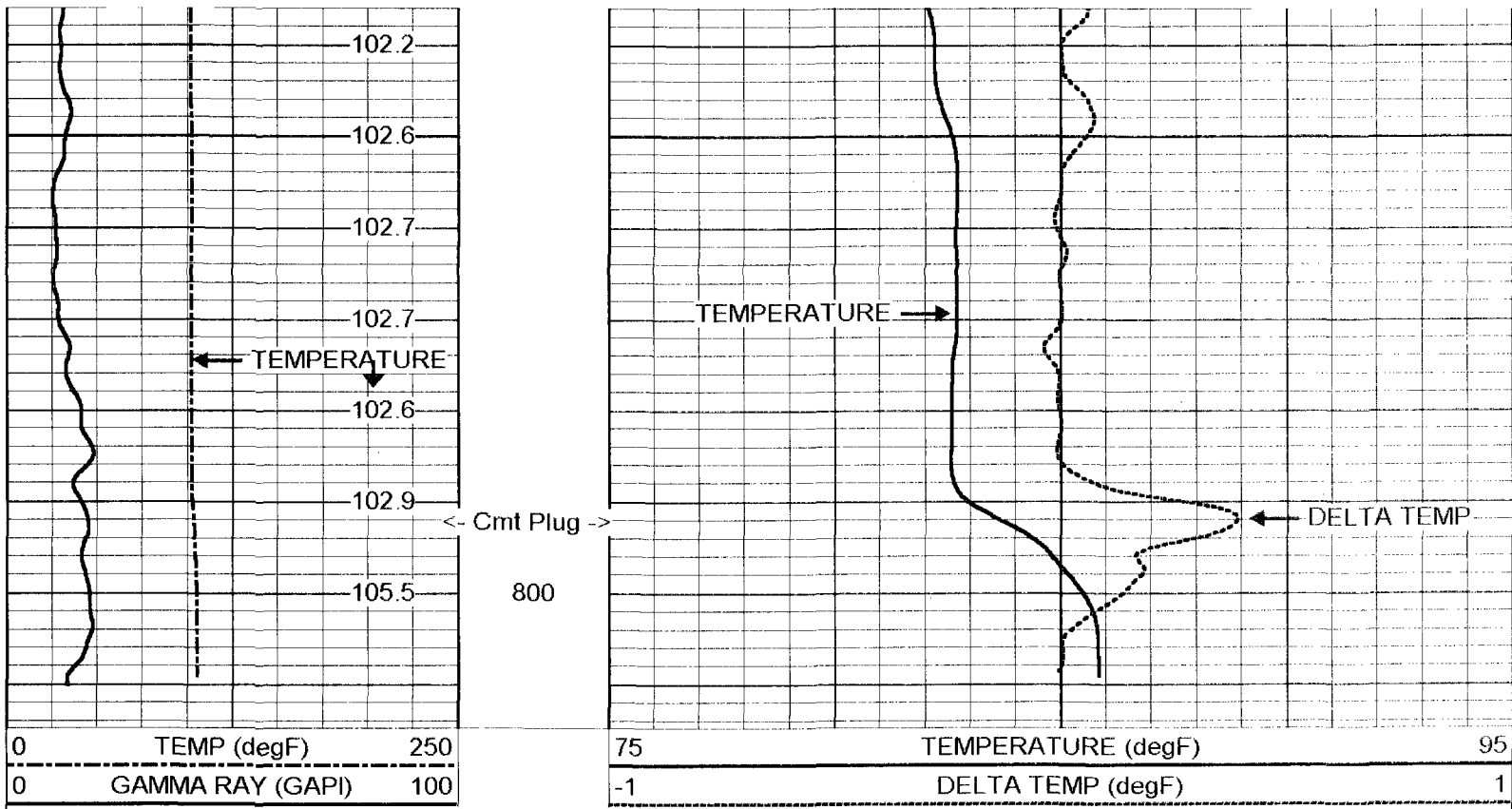


500

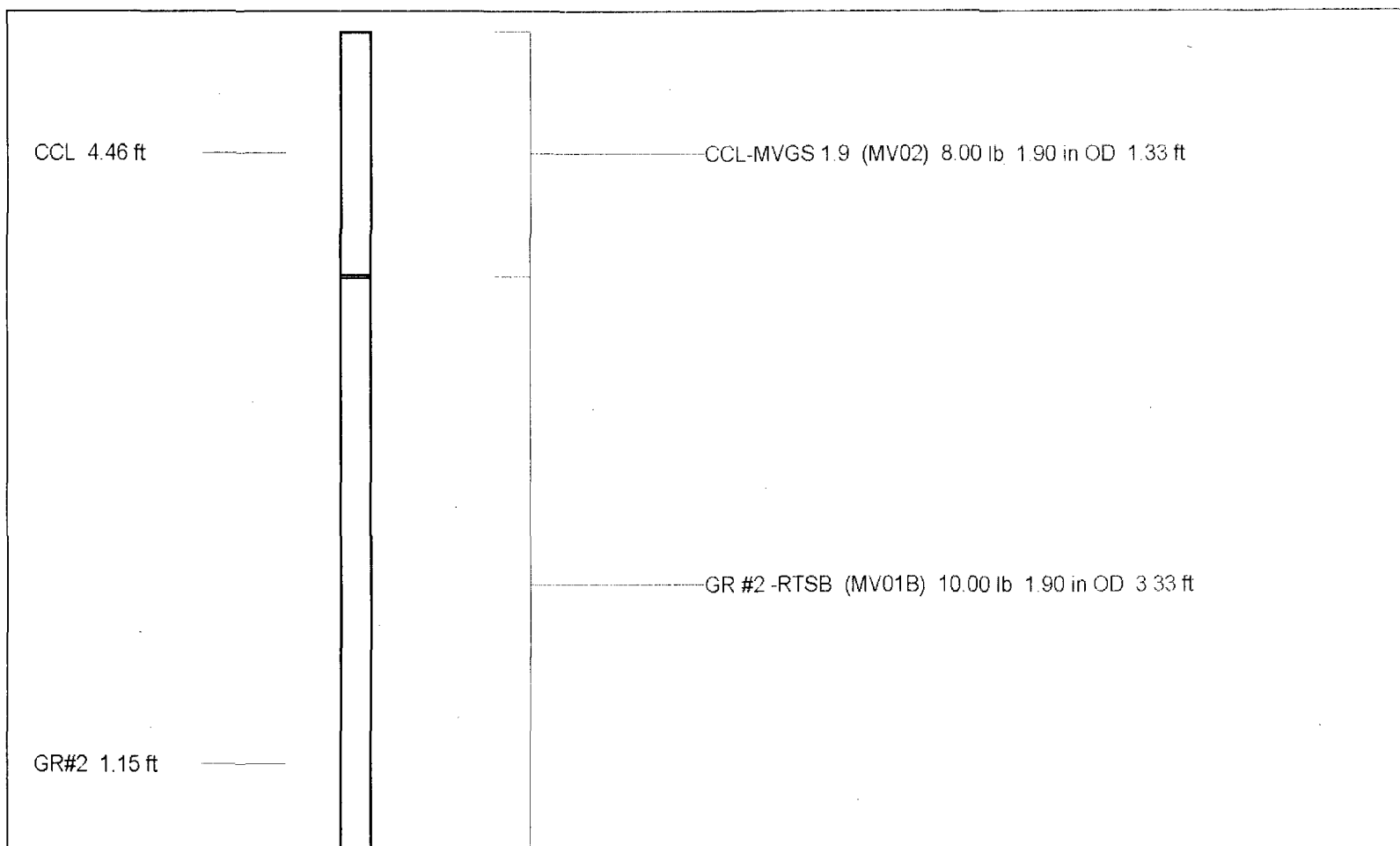
600

700

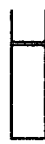




Gamma Ray Calibration Report		
Serial Number:	MV01B	
Tool Model:	RTSB	
Performed:	Tue Nov 13 07:15:17 2001	
Calibrator Value:	120	GAPI
Background Reading:	5.55556	cps
Calibrator Reading:	134.922	cps
Sensitivity:	0.927596	GAPI/cps



TEMP 0.10 ft



TEMP-RTS (MV02) 2.00 lb 1.90 in OD 0.46 ft

Dataset:	run4/pass4
Total Length:	5.12 ft
Total Weight:	20.00 lb
O.D.	1.90 in