



**HIGH RESOLUTION  
TEMPERATURE /  
GAMMA RAY**

Company		Diversified Drilling Corporation	
Well		ASR No. 3	
Field		Punta Gorda	
County		Charlotte	
State/Prv		Florida	
Location		City of Punta Gorda Water Treatment Plant	
Other Services		NONE	
Permanent Datum	G.L.	Elevation	K.B.
Log Measured From	G.L.		D.F.
Drilling Measured From	G.L.		G.L.
Date	19-DEC-2001		
Run Number	FIVE		
Depth Driller	804'		
Depth Logger	Cement Plug=792'		
Bottom Logged Interval	792'		
Top Log Interval	SURFACE		
Open Hole Size	25"		
Type Fluid	WATER		
Density / Viscosity	NANA		
Max. Recorded Temp.	131.5 degF		
Estimated Cement Top	5'		
Time Well Ready	11:15 12/19/01		
Time Logger on Bottom	11:15 12/19/01		
Equipment Number	MVG-S-1		
Location	Ft. Myers		
Recorded By	S. Miller		
Witnessed By	P. D'Arno (MWH)	B. Kohlmeier (DDC)	C. Godwin (DDC)
Borehole Record		Tubing Record	
Run Number	Bit	From	To
ONE	7.625"	120'	351'
TWO	7.875"	350'	810'
THREE	25"	350'	815'
Casing Record	Size	Wdth/Ft	Top
Surface String	32"	0.375" WT	SURFACE
Prod. String	26"	0.375" WT	SURFACE
Production String	17.4" PVC	15.25" ID	SURFACE
Liner			Bottom
Invoice No.	2001214	P.O. #.	Job No.: 6022
			* FIELD PRINT *

<<< Fold Here >>>

All interpretations are opinions based on inferences from electrical or other measurements and we cannot and do not guarantee the accuracy or correctness of any interpretation, and we shall not, except in the case of gross or willful negligence on our part, be liable or responsible for any loss, costs, damages, or expenses incurred or sustained by anyone resulting from any interpretation made by any of our officers, agents or employees. These interpretations are also subject to our general terms and conditions set out in our current Price Schedule.

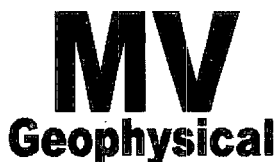
**Comments**

Cement Plug at 792'

**TEMPERATURE CALIBRATION**

(Performed: 15:35, 11/30/01)

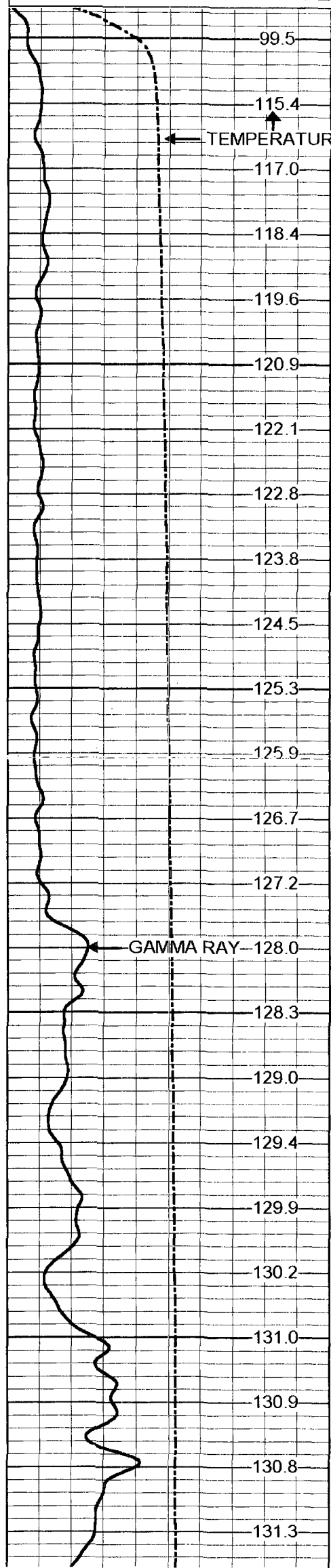
Reference (degF)	Reading (CPS)
39.1	150.426
155.5	2735.35



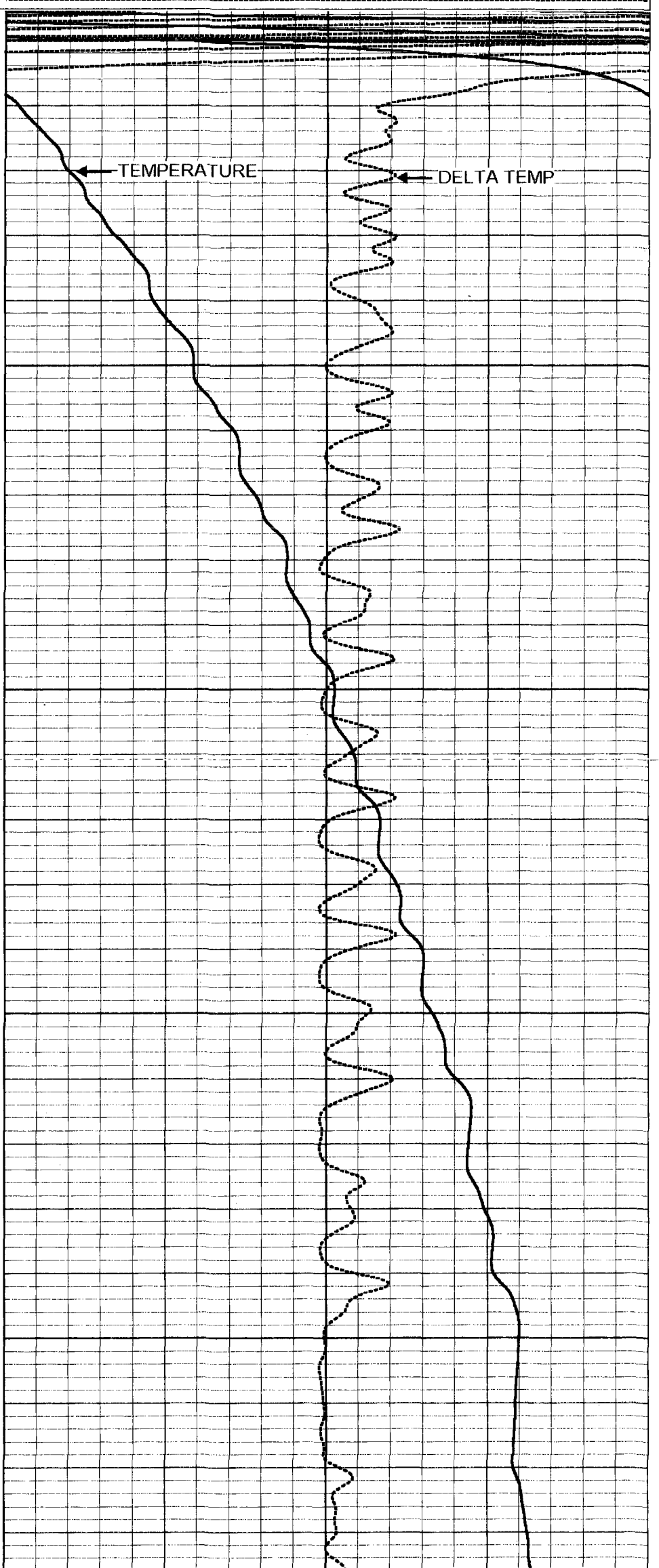
**Stage 3&4 Temperature Profile**

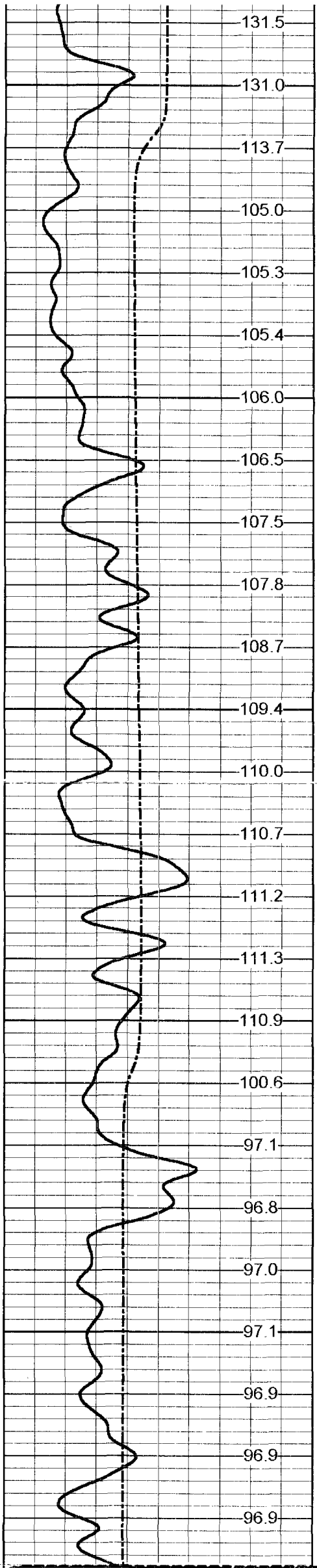
Database File: pgasr-3.db  
 Dataset Pathname: run4/pass4  
 Presentation Format: ctllpg2.prs  
 Dataset Creation: Wed Dec 19 11:23:03 2001 by Log VER\_5.3  
 Charted by: Depth in Feet scaled 1:240

0 TEMP (degF) 75  
0 GAMMA RAY (GAPI) 100



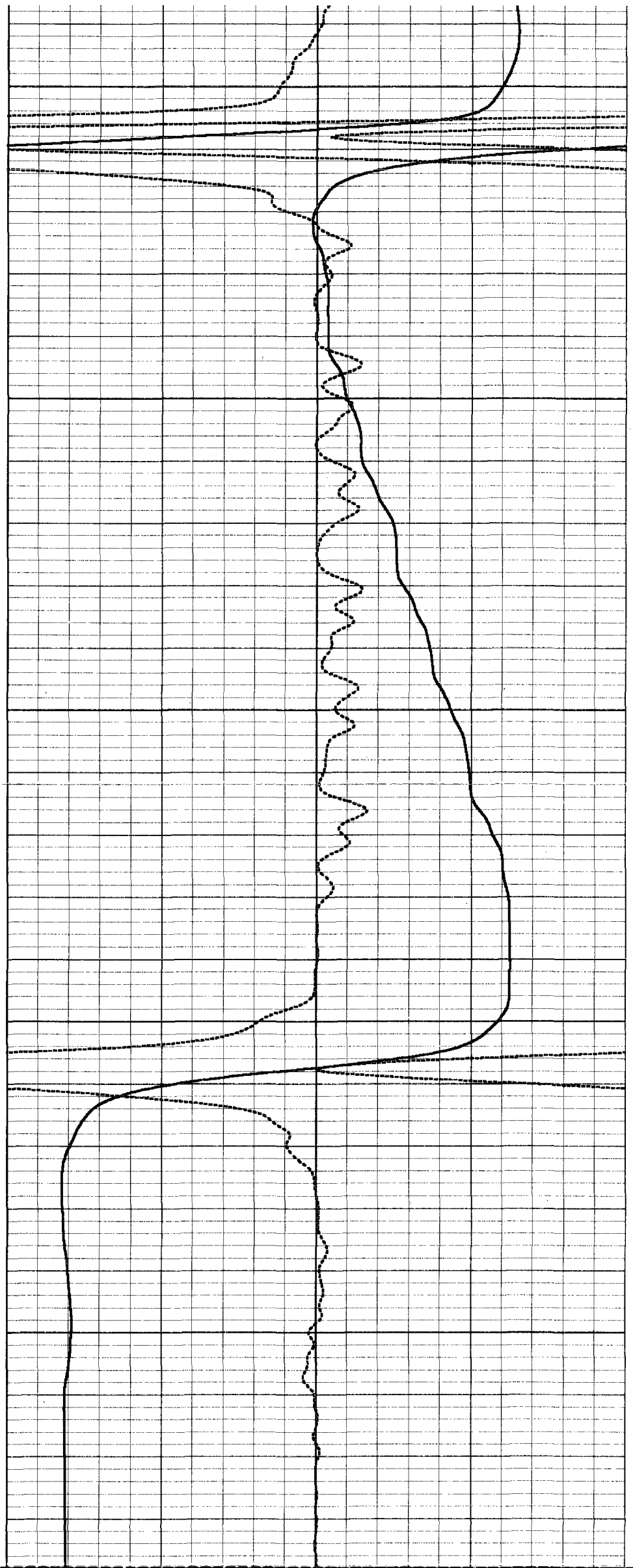
75 TEMPERATURE (degF) 95  
-1 DELTA TEMP (degF) 1

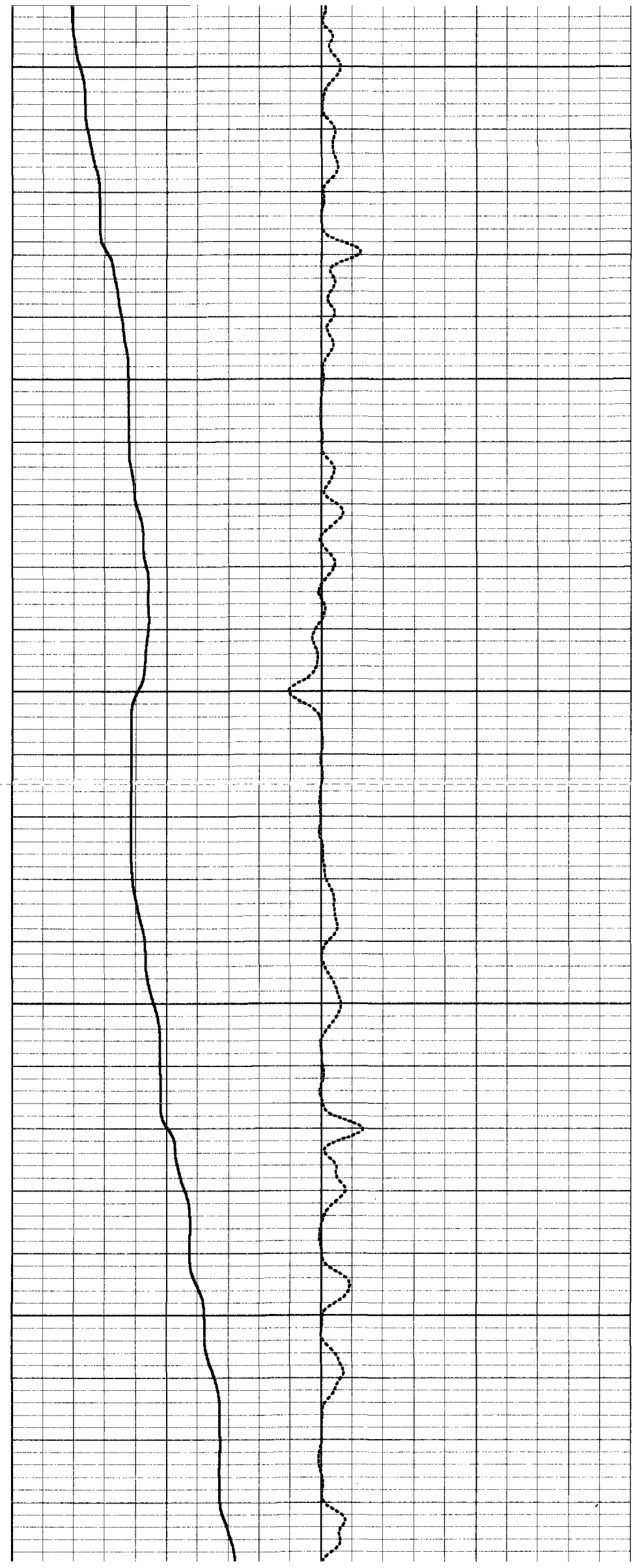
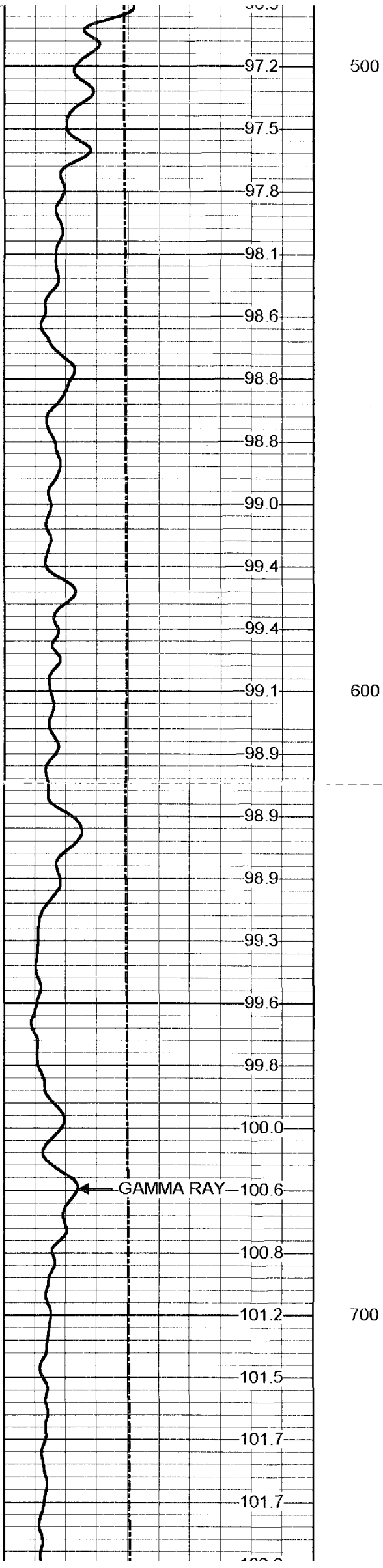


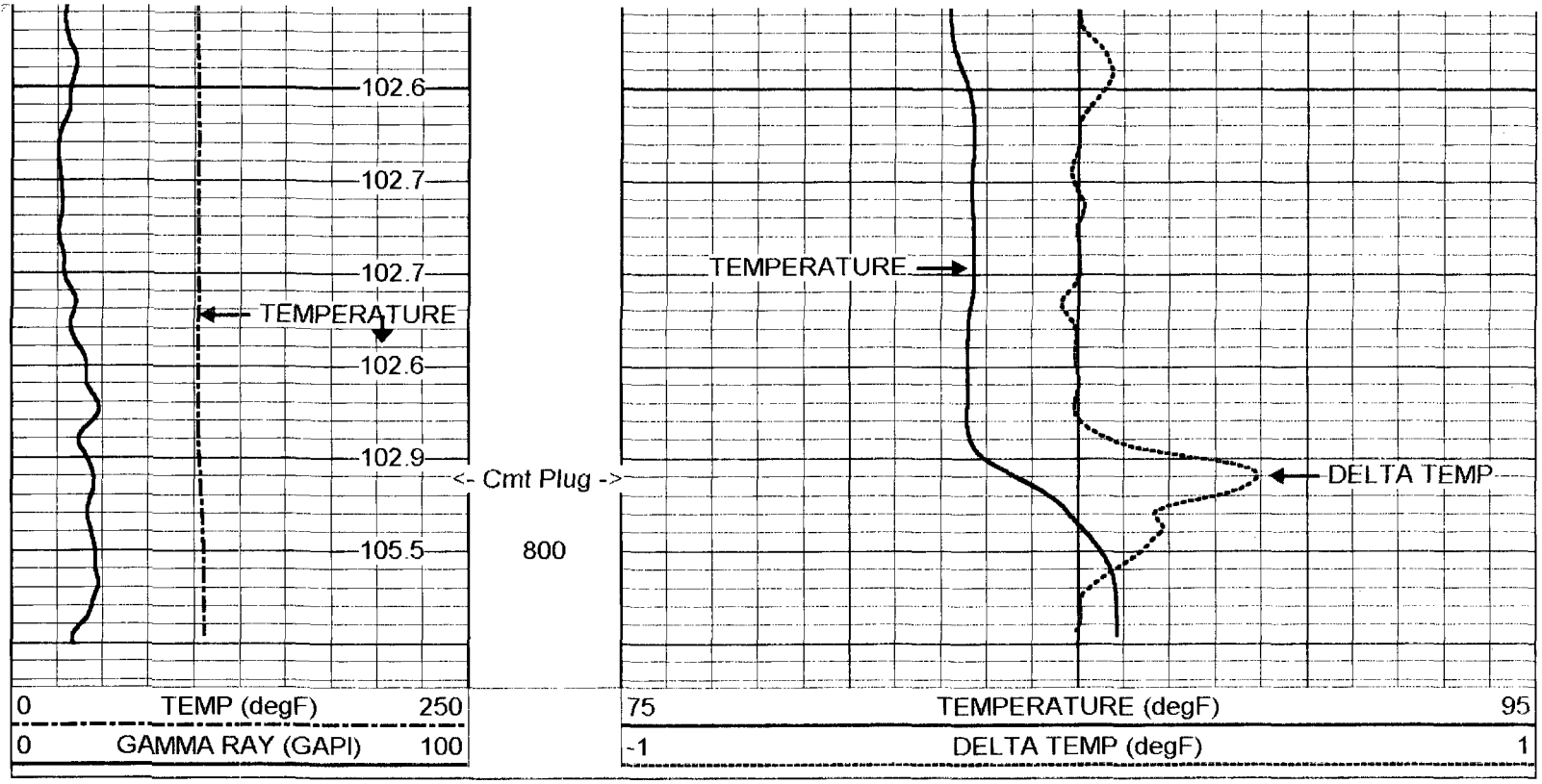


300

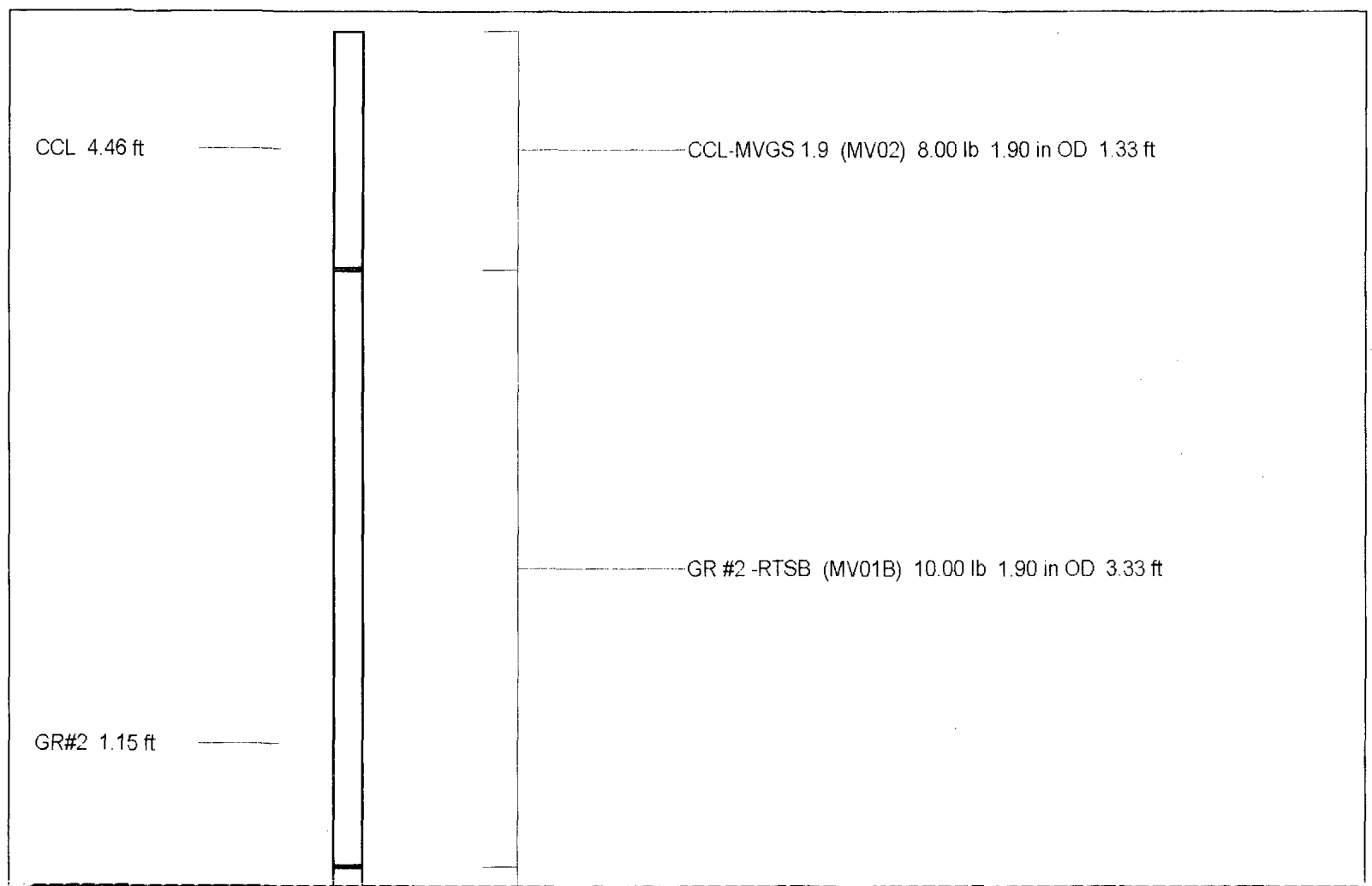
400







Gamma Ray Calibration Report		
Serial Number:	MV01B	
Tool Model:	RTSB	
Performed:	Tue Nov 13 07:15:17 2001	
Calibrator Value:	120	GAPI
Background Reading:	5.55556	cps
Calibrator Reading:	134.922	cps
Sensitivity:	0.927596	GAPI/cps



TEMP 0.10 ft

TEMP-RTS (MV02) 2.00 lb 1.90 in OD 0.46 ft

Dataset:	run4/pass4
Total Length:	5.12 ft
Total Weight:	20.00 lb
O.D.	1.90 in