

Schlumberger

TEMPERATURE LOG

<b>COMPANY</b>	DRILLERS INC.		
<b>WELL</b>	N. FT. MYERS UTILITY IW #1		
<b>FIELD</b>	N. FT. MYERS		
<b>COUNTY</b>	LEE	<b>STATE</b>	FLORIDA
<b>PERMANENT DATUM</b>	PAD LEVEL	<b>ELEV.</b>	
<b>LOG MEASURED FROM</b>	PAD LEVEL	<b>ABOVE PERM. DATUM</b>	
<b>DRILLING MEASURED FROM</b>	PAD LEVEL	<b>ELEV. K.B.</b>	D.F. G.L.
<b>DATE</b>	08-AUG-87		
<b>RUN NO.</b>	1		
<b>DEPTH DRILLER</b>	1086.0 F		
<b>DEPTH LOGGER (SOHL)</b>	1076.0 F		
<b>BLM. LOG INTERVAL</b>	1074.0 F		
<b>TOP LOG INTERVAL</b>	0.0 F		
<b>CASING-DRILLER</b>	24	1086.0 F	
<b>CASING-LOGGER</b>			
<b>BIT SIZE</b>	30		
<b>TYPE FLUID IN HOLE</b>	FRESH WATER		
<b>DENS.</b>	VISC.		
<b>PH</b>	FID. LOSS		
<b>SOURCE OF SAMPLE</b>	NONE		
<b>Rm @ Meas. Temp.</b>			
<b>Rmf @ Meas. Temp.</b>			
<b>Rmo @ Meas. Temp.</b>			
<b>SOURCE: Rmf/ Rmo</b>			
<b>Rm @ BHT</b>			
<b>CHRODATEN ENDED</b>			
<b>LOGGER ON BOTTOM</b>	1800		
<b>MAX. REQ. TEMP.</b>			
<b>EQUIP. LOCATION</b>	8183	FT MYERS	
<b>RECORDED BY</b>	BUCHSEL		
<b>WITNESSED BY</b>	PTT-CAPE-FRAT(ARCANGELI)		

FOLD HERE The well name, location and borehole reference data were furnished by the customer.

All interpretations are opinions based on inferences from electrical or other measurements and we cannot, and do not guarantee the accuracy or correctness of any interpretations, and we shall not, except in the case of gross or willful negligence on our part, be liable or responsible for any loss, costs, damages or expenses incurred or sustained by anyone resulting from any interpretations made by any of our officers, agents or employees. These interpretations are also subject to Clause 4 of our General Terms and Conditions as set out in our current Price Schedule.

<b>Run No.</b>	1
<b>Service Order No.</b>	313442
<b>Drilling Fluid Level</b>	80.0 F
<b>Salinity</b>	50.0 PPM
<b>Rmf @ BHT</b>	●
<b>Rmo @ BHT</b>	●
<b>Logging Speed</b>	2500.0 F/HR
<b>Equipment Data</b>	
<b>Tool Number 1</b>	ATT B
<b>Tool Number 2</b>	PIC B
<b>Tool Number 3</b>	CAL U
<b>Tool Number 4</b>	MTSC
<b>Tool Number 5</b>	
<b>Tool Number 6</b>	
<b>Tool Number 7</b>	
<b>Tool Number 8</b>	
<b>Tool Number 9</b>	
<b>Tool Number 10</b>	
<b>Tool Number 11</b>	
<b>Tool Number 12</b>	

REMARKS:  
THANK YOU FOR USING SCHLUMBERGER!!!

PARAMETERS

NAME	VALUE	UNIT
WMUD	8.00000	LB/G
CDAT		
PTHR	10.0000	F/MN
TIRA	.500000	
FDSH	0.0	G/C3
TCSH	0.0	IN
BHS	CASE	

NAME	VALUE	UNIT
SGSN	0000A-00011	
FCHD	CSID	
NTHR	-10.0000	F/MN
VPCF	.830000	
QIDP	FLOW	
BS	30.0000	IN

SENSOR MEASURE POINT TO TOOL ZERO

DTEM	2.5	FEET
TEMP	2.5	FEET
CVEL	0.0	FEET
EXT	0.0	FEET
EXP2	0.0	FEET
GR	10.3	FEET

MP	1.1	FEET
CCL	19.2	FEET
TENS	19.2	FEET
EXP3	0.0	FEET
EXP1	0.0	FEET

0.0	100.00	60.000	80.000
GR (GAPI)		TEMP(DEGF)	
0.0	-200.0		
CVEL(F/MN)			
0.0	200.00		
CVEL(F/MN)			
-19.00	1.0000		
CCL			
0.0	150.00		
TEMP(DEGF)			

CP 30.22

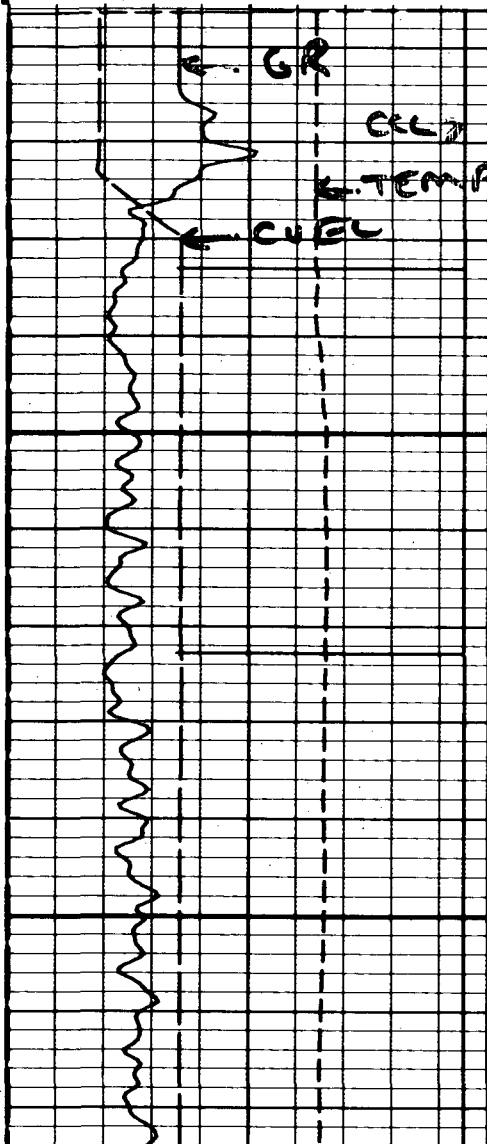
FILE 3

06-AUG-87 18:19

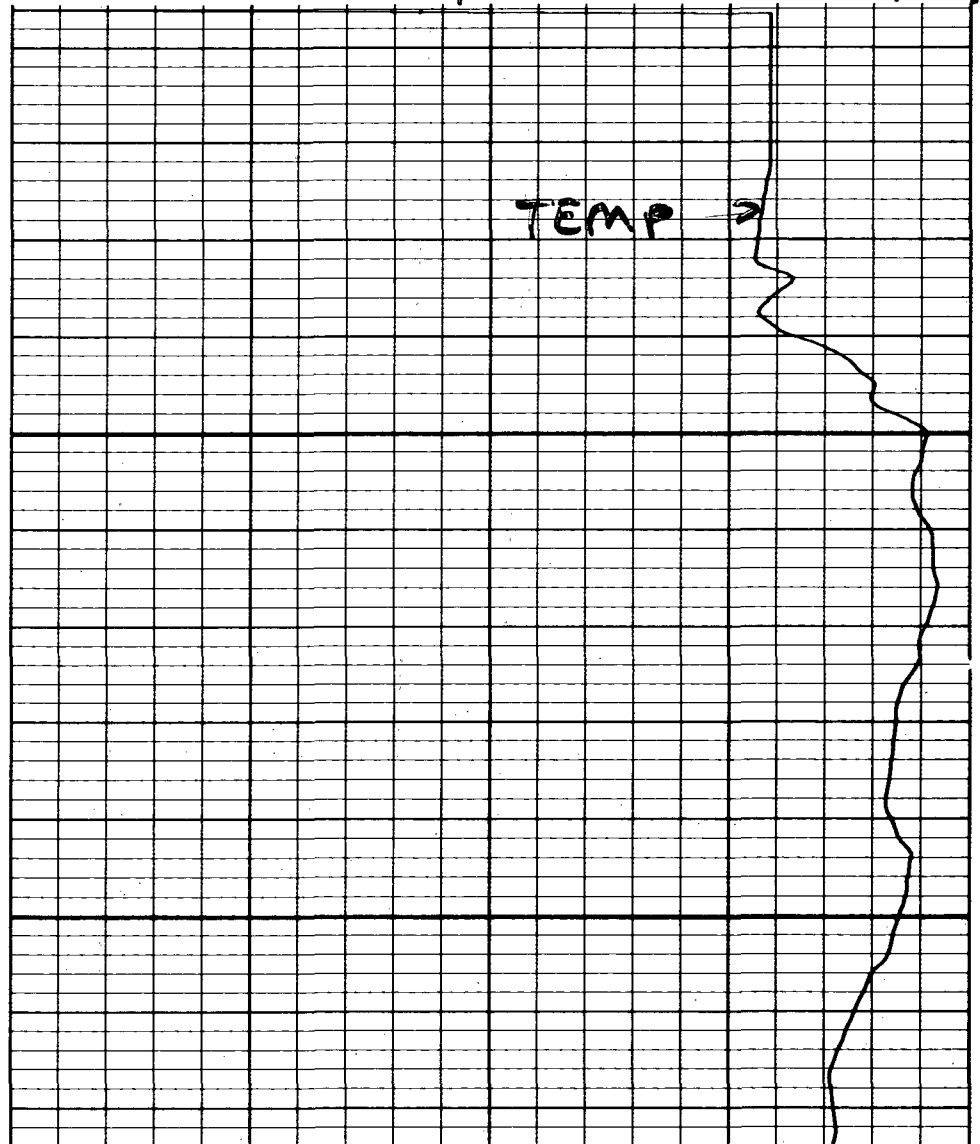
5"/100 80°F

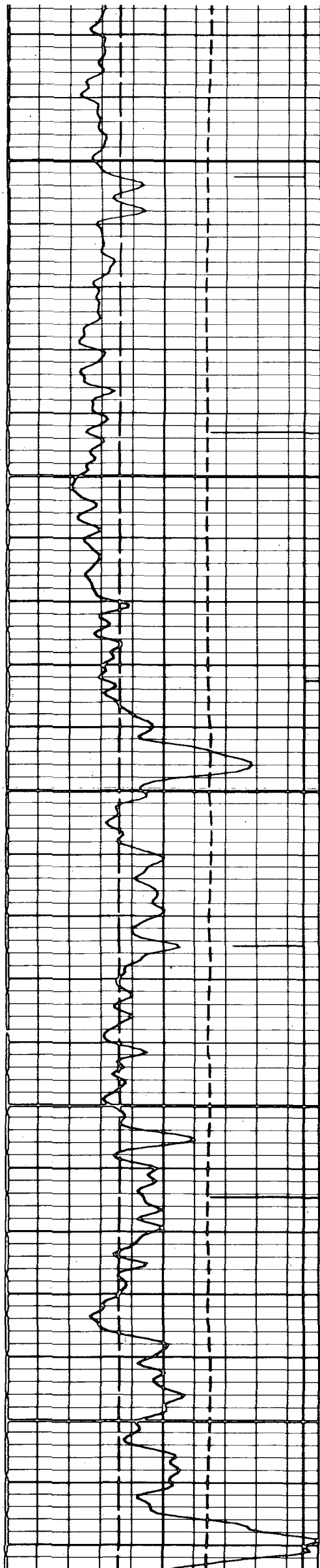
90°F

100°F



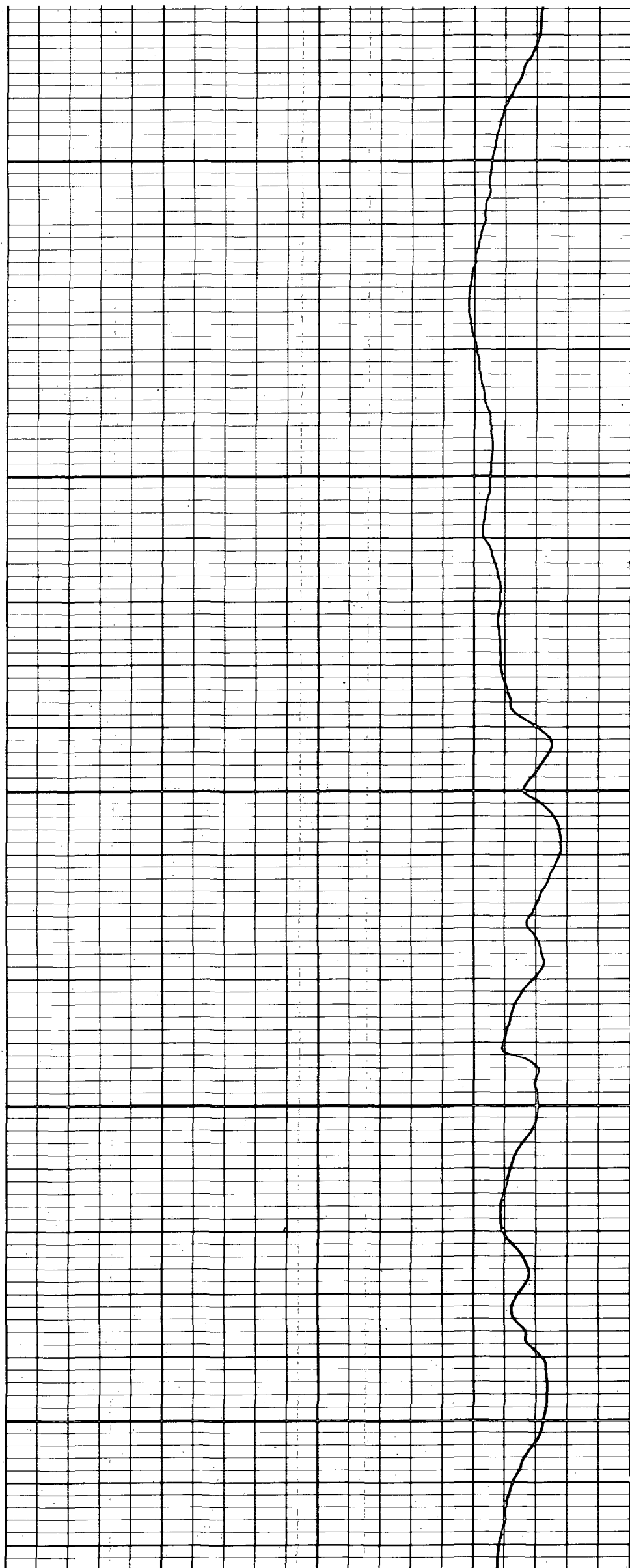
100

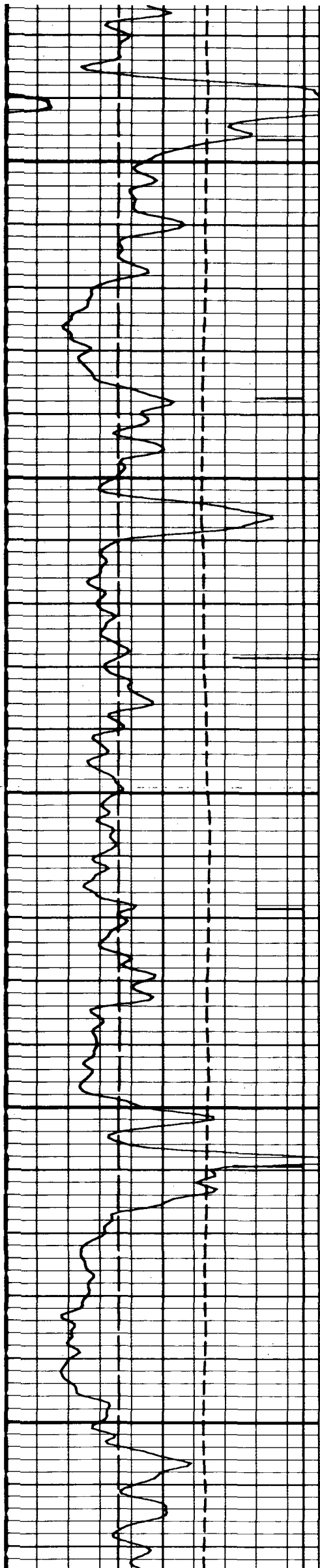




200

300

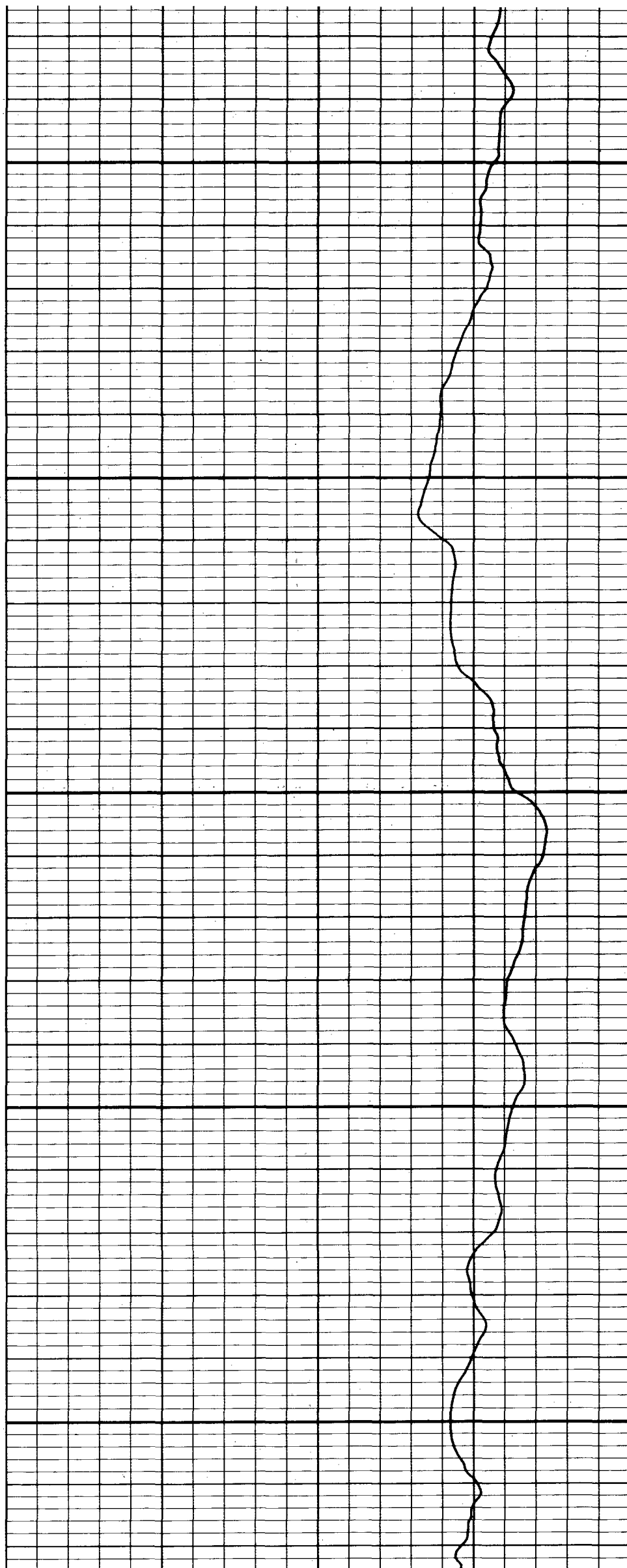


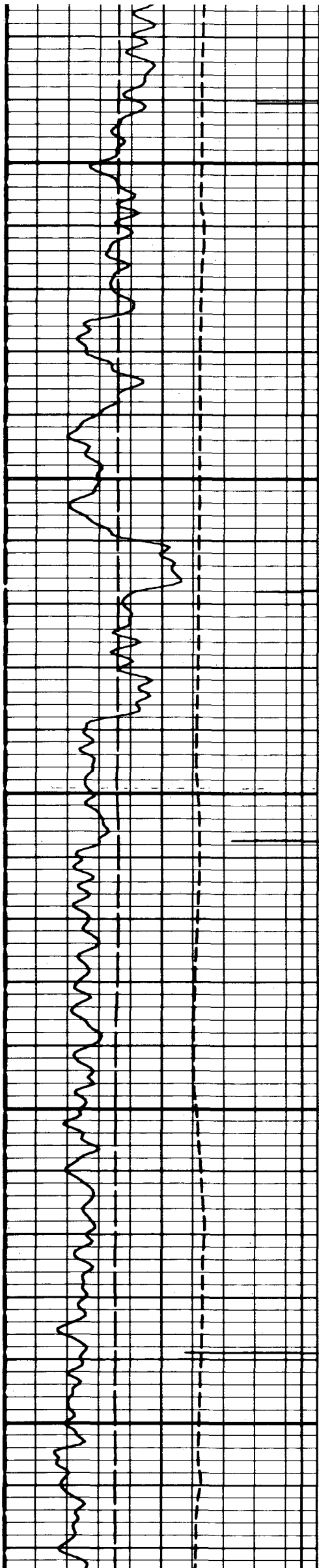


400

500

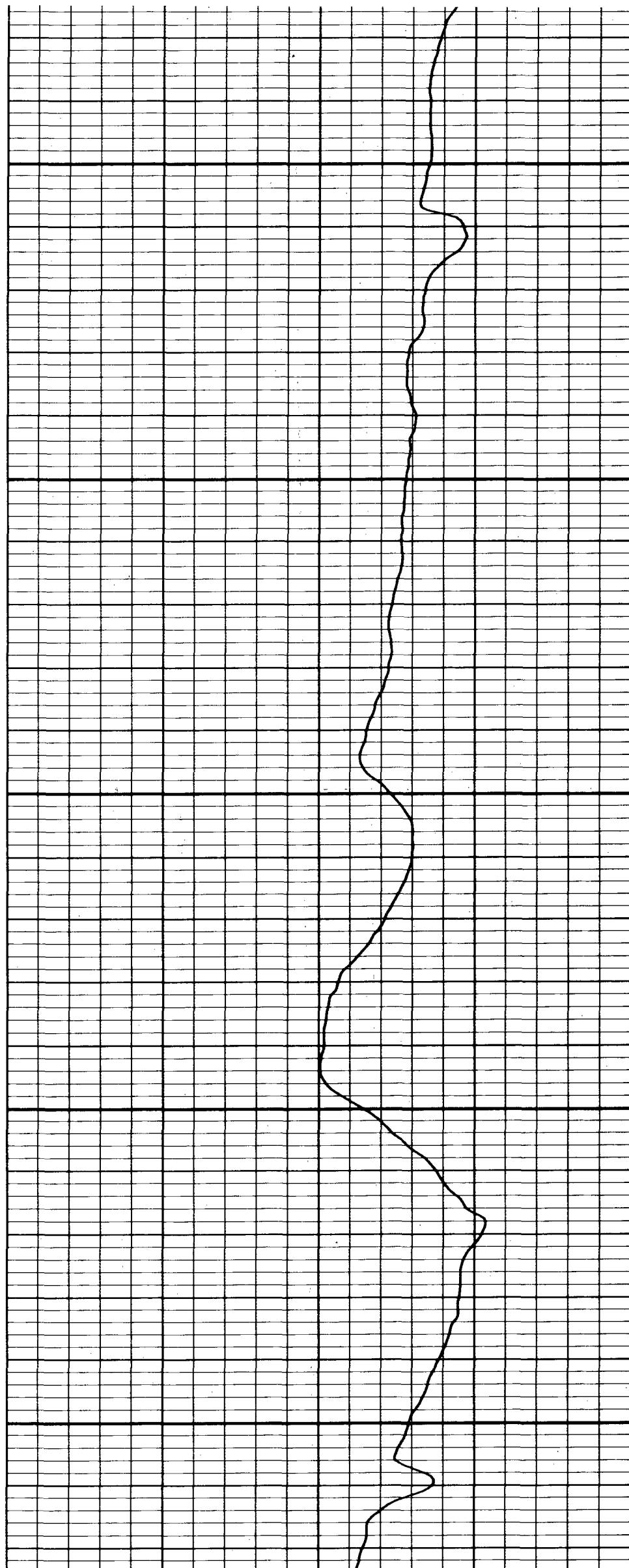
600

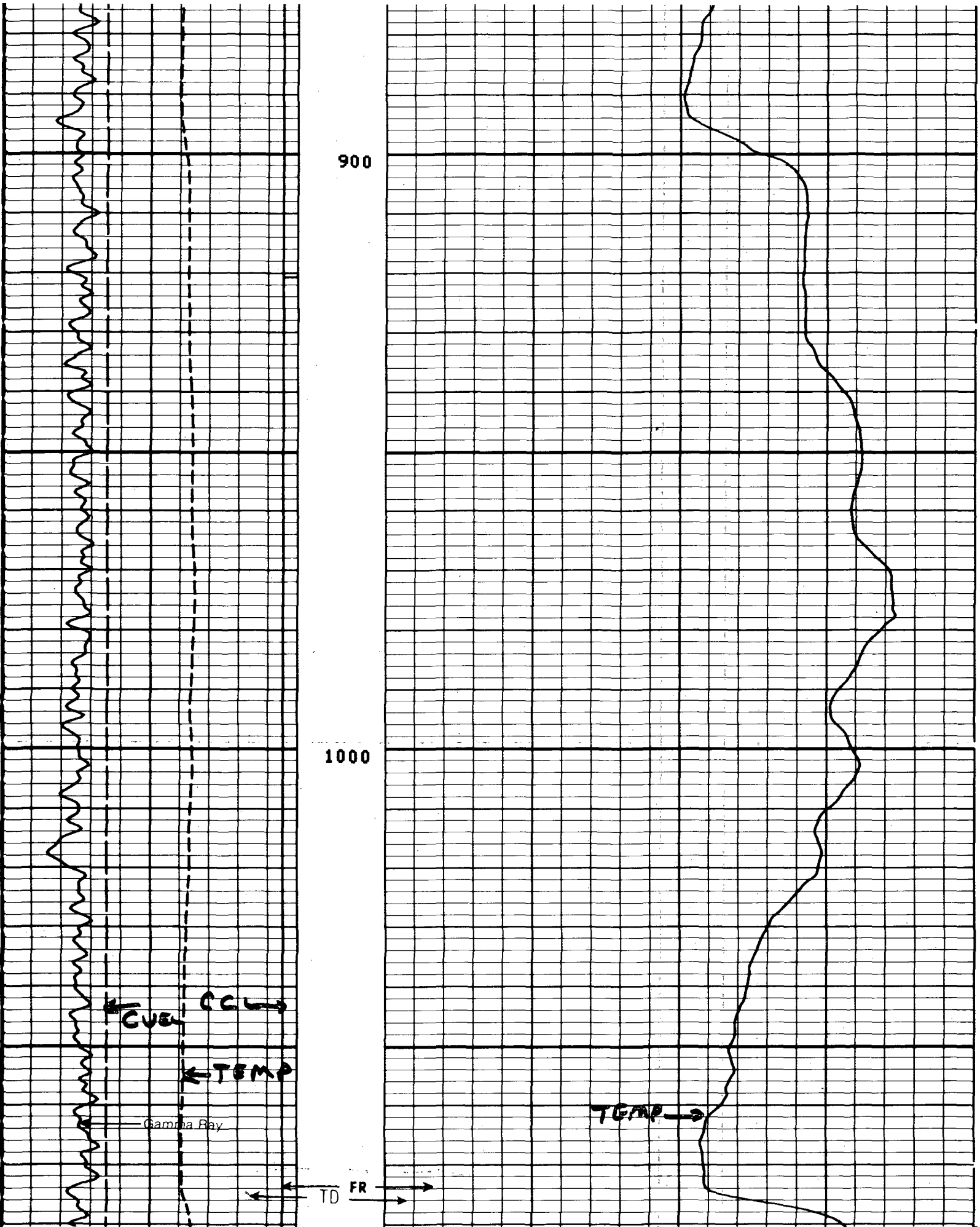




700

800





5"/100" 80°F

90°F

100°F

CP 30.22

FILE 3

06-AUG-87 18:34

0.0	100.00
GR (GAPI)	
0.0	-200.0
CVEL (F/MN)	
0.0	200.00

60.000	80.000
TEMP (DEGF)	

CYCLE/HR

-19.00	1.0000
CCL	
0.0	150.00
TEMP(DEGF)	

DATA ACQUIRED LOGGING DOWN