

Schlumberger

TEMPERATURE LOG

COMPANY DRILLERS INC.

WELL N. FT. MYERS UTILITY IW

FIELD N. FT. MYERS

COUNTY LEE STATE FLORIDA

Other Data: HRT, CEL-VOL

LOCATION: API SERIAL NO., SECT., TWP., RANGE

CLIENT FILE NO., LOCATION, WELL, COMPANY

N. FT. MYERS UTILITY IW, DRILLERS INC.

PERMANENT DATUM, LOG MEASURED FROM, DRILLING MEASURED FROM, PAD LEVEL, ELEV., D.F., G.L.

DATE 21-AUG-07

RUN NO. 2

DEPTH DRILLER 1570.0 F

DEPTH LOGGER (SEAL) 1558.0 F

DRILL LOG INTERVAL 1558.0 F

TRAP LOG INTERVAL 10.0 F

COILING-DRILLER 20 @ 1800.0 F, 24 @ 1000.0 F

COILING-LOGGER 30 @ 1088.0 F

BIT SIZE 30

TYPO FLUID IN WELL FRESH WATER

DRILLING FLUID IN WELL FRESH WATER

DRILLING FLUID IN WELL FRESH WATER

DRILLING FLUID IN WELL FRESH WATER

DRILLING FLUID IN WELL FRESH WATER

DRILLING FLUID IN WELL FRESH WATER

DRILLING FLUID IN WELL FRESH WATER

DRILLING FLUID IN WELL FRESH WATER

DRILLING FLUID IN WELL FRESH WATER

DRILLING FLUID IN WELL FRESH WATER

DRILLING FLUID IN WELL FRESH WATER

DRILLING FLUID IN WELL FRESH WATER

DRILLING FLUID IN WELL FRESH WATER

DRILLING FLUID IN WELL FRESH WATER

DRILLING FLUID IN WELL FRESH WATER

FOLD HERE The well name, location and borehole reference data were furnished by the customer.

All interpretations are opinions based on inferences from electrical or other measurements and we cannot, and do not guarantee the accuracy or correctness of any interpretations, and we shall not, except in the case of gross or willful negligence on our part, be liable or responsible for any loss, costs, damages or expenses incurred or sustained by anyone resulting from any interpretations made by any of our officers, agents or employees. These interpretations are also subject to Clause 4 of our General Terms and Conditions as set out in our current Price Schedule.

Run No.	2
Service Order No.	312351
Drilling Fluid Level	10.0 F
Scrinity	
Run 1 BHT	⊗
Run 2 BHT	⊗
Logging Speed	2800.0 F/HR
Equipment Data	
Tool Number 1	HTTB
Tool Number 2	HTU 1838
Tool Number 3	
Tool Number 4	
Tool Number 5	
Tool Number 6	
Tool Number 7	
Tool Number 8	
Tool Number 9	
Tool Number 10	
Tool Number 11	
Tool Number 12	

REMARKS:  
THANK YOU FOR USING SCHLUMBERGER!!!

PARAMETERS

NAME	VALUE	UNIT	NAME	VALUE	UNIT
MSEC	4.50000	MMHD	SBR	1.00000	OHMM
DSEC	4.50000	MMHD	BS	8.00000	IN
BHS	OPEN				

SENSOR MEASURE POINT TO TOOL ZERO

CCL	7.8	FEET	TENS	15.9	FEET
SPAR	5.7	FEET	SP	5.7	FEET
LL8	7.8	FEET	ILM	5.8	FEET
ILD	9.4	FEET			

0.0	150.00	80.000	100.00
CLL8<MMHD>		CLL8<MMHD>	
-19.00	1.0000		
CCL			

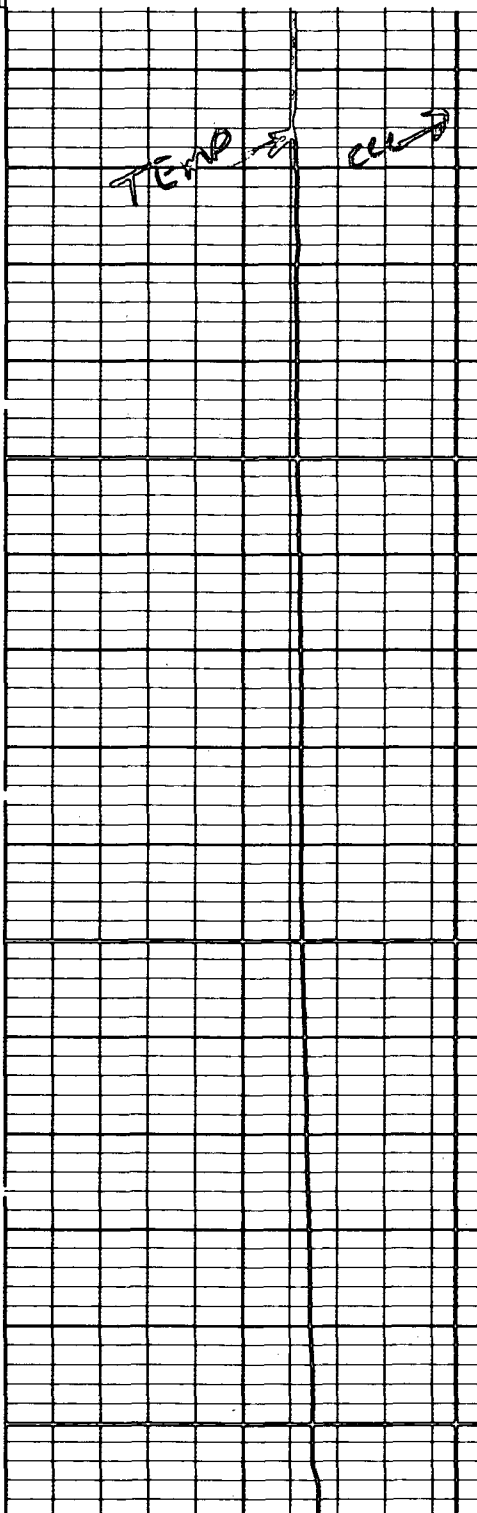
CP 30.22

FILE 3 24-AUG-87 21:11

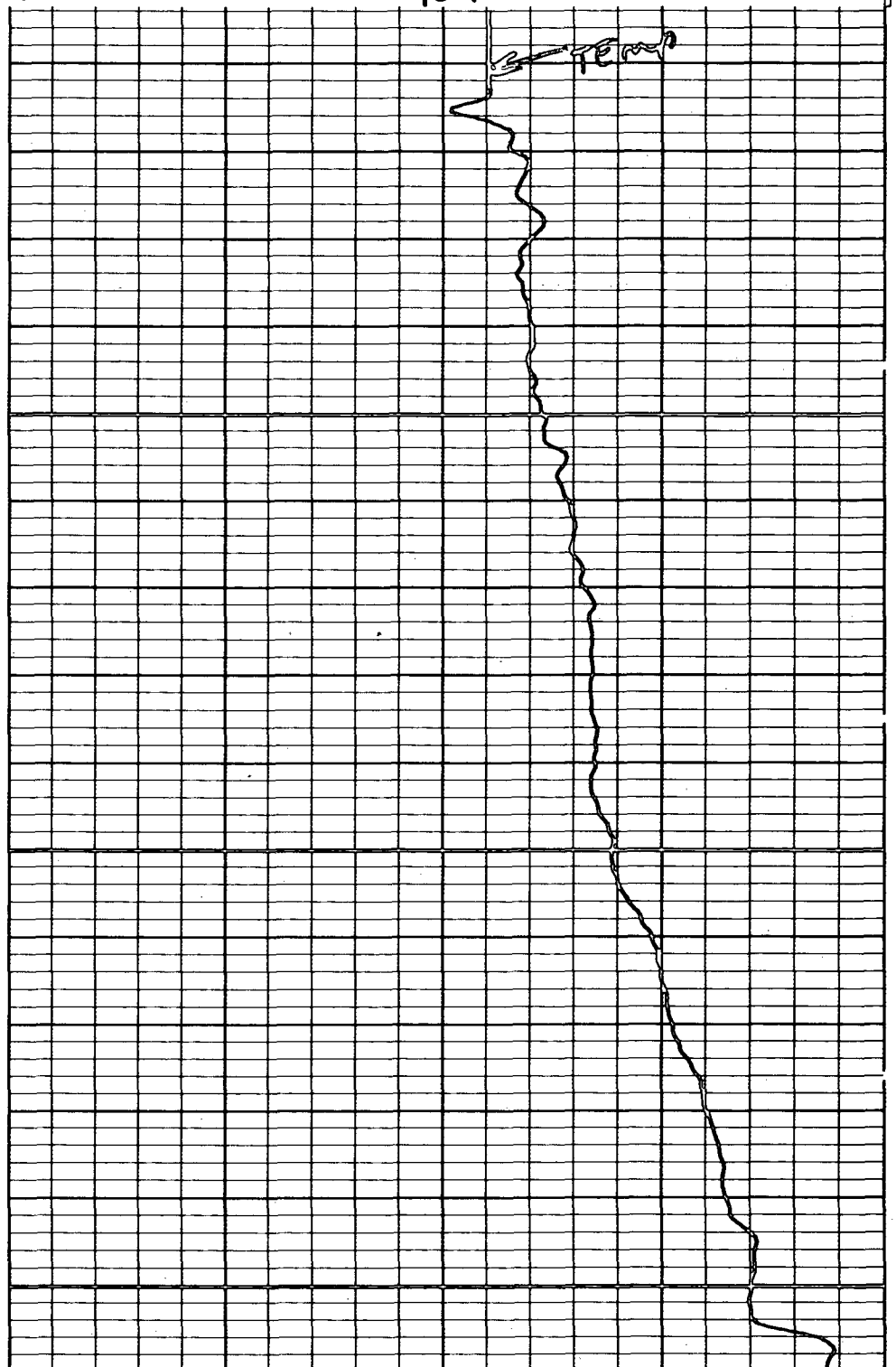
5"/100" 80°F

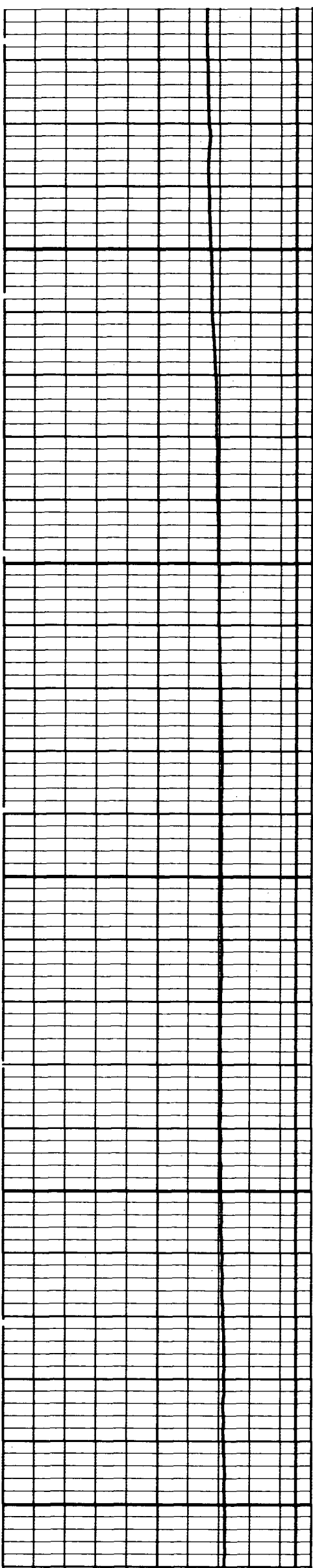
90°F

100°F



100

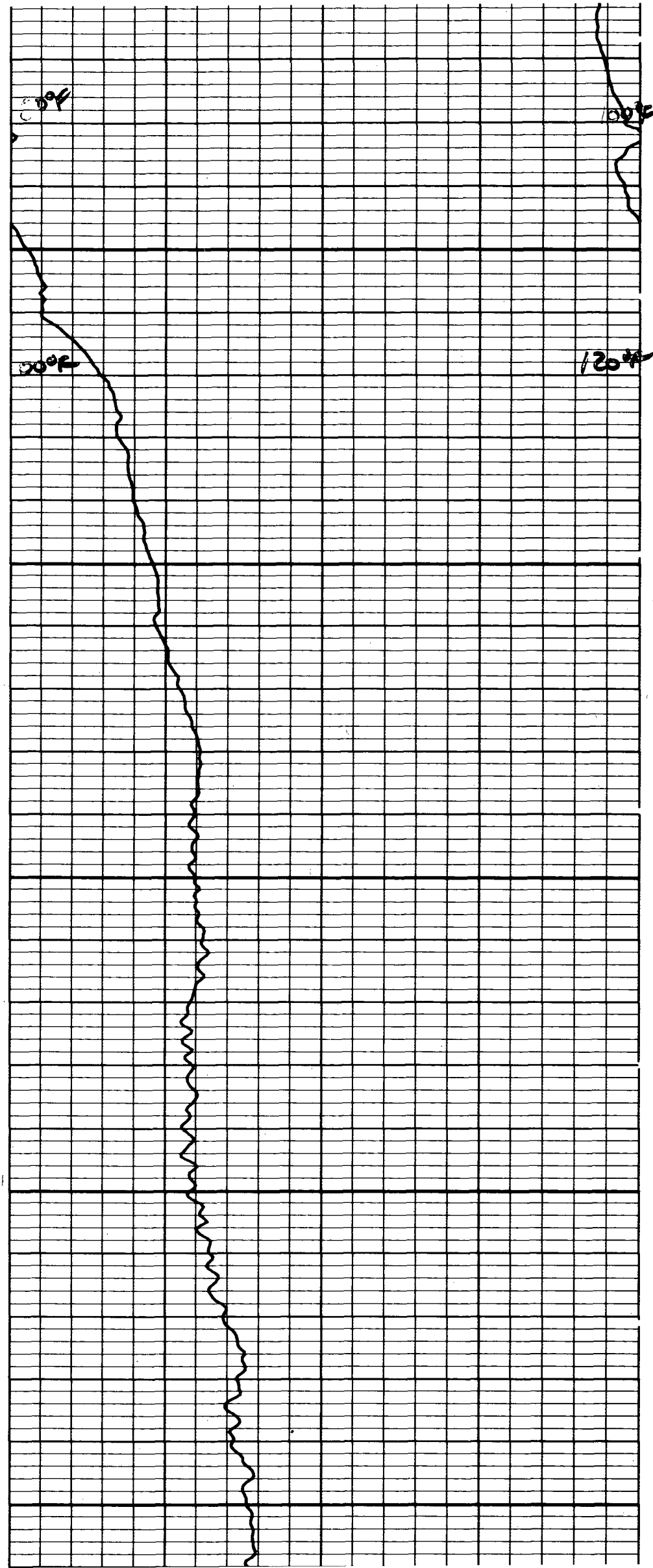


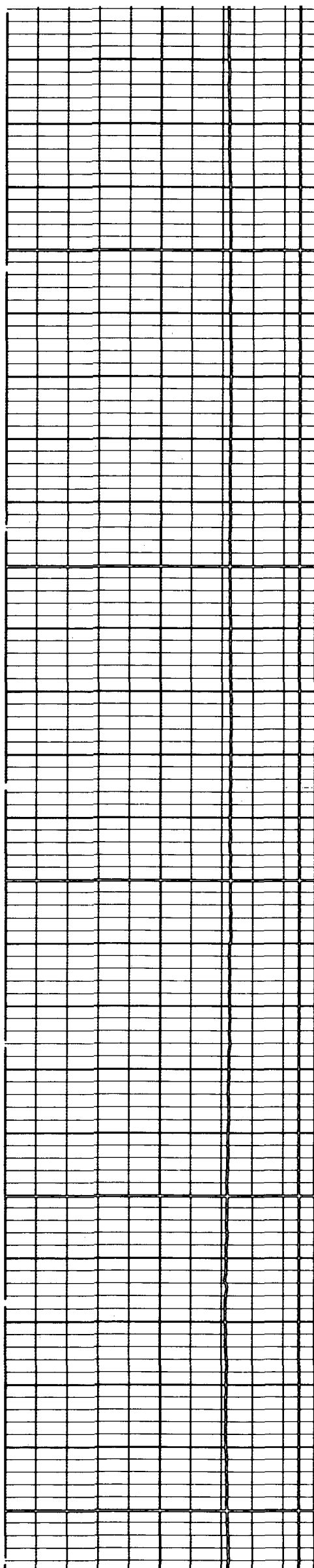


200

300

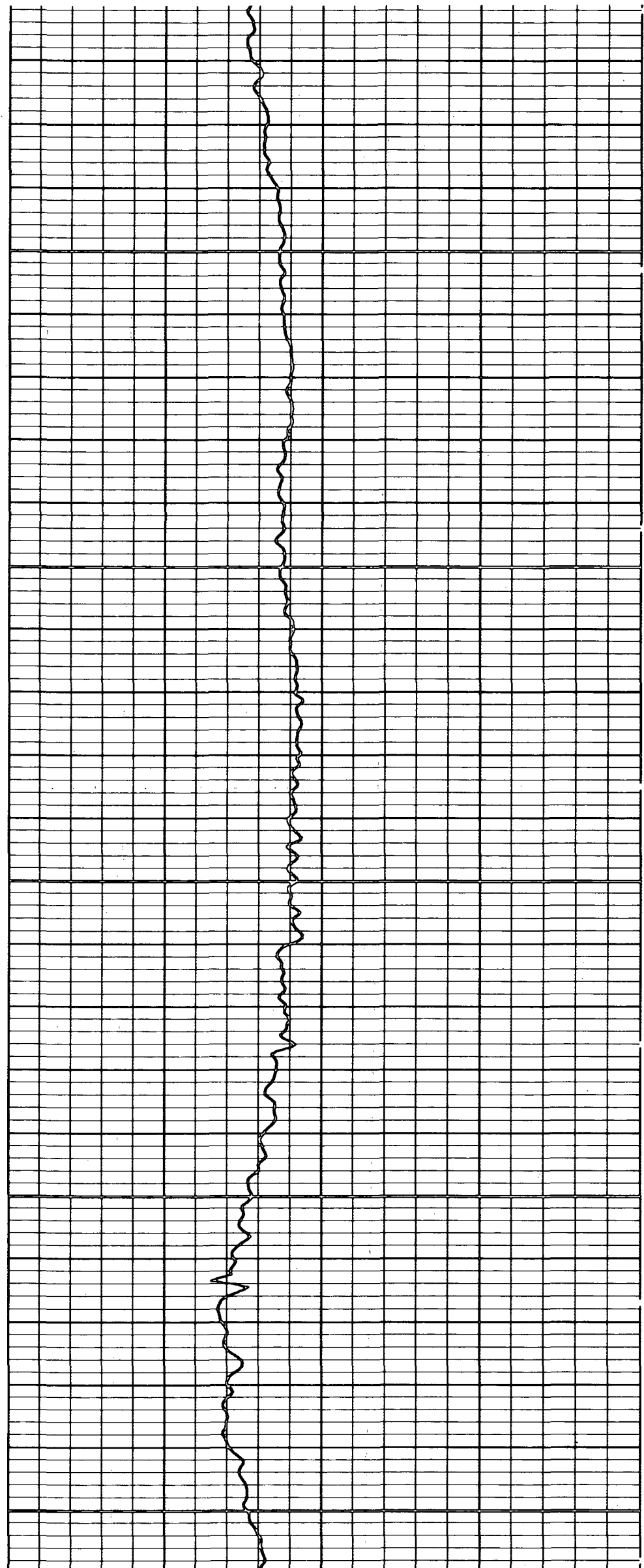
400

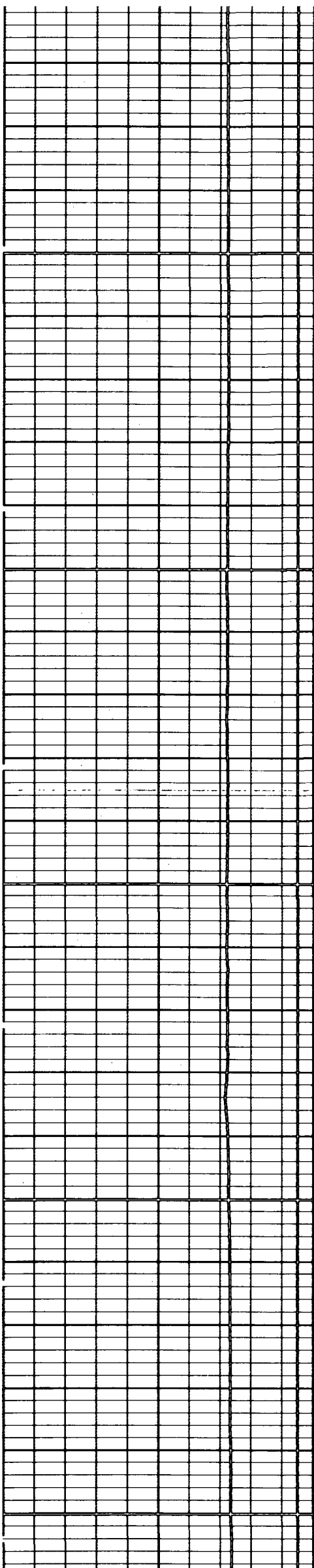




500

600

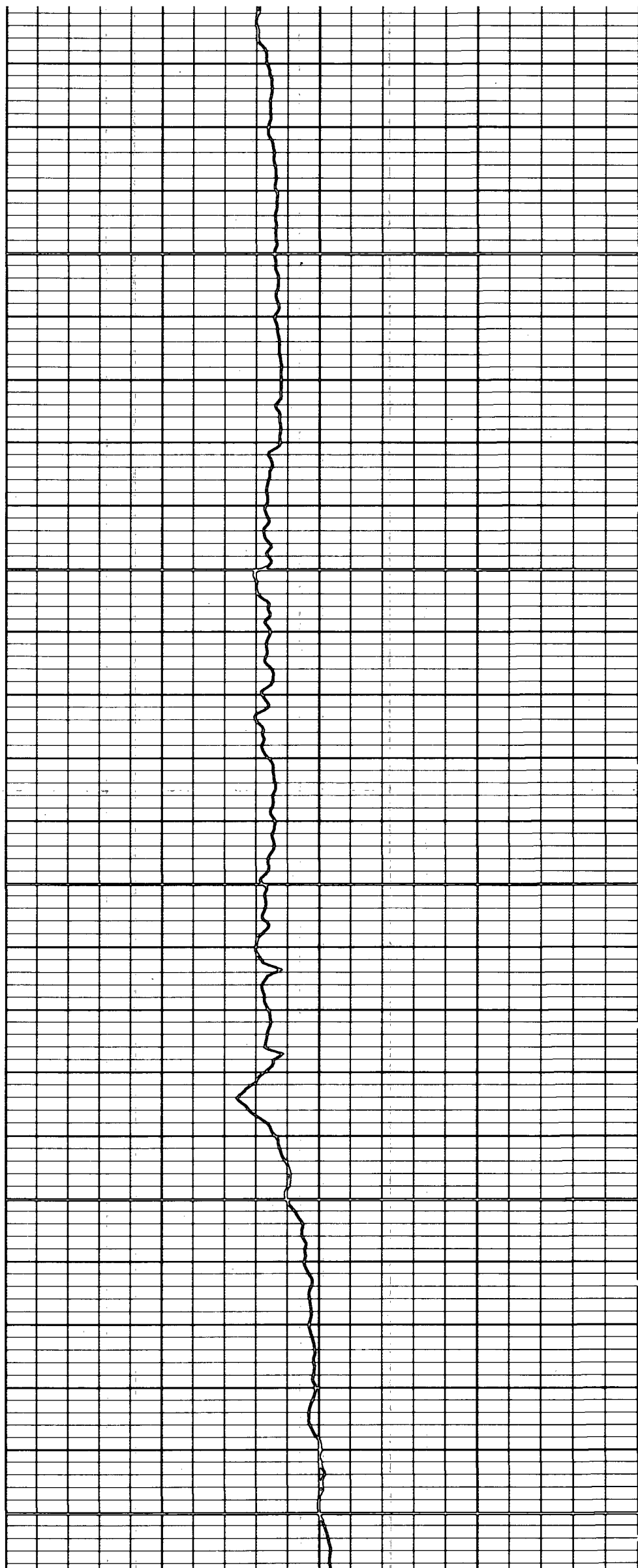


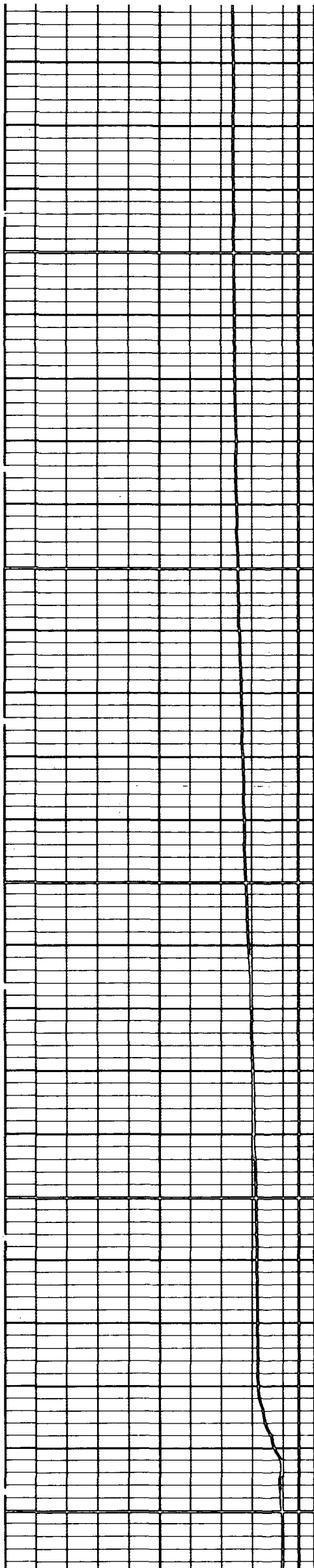


700

800

900





1000

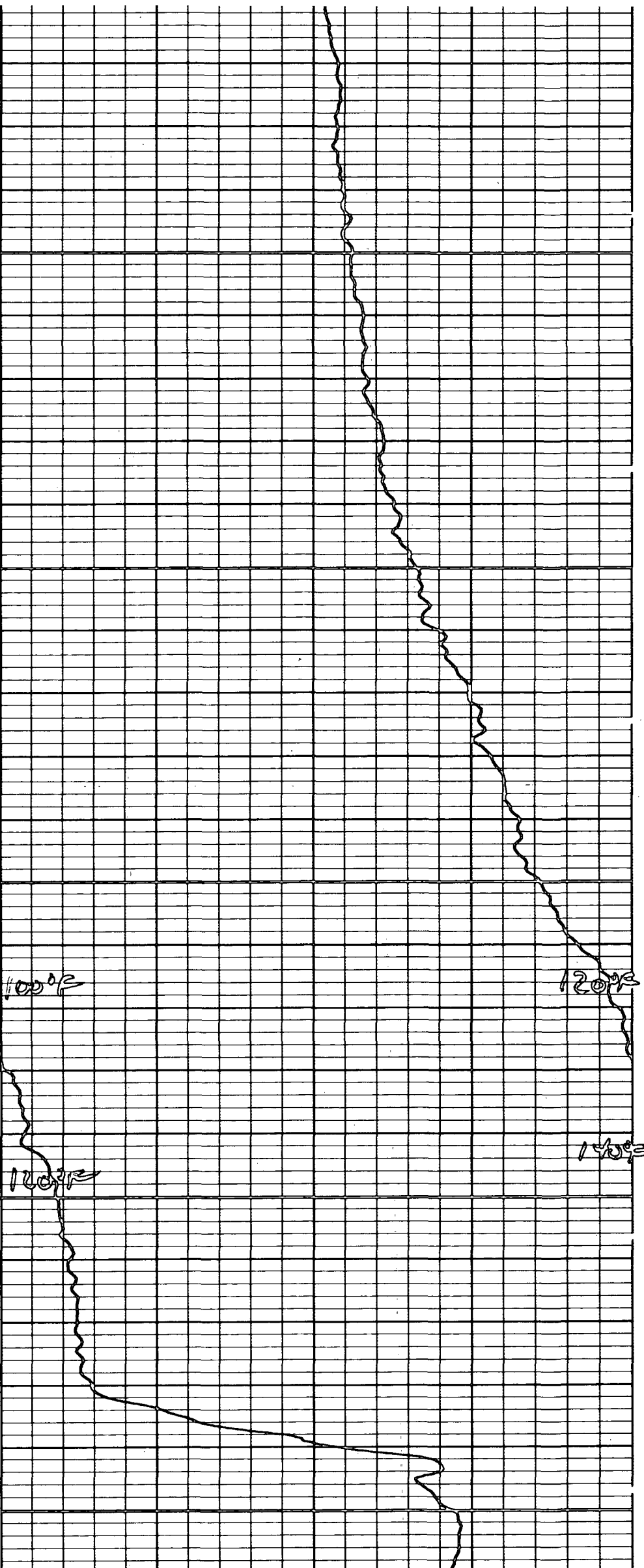
100°F

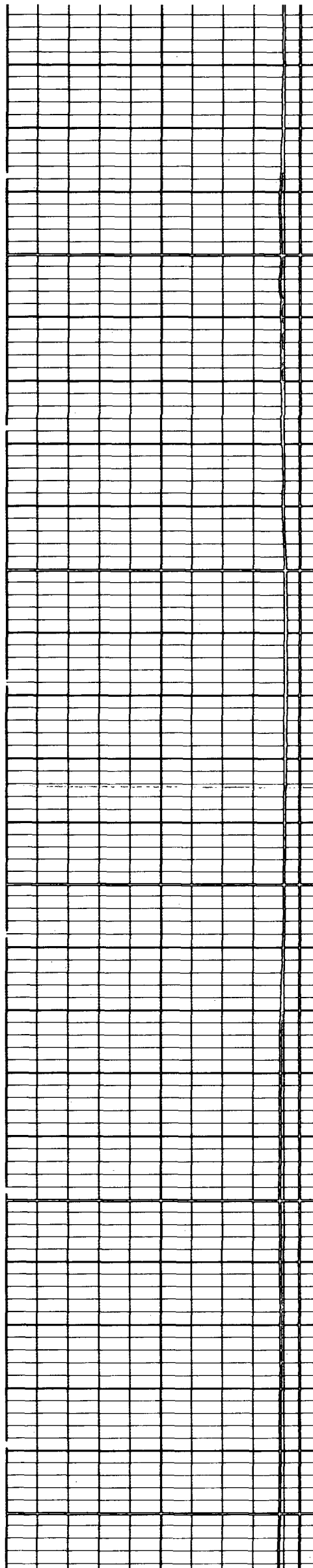
120°F

1100

140°F

150°F

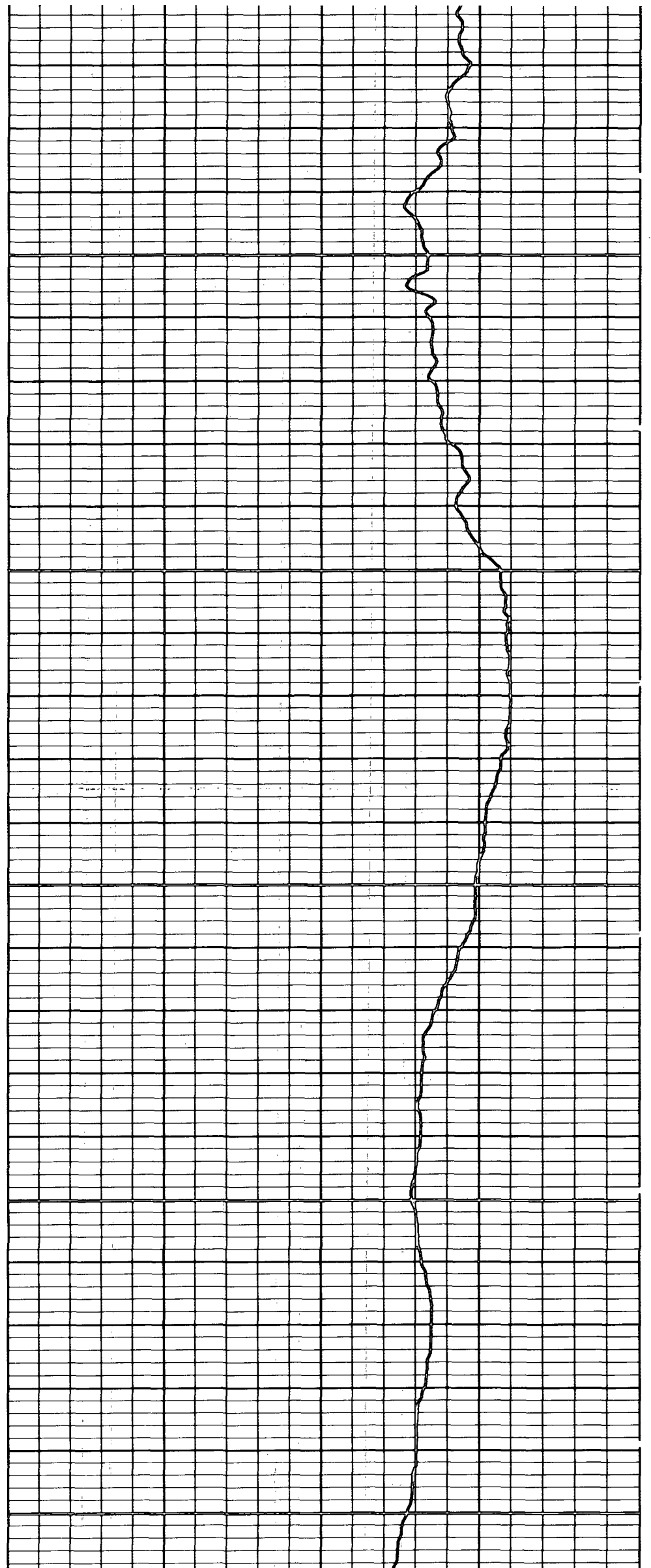


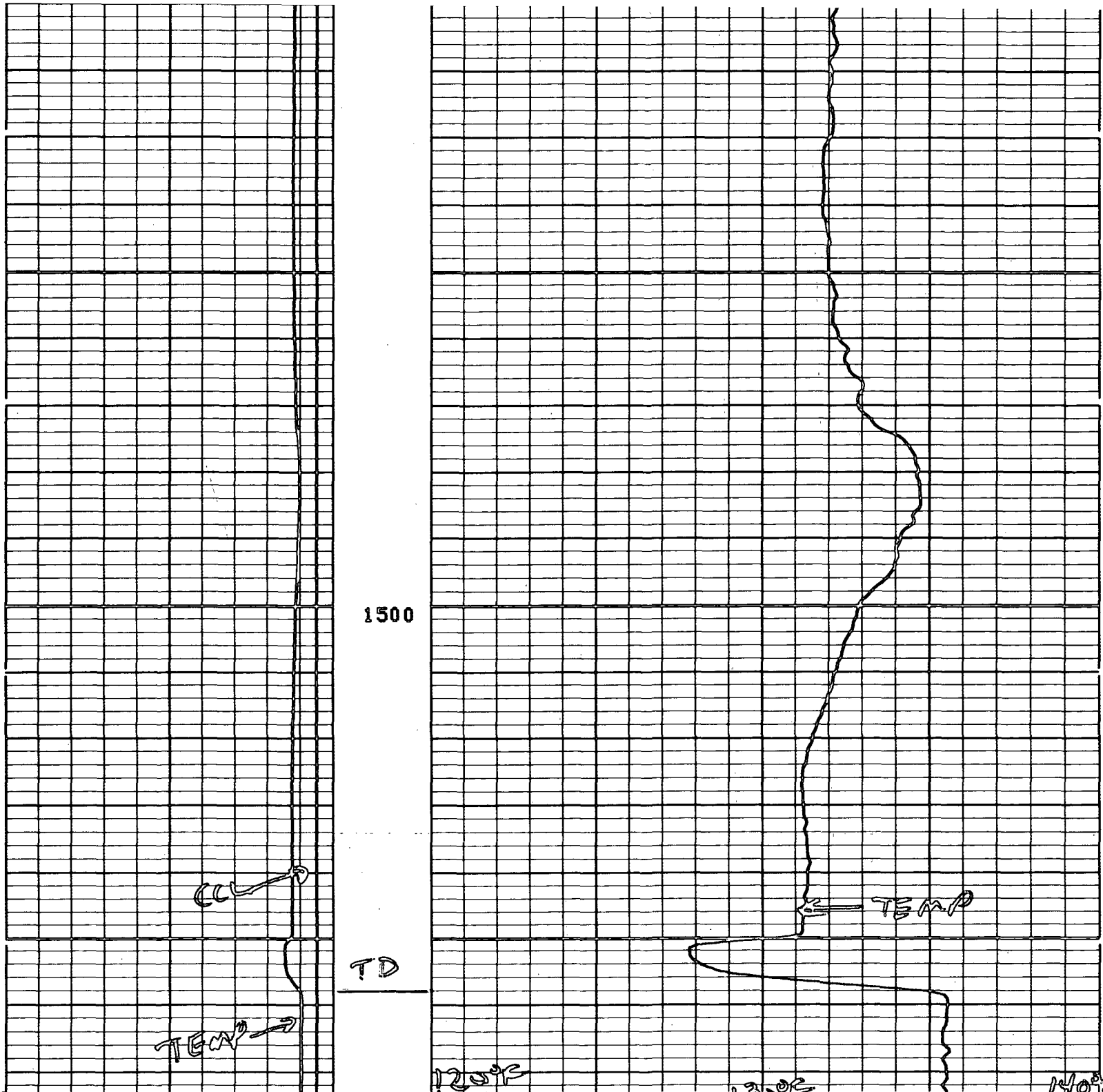


1200

1300

1400





5"/100"

CP 30.22

FILE 3

24-AUG-87 21:50

0.0	150.00	80.000	100.00
CLL8(MMHD)		CLL8(MMHD)	
-19.00	1.0000		
CCL			