

Schlumberger

TEMPERATURE LOG

COUNTY	LEE	COMPANY	DRILLERS INC.
FIELD	N. FT. MYERS	WELL	N. FT. MYERS UTILITY IW
LOCATION		COUNTY	LEE
WELL	N. FT. MYERS UTILITY IW	STATE	FLORIDA
COMPANY	DRILLERS INC.	FIELD	N. FT. MYERS
PERMANENT DATUM	PAD LEVEL	API SERIAL NO.	SECT.
LOG MEASURED FROM	PAD LEVEL	TWP.	RANGE
DRILLING MEASURED FROM	PAD LEVEL	Elev.	Other Services: DIL BHC BGT FBS HRT
DATE	01-DEC-87	Elev. K.B.	D.F. G.L.
RUN NO.	7		
DEPTH DRILLER	2606.0 F		
DEPTH LOGGER (SCHL.)	2606.0 F		
BITM. LOG INTERVAL	2606.0 F		
TOP LOG INTERVAL	70.0 F		
CASING-DRILLER	12 3/4 @ 2340.0 F	20	@ 1580.0 F
CASING-LOGGER	2340.0 F		
BIT SIZE	11	24	
TYPE FLUID IN HOLE	water		
DENS.	8.10 LB/G		
VISC.			
PH			
SOURCE OF SAMPLE	PIT		
Rm @ Meas. Temp.	185 OHMM	@	81.0 DEGF
Rmt @ Meas. Temp.		@	
Rmc @ Meas. Temp.		@	
SOURCE: Rmt Rmc			
Rm @ BHT	-000 OHMM	@	
Circulation Ended			
Logger on Bottom	1800		
Max. Rec. Temp.			
Equip. Location	8193	FT MYERS	
Recorded By	BUCHTEL		
Witnessed By	PITT-FRATARCANGELU		

FOLD HERE The well name, location and borehole reference data were furnished by the customer.

All interpretations are opinions based on inferences from electrical or other measurements and we cannot, and do not guarantee the accuracy or correctness of any interpretations, and we shall not, except in the case of gross or willful negligence on our part, be liable or responsible for any loss, costs, damages or expenses incurred or sustained by anyone resulting from any interpretations made by any of our officers, agents or employees. These interpretations are also subject to Clause 4 of our General Terms and Conditions as set out in our current Price Schedule.

Run No.	7
Service Order No.	534262
Drilling Fluid Level	20.0 F
Salinity	
Rmt @ BHT	@
Rmc @ BHT	@
Logging Speed	3000.0 F/HR
Equipment Data	
Tool Number 1	HTTB
Tool Number 2	HTM 35
Tool Number 3	SGT 1282
Tool Number 4	NLM 65
Tool Number 5	DEM 323
Tool Number 6	
Tool Number 7	
Tool Number 8	
Tool Number 9	
Tool Number 10	
Tool Number 11	
Tool Number 12	

REMARKS:  
WELL DRILLED BY REVERSE AIR , NO MUD IN HOLE  
THANK YOU FOR USING SCHLUMBERGER!!!

PARAMETERS

NAME VALUE UNIT  
 PP RECD  
 BS 11.0000 IN

NAME VALUE UNIT  
 DD 21.0000 F  
 BHS OPEN

TAPE NOT MADE

SENSOR MEASURE POINT TO TOOL ZERO

TEMP 1.3 FEET  
 CVEL 0.0 FEET  
 EXP 0.0 FEET

CCL 6.3 FEET  
 TENS 6.3 FEET

0.0	-200.0	-1.000	1.0000
	CVEL(F/MN)		DTEM(DF/F)
0.0	200.00	60.000	80.000
	CVEL(F/MN)		TEMP(DEGF)
-19.00	1.0000		
	CCL		
0.0	150.00		
	TEMP(DEGF)		

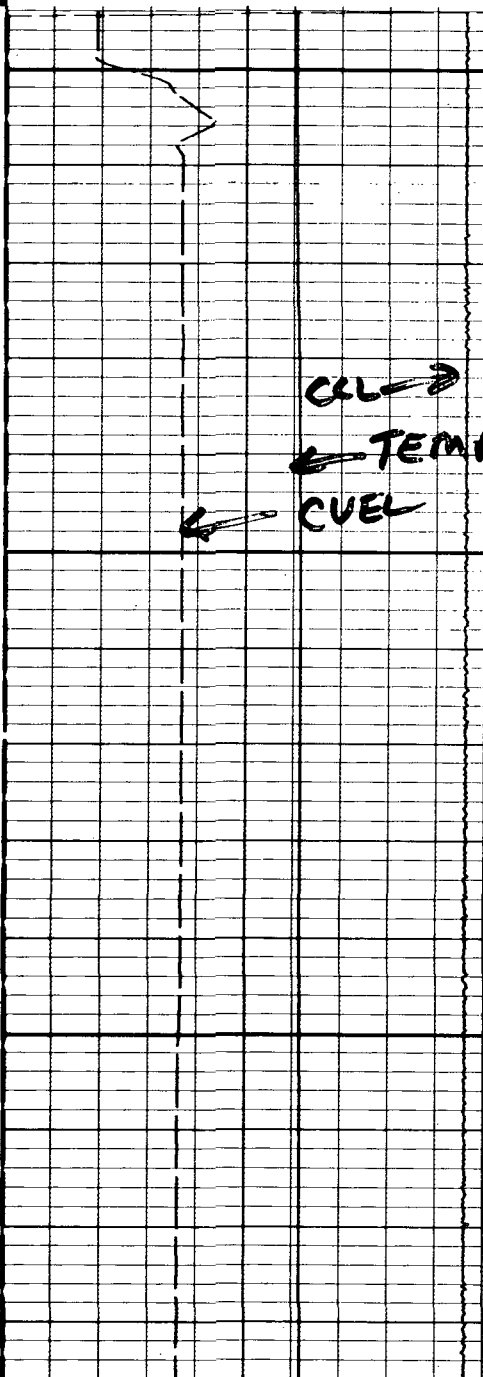
CP 27.772

FILE 5 01-DEC-87 19:01  
 DATA ACQUIRED 01-DEC-87 00:46

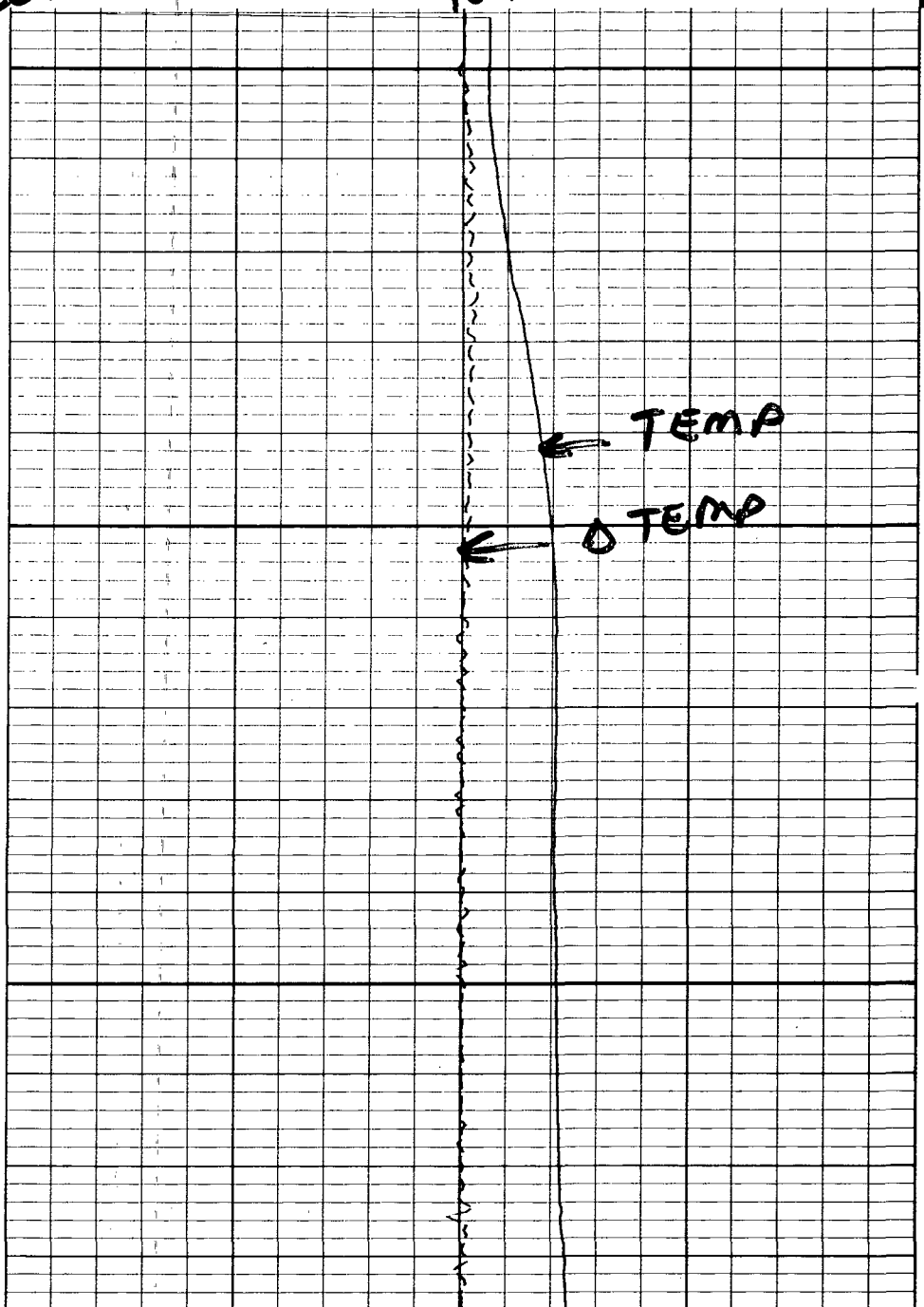
80°F

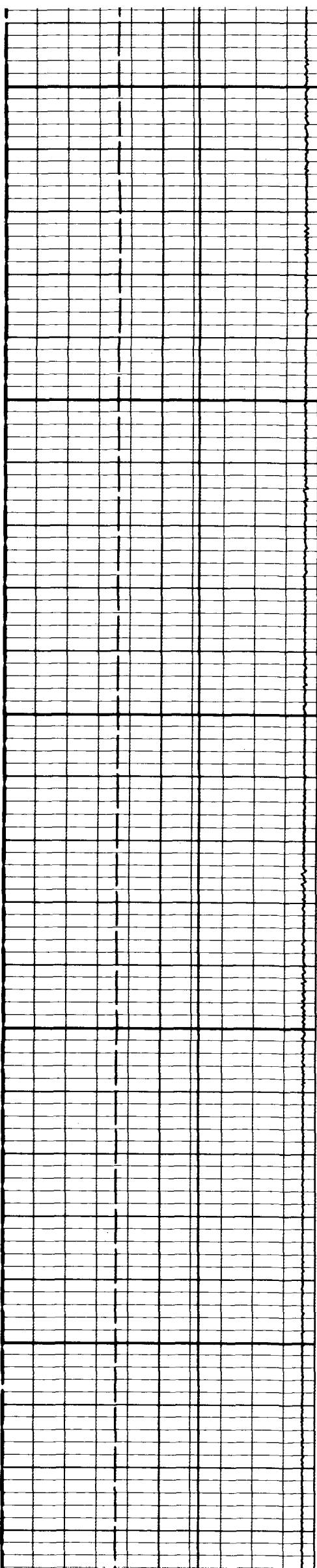
90°F

100°F

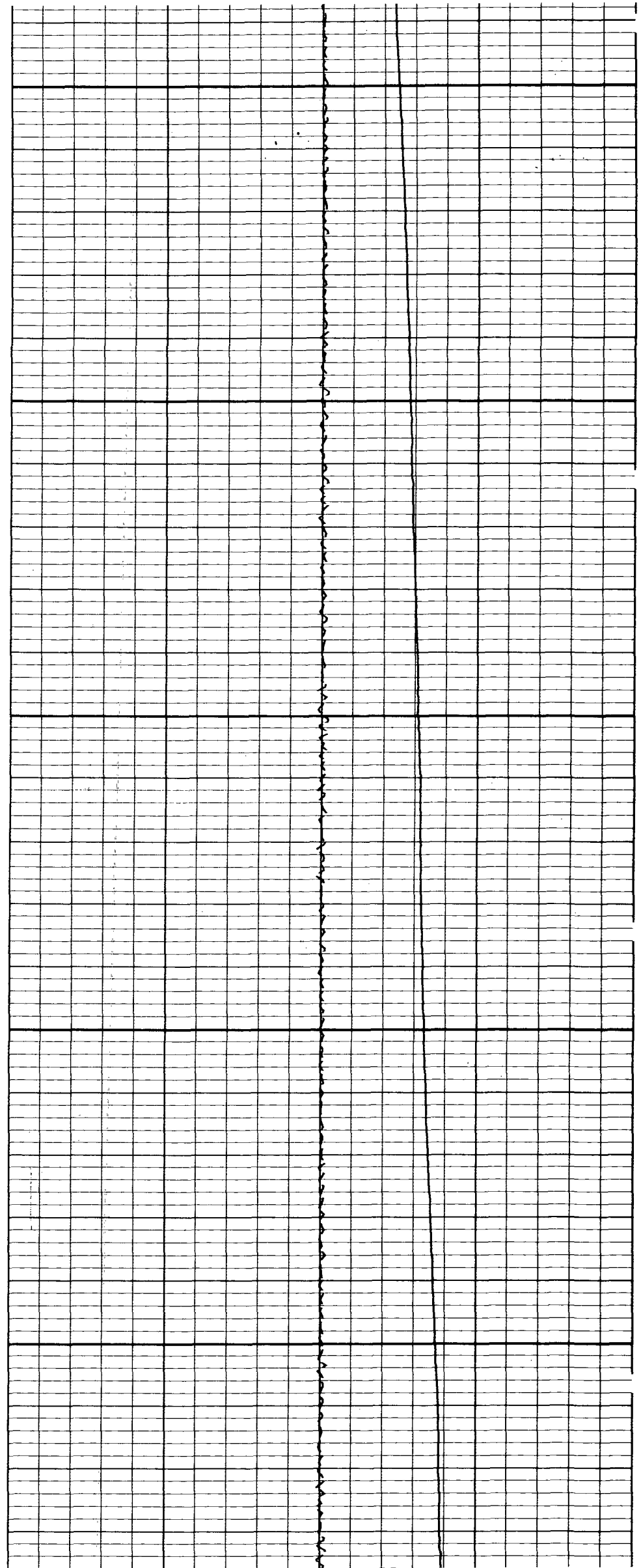


100



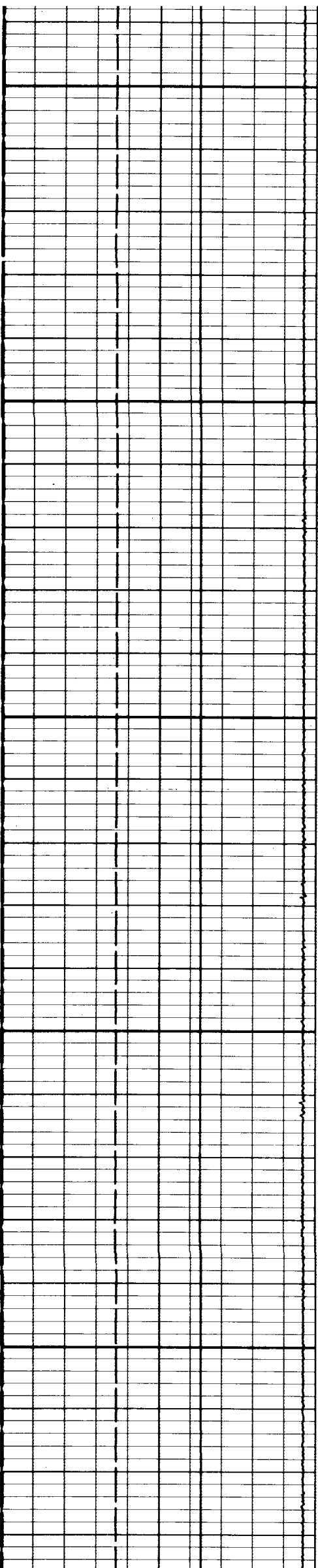


200



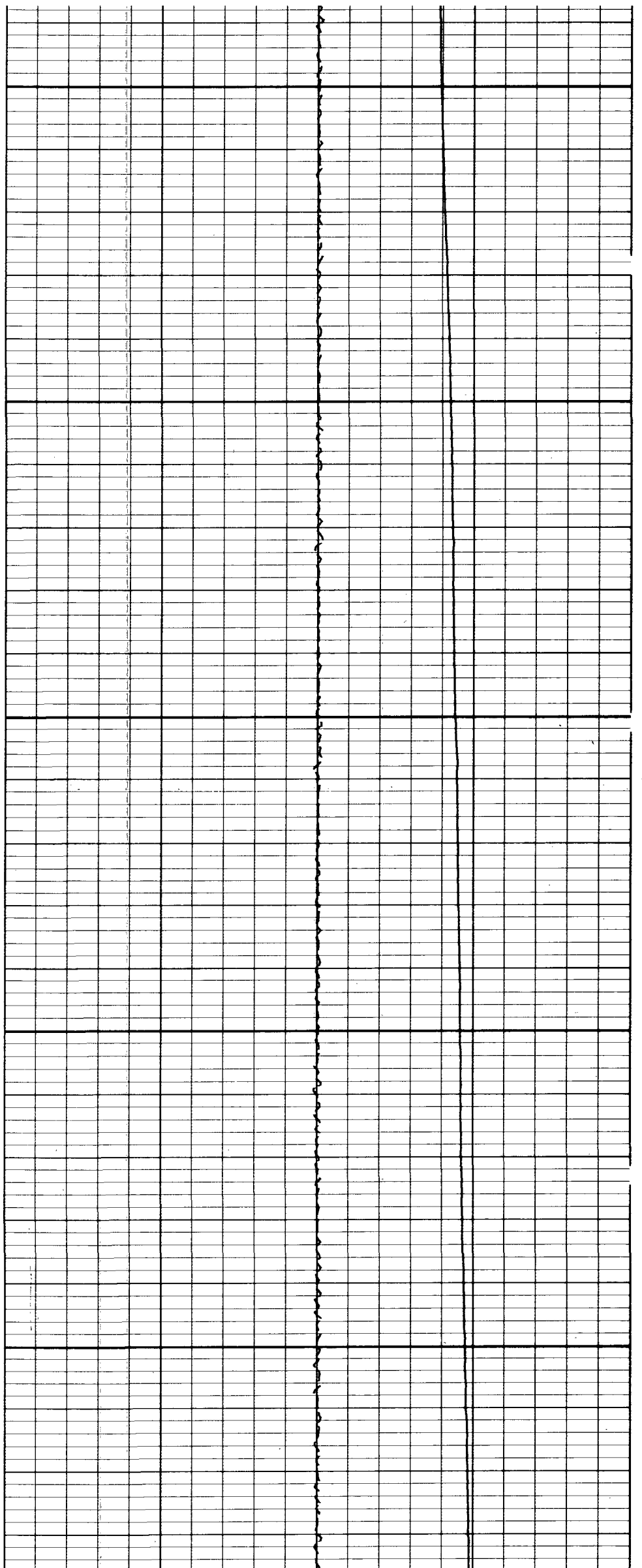
300

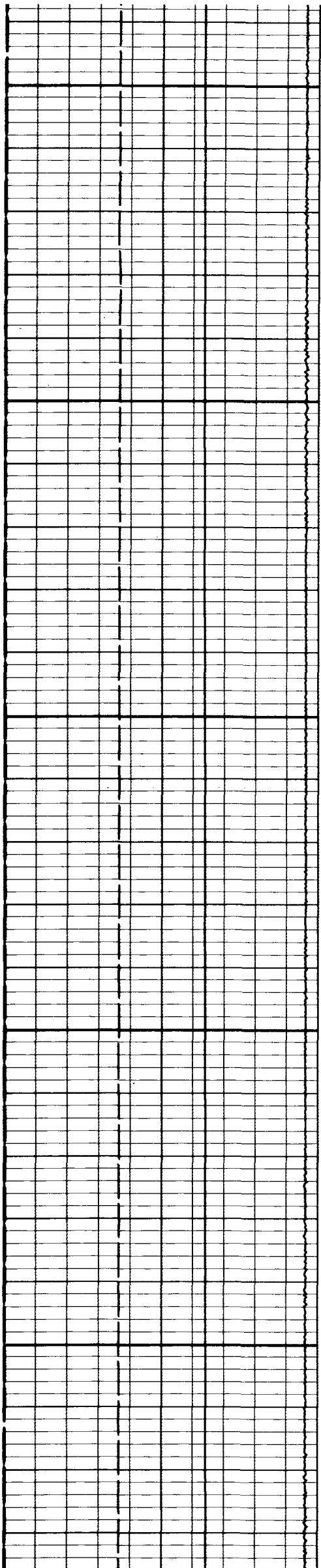
400



500

600

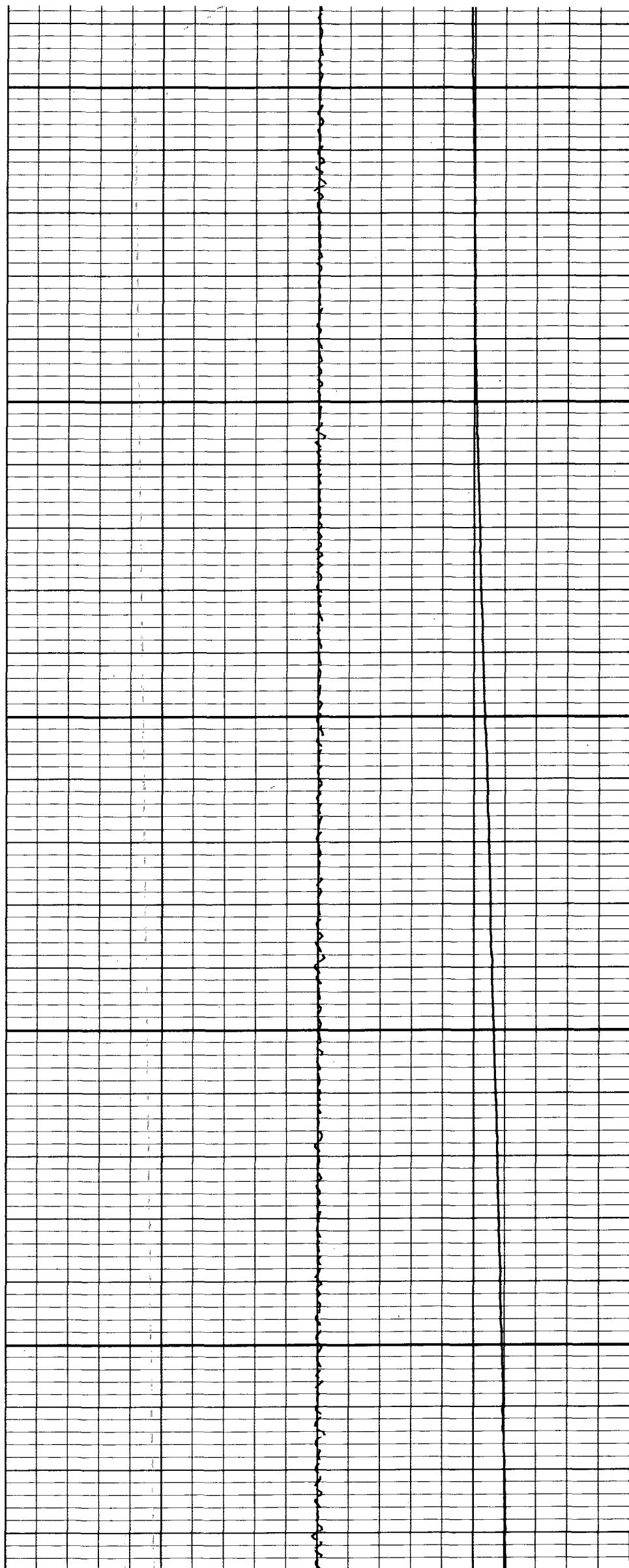


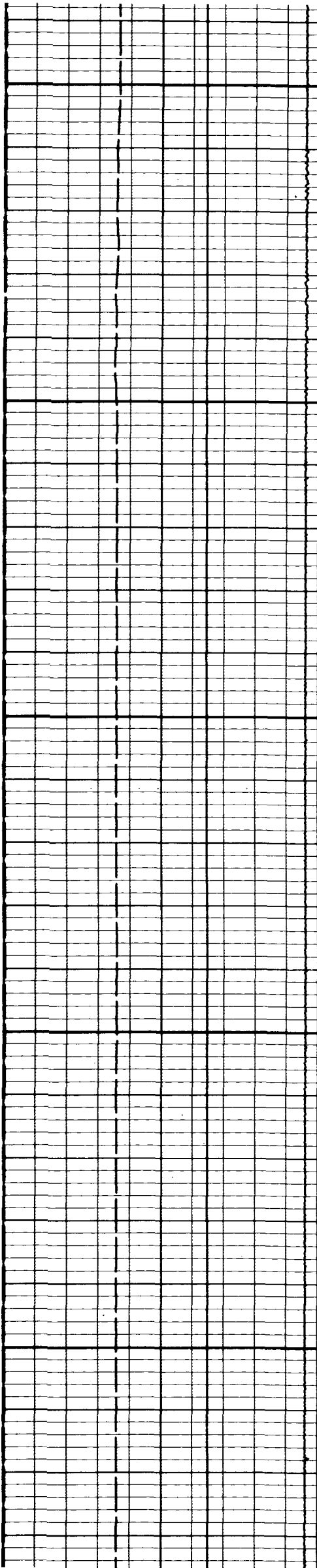


700

800

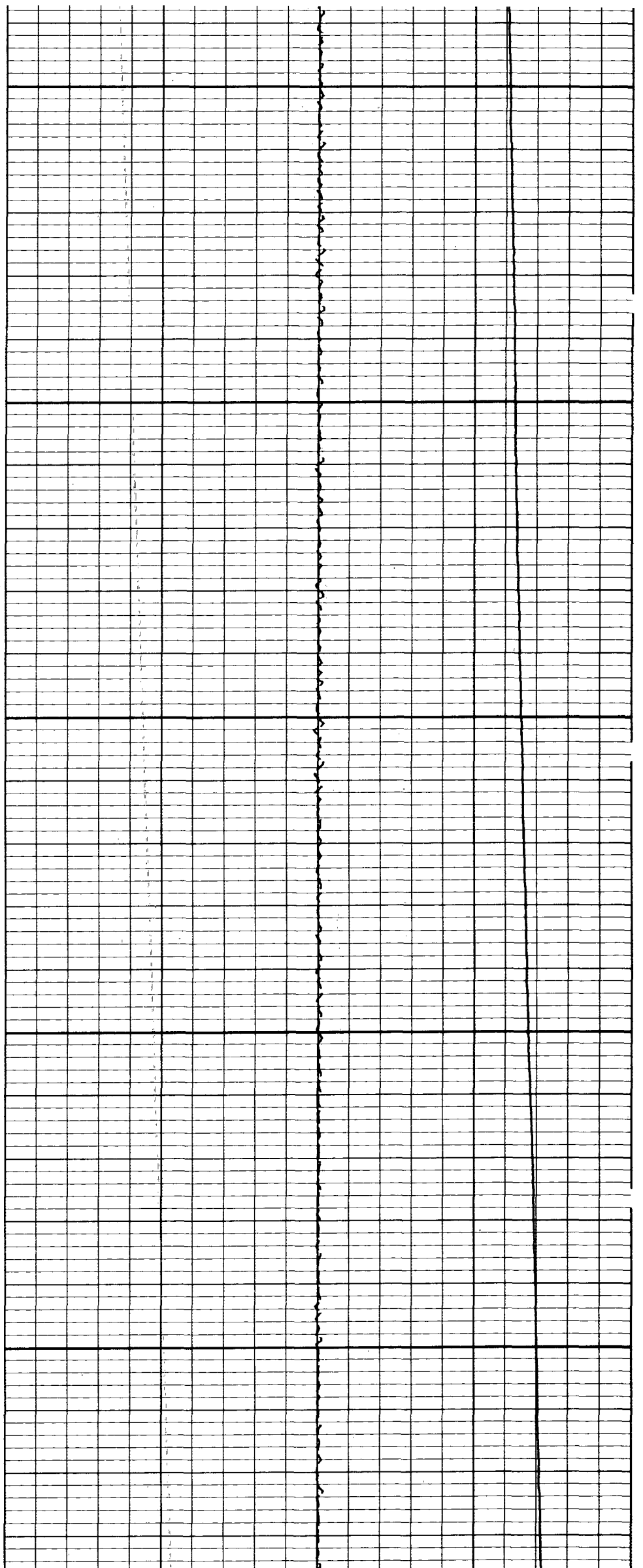
900





1000

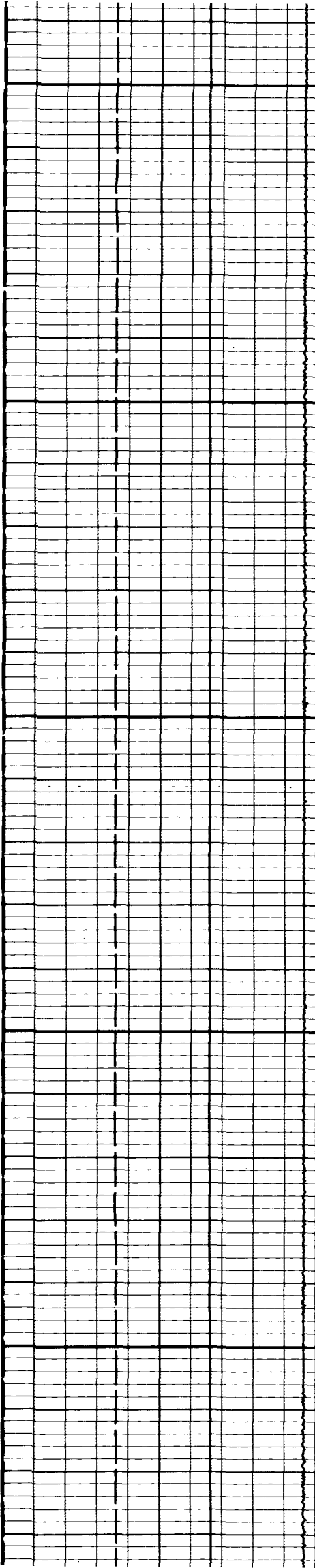
1100



1200

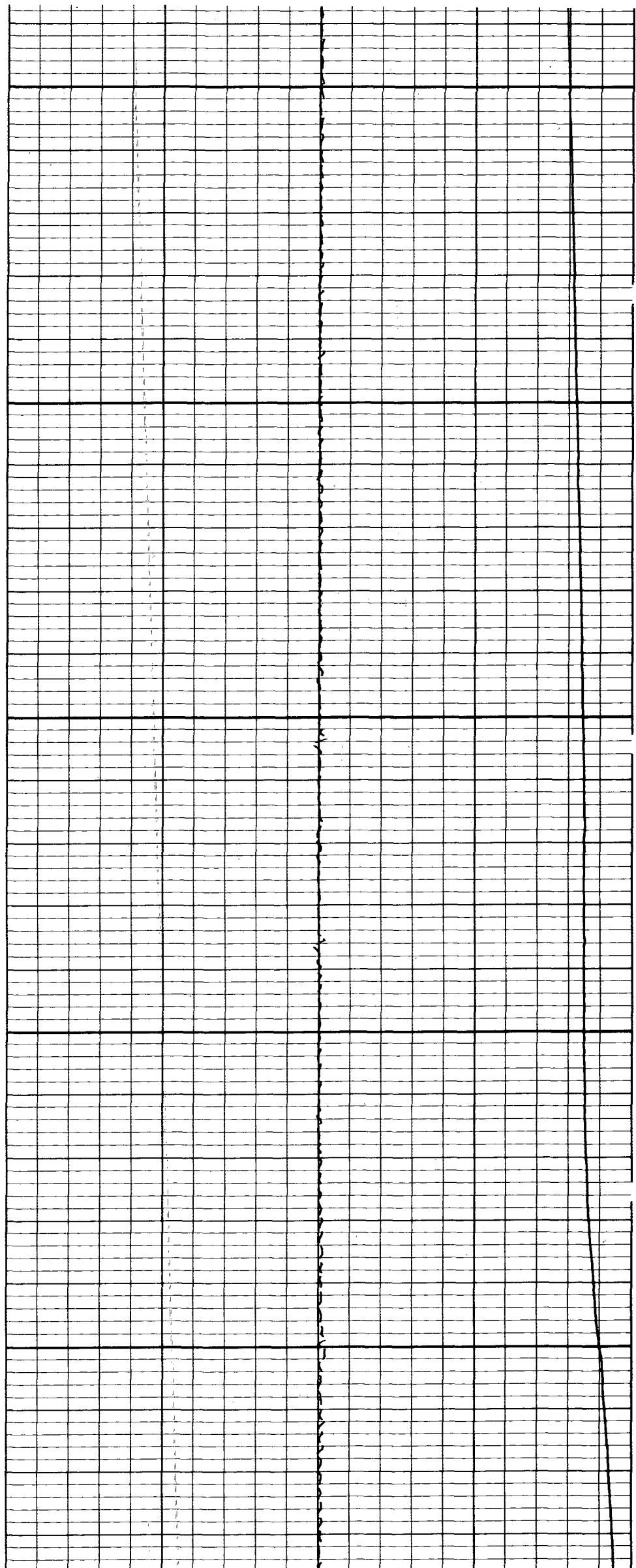
1300

1400



1500

1600

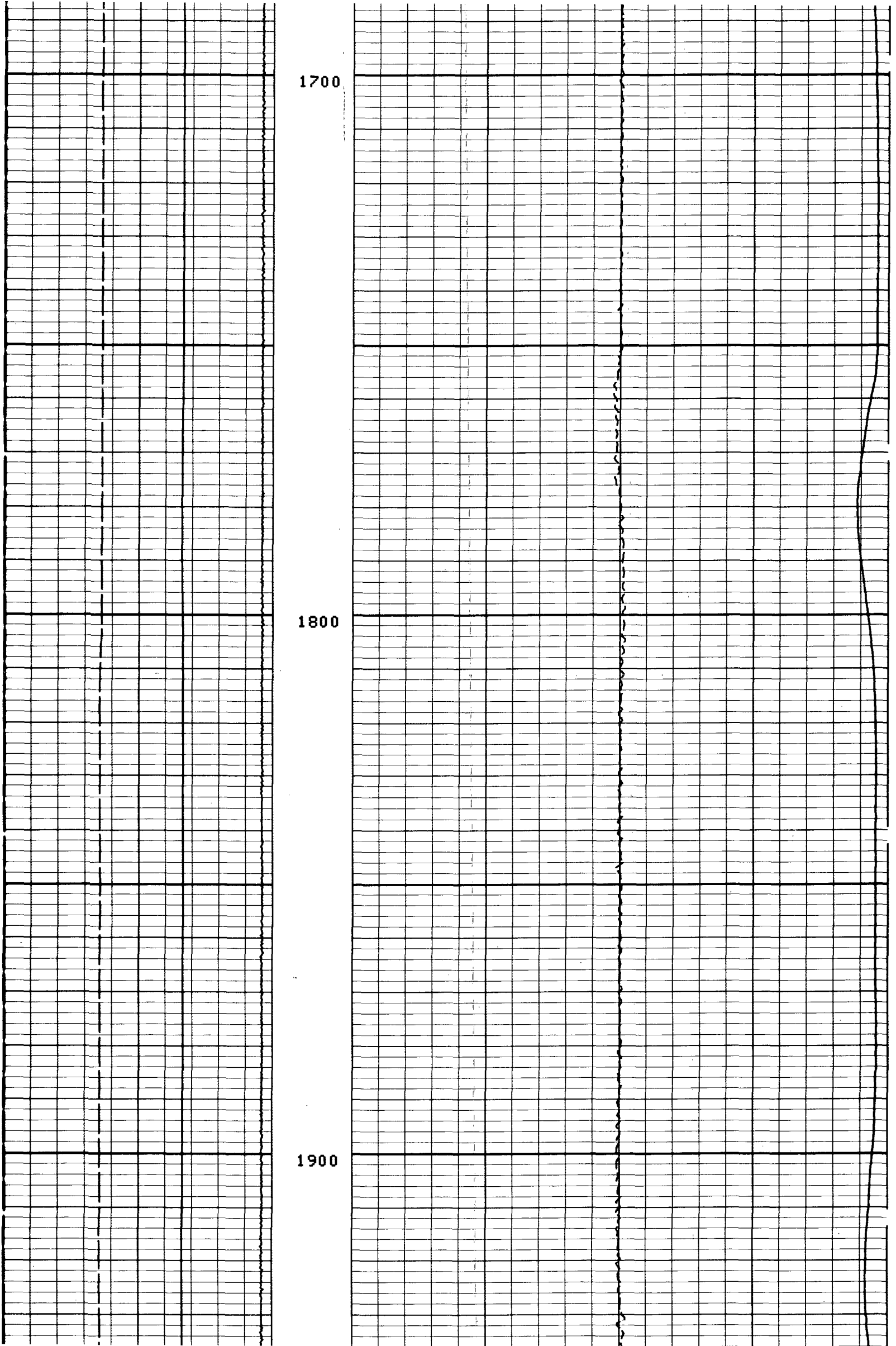




1700

1800

1900



80°F

90°F

100°F

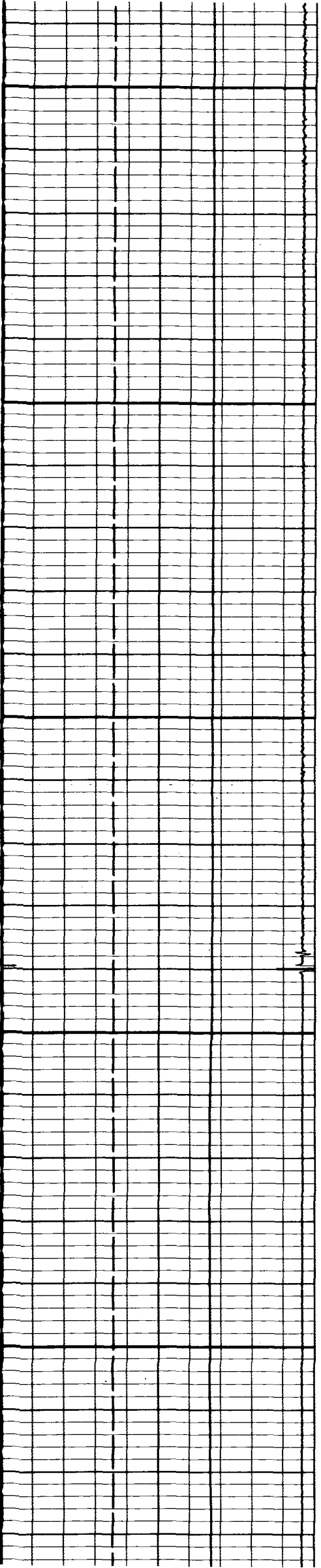
2000

2100

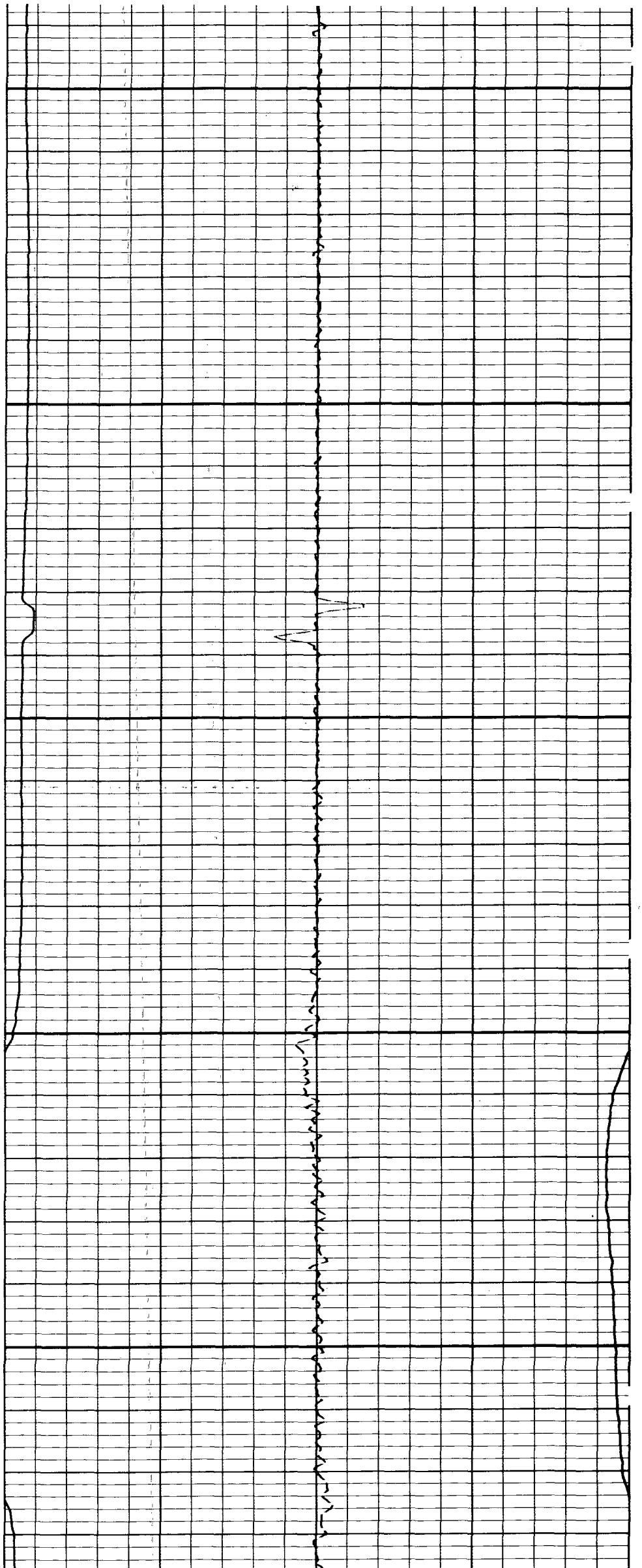
100°F

110°F

120°F

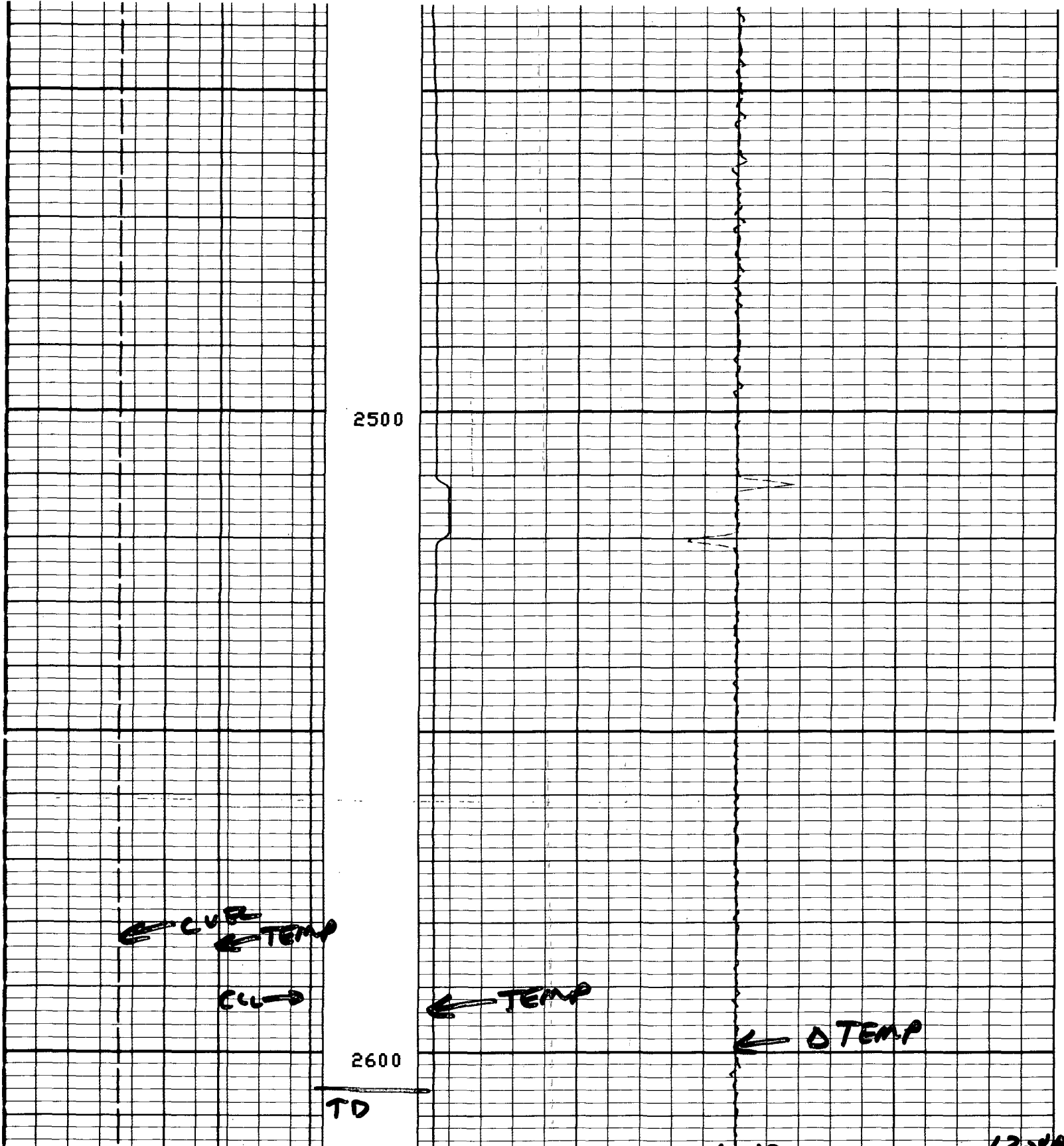


2200



2300

2400



CP 27.772

FILE 5 01-DEC-87 19:08  
 DATA ACQUIRED 01-DEC-87 01:23

0.0	-200.0	-1.000	1.0000
	CVEL(F/MN)		DTEM(DF/F)
0.0	200.00	60.000	80.000
	CVEL(F/MN)		TEMP(DEGF)
-19.00	1.0000		
	CCL		
0.0	150.00		
	TEMP(DEGF)		