



YOUNGQUIST
BROTHERS, Inc

GEOPHYSICAL LOGGING DIVISION

TEMPERATURE SURVEY
 OCT 22 2002

DEEP - SOUTH DEEPS

Company N. FORT MYERS UTILITIES
 Well IW-1
 Field N. FT. MYERS
 County LEE
 State FL

Company NORTH FORT MYERS UTILITIES
 Well IW-1
 Field N. FT. MYERS
 County LEE
 State FLORIDA

Location
 Permanent Datum PAD
 Log Measured From PAD
 Drilling Measured From
 Elevation
 Other Services
 RTS
 Elevation
 K.B.
 D.F.
 G.L.

Date 3-OCT-02
 Run Number MIT
 Depth Driller 2600'
 Depth Logger 2544'
 Bottom Logged Interval 2544'
 Top Log Interval SURFACE
 Open Hole Size 12"
 Type Fluid WATER
 Density / Viscosity NA
 Max. Recorded Temp. 95.8 DEGF
 Estimated Cement Top NA
 Time Well Ready ON ARRIVAL
 Time Logger on Bottom 0800
 Equipment Number 103
 Location FT MYERS
 DENISON
 D. HOFFMAN
 Recorded By
 Witnessed By

Borehole Record		Borehole Record	
Run Number	Bit	Run Number	To
12"	1582'	2600'	

Borehole Record		Borehole Record	
Run Number	Bit	Run Number	To
13 3/8"	1582'	2600'	

<<< Fold Here >>>

All interpretations are opinions based on inferences from electrical or other measurements and we cannot and do not guarantee the accuracy or correctness of any interpretation, and we shall not, except in the case of gross or willful negligence on our part, be liable or responsible for any loss, costs, damages, or expenses incurred or sustained by anyone resulting from any interpretation made by any of our officers, agents or employees. These interpretations are also subject to our general terms and conditions set out in our current Price Schedule.

Comments



TEMPERATURE SURVEY

Database File: nftmyers.db
 Dataset Pathname: pass1
 Presentation Format: temp.prs
 Dataset Creation: Thu Oct 03 07:18:43 2002 by Log VER_5.4

Entered by:

Depth in Feet scaled 1:240

Delta Temperature (degF) 1

80

TEMPERATURE (degF)

100

50

100

150

200

85.6

85.6

85.6

85.5

85.6

85.7

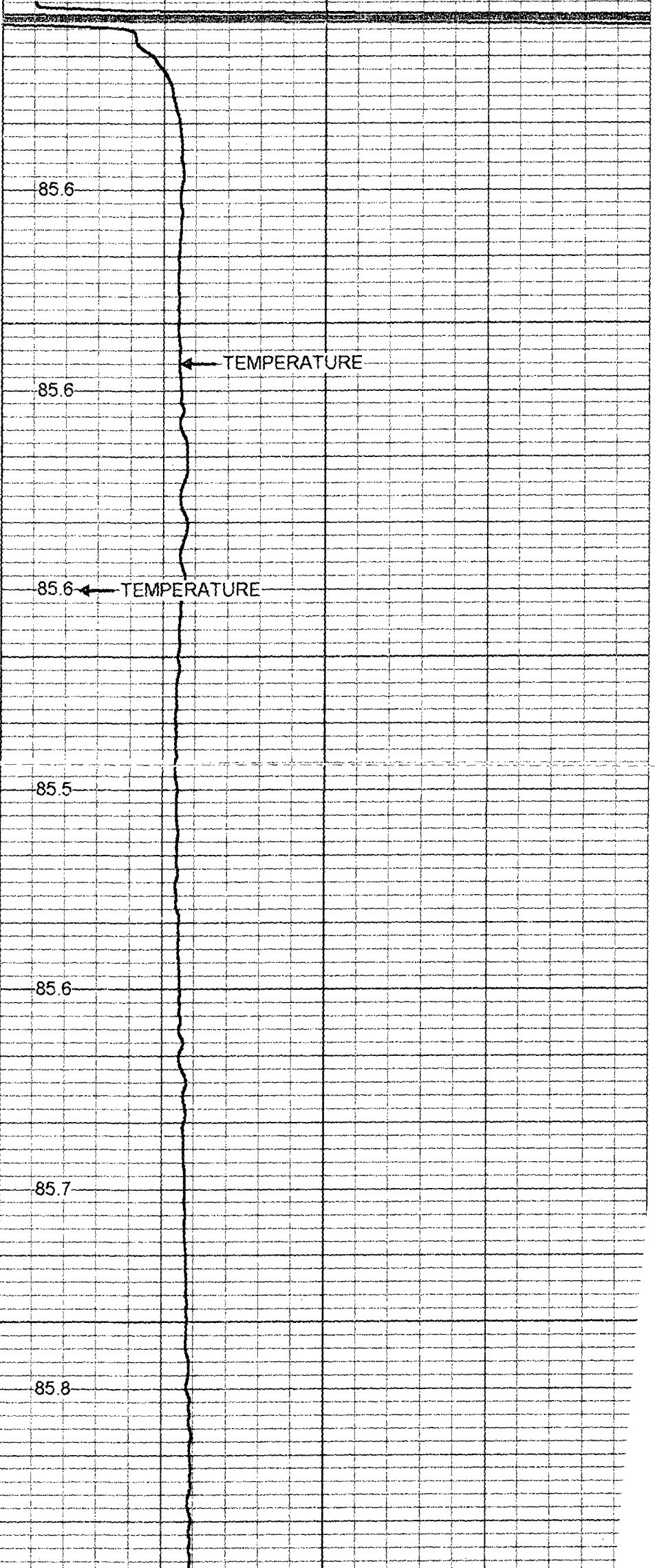
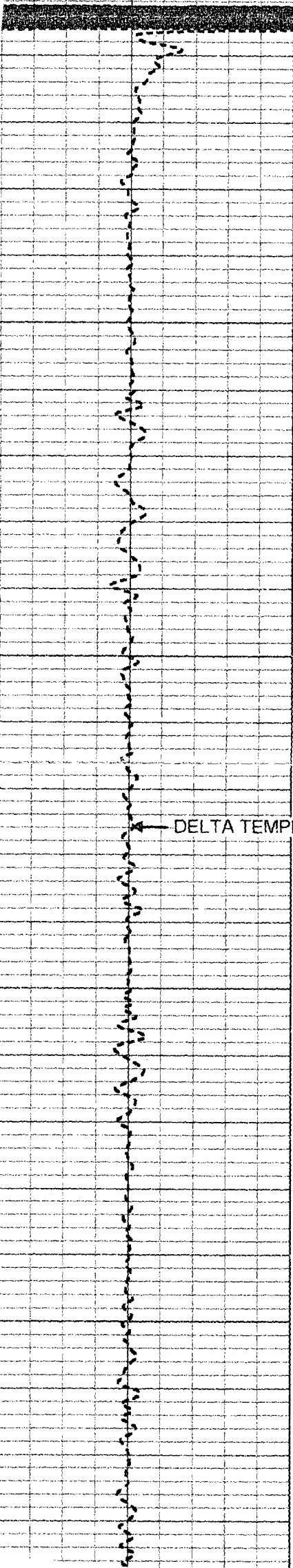
85.8

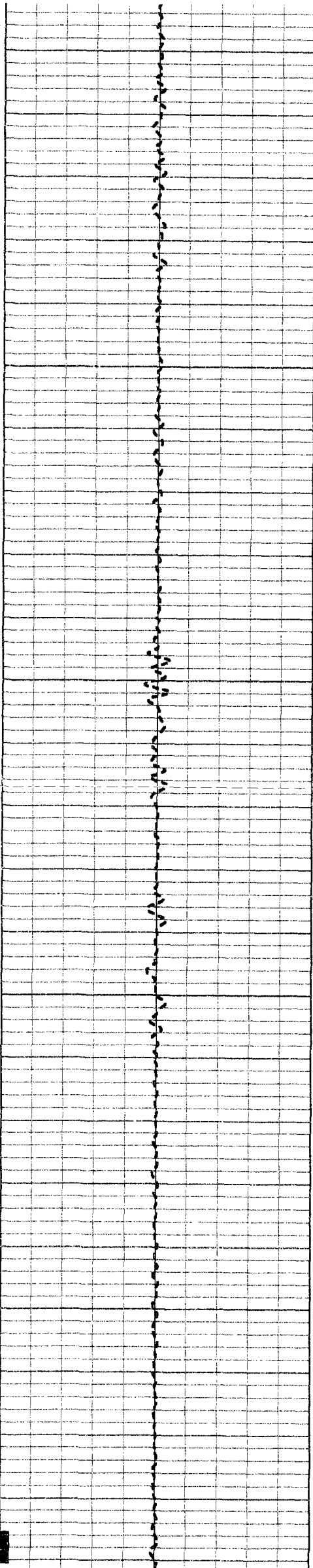
85.9

← TEMPERATURE

← TEMPERATURE

← DELTA TEMPERATURE





250

86.1

300

86.1

86.2

350

86.3

86.4

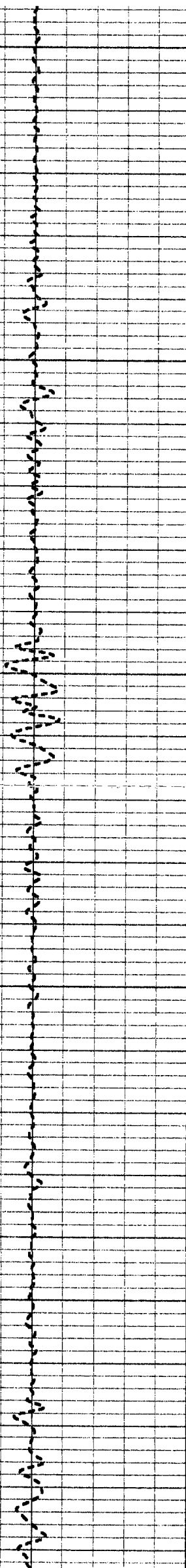
400

86.5

450

86.6

86.6



500

86.7

86.8

550

86.8

600

86.7

87.0

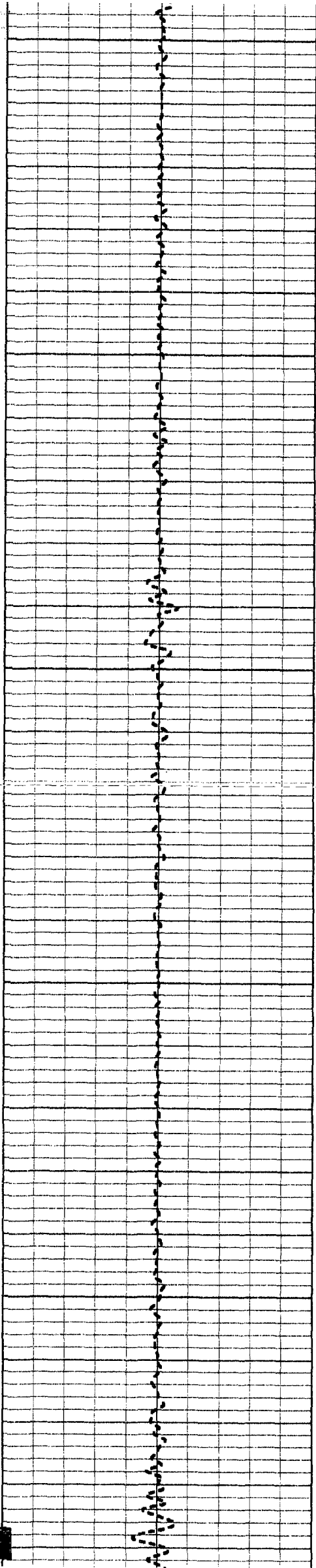
650

87.0

87.1

700

87.0



750

800

850

900

950

87.2

87.2

87.3

87.3

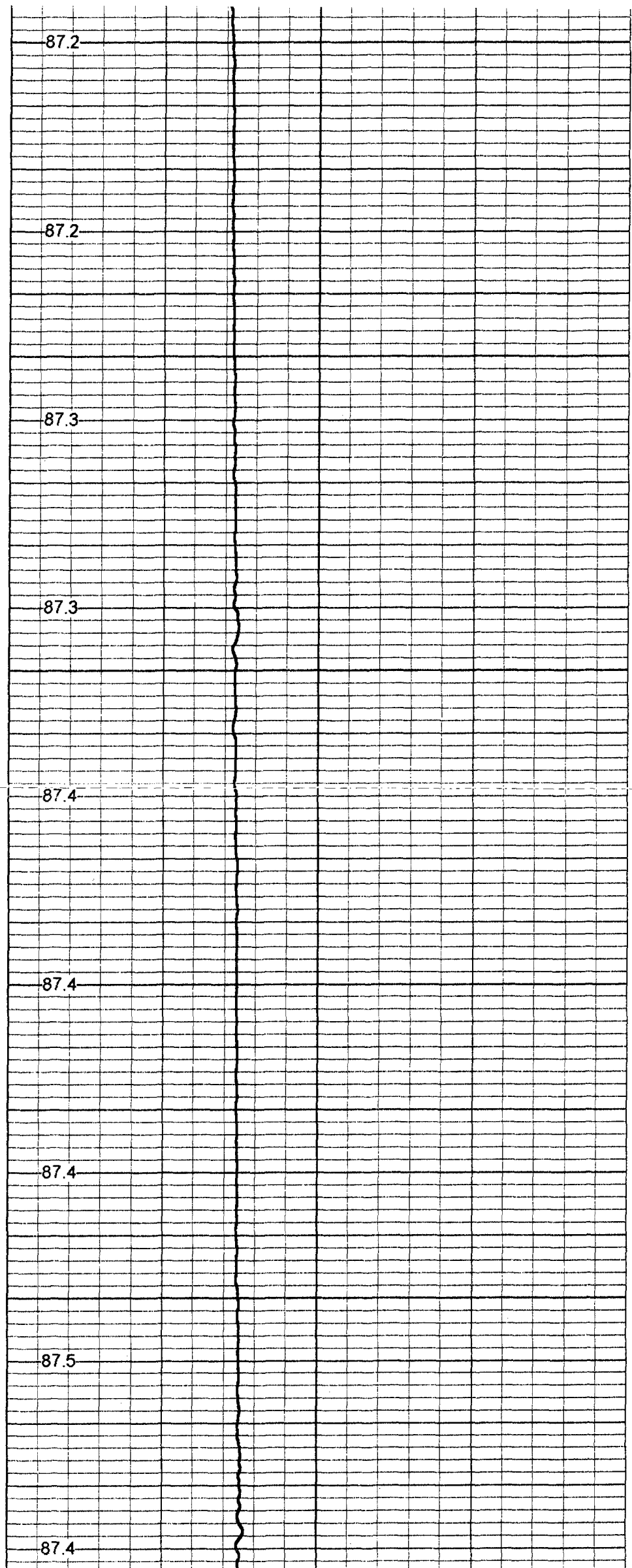
87.4

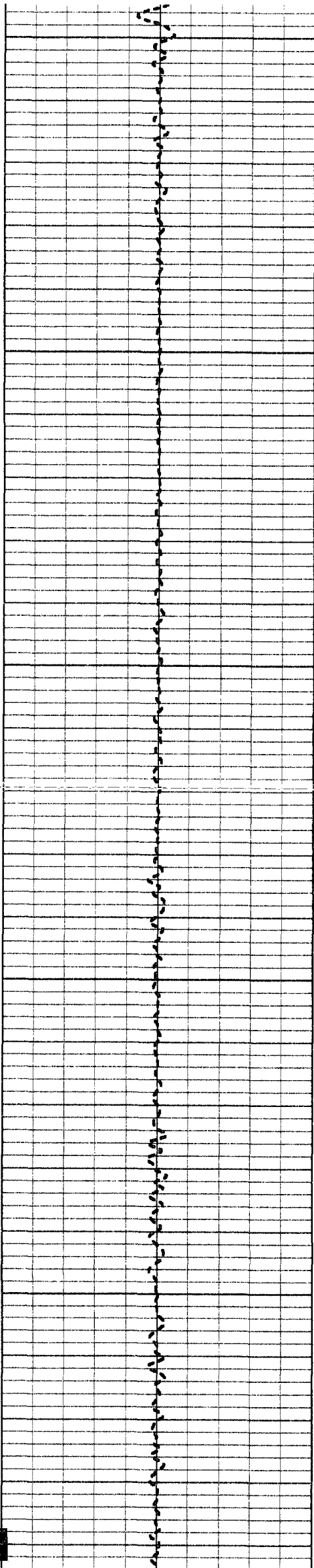
87.4

87.4

87.5

87.4





1000

1050

1100

1150

1200

87.6

87.6

87.6

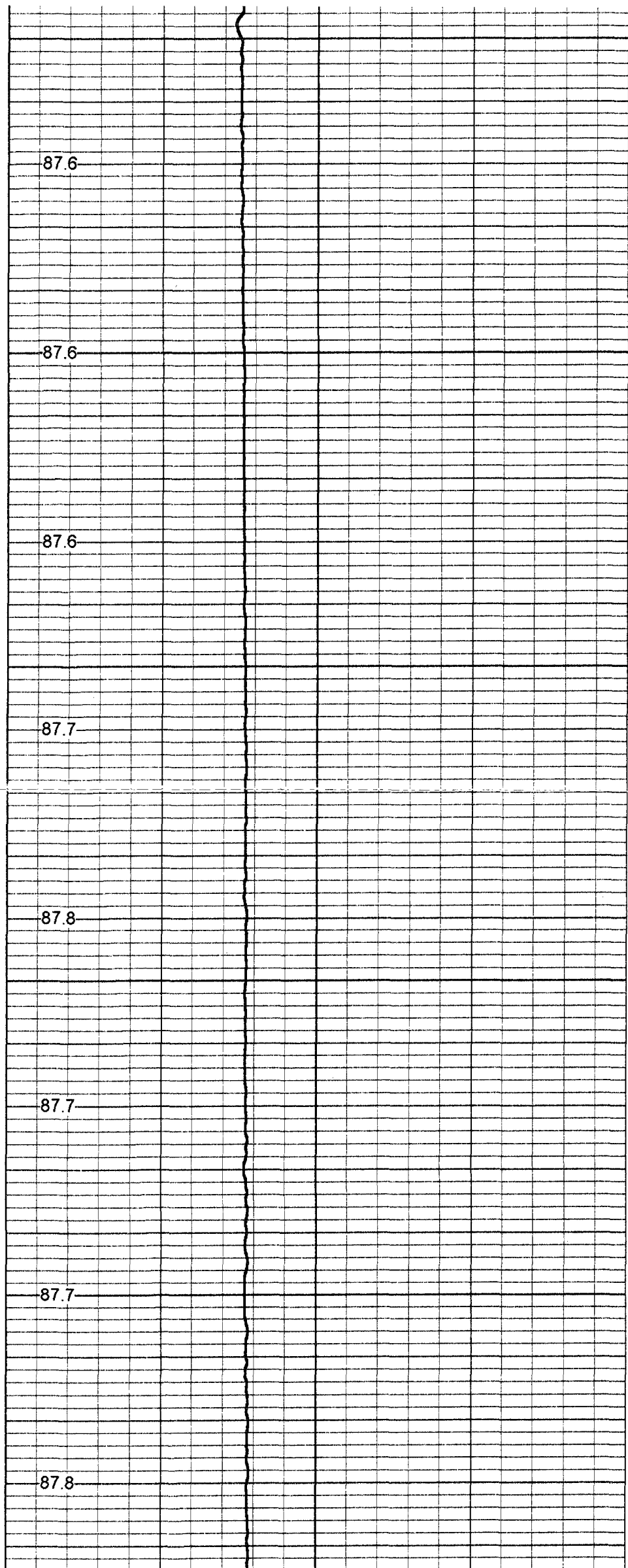
87.7

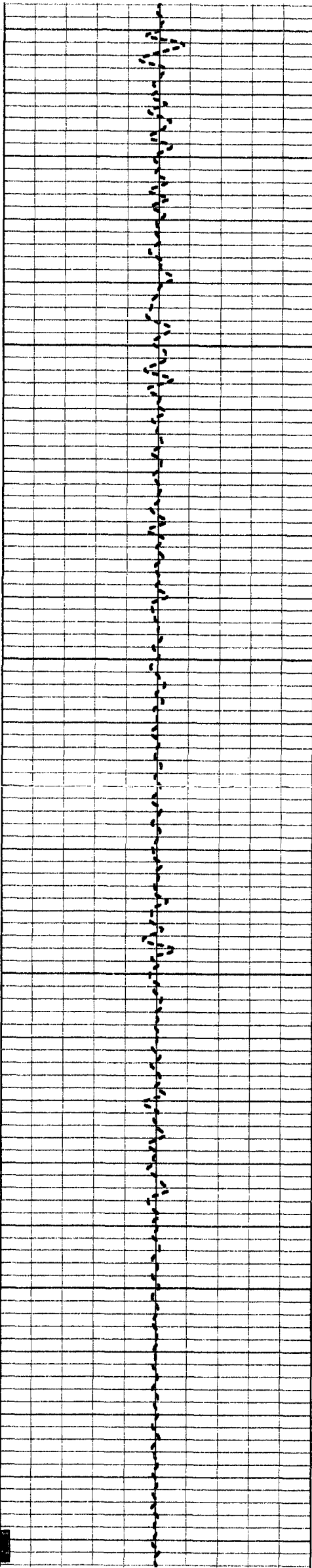
87.8

87.7

87.7

87.8





1250

87.8

1300

88.0

1350

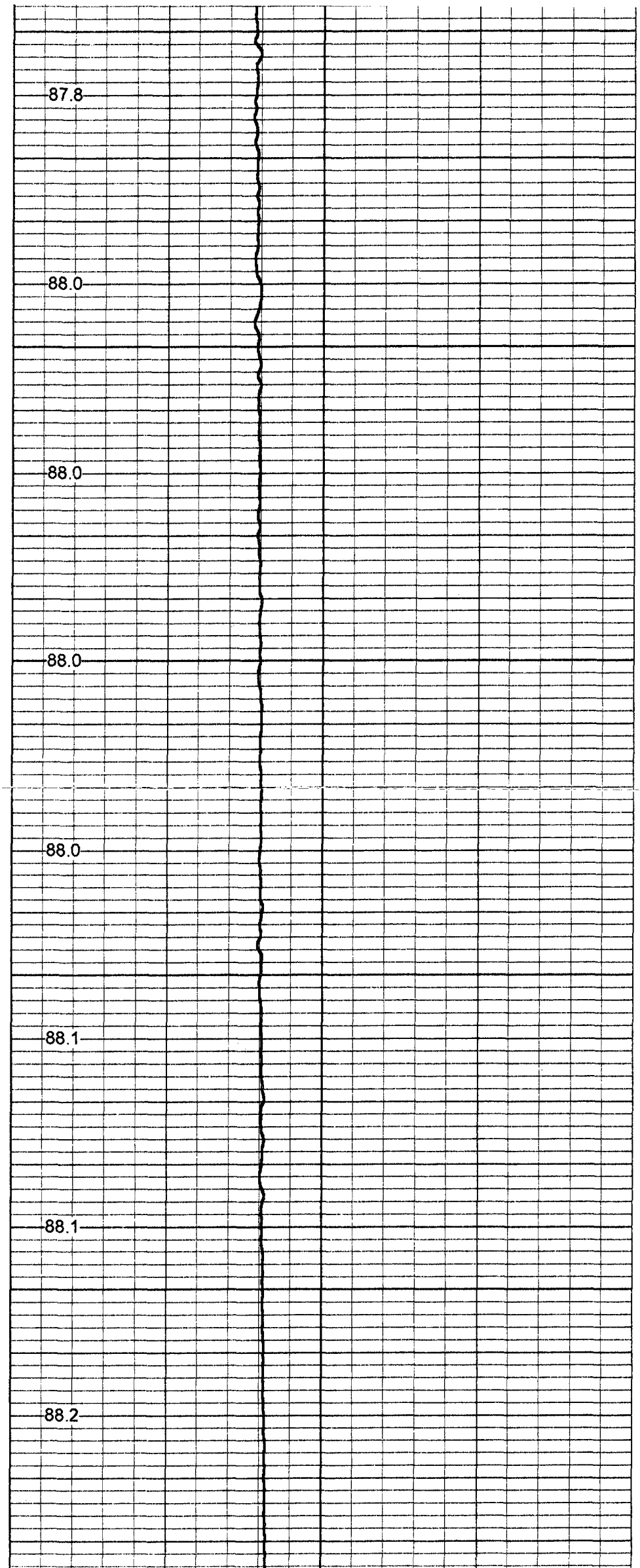
88.0

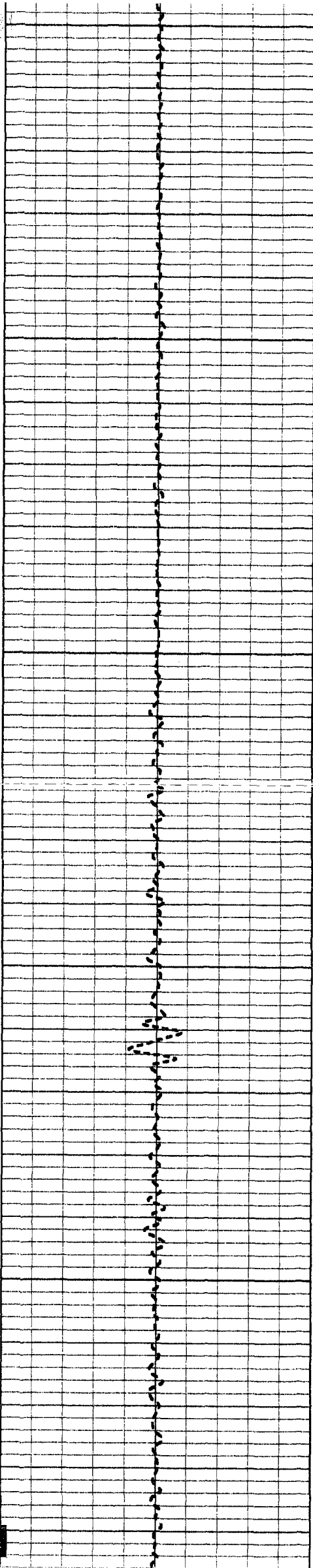
1400

88.1

1450

88.2





1500

1550

1600

1650

1700

88.2

88.2

88.3

88.3

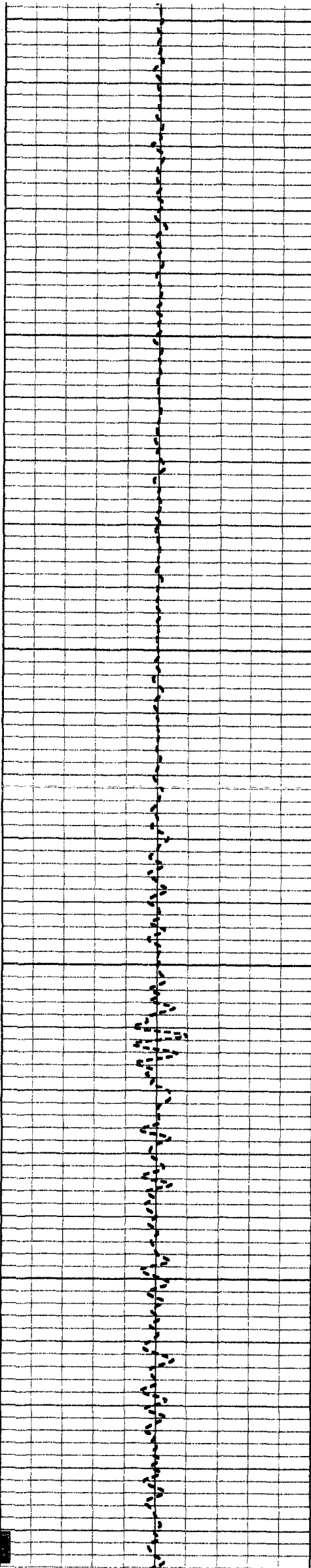
88.3

88.3

88.4

88.4

88.6



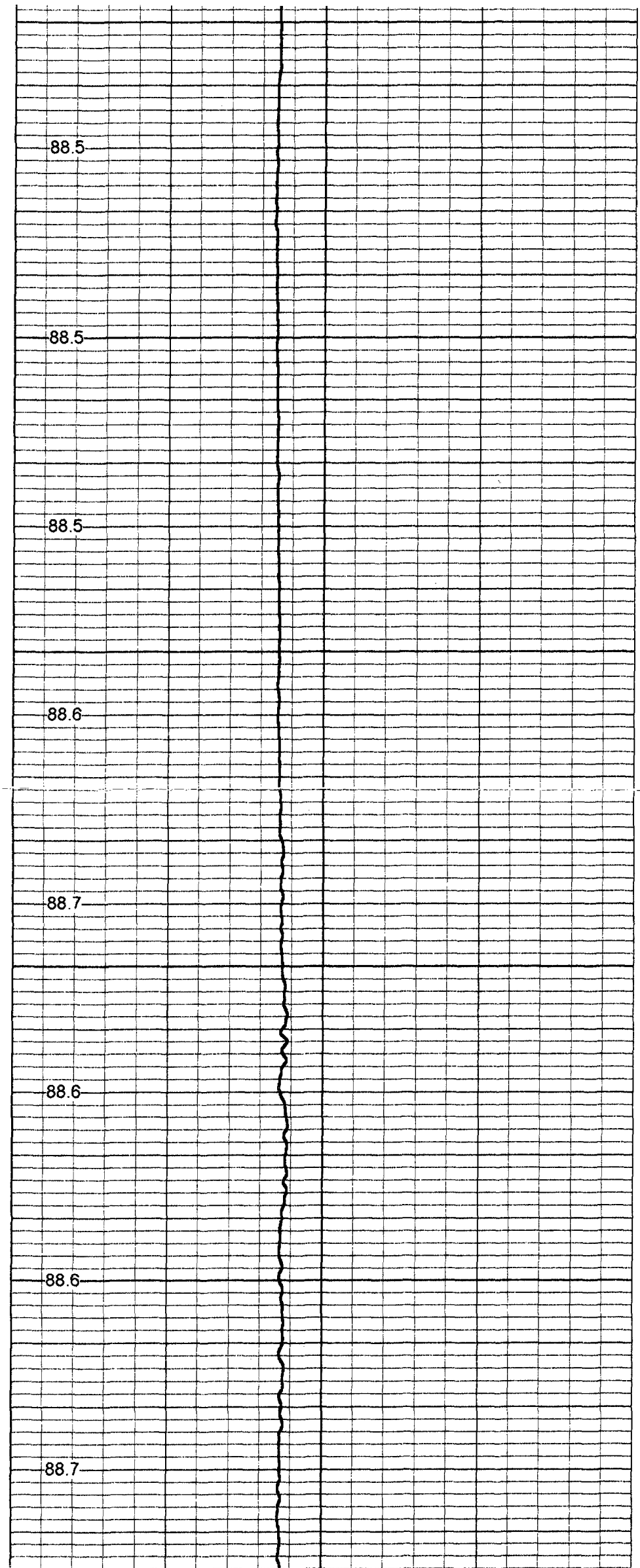
1750

1800

1850

1900

1950



88.5

88.5

88.5

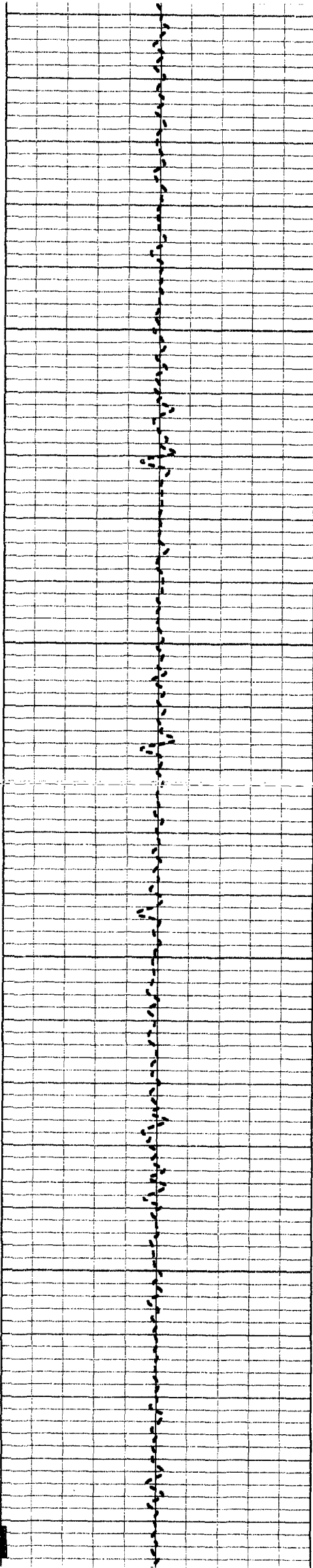
88.6

88.7

88.6

88.6

88.7



2000

88.6

88.6

2050

88.9

2100

89.2

89.6

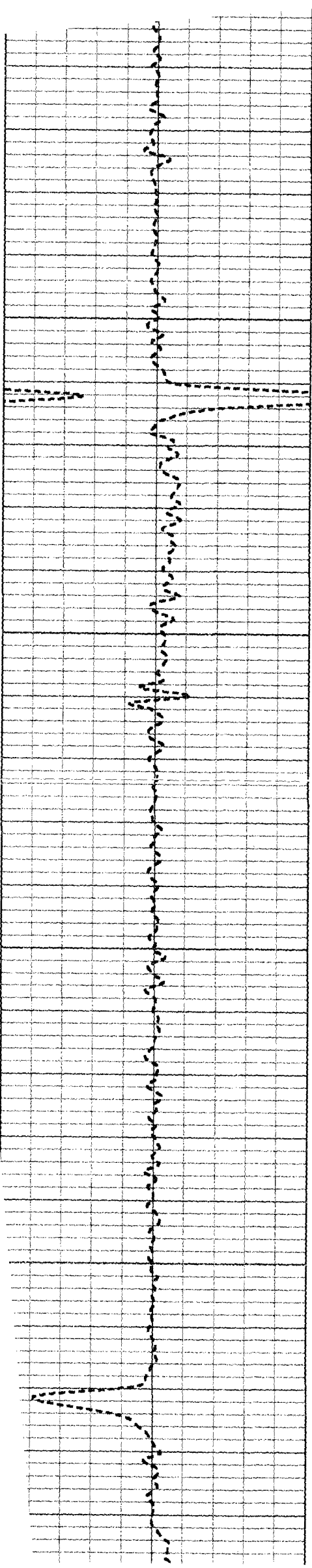
2150

89.1

88.7

2200

88.6



2250

2300

2350

2400

2450

88.5

88.3

88.1

94.3

95.4

95.5

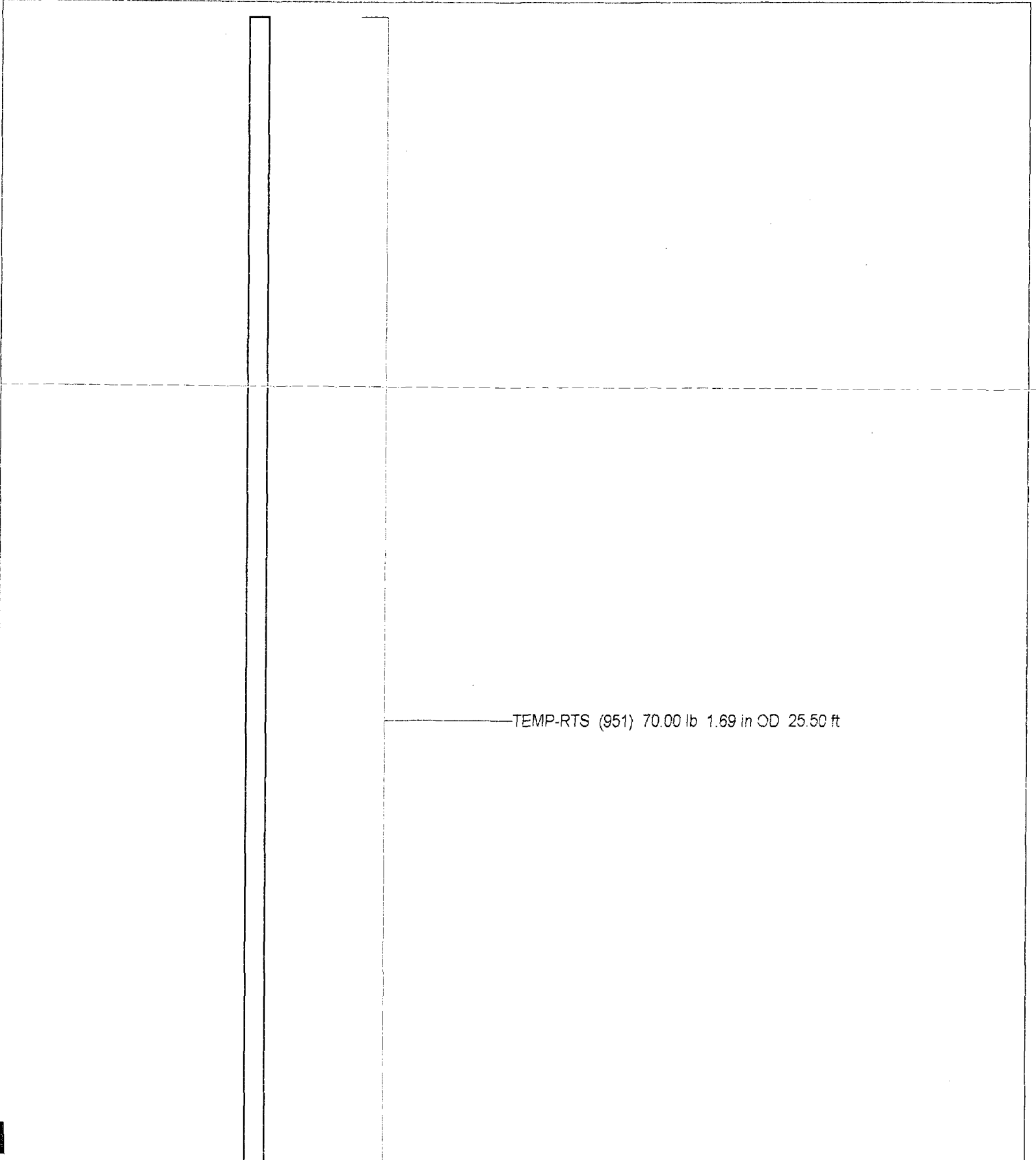
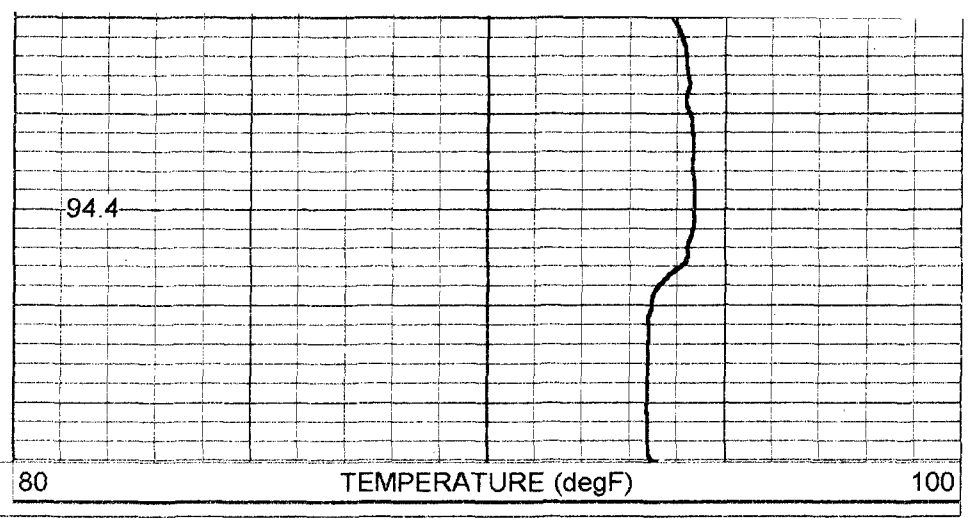
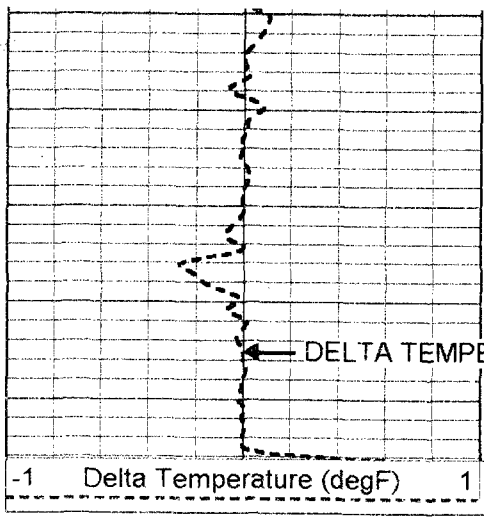
95.7

95.8

93.2

← TEMPERATURE

TEMPERATURE →



TEMP 0.10 ft

Dataset: run1/pass1
Total Length: 25.50 ft
Total Weight: 70.00 lb
O.D. 1.69 in

Temperature Calibration Report

Serial Number: 951
Tool Model: RTS
Performed: Wed Feb 28 14:27:36 2001

Point #	Reading		Reference	
1	338.011	cps	34	degF
2	789.31	cps	78	degF
3	1553.28	cps	152	degF