



FLUID CONDUCTIVITY TEMPERATURE LOG

Company LEE COUNTY UTILITIES
 Well MW-1
 Field FORT MYERS BEACH
 Country LEE
 State/Prv FLORIDA

Company LEE COUNTY UTILITIES DEPT.
 Well MW-1
 Field FORT MYERS BEACH WWTP
 Country LEE
 State/Prv FLORIDA

Location
 LAT 26° 29' 30"
 LONG 81° 56' 00"

Permanent Datum GL
 Log Measured From PAD
 Drilling Measured From PAD

Elevation 7'
 Other Services SEE COMMENTS
 Elevation K.B. N/A
 D.F. 13'
 G.L. 7'

Date	21-MAY-98	Run Number	THREE
Depth Driller	1193'	Depth Logger	1193'
Bottom Logged Interval	1185'	Top Log Interval	350'
Open Hole Size	12.25"	Type Fluid	MUD & WATER
Density / Viscosity	N/A	Max. Recorded Temp.	85.1°F
Estimated Cement Top	N/A	Time Well Ready	15.45
Time Logger on Bottom	16.15	Equipment Number	103
Location	FORT MYERS	Recorded By	P. McHUGH
Witnessed By	M. BEAVERSON		

Borehole Record		Tubing Record					
Run Number	Bit	From	To	Size	Weight	From	To
ONE	12 1/4"	SURFACE	410'				
TWO	29"	SURFACE	405'				
THREE	12.25"	400'	1193'	24"		SURFACE	400'

Casing Record		Top		Bottom	
Surface String	Size	Wgt/ft	Top	Bottom	Bottom
Prot. String					
Production String					
Liner					


<<< Fold Here >>>

All interpretations are opinions based on inferences from electrical or other measurements and we cannot and do not guarantee the accuracy or correctness of any interpretation, and we shall not, except in the case of gross or willful negligence on our part, be liable or responsible for any loss, costs, damages, or expenses incurred or sustained by anyone resulting from any interpretation made by any of our officers, agents or employees. These interpretations are also subject to our general terms and conditions set out in our current Price Schedule.

Comments

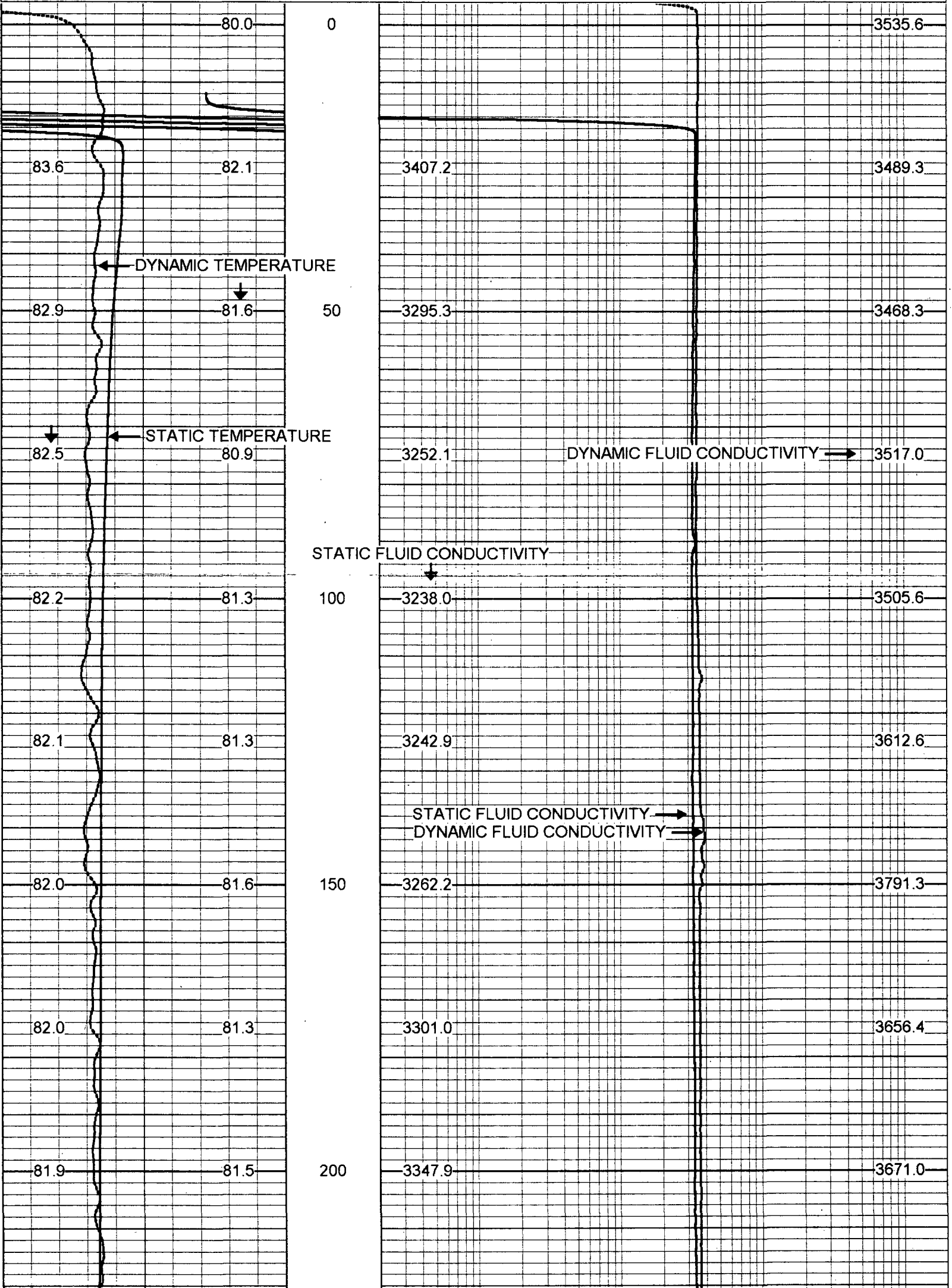
OTHER SERVICES: DIL/LL3/SP, BHC SONIC, FLOWMETER(STATIC & DYNAMIC),
 X-Y CALIPER/GAMMA RAY
 DYNAMIC FLOWRATE: 400 GPM

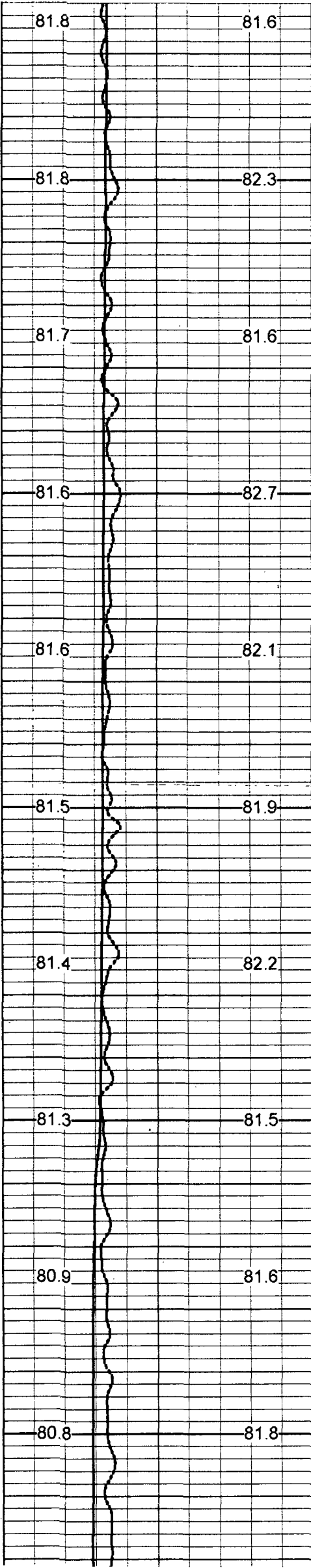
Entered into
OCULUS
 South District




STATIC & DYNAMIC

75	STATIC TEMPERATURE (degF)	95	20	STATIC FLUID CONDUCTIVITY	200000
7	DYNAMIC TEMPERATURE (degF)	5	20	DYNAMIC FLUID CONDUCTIVITY	200000





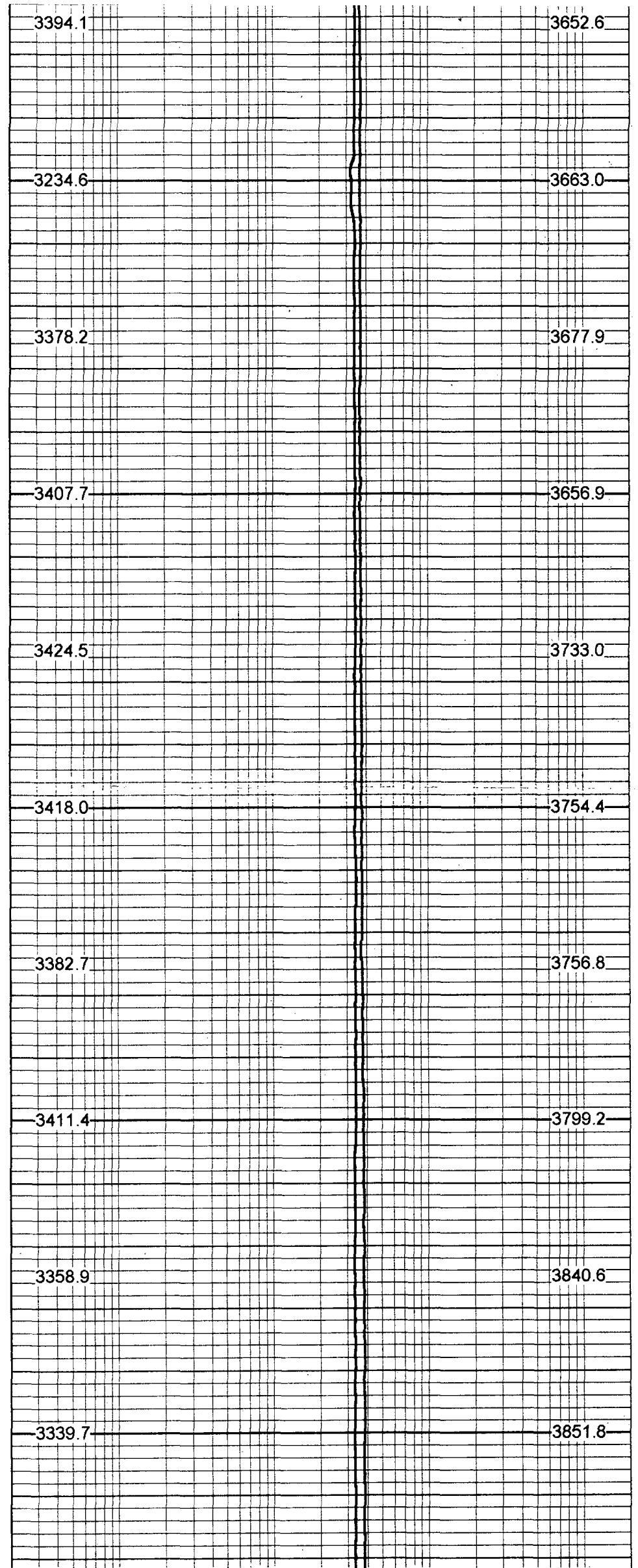
250

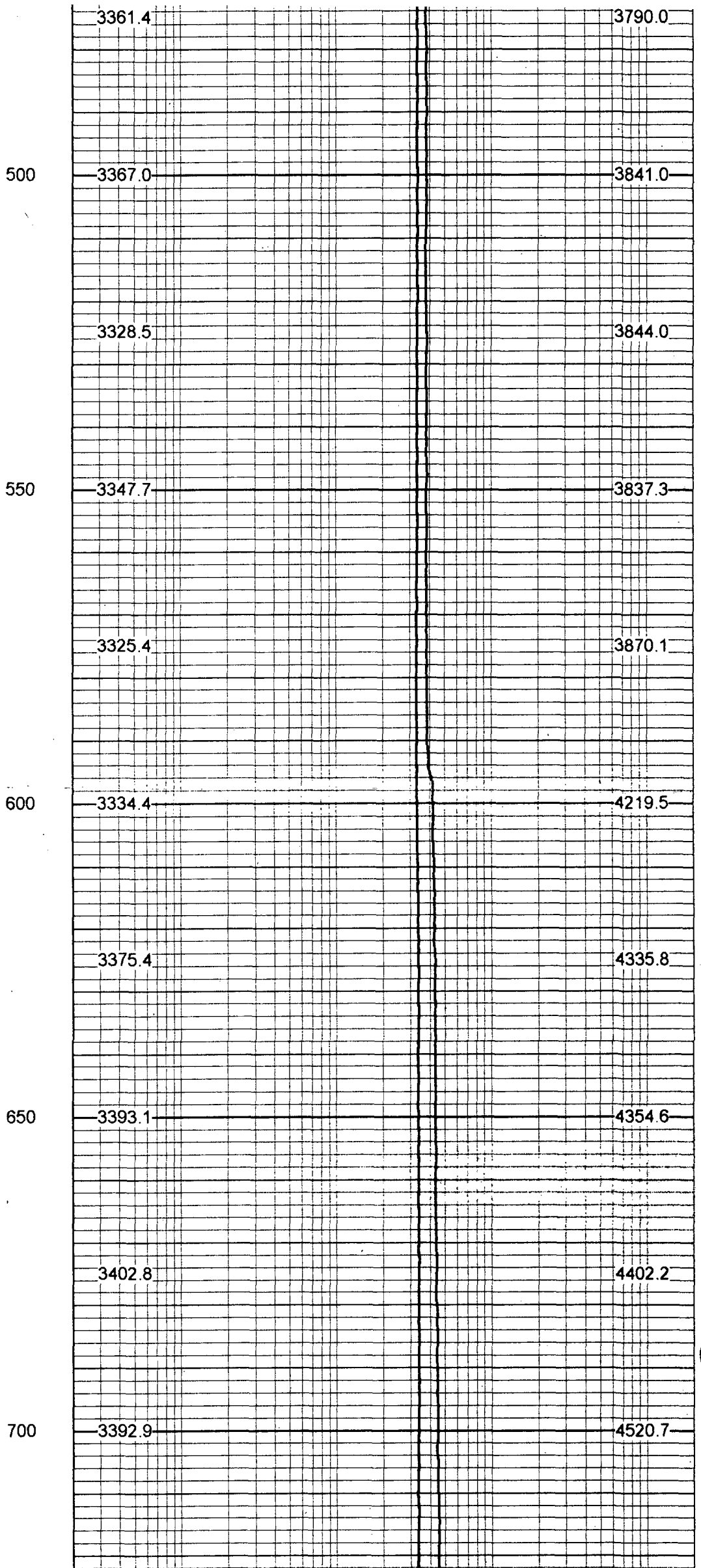
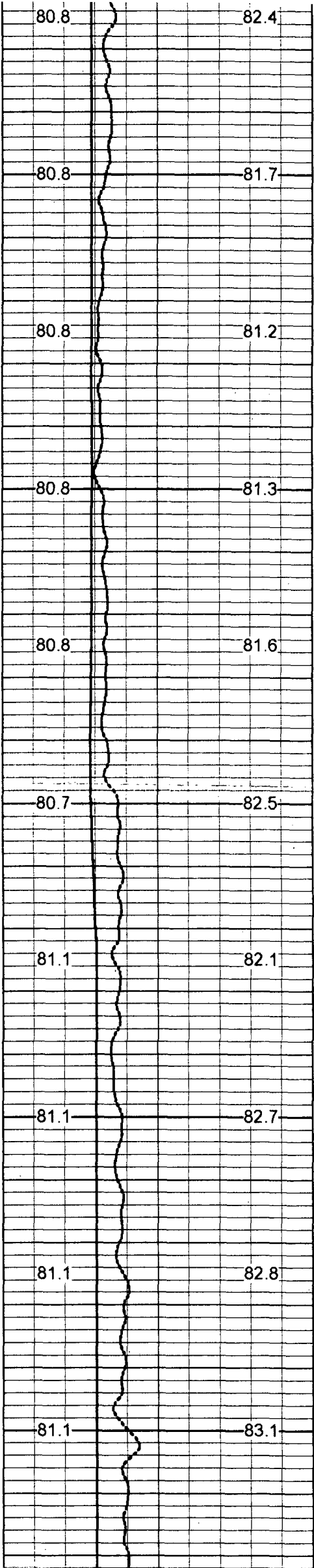
300

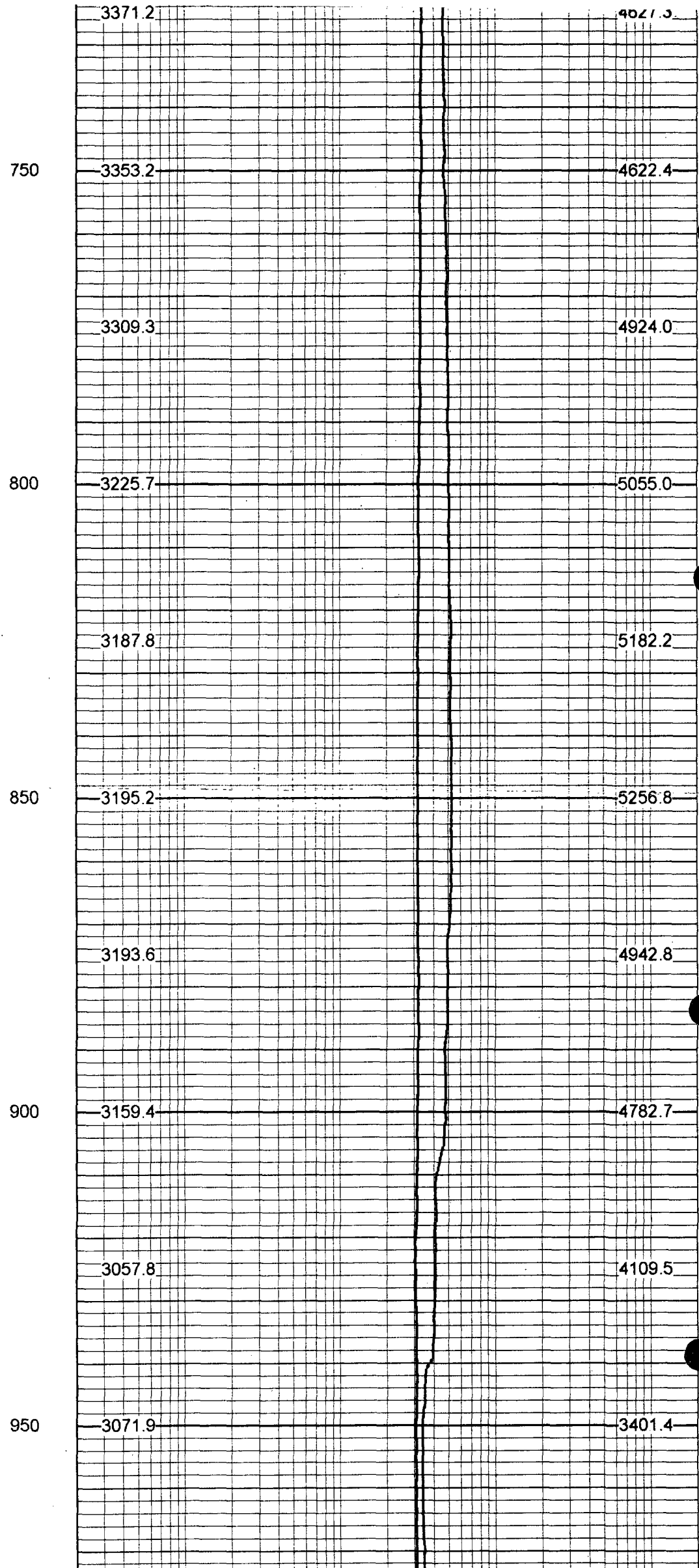
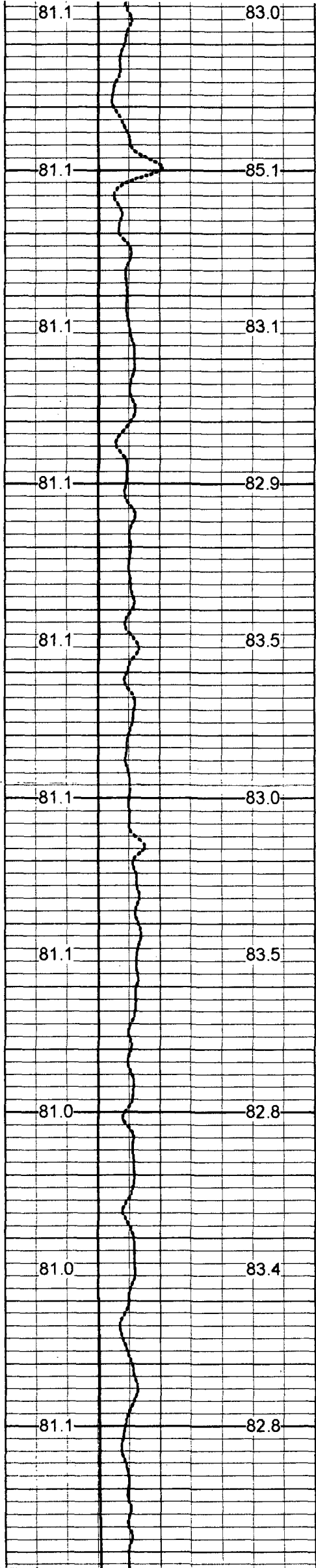
350

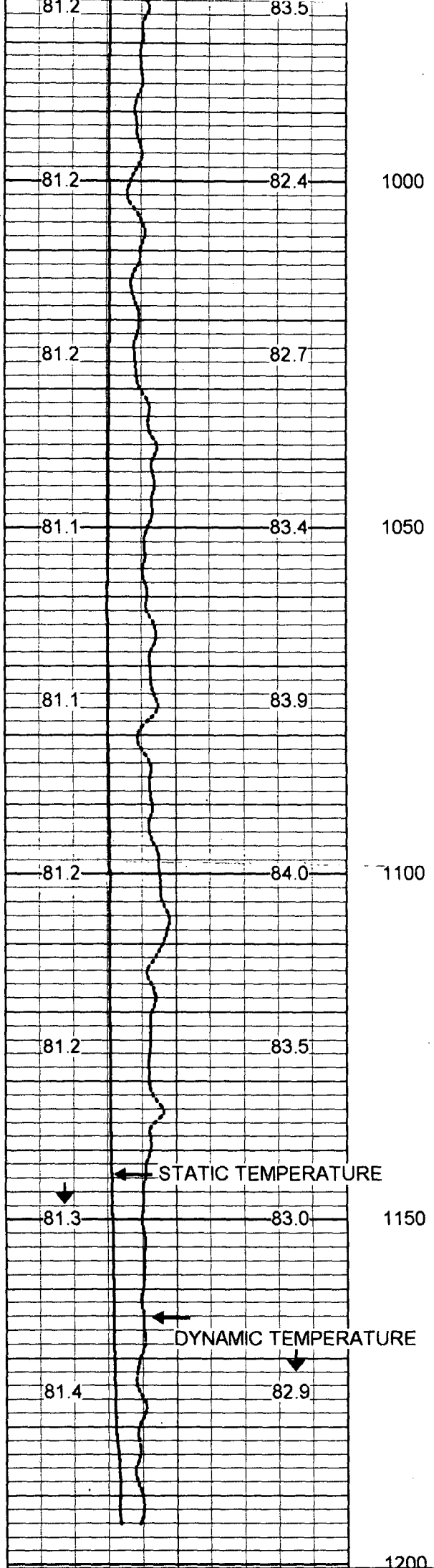
400

450

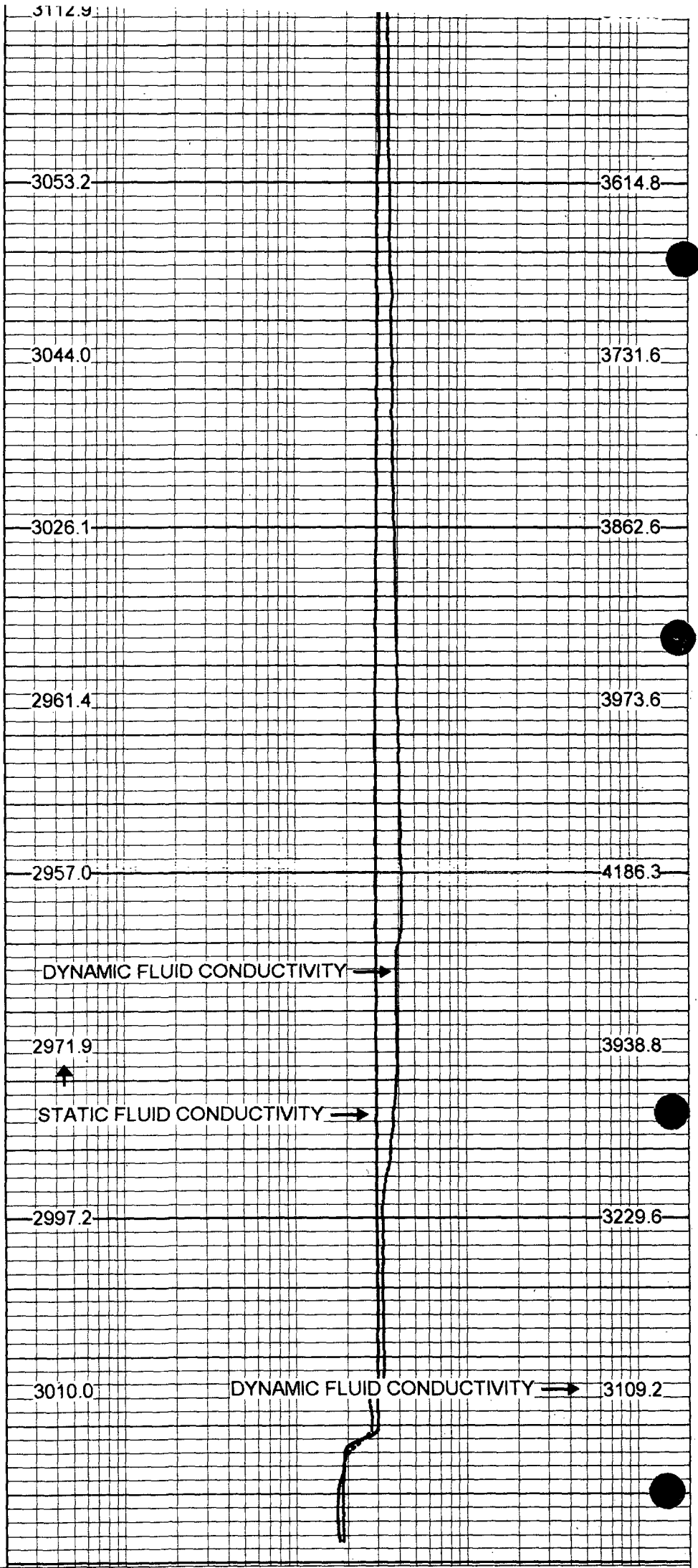








75 STATIC TEMPERATURE (degF) 95
 7 DYNAMIC TEMPERATURE (degF) 5



20 STATIC FLUID CONDUCTIVITY 200000
 20 DYNAMIC FLUID CONDUCTIVITY 200000

TEMP 0.70 ft

FRES 0.50 ft



TEMP-SONDEX (31) 10.00 lb 1.62 in OD 1.20 ft

FRT-SONDEX (31) 10.00 lb 1.69 in OD 0.60 ft

Dataset:	run3/pass25
Total Length:	1.80 ft
Total Weight:	20.00 lb
O.D.	1.69 in