

YOUNGQUIST BROTHERS, Inc
GEOPHYSICAL LOGGING DIVISION

HIGH RESOLUTION TEMPERATURE
REPT DEP SOUTH DIST HOG

2009 JUN 31 P 4:14
CITY OF MARCO ISLAND

Company CITY OF MARCO ISLAND
Well IW-2
Field MARCO ISLAND FIELD
County COLLIER
State FL

Company CITY OF MARCO ISLAND
Well IW-2
Field MARCO ISLAND FIELD
County COLLIER
State FL

Location: API #:
SEC TWP RGE
Permanent Datum Elevation
Log Measured From
Drilling Measured From
Other Services
RTS
Elevation
K.B.
D.F.
G.L.

Date 6-FEB-2009
Run Number INITIAL MIT
Depth Driller 3230'
Depth Logger 3025'
Bottom Logged Interval 3025'
Top Log Interval SURFACE
Open Hole Size 22.5"
Type Fluid WATER
Density / Viscosity NA
Max. Recorded Temp. NA
Estimated Cement Top NA
Time Well Ready 0000
Time Logger on Bottom 0130
Equipment Number 102
Location FT. MYERS
Recorded By CATHEY
Witnessed By K. PROBST

Borehole Record		Borehole Record	
Run Number	Bit From To	Run No.	Bit From To
ONE	58.5" CASING 403'	FIVE	12.25" CASING 3340'
TWO	12.25" CASING 910'	SIX	34.25" CASING 2634'
THREE	46.5" CASING 903'	SEVEN	22.5" CASING 3225'
FOUR	12.25" CASING 2600'		
Casing Record		Top	
Surface String	48" 375 W.T.	SURFACE 399'	
Prot. String	36" 375 W.T.	SURFACE 900'	
Production String	24" 375 W.T.	SURFACE 2638'	
Liner	16" 500" W.T.	SURFACE 2629'	

<< Fold Here >>

All interpretations are opinions based on inferences from electrical or other measurements and we cannot and do not guarantee the accuracy or correctness of any interpretation, and we shall not, except in the case of gross or willful negligence on our part, be liable or responsible for any loss, costs, damages, or expenses incurred or sustained by anyone resulting from any interpretation made by any of our officers, agents or employees. These interpretations are also subject to our general terms and conditions set out in our current Price Schedule.

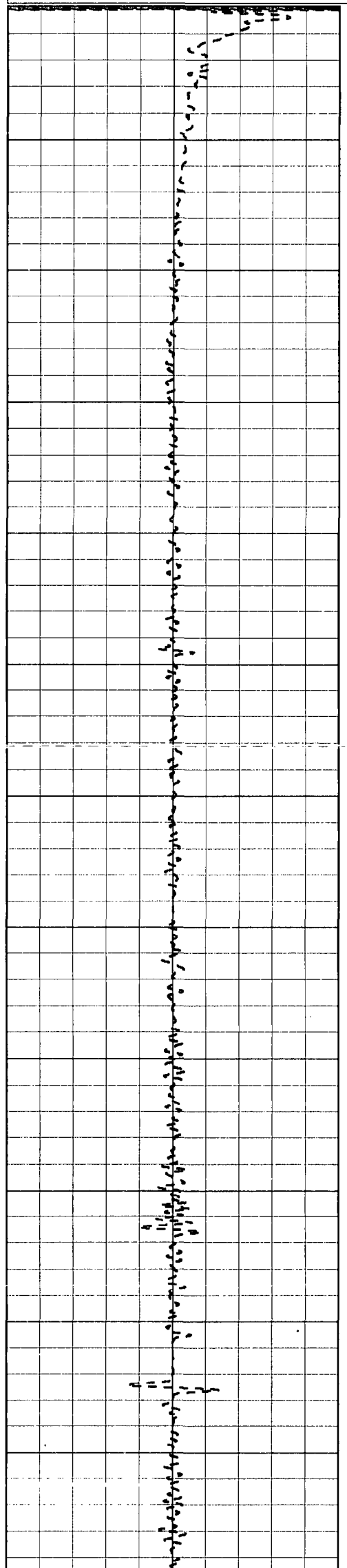
Comments

YOUNGQUIST BROTHERS, Inc
GEOPHYSICAL LOGGING DIVISION

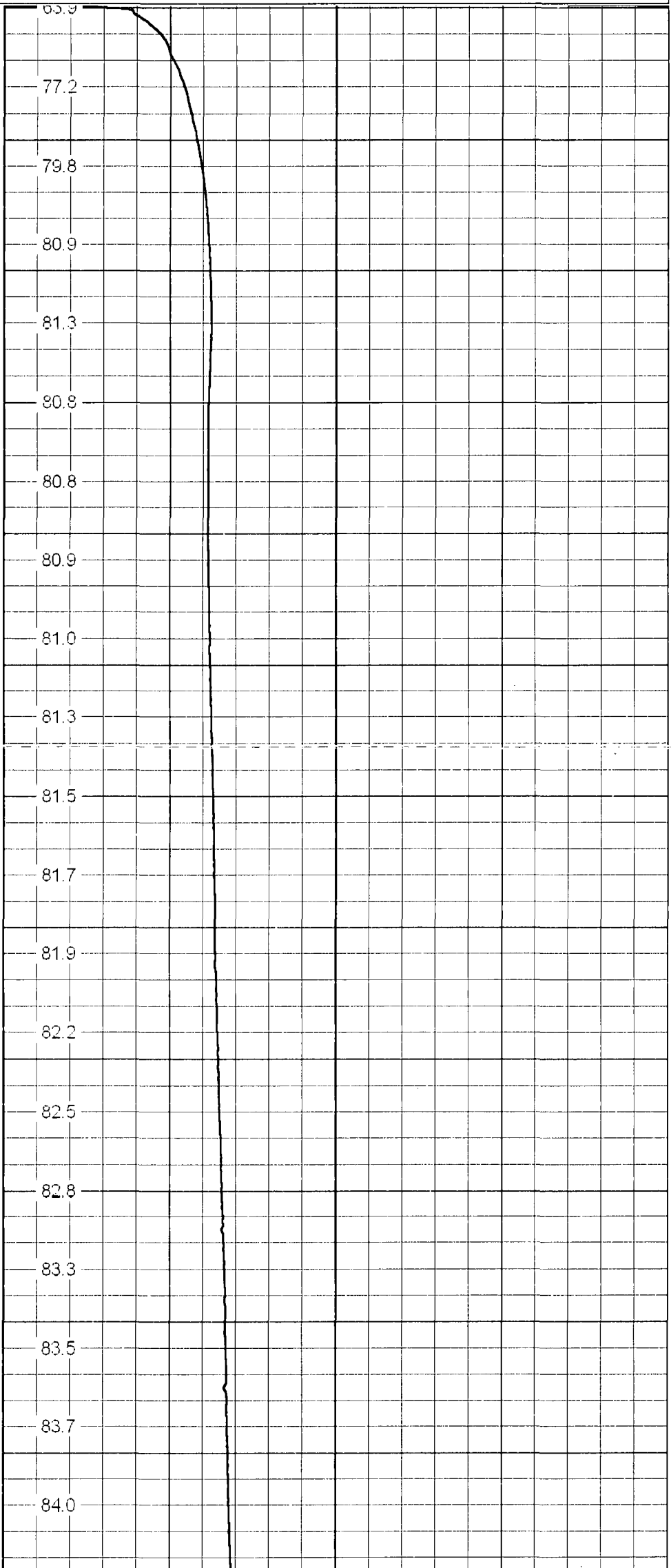
TEMPERATURE

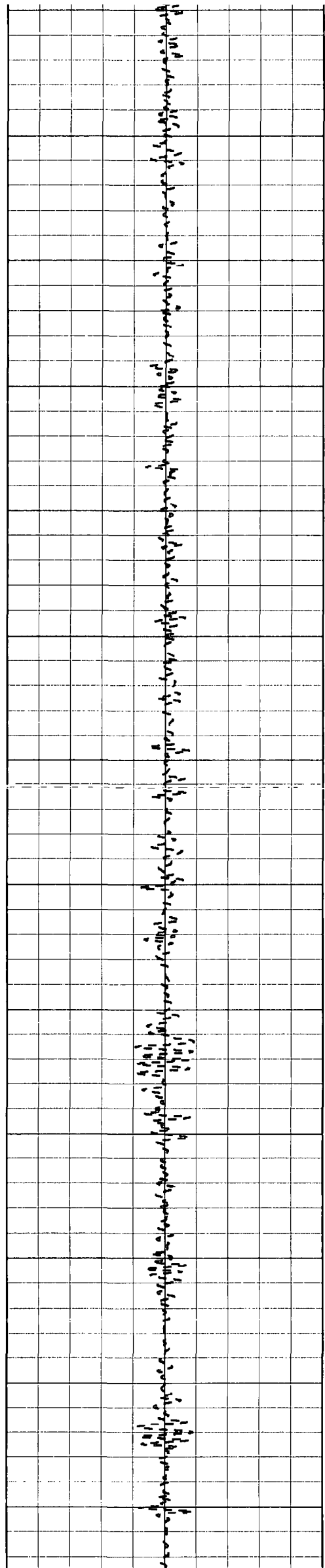
Database File: marcois.db
Dataset Pathname: RTS/TEMP
Presentation Format: temp
Dataset Creation: Fri Feb 06 08:22:02 2009 by Log 6.2_B4
Charted by: Depth in Feet scaled 1:600

Temperature
(degF)



0
50
100
150
200
250
300
350
400
450
500
550

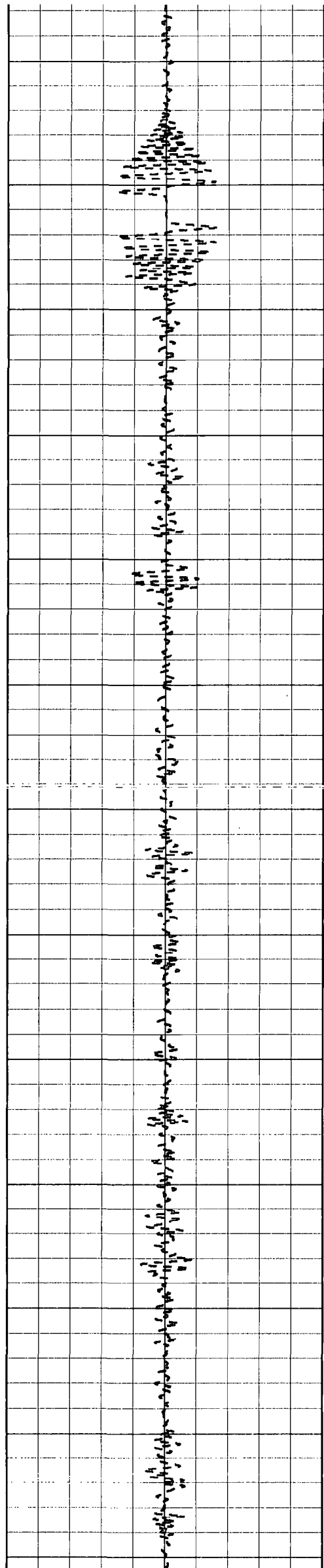




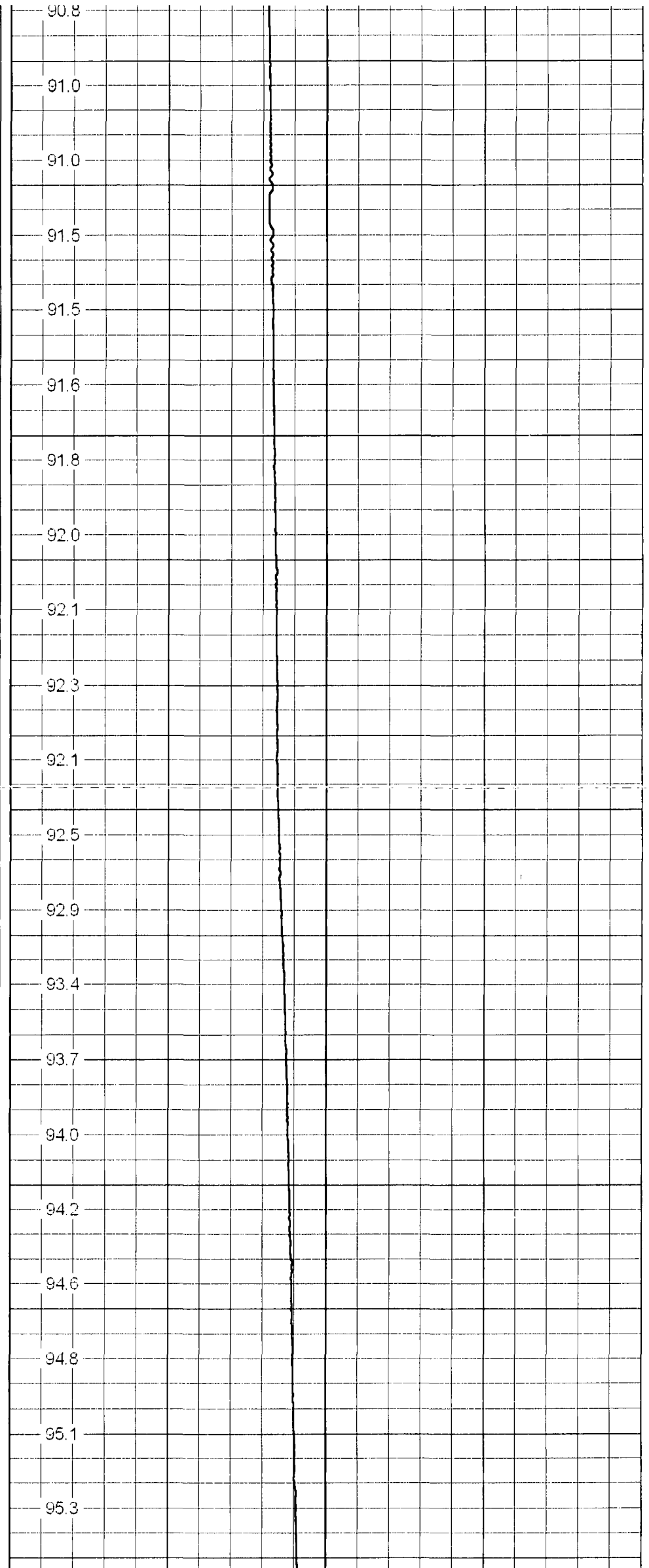
600
650
700
750
800
850
900
950
1000
1050
1100
1150
1200

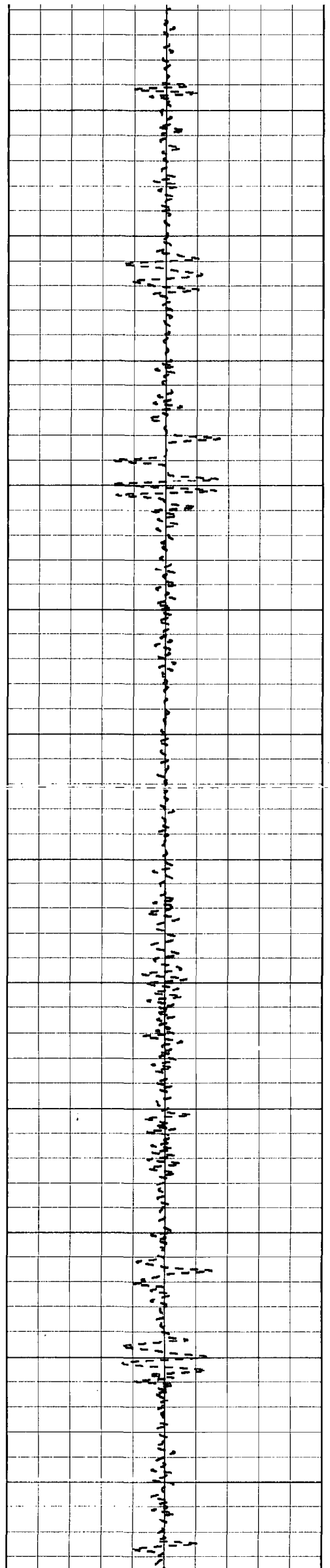
84.3
84.7
84.9
85.4
85.9
86.2
86.5
86.9
87.4
88.2
89.1
89.8
90.3
90.2
90.3
89.7
90.0
90.2
90.2
90.4
90.6





1250
1300
1350
1400
1450
1500
1550
1600
1650
1700
1750
1800
1850

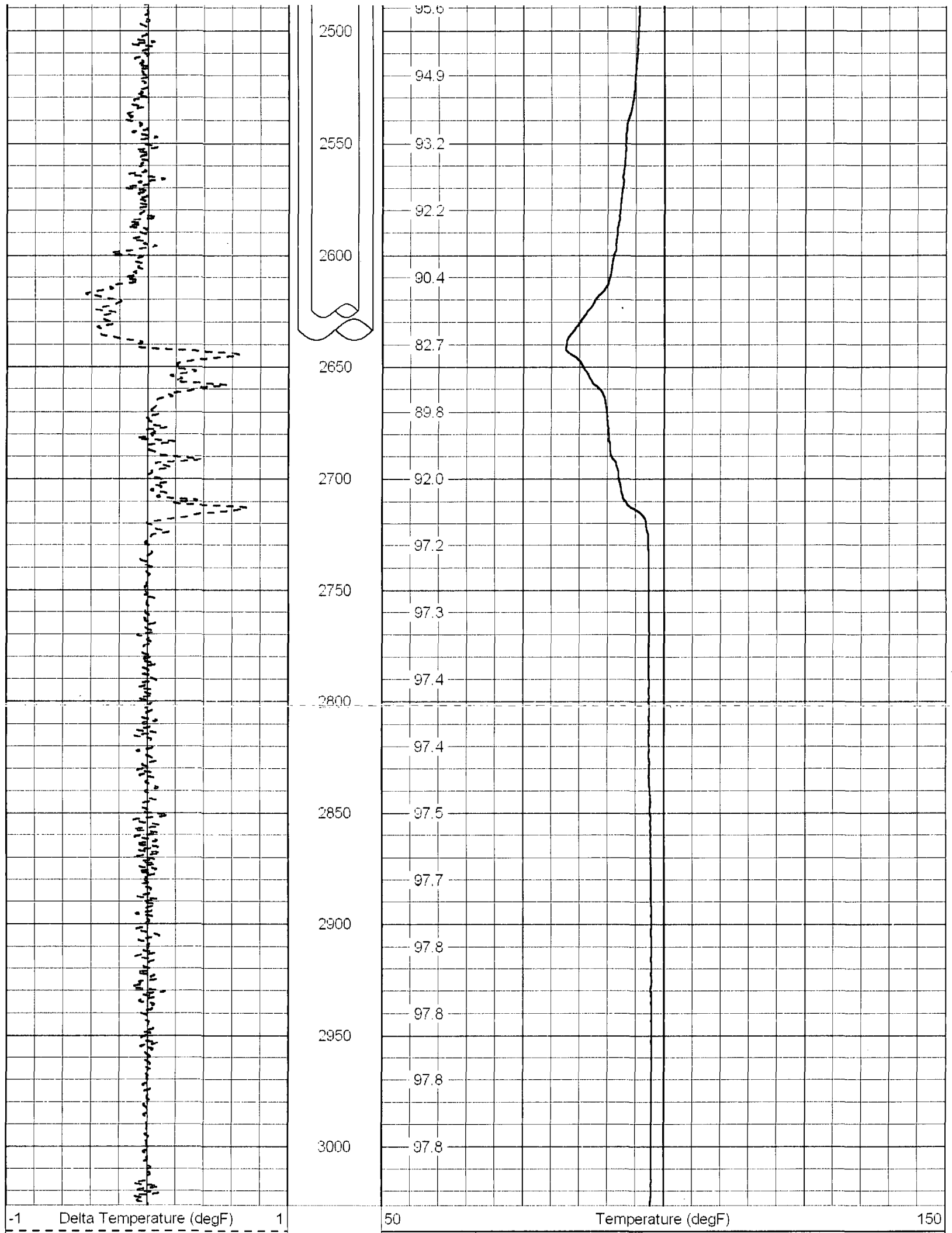




1900
1950
2000
2050
2100
2150
2200
2250
2300
2350
2400
2450

95.6
95.9
96.1
96.4
96.6
96.8
97.1
97.2
97.3
97.4
97.4
97.5
97.6
97.7
97.7
97.6
97.5
97.2
96.6
96.2
96.0





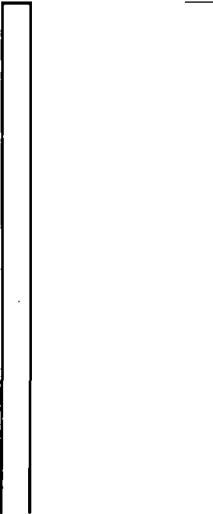
Calibration Report

Database File: marcois.db
 Dataset Pathname: RTS/TEMP
 Dataset Creation: Fri Feb 06 08:22:02 2009 by Log 6.2_B4

Temperature Calibration Report

Serial Number: 954
 Tool Model: RTS
 Performed: Tue Jun 06 16:26:48 2006

Point #	Reading		Reference	
1	342.2	cps	34	degF
2	865.2	cps	86	degF
3	1553.28	cps	152	degF
4		cps		degF
5		cps		degF
6		cps		degF
7		cps		degF
8		cps		degF
9		cps		degF
10		cps		degF

Sensor	Offset (ft)	Schematic	Description	Len (ft)	OD (in)	Wt (lb)
						
			TEMP-RTS (954)	25.50	1.69	70.00

TEMP

0.10

Dataset:	marcois.db: field/well/RTS/TEMP
Total Length:	25.50 ft
Total Weight:	70.00 lb
O.D.	1.69 in