



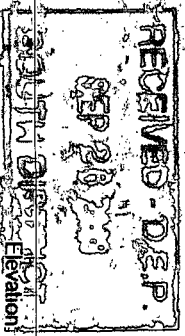
YOUNGQUIST BROTHERS, Inc
GEOPHYSICAL LOGGING DIVISION

FLUID CONDUCTIVITY TEMPERATURE LOG

Company CITY OF MARCO ISLAND
Well IW-2
Field MARCO ISLAND FIELD
County COLLIER
State FL

Company CITY OF MARCO ISLAND
Well IW-2
Field MARCO ISLAND FIELD
County COLLIER State FL

Location
Permanent Datum
Log Measured From
Drilling Measured From
Elevation
Other Services
SEE COMMENTS



Date	11-SEPT-2008	Run Number	SIX	Bottom	3340'
Run Number		Depth Driller	3340'		
Depth Driller		Bottom Logged Interval	3340'		
Bottom Logged Interval		Top Log Interval	CASING		
Top Log Interval		Open Hole Size	12.25"		
Open Hole Size		Type Fluid	WATER		
Type Fluid		Density / Viscosity	NA		
Density / Viscosity		Max. Recorded Temp.	NA		
Max. Recorded Temp.		Estimated Cement Top	NA		
Estimated Cement Top		Time Well Ready	1000		
Time Well Ready		Time Logger on Bottom	1030		
Time Logger on Bottom		Equipment Number	103		
Equipment Number		Location	FT. MYERS		
Location		Recorded By	FULLER		
Recorded By		Witnessed By	QUINN, E		
Witnessed By		Borehole Record			
Borehole Record		Bit	From	To	Run No.
ONE	58.5"	CASING	403'	SIX	
TWO	12.25"	CASING	910'		
THREE	46.5"	CASING	903'		
FOUR	12.25"	CASING	2600'		
Borehole Record		Size	Wd/Ft	Top	Bottom
Surface String	48"		375 W.T.	SURFACE	399'
Prot. String	36"		375 W.T.	SURFACE	900'
Production String					
Inner					

<<< Fold Here >>>

All interpretations are opinions based on inferences from electrical or other measurements and we cannot and do not guarantee the accuracy or correctness of any interpretation, and we shall not, except in the case of gross or willful negligence on our part, be liable or responsible for any loss, costs, damages, or expenses incurred or sustained by anyone resulting from any interpretation made by any of our officers, agents or employees. These interpretations are also subject to our general terms and conditions set out in our current Price Schedule.

Comments

OTHER SERVICES:
X-Y CALIPER GAMMA RAY
BOREHOLE COMPENSATED SONIC
DUAL INDUCTION
FLOW
VIDEO

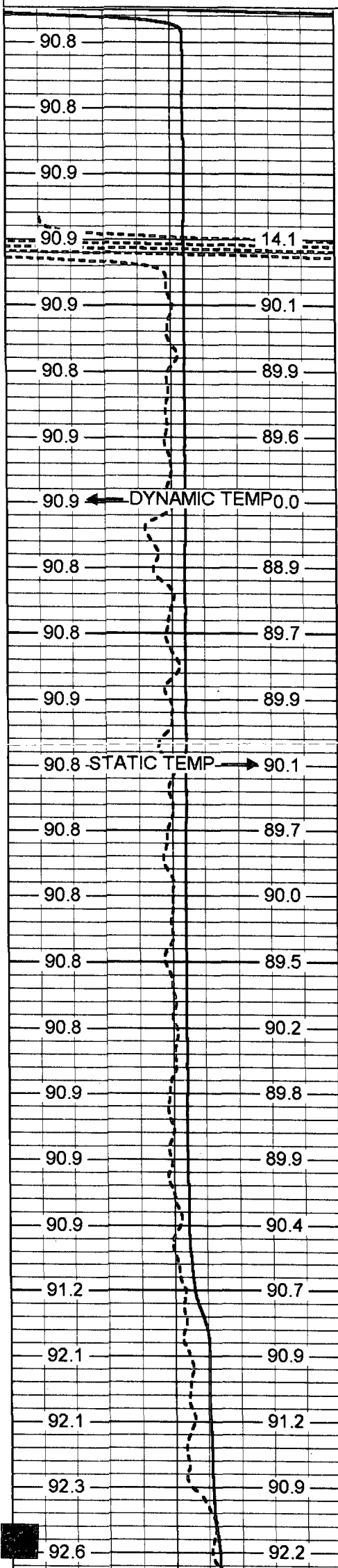


MERGED FCT

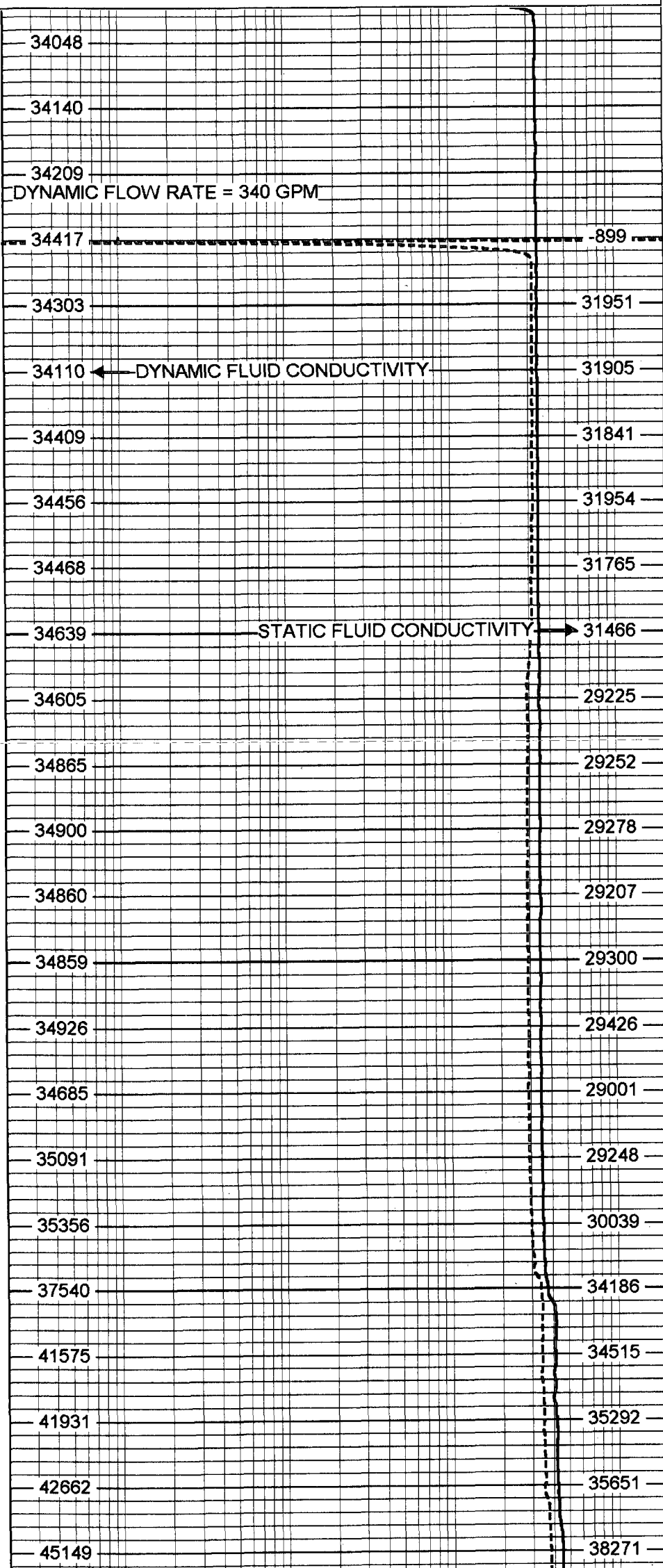
Database File: marcois.db
Dataset Pathname: run6/pass12
Presentation Format: frt_mg
Dataset Creation: Thu Sep 11 19:11:07 2008 by Log 6.2_B4
Charted by: Depth in Feet scaled 1:240

80 DYNAMIC TEMP (degF) 100
 80 STATIC TEMP (degF) 100

20 DYNAMIC FLUID CONDUCTIVITY (uS) 200000
 20 STATIC FLUID CONDUCTIVITY (uS) 200000



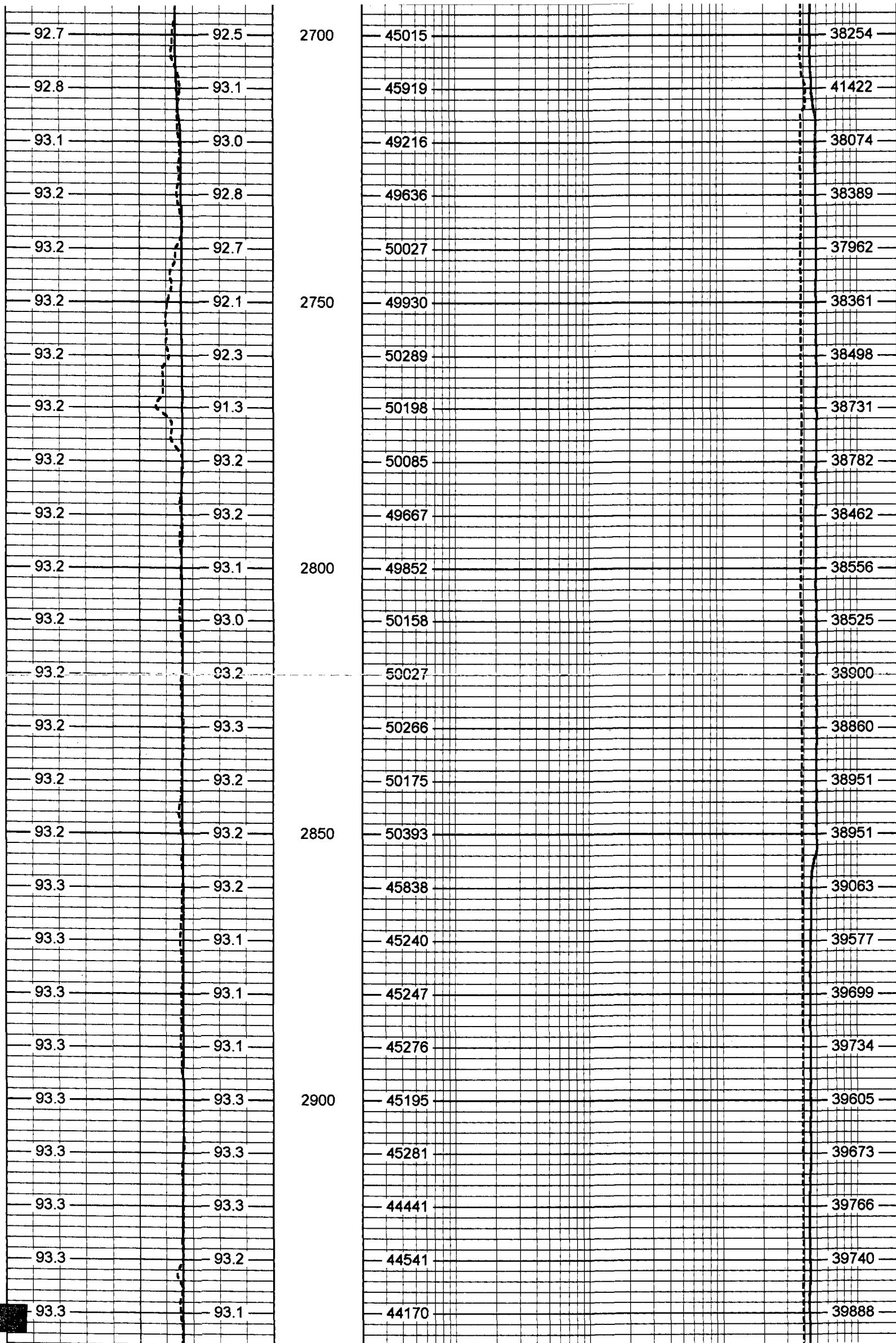
2500
 2550
 2600
 2650

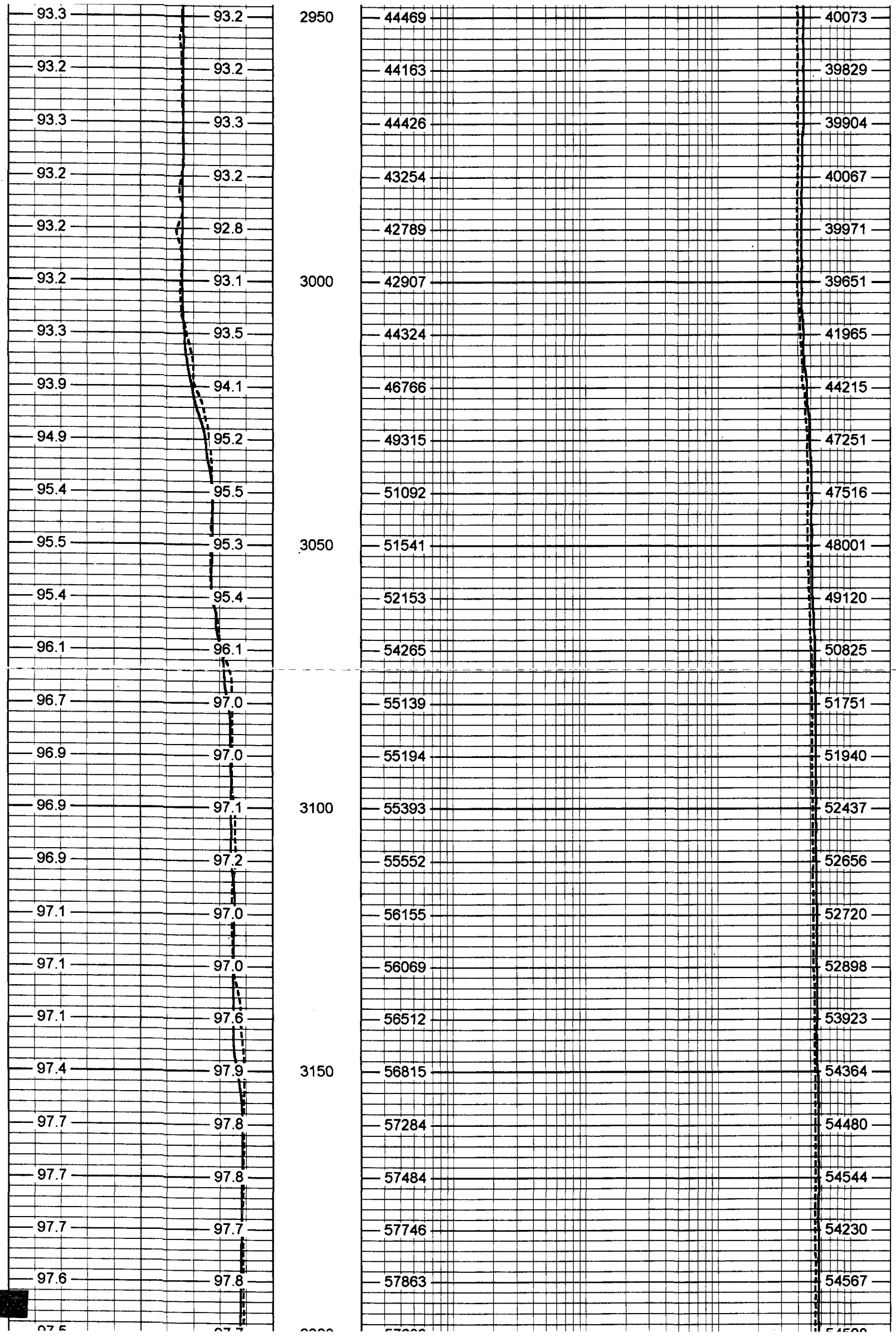


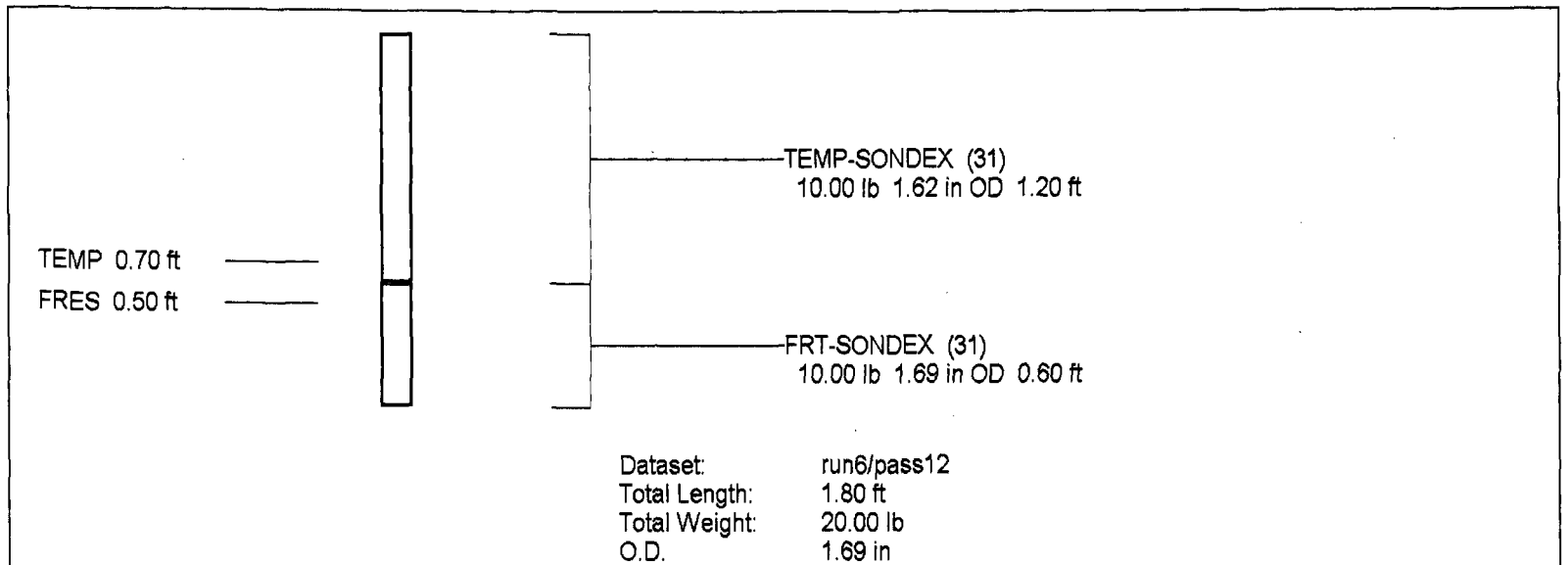
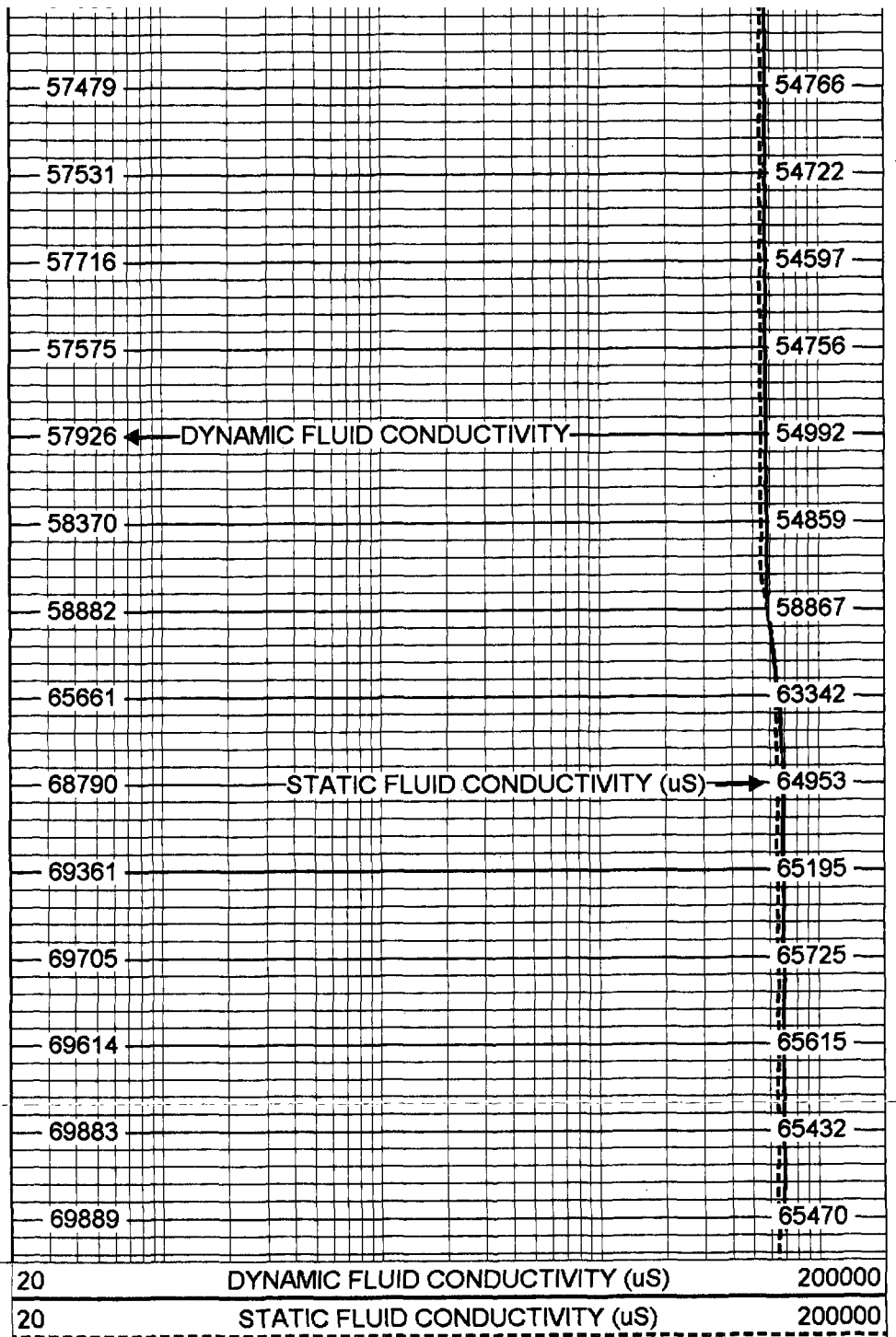
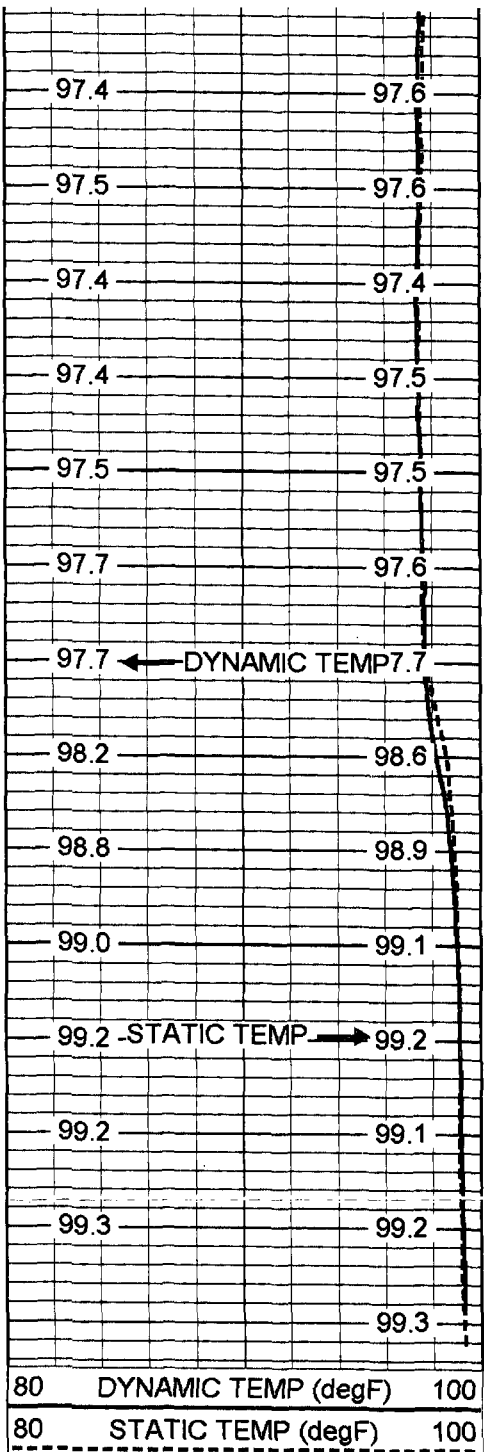
DYNAMIC FLOW RATE = 340 GPM

DYNAMIC FLUID CONDUCTIVITY

STATIC FLUID CONDUCTIVITY







Performed:

SONDEX
Mon Jun 09 10:53:41 2008

Point #	Reading		Reference
1	31.165	cps	1000.000
2	167.193	cps	10000.000
3	415.824	cps	25000.000
4	918.476	cps	50000.000
5		cps	
6		cps	

Temperature Calibration Report

Serial Number:

31

Tool Model:

SONDEX

Performed:

Mon Jun 09 10:53:33 2008

Point #	Reading		Reference	
1	152.99	cps	39	degF
2	330.989	cps	82	degF
3	688.237	cps	157	degF

