

Schlumberger

TEMPERATURE SURVEY

COUNTY	COLLIER	COMPANY	ALSAY, INCORPORATED
FIELD	MARCO ISLAND	WELL	MARCO ISLAND SSU IW NO.1
LOCATION	SOUTHERN STATES UTILITY	STATE	FLORIDA
WELL	MARCO ISLAND SSU IW NO.1	COUNTY	COLLIER
COMPANY	ALSAY, INCORPORATED	FIELD	MARCO ISLAND
PERMANENT DATUM	PAD	LOGGING SERVICE:	DIL/GR BHC/VDL X-Y TEMP
LOG MEASURED FROM	PAD	ELEV.	13.1 F above Perm. Datum
DRILLING MEASURED FROM	PAD	DATE	02-OCT-1991
DATE	02-OCT-1991	Run No.	THREE
DEPTH DRILLER	3364.0 F	DEPTH LOGGER (SCH.)	3328.0 F
BTM. LOG INTERVAL	3321.0 F	TOP LOG INTERVAL	886.0 F
CASING-DRILLER	34" @ 900.0 F	CASING-LOGGER	12 1/4
BIT SIZE	12 1/4	TYPE FLUID IN HOLE	SALT WATER
DENS.	8.60 LB/G	PH	
SOURCE OF SAMPLE		Rm @ Meas. Temp.	@
Rm @ Meas. Temp.	@	Rmf @ Meas. Temp.	@
Rmf @ Meas. Temp.	@	Rmc @ Meas. Temp.	@
SOURCE: Rmf	@	Rm @ BHT	@
Rmc	@	Circulation Ended	
Logger on Bottom		Max. Res. Temp.	
Equip. Location	8186	Recorded By	SCHULER
Witnessed By	KERN		

The well name, location and borehole reference data were furnished by the customer.

All interpretations are opinions based on inferences from electrical or other measurements and we cannot, and do not guarantee the accuracy or correctness of any interpretations, and we shall not, except in the case of gross or willful negligence on our part, be liable or responsible for any loss, costs, damages or expenses incurred or sustained by anyone resulting from any interpretations made by any of our officers, agents or employees. These interpretations are also subject to Clause 4 of our General Terms and Conditions as set out in our current Price Schedule.

Run No.	THREE
Service Order No.	
Drilling Fluid Level	
Salinity	
Rmf @ BHT	@
Rmc @ BHT	@
Logging Speed	
EQUIPMENT DATA	
Tool Number 1	
Tool Number 2	
Tool Number 3	
Tool Number 4	
Tool Number 5	
Tool Number 6	
Tool Number 7	
Tool Number 8	
Tool Number 9	
Tool Number 10	
Tool Number 11	
Tool Number 12	

REMARKS:



Entered into
OCULUM
South District

PTEM(DEGF)			
50.000	100.00		
CCL			PDTE(DF/F)
-13.50	1.5000	-1.000	1.0000
GR (GAPI)			PTEM(DEGF)
0.0	100.00	80.000	100.00

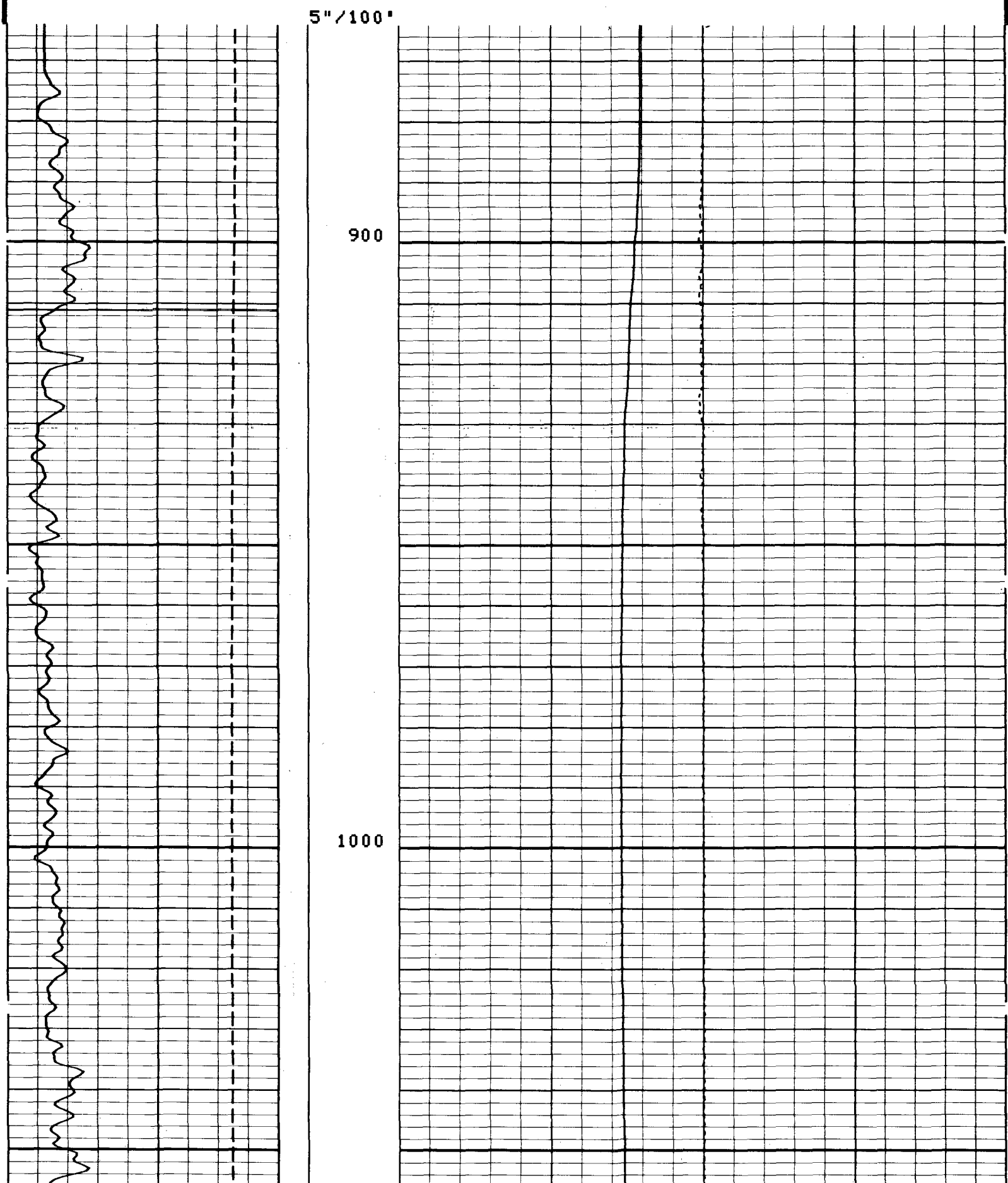
CP 32.4

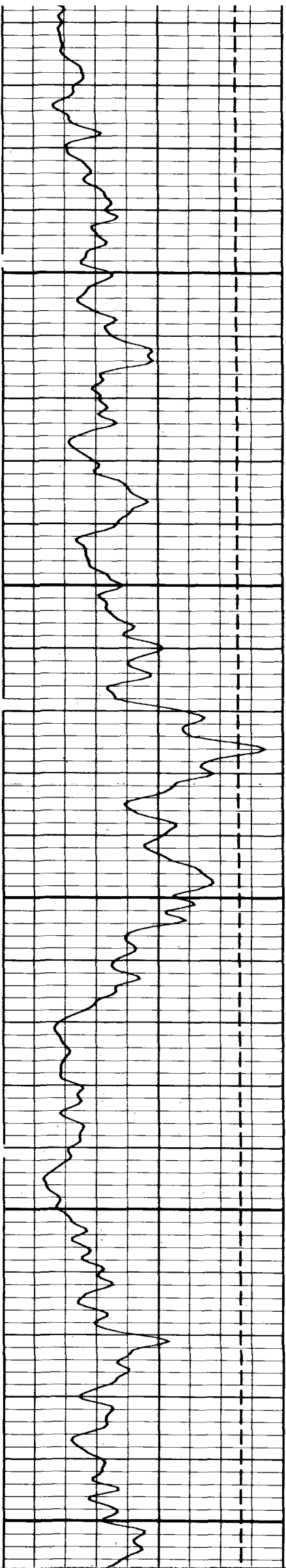
FILE 11

02-OCT-1991 18:00

INPUT FILE(S)
9

DATA ACQUIRED
02-OCT-1991 17:11

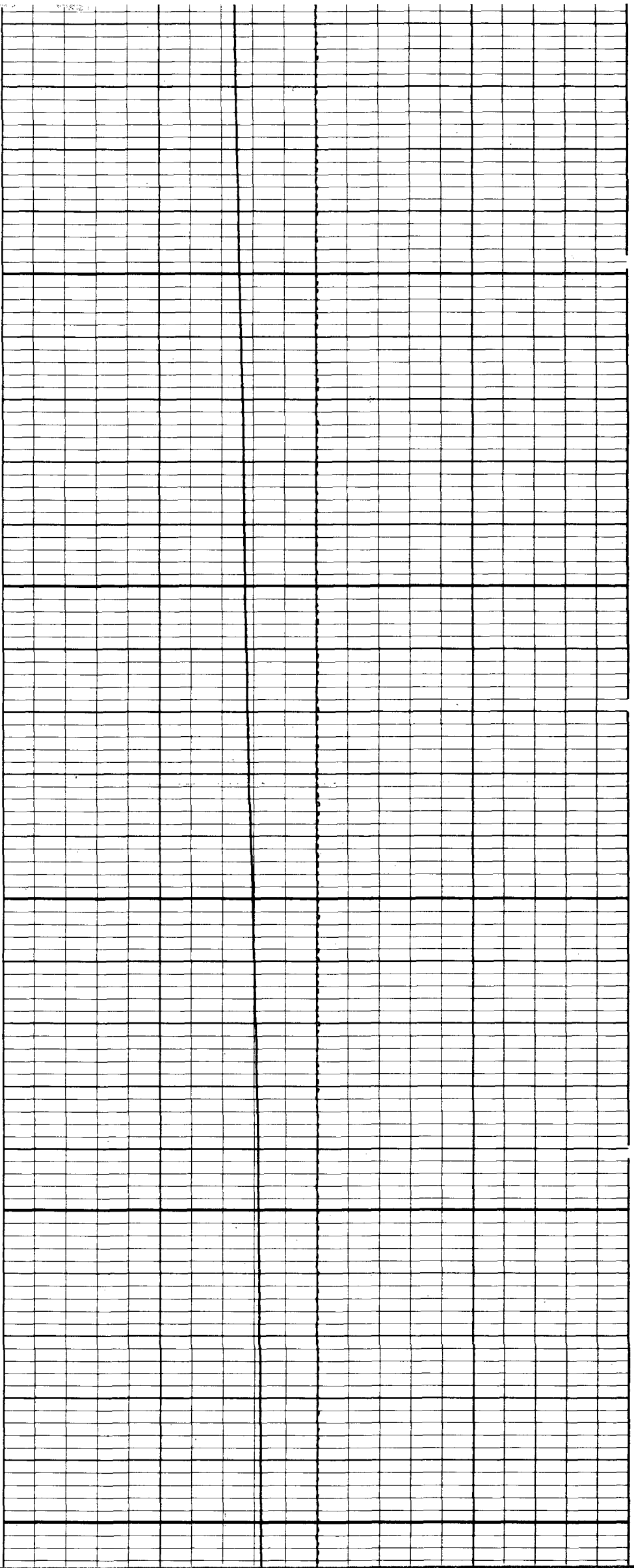


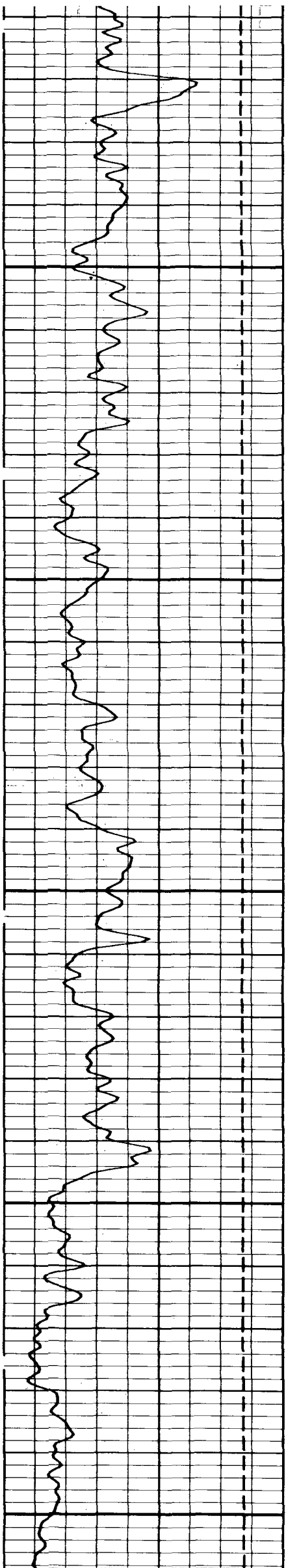


1100

1200

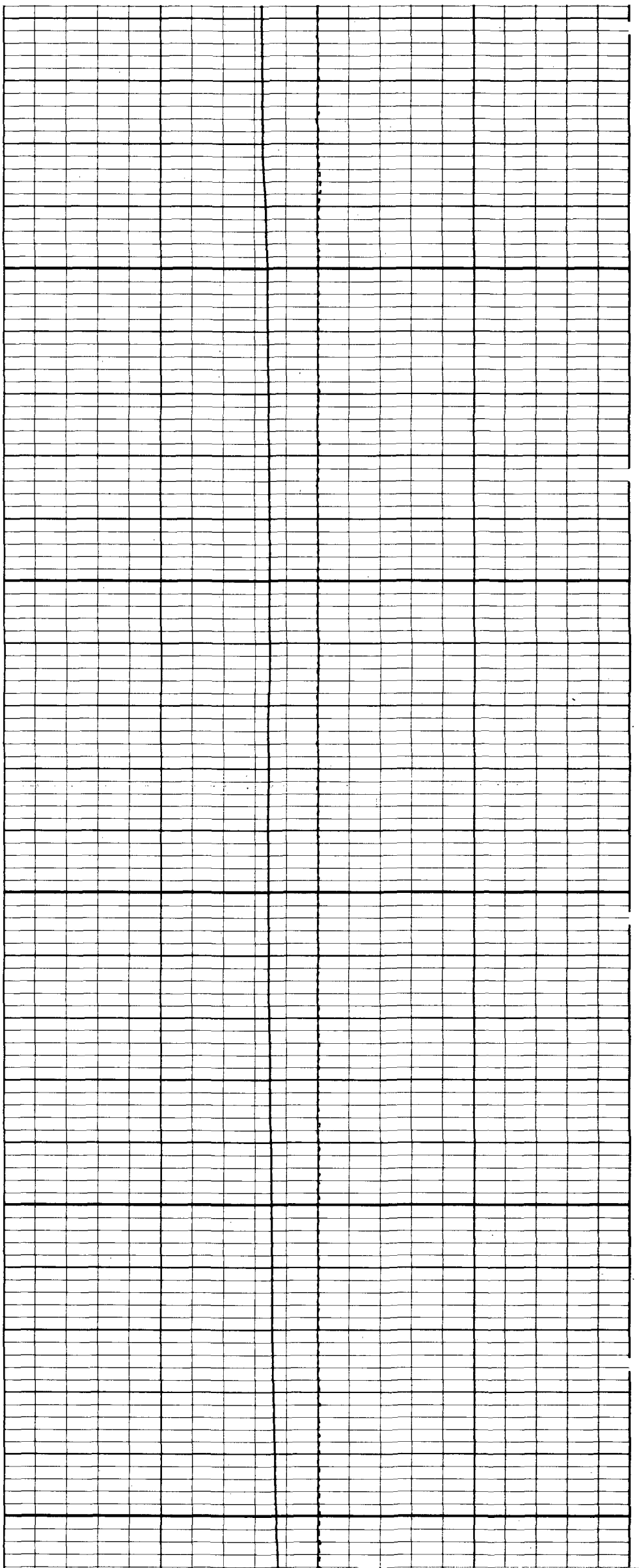
1300

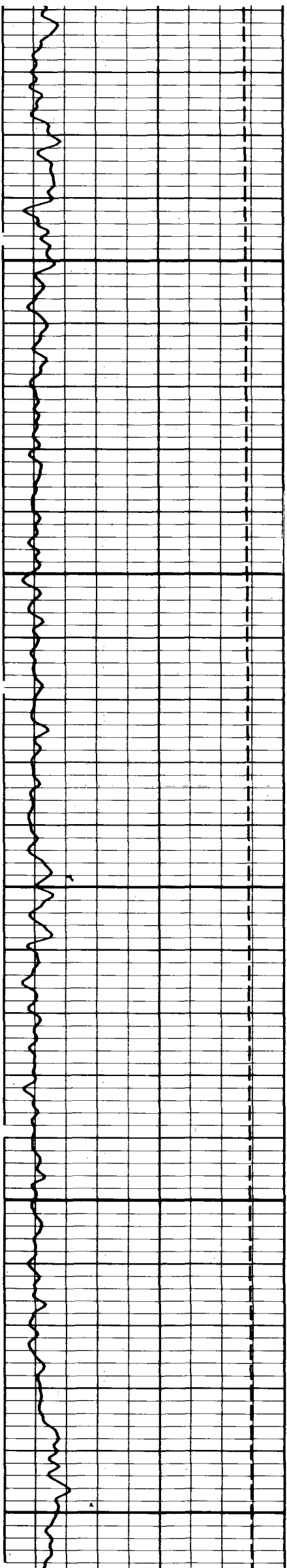




1400

1500

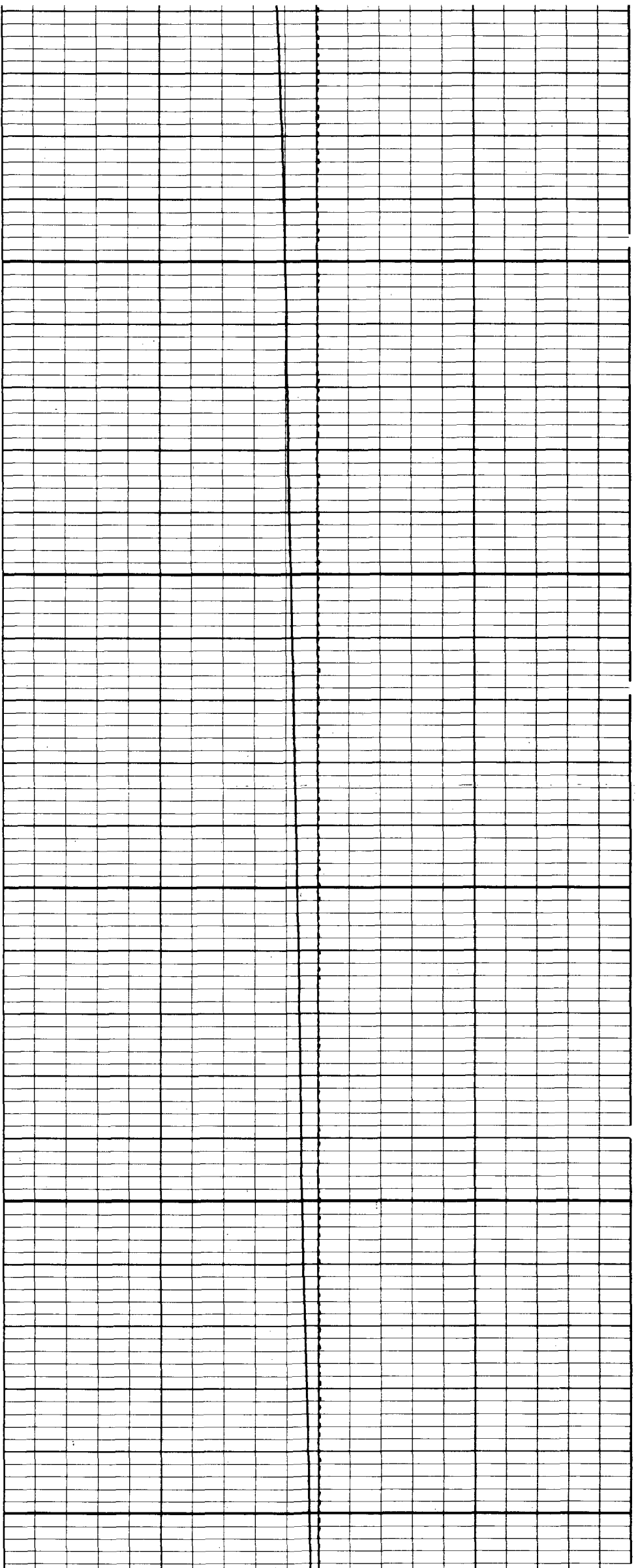


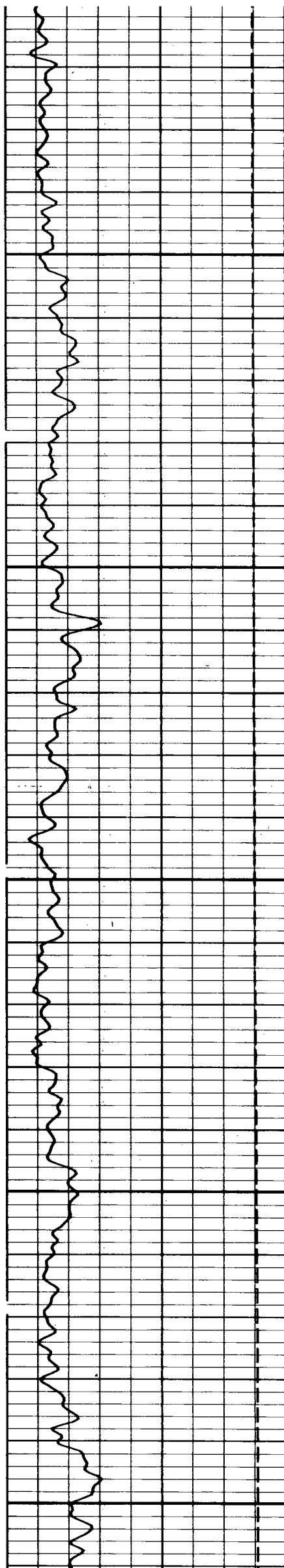


1600

1700

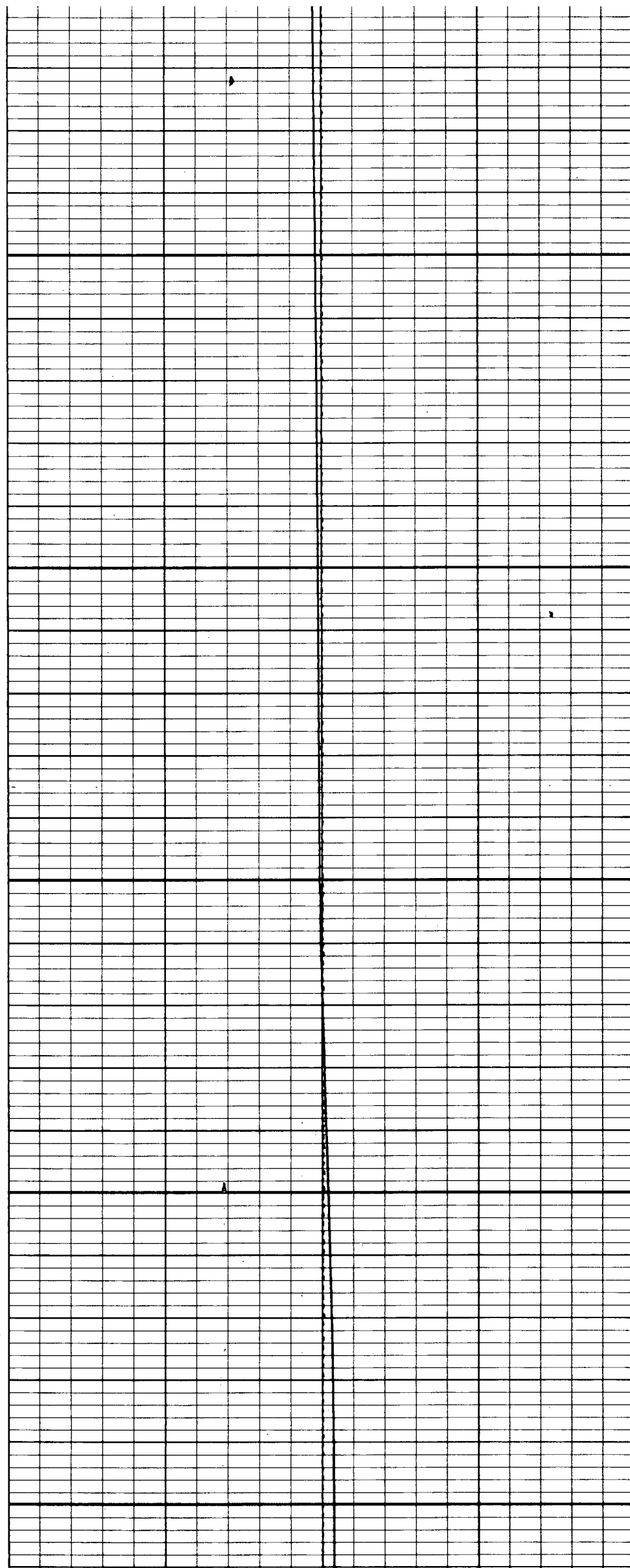
1800

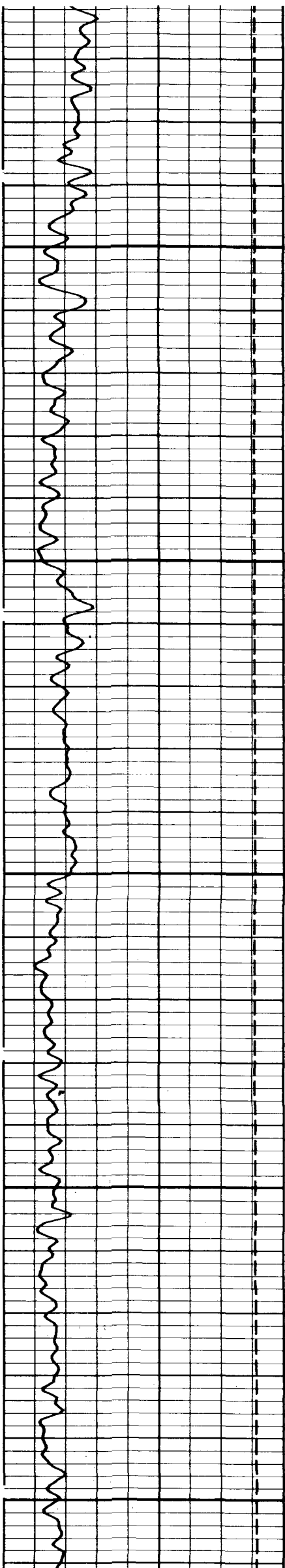




1900

2000

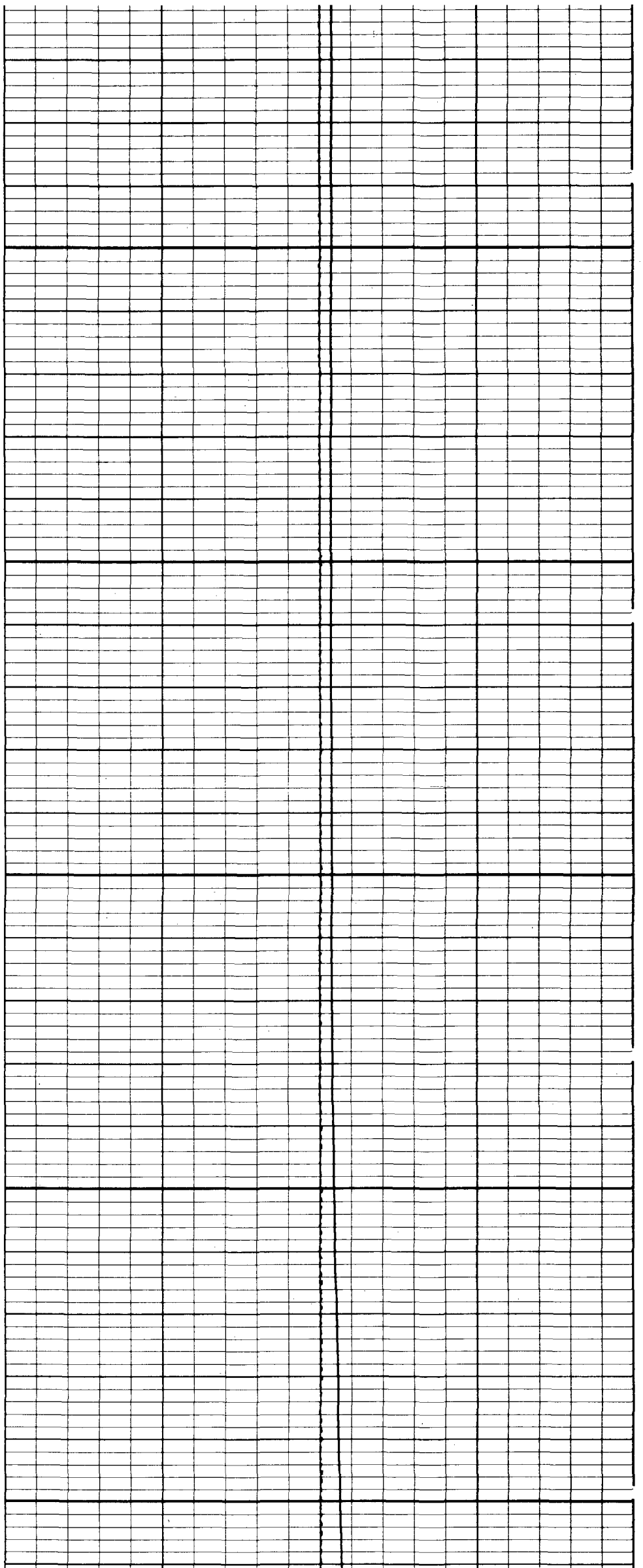


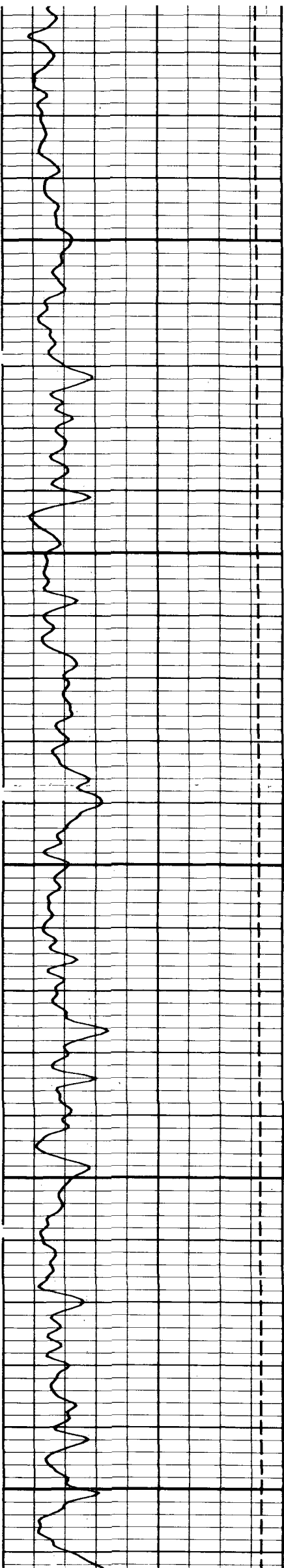


2100

2200

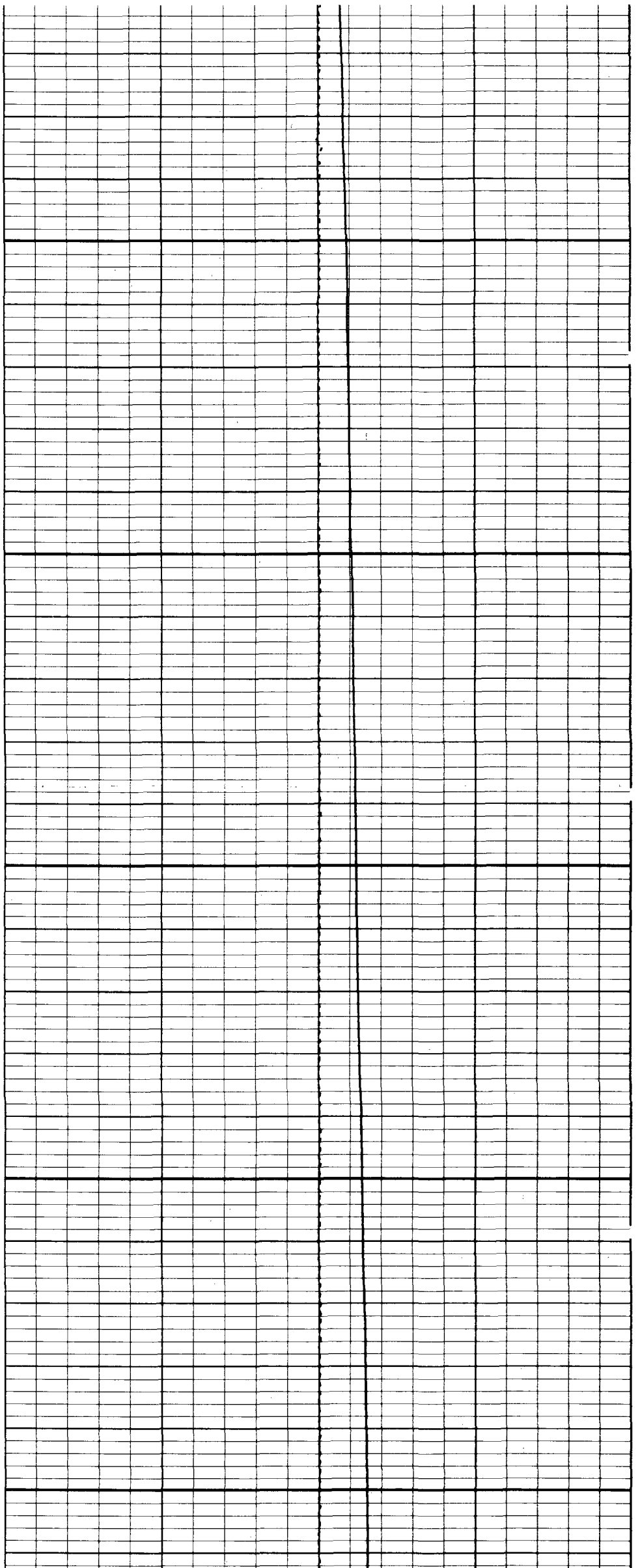
2300

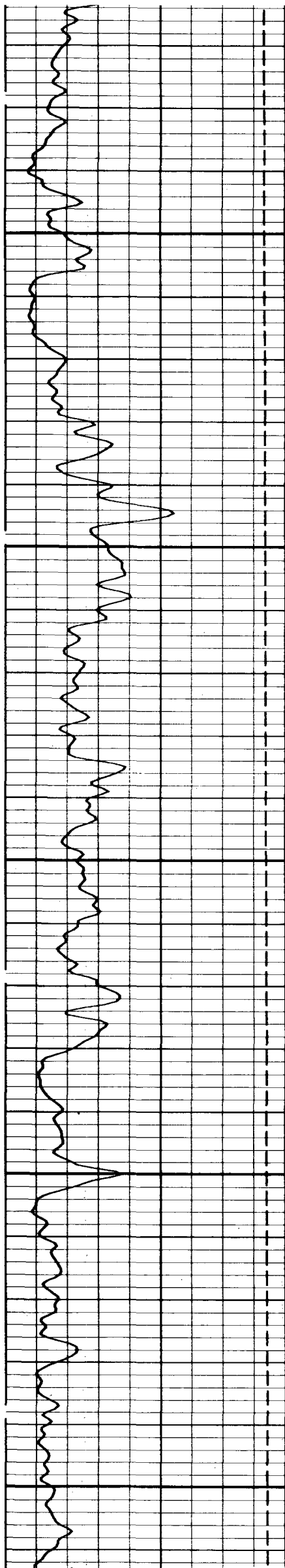




2400

2500

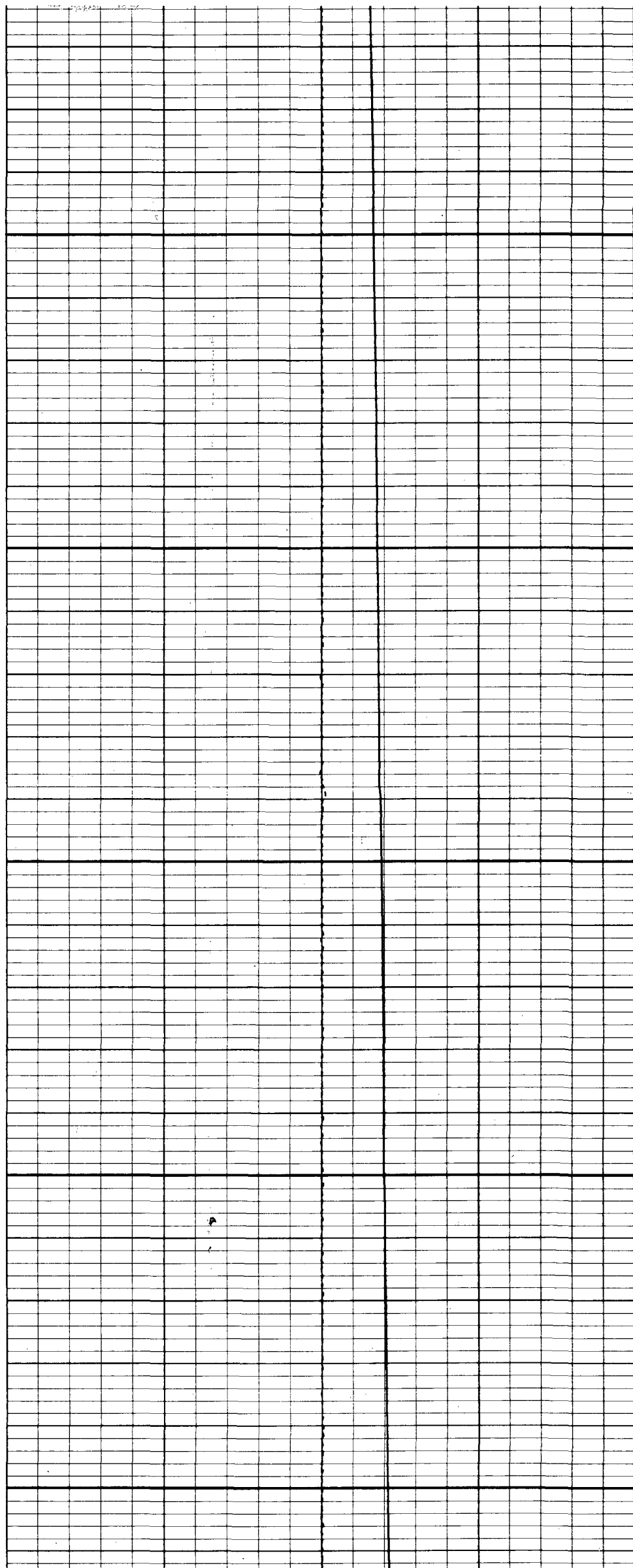


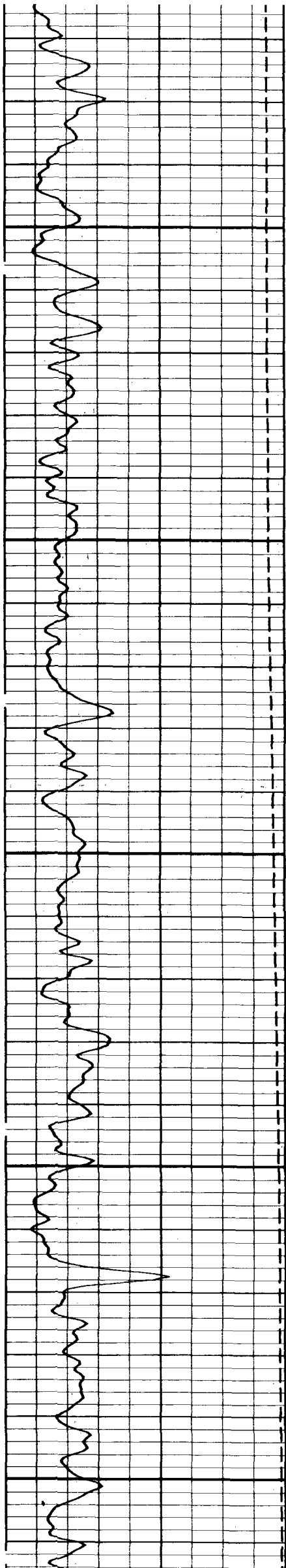


2600

2700

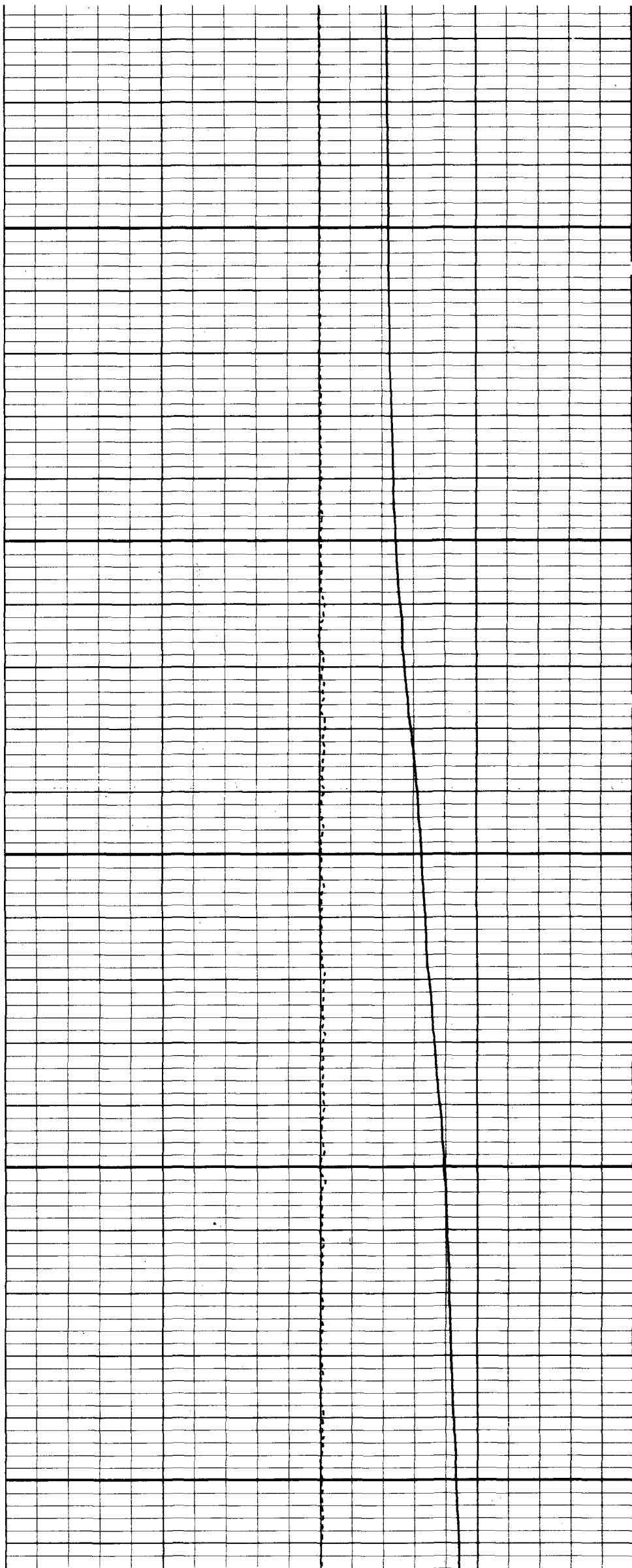
2800

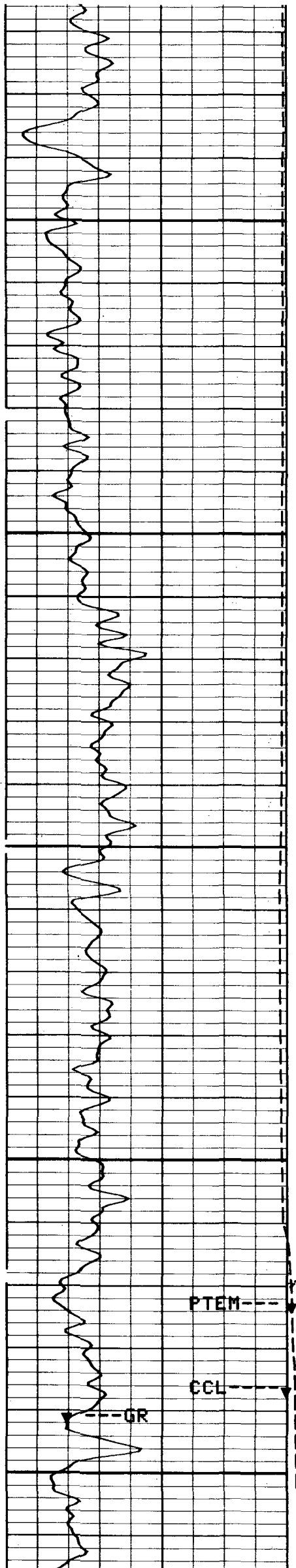




2900

3000

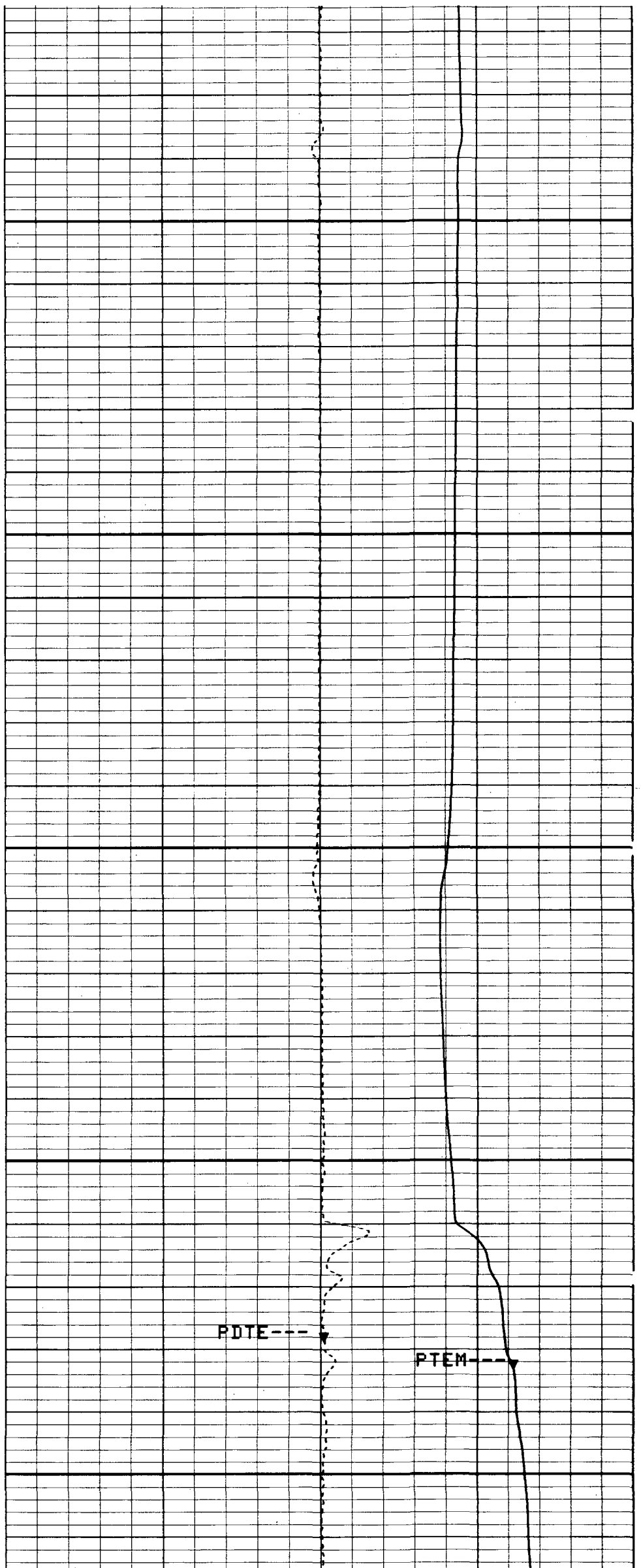




3100

3200

3300



PDTE

PTEM

5"/100"

CP 32.4

FILE 11

02-OCT-1991 17:55

INPUT FILE(S)
9

DATA ACQUIRED
02-OCT-1991 17:11

PTEM(DEGF)		PDTE(DF/F)	
50.000	100.00		
CCL			
-13.50	1.5000	-1.000	1.0000
GR (GAPI)		PTEM(DEGF)	
0.0	100.00	80.000	100.00

BEFORE SURVEY CALIBRATION SUMMARY

PERFORMED: 02-OCT-1991 17:07

PROGRAM FILE: PLS (VERSION 32.4 90/07/05 90/06/06)

PTS CALIBRATION SUMMARY

WELL-TEMP. VCD CALIBRATION SUMMARY

TVC0=-83.4763 TVC1= 2.65387 TVC2= .001362

CP 32.4

FILE 1

02-OCT-1991 17:07