

COUNTY	COLLIER	COMPANY	ALSAY, INC.
FIELD	MARCO ISLAND	WELL	MARCO ISLAND SSU IW NO.1
LOCATION	SOUTHERN STATES UTILITIES	FIELD	MARCO ISLAND
WELL	MARCO ISLAND SSU IW NO.1	COUNTY	COLLIER
COMPANY	ALSAY, INC.	STATE	FLORIDA
Permanent Datum	PAD	Elev.	
Log Measured From	PAD		above Perm. Datum
Drilling Measured From	PAD		
Date	12-FEB-1992	Elev.: K.B.	
Run No.	FINAL	D.F.	
Depth Driller	3335.0 F	G.L.	
Depth Logger (Schl.)	3330.0 F		
Btm. Log Interval	3330.0 F		
Top Log Interval	40.0 F		
Casing-Driller	20' @ 2640.0 F		@
Casing-Logger	2640.0 F		@
Bit Size	14 @		@
Type Fluid in Hole	FRESH WATER		
Dens.	8.35 LB/G		
PH			
Source of Sample			
Rmf @ Meas. Temp.	@		@
Rmf @ Meas. Temp.	@		@
Rmc @ Meas. Temp.	@		@
Source: Rmf			@
Rmc			@
Rm @ BHT	@ 97.0 DEGF		@
Circulation Ended			
Logger on Bottom			
Max. Rec. Temp.	97.0 DEGF		
Equip.	8193	FT. MYERS	
Recorded By	SCHULER		
Witnessed By	MCGRATH/KERRN		

The well name, location and borehole reference data were furnished by the customer.

All interpretations are opinions based on inferences from electrical or other measurements and we cannot, and do not guarantee the accuracy or correctness of any interpretations, and we shall not, except in the case of gross or willful negligence on our part, be liable or responsible for any loss, costs, damages or expenses incurred or sustained by anyone resulting from any interpretations made by any of our officers, agents or employees. These interpretations are also subject to Clause 4 of our General Terms and Conditions as set out in our current Price Schedule.

Run No.	FINAL
Service Order No.	
Drilling Fluid Level	
Salinity	
Rmf @ BHT	@ 97.0 DEGF @
Rmc @ BHT	@ 97.0 DEGF @
Logging Speed	
EQUIPMENT DATA	
Tool Number 1	
Tool Number 2	
Tool Number 3	
Tool Number 4	
Tool Number 5	
Tool Number 6	
Tool Number 7	
Tool Number 8	
Tool Number 9	
Tool Number 10	
Tool Number 11	
Tool Number 12	

REMARKS:



Interpretations are also subject to Clause 7 of our General Terms and Conditions as set out in our current Price Schedule.

-13.50	1.5000	50.000	70.000
CCL		PTEM(DEGF)	
0.0	100.00	70.000	90.000
GR (GAPI)		PTEM(DEGF)	110.00
		PTEM(DEGF)	
		-1.000	1.0000
		PDTE(DF/F)	

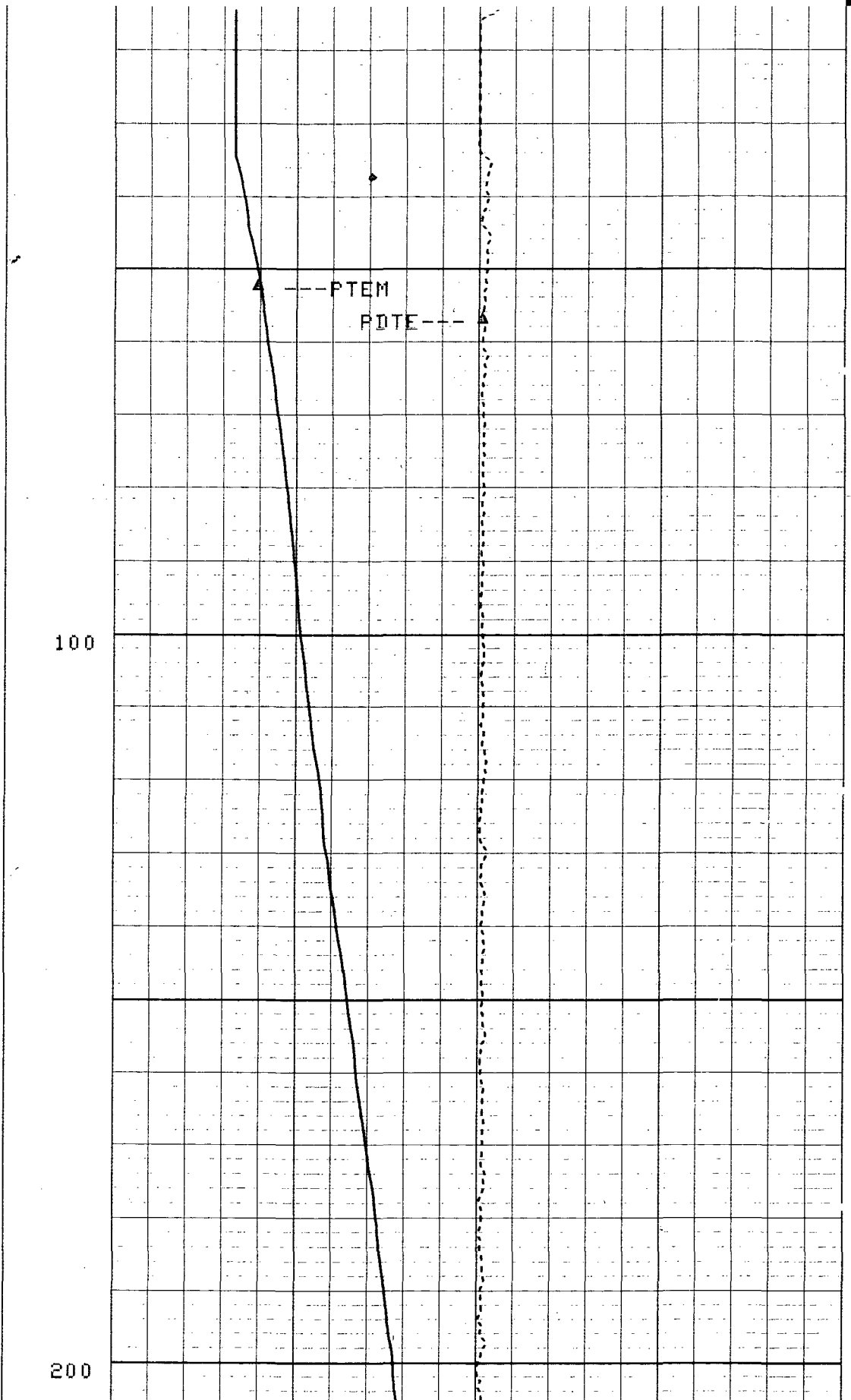
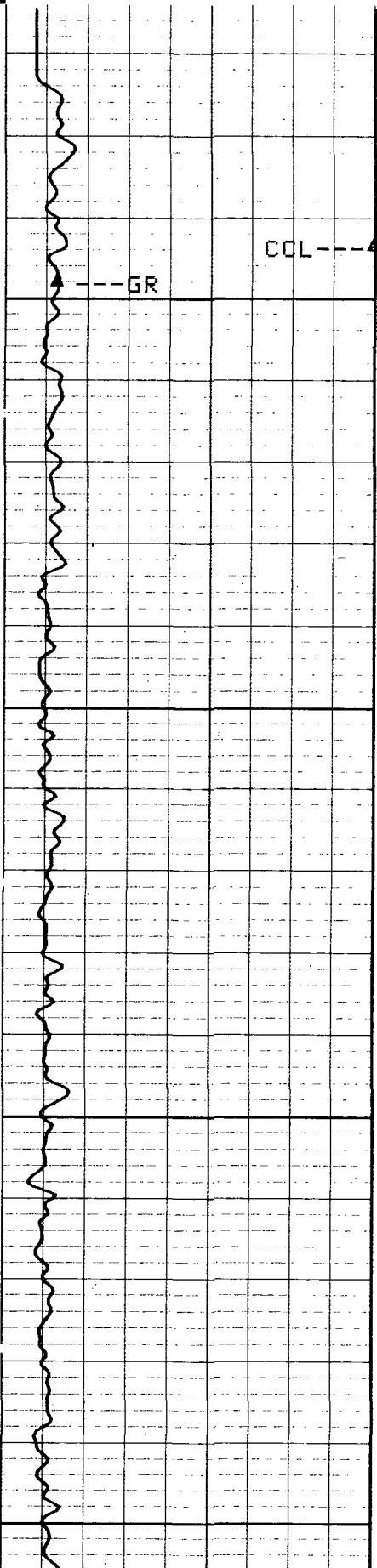
CP 32.6

FILE 4

12-FEB-1992 11:02

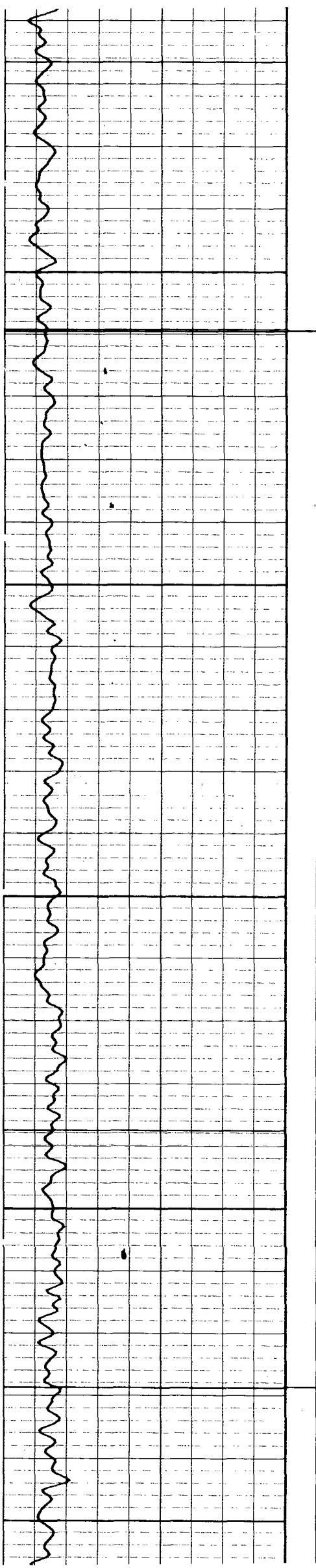
(DOWN)

5"/100"



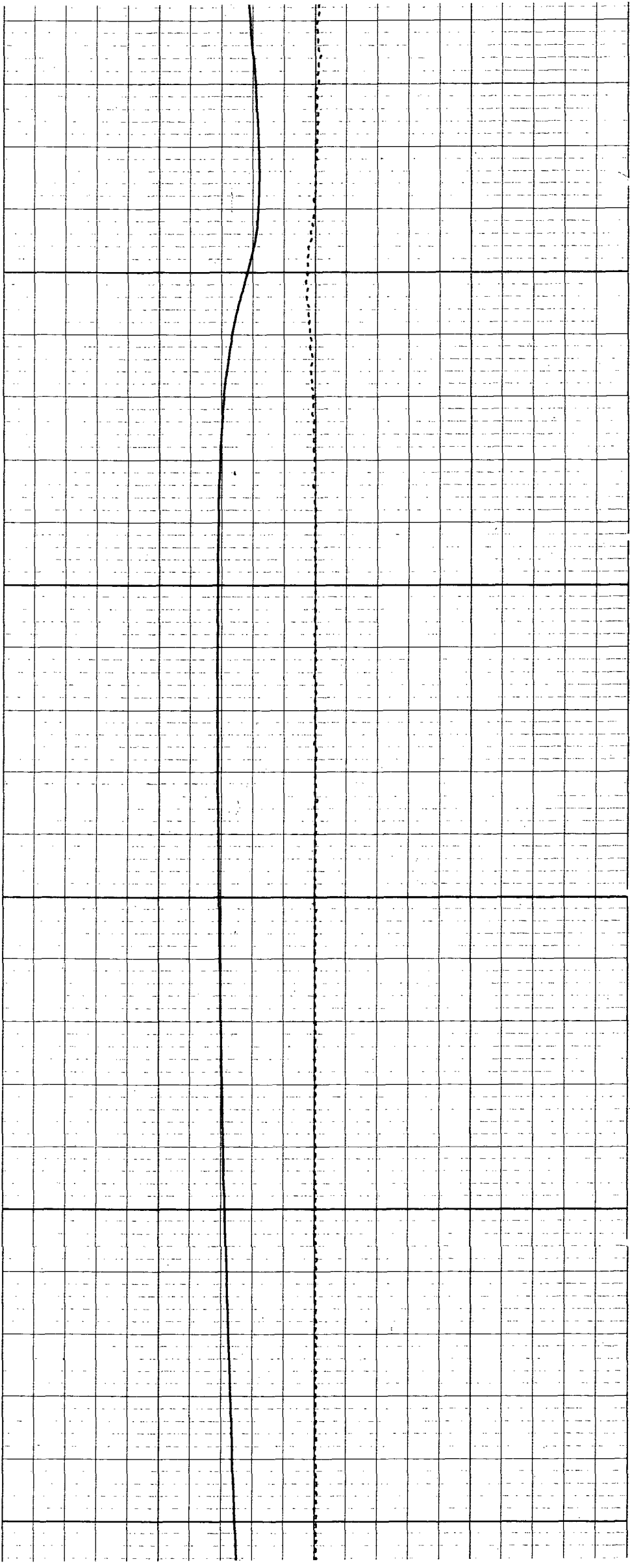
100

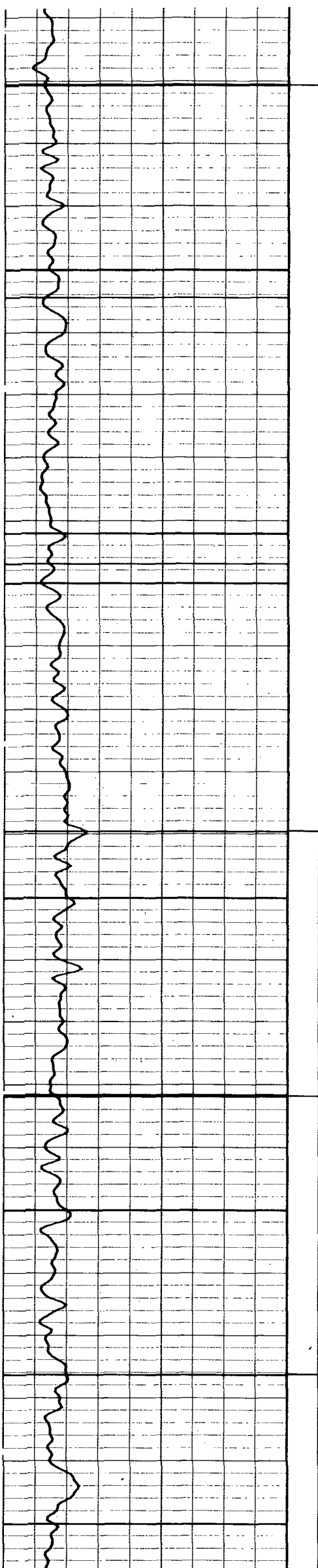
200



300

400

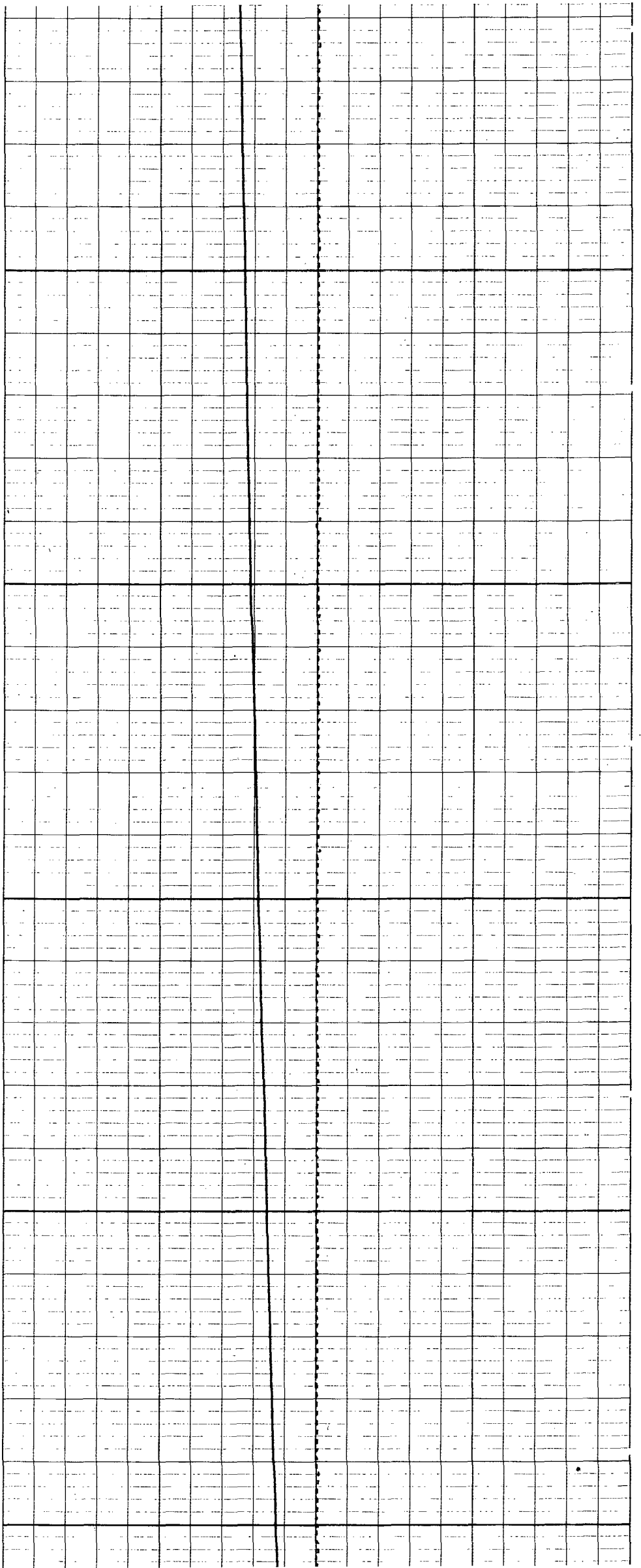


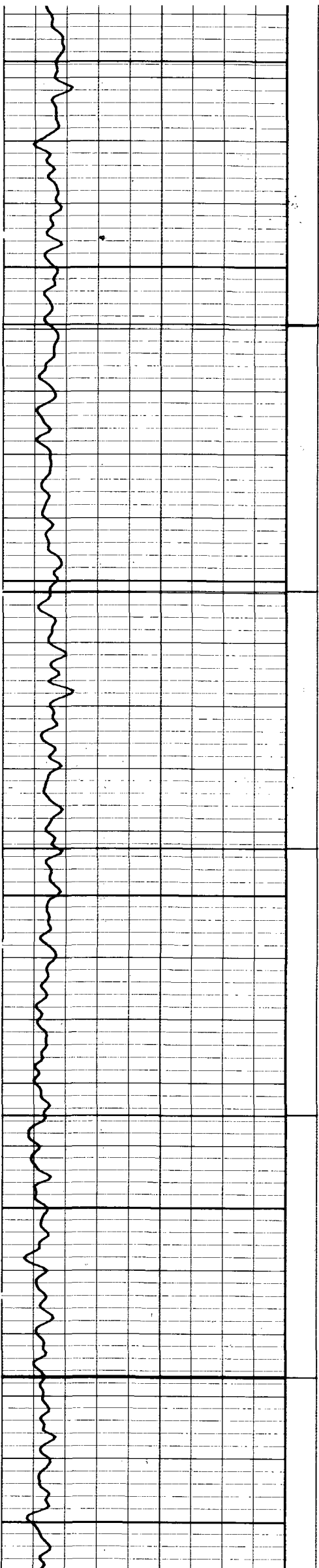


500

600

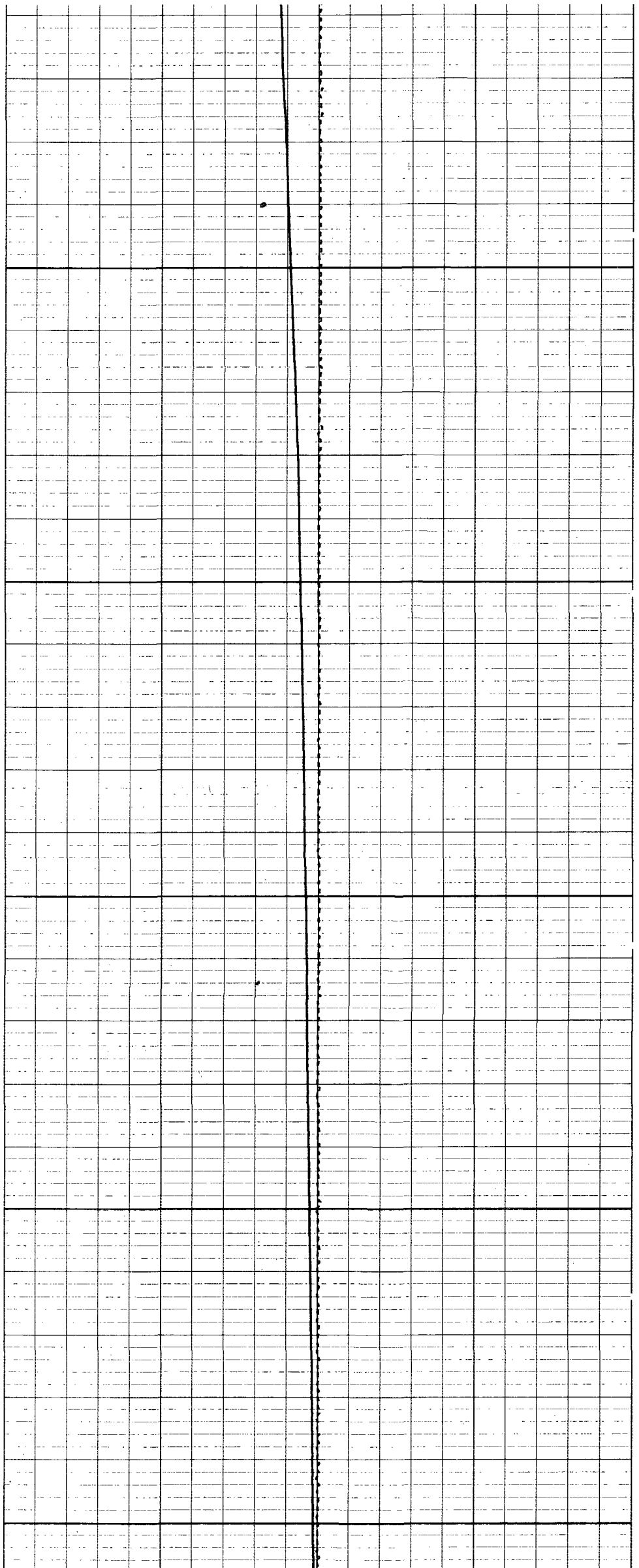
700

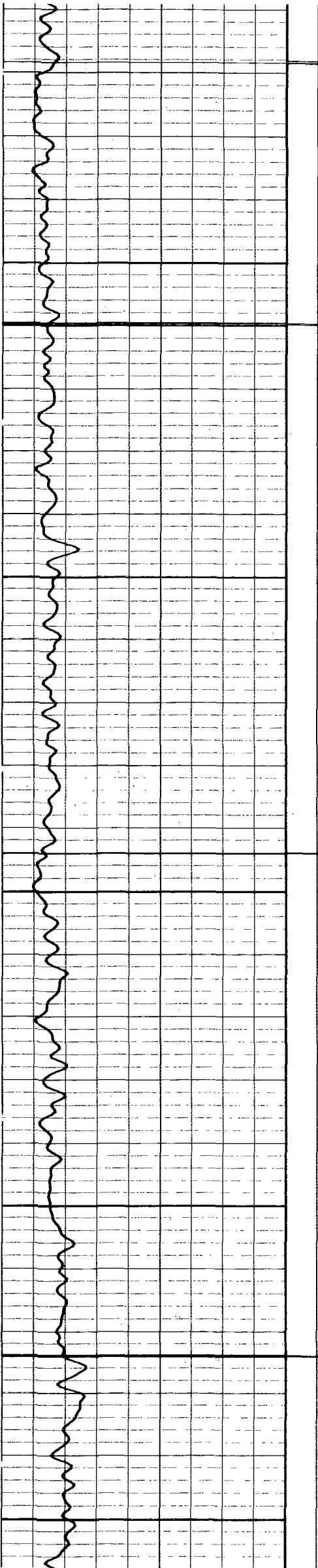




800

900

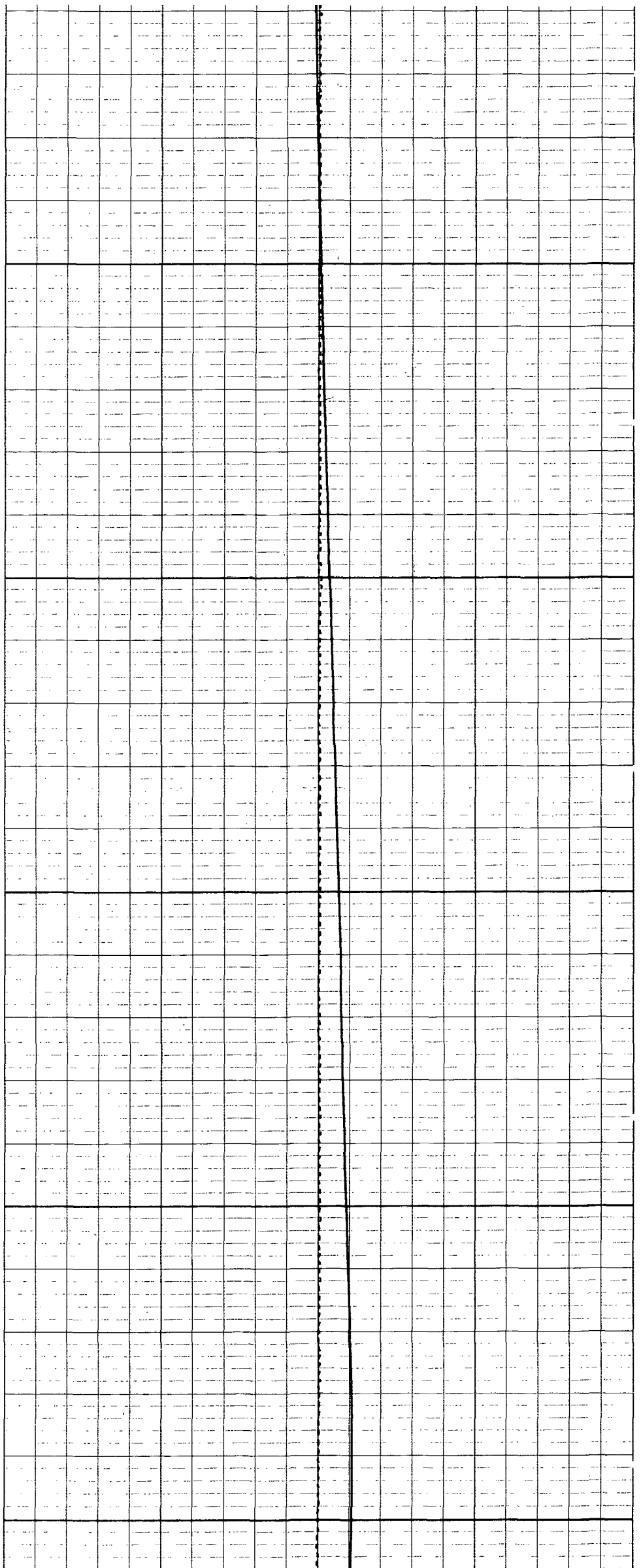


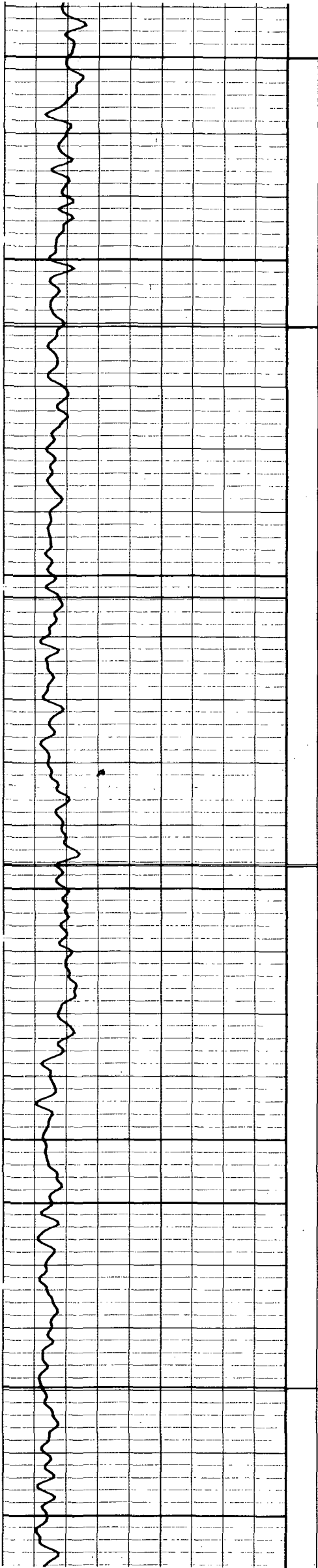


1000

1100

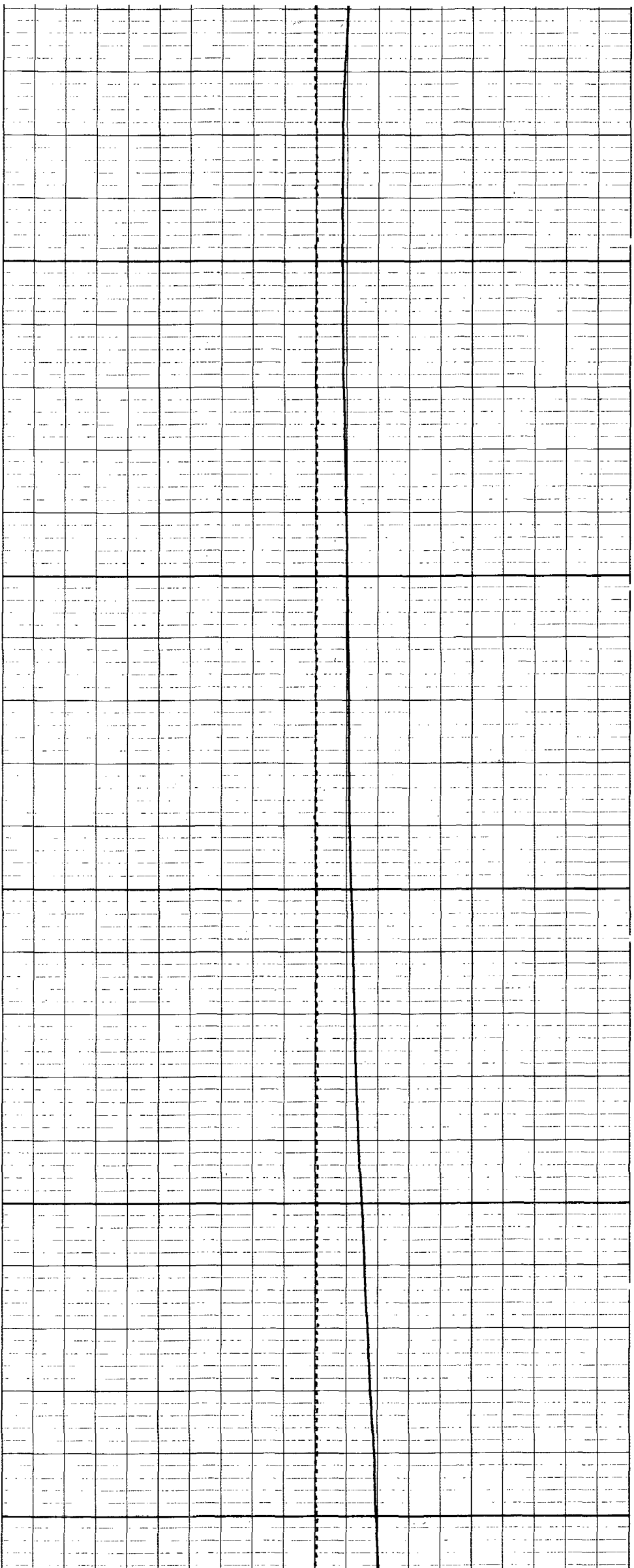
1200

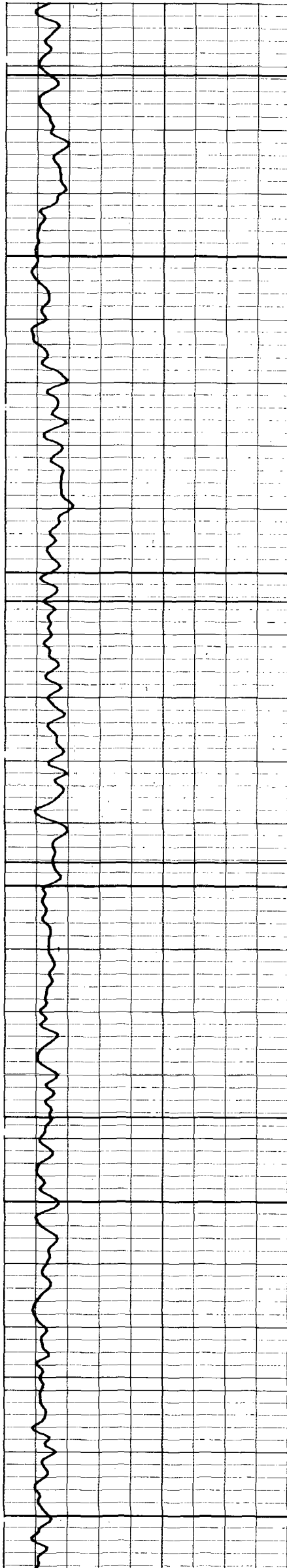




1300

1400

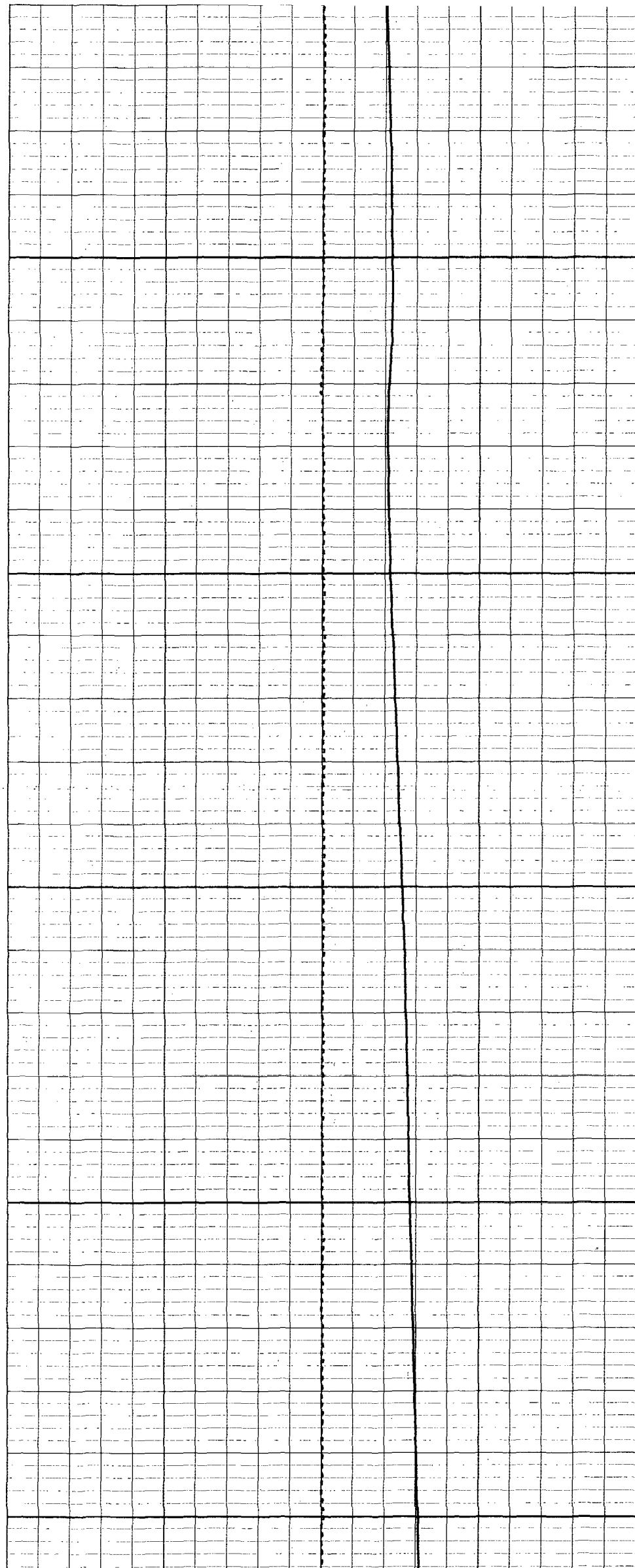


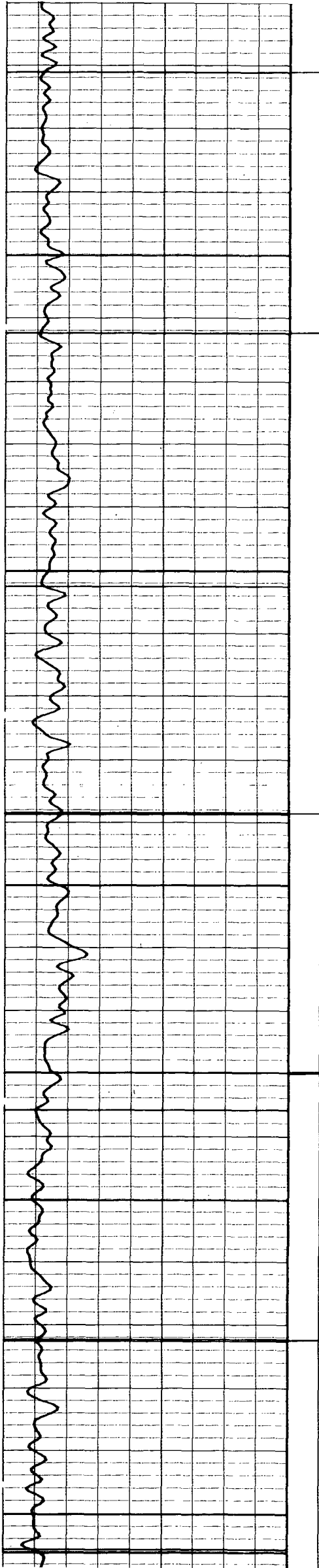


1500

1600

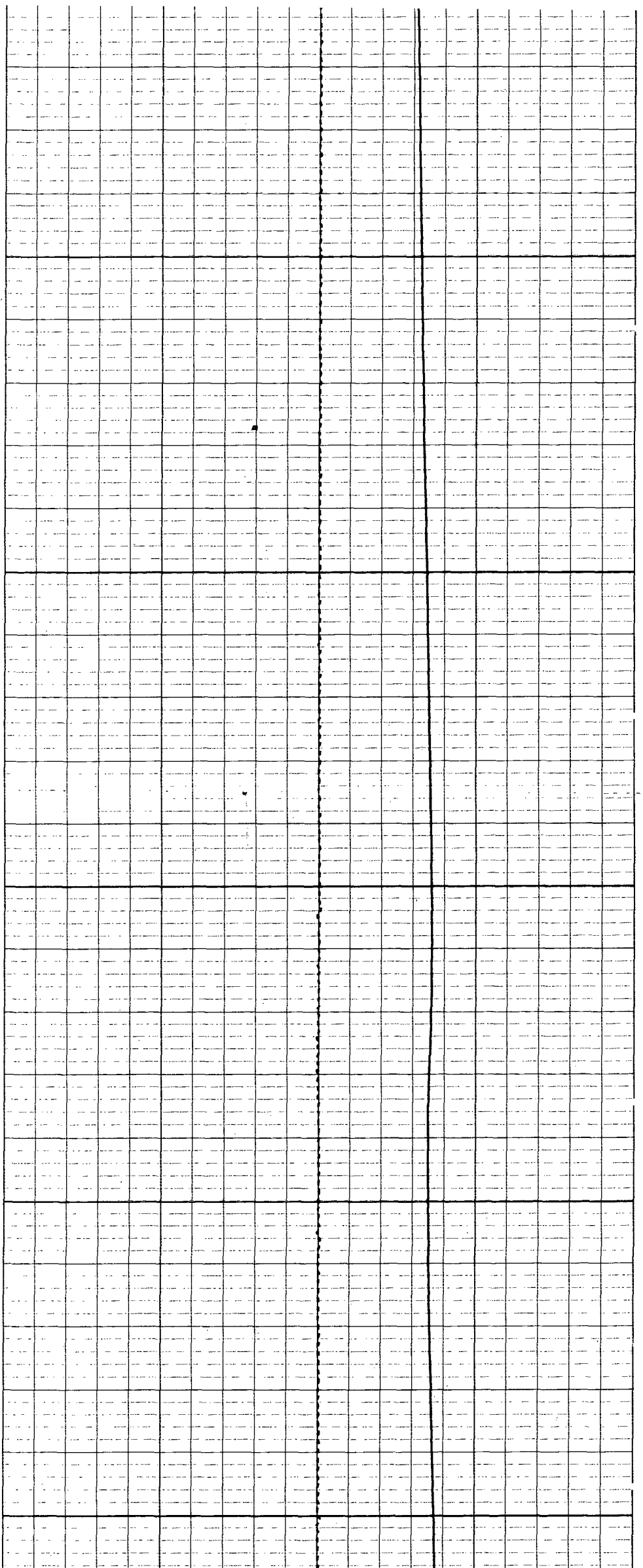
1700

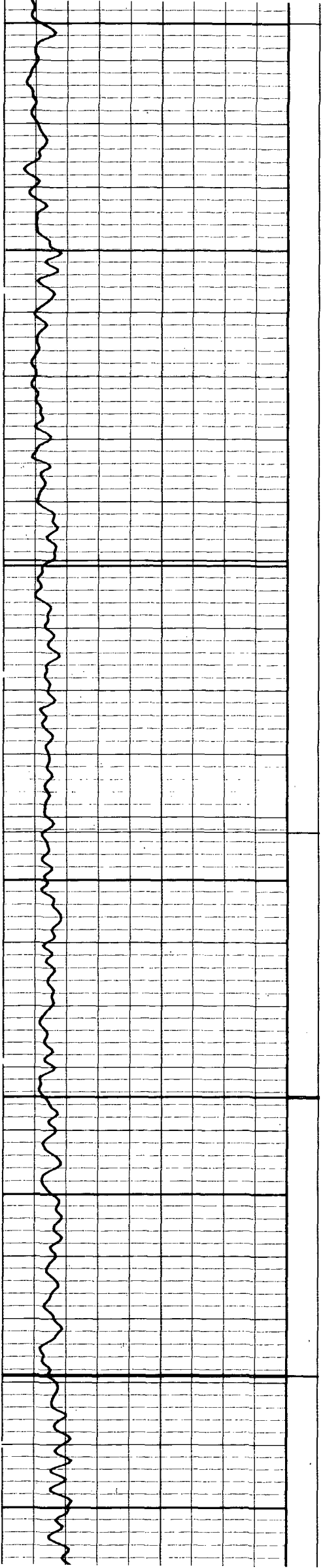




1800

1900

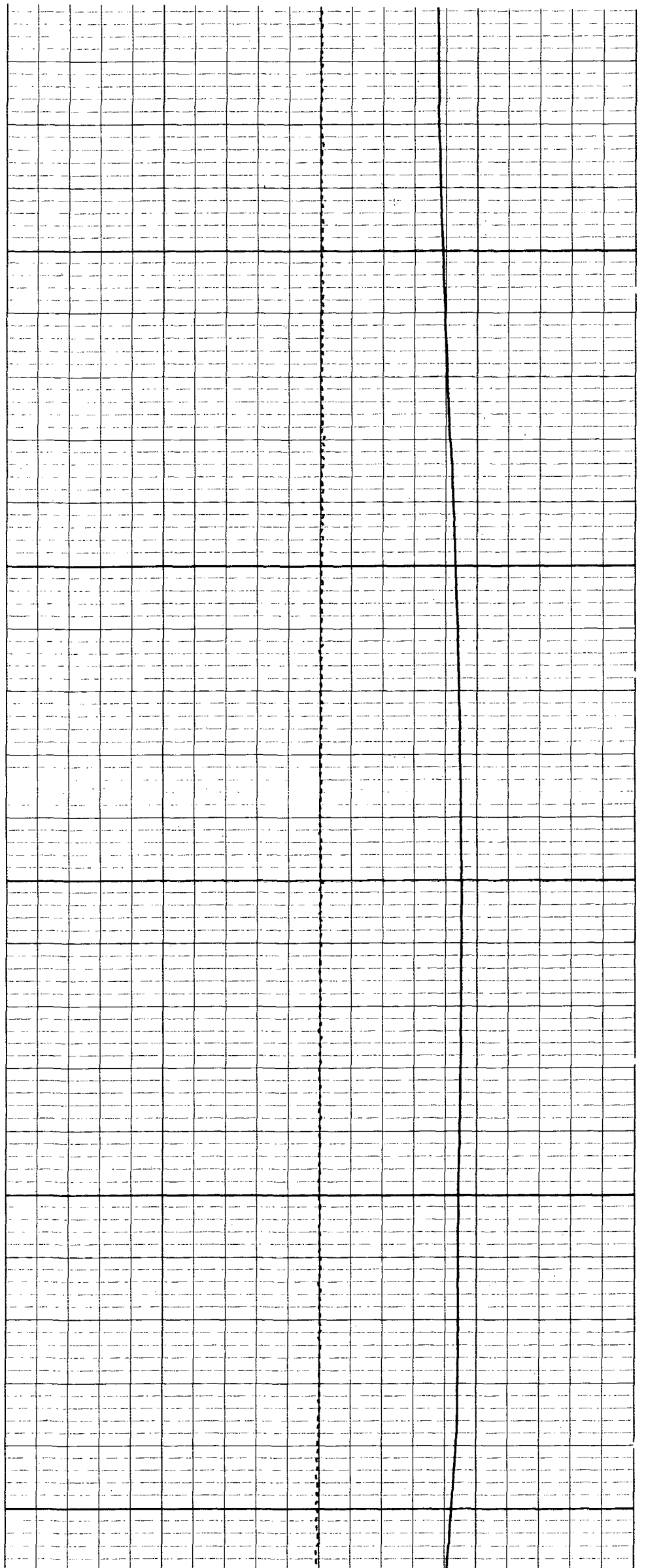


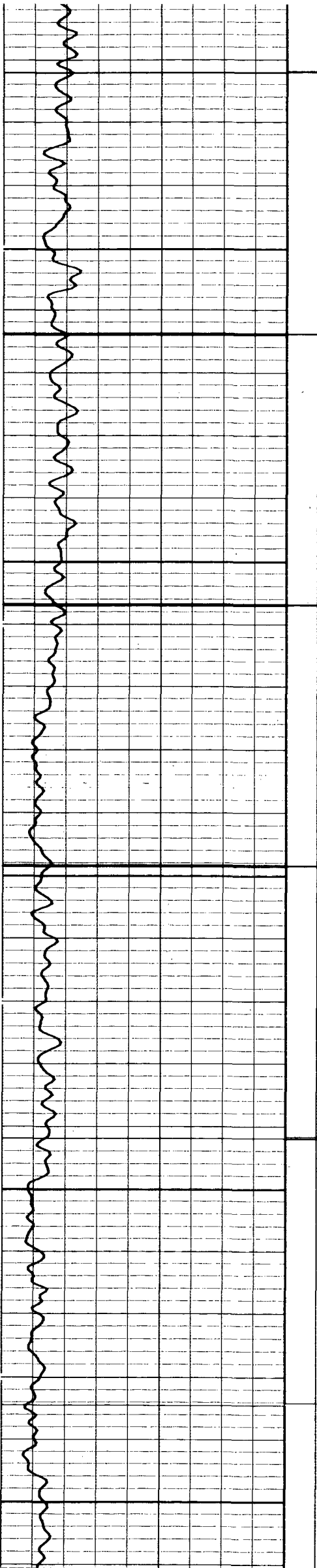


2000

2100

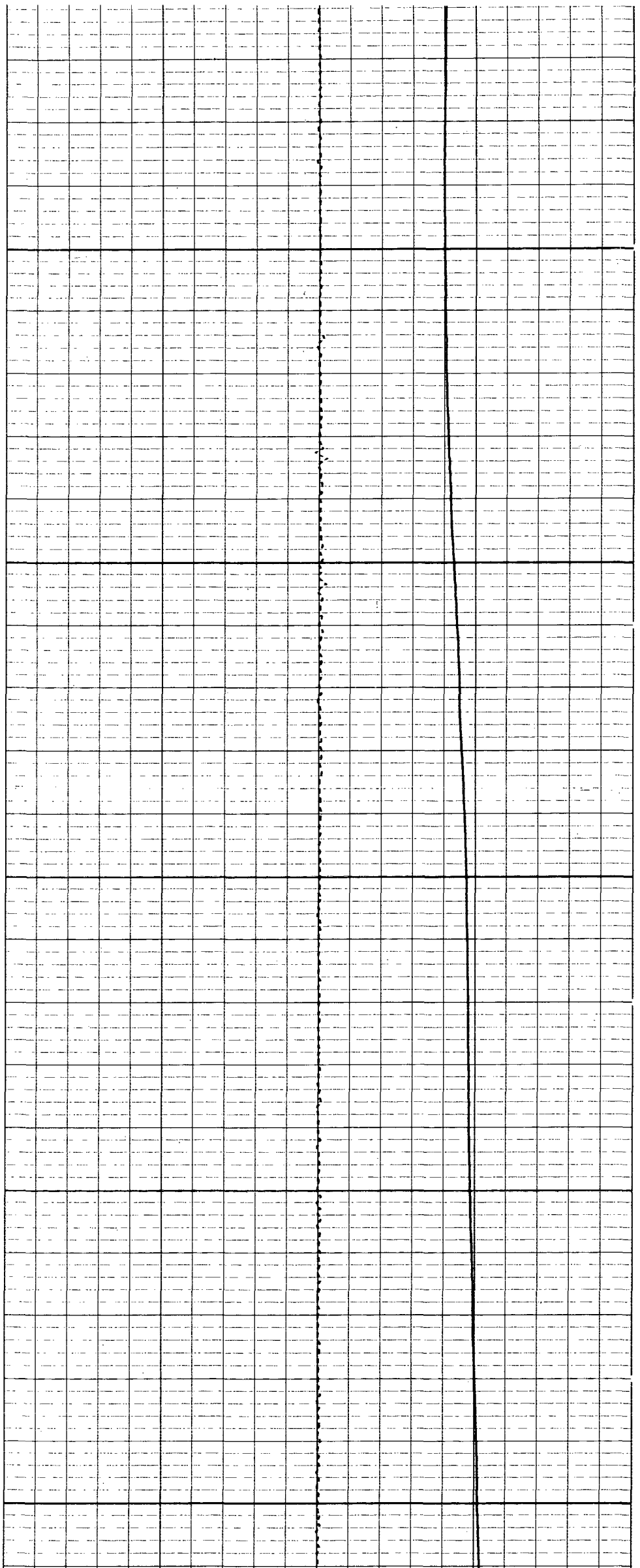
2200

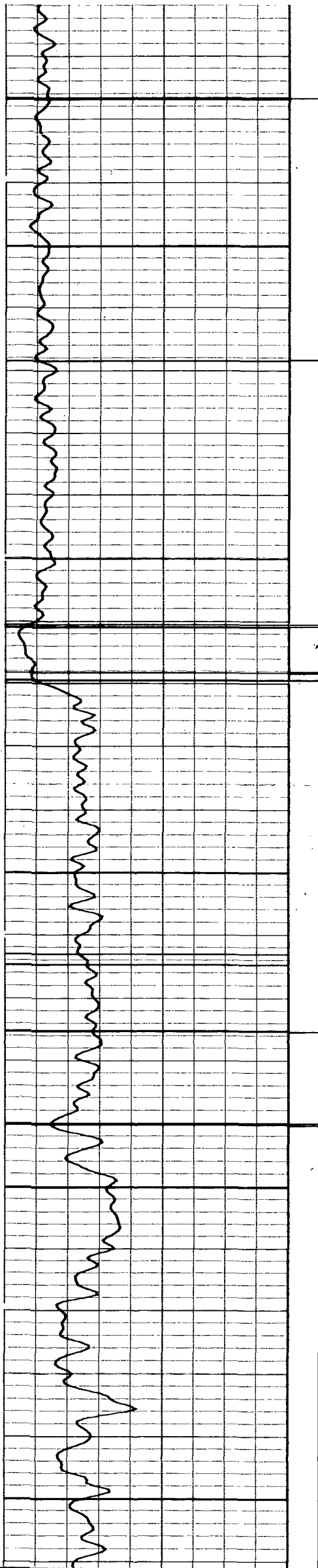




2300

2400

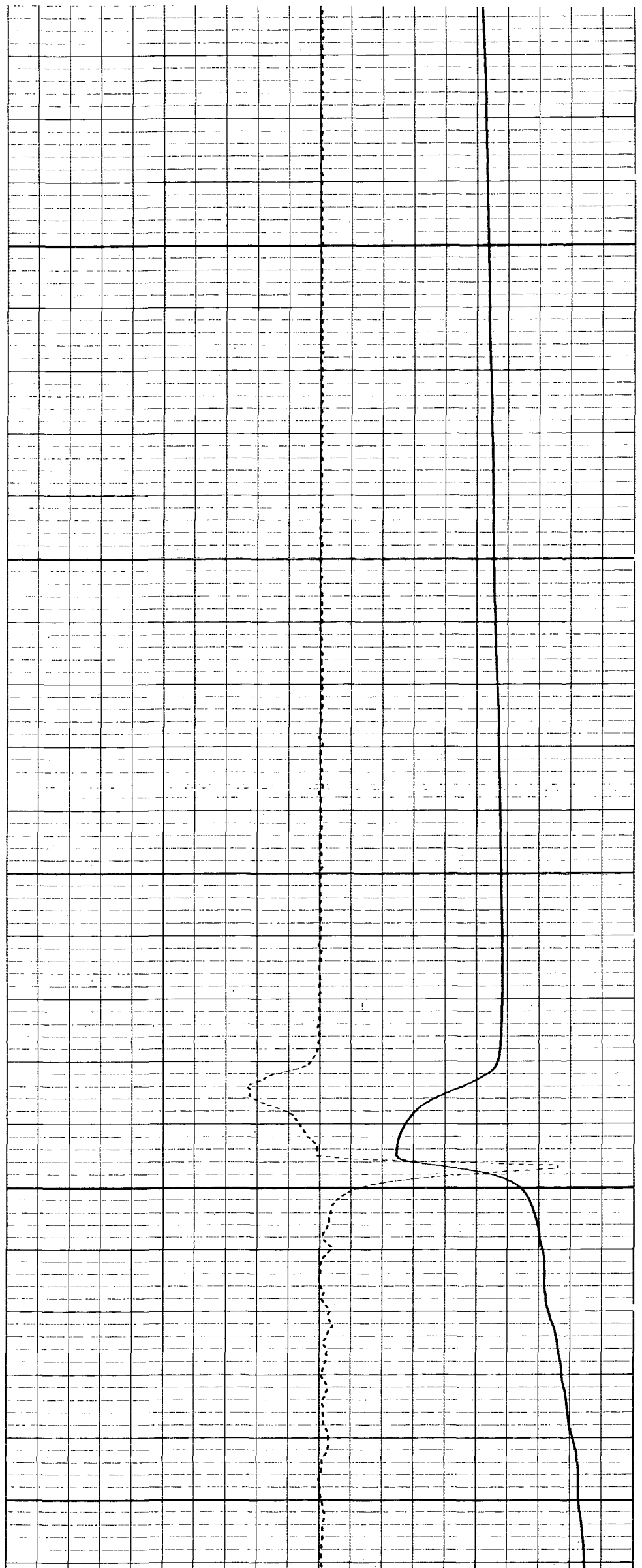


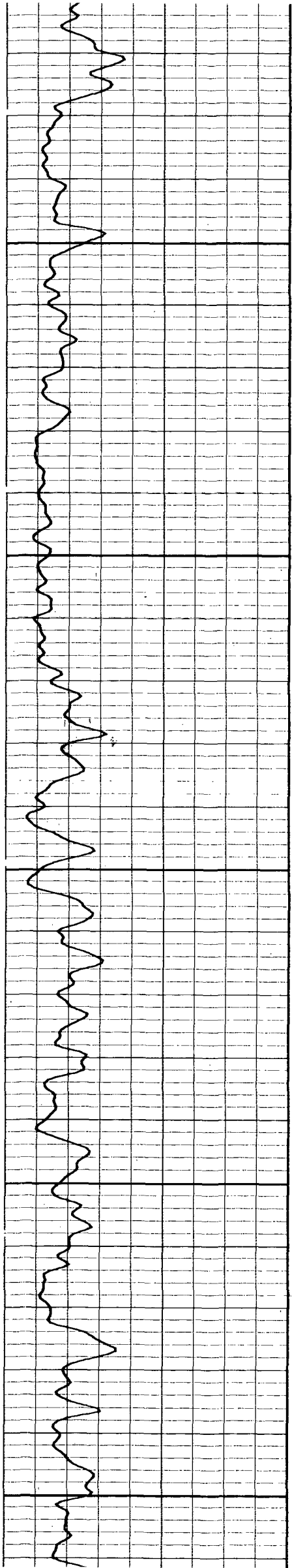


2500

2600

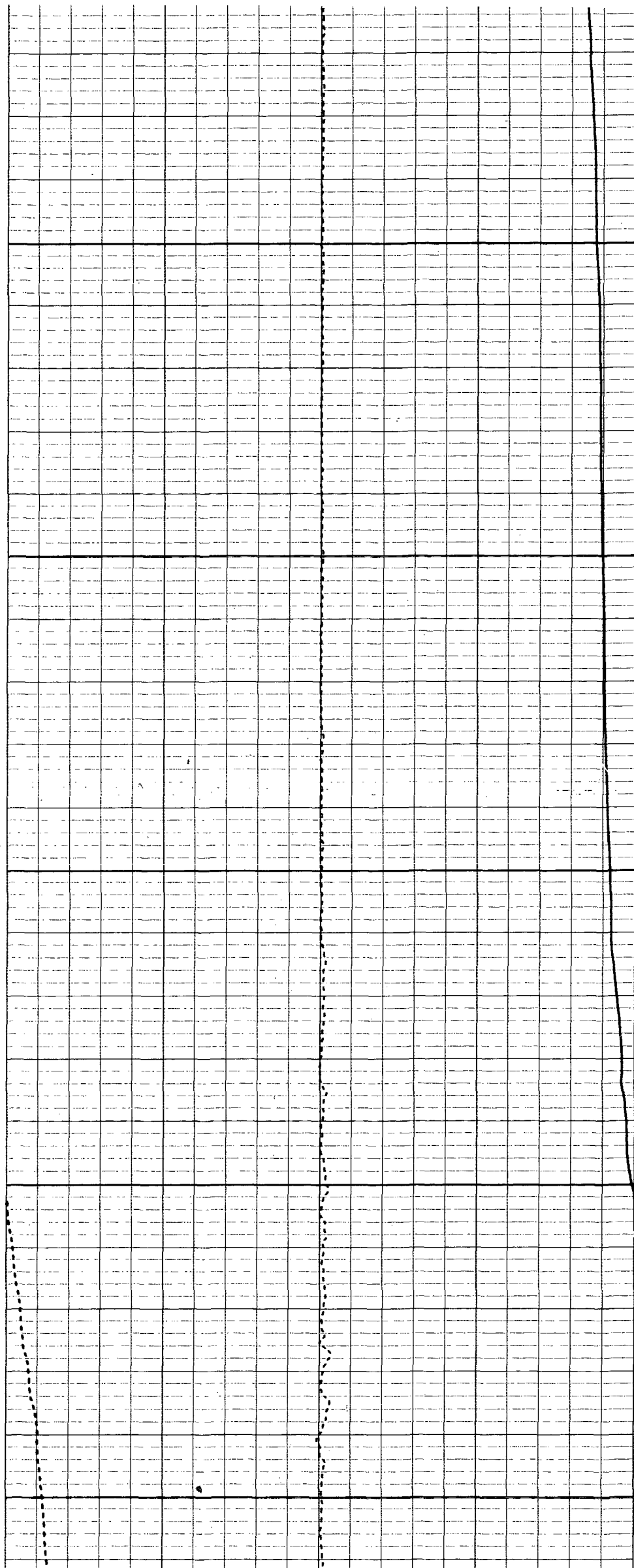
2700

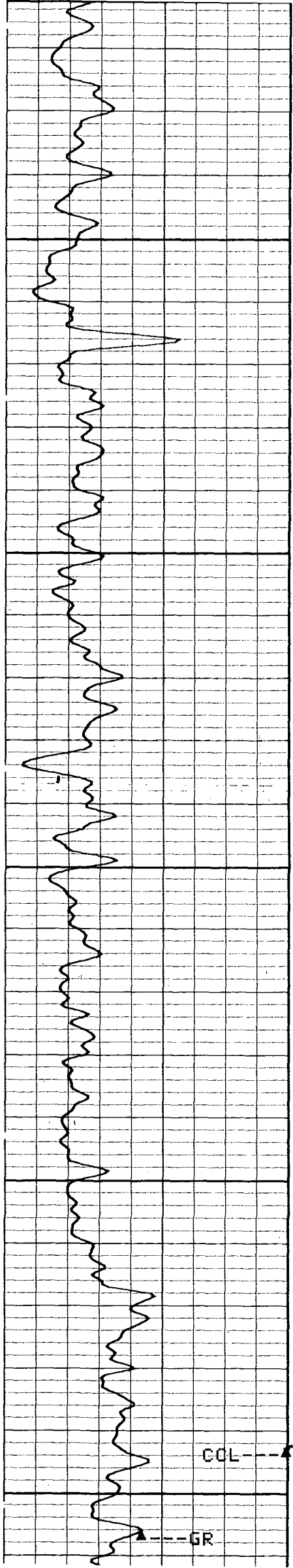




2800

2900

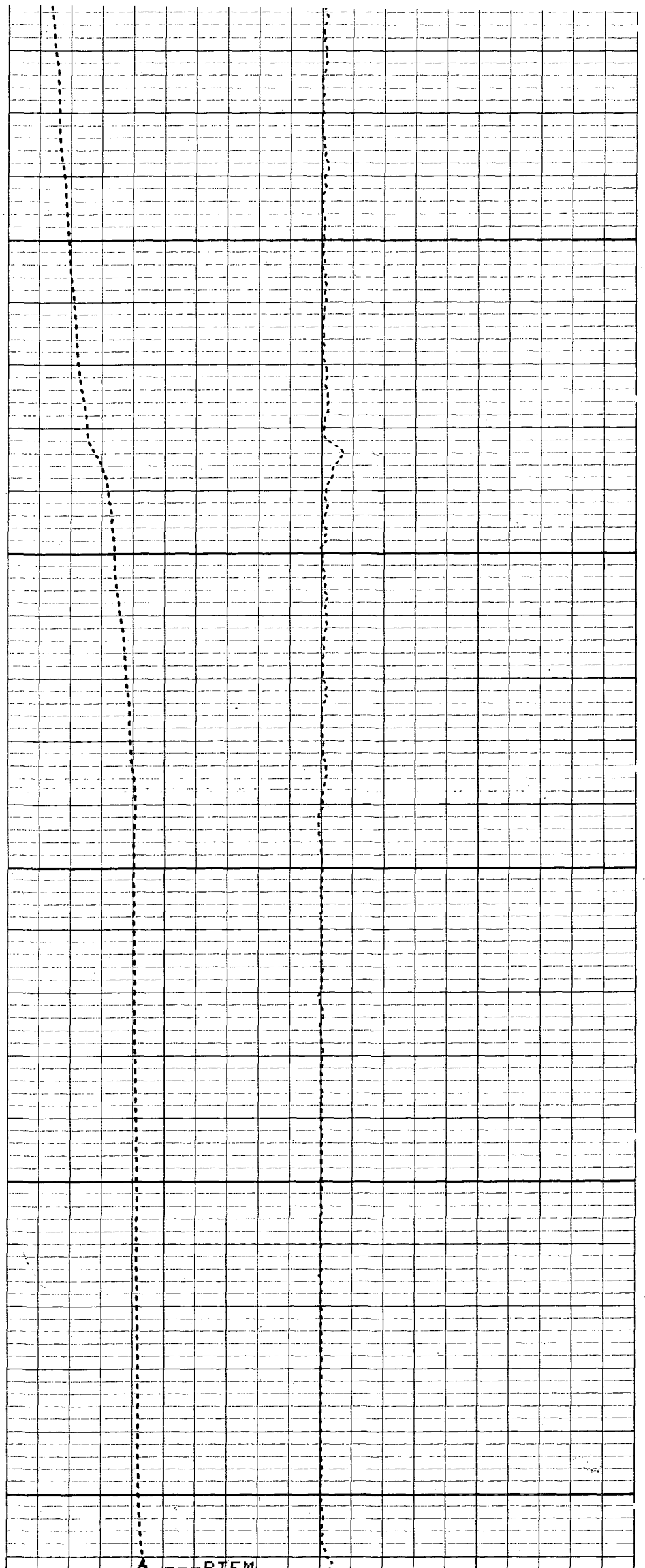


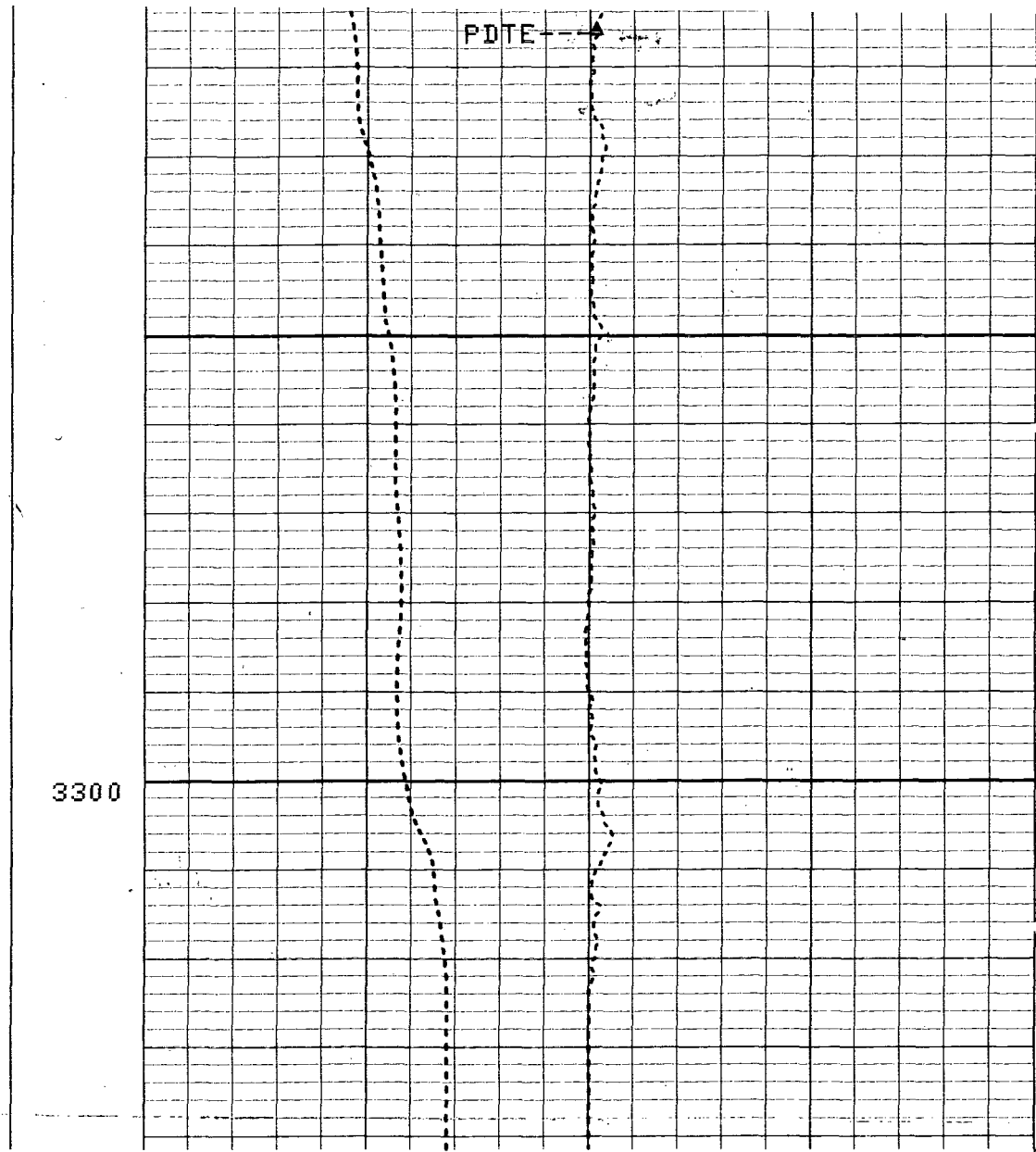
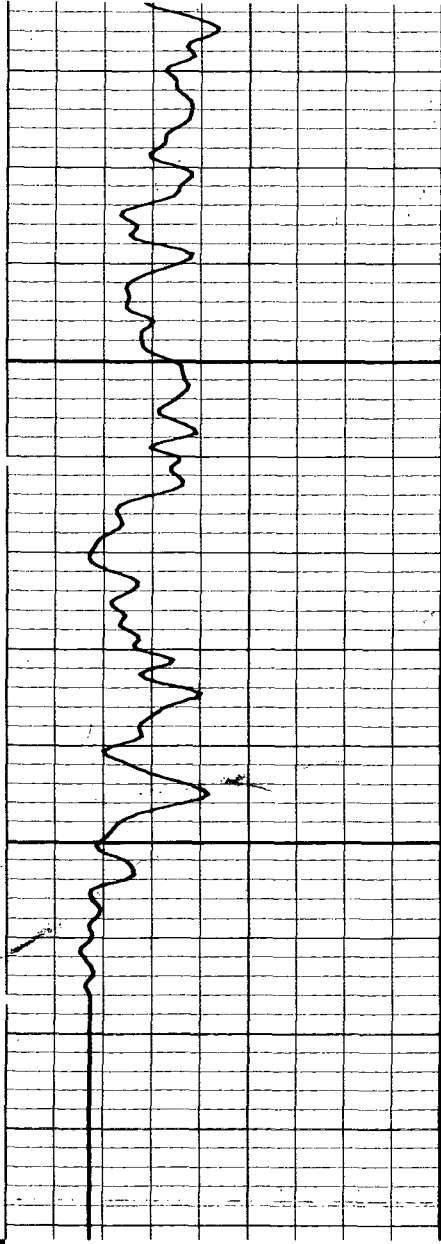


3000

3100

3200





5"/100"

CP 32.6 FILE 4 12-FEB-1992 11:59 (DOWN)

-13.50	1.5000	50.000	70.000
CCL		PTEM(DEGF)	
0.0	100.00	70.000	90.000
GR (GAPI)		PTEM(DEGF)	
		90.000	110.000
		PTEM(DEGF)	
		-1.000	1.0000
		PDTE(DF/F)	

PTS CALIBRATION SUMMARY

WELL-TEMP. VCO CALIBRATION SUMMARY

TVC0=-84.6937 TVC1= 2.67491 TVC2= .001254