



**YOUNGQUIST BROTHERS, Inc**  
GEOPHYSICAL LOGGING DIVISION

**HIGH RESOLUTION TEMPERATURE LOG**  
SOUTH DISTRICT

Company NORTH COLLIER REGIONAL WTP  
Well IW-1  
Field VANDERBILT BEACH RD.  
County COLLIER  
State FL

Company NORTH COLLIER REGIONAL WTP  
Well IW-1  
Field VANDERBILT BEACH RD.  
County COLLIER  
State FL

Location: API #:   
SEC TWP RGE Elevation  
Permanent Datum PAD PAD  
Log Measured From PAD PAD  
Drilling Measured From PAD PAD


Other Services  
RTS  
VIDEO

Date	20-AUG-2009			
Run Number	MIT 2009			
Depth Driller	3300'			
Depth Logger	2680'			
Bottom Logged Interval	SURFACE			
Top Log Interval	SURFACE			
Open Hole Size	20"			
Type Fluid	WATER			
Density / Viscosity	NA			
Max. Recorded Temp.	85 F			
Estimated Cement Top	NA			
Time Well Ready	0800			
Time Logger on Bottom	0830			
Equipment Number	103			
Location	FT MYERS			
Recorded By	FULLER			
Witnessed By	K. PROBST			
Borehole Record		Borehole Record		
Run Number	Bit	From	To	Run No.
Running Record	Surface String	Size	Wgt/Ft	Top
Production String	20"	500" W.T.	FRP	SURFACE
Inner	16"			SURFACE
				Bottom
				2495'
				2375'

<<< Fold Here >>>

All interpretations are opinions based on inferences from electrical or other measurements and we cannot and do not guarantee the accuracy or correctness of any interpretation, and we shall not, except in the case of gross or willful negligence on our part, be liable or responsible for any loss, costs, damages, or expenses incurred or sustained by anyone resulting from any interpretation made by any of our officers, agents or employees. These interpretations are also subject to our general terms and conditions set out in our current Price Schedule.

Comments

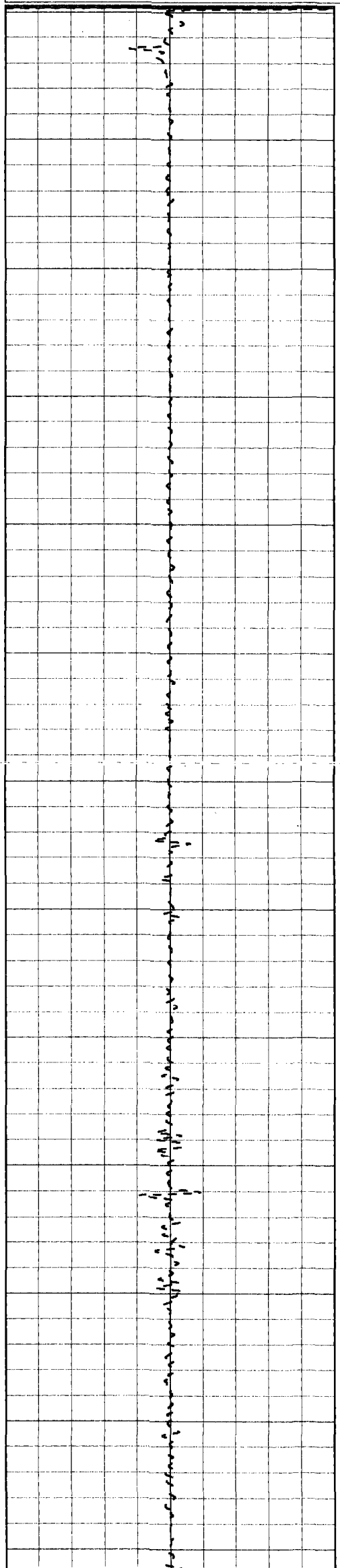


**YOUNGQUIST BROTHERS, Inc**  
GEOPHYSICAL LOGGING DIVISION

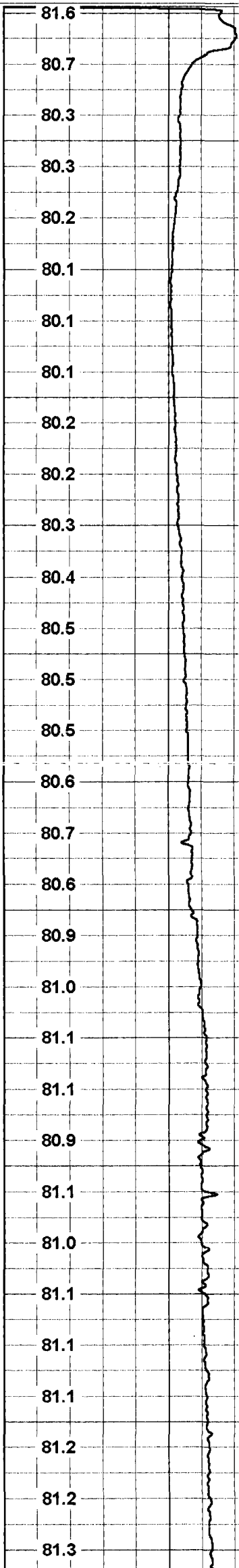
# TEMPERATURE

Database File: vbiw1\_09.db  
 Dataset Pathname: temp  
 Presentation Format: temp  
 Dataset Creation: Thu Aug 20 07:33:16 2009 by Log 6.2\_B4  
 Charted by: Depth in Feet scaled 1:600

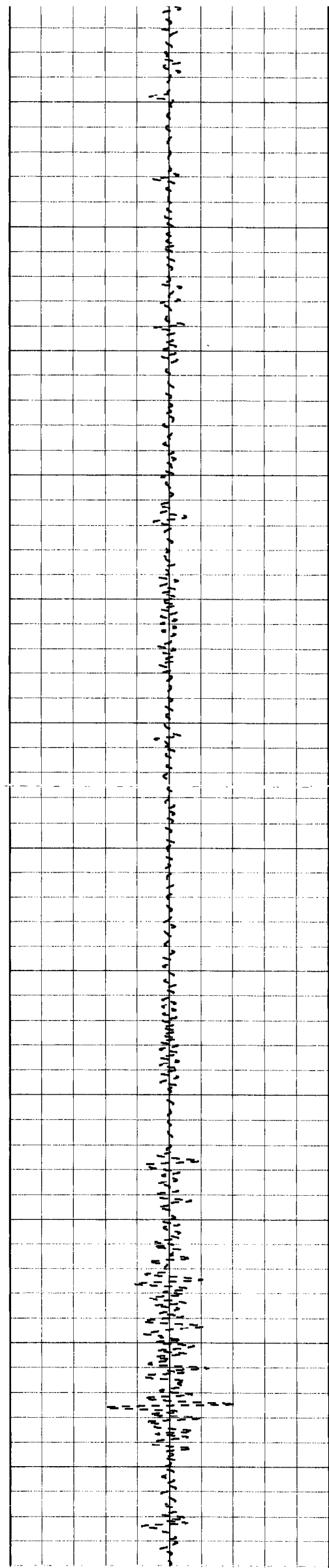
(degF)



0  
50  
100  
150  
200  
250  
300  
350  
400  
450  
500  
550  
600

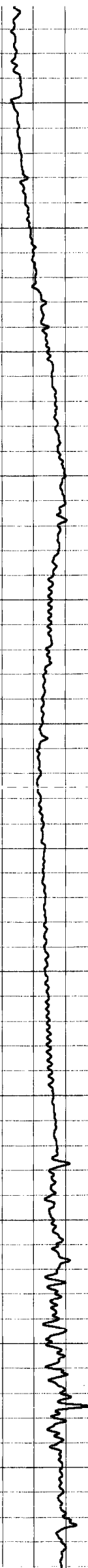


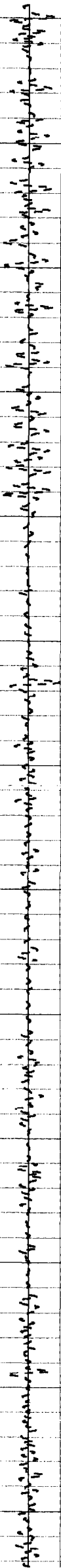
81.6  
80.7  
80.3  
80.3  
80.2  
80.1  
80.1  
80.1  
80.2  
80.2  
80.3  
80.4  
80.5  
80.5  
80.5  
80.6  
80.7  
80.6  
80.9  
81.0  
81.1  
81.1  
80.9  
81.1  
81.0  
81.1  
81.1  
81.2  
81.2  
81.3



650  
700  
750  
800  
850  
900  
950  
1000  
1050  
1100  
1150  
1200

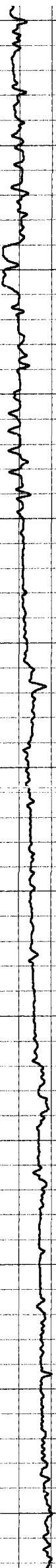
81.4  
81.6  
81.5  
81.8  
81.9  
82.0  
82.5  
82.6  
82.7  
83.0  
82.8  
82.6  
82.5  
82.3  
82.3  
82.2  
82.3  
82.3  
82.4  
82.4  
82.4  
82.5  
82.7  
82.5  
82.6  
82.7  
82.8  
82.5  
82.7  
82.9  
82.9  
82.9

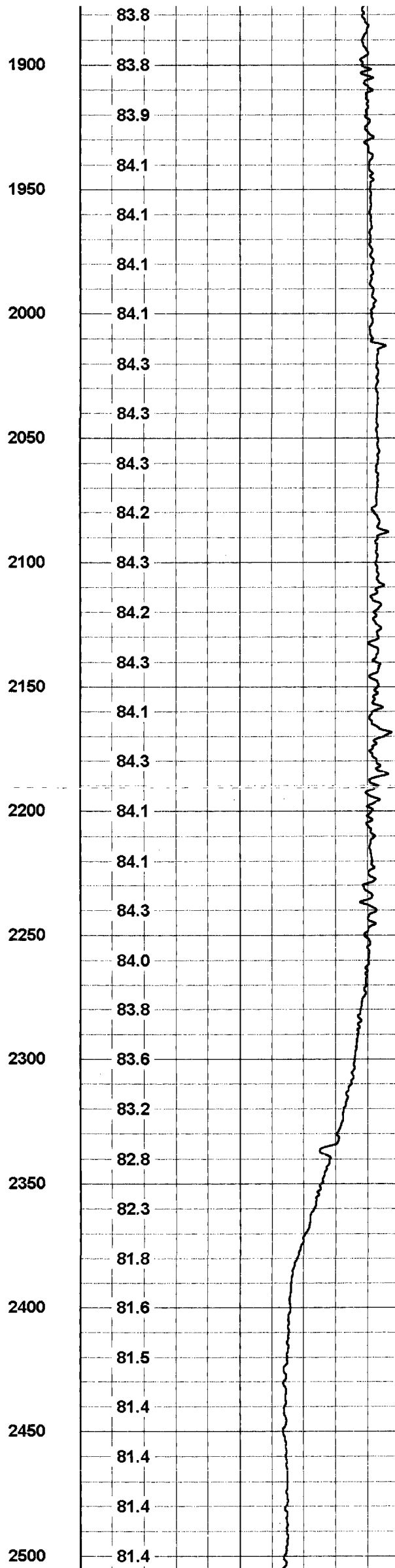
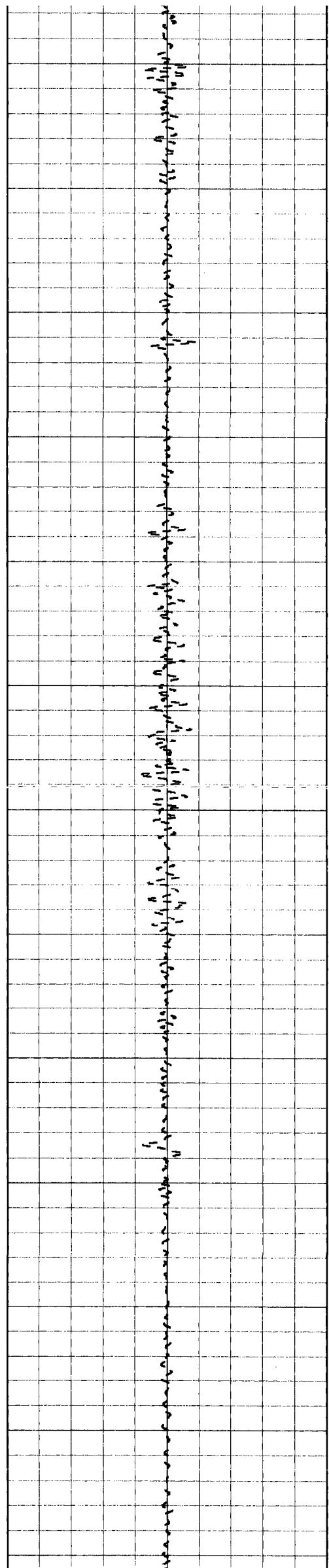


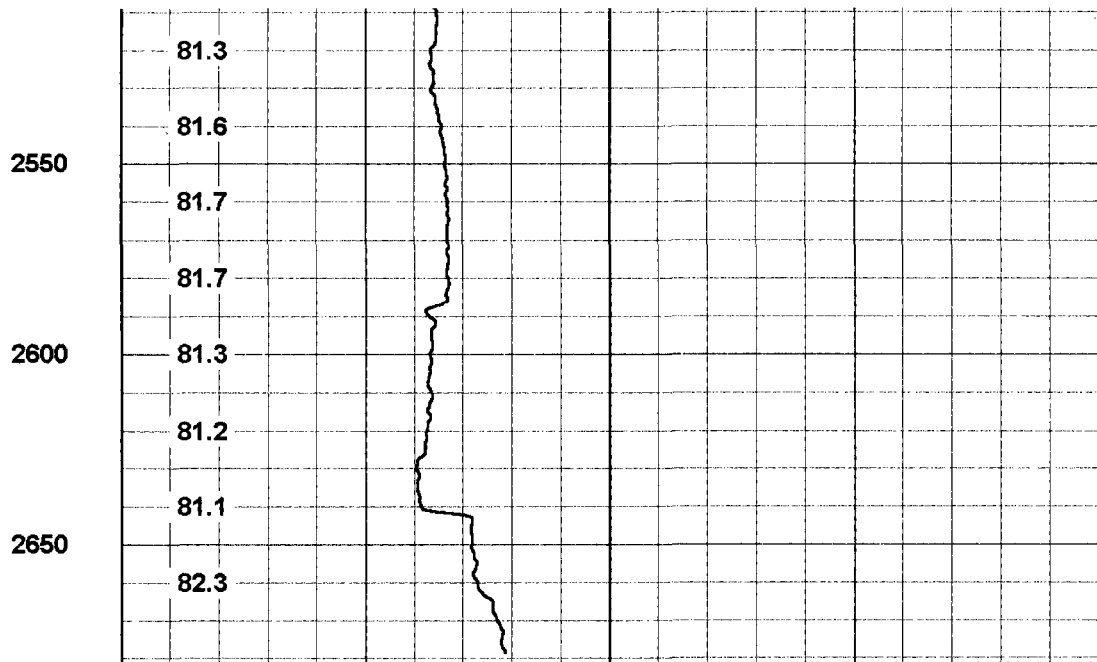
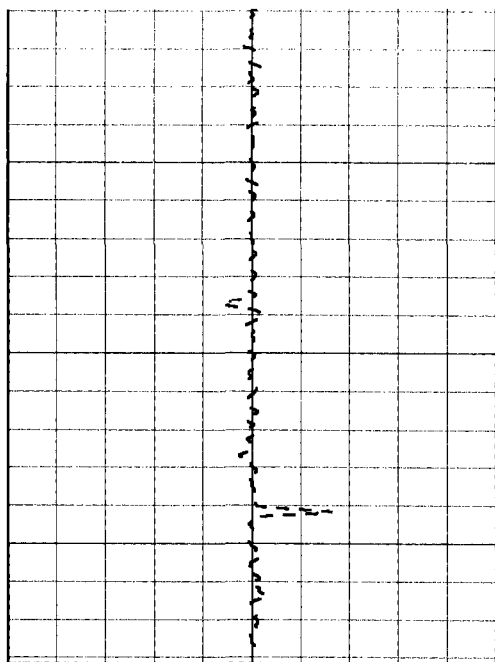


1250  
1300  
1350  
1400  
1450  
1500  
1550  
1600  
1650  
1700  
1750  
1800  
1850

82.9  
83.0  
82.9  
83.1  
82.7  
83.0  
83.0  
82.8  
83.0  
83.3  
83.1  
83.2  
83.2  
83.4  
83.3  
83.3  
83.4  
83.4  
83.4  
83.4  
83.5  
83.5  
83.6  
83.6  
83.6  
83.6  
83.7  
83.6  
83.7  
83.7  
83.7  
83.7  
83.8  
83.8



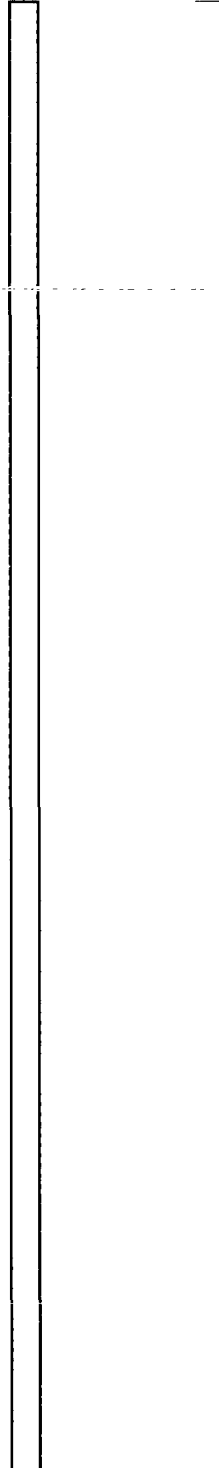




-2 DELTA TEMPERATURE (degF) 2

75 TEMPERATURE (degF) 95

EMPERATUR  
(degF)

Sensor	Offset (ft)	Schematic	Description	Len (ft)	OD (in)	Wt (lb)
			TEMP-RTS (954)	25.50	1.69	70.00

TEMP 0.10

Dataset: vbiw1\_09.db: field/well/run1/temp  
Total Length: 25.50 ft  
Total Weight: 70.00 lb  
O.D. 1.69 in

Calibration Report

Database File: vbiw1\_09.db  
Dataset Pathname: temp  
Dataset Creation: Thu Aug 20 07:33:16 2009 by Log 6.2\_B4

Temperature Calibration Report

Serial Number: 954  
Tool Model: RTS  
Performed: Mon Mar 16 16:57:31 2009

Point #	Reading		Reference	
1	338	cps	34	degF
2	789.32	cps	78	degF
3	1553.26	cps	152	degF
4		cps		degF
5		cps		degF
6		cps		degF
7		cps		degF
8		cps		degF
9		cps		degF
10		cps		degF