



FLORIDA

GEOPHYSICAL LOGGING, INC.

HIGH RESOLUTION
TEMPERATURE
LOG

COMPANY MISSIMER INTERNATIONAL

WELL NCRWTP IW #2

FIELD NORTH COLLIER

COUNTY COLLIER

STATE FLORIDA

LOCATION _____

OTHER SERVICES:
XY CALIPER
DIL
FLOWMETER
BHC

FILE NO. _____

SEC. _____ TWP _____ RGE _____

ELEV. _____

ELEV.: K.B. _____

LOG MEASURED FROM P.L. FT. ABOVE PERMANENT DATUM

DRILLING MEASURED FROM P.L.

D.F. _____

G.L. _____

DATE 13-JANUARY-1996

RUN NO. NINE

TYPE LOG HRT

DEPTH-DRILLER 2550'

DEPTH-LOGGER 2546'

LOGGED INTERVAL 2546' TO 1300'

OPERATING RIG TIME 1.5 HOURS

TYPE FLUID IN HOLE WATER

SALINITY, PPM CL NA

DENSITY-VISCOSITY NA

LEVEL FULL

MAX. REC. TEMP. DEG F. 91 DEG. F.

EQUIPMENT-LOCATION 101 - FTM

RECORDED BY WILLIAMS

WITNESSED BY ELIZABETH SHAWKEY

BOREHOLE RECORD

CASING RECORD

| RUN NO. | BIT | FROM | TO | SIZE | MGT. | FROM | TO |
|---------|---------|-------|--------|------|---------|-------|---------|
| NINE | 12 1/4" | 2550' | CASING | 52" | .5" WT. | 30' | SURFACE |
| | | | | 38" | .5" WT. | 435' | SURFACE |
| | | | | 30" | .5" WT. | 1310' | SURFACE |

REMARKS

TEMPERATURE TOOL STRING CONFIGURATION



-- CENTRALIZER -- 2 FT. LONG

-- 1 11/16" WEIGHT -- 5 FT. LONG

-- CENTRALIZER -- 2 FT. LONG

-- TEMPERATURE -- 2.5 FT. LONG

-- TOTAL TOOL STRING LENGTH = 11.5 FT.

ALL INTERPRETATIONS ARE OPINIONS BASED ON INFERENCES FROM ELECTRICAL OR OTHER MEASUREMENTS AND WE CANNOT AND DO NOT GUARANTEE THE ACCURACY OR CORRECTNESS OF ANY INTERPRETATION, AND WE SHALL NOT, EXCEPT IN THE CASE OF GROSS OR WILLFULL NEGLIGENCE ON OUR PART, BE LIABLE OR RESPONSIBLE FOR ANY LOSS, COSTS, DAMAGES, OR EXPENSES INCURRED OR SUSTAINED BY ANYONE RESULTING FROM ANY INTERPRETATION MADE BY ANY OF OUR OFFICERS, AGENTS OR EMPLOYEES. THESE INTERPRETATIONS ARE ALSO SUBJECT TO OUR GENERAL TERMS AND CONDITIONS SET OUT IN OUR CURRENT PRICE SCHEDULE.

REMARKS

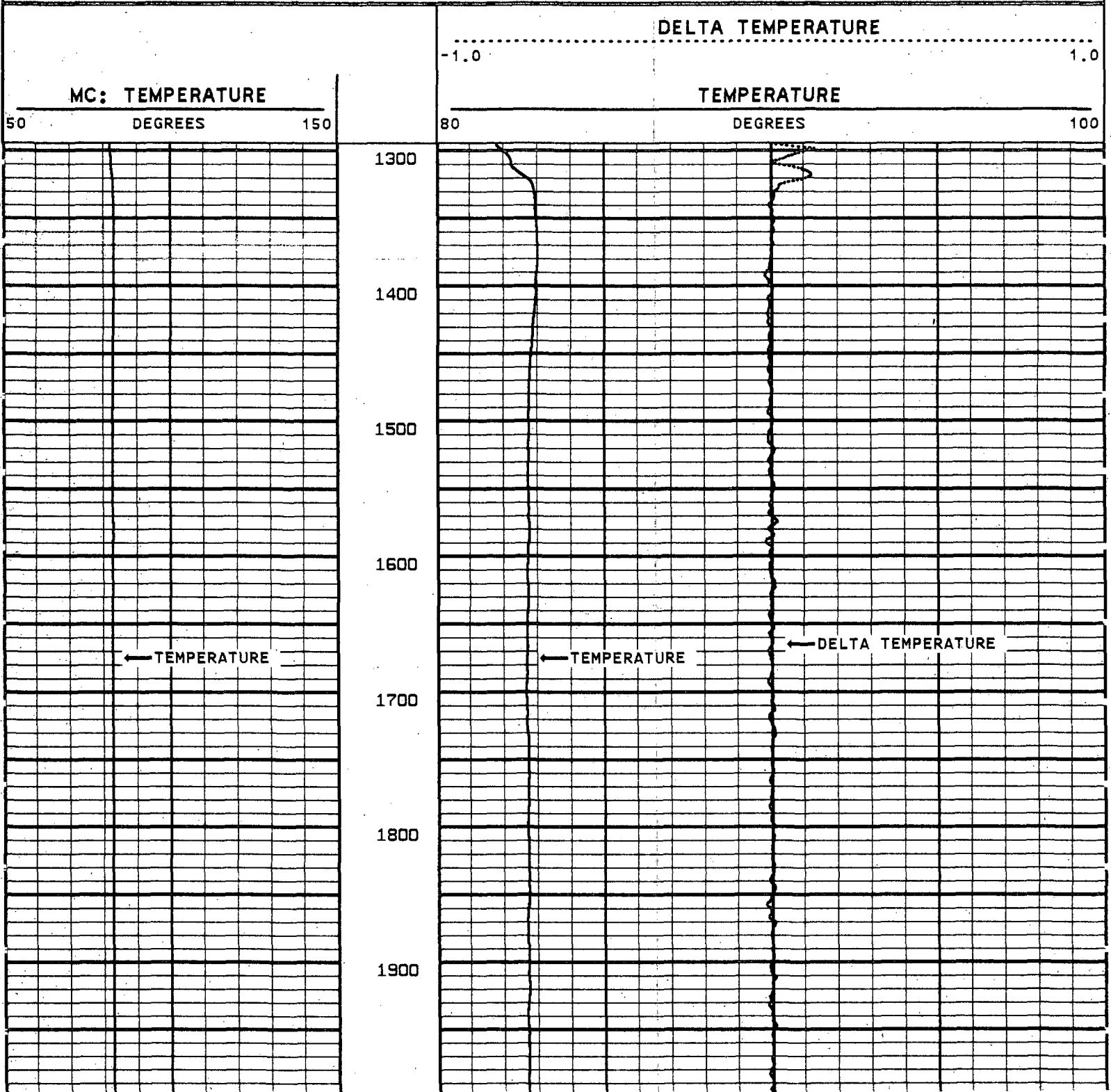
LOGGED GOING DOWNHOLE
FLOW RATE = 50 GPM

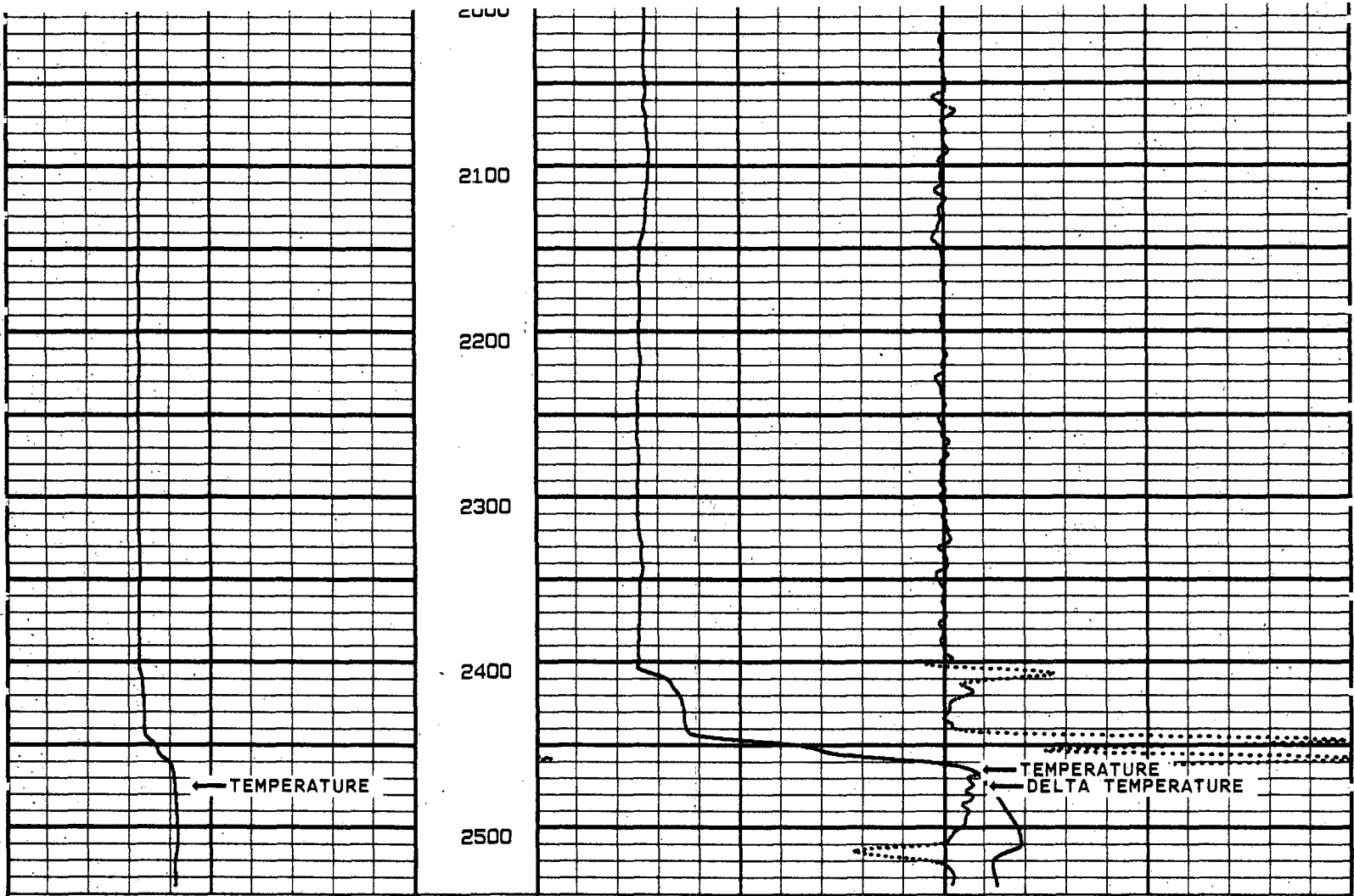
VERSION: 2.26

MAIN PASS

NCIW29TEMP

FINISH DEPTH: 2540.1 FEET DIRECTION: DOWN DATE: 01/14/96 TIME: 02:09:02 MODE: TRACE PLAYBACK





MC: TEMPERATURE
 50 DEGREES 150

TEMPERATURE
 80 DEGREES 100
 DELTA TEMPERATURE
 -1.0 1.0

START DEPTH: 1300.0 FEET DIRECTION: DOWN DATE: 01/14/96 TIME: 01:45:21 MODE: TRACE PLAYBACK
 NCIW29TEMP

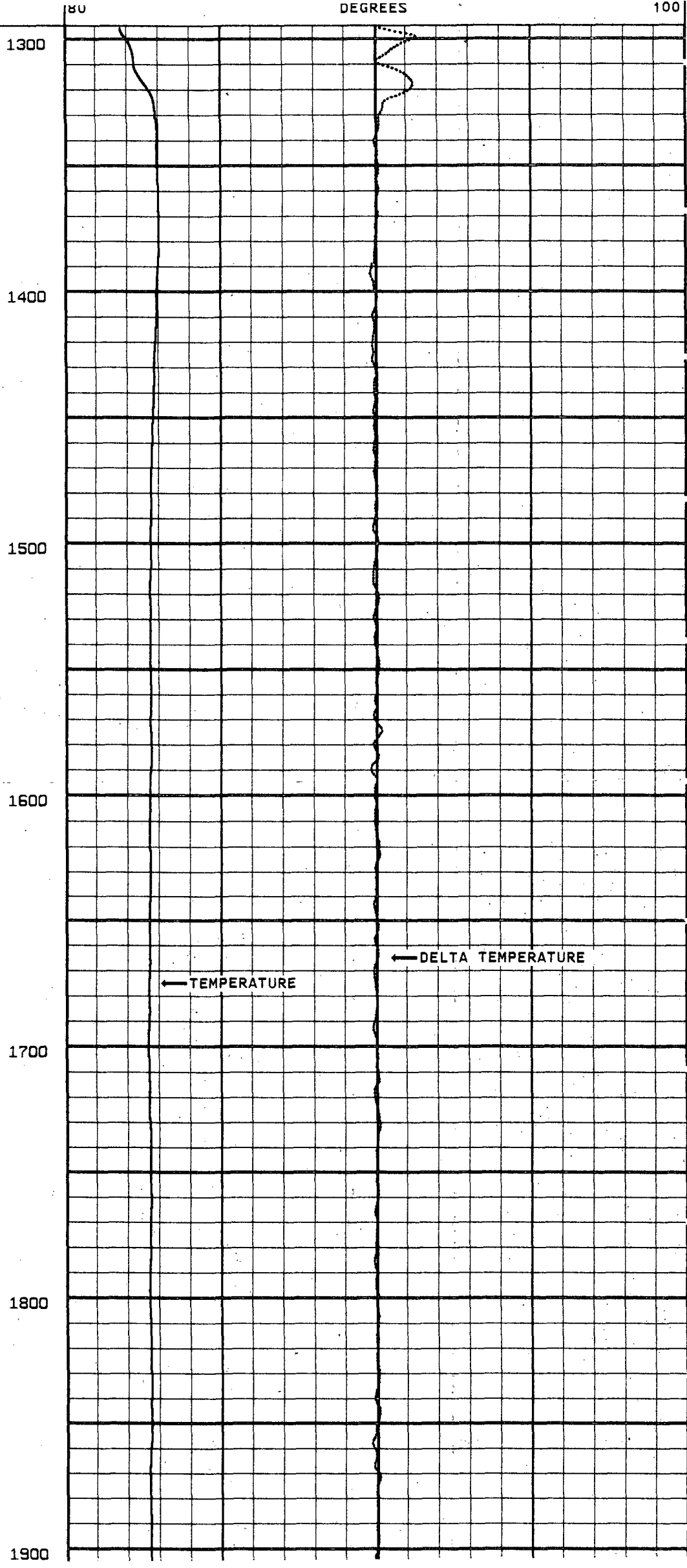
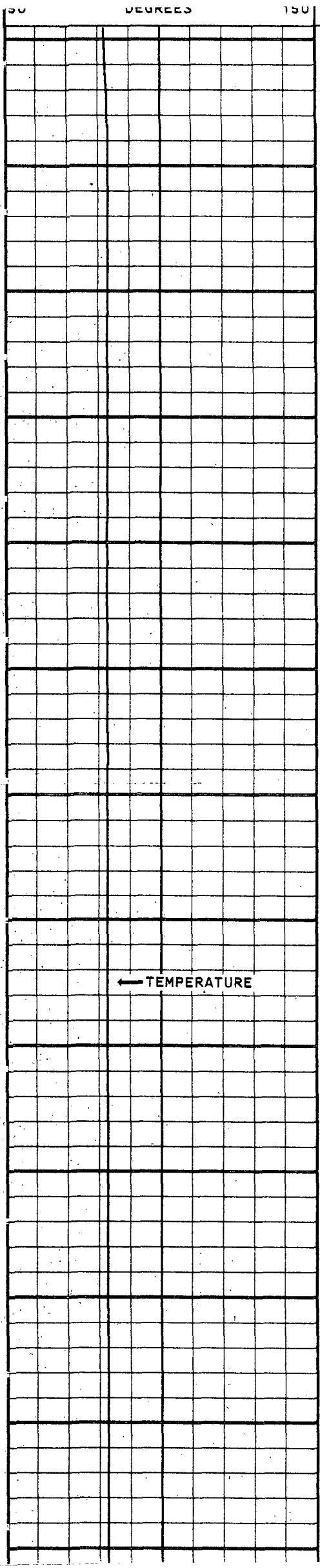
MAIN PASS
 VERSION: 2.26

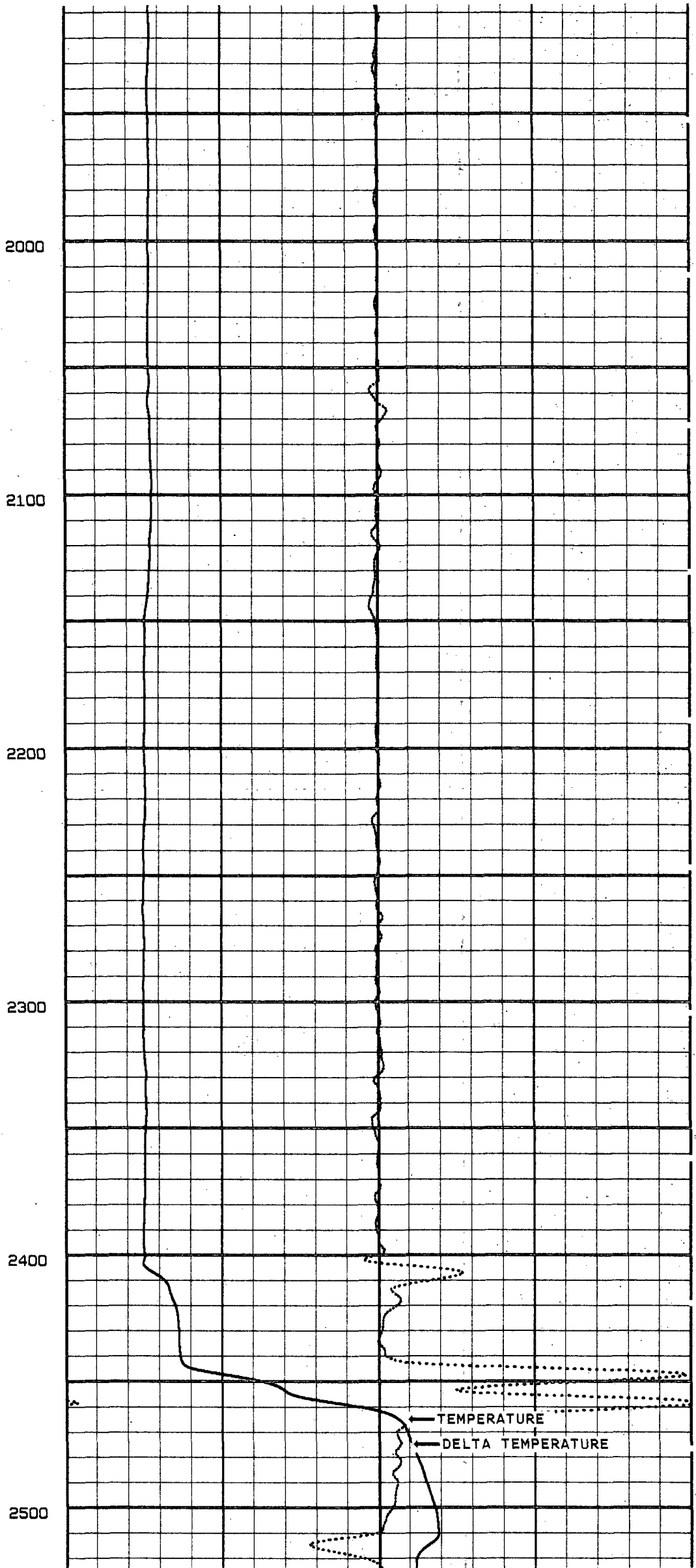
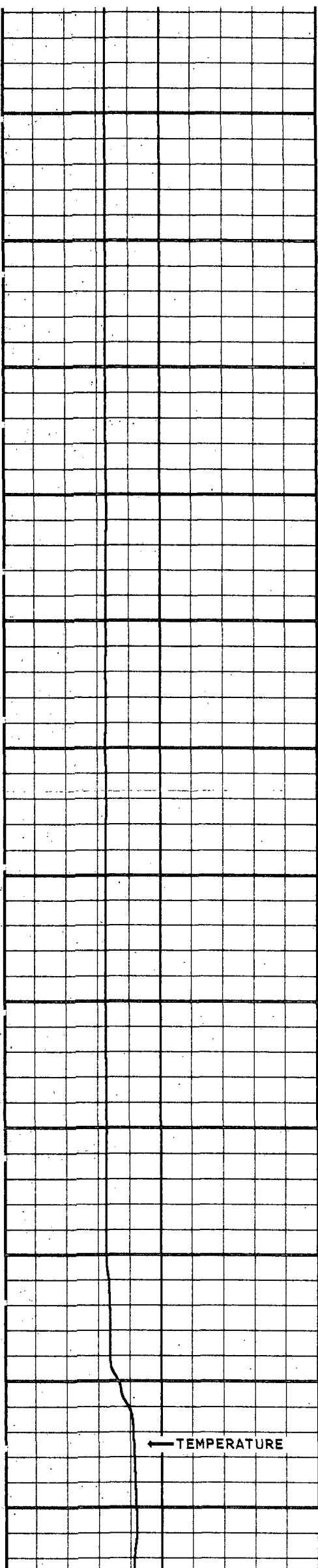
REMARKS
 LOGGED GOING DOWNHOLE
 FLOW RATE = 50 GPM

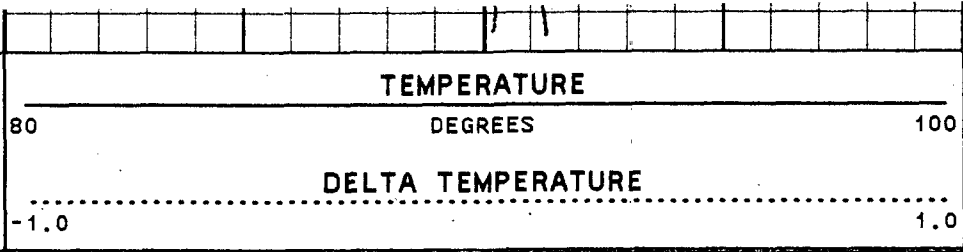
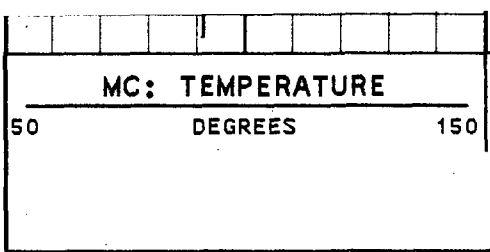
VERSION: 2.26
 MAIN PASS

NCIW29TEMP
 FINISH DEPTH: 2540.1 FEET DIRECTION: DOWN DATE: 01/14/96 TIME: 02:09:02 MODE: TRACE PLAYBACK

MC: TEMPERATURE
 DELTA TEMPERATURE
 -1.0 1.0
 TEMPERATURE







START DEPTH: 1300.0 FEET DIRECTION: DOWN DATE: 01/14/96 TIME: 01:45:21 MODE: TRACE PLAYBACK

NCIW29TEMP

MAIN PASS

VERSION: 2.26

REMARKS

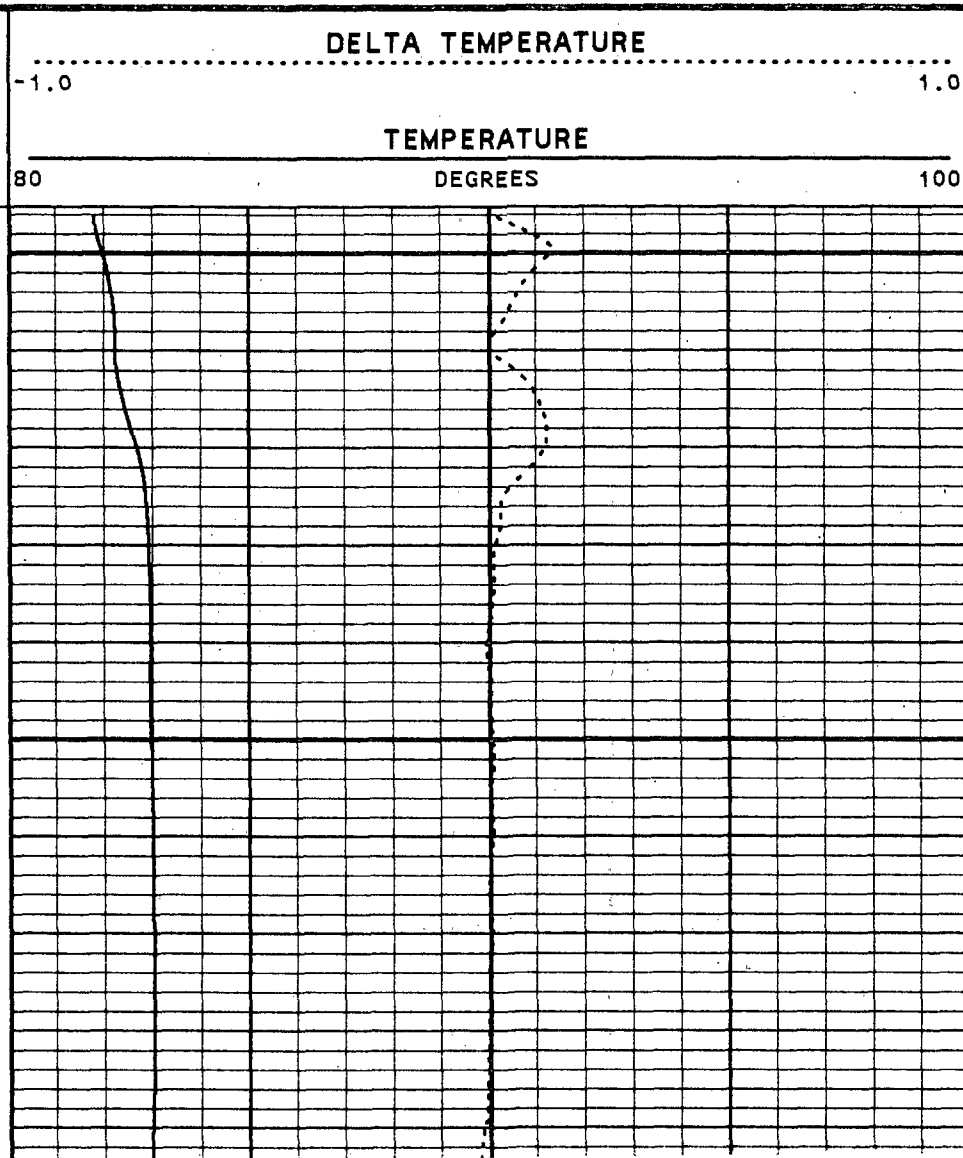
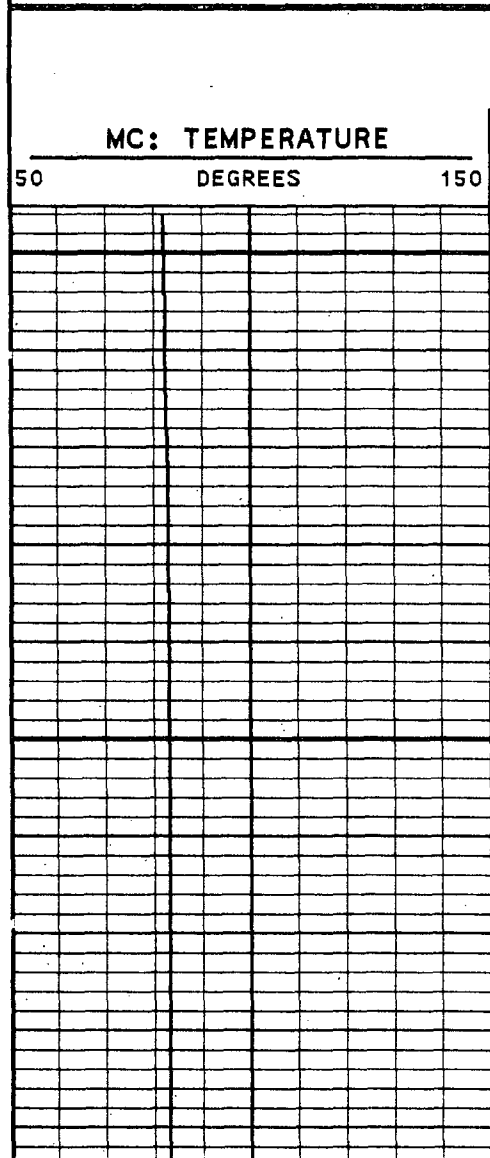
LOGGED GOING DOWNHOLE
FLOW RATE = 50 GPM

VERSION: 2.26

MAIN PASS

NCIW29TEMP

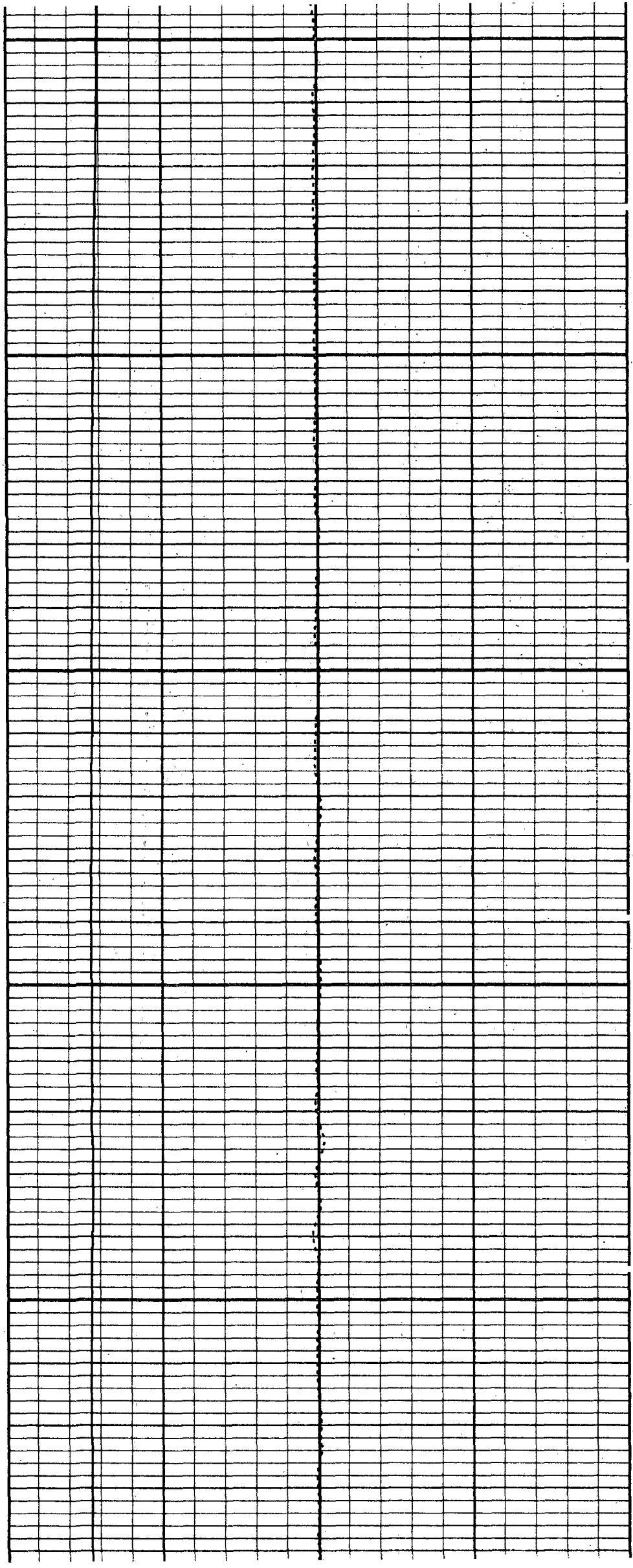
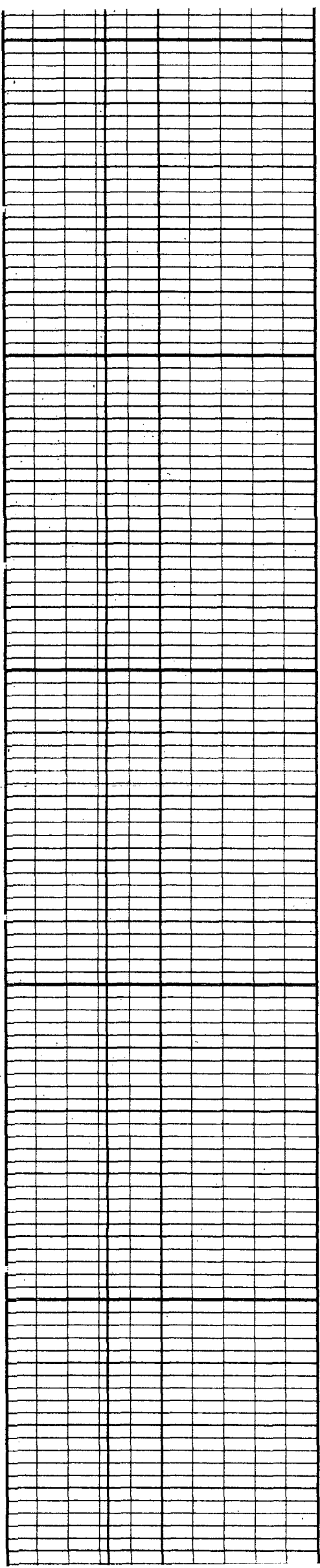
FINISH DEPTH: 2540.1 FEET DIRECTION: DOWN DATE: 01/14/96 TIME: 02:09:02 MODE: TRACE PLAYBACK



1400

1500

1600



← TEMPERATURE

1700

← TEMPERATURE

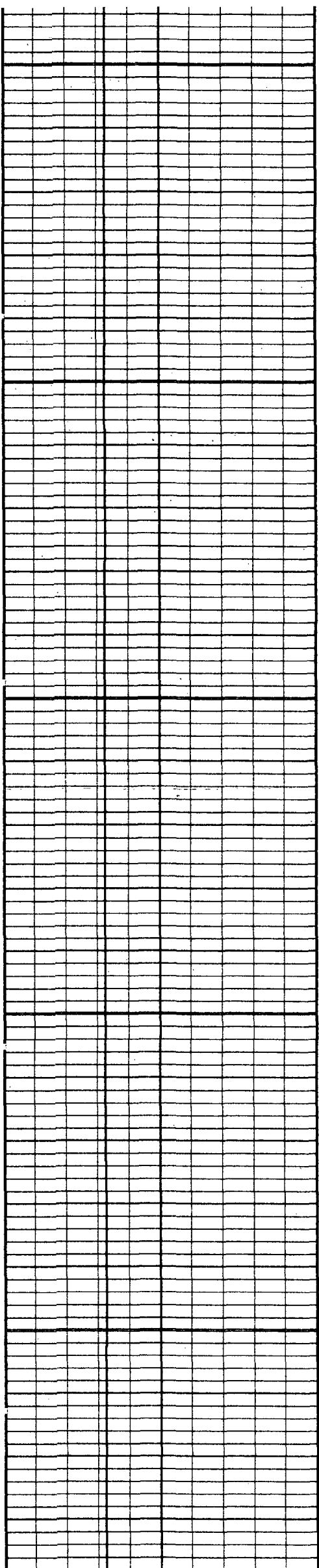
← DELTA TEMPERATURE

1800

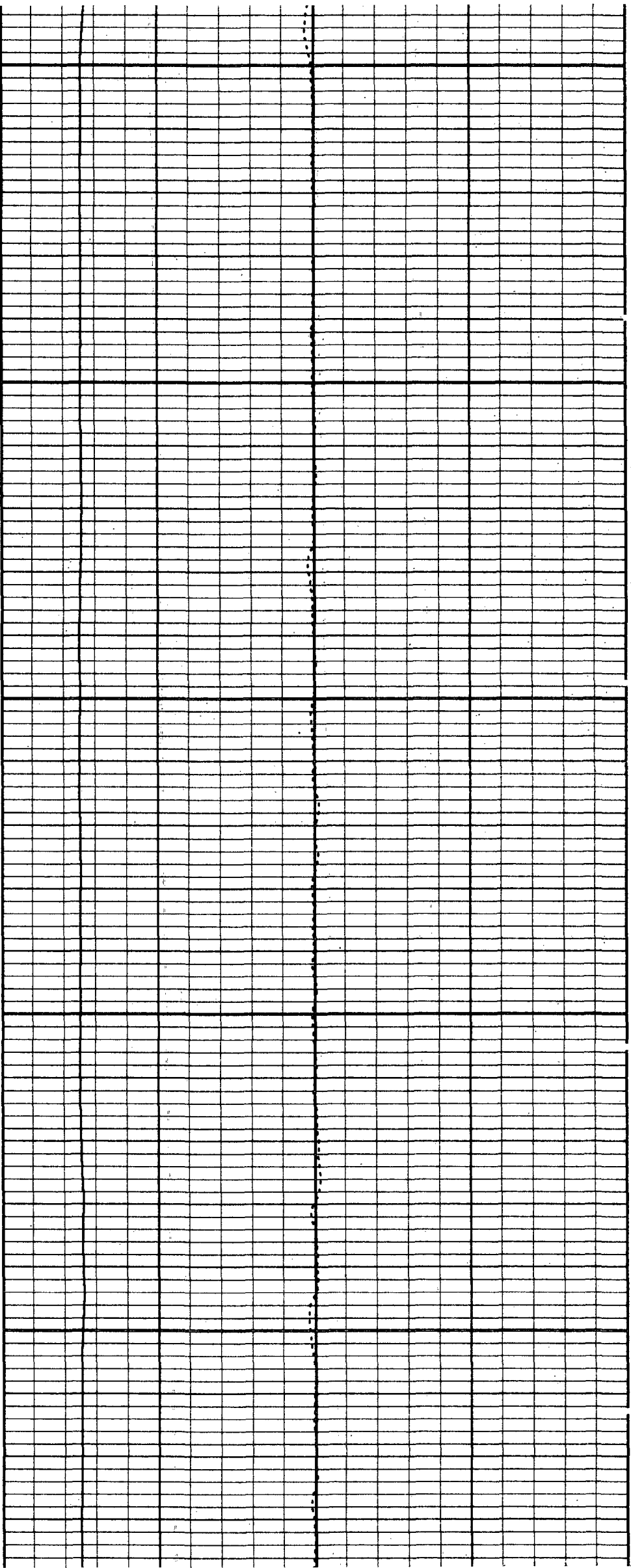
1900

2000

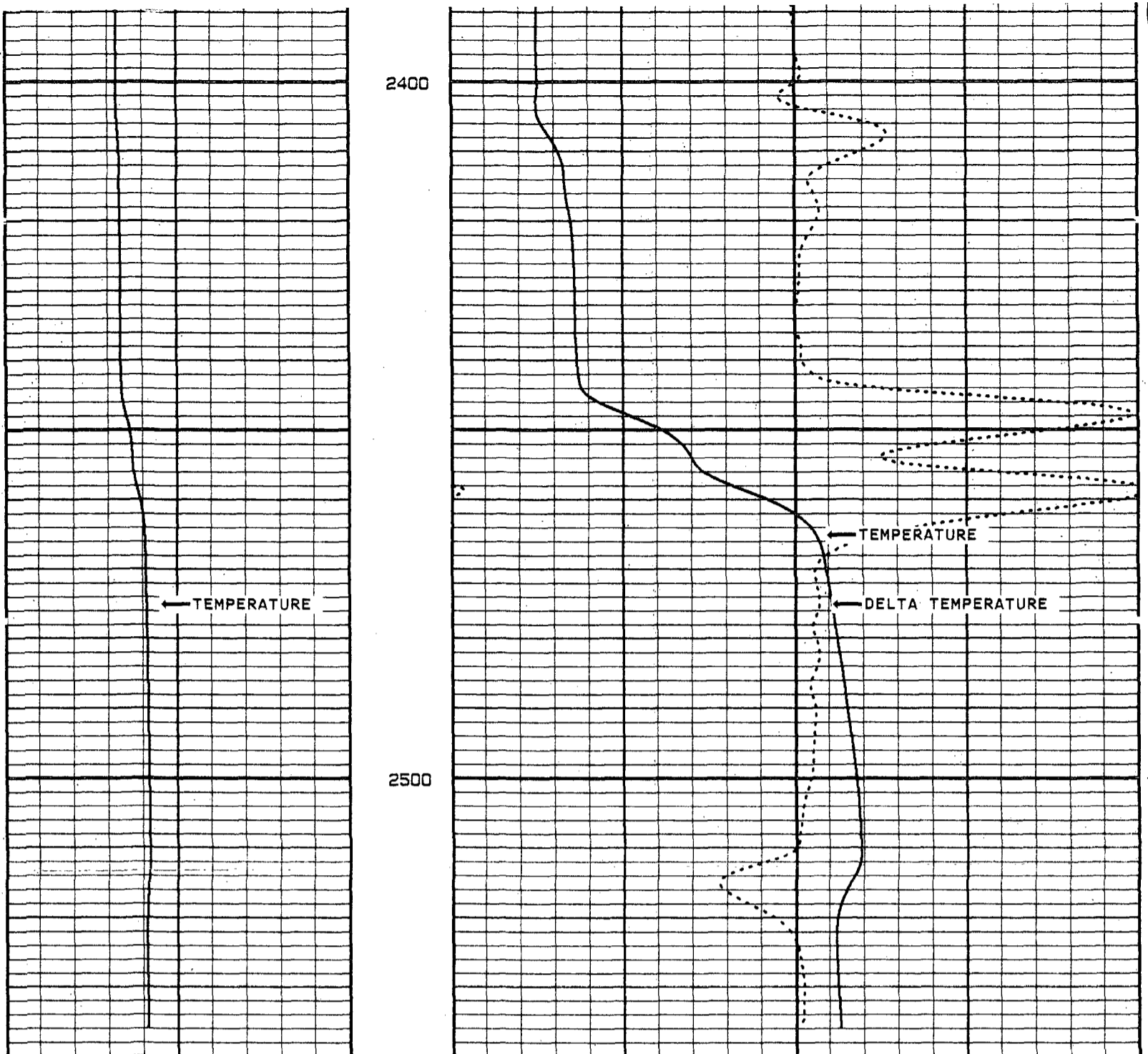
2100



2200



2300



MC: TEMPERATURE
50 DEGREES 150

TEMPERATURE DEGREES 80 100
DELTA TEMPERATURE
-1.0 1.0

START DEPTH: 1300.0 FEET DIRECTION: DOWN DATE: 01/14/96 TIME: 01:45:21 MODE: TRACE PLAYBACK
NCIW29TEMP

MAIN PASS
VERSION: 2.26

MASTER CALIBRATION SUMMARY

FILE: DATE: 01/14/96 TIME: 02:15 VERSION: 2.26

TEMPERATURE #39

DATE: 01/12/96 TIME: 08:12

| | MEASURED | UNITS | STANDARD | MINIMUM | MAXIMUM | DEVIATION | UNITS |
|------|----------|-------|----------|---------|---------|-----------|-------|
| ZERO | 1270.7 | CPS | 63.0 | 63.0 | 63.1 | 0.00 | DEGF |
| PLUS | 1813.1 | CPS | 102.0 | 81.2 | 100.9 | 0.36 | DEGF |

COMPANY MISSIMER INTERNATIONAL

WELL NCRWTP IW #2 (MC-5008)

FIELD NORTH COLLIER STATE FLORIDA

