

FLORIDA

GEOPHYSICAL LOGGING, INC.

HIGH RESOLUTION
TEMPERATURE
LOG

FILE NO. _____

COMPANY MISSIMER INTERNATIONAL

WELL NCRWTP IM #2

FIELD NORTH COLLIER

COUNTY COLLIER STATE FLORIDA

LOCATION _____

OTHER SERVICES:
XY CALIPER
DIL
FLOWMETER
BHC

SEC. _____ TWP _____ RGE _____

ELEV.: K.B. _____
D.F. _____
G.L. _____

PERMANENT DATUM PAD LEVEL (P.L.) ELEV. _____

LOG MEASURED FROM P.L. FT. ABOVE PERMANENT DATUM

DRILLING MEASURED FROM P.L.

DATE 13-JANUARY-1996

RUN NO. NINE

TYPE LOG HRT

DEPTH-DRILLER 2550'

DEPTH-LOGGER 2546'

LOGGED INTERVAL 2546' TO 1300'

OPERATING RIG TIME 1.5 HOURS

TYPE FLUID IN HOLE WATER

SALINITY, PPM CL NA

DENSITY-VISCOSITY NA

LEVEL FULL

MAX. REC. TEMP, DEG F. 91 DEG. F.

EQUIPMENT-LOCATION 101 - FTM

RECORDED BY WILLIAMS

WITNESSED BY ELIZABETH SHAWKEY

RUN NO.	BOREHOLE RECORD		CASING RECORD				
	BIT	FROM	TO	SIZE	WGT.	FROM	TO
<u>NINE</u>	<u>1 1/4"</u>	<u>2550'</u>	<u>CASING</u>	<u>52"</u>	<u>.5" WT.</u>	<u>30'</u>	<u>SURFACE</u>
				<u>38"</u>	<u>.5" WT.</u>	<u>435'</u>	<u>SURFACE</u>
				<u>30"</u>	<u>.5" WT.</u>	<u>1310'</u>	<u>SURFACE</u>

ALL INTERPRETATIONS ARE OPINIONS BASED ON INFERENCES FROM ELECTRICAL OR OTHER MEASUREMENTS AND WE CANNOT AND DO NOT GUARANTEE THE ACCURACY OR CORRECTNESS OF ANY INTERPRETATION, AND WE SHALL NOT, EXCEPT IN THE CASE OF GROSS OR WILLFULL NEGLIGENCE ON OUR PART, BE LIABLE OR RESPONSIBLE FOR ANY LOSS, COSTS, DAMAGES, OR EXPENSES INCURRED OR SUSTAINED BY ANYONE RESULTING FROM ANY INTERPRETATION MADE BY ANY OF OUR OFFICERS, AGENTS OR EMPLOYEES. THESE INTERPRETATIONS ARE ALSO SUBJECT TO OUR GENERAL TERMS AND CONDITIONS SET OUT IN OUR CURRENT PRICE SCHEDULE.

REMARKS

TEMPERATURE TOOL STRING CONFIGURATION



- CENTRALIZER -- 2 FT. LONG
- 1 11/16" WEIGHT -- 5 FT. LONG
- CENTRALIZER -- 2 FT. LONG
- TEMPERATURE -- 2.5 FT. LONG

-- TOTAL TOOL STRING LENGTH = 11.5 FT.

REMARKS

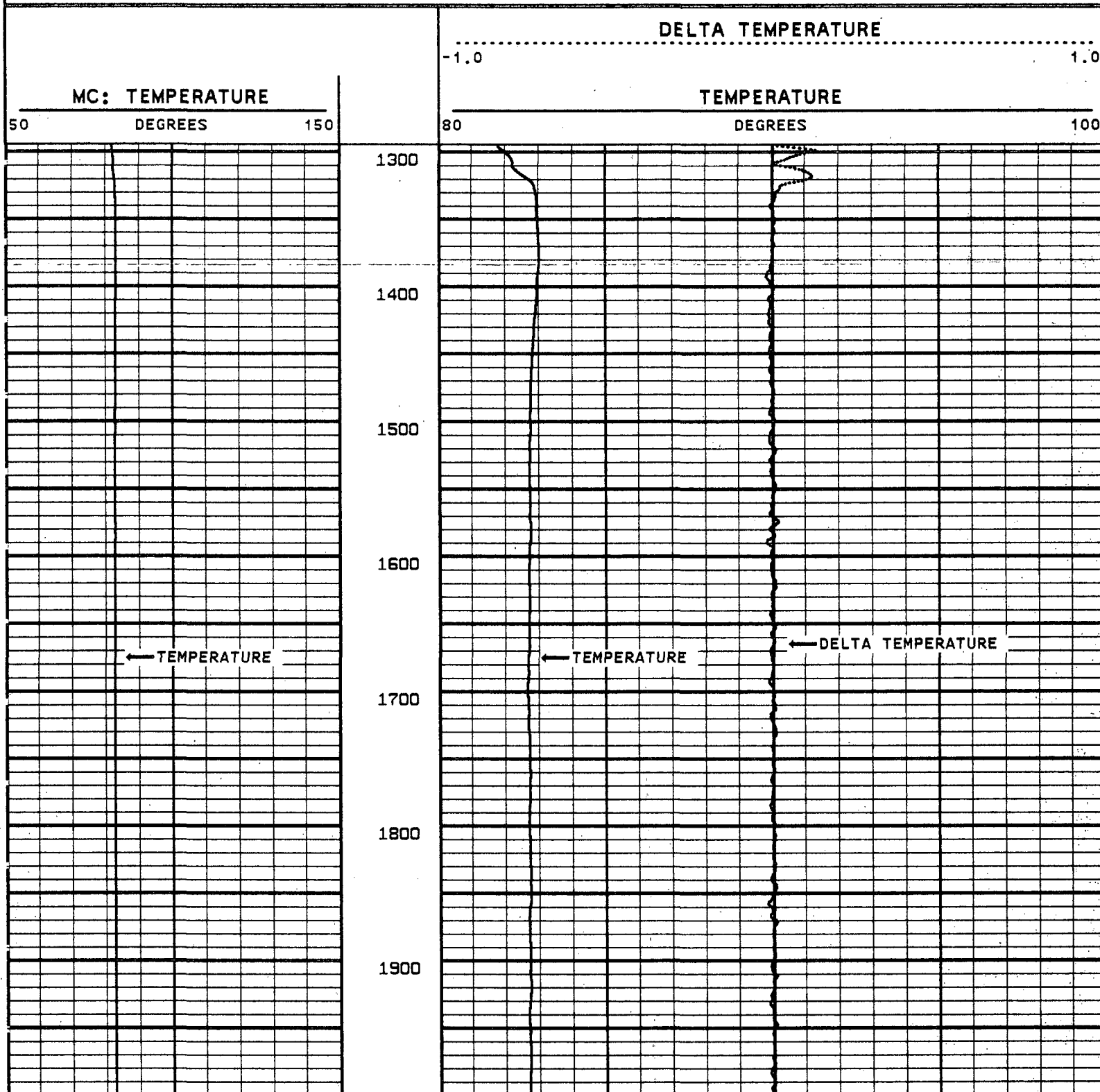
LOGGED GOING DOWNHOLE
FLOW RATE = 50 GPM

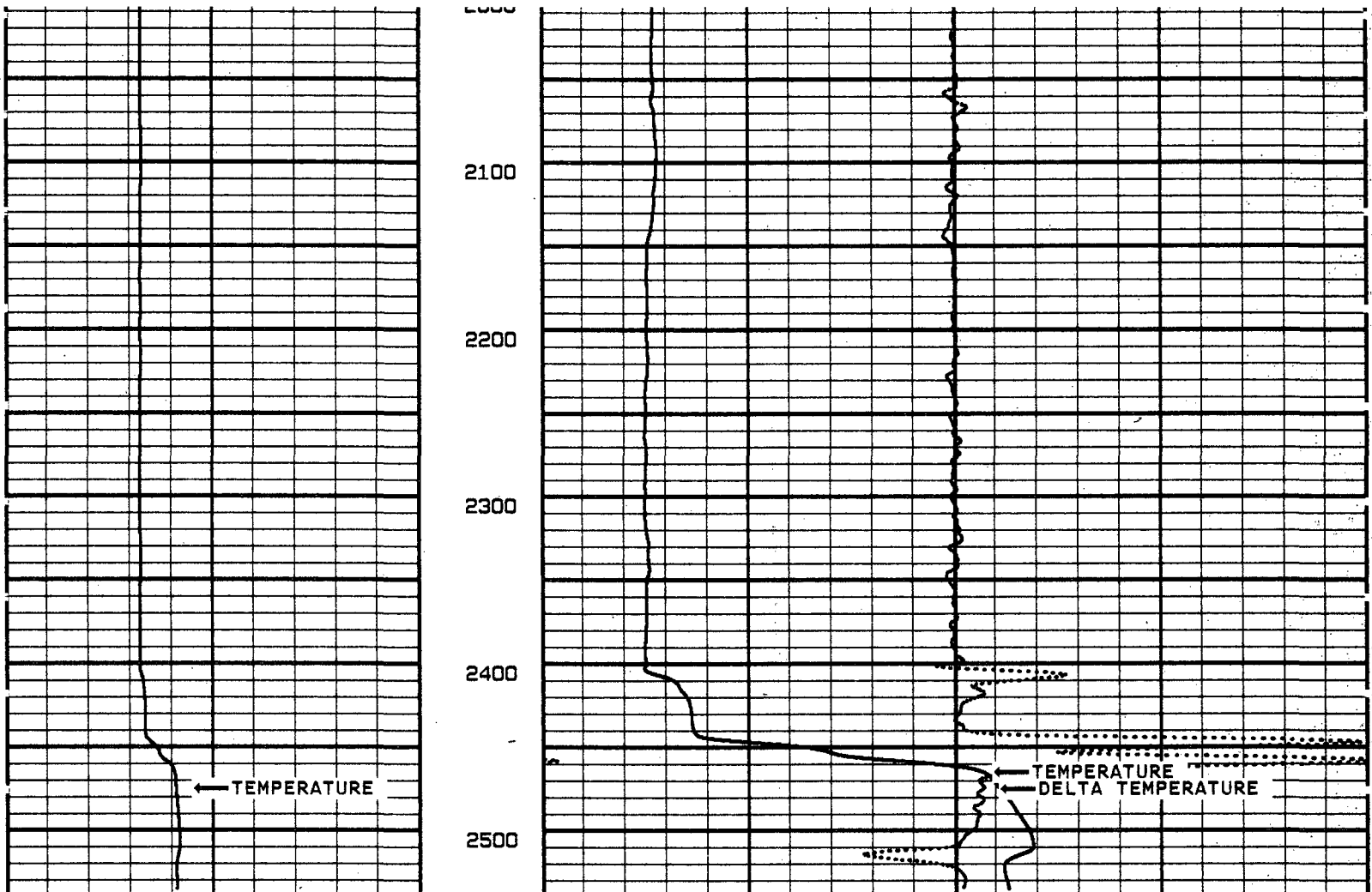
VERSION: 2.26

MAIN PASS

NCIW29TEMP

FINISH DEPTH: 2540.1 FEET DIRECTION: DOWN DATE: 01/14/96 TIME: 02:09:02 MODE: TRACE PLAYBACK





MC: TEMPERATURE
50 DEGREES 150

TEMPERATURE
80 DEGREES 100
DELTA TEMPERATURE
-1.0 1.0

START DEPTH: 1300.0 FEET DIRECTION: DOWN DATE: 01/14/96 TIME: 01:45:21 MODE: TRACE PLAYBACK
NCIW29TEMP

MAIN PASS
VERSION: 2.26

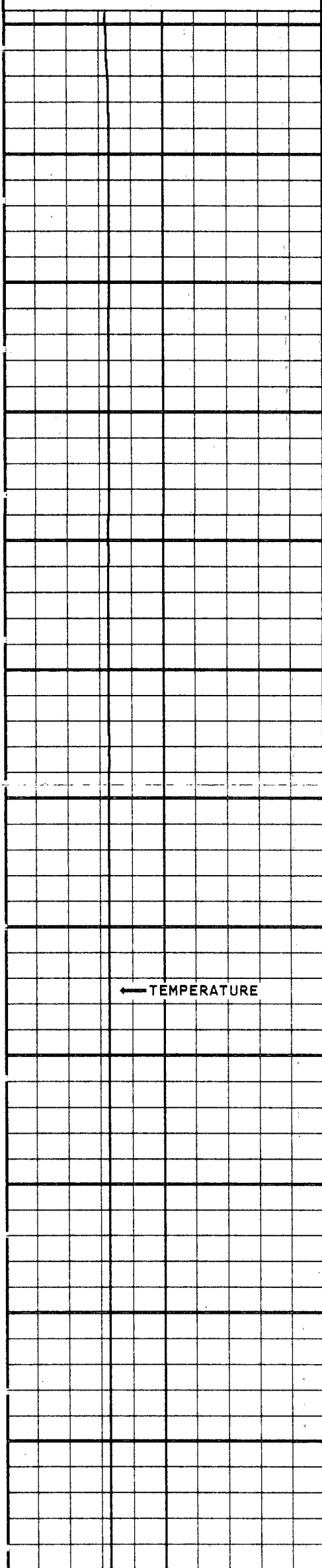
REMARKS
LOGGED GOING DOWNHOLE
FLOW RATE = 50 GPM

VERSION: 2.26
MAIN PASS

NCIW29TEMP
FINISH DEPTH: 2540.1 FEET DIRECTION: DOWN DATE: 01/14/96 TIME: 02:09:02 MODE: TRACE PLAYBACK

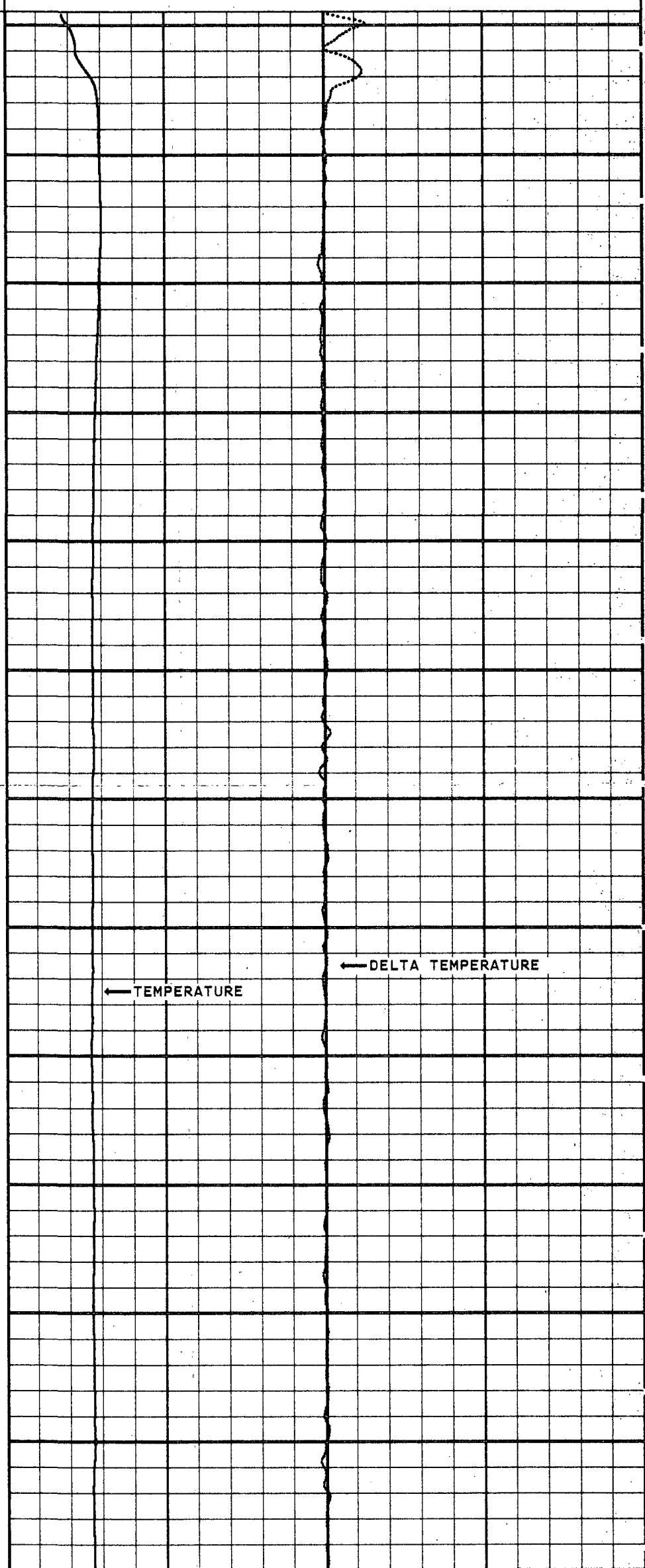
MC: TEMPERATURE
DELTA TEMPERATURE
-1.0 1.0
TEMPERATURE

150 DEGREES 150

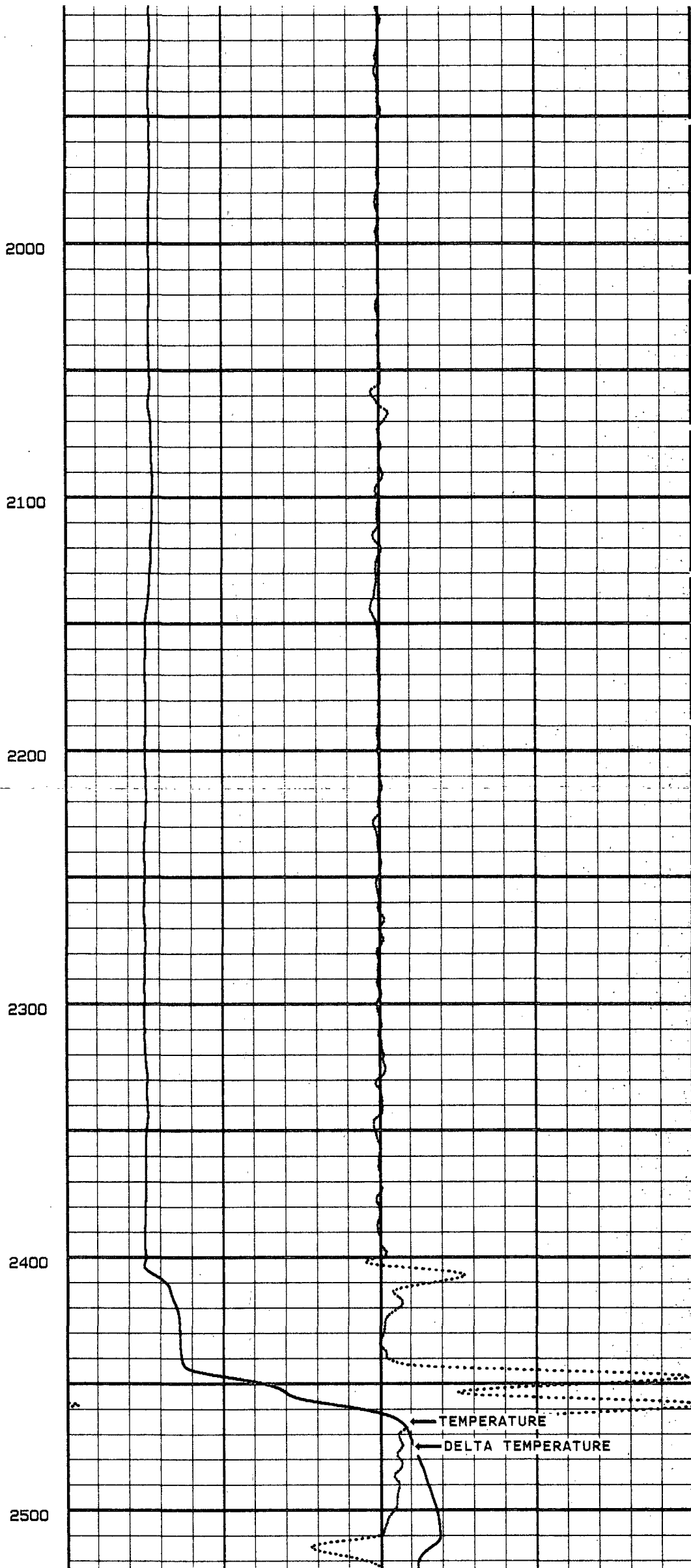
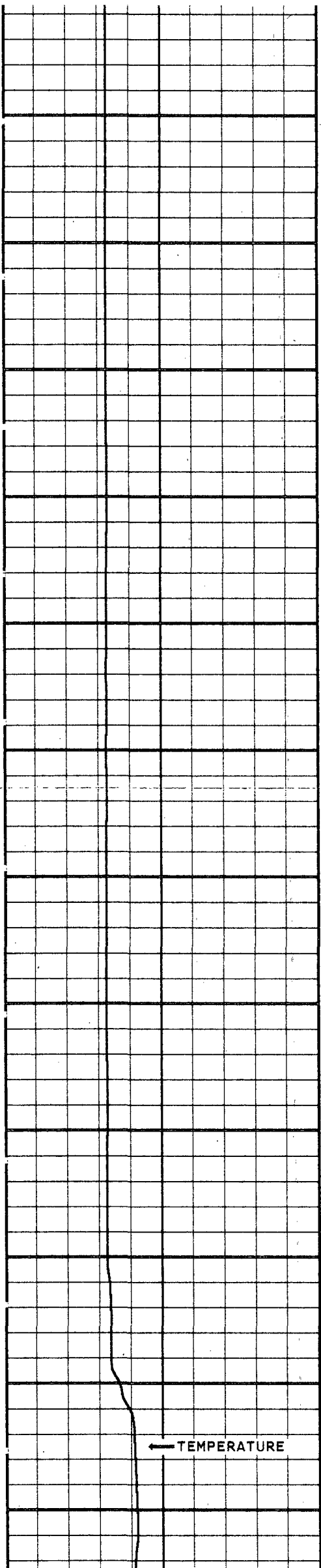


1300
1400
1500
1600
1700
1800
1900

180 DEGREES 100



← TEMPERATURE ← DELTA TEMPERATURE



MC: TEMPERATURE	TEMPERATURE	
50 DEGREES 150	80 DEGREES 100	
	DELTA TEMPERATURE	
	-1.0	1.0

START DEPTH: 1300.0 FEET DIRECTION: DOWN DATE: 01/14/96 TIME: 01:45:21 MODE: TRACE PLAYBACK

NCIW29TEMP

MAIN PASS

VERSION: 2.26

REMARKS

LOGGED GOING DOWNHOLE
FLOW RATE = 50 GPM

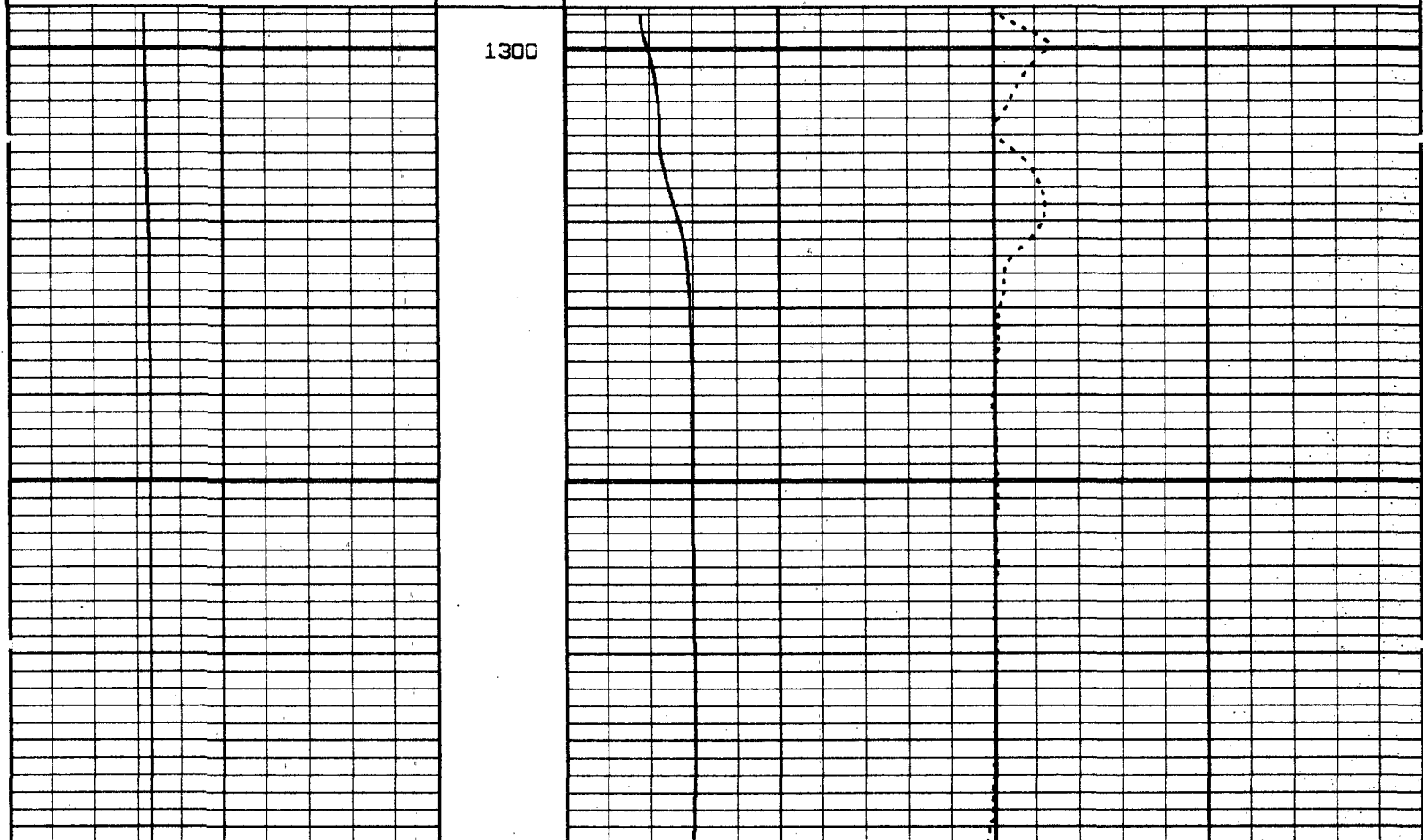
VERSION: 2.26

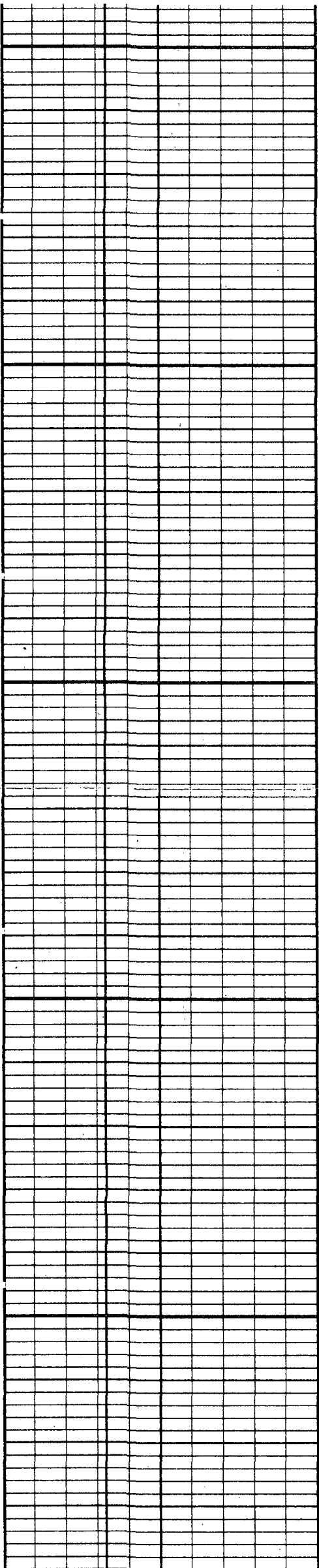
MAIN PASS

NCIW29TEMP

FINISH DEPTH: 2540.1 FEET DIRECTION: DOWN DATE: 01/14/96 TIME: 02:09:02 MODE: TRACE PLAYBACK

MC: TEMPERATURE	TEMPERATURE	DELTA TEMPERATURE
50 DEGREES 150	80 DEGREES 100	-1.0 1.0

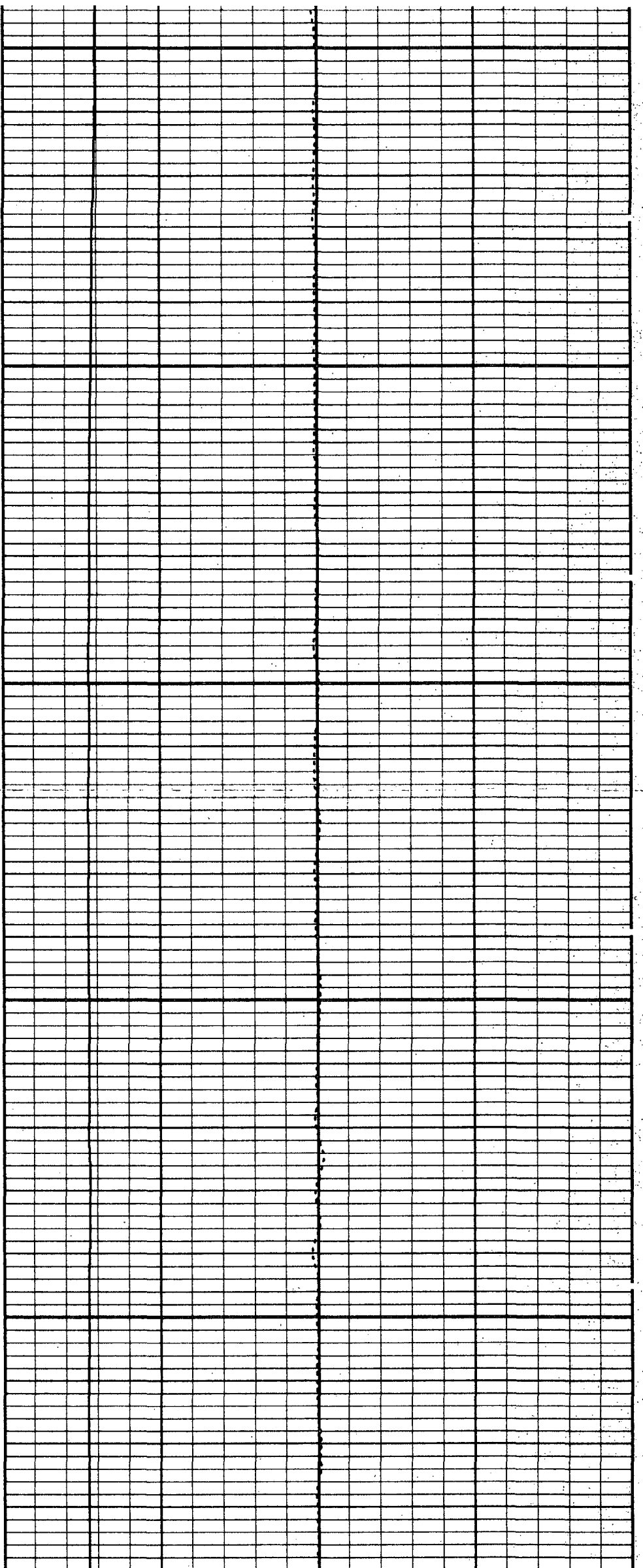


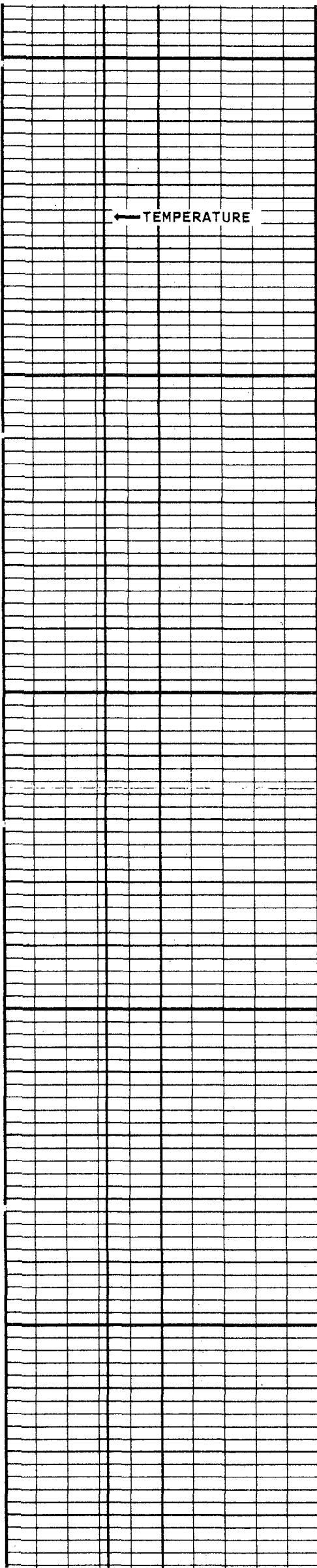


1400

1500

1600

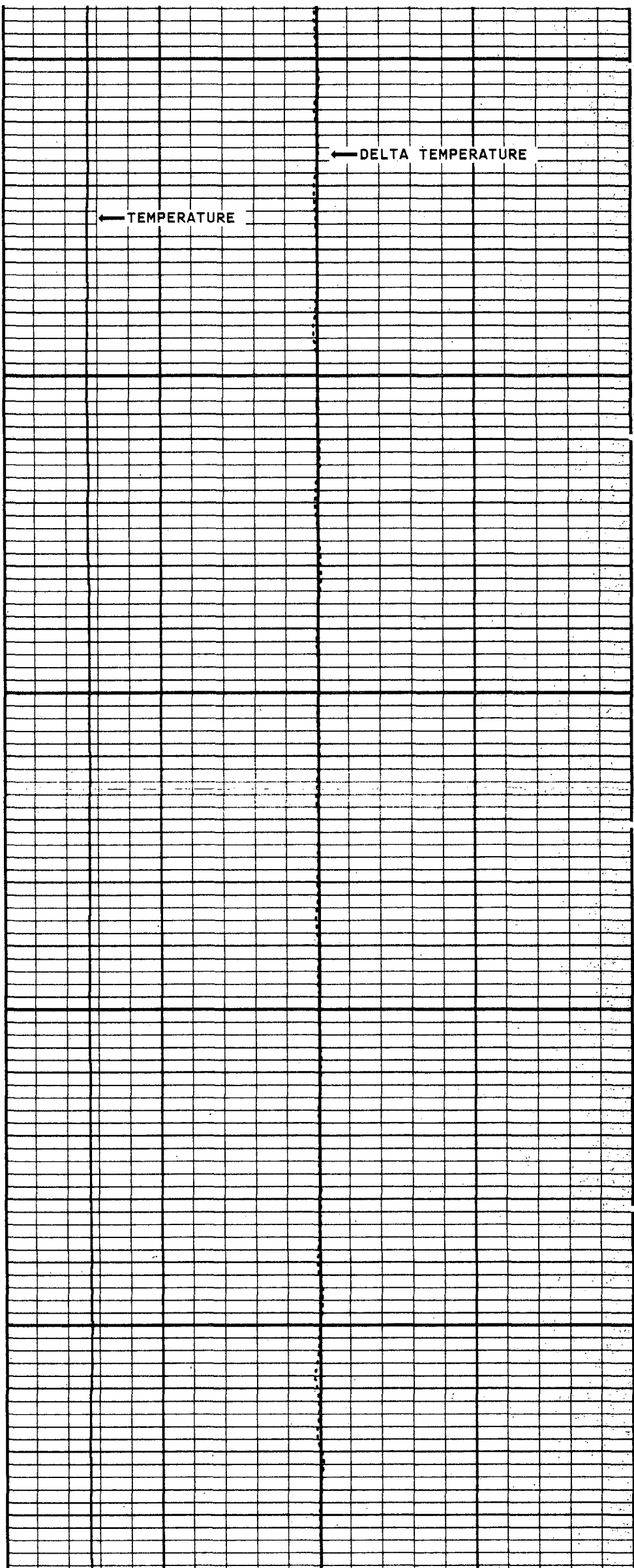




← TEMPERATURE

1700

1800



← TEMPERATURE

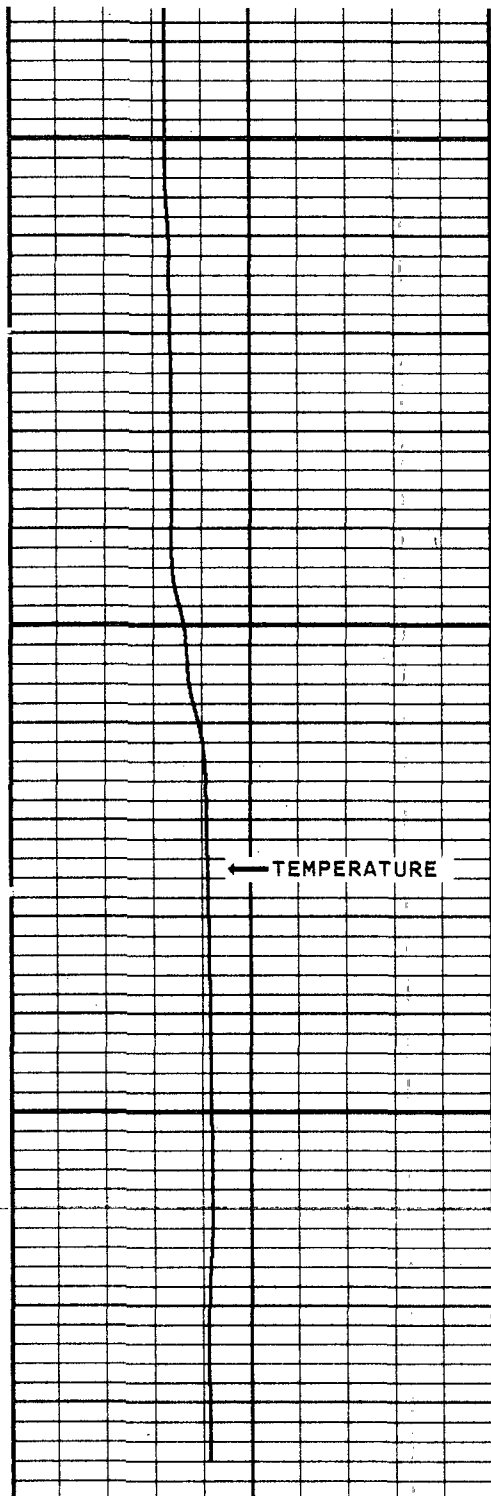
← DELTA TEMPERATURE

A large grid of graph paper with a vertical margin line on the left side. The grid is composed of small squares, with a larger square grid area on the right side of the margin line.

2200

A large grid of graph paper with a vertical margin line on the left side. The grid is composed of small squares, with a larger square grid area on the right side of the margin line.

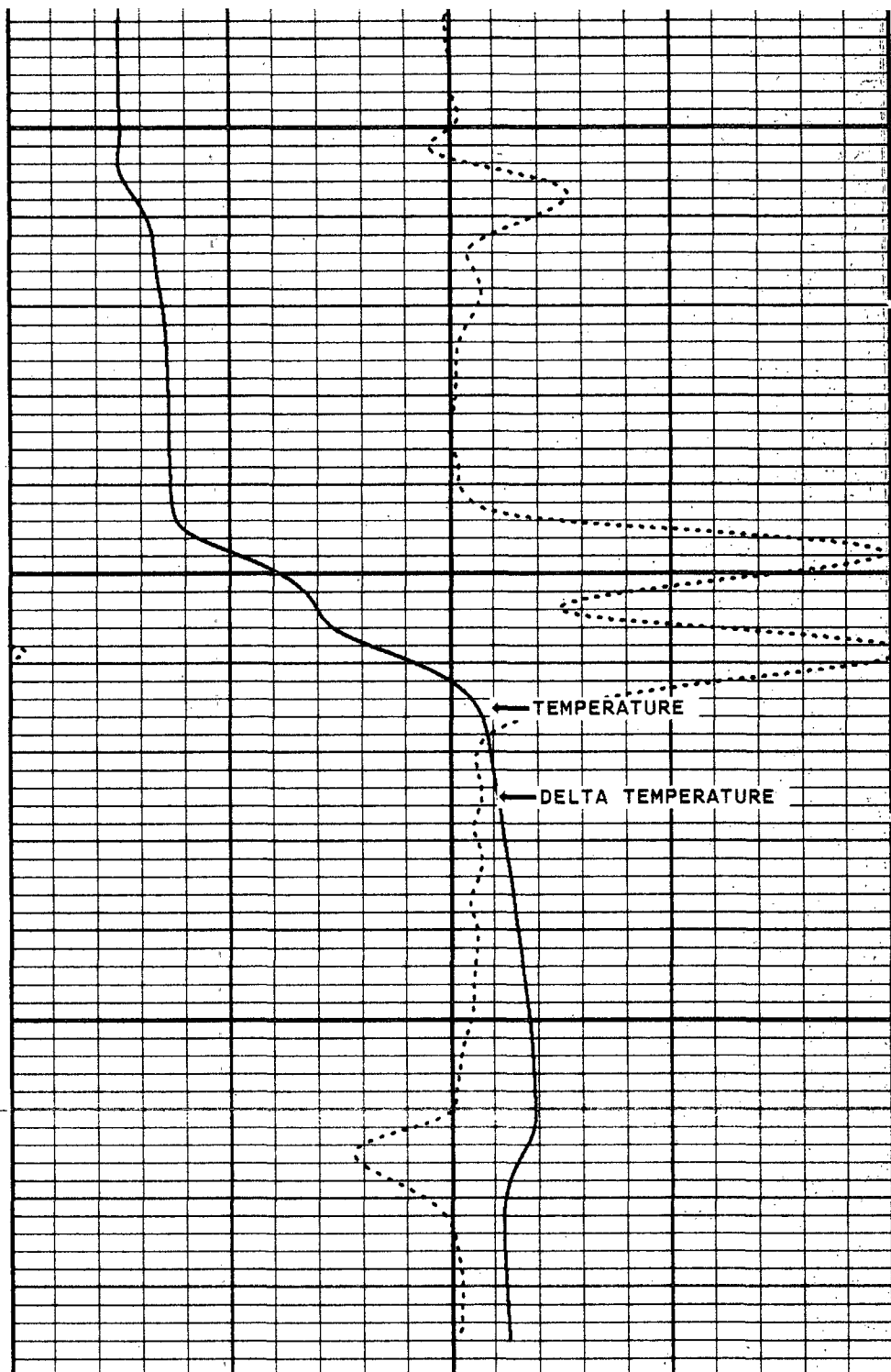
2300



2400

2500

← TEMPERATURE



← TEMPERATURE

← DELTA TEMPERATURE

MC: TEMPERATURE
50 DEGREES 150

TEMPERATURE
80 DEGREES 100
DELTA TEMPERATURE
-1.0 1.0

START DEPTH: 1300.0 FEET DIRECTION: DOWN DATE: 01/14/96 TIME: 01:45:21 MODE: TRACE PLAYBACK

NCIW29TEMP

MAIN PASS

VERSION: 2.26

MASTER CALIBRATION SUMMARY

FILE:

DATE: 01/14/96

TIME: 02:15

VERSION: 2.26

DATE: 01/12/96

TIME: 08:12

	MEASURED	UNITS	STANDARD	MINIMUM	MAXIMUM	DEVIATION	UNITS
ZERO	1270.7	CPS	63.0	63.0	63.1	0.00	DEGF
PLUS	1813.1	CPS	102.0	81.2	100.9	0.36	DEGF

COMPANY MISSIMER INTERNATIONALWELL NCRWTP IW #2 (MC-5008)FIELD NORTH COLLIER STATE FLORIDA