



FLOFLORIDA

GEOPHYSICAL LOGGING, INC.

DYNAMIC
TEMPERATURE
LOG

FILE NO. UC11-203675

COMPANY MISSISSIPPI INTERNATIONAL

WELL NCRWTP IM #2 (MC-5008)

FIELD NORTH COLLIER

COUNTY COLLIER

STATE FLORIDA

LOCATION

OTHER SERVICES:
FLOWMETER
X-Y CALIPER
BHC/SONIC/VDL
DIL/LL3/SP/GR

SEC. TWP 48S RGE 26E

PERMANENT DATUM PAD LEVEL (P.L.) ELEV. _____

LOG MEASURED FROM P.L. FT. ABOVE PERMANENT DATUM

DRILLING MEASURED FROM P.L.

ELEV.: K.B. _____

D.F. _____

G.L. _____

DATE 07-DEC-95

RUN NO. THREE

TYPE LOG TEMPERATURE

DEPTH-DRILLER 1310'

DEPTH-LOGGER 1308'

LOGGED INTERVAL 1308' TO 420'

OPERATING RIG TIME 1.0 HOURS

TYPE FLUID IN HOLE WATER

SALINITY, PPM CL N/A

DENSITY-VISCOSITY N/A

LEVEL FULL

MAX. REC. TEMP, DEG F. 89 DEG.F

EQUIPMENT-LOCATION 102 - MIAMI

RECORDED BY WILLIAMS/LEE

WITNESSED BY M.ROMERO

P. TATE

BOREHOLE RECORD

CASING RECORD

RUN NO. BIT FROM TO SURFACE SIZE MGT. FROM TO SURFACE

ONE 48" 435' 435' 52" .5" WT. 30' SURFACE

THREE 12.25" 1310' 435' 38" .5" WT. 435' SURFACE

ALL INTERPRETATIONS ARE OPINIONS BASED ON INFERENCES FROM ELECTRICAL OR OTHER MEASUREMENTS AND WE CANNOT AND DO NOT GUARANTEE THE ACCURACY OR CORRECTNESS OF ANY INTERPRETATION, AND WE SHALL NOT, EXCEPT IN THE CASE OF GROSS OR WILLFULL NEGLIGENCE ON OUR PART, BE LIABLE OR RESPONSIBLE FOR ANY LOSS, COSTS, DAMAGES, OR EXPENSES INCURRED OR SUSTAINED BY ANYONE RESULTING FROM ANY INTERPRETATION MADE BY ANY OF OUR OFFICERS, AGENTS OR EMPLOYEES. THESE INTERPRETATIONS ARE ALSO SUBJECT TO OUR GENERAL TERMS AND CONDITIONS SET OUT IN OUR CURRENT PRICE SCHEDULE.

REMARKS

TEMPERATURE TOOL STRING CONFIGURATION

-- 7 TO 1 ADAPTER -- 1 FT. LONG

-- TOTAL TOOL STRING LENGTH = 8.5 FT. --

-- 1 11/16" WEIGHT -- 5 FT. LONG

--TEMPERATURE -- 2.5 FT. LONG

REMARKS

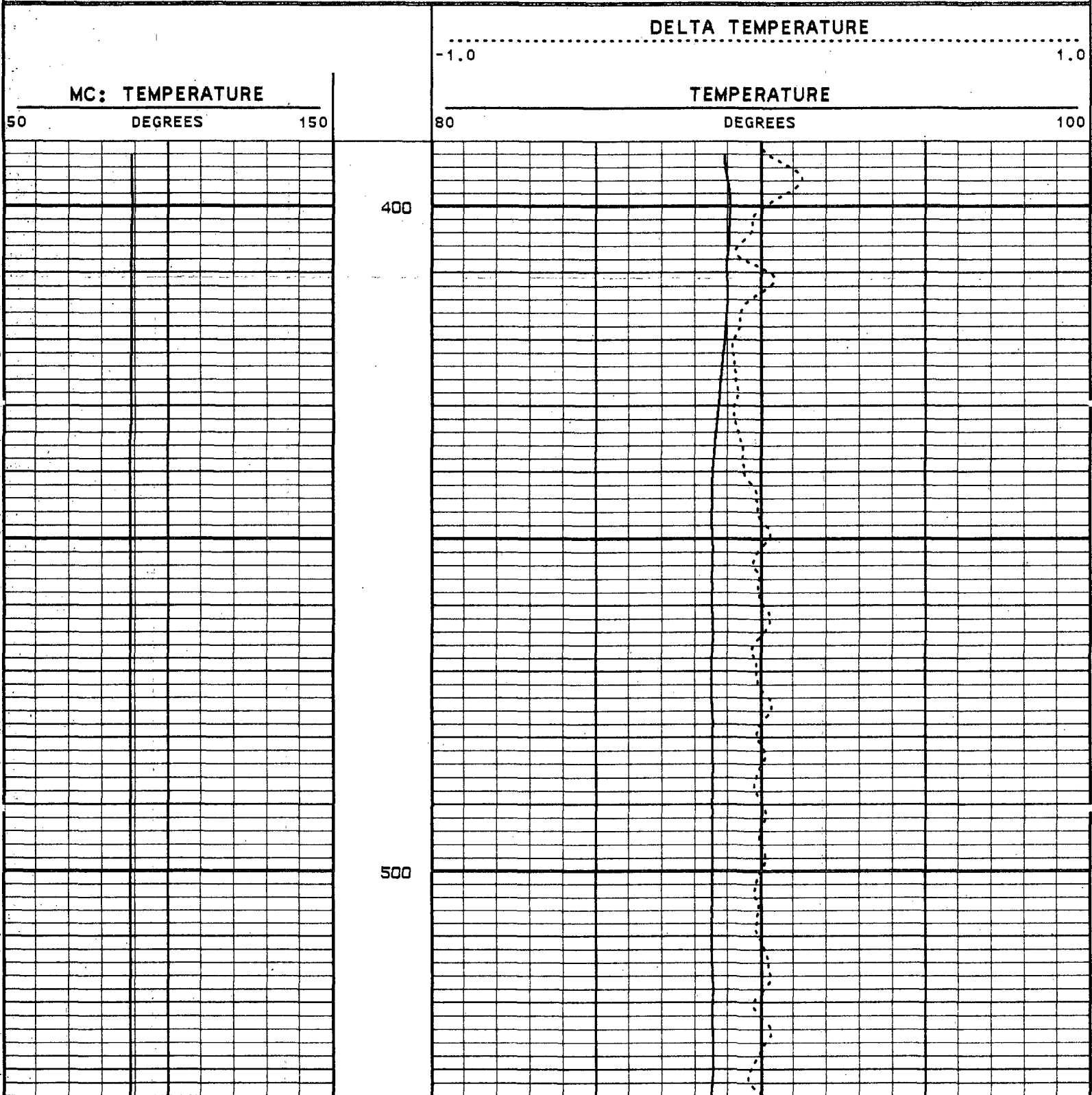
FLOWRATE = 25 GPM

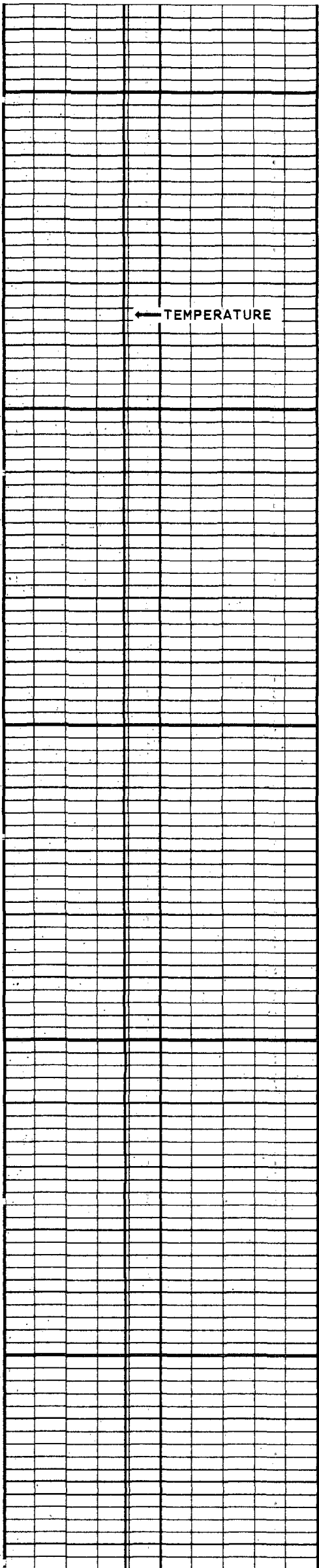
VERSION: 2.26

MAIN PASS

NIW23TMP

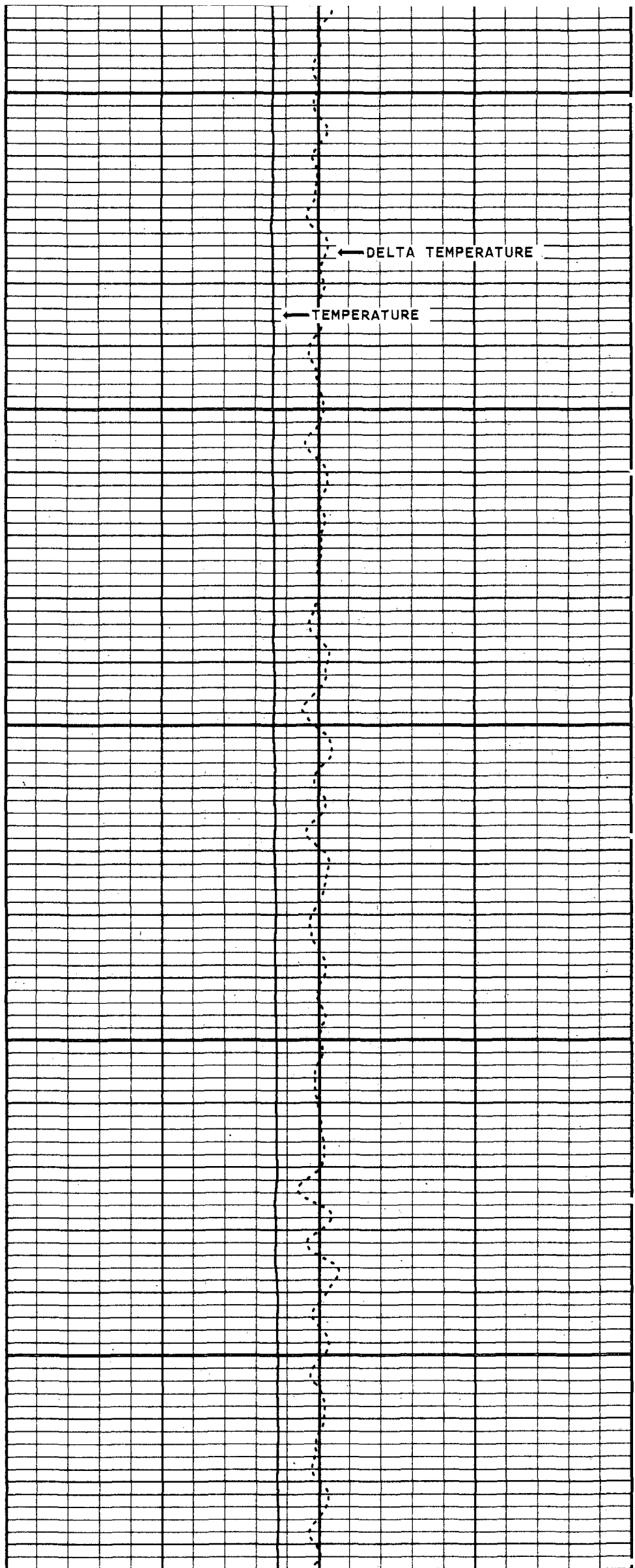
FINISH DEPTH: 1293.8 FEET DIRECTION: DOWN DATE: 12/07/95 TIME: 22:11:37 MODE: TRACE PLAYBACK

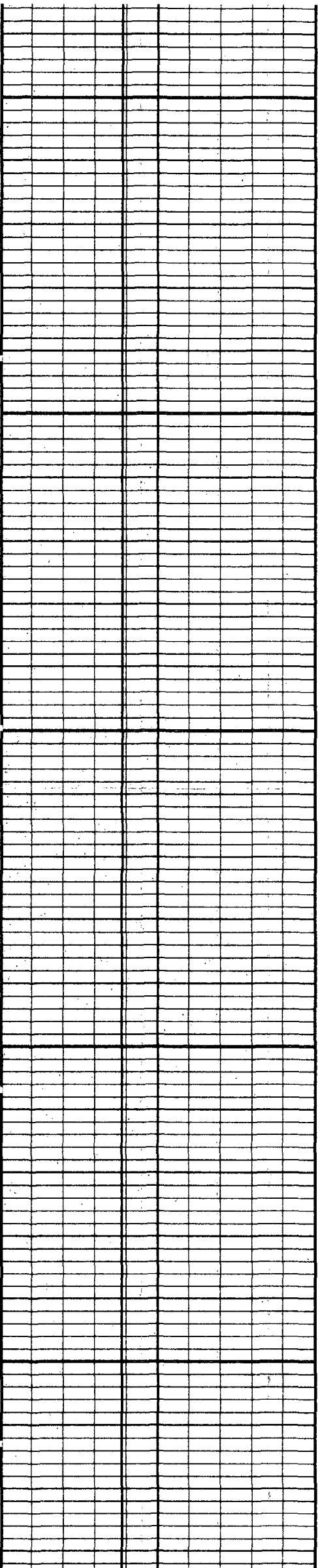




600

700

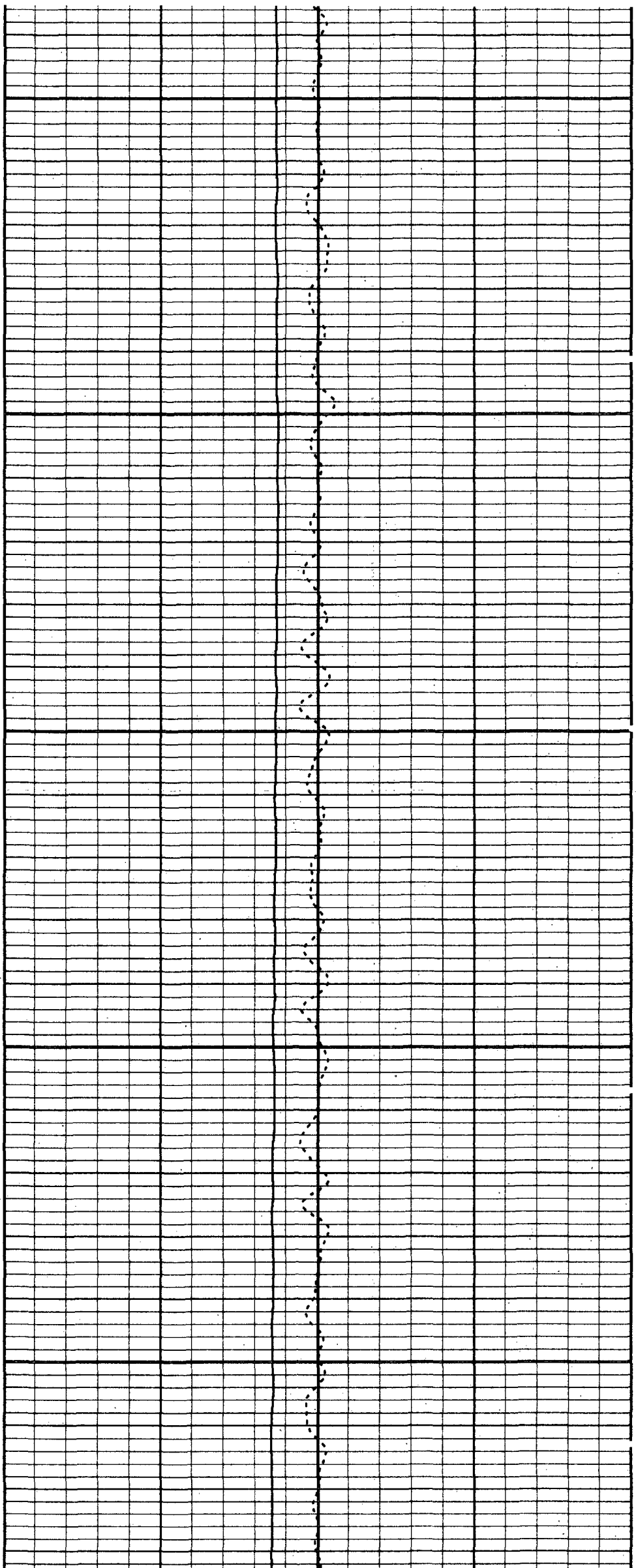


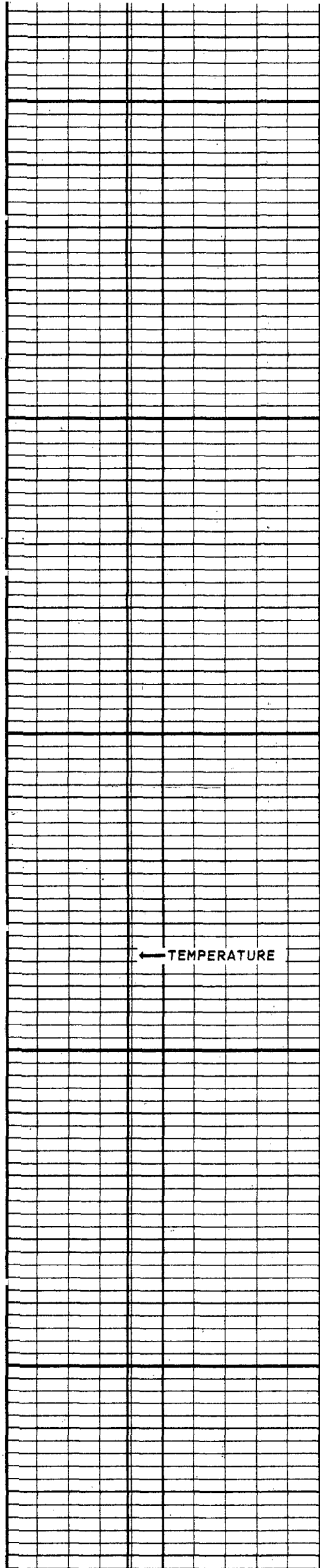


800

900

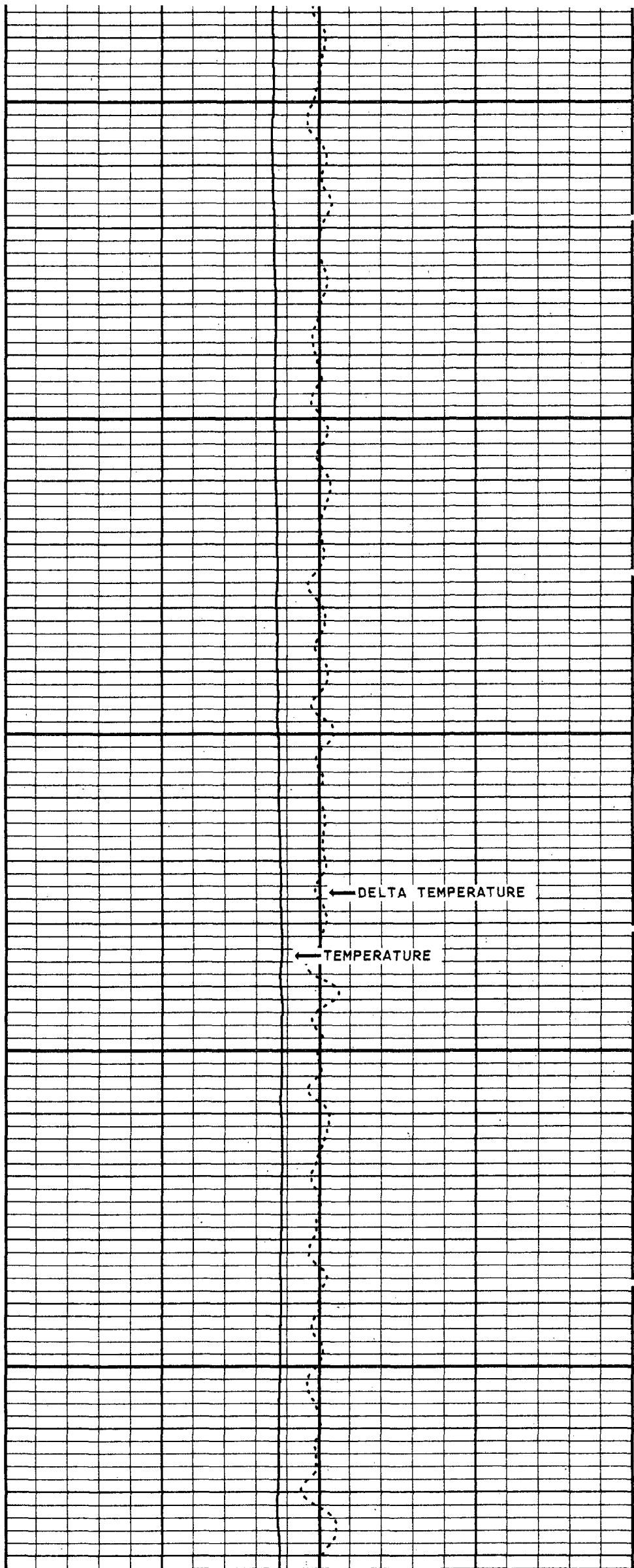
1000





1100

1200



1300

MC: TEMPERATURE

50 DEGREES 150

TEMPERATURE

80 DEGREES 100

DELTA TEMPERATURE

-1.0 1.0

START DEPTH: 395.9 FEET DIRECTION: DOWN DATE: 12/07/95 TIME: 21:55:23 MODE: TRACE PLAYBACK

NIW23TMP

MAIN PASS

VERSION: 2.26

VERSION: 2.26

REPEAT SECTION

NIW23TRP

FINISH DEPTH: 1316.4 FEET DIRECTION: DOWN DATE: 12/07/95 TIME: 22:18:05 MODE: TRACE PLAYBACK

DELTA TEMPERATURE

-1.0 1.0

MC: TEMPERATURE

50 DEGREES 150

TEMPERATURE

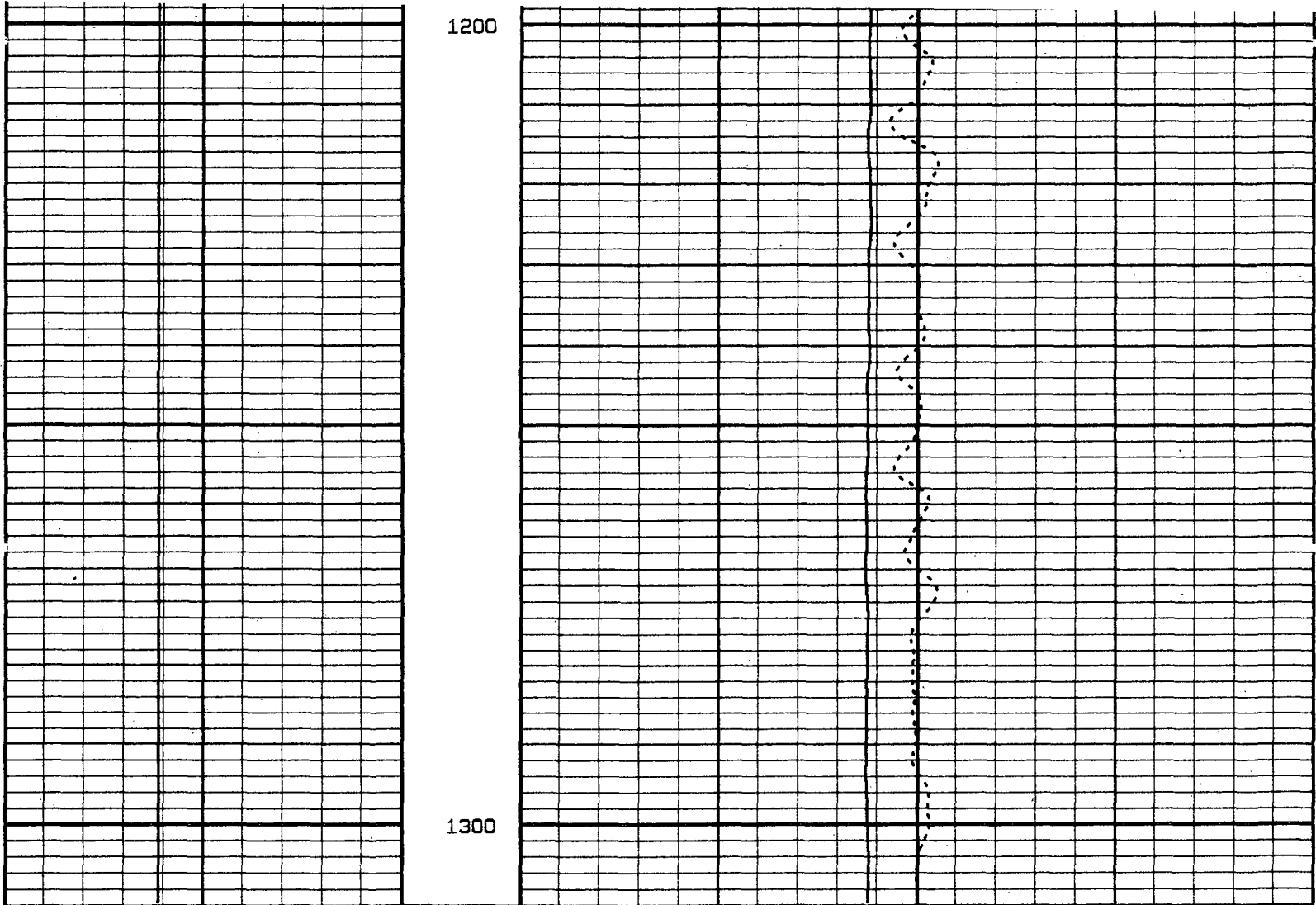
80 DEGREES 100

1100

DELTA TEMPERATURE

← TEMPERATURE

← TEMPERATURE



MC: TEMPERATURE
50 DEGREES 150

TEMPERATURE
80 DEGREES 100
DELTA TEMPERATURE
-1.0 1.0

START DEPTH: 1261.4 FEET DIRECTION: DOWN DATE: 12/07/95 TIME: 22:13:34 MODE: TRACE PLAYBACK
NIW23TRP

REPEAT SECTION
VERSION: 2.26

MASTER CALIBRATION SUMMARY

FILE: DATE: 12/07/95 TIME: 22:21 VERSION: 2.26

TEMPERATURE #15

DATE: 11/26/94 TIME: 16:56

	MEASURED	UNITS	STANDARD	MINIMUM	MAXIMUM	DEVIATION	UNITS
ZERO	461.0	CPS	77.0	77.0	77.0	0.05	DEGF
PLUS	710.6	CPS	111.2	110.6	112.0	0.39	DEGF