

RECEIVED
 SEP 16 2003
 South District
TEMPERATURE LOG

Company **WATER RESOURCE SLTS.**
 Well **IW #2**
 Field **NCWRF**
 County **COLLIER**
 State **FL**

Company **WATER RESOURCE SOLUTIONS, INC.**
 Well **IW #2**
 Field **NCWRF**
 County **COLLIER** State **FLORIDA**
 Location **SE 1/4 S27 T48S R25E**
 Permanent Datum **PAD** Elevation **15'**
 Log Measured From **GROUND LEVEL**
 Drilling Measured From
 Other Services **SEE COMMENTS**
 Elevation **K.B. N/A D.F. 20.5' G.L. 15'**

Date	SEPT. 14, 2003	
Run Number	THREE	
Depth Driller	1690'	
Depth Logger	1677'	
Bottom Logged Interval	1677'	
Top Log Interval	452'	
Open Hole Size	12.25"	
Type Fluid	WATER	
Density / Viscosity	N/A	
Max. Recorded Temp.	N/A	
Estimated Cement Top	ON ARRIVAL	
Time Well Ready	0300	
Time Logger on Bottom	103	
Equipment Number	103	
Location	FT. MYERS	
Recorded By	FERGUSON	
Witnessed By	D. ACQUAVIVA	

Borehole Record		Tubing Record	
Run Number	Bit	From	To
ONE	58.5"	SURFACE	413'
TWO	12.25"	413'	
Casing Record	Size	Wgt/Ft	Bottom
Surface String	60"	375 W.T.	8'
Prot. String	48"	375 W.T.	407'
Production String			
Liner			

<<< Fold Here >>>

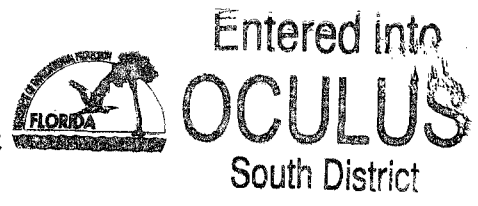
All interpretations are opinions based on inferences from electrical or other measurements and we cannot and do not guarantee the accuracy or correctness of any interpretation, and we shall not, except in the case of gross or willful negligence on our part, be liable or responsible for any loss, costs, damages, or expenses incurred or sustained by anyone resulting from any interpretation made by any of our officers, agents or employees. These interpretations are also subject to our general terms and conditions set out in our current Price Schedule.

Comments

DRILL PIPE WAS SET TO 452' TO AID IN GETTING DOWN

OTHER SERVICES;

X-Y CALIPER / GAMMA-RAY
 DUAL INDUCTION
 BOREHOLE COMPENSATED SONIC



TEMP - MAIN PASS

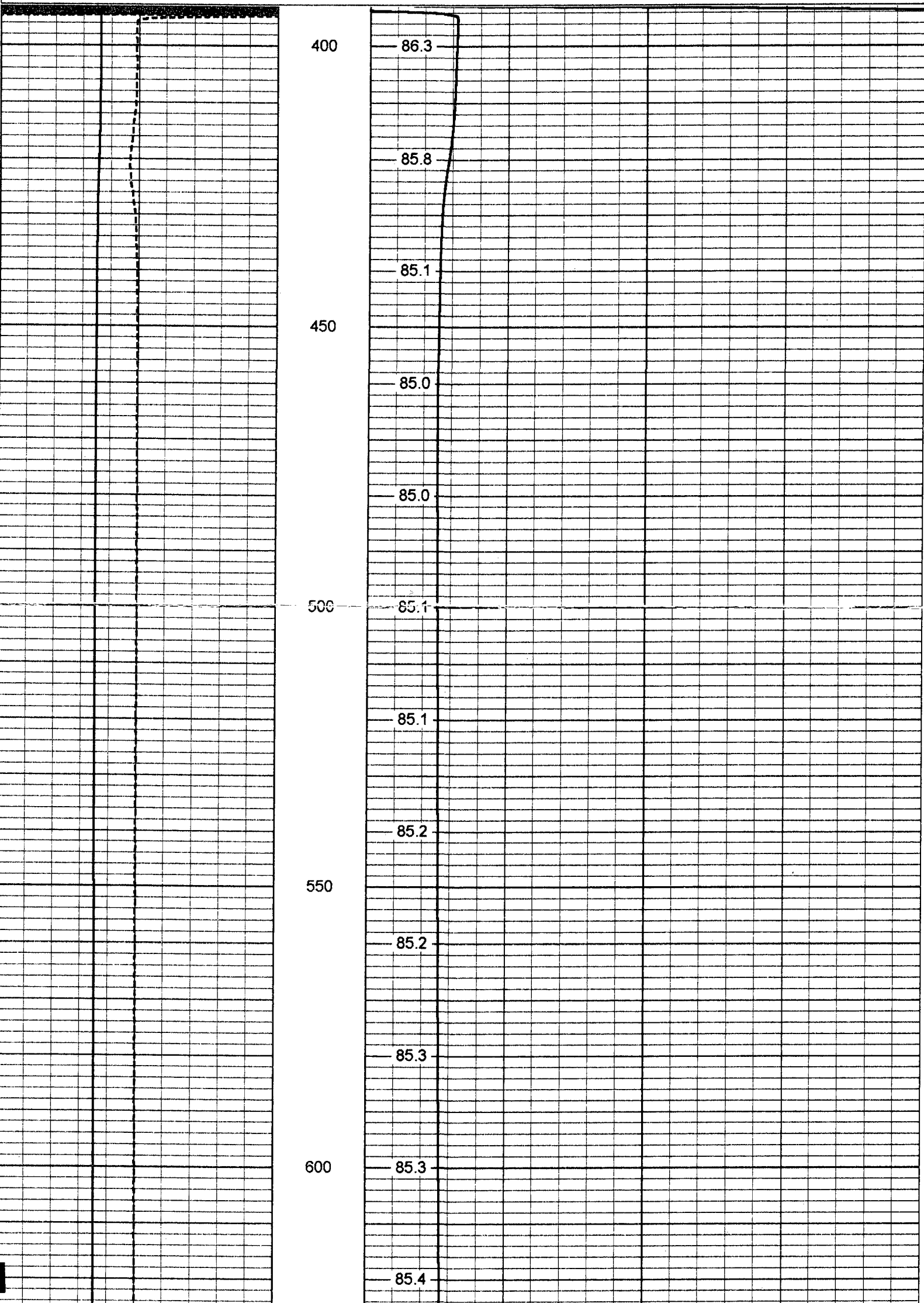
-1 DELTA TEMPERATURE (degF) 1

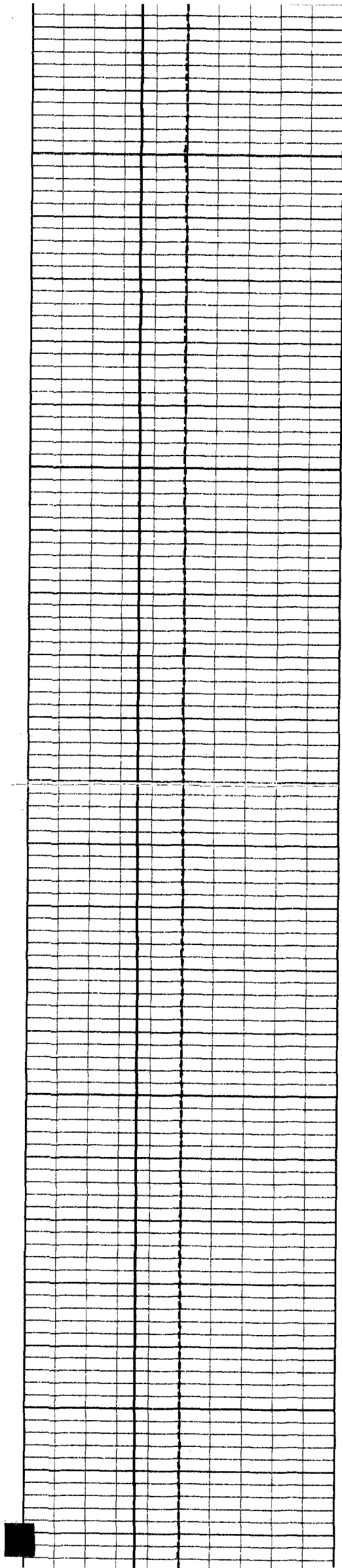
50 TEMPERATURE (degF) 150

80

TEMPERATURE (degF)

120





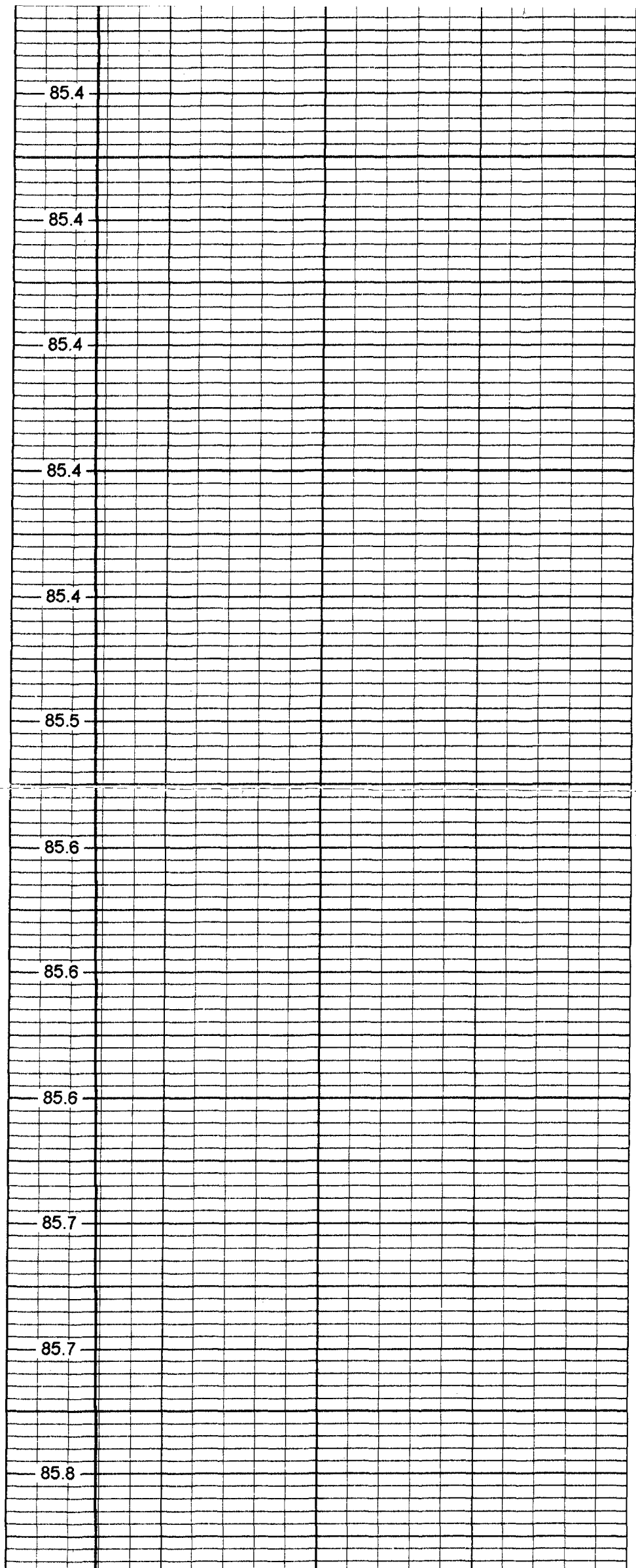
650

700

750

800

850



85.4

85.4

85.4

85.4

85.4

85.5

85.6

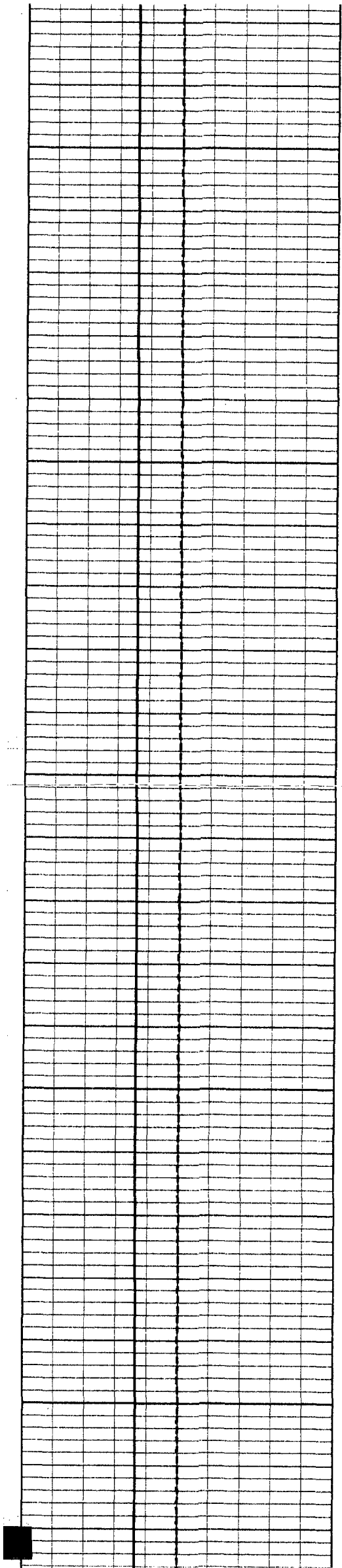
85.6

85.6

85.7

85.7

85.8



900

950

1000

1050

1100

85.8

85.9

86.0

86.0

86.1

86.1

86.2

86.2

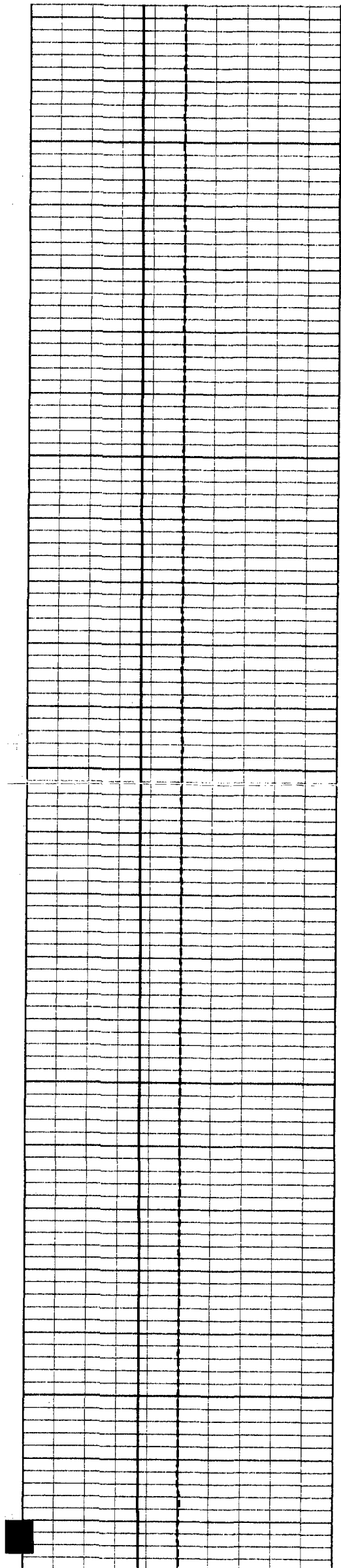
86.3

86.3

86.4

86.4

86.5



1150

1200

1250

1300

1350

86.5

86.6

86.7

86.7

86.8

86.9

86.9

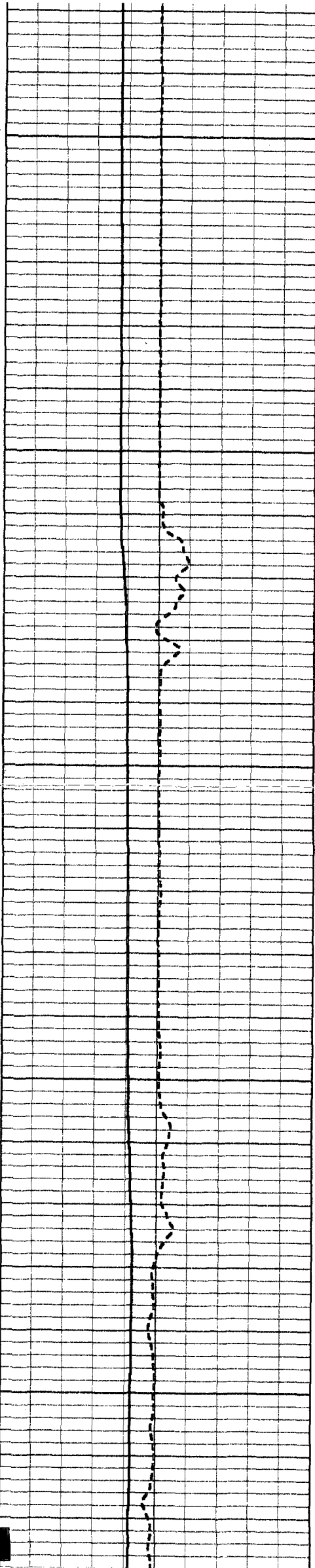
87.0

87.1

87.2

87.3

87.3



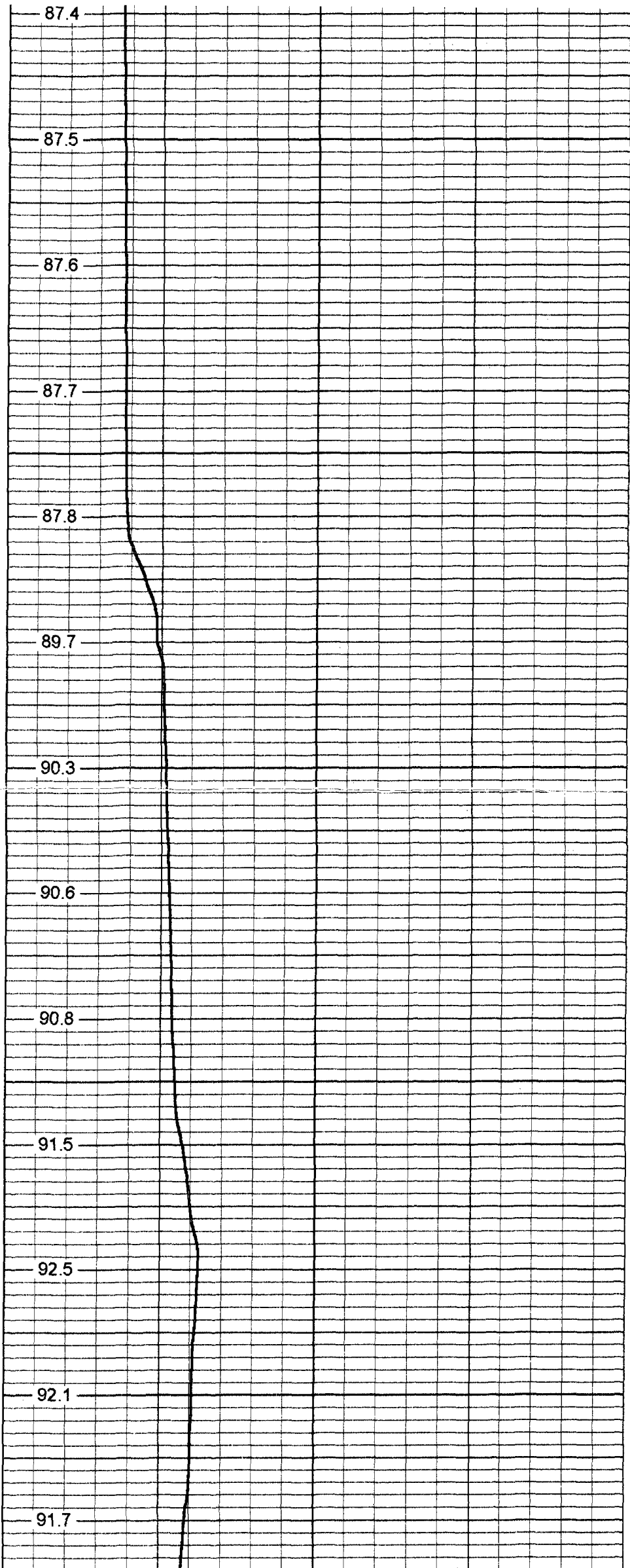
1400

1450

1500

1550

1600



87.4

87.5

87.6

87.7

87.8

89.7

90.3

90.6

90.8

91.5

92.5

92.1

91.7