



**YOUNGQUIST  
BROTHERS, Inc**  
GEOPHYSICAL LOGGING DIVISION

**HIGH RESOLUTION  
TEMPERATURE  
LOG**

Company **WATER RESOURCE SLTNS**  
Well **IW-1**  
Field **EAST PORT**  
County **CHARLOTTE**  
State **FLORIDA**

Company **WATER RESOURCE SOLUTIONS INC.**  
Well **DEEP INJECTION WELL #1**  
Field **EAST PORT**

County **CHARLOTTE** State **FLORIDA**

Location

**RECEIVED**  
DEC 20 2004

Other Services  
RTS

Permanent Datum  
Log Measured From  
Drilling Measured From

**DEEP - SURF - INJECTION**  
PAD  
PAD  
PAD

Elevation  
K.B.  
D.F.  
G.L.

Date 8-DEC-2004

Run Number	MIT 04
Depth Driller	3242'
Depth Logger	3117'
Bottom Logged Interval	3117'
Top Log Interval	SURFACE
Open Hole Size	N/A
Type Fluid	WATER
Density / Viscosity	NA
Max. Recorded Temp.	86 F
Estimated Cement Top	NA
Time Well Ready	1300
Time Logger on Bottom	1330
Equipment Number	103
Location	FT. MYERS
Recorded By	CATHEY
Witnessed By	G. SUSENDORF

Borehole Record		Tubing Record					
Run Number	Bit	From	To	Size	Weight	From	To

Casing Record	Size	Wgt/Ft	Top	Bottom
Surface String	8"	.500" W.T.	SURFACE	2977'
Prot. String				
Production String				
Liner				

<<< Fold Here >>>

All interpretations are opinions based on inferences from electrical or other measurements and we cannot and do not guarantee the accuracy or correctness of any interpretation, and we shall not, except in the case of gross or willful negligence on our part, be liable or responsible for any loss, costs, damages, or expenses incurred or sustained by anyone resulting from any interpretation made by any of our officers, agents or employees. These interpretations are also subject to our general terms and conditions set out in our current Price Schedule.

Comments



**TEMPERATURE PASS**

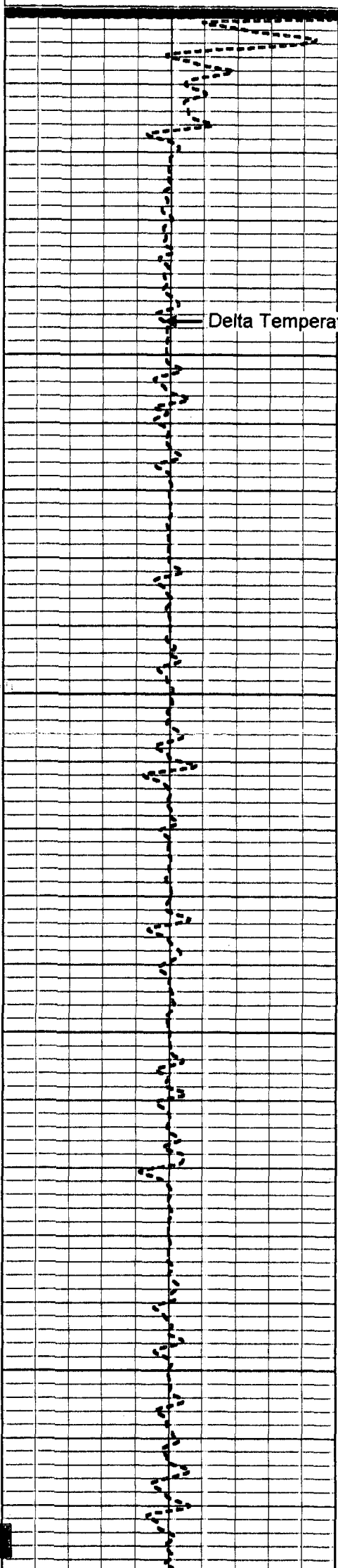
Database File: eportrts.db  
Dataset Pathname: temp  
Presentation Format: temp

-1 DELTA TEMPERATURE (degF) 1

70

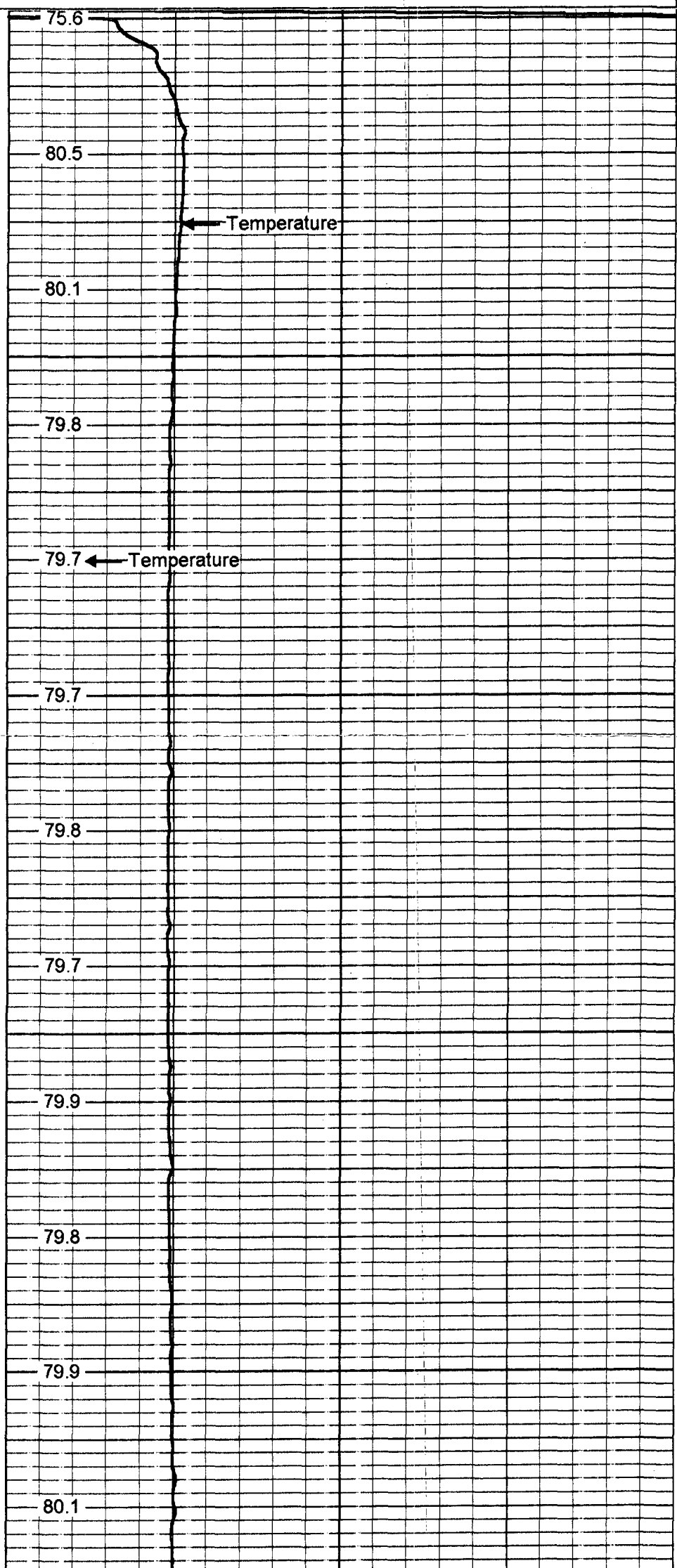
TEMPERATURE (degF)

110



Delta Temperature

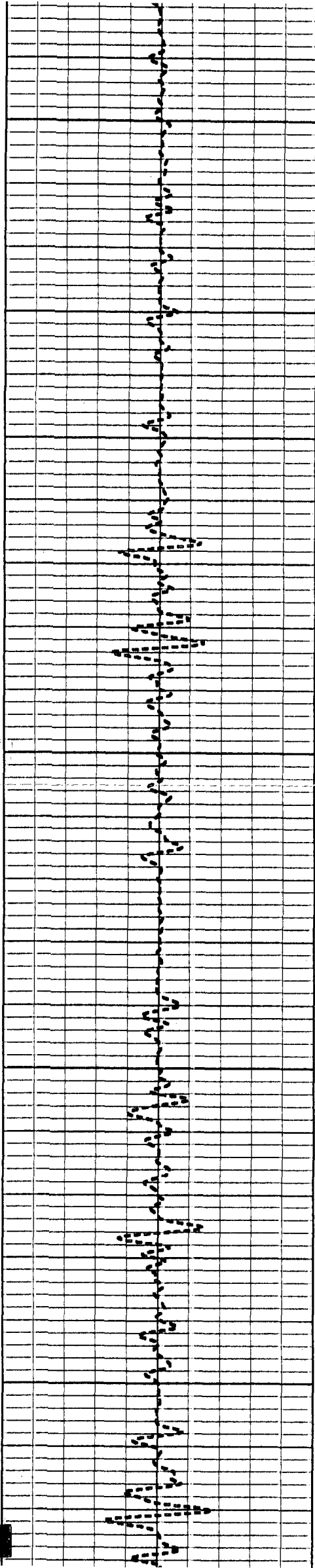
0  
50  
100  
150  
200



Temperature

Temperature

75.6  
80.5  
80.1  
79.8  
79.7  
79.7  
79.8  
79.7  
79.9  
79.8  
79.9  
80.1



250

300

350

400

450

79.9

80.0

80.2

80.2

80.3

80.4

80.6

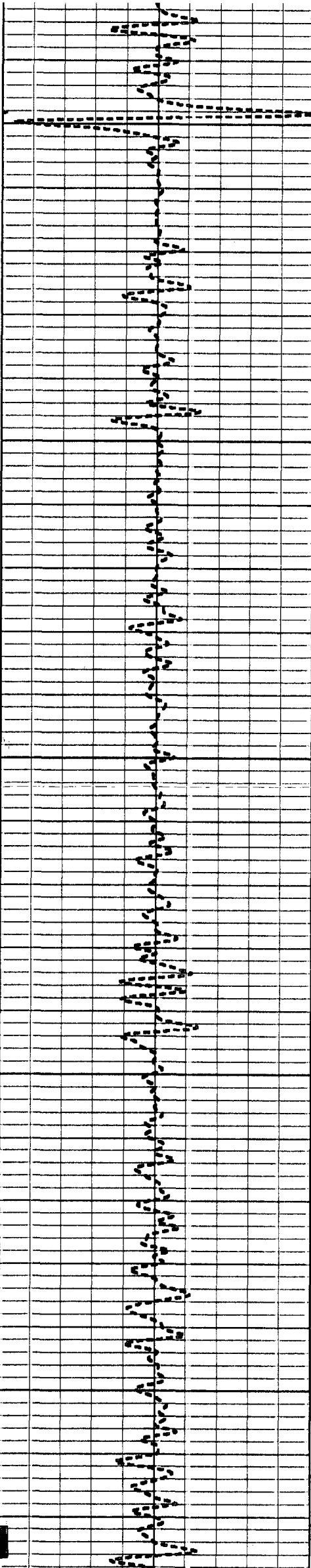
80.7

80.8

80.8

81.0

81.1



500

550

600

650

700

82.0

81.5

81.5

81.5

81.6

81.6

81.5

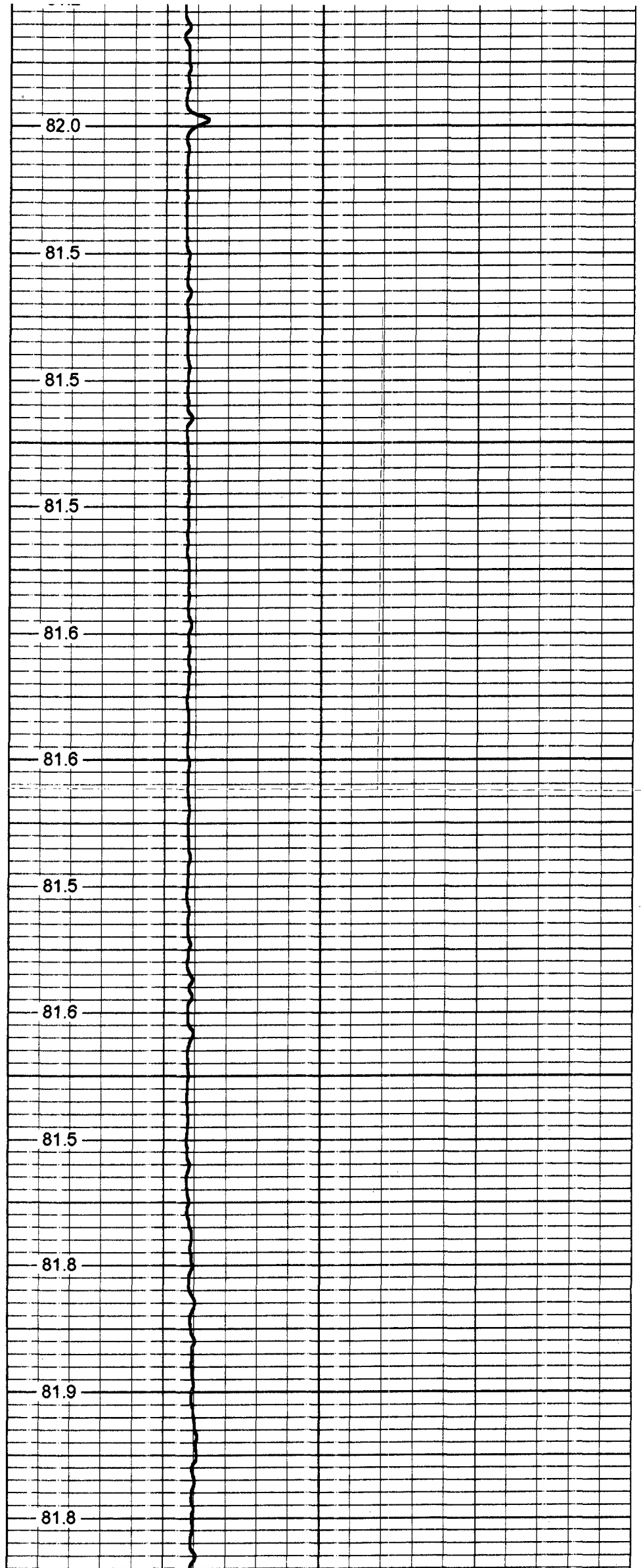
81.6

81.5

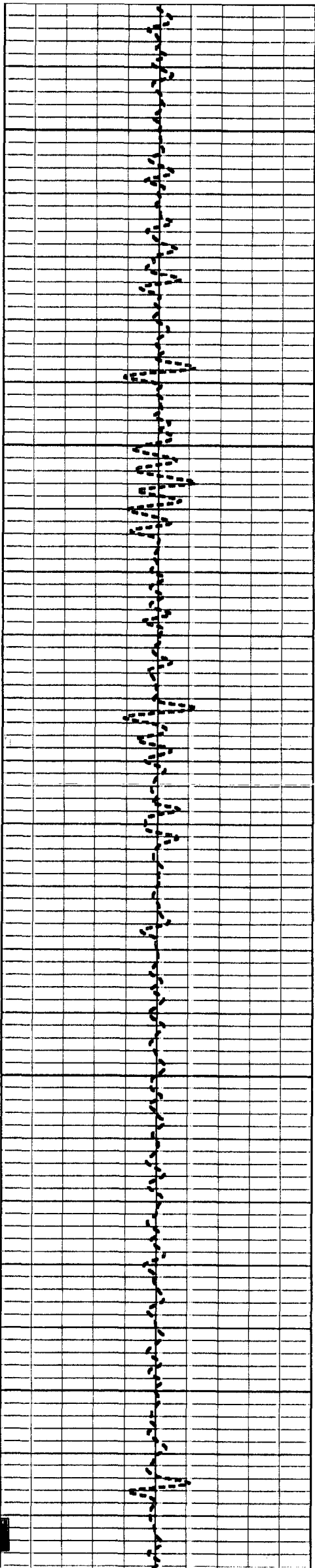
81.8

81.9

81.8







750

800

850

900

950

81.8

81.9

81.9

82.3

82.0

81.9

82.0

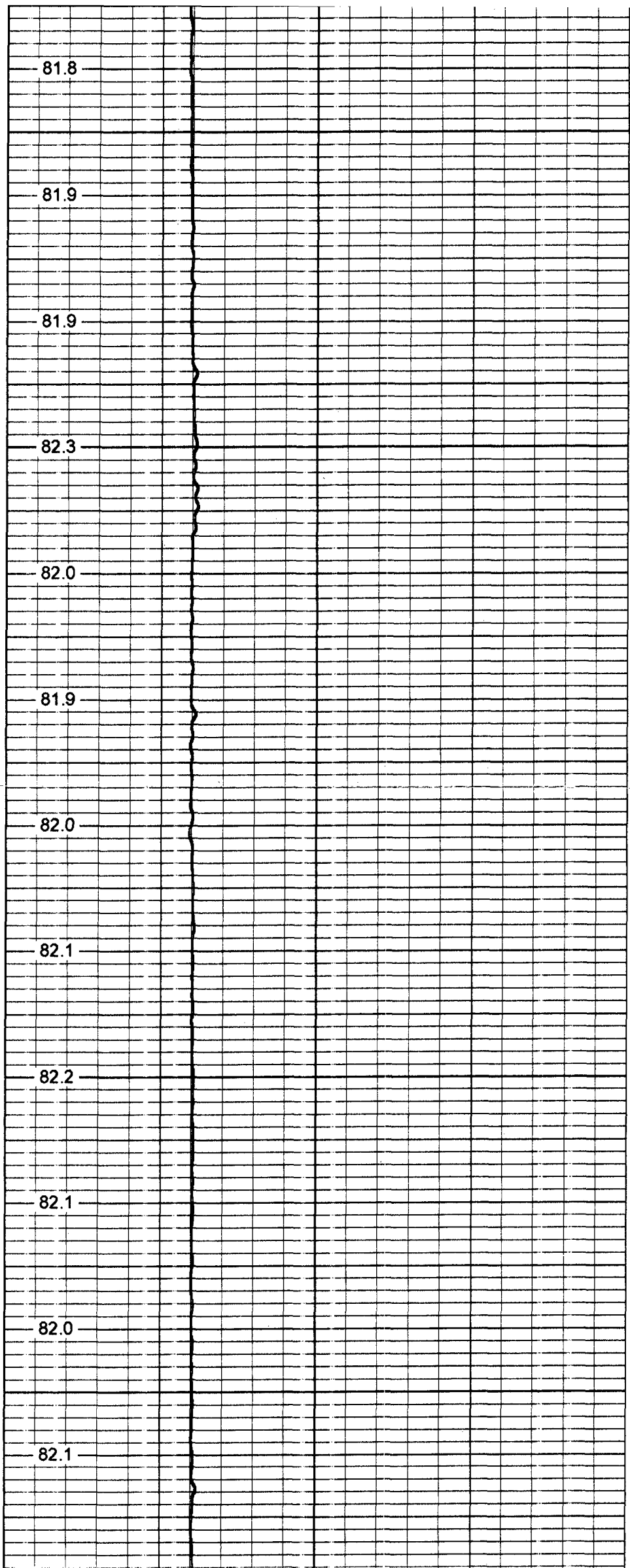
82.1

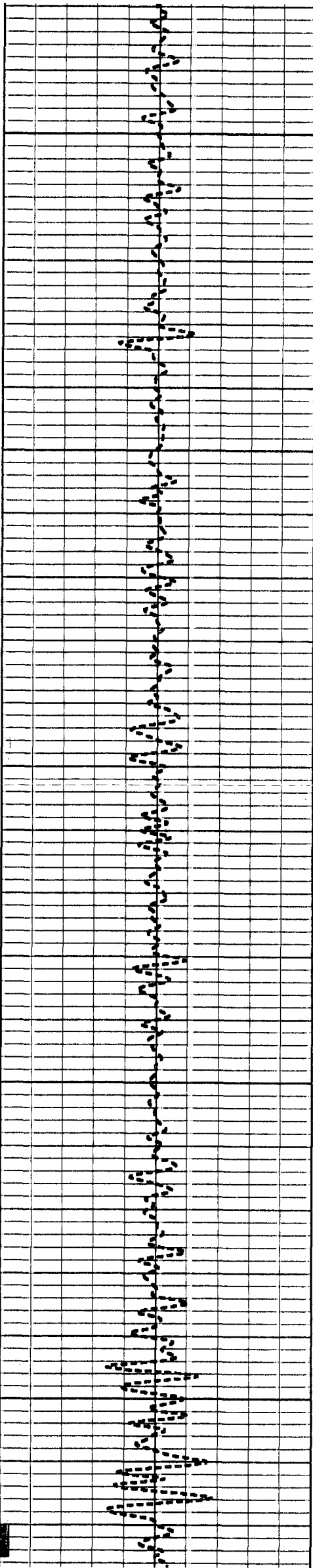
82.2

82.1

82.0

82.1





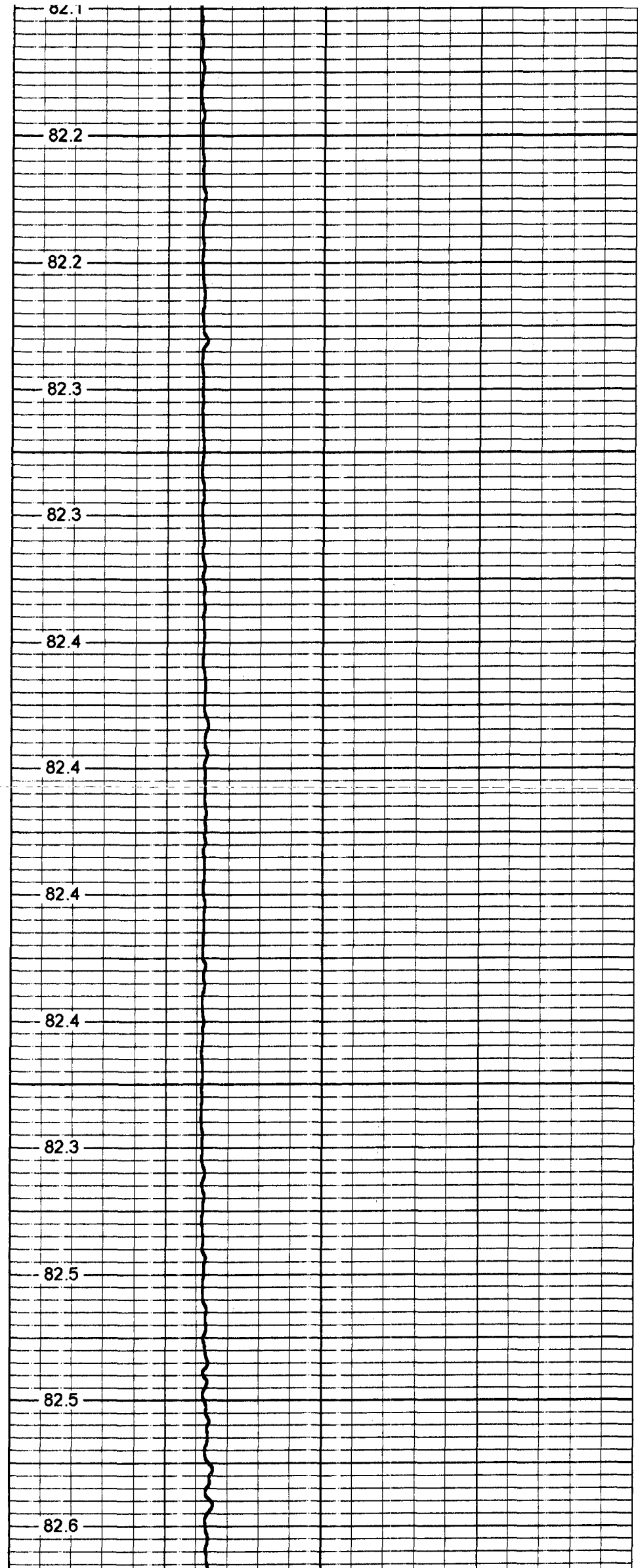
1000

1050

1100

1150

1200



82.1

82.2

82.2

82.3

82.3

82.4

82.4

82.4

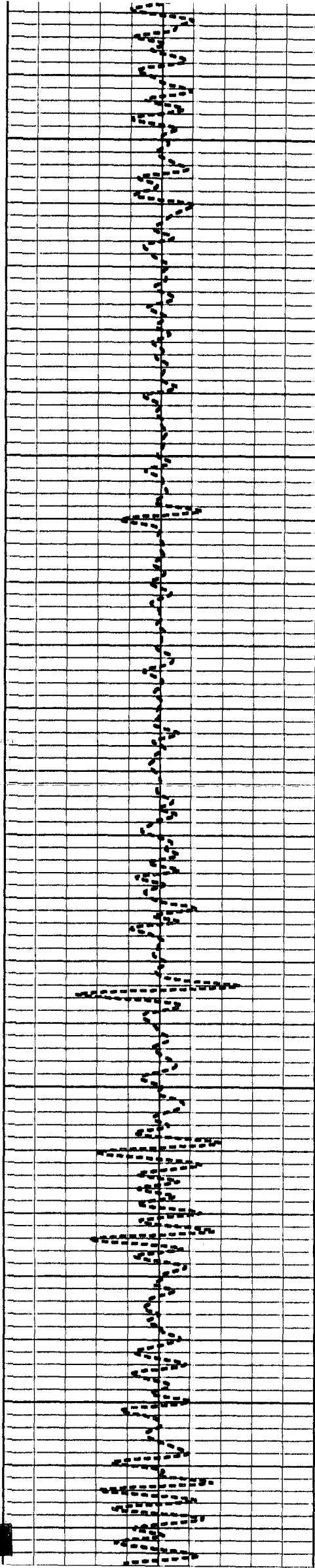
82.4

82.3

82.5

82.5

82.6



1250

1300

1350

1400

1450

82.8

82.9

83.1

83.2

83.2

83.1

83.1

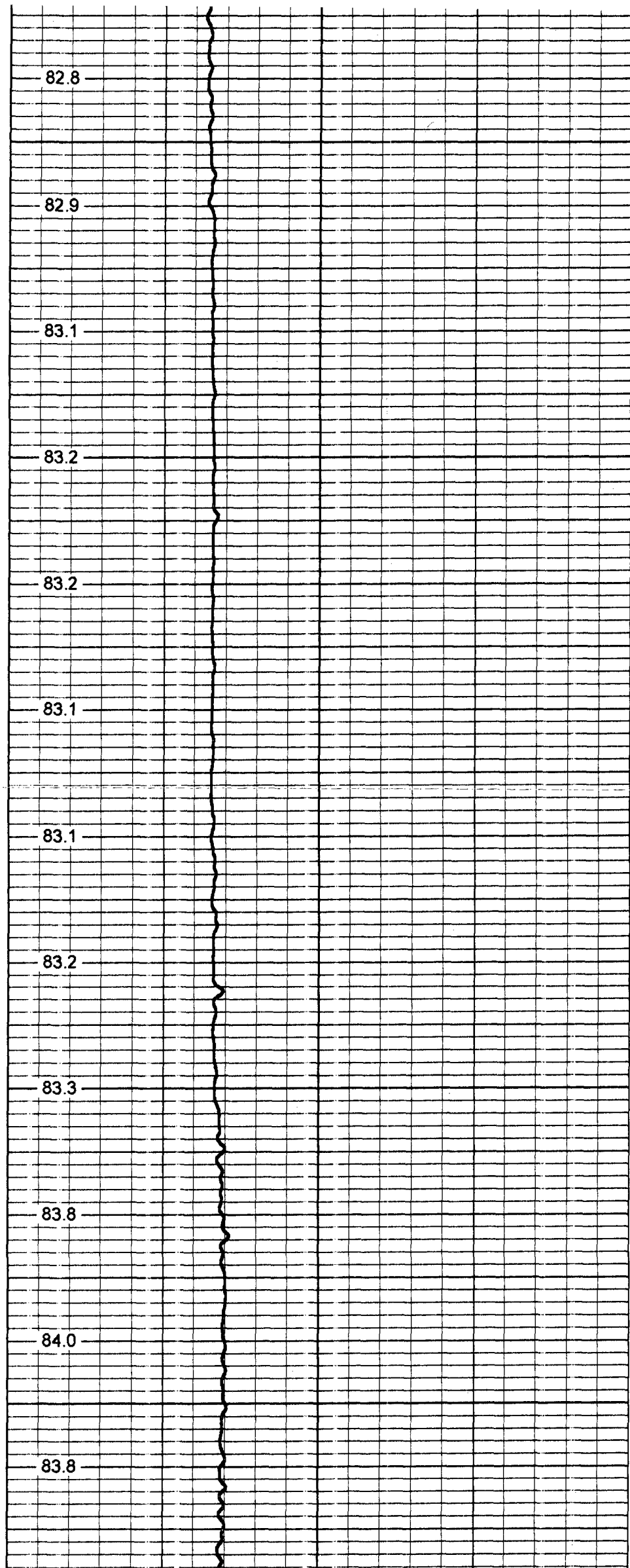
83.2

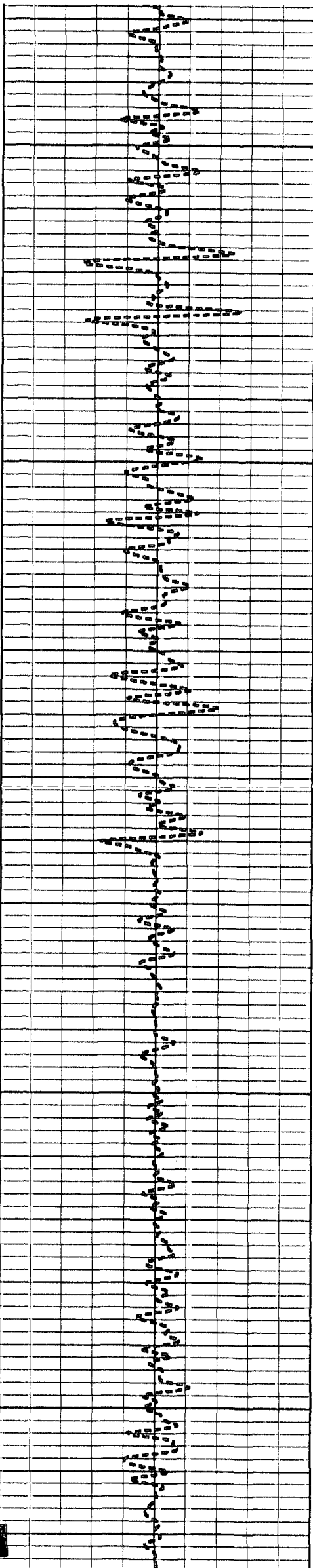
83.3

83.8

84.0

83.8





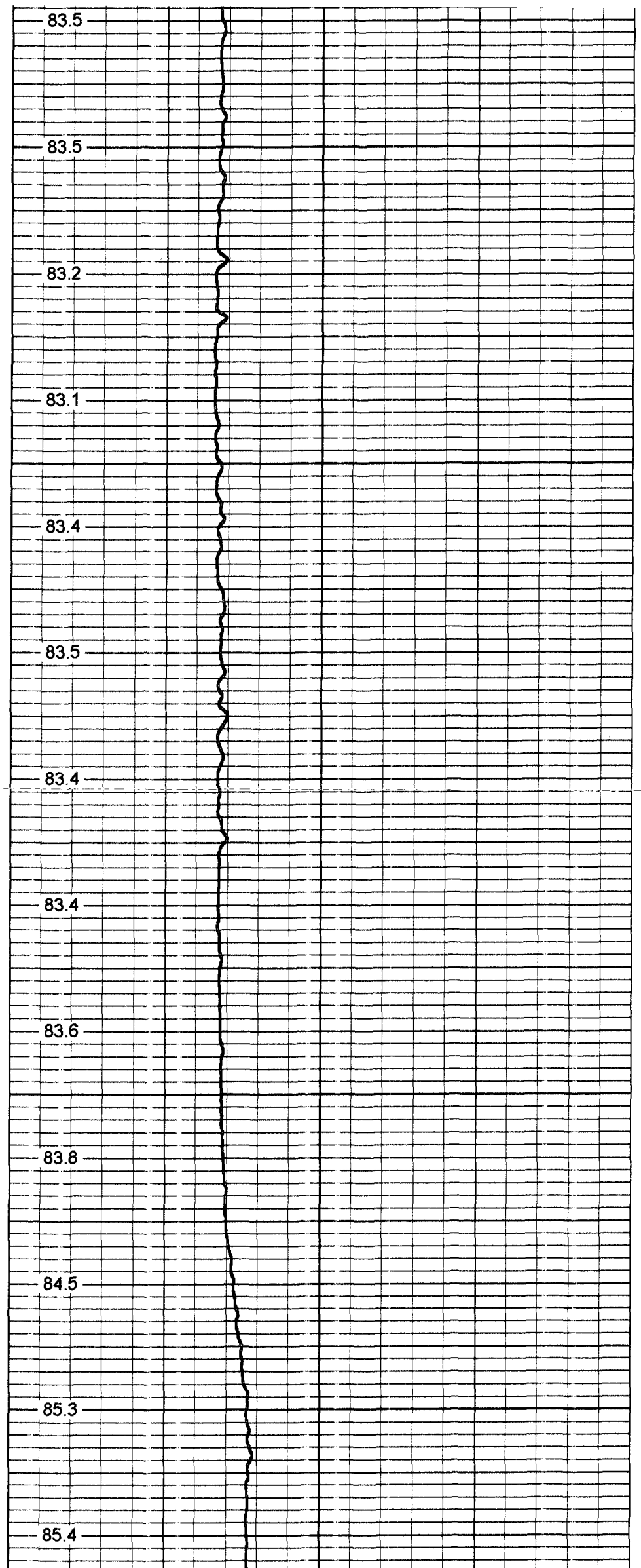
1500

1550

1600

1650

1700



83.5

83.5

83.2

83.1

83.4

83.5

83.4

83.4

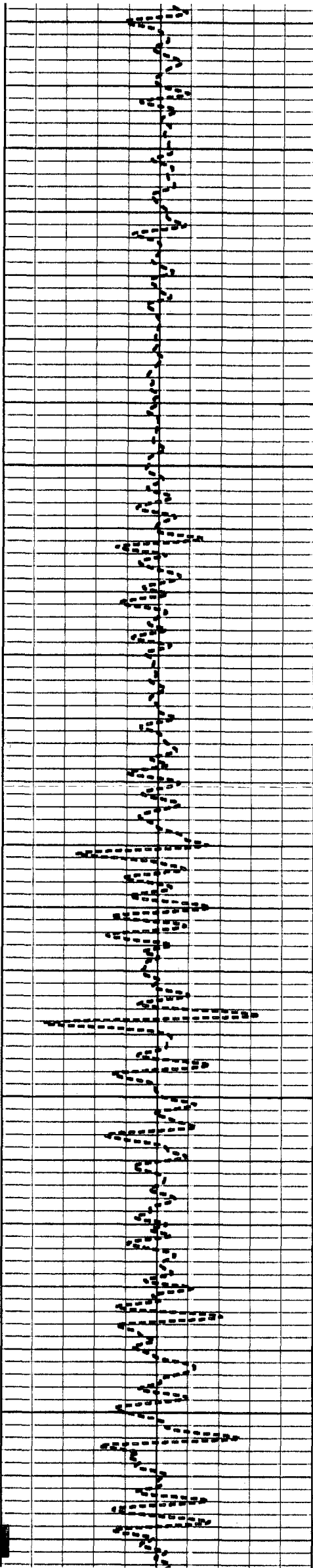
83.6

83.8

84.5

85.3

85.4



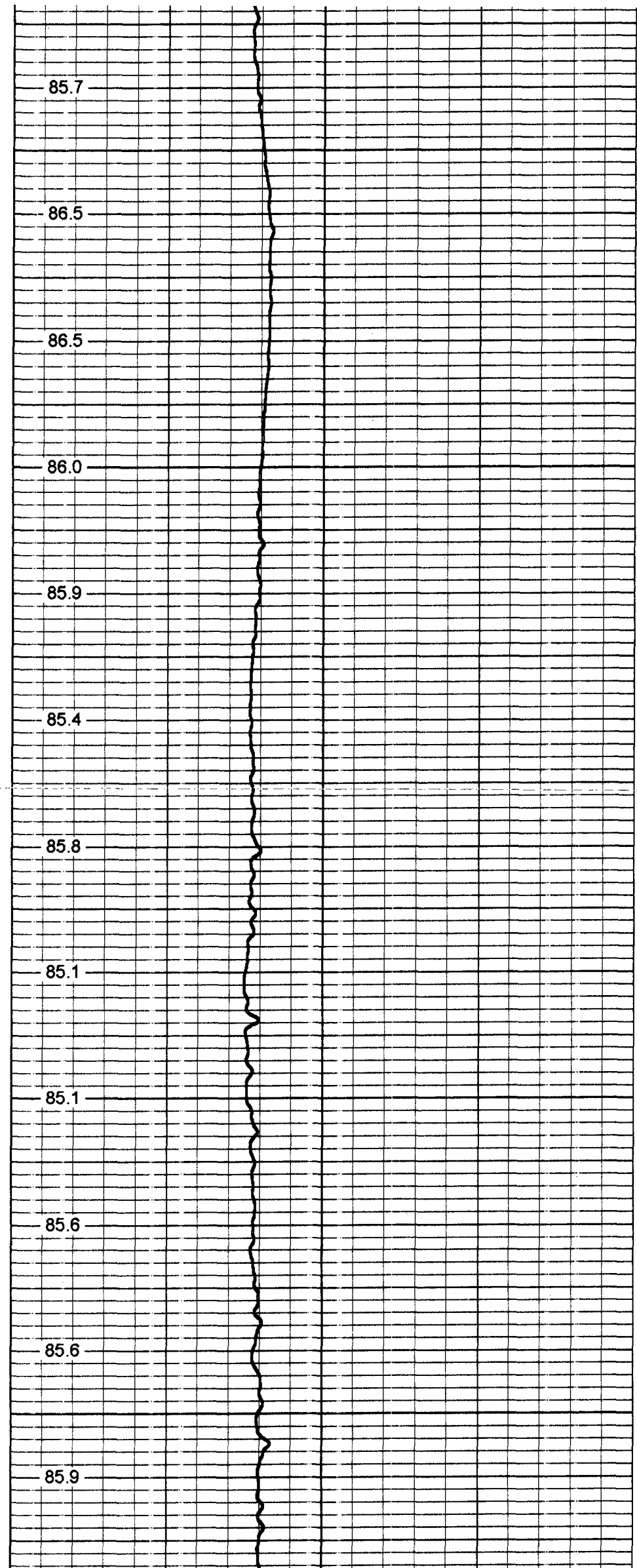
1750

1800

1850

1900

1950



85.7

86.5

86.5

86.0

85.9

85.4

85.8

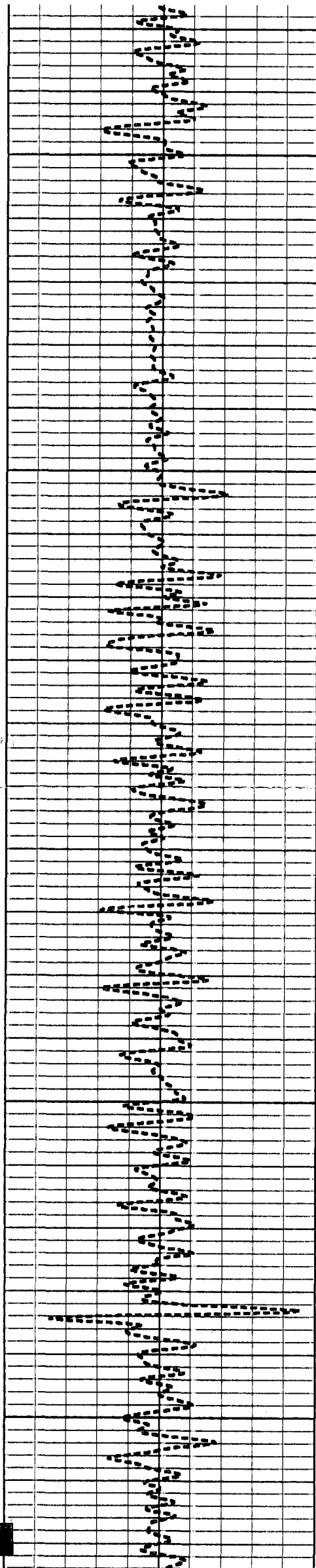
85.1

85.1

85.6

85.6

85.9



2000

2050

2100

2150

2200

86.1

86.6

85.8

84.6

84.2

84.2

84.2

84.2

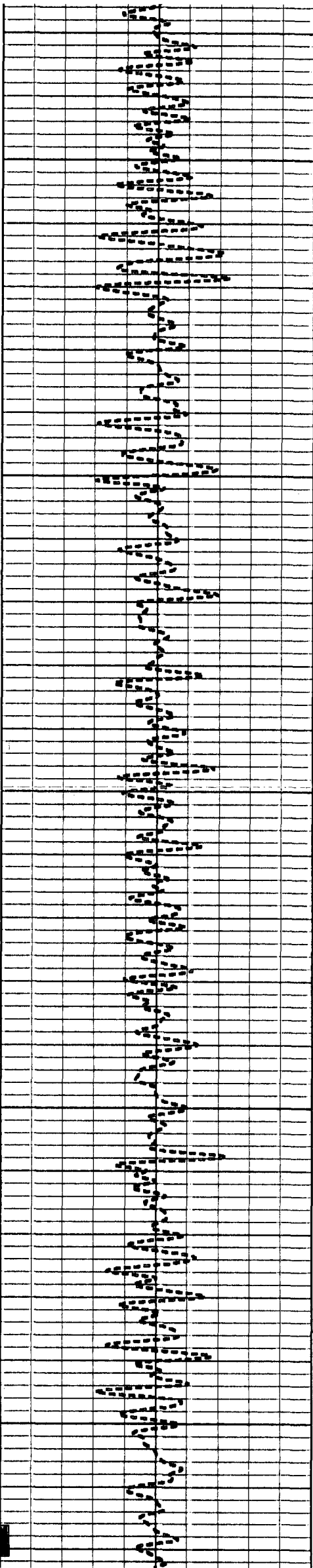
84.0

84.3

84.2

84.4

84.1



2250

2300

2350

2400

2450

84.1

84.4

84.7

84.9

84.8

84.3

84.8

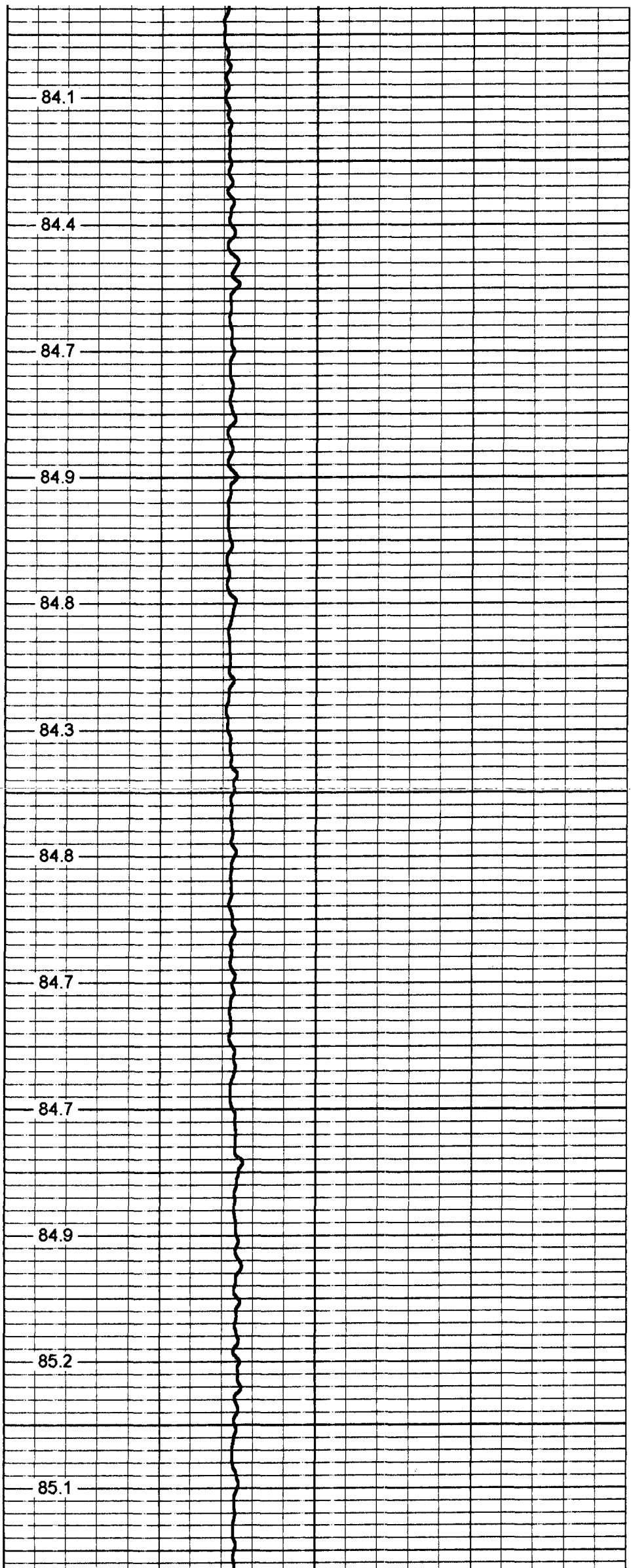
84.7

84.7

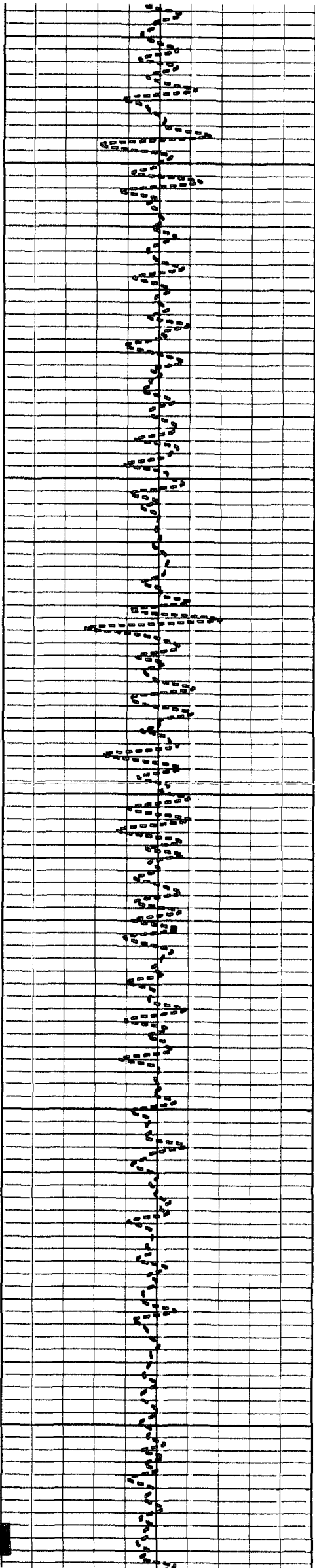
84.9

85.2

85.1







2500

2550

2600

2650

2700

84.8

84.8

84.6

84.7

84.6

84.7

84.6

84.7

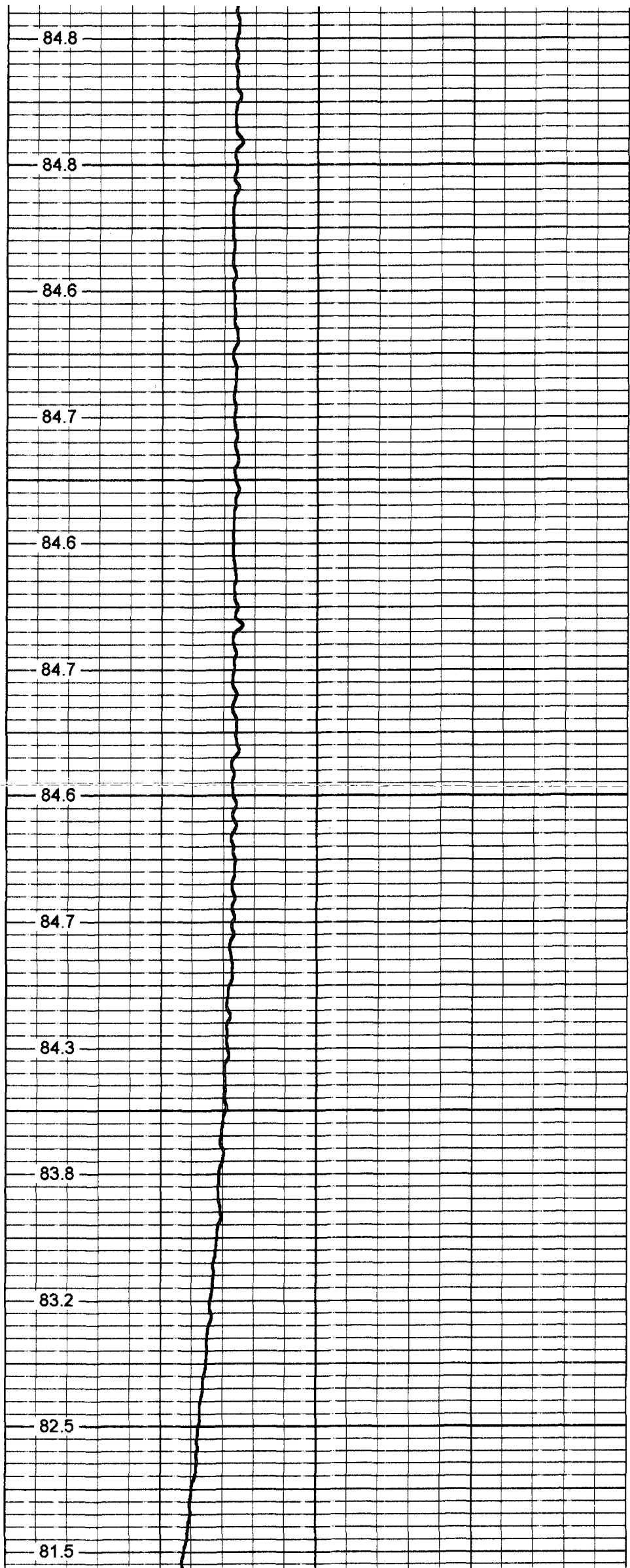
84.3

83.8

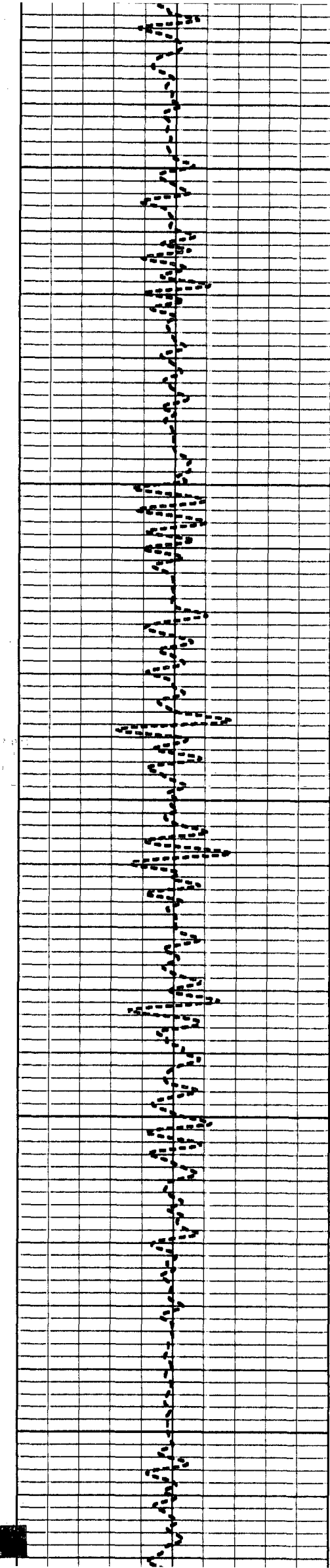
83.2

82.5

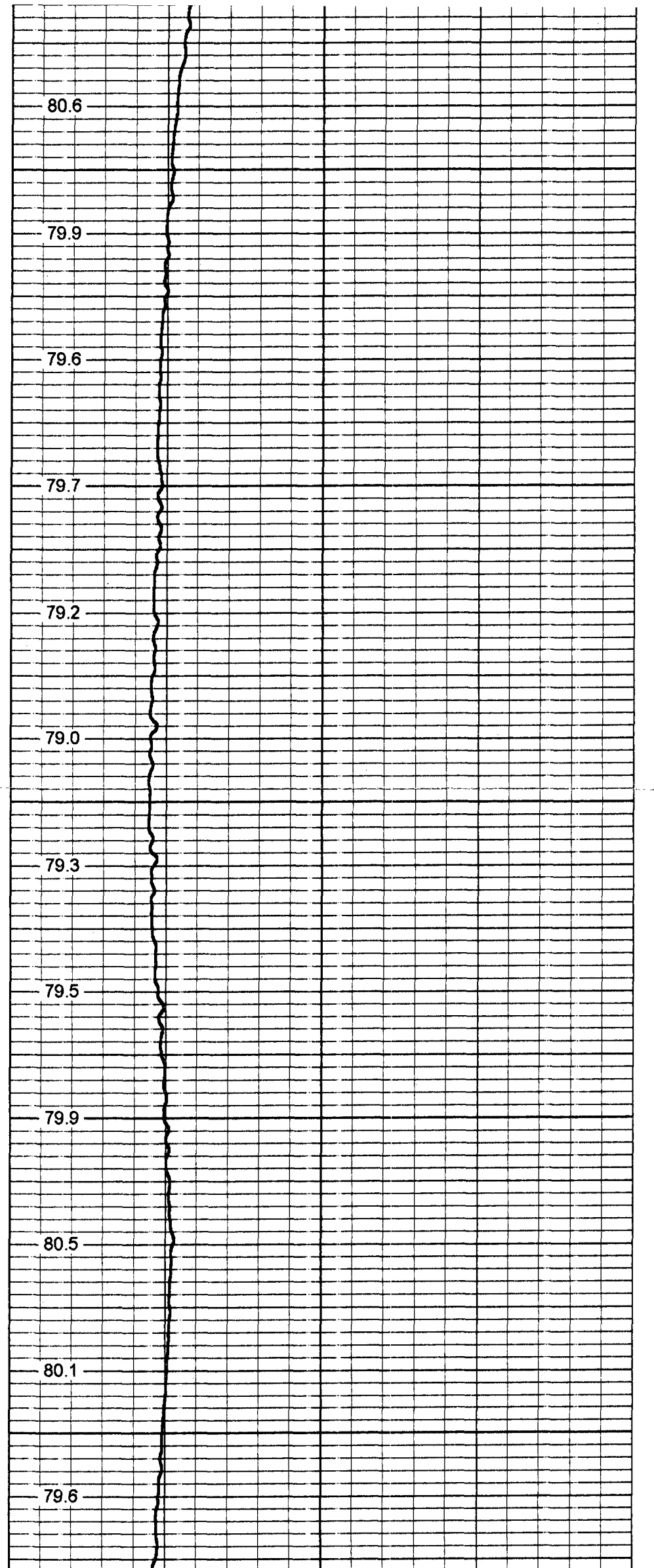
81.5

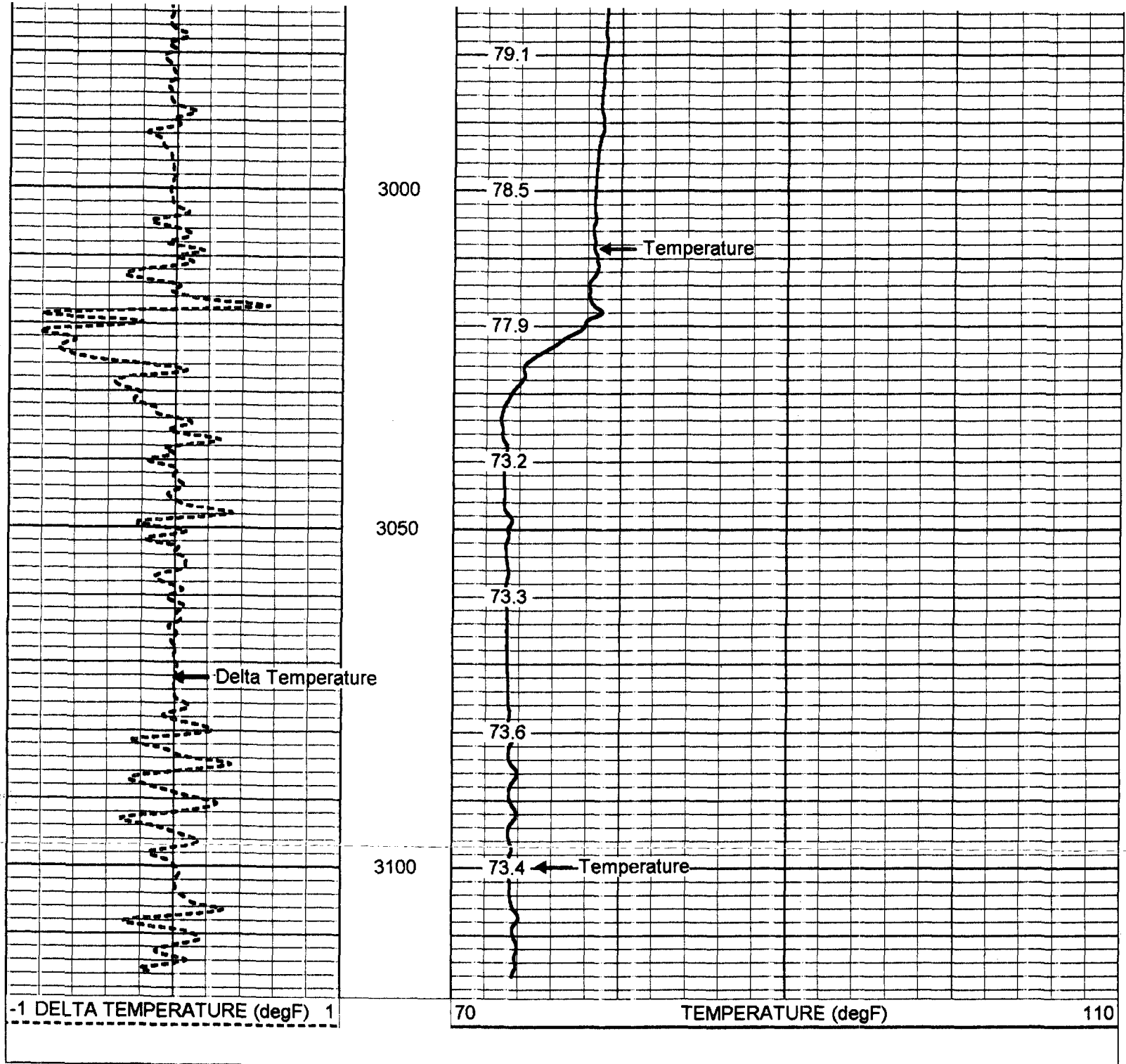






2750  
2800  
2850  
2900  
2950

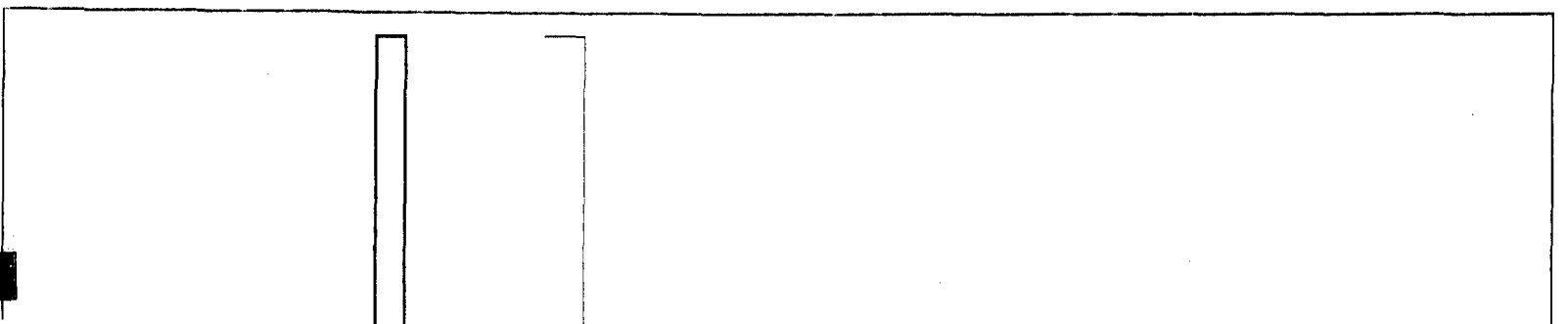




Temperature Calibration Report

Serial Number: 954  
 Tool Model: RTS  
 Performed: Wed Feb 28 14:27:36 2001

Point #	Reading		Reference	
1	338.011	cps	34	degF
2	789.31	cps	78	degF
3	1553.28	cps	152	degF



TEMP-RTS (954)  
70.00 lb 1.69 in OD 25.50 ft

TEMP 0.10 ft

Dataset:	run1/pass1
Total Length:	25.50 ft
Total Weight:	70.00 lb
O.D.	1.69 in