

ALL INTERPRETATIONS ARE OPINIONS BASED ON INFERENCES FROM ELECTRICAL OR OTHER MEASUREMENTS AND WE CANNOT AND DO NOT GUARANTEE THE ACCURACY OR CORRECTNESS OF ANY INTERPRETATION, AND WE SHALL NOT, EXCEPT IN THE CASE OF GROSS OR WILLFULL NEGLIGENCE ON OUR PART, BE LIABLE OR RESPONSIBLE FOR ANY LOSS, COSTS, DAMAGES, OR EXPENSES INCURRED OR SUSTAINED BY ANYONE RESULTING FROM ANY INTERPRETATION MADE BY ANY OF OUR OFFICERS, AGENTS OR EMPLOYEES. THESE INTERPRETATIONS ARE ALSO SUBJECT TO OUR GENERAL TERMS AND CONDITIONS SET OUT IN OUR CURRENT PRICE SCHEDULE.

REMARKS

RADIOACTIVE TRACER/TEMPERATURE TOOL STRING CONFIGURATION

-- RADIOACTIVE TRACER/TEMPERATURE TOOL

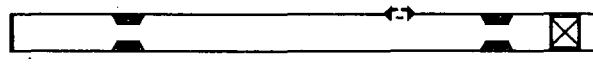
-- UPPER GR -- 23.5 FT. FROM BOT

-- TOTAL TOOL STRING LENGTH = 27.5 FT.--

-- EJECTOR PORT -- 13.5 FT. FROM BOT

-- MIDDLE GR -- 11 FT. FROM BOT

-- CCL -- 9.5 FT. FROM BOT



-- LOWER GR -- 1 FT. FROM BOT
 -- BOT -- TEMPERATURE MEASURE POINT

REMARKS
 BASE PASS
 DATA OBTAINED GOING DOWN

VERSION: 2.16

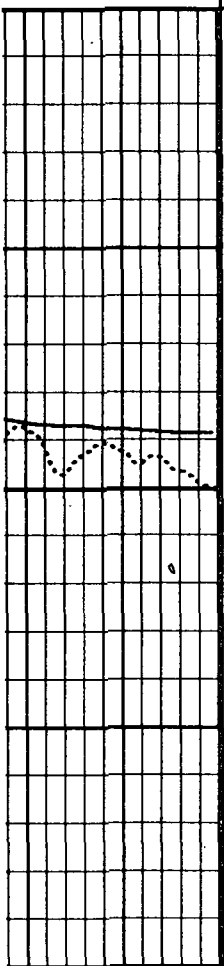
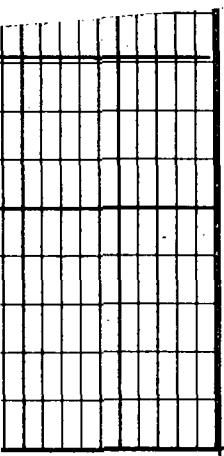
PCIM1TEMP1

FINISH DEPTH: 3197.7 FEET DIRECTION: DOWN DATE: 12/29/94 TIME: 10:16:50 MODE: TRACE PLAYBACK

..... DELTA TEMPERATURE
 -1.0
 1.0

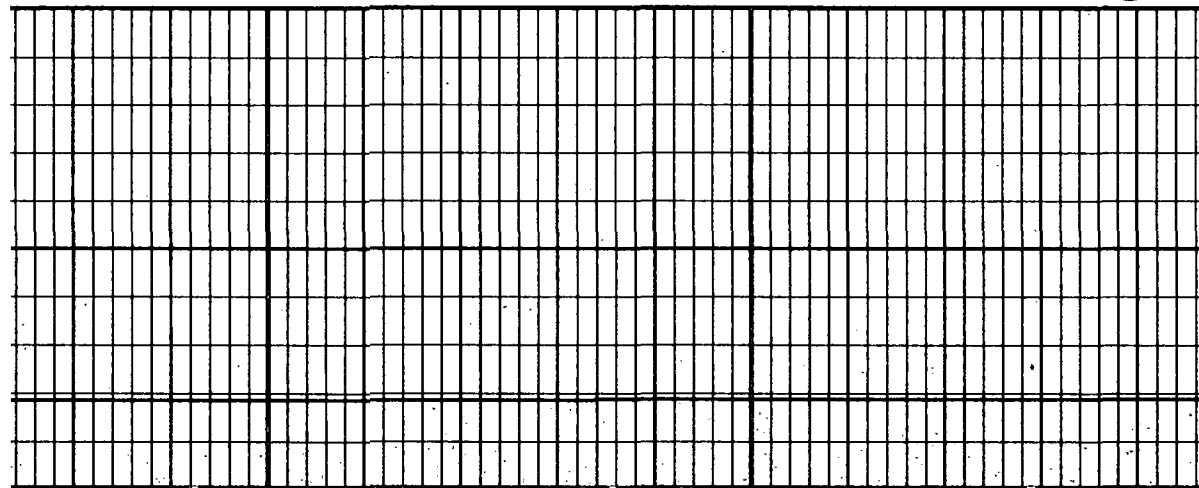
MC: TEMPERATURE
 DEGREES 150

60 TEMPERATURE DEGREES 80





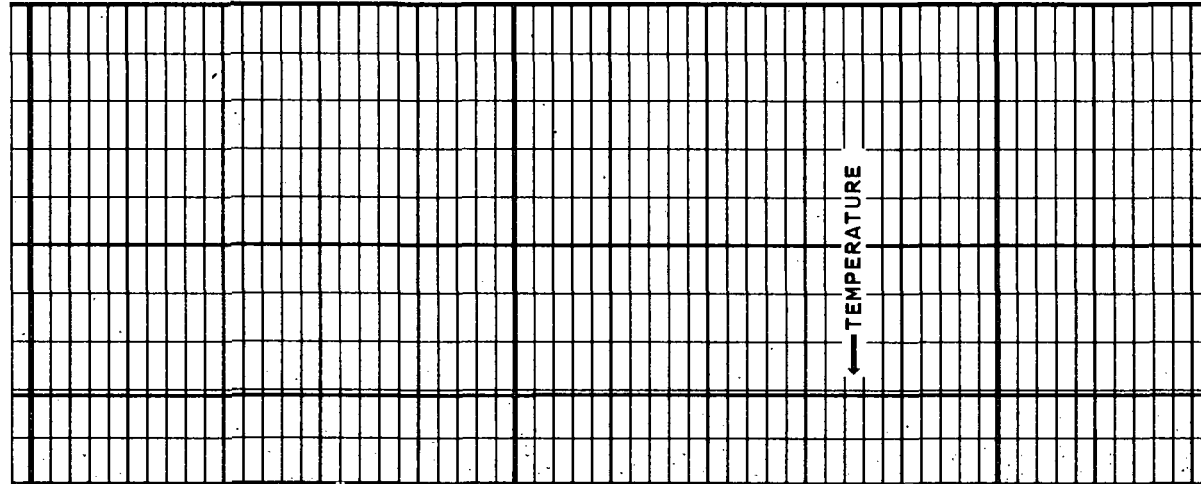
100

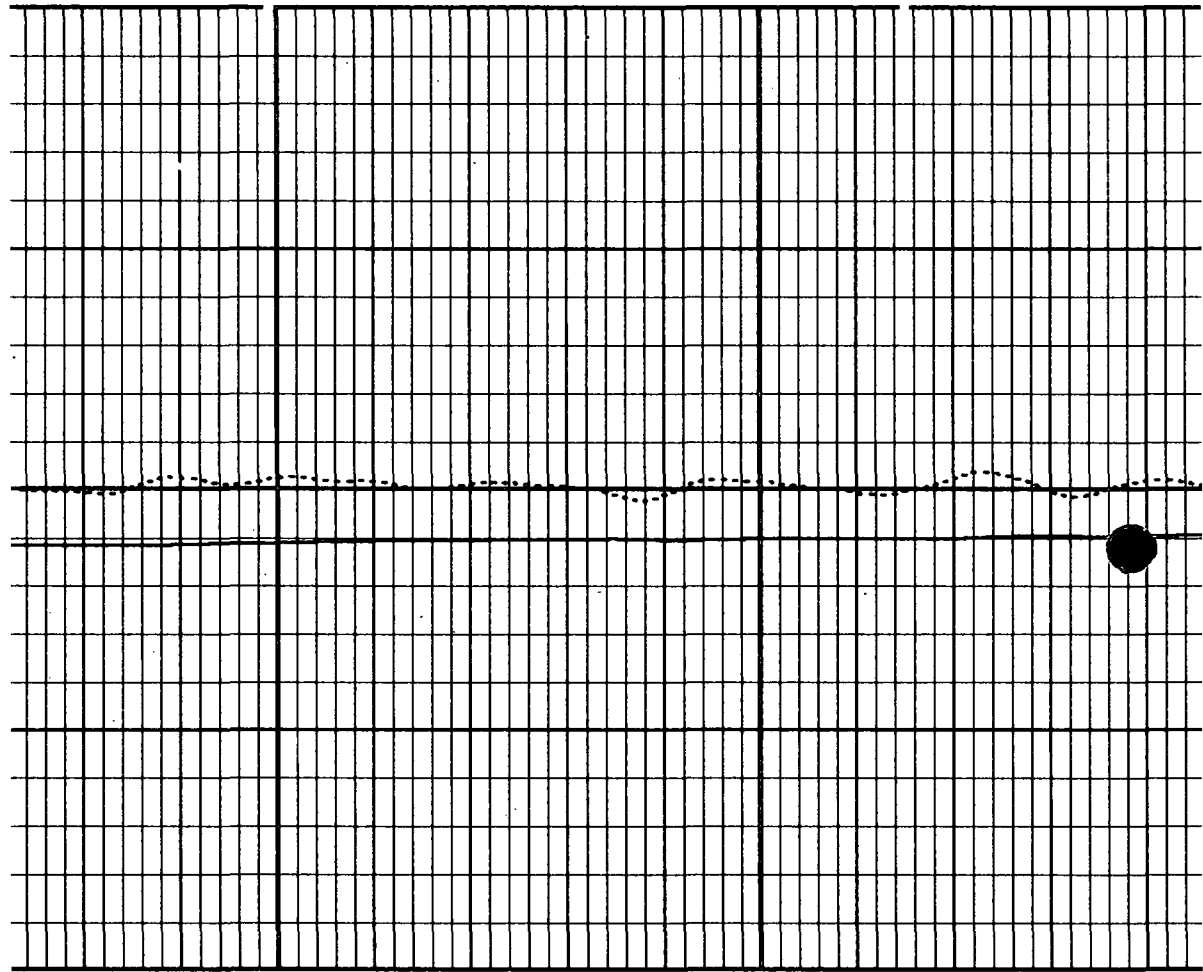


← TEMPERATURE

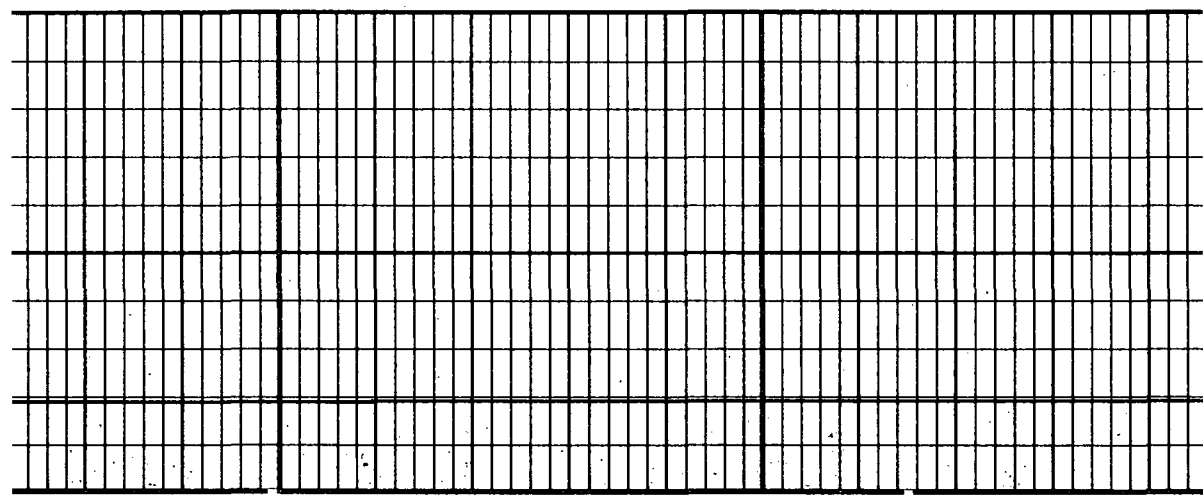
← DELTA TEMPERATURE

← TEMPERATURE





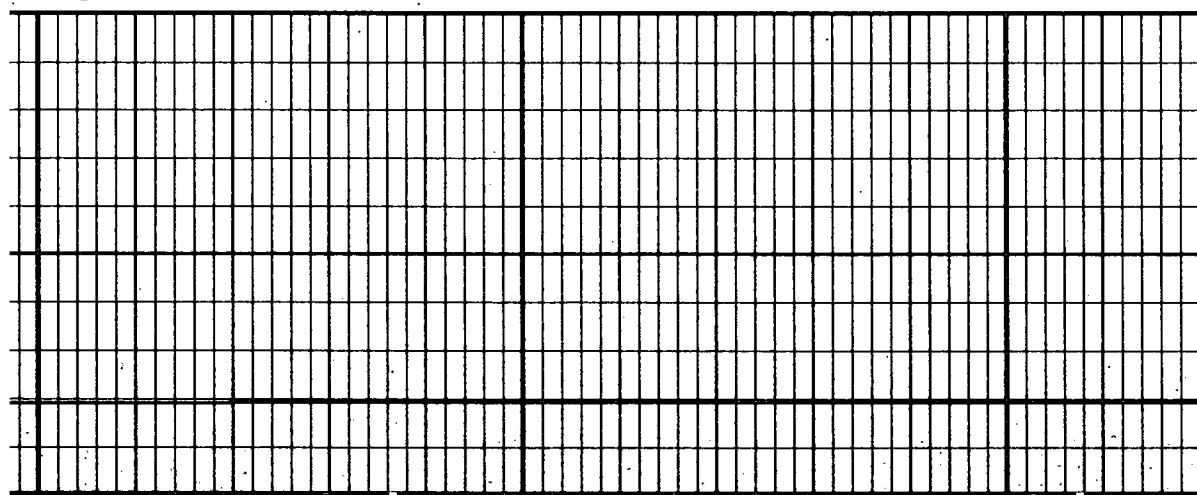
300





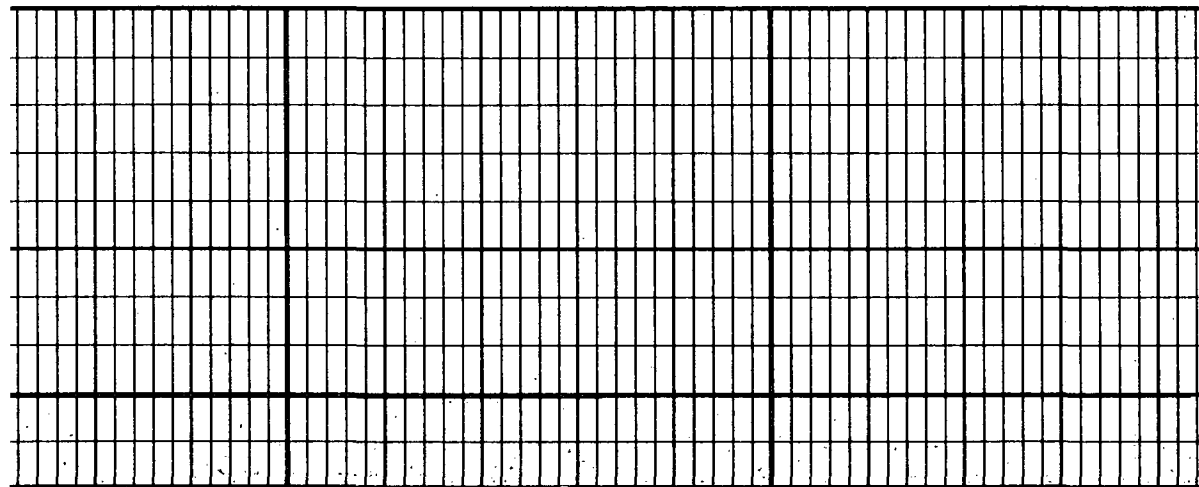
400

500



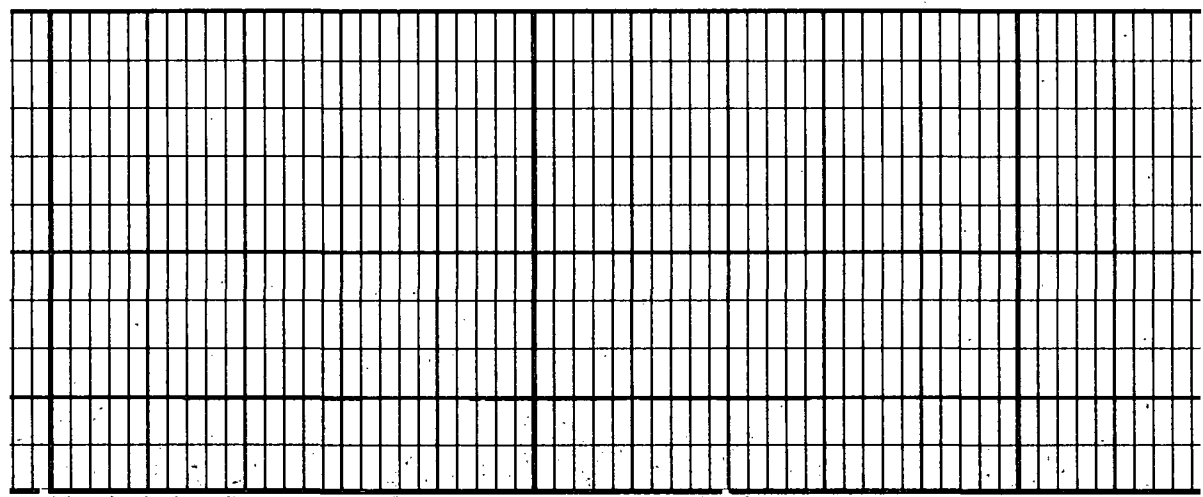


600



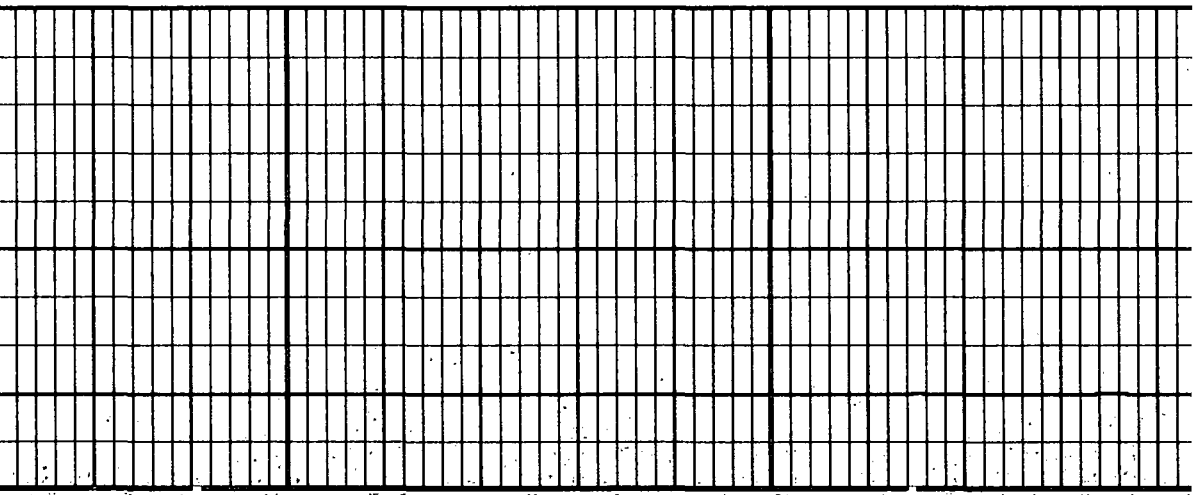


700





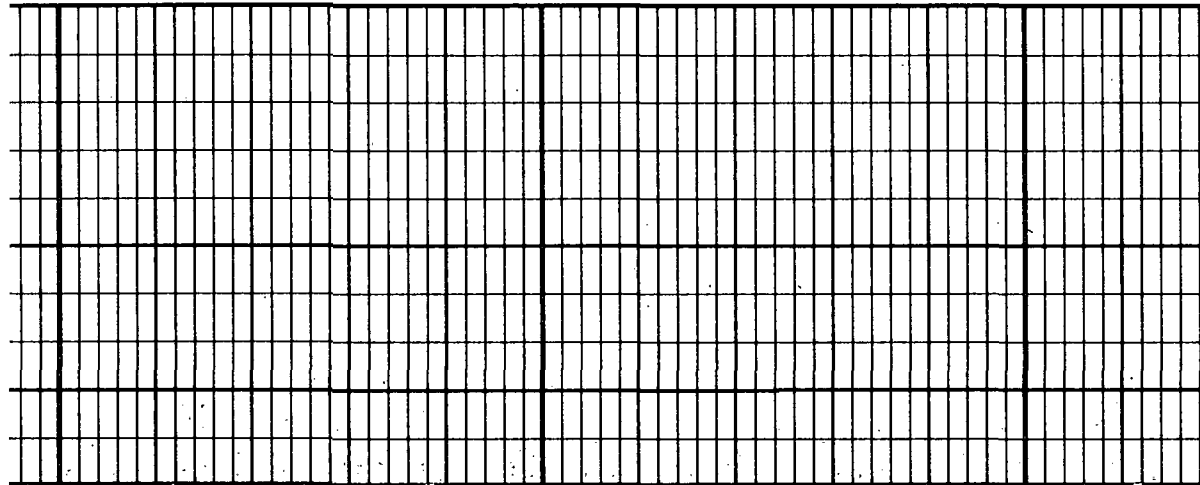
800





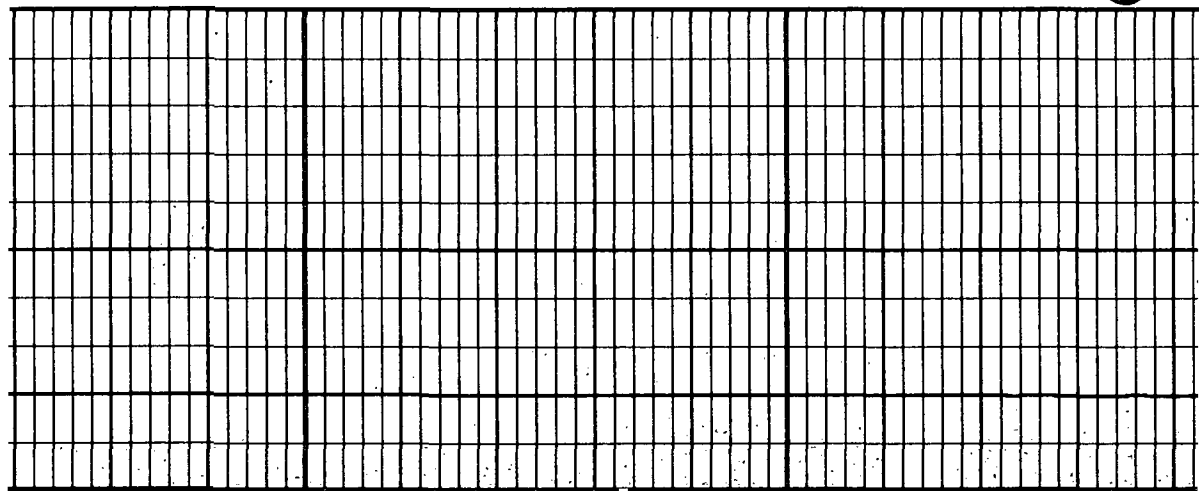
900

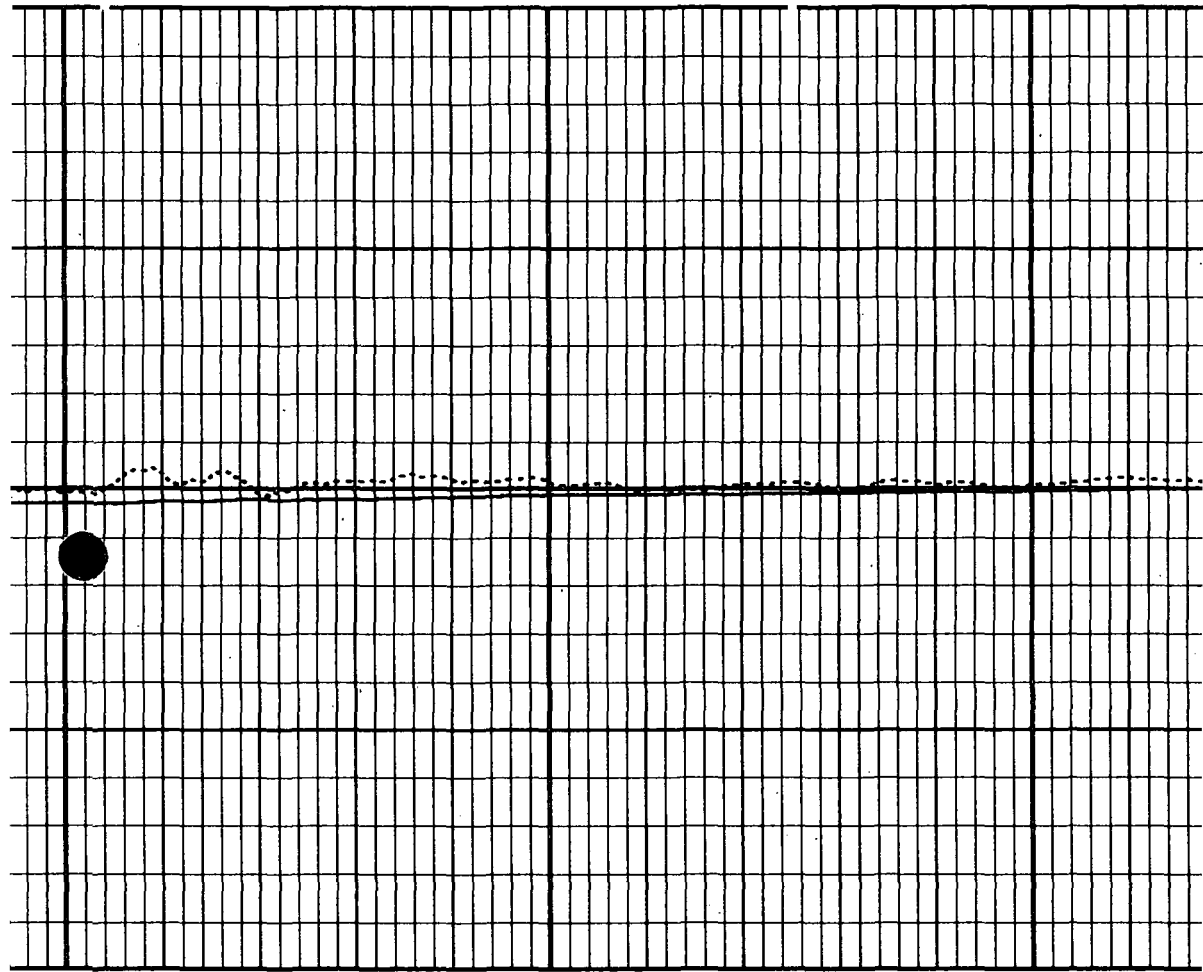
1000



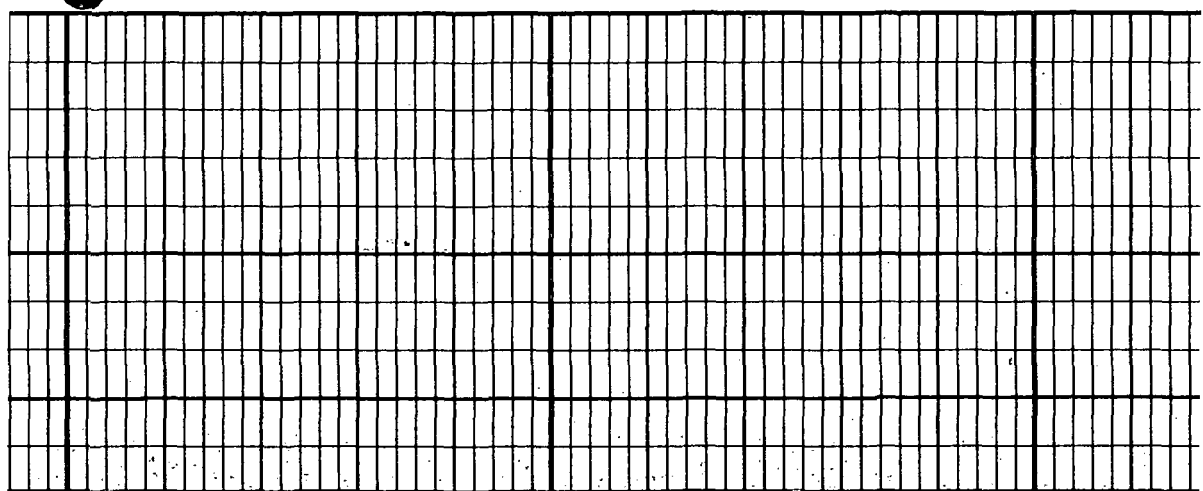


1100



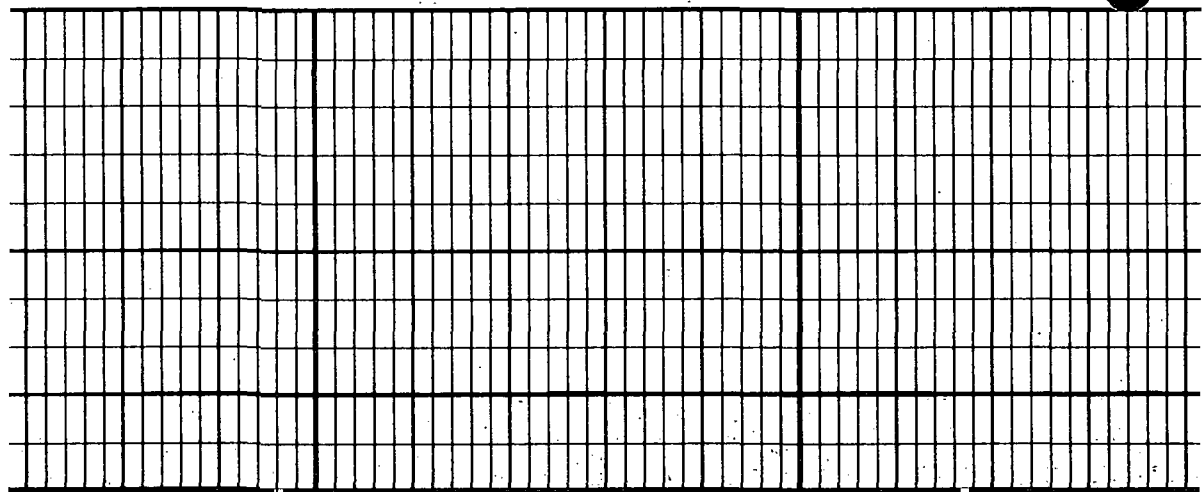


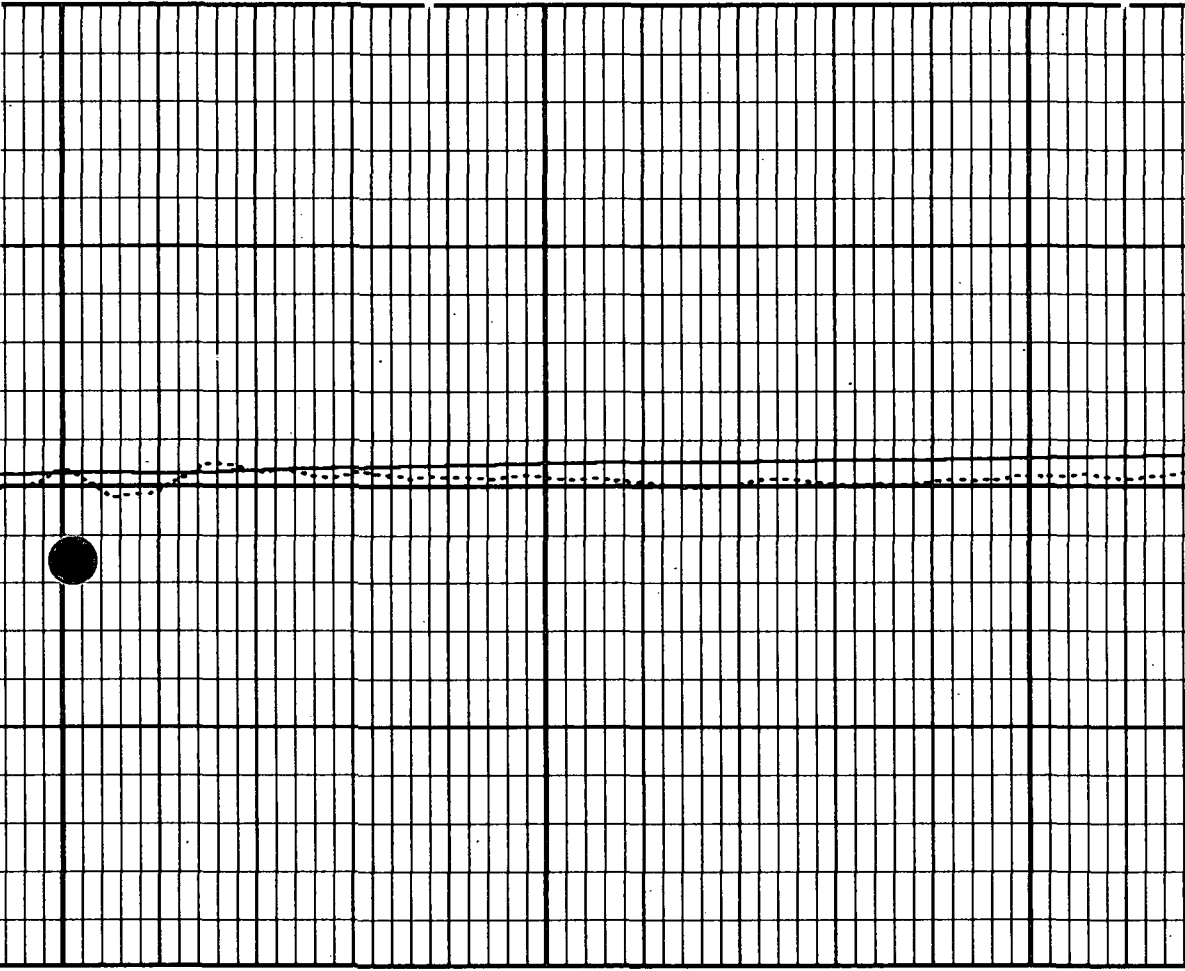
1200





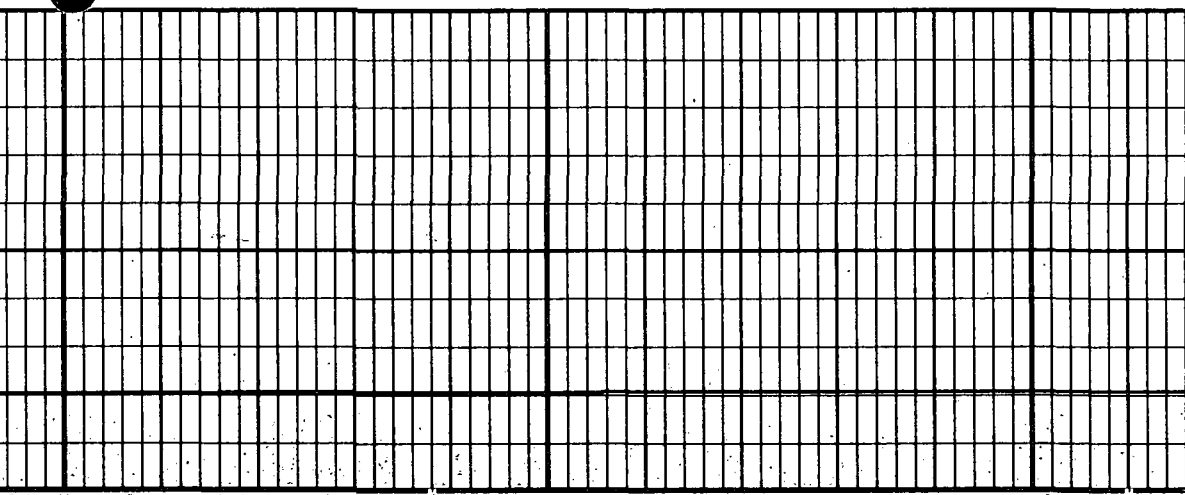
1300





1400

1500



← TEMPERATURE

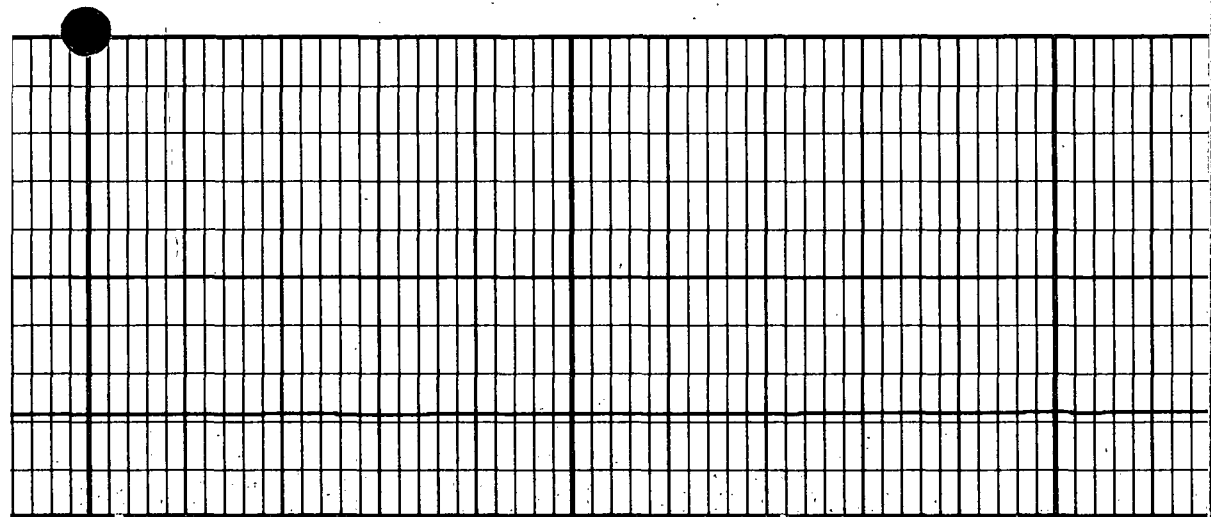
← DELTA TEMPERATURE

← TEMPERATURE

1600

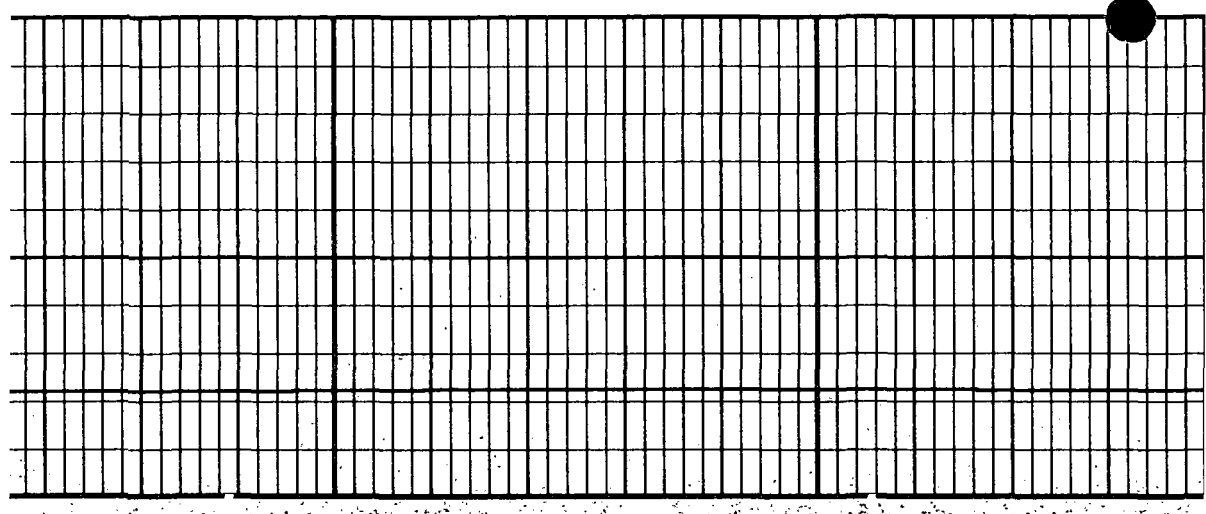


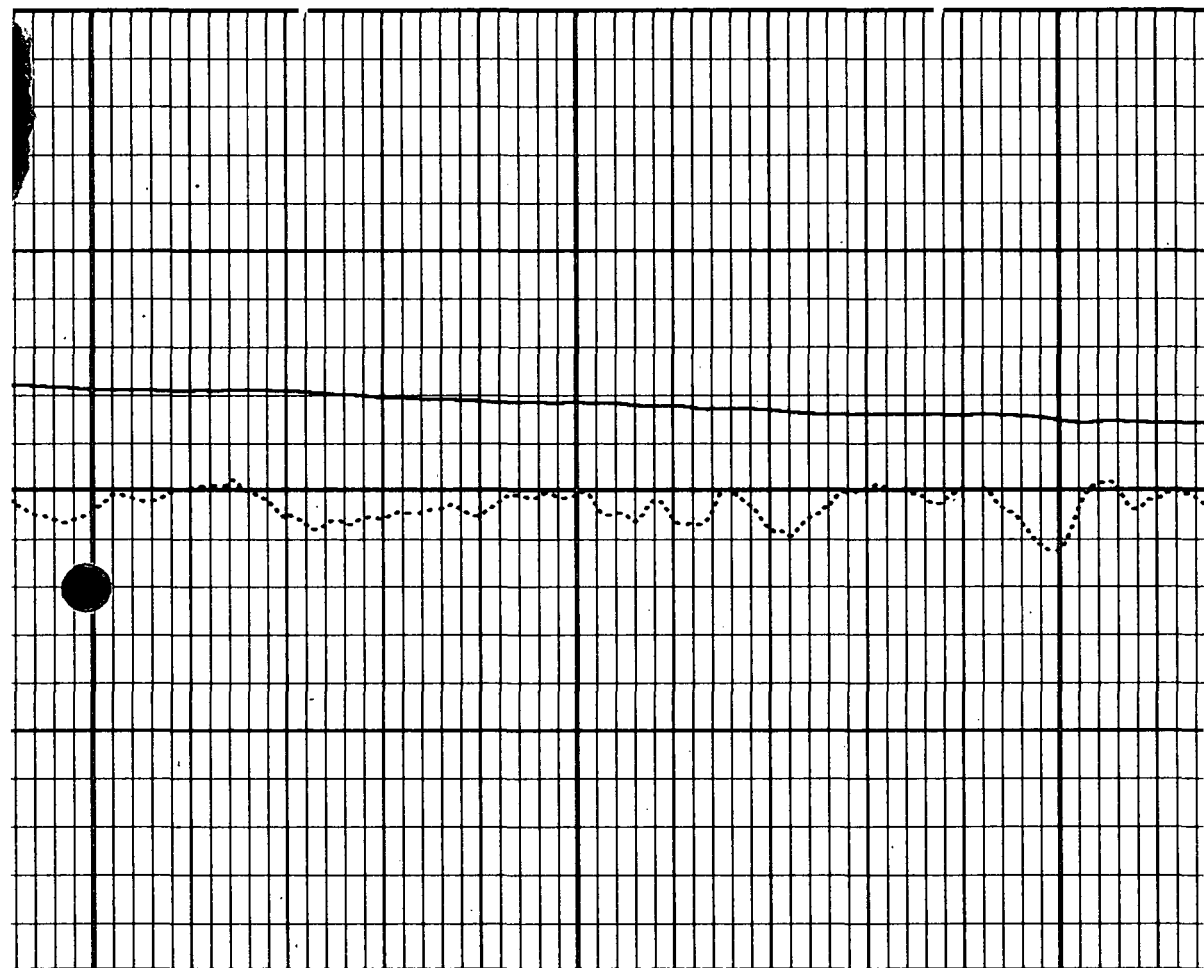
1700





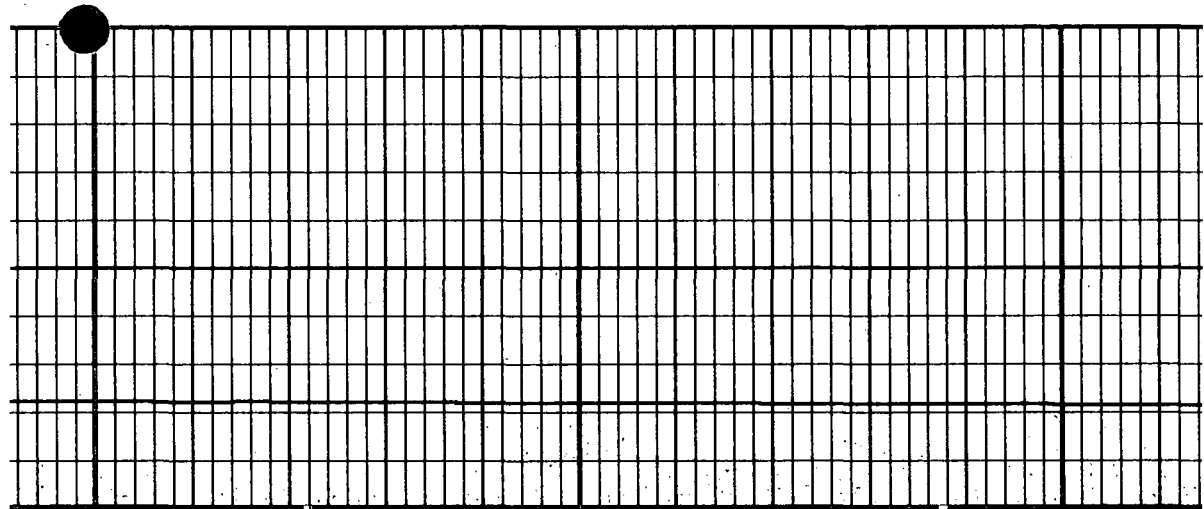
1800

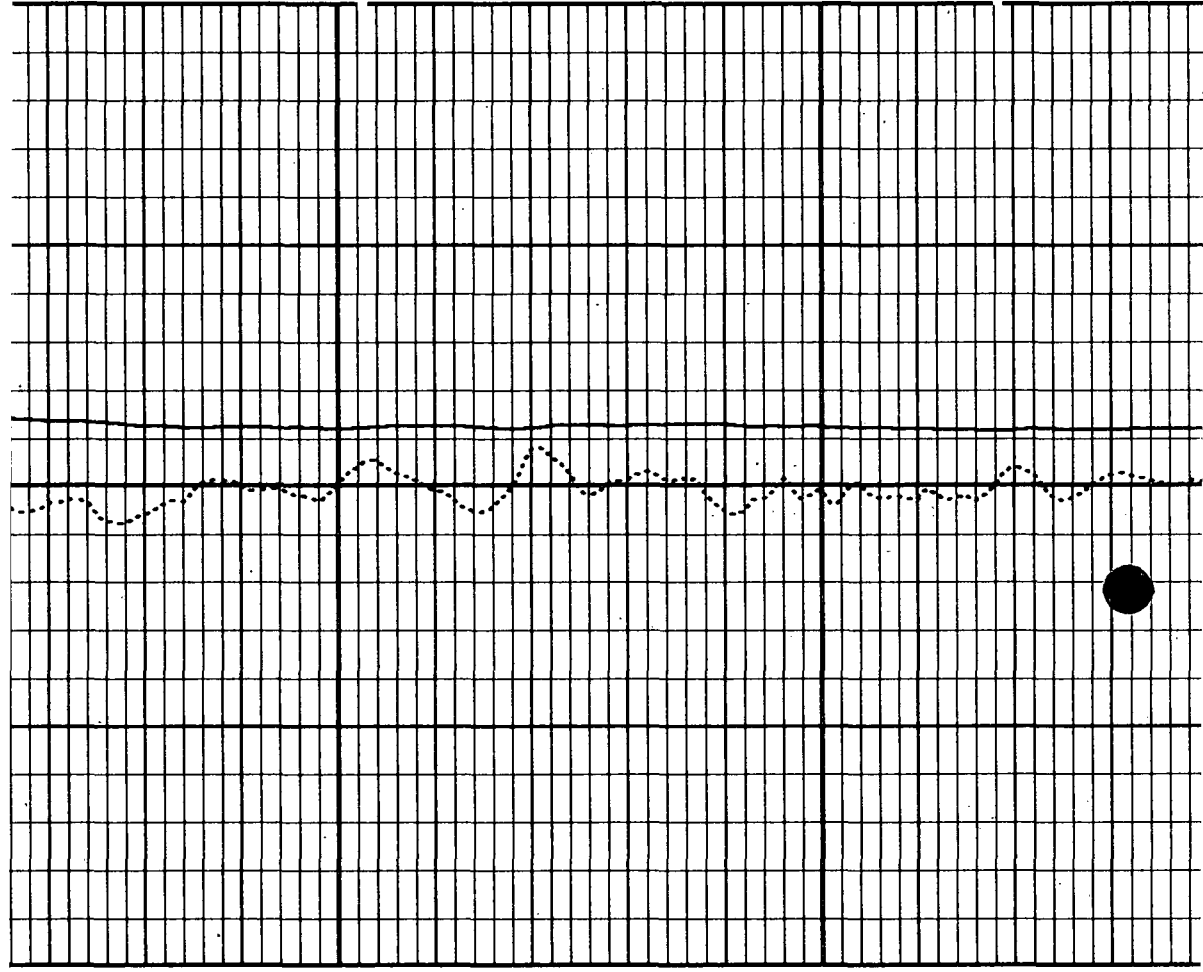




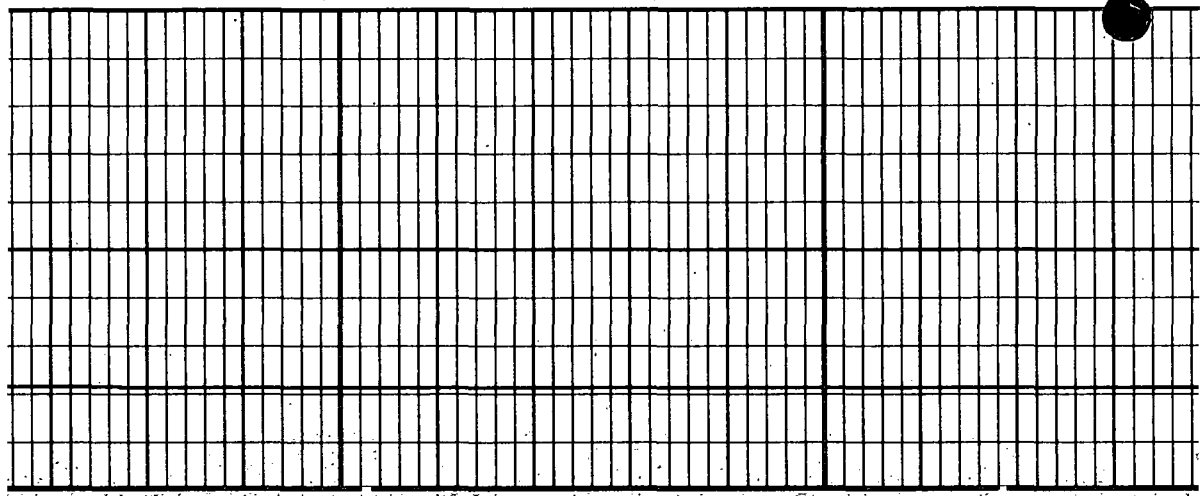
1900

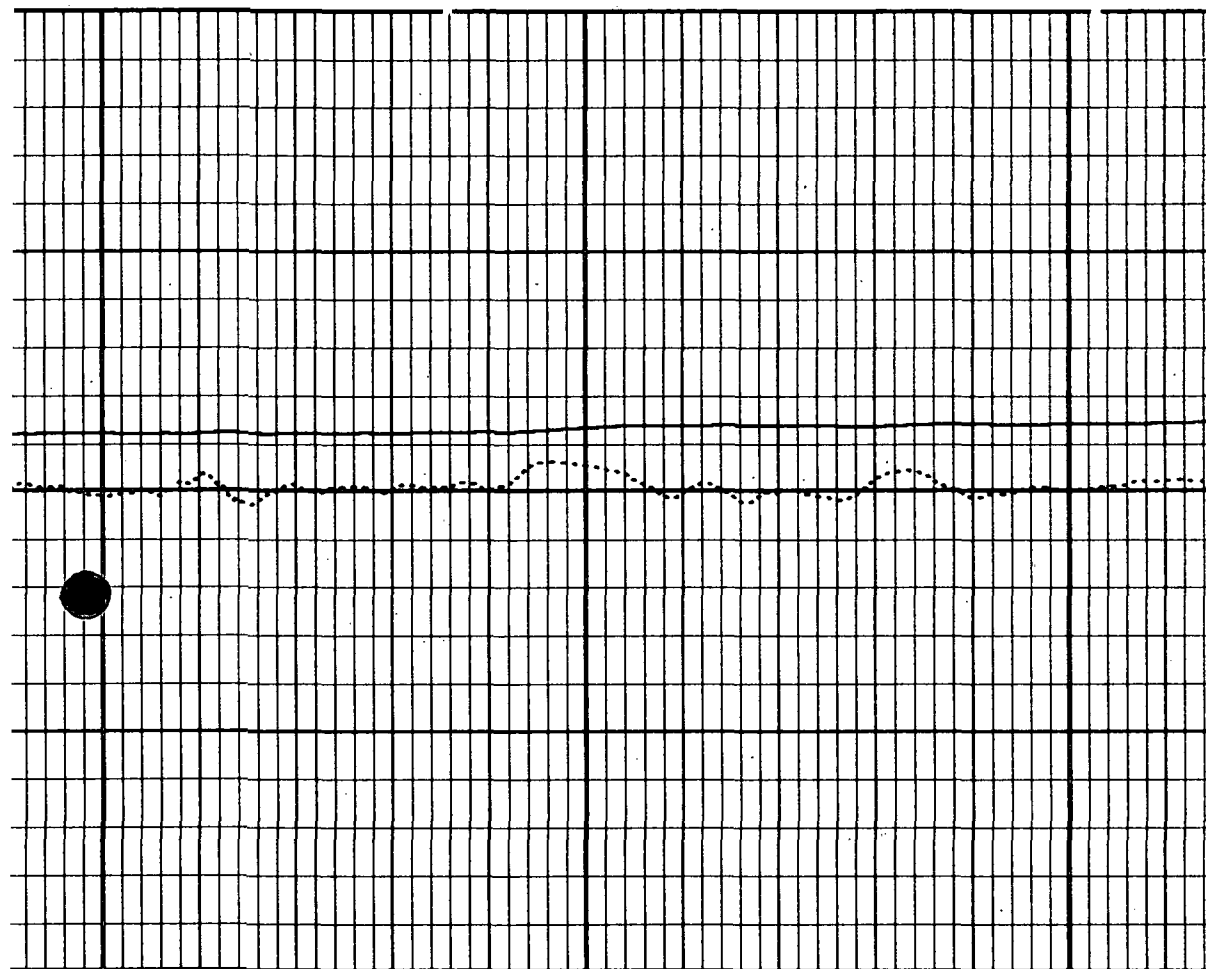
2000



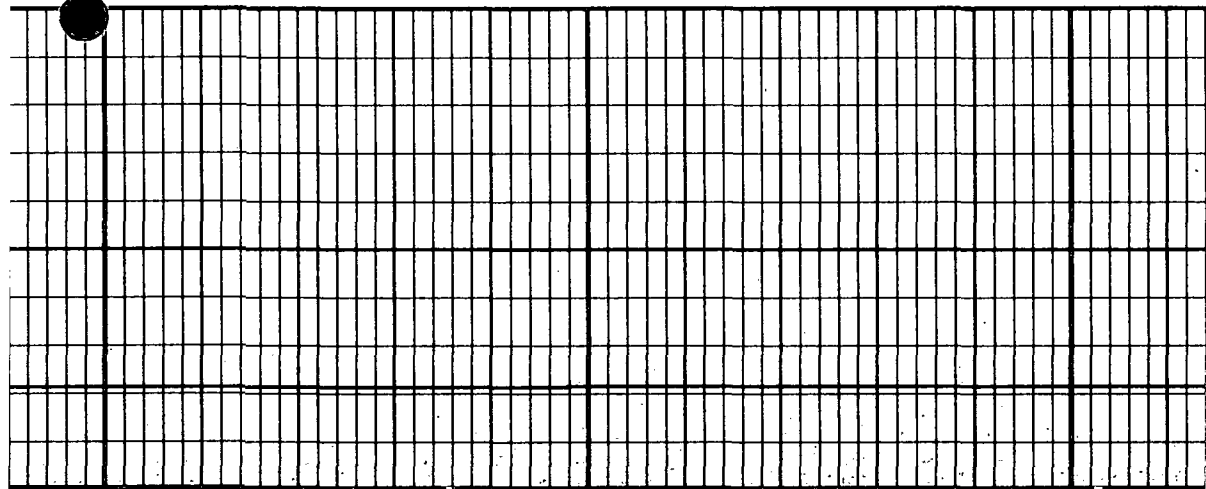


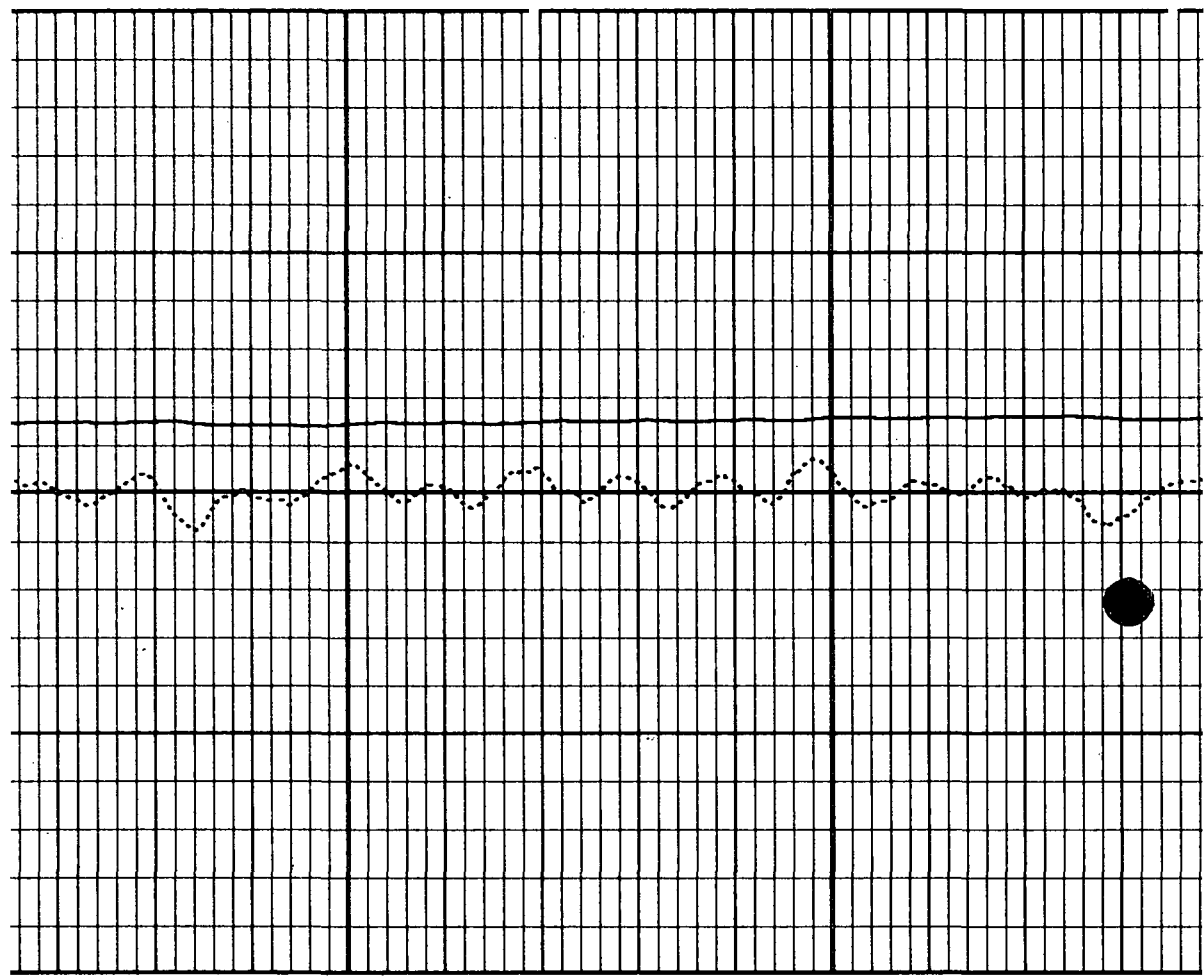
2100



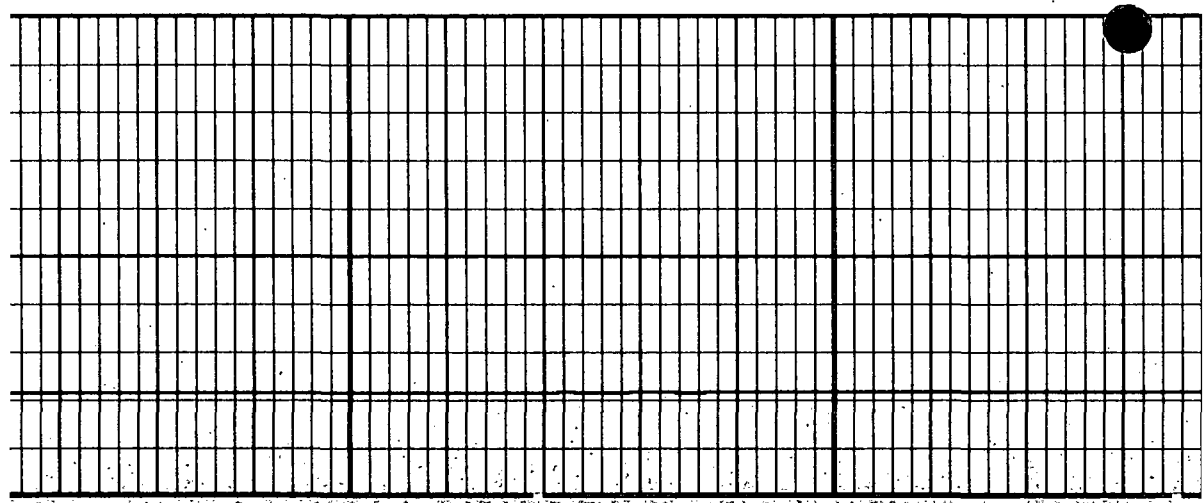


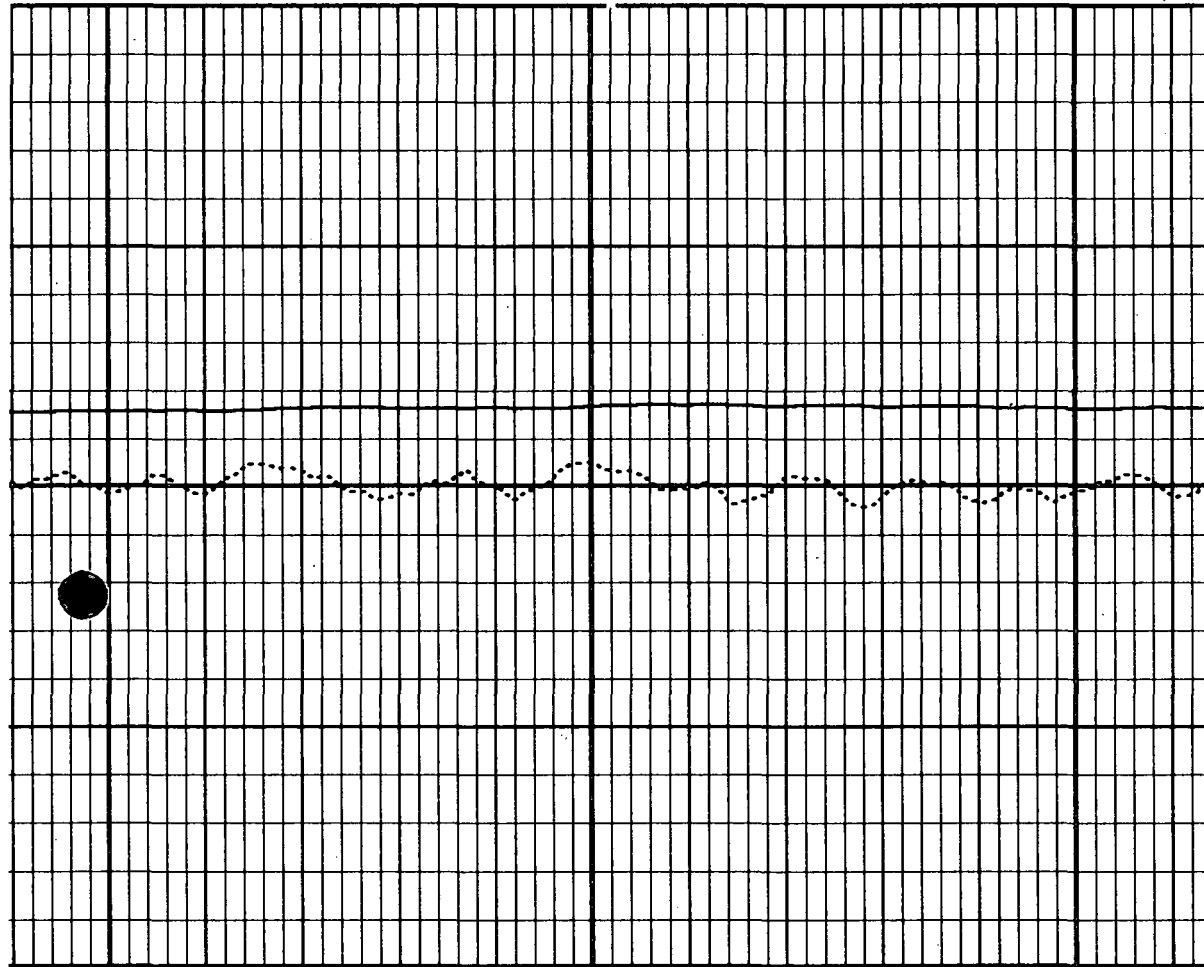
2200





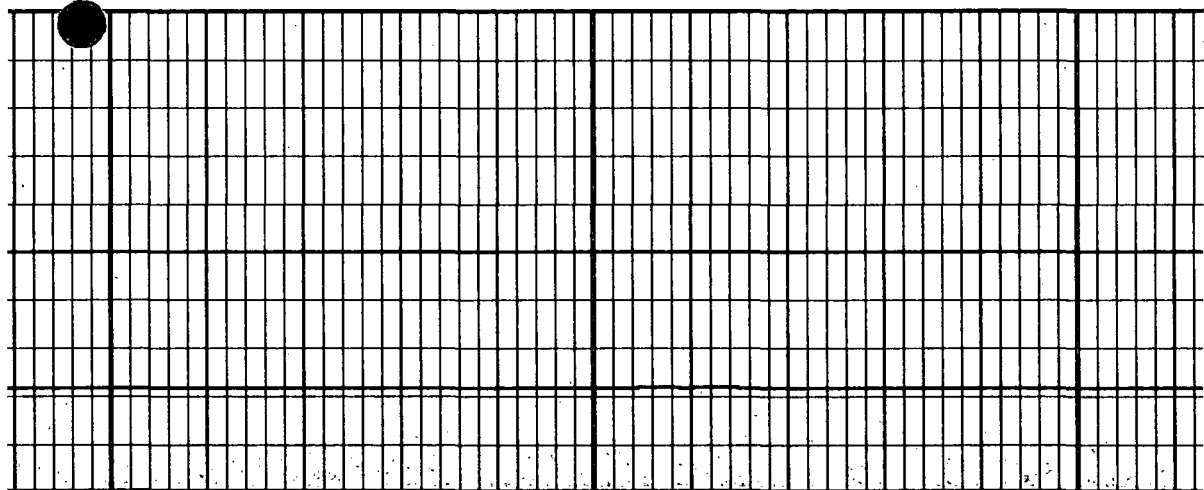
2300

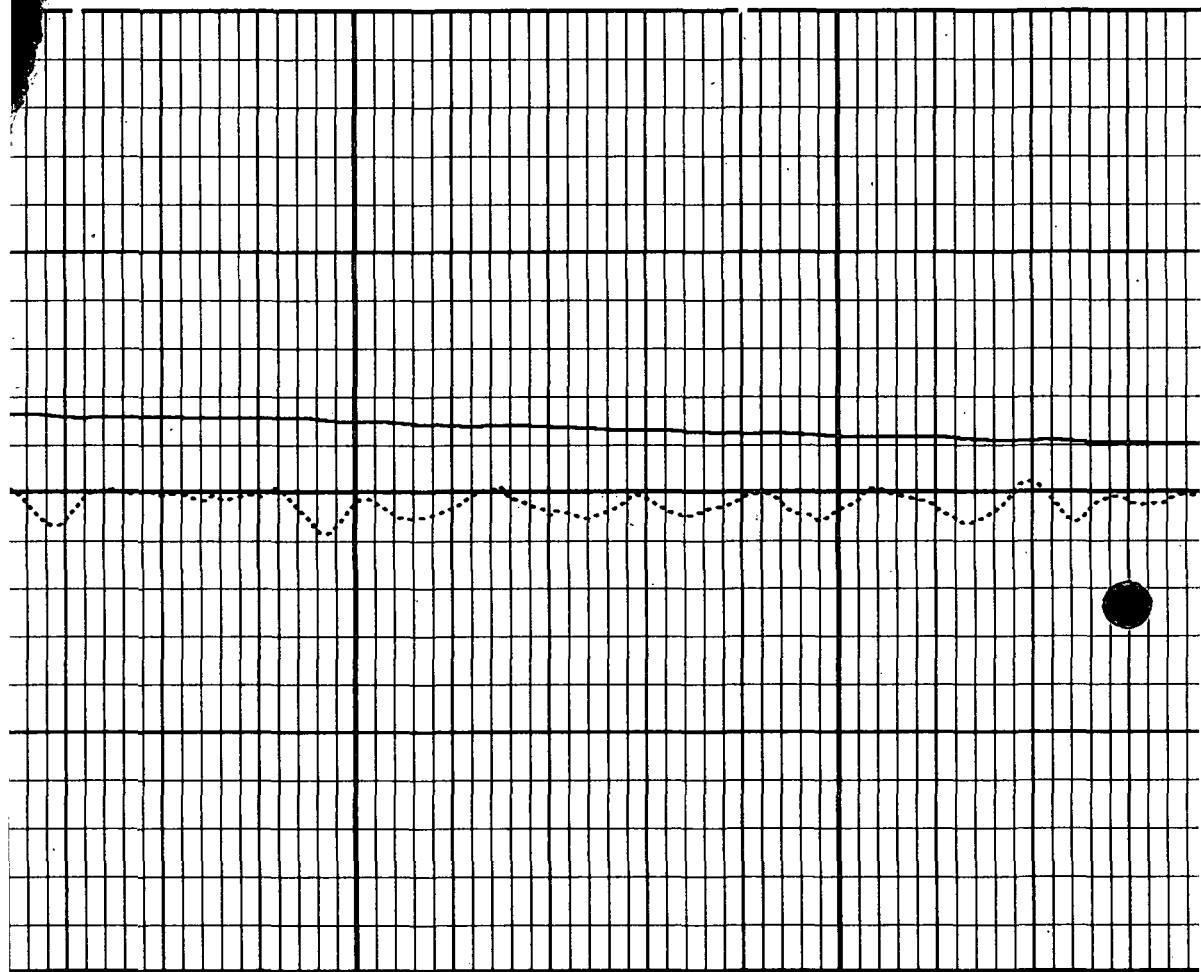




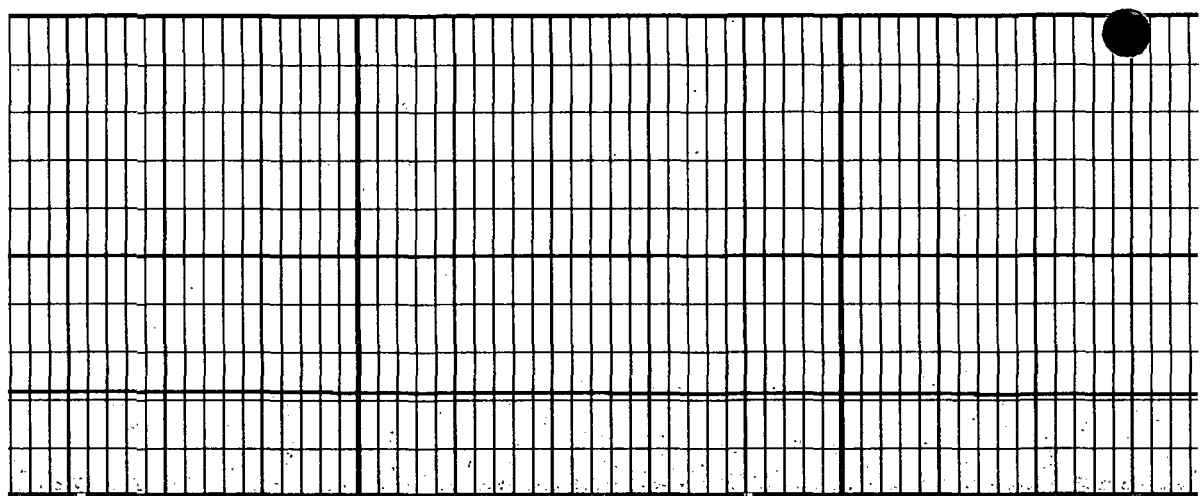
2400

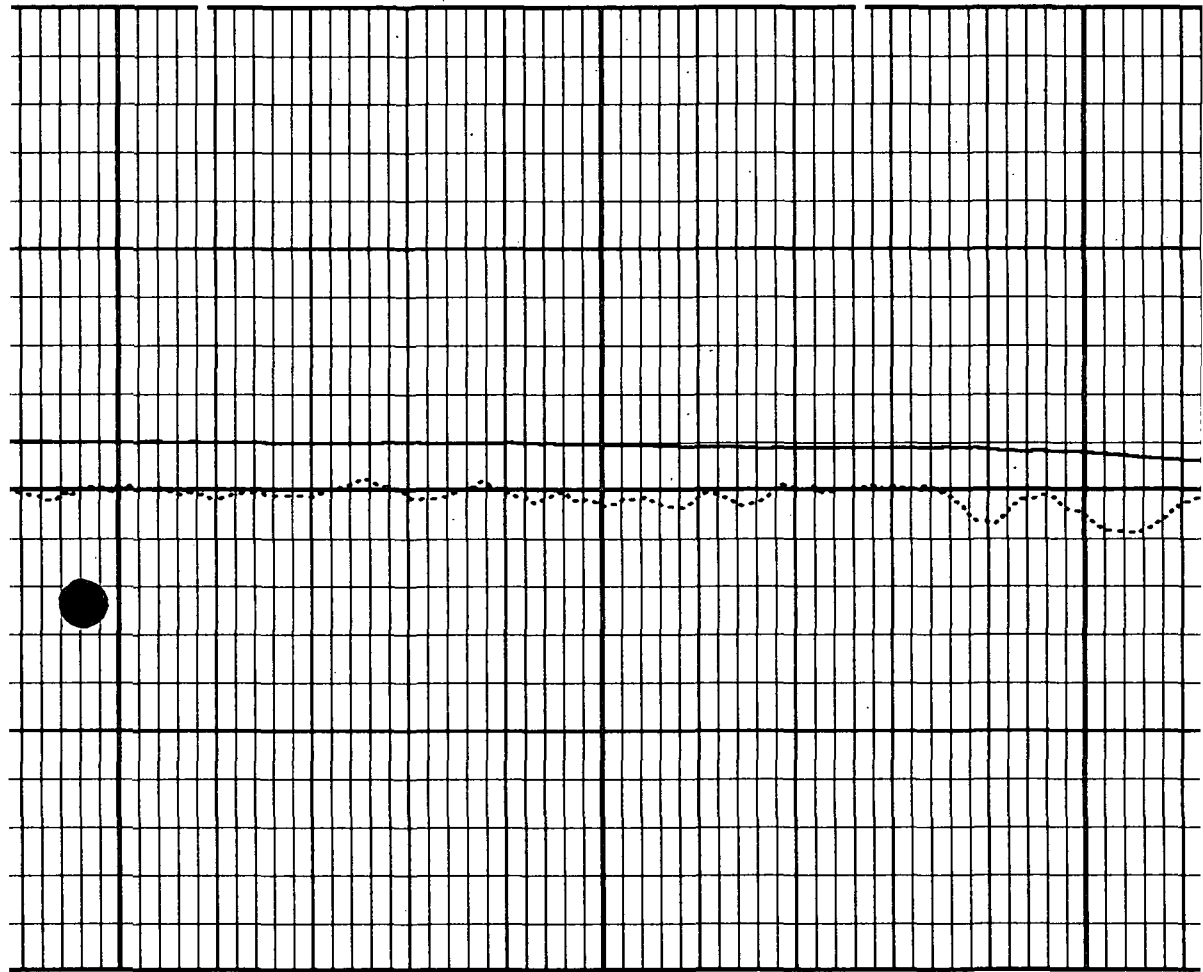
2500



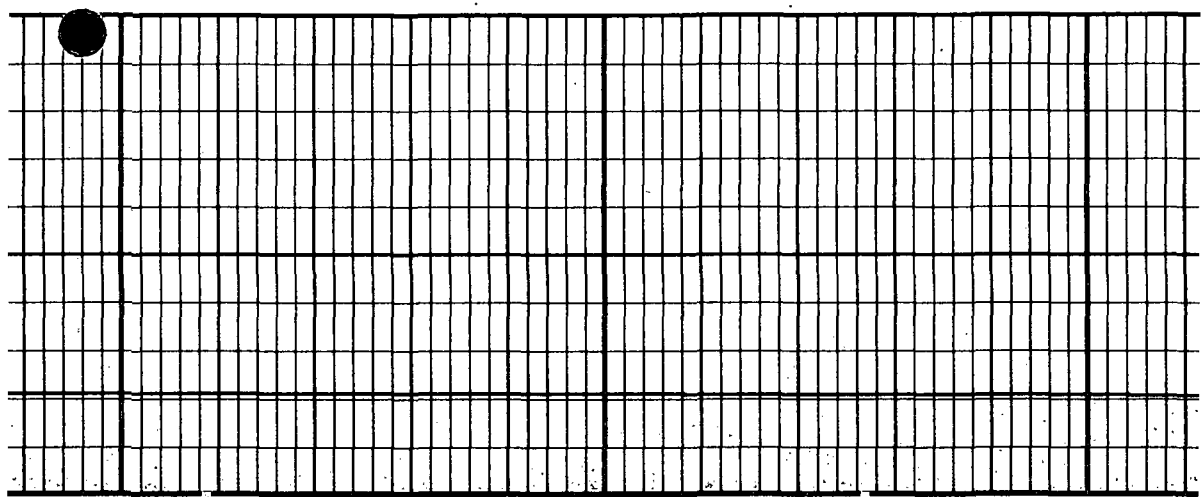


2600





2700

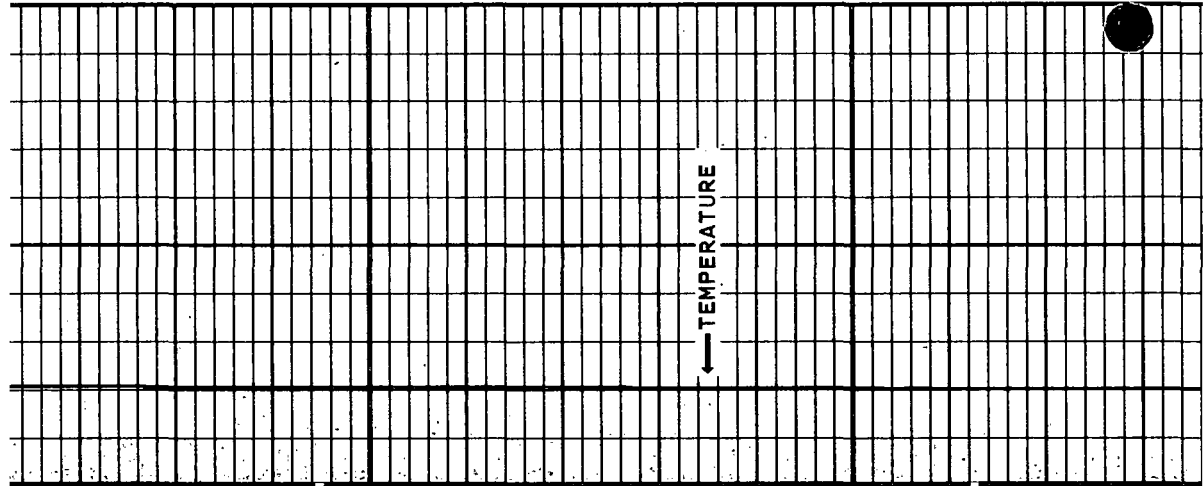
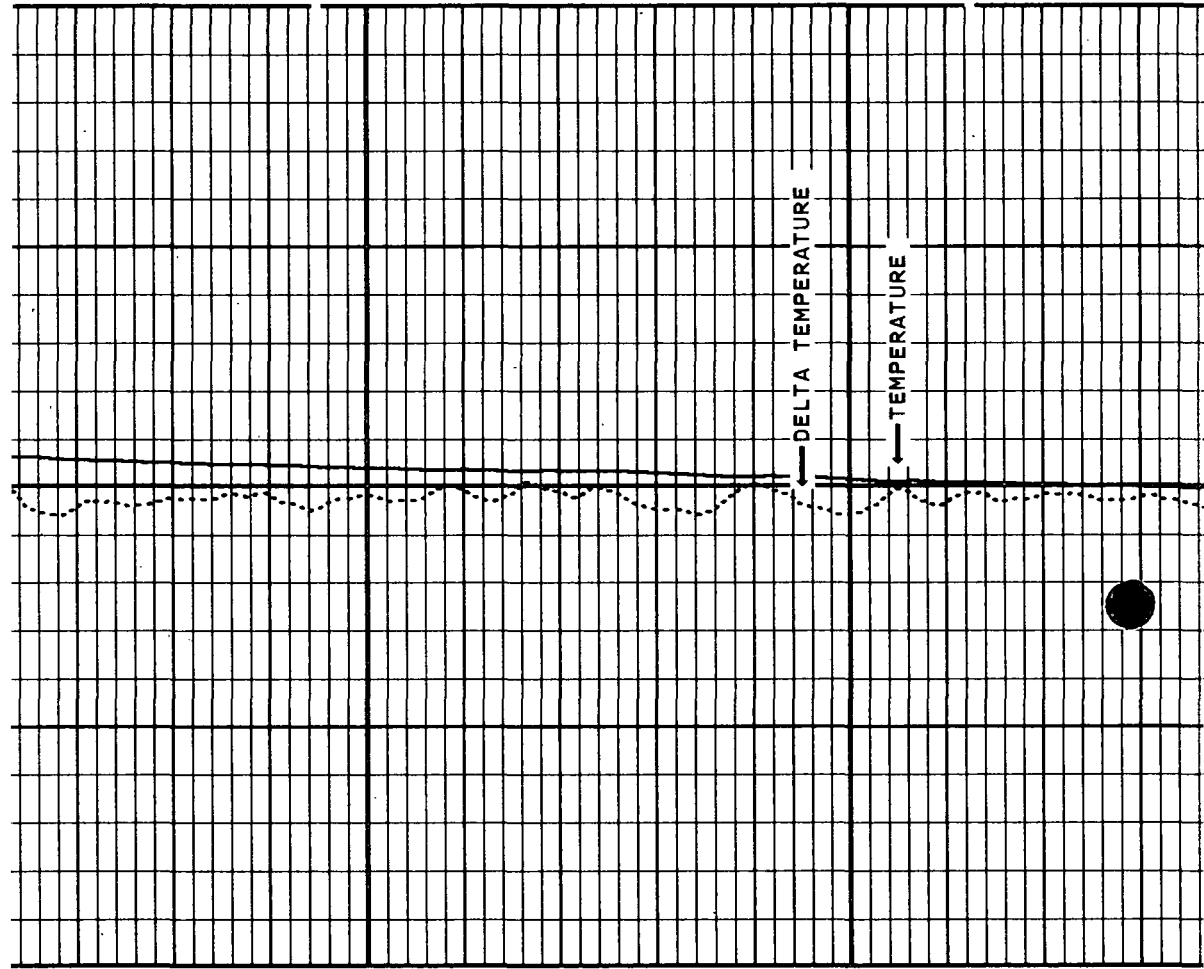


2800

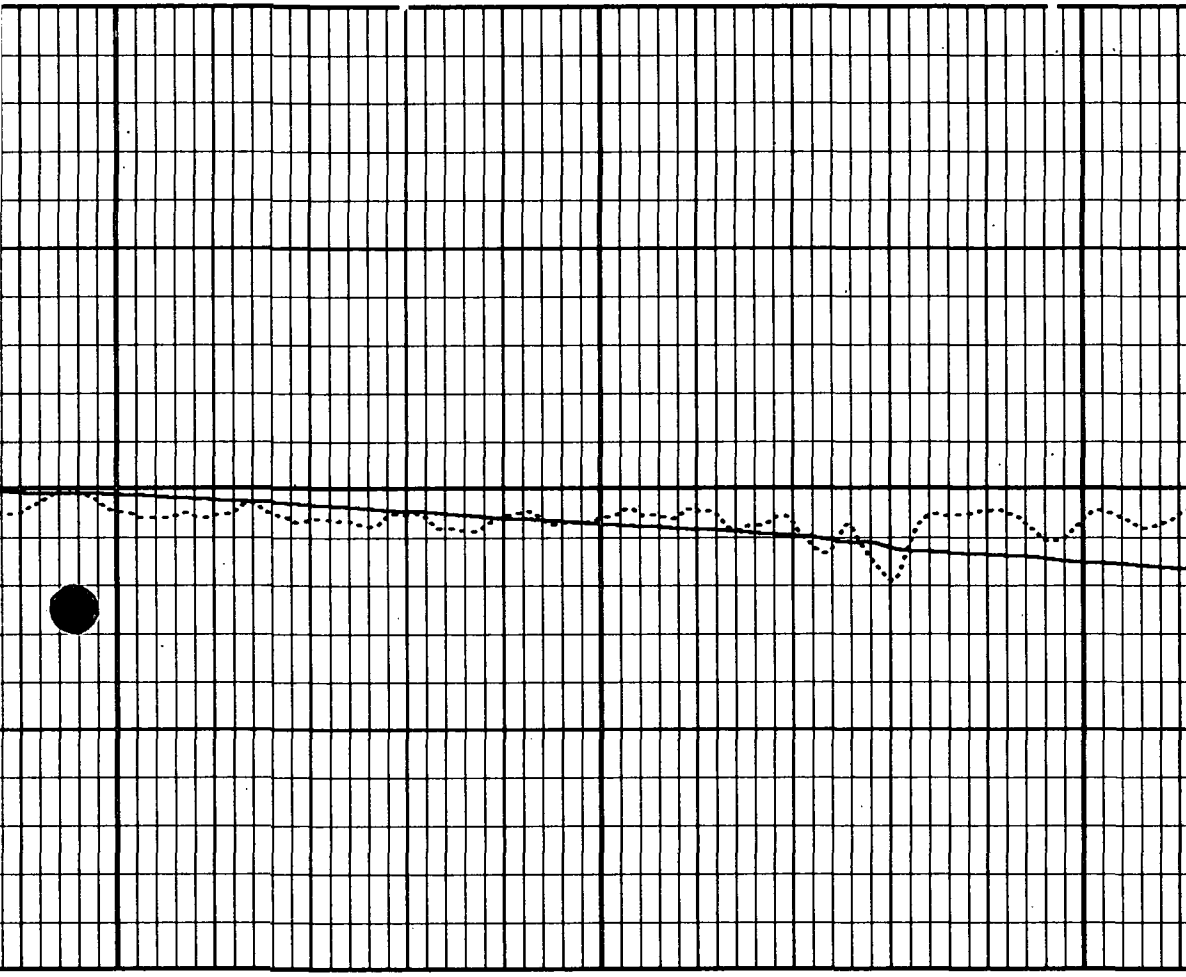
← TEMPERATURE

← DELTA TEMPERATURE

← TEMPERATURE

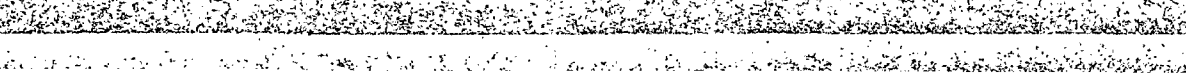
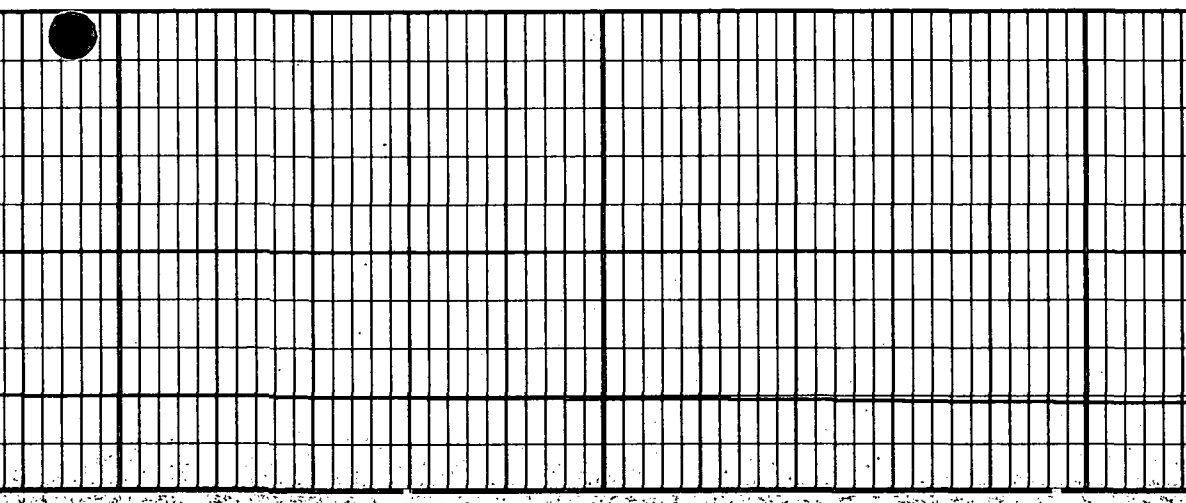


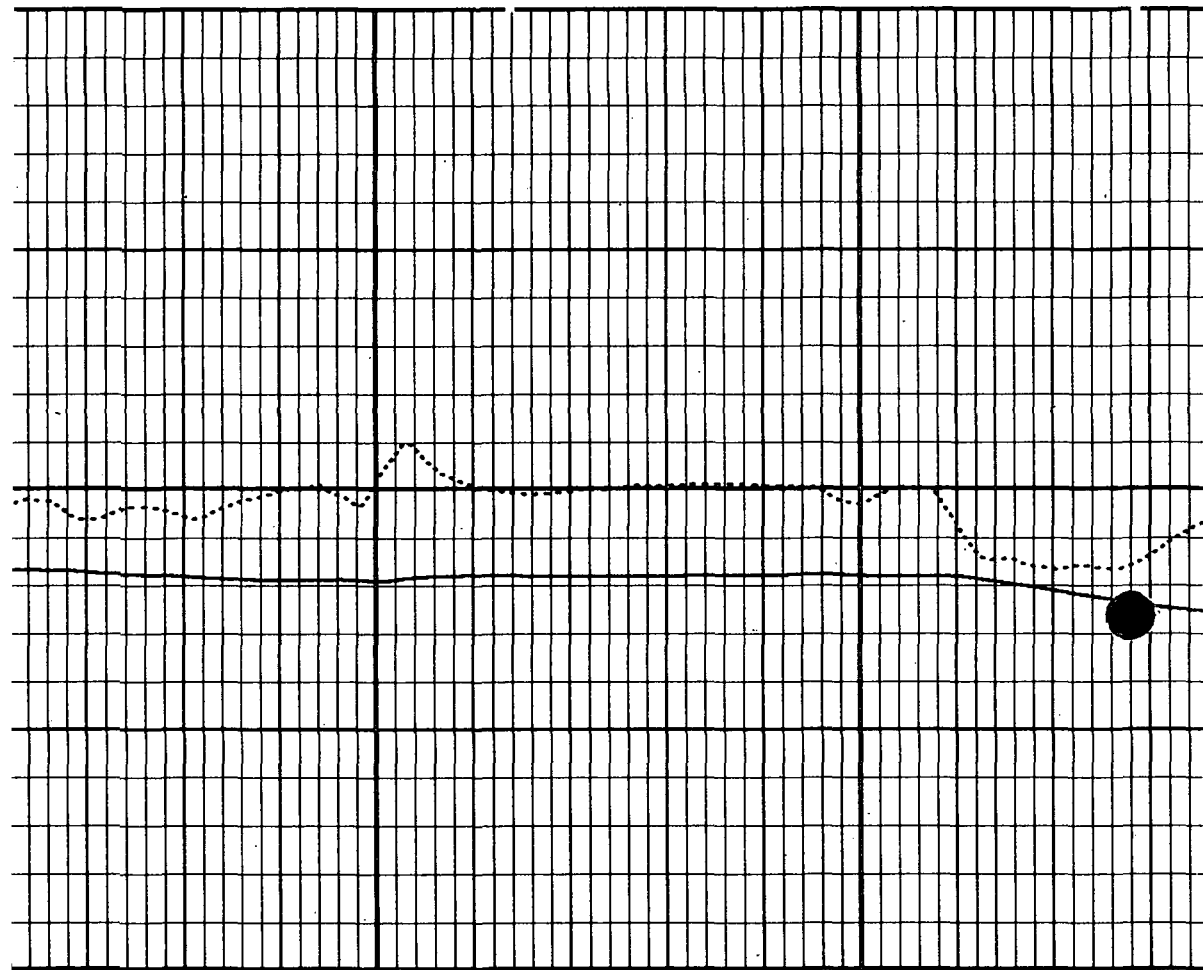
1



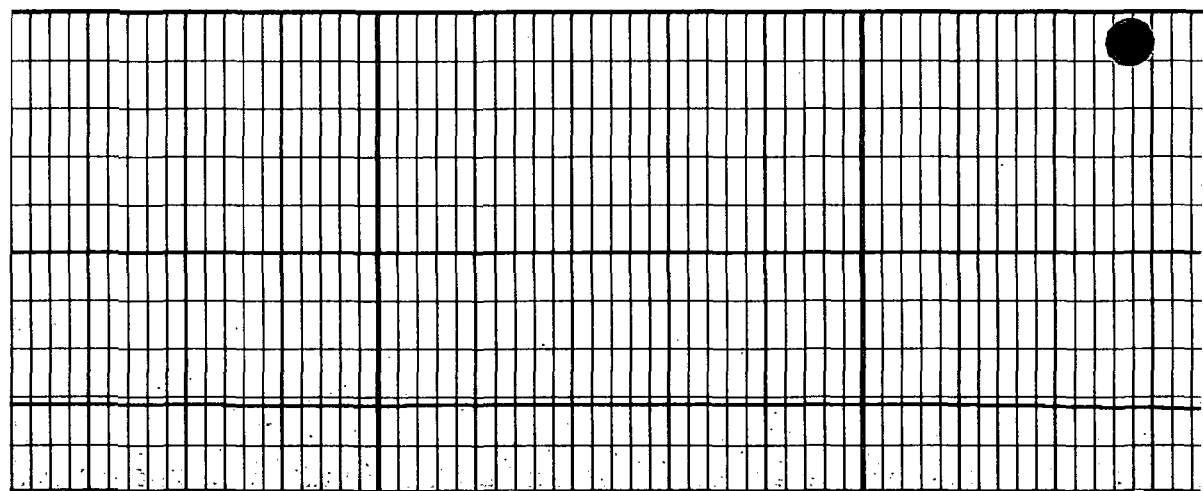
2900

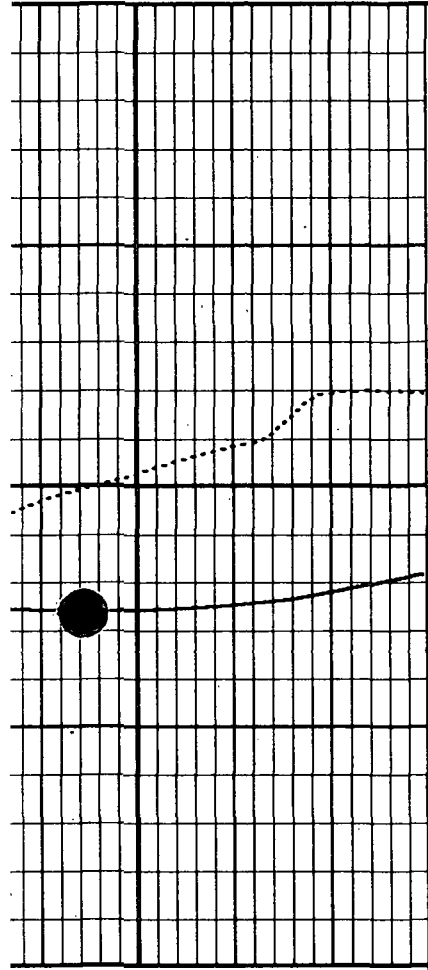
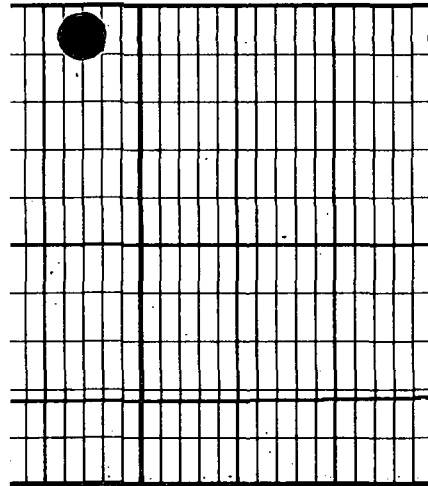
3000





3100





MC: TEMPERATURE
DEGREES

TEMPERATURE
DEGREES

DELTA TEMPERATURE

-1.0

1.0

START DEPTH: 2.0 FEET

DIRECTION: DOWN

DATE: 12/29/94

TIME: 09:27:42

MODE: TRACE PLAYBACK

PCIWI1TEMP1

VERSION: 2.16

REMARKS

BASE PASS
DATA OBTAINED GOING DOWN

FILE:

DATE: 12/29/94

TIME: 18:40

VERSION: 2.16

TEMPERATURE TOOL #T1

DATE: 10/27/94

TIME: 07:57

MEASURED	UNITS	STANDARD	MINIMUM	MAXIMUM	DEVIATION	UNITS
742.5	CPS	75.0	75.0	75.0	0.00	DEGF
1067.3	CPS	107.0	106.8	107.1	0.07	DEGF

ZERO PLUS

COMPANY

PORT CHARLOTTE EASTPORT WWT

WELL

IW-1

FIELD

PORT CHARLOTTE

STATE

FLORIDA

