

FLORIDA

GEOPHYSICAL LOGGING, INC.

HIGH RESOLUTION
TEMPERATURE
SURVEY

FILE NO. UC08-254545

COMPANY CHARLOTTE COUNTY UTILITIES

WELL EAST PORT WRF I.W. #2

FIELD EAST PORT

COUNTY CHARLOTTE STATE FLORIDA

LOCATION _____

LAT. 26 DEG. 58' 26" N

LONG. 82 DEG. 02' 17" W

SEC. 20 TWP. 40S RGE. 23E

OTHER SERVICES:
XCALIPER
BHC
DIL

PERMANENT DATUM PAD LEVEL (P.L.) ELEV. _____

LOG MEASURED FROM P.L. FT. ABOVE PERMANENT DATUM

DRILLING MEASURED FROM P.L. ELEV.: K.B.

DATE 29-NOV.-95 D.F. _____

RUN NO. FOUR G.L. _____

TYPE LOG HRT

DEPTH-DRILLER 1654'

DEPTH-LOGGER 1654'

LOGGED INTERVAL 1654' TO 380'

OPERATING RIG TIME 1.5 HOURS

TYPE FLUID IN HOLE WATER

SALINITY, PPM CL NA

DENSITY-VISCOSITY NA

LEVEL FULL

MAX. REC. TEMP, DEG F. 95 DEG. F.

EQUIPMENT-LOCATION 101 - FTM

RECORDED BY JONES/WILLIAMS

WITNESSED BY G. KENNEDY

BOREHOLE RECORD			CASING RECORD				
RUN NO.	BIT	FROM	TO	SIZE	WGT.	FROM	TO
ONE	48"	424'	SURFACE	38"	.5 WT.	393'	SURFACE
FOUR	12.25"	1654'	424'				

ALL INTERPRETATIONS ARE OPINIONS BASED ON INFERENCES FROM ELECTRICAL OR OTHER MEASUREMENTS AND WE CANNOT AND DO NOT GUARANTEE THE ACCURACY OR CORRECTNESS OF ANY INTERPRETATION, AND WE SHALL NOT, EXCEPT IN THE CASE OF GROSS OR WILLFULL NEGLIGENCE ON OUR PART, BE LIABLE OR RESPONSIBLE FOR ANY LOSS, COSTS, DAMAGES, OR EXPENSES INCURRED OR SUSTAINED BY ANYONE RESULTING FROM ANY INTERPRETATION MADE BY ANY OF OUR OFFICERS, AGENTS OR EMPLOYEES. THESE INTERPRETATIONS ARE ALSO SUBJECT TO OUR GENERAL TERMS AND CONDITIONS SET OUT IN OUR CURRENT PRICE SCHEDULE.


REMARKS

XY CALIPER/GAMMA RAY/TEMPERATURE TOOL STRING CONFIGURATION

-- GAMMA RAY -- 3 FT. LONG
MEASURE POINT 7.5 FT. FROM BOT

-- XY CALIPER -- 6 FT. LONG

-- LONG ARM MEASURE POINT 4 FT. FROM BOT



Entered into
OCULUS
South District

-- TOTAL TOOL STRING LENGTH = 11.5 FT.--

-- TEMPERATURE -- 2.5 FT. LONG
MEASURE POINT AT BOT

-- BOT

REMARKS

LOGGED GOING DOWN HOLE

VERSION: 2.26

MAIN PASS

EPIW24TEMP

FINISH DEPTH: 1673.0 FEET DIRECTION: DOWN DATE: 11/29/95 TIME: 10:13:35 MODE: TRACE PLAYBACK

DELTA TEMPERATURE

-1.0

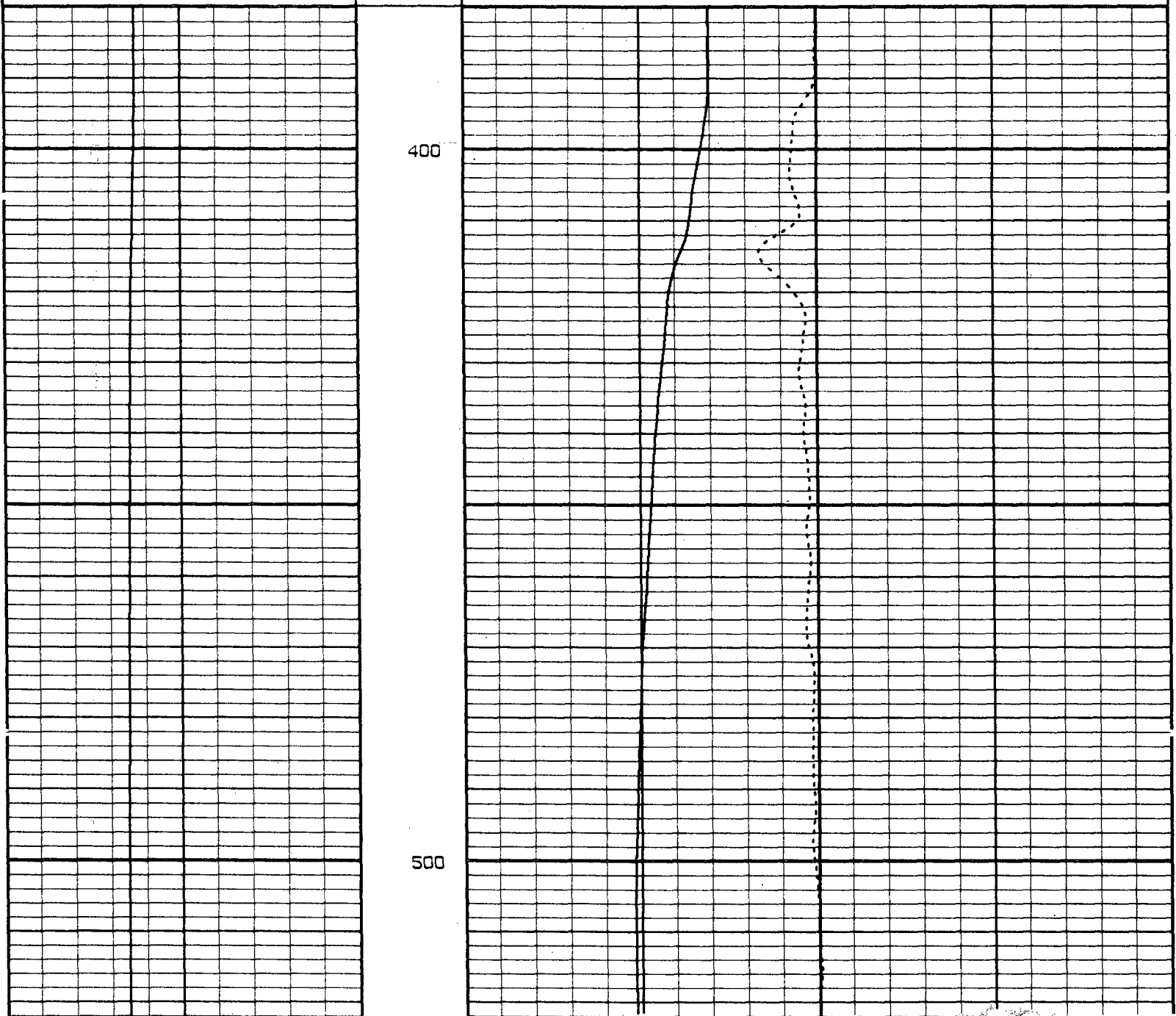
1.0

MC: TEMPERATURE

50 DEGREES 150

TEMPERATURE

80 DEGREES 100



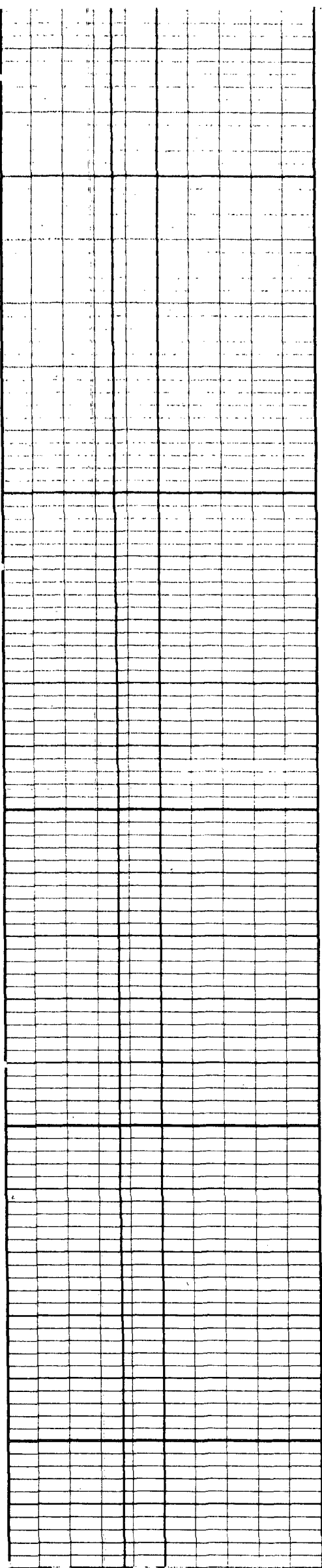
← TEMPERATURE

← TEMPERATURE

← DELTA TEMPERATURE

600

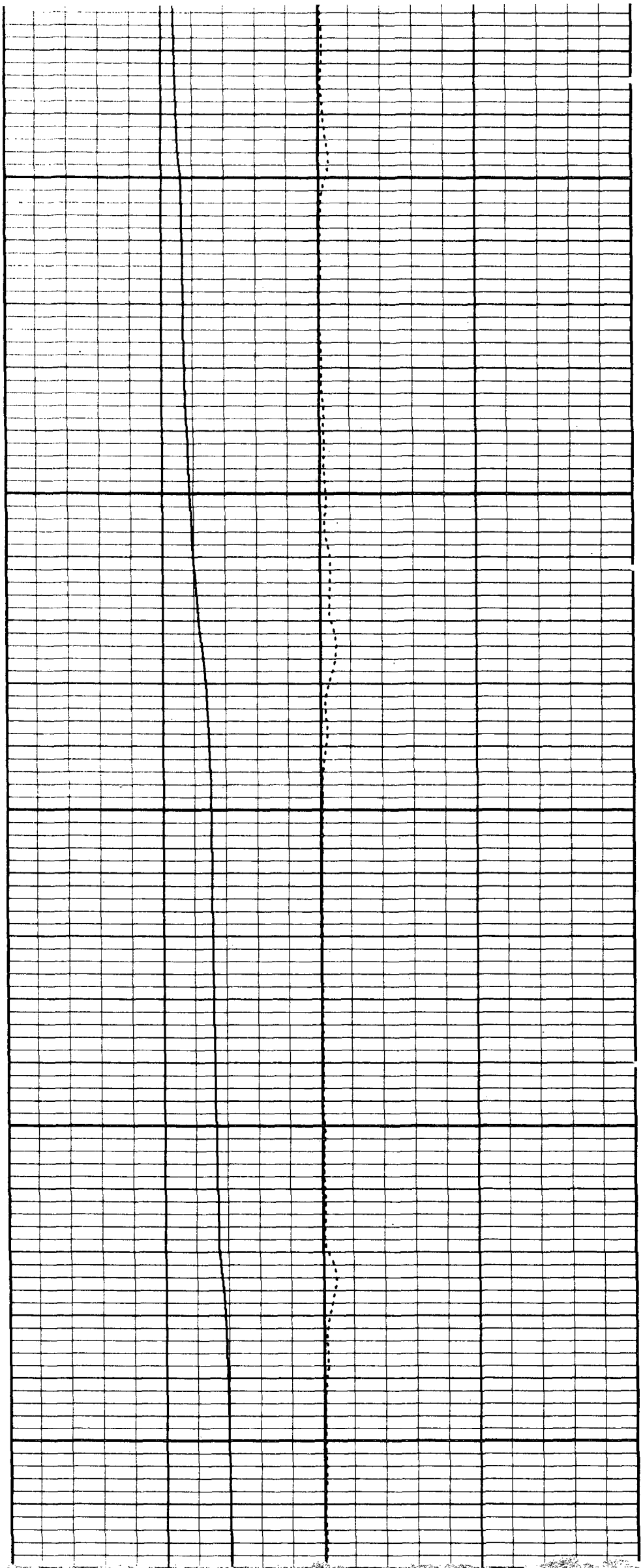
700

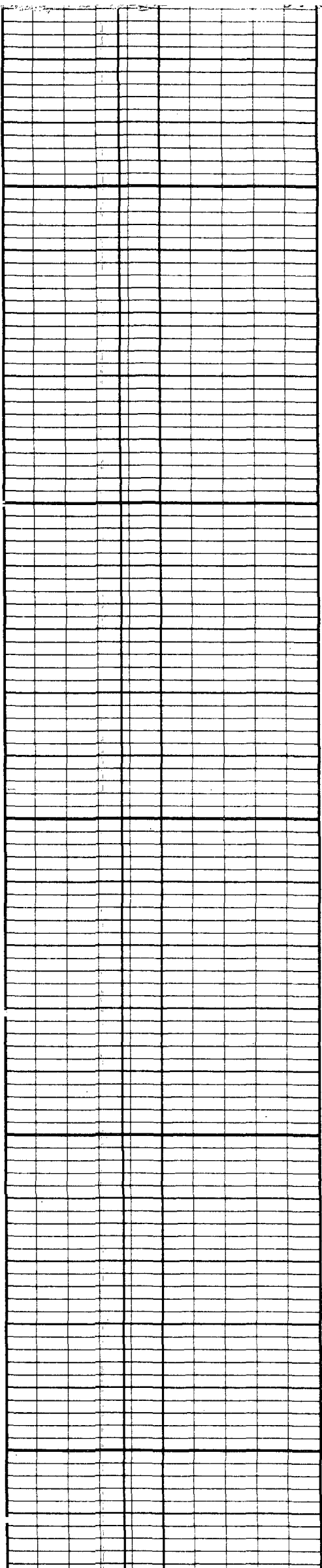


800

900

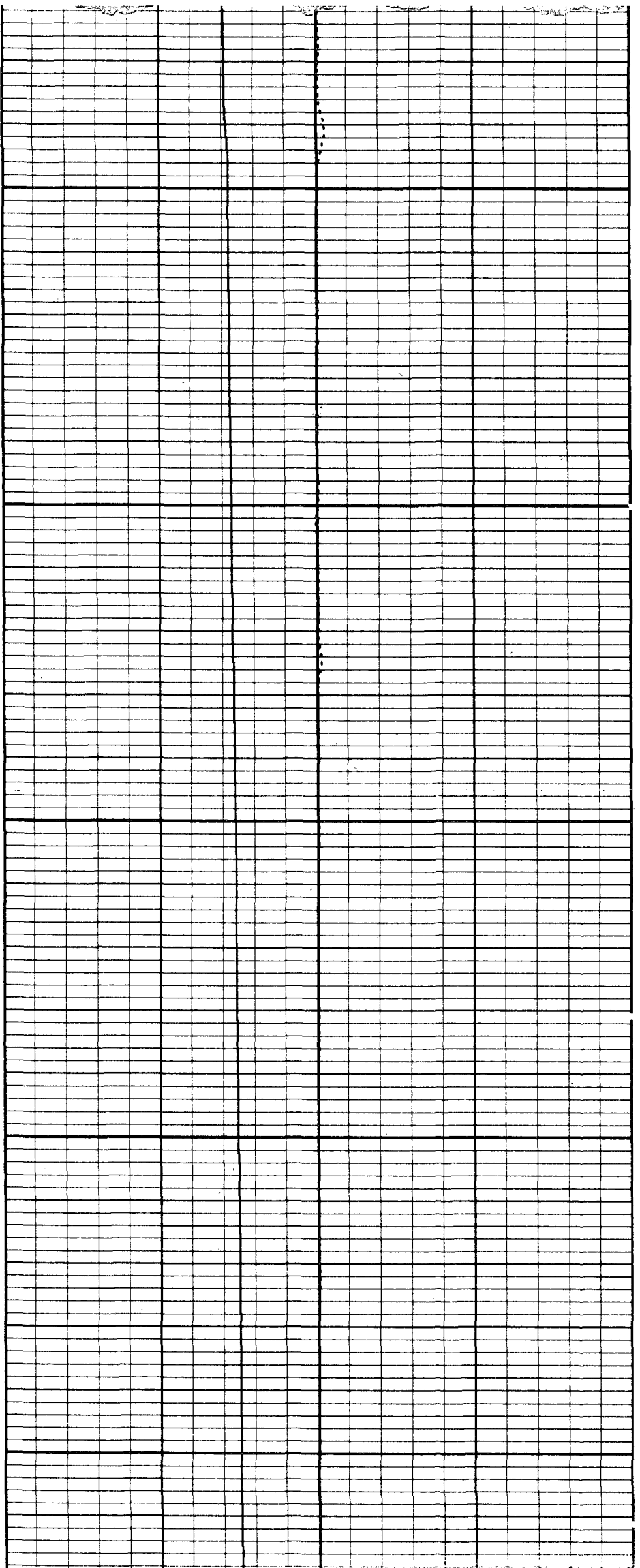
1000





1100

1200



1300

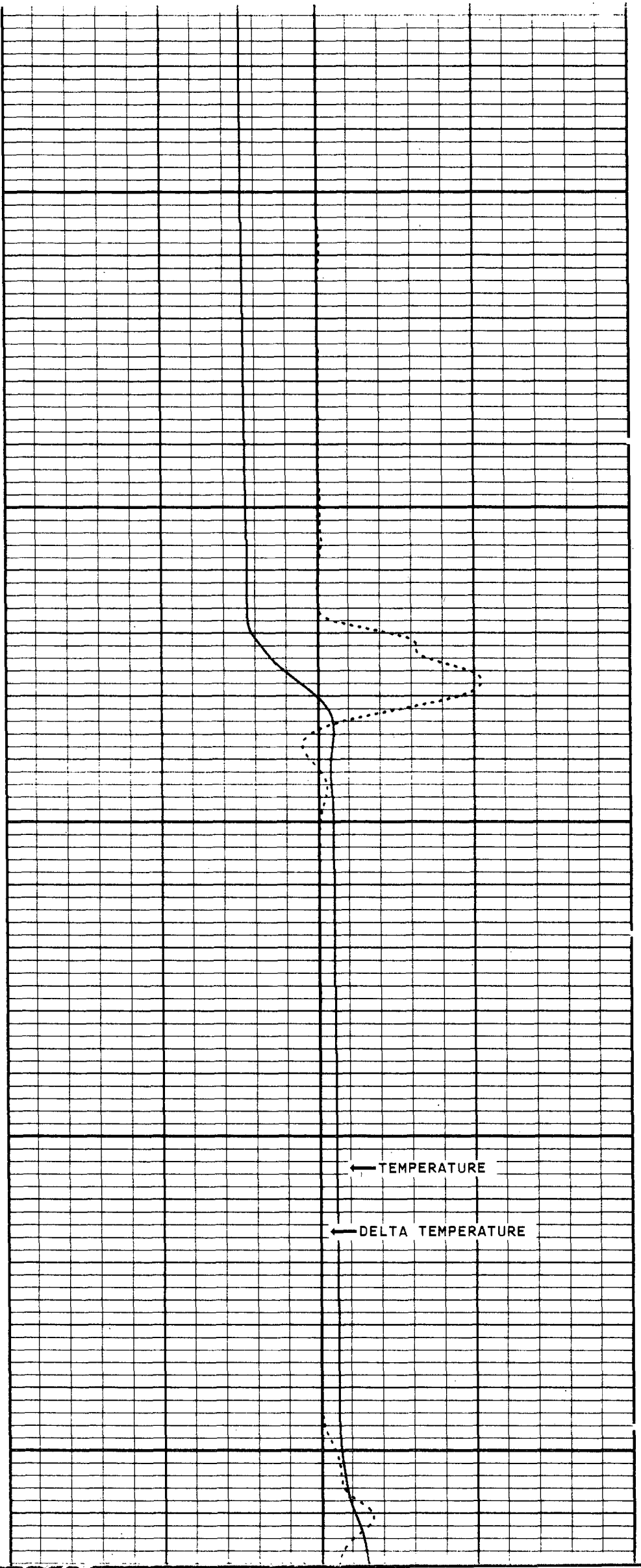
1400

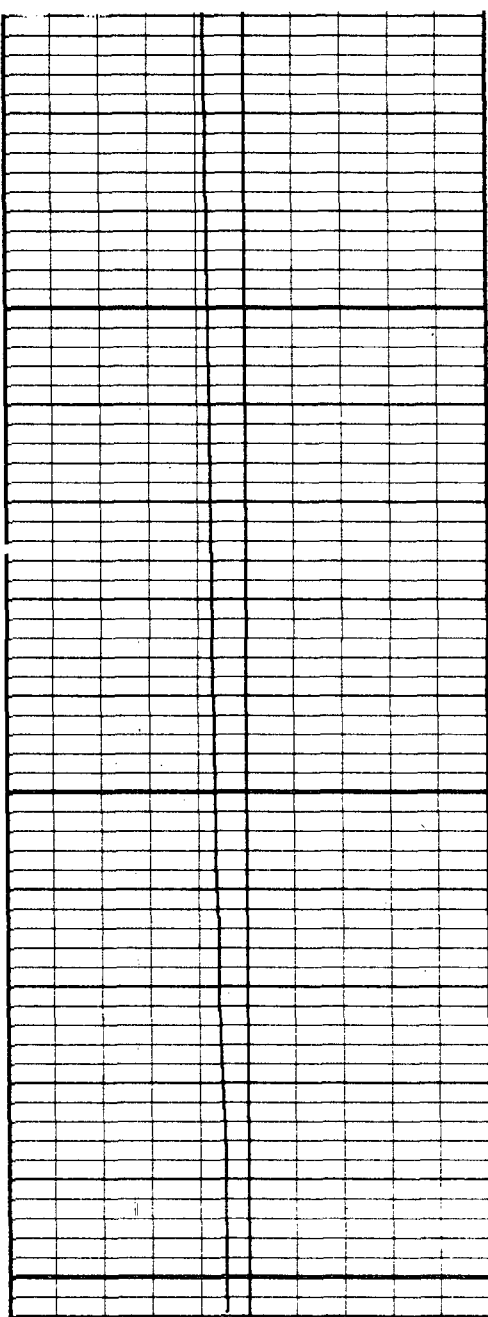
1500

← TEMPERATURE

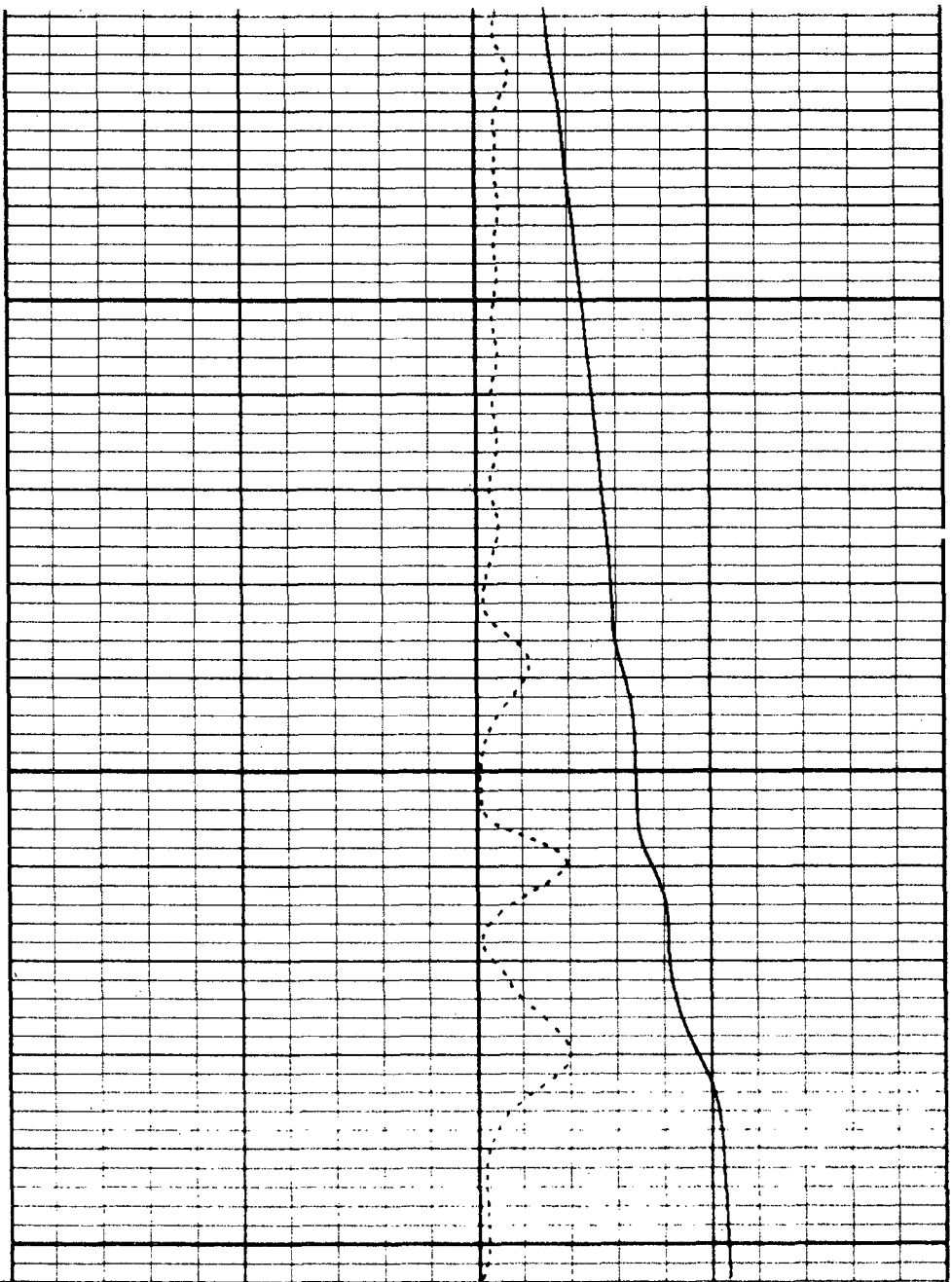
← TEMPERATURE

← DELTA TEMPERATURE





1600



MC: TEMPERATURE
50 DEGREES 150

TEMPERATURE
80 DEGREES 100
DELTA TEMPERATURE
-1.0 1.0

START DEPTH: 375.0 FEET DIRECTION: DOWN DATE: 11/29/95 TIME: 09:55:47 MODE: TRACE PLAYBACK

EPIW24TEMP

MAIN PASS

VERSION: 2.26

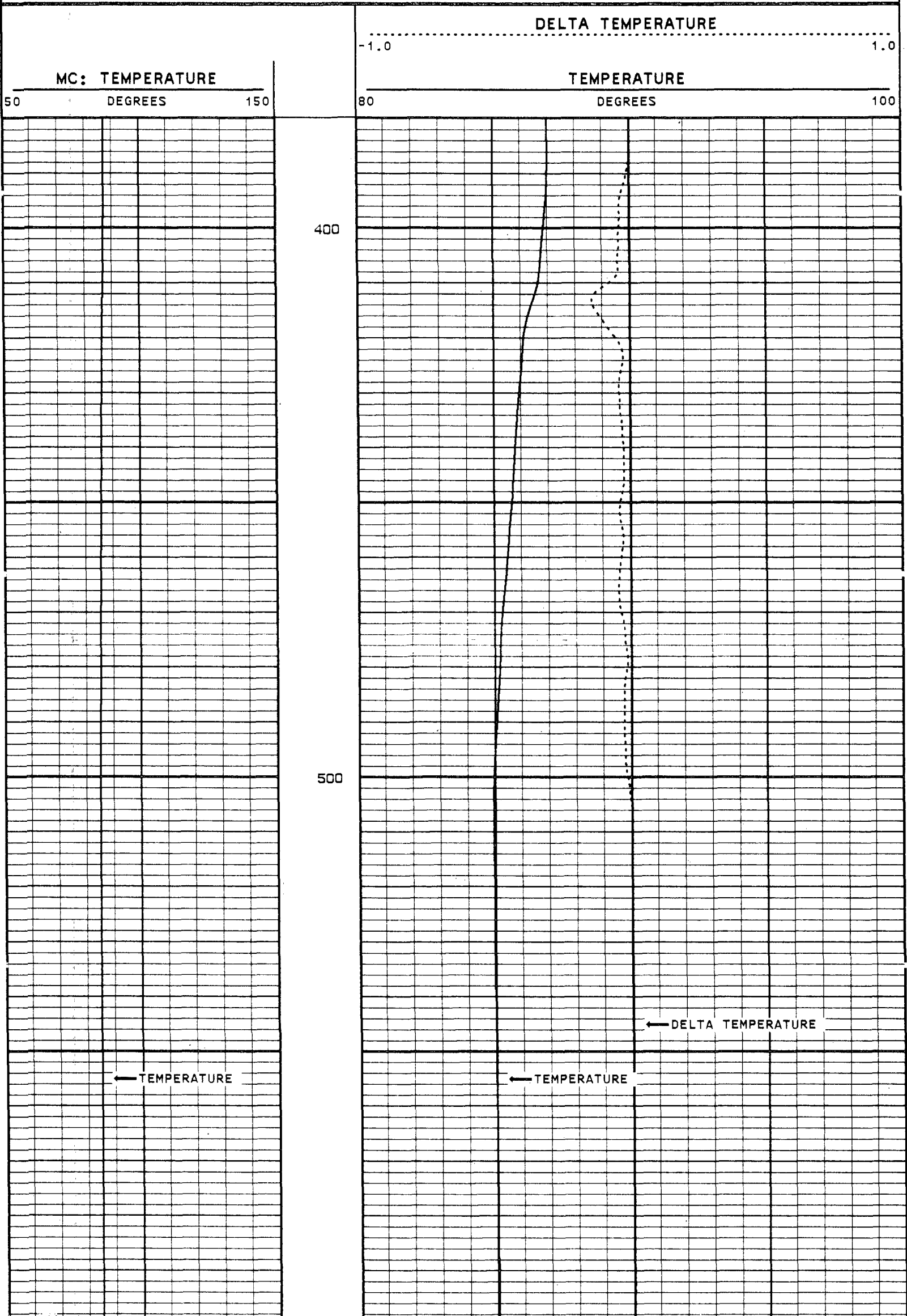
REMARKS

LOGGED GOING DOWN HOLE

VERSION: 2.26

REPEAT PASS

EPIW24TEM1



MC: TEMPERATURE <hr/> 50 150 DEGREES	TEMPERATURE <hr/> 80 100 DEGREES DELTA TEMPERATURE <hr style="border-top: 1px dashed black;"/> -1.0 1.0
START DEPTH: 344.6 FEET DIRECTION: DOWN DATE: 11/29/95 TIME: 10:47:52 MODE: TRACE PLAYBACK EPIW24TEM1	
REPEAT PASS	
VERSION: 2.26	

MASTER CALIBRATION SUMMARY

FILE: DATE: 11/29/95 TIME: 15:42 VERSION: 2.26

TEMPERATURE #10

DATE: 10/25/95 TIME: 16:43

	MEASURED	UNITS	STANDARD	MINIMUM	MAXIMUM	DEVIATION	UNITS
ZERO	457.4	CPS	69.0	68.7	69.4	0.26	DEGF
PLUS	724.5	CPS	122.9	122.7	123.1	0.14	DEGF

COMPANY CHARLOTTE COUNTY UTILITIES

WELL EAST PORT WRF I.W. #2

FIELD EAST PORT STATE FLORIDA



RECEIVED
D.E.P.
97 OCT 27 PM 5:33
SOUTH DISTRICT