

# FLORIDA

GEOPHYSICAL LOGGING, INC.

FLUID  
RESISTIVITY  
TEMPERATURE  
LOG

FILE NO. UC08-254545

COMPANY CHARLOTTE COUNTY UTILITIES

WELL EAST PORT WRF I.W. #2

FIELD EAST PORT

COUNTY CHARLOTTE STATE FLORIDA

LOCATION  
LAT. 26 DEG. 58' 26" N  
LONG. 82 DEG. 02' 17" W

SEC. 20 TWP 40S RGE 23E

OTHER SERVICES:  
X-Y CALIPER  
GAMMA RAY  
DIL/LL3/SP  
BHC SONIC/VDL

PERMANENT DATUM PAD LEVEL (P.L.) ELEV. \_\_\_\_\_

LOG MEASURED FROM P.L. FT. ABOVE PERMANENT DATUM

D.R.I.L.L.I.N.G. MEASURED FROM P.L. ELEV.: K.B. \_\_\_\_\_

D.F. \_\_\_\_\_

G.L. \_\_\_\_\_

DATE 07-MARCH-1996

RUN NO. TEN

TYPE LOG FLUID RES/TEMP

DEPTH-DRILLER 2970'

DEPTH-LOGGER 2970'

LOGGED INTERVAL 2970' TO CASING TO \_\_\_\_\_

OPERATING RIG TIME 1 HOURS

TYPE FLUID IN HOLE WATER

SALINITY, PPM CL N/A

DENSITY-VISCOSITY N/A

LEVEL FULL

MAX. REC. TEMP, DEG F. 95 DEGF.

EQUIPMENT-LOCATION 102 - MIAMI

RECORDED BY LEE/JONES

WITNESSED BY L.ULLMAN

RUN NO.	BOREHOLE RECORD			CASING RECORD			
	BIT	FROM	TO	SIZE	MGT.	FROM	TO
NINE	12 1/4"	2803'	SURFACE	38"	.5" MT.	393'	SURFACE
	8 7/8"	2815'	2803'	30"	5" MT.	1638'	SURFACE
TEN	12.25"	2970'	CASING				

ALL INTERPRETATIONS ARE OPINIONS BASED ON INFERENCES FROM ELECTRICAL OR OTHER MEASUREMENTS AND WE CANNOT AND DO NOT GUARANTEE THE ACCURACY OR CORRECTNESS OF ANY INTERPRETATION, AND WE SHALL NOT, EXCEPT IN THE CASE OF GROSS OR WILLFULL NEGLIGENCE ON OUR PART, BE LIABLE OR RESPONSIBLE FOR ANY LOSS, COSTS, DAMAGES, OR EXPENSES INCURRED OR SUSTAINED BY ANYONE RESULTING FROM ANY INTERPRETATION MADE BY ANY OF OUR OFFICERS, AGENTS OR EMPLOYEES. THESE INTERPRETATIONS ARE ALSO SUBJECT TO OUR GENERAL TERMS AND CONDITIONS SET OUT IN OUR CURRENT PRICE SCHEDULE.

### REMARKS

FLUID RESISTIVITY/TEMPERATURE TOOL STRING CONFIGURATION



Entered into  
**OCULUS**  
South District

-- TOTAL TOOL STRING LENGTH = 7.5 FT. --

-- 1 11/16" WEIGHT -- 5 FT. LONG

-- FLUID RESISTIVITY/TEMPERATURE  
2.5 FT. LONG

REMARKS

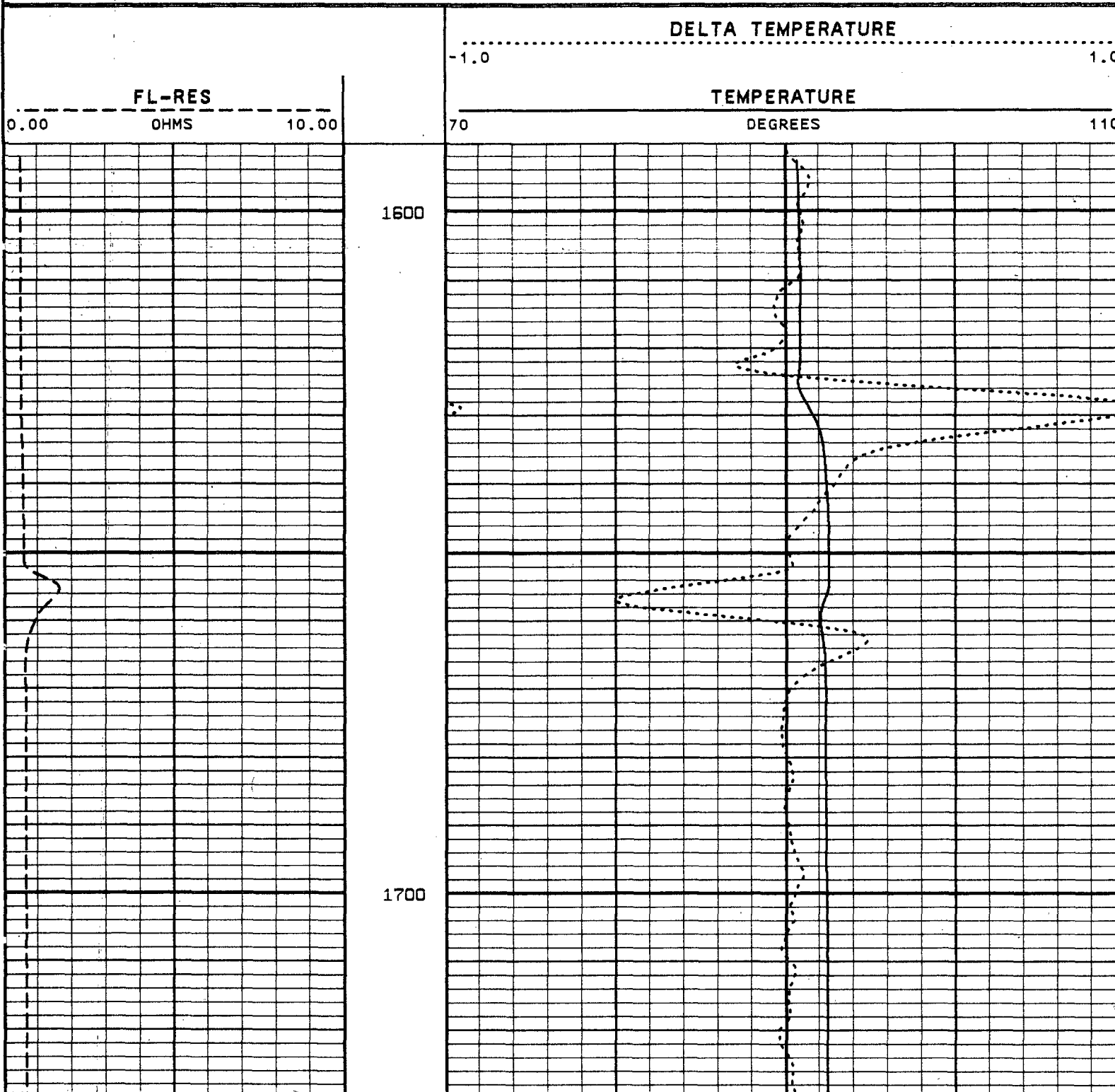
DATA INVALID FROM 1650' TO 1660'.  
DUE TO SPUDGING OF TOOL.

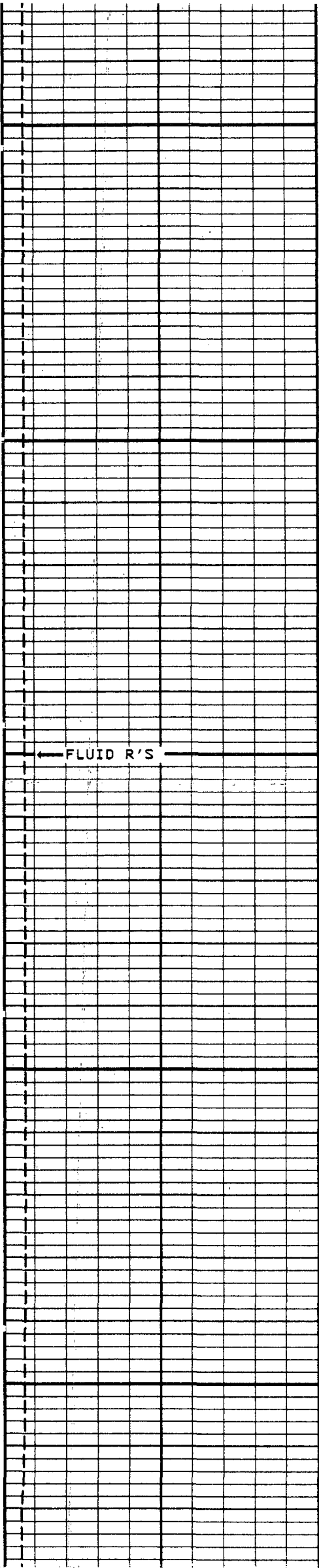
VERSION: 2.26

MAIN PASS

EPIW210FRM

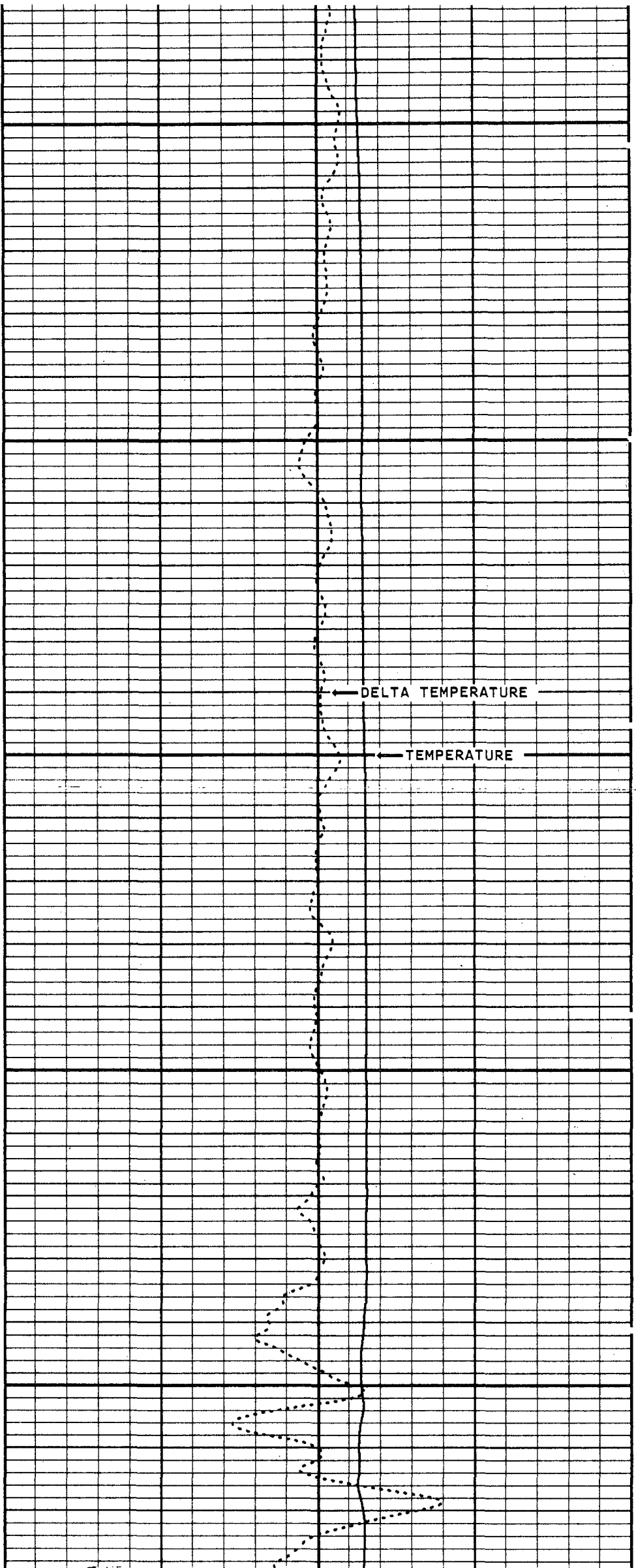
FINISH DEPTH: 2957.8 FEET DIRECTION: DOWN DATE: 03/06/96 TIME: 11:15:26 MODE: TRACE PLAYBACK

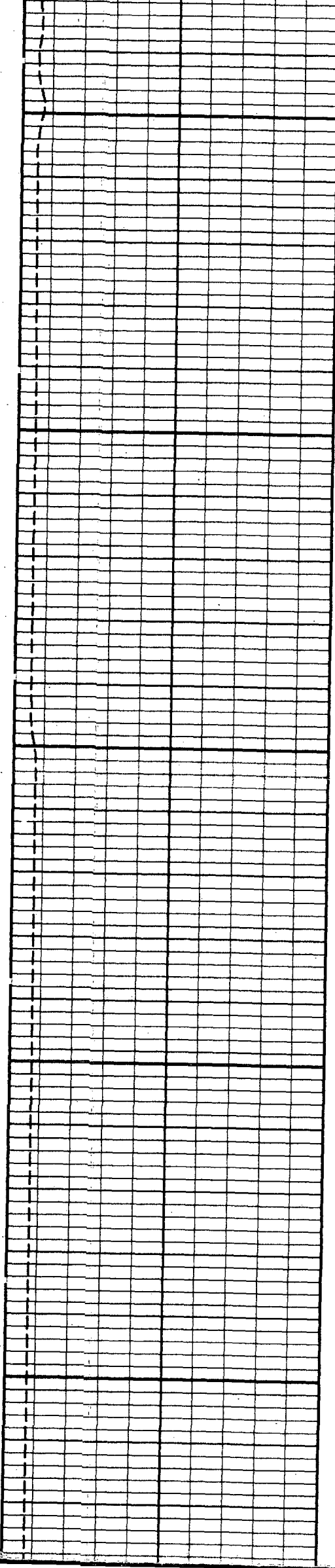




1800

1900

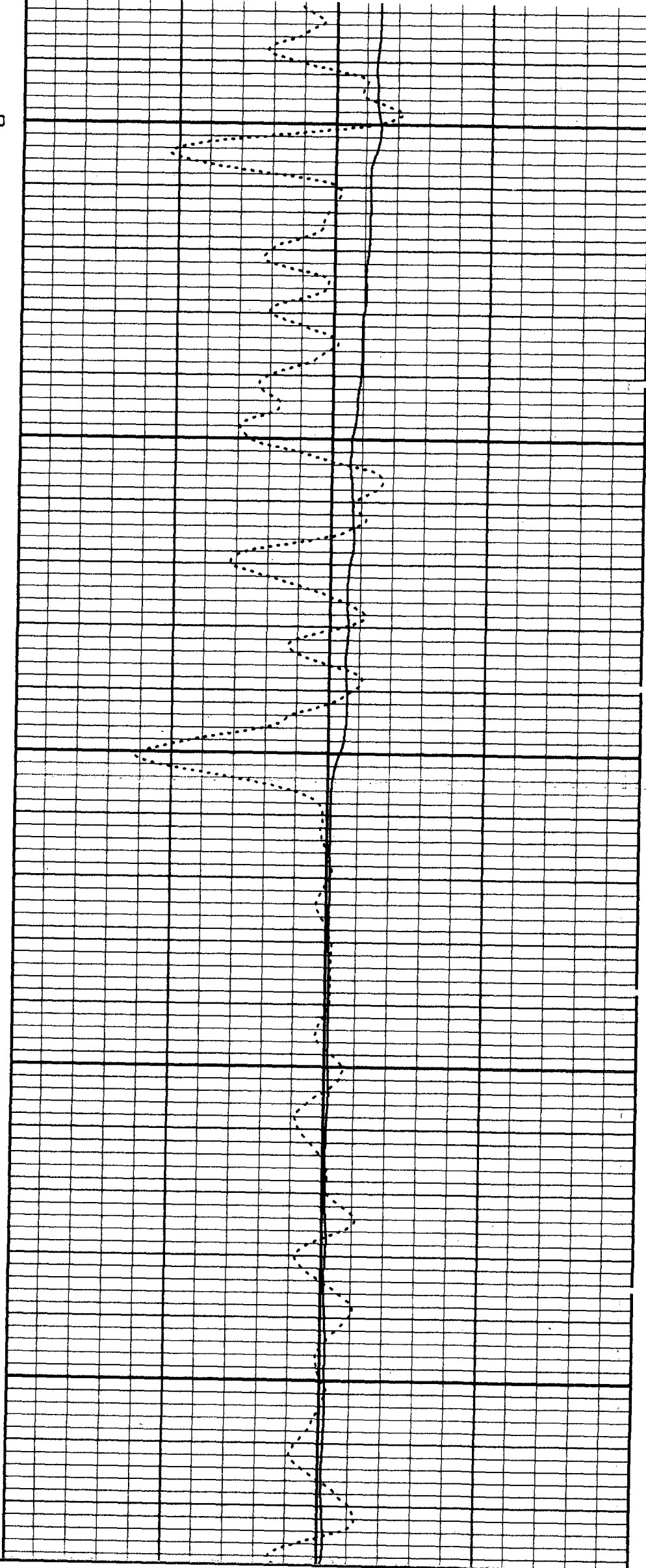


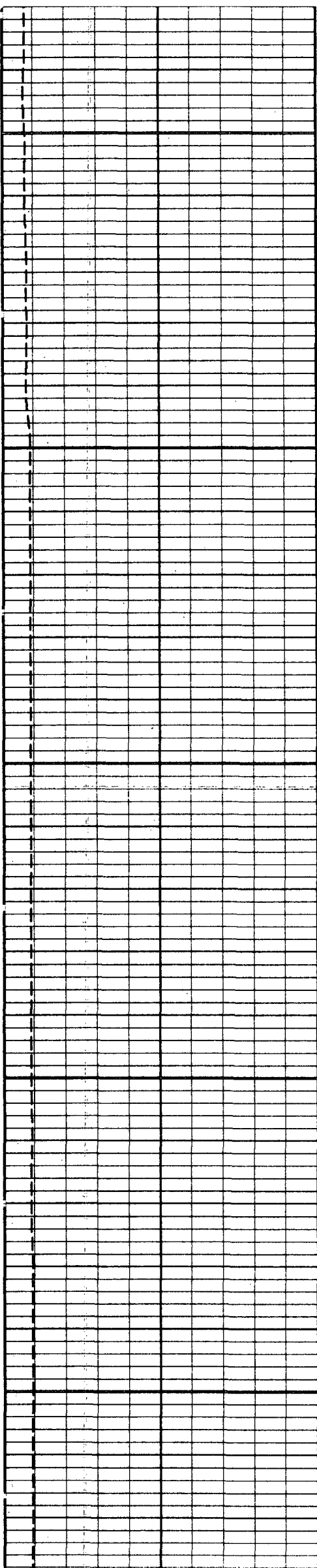


2000

2100

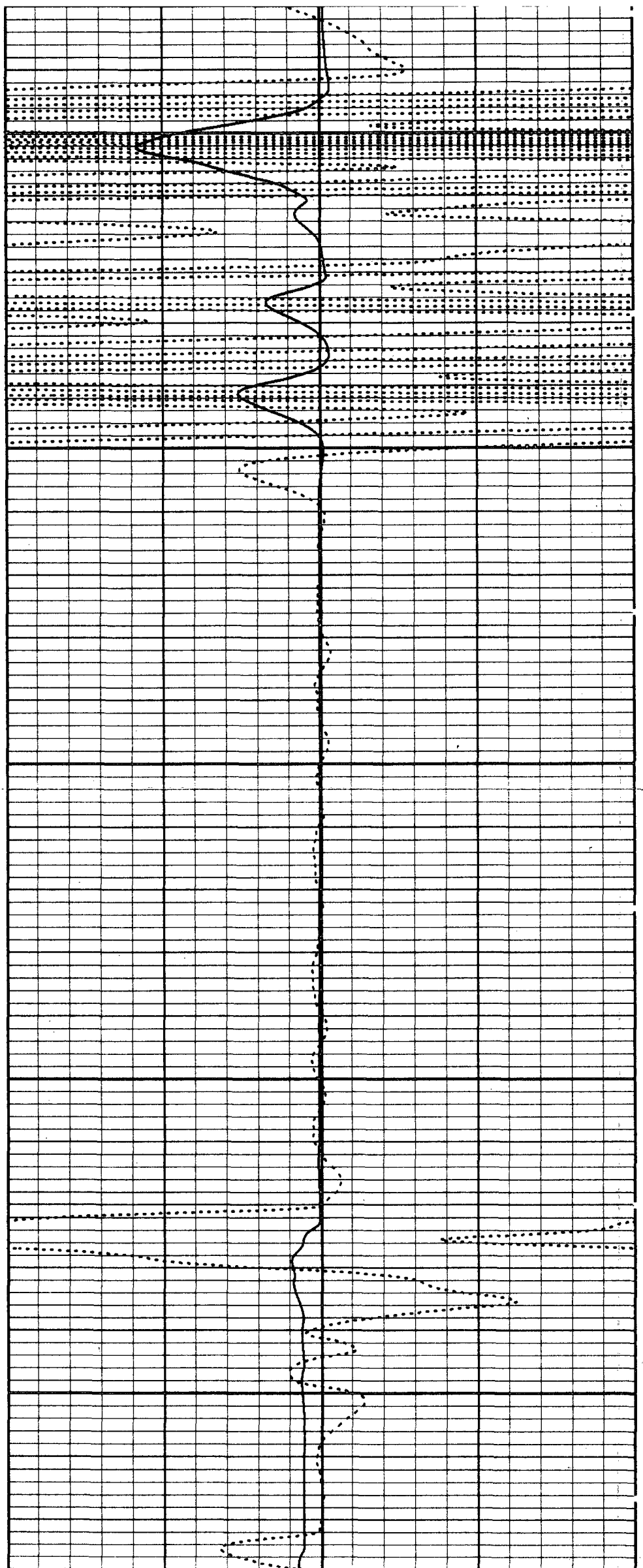
2200

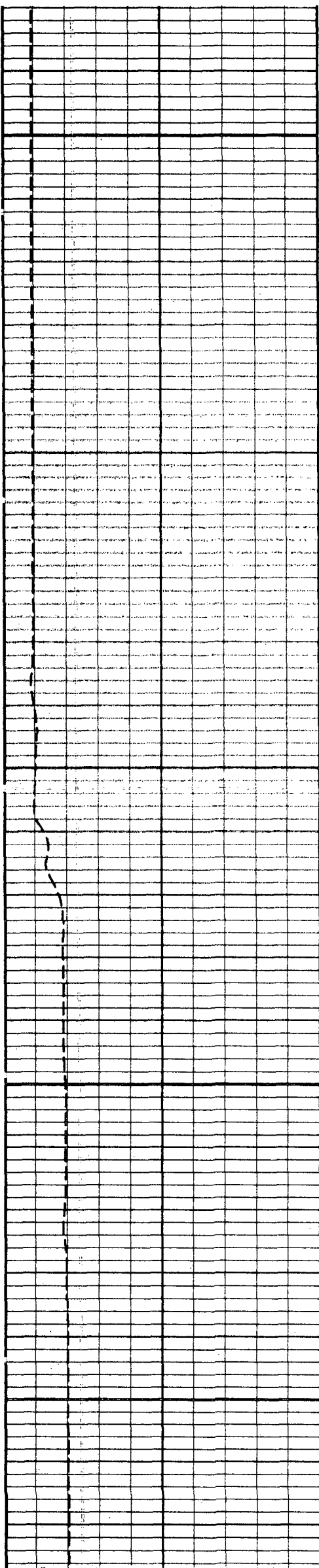




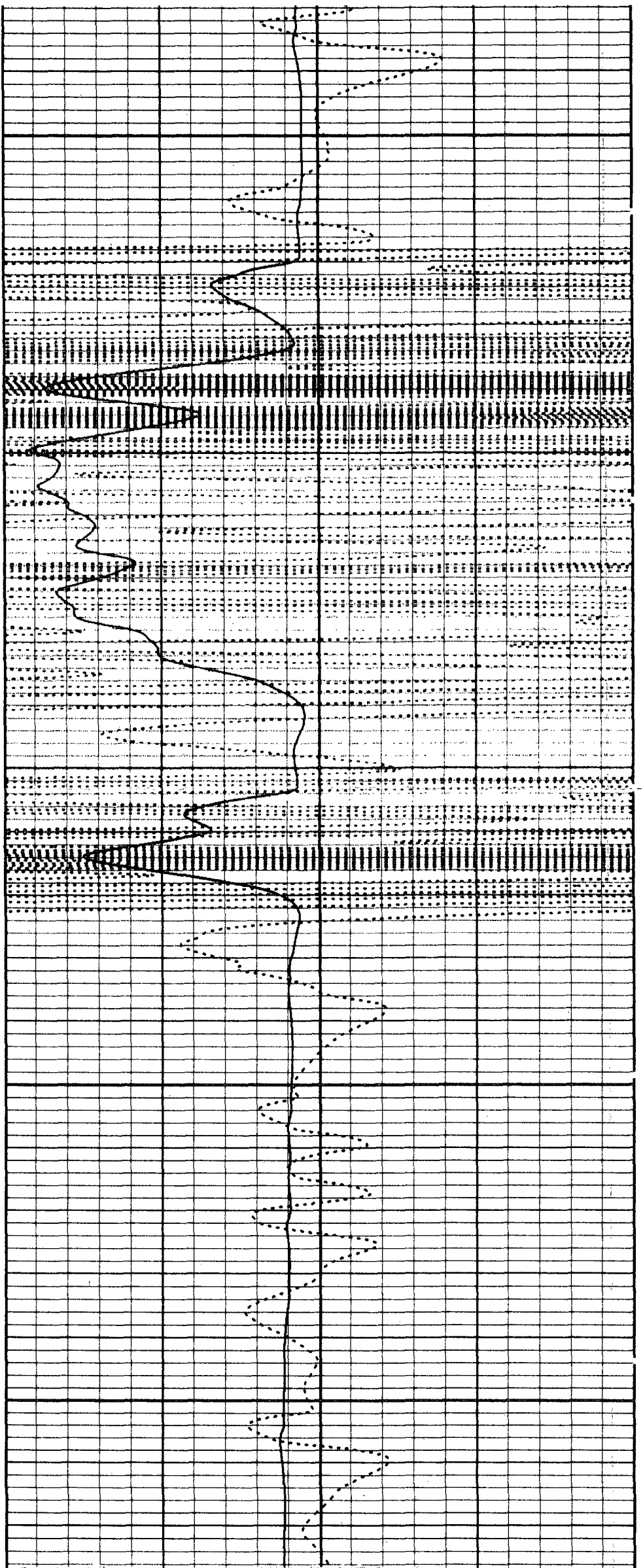
2300

2400



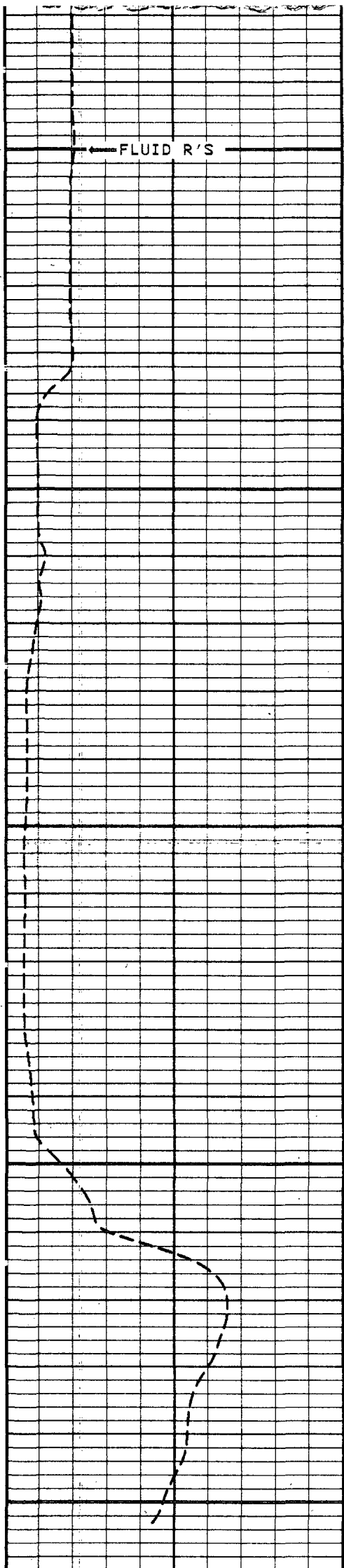


2500

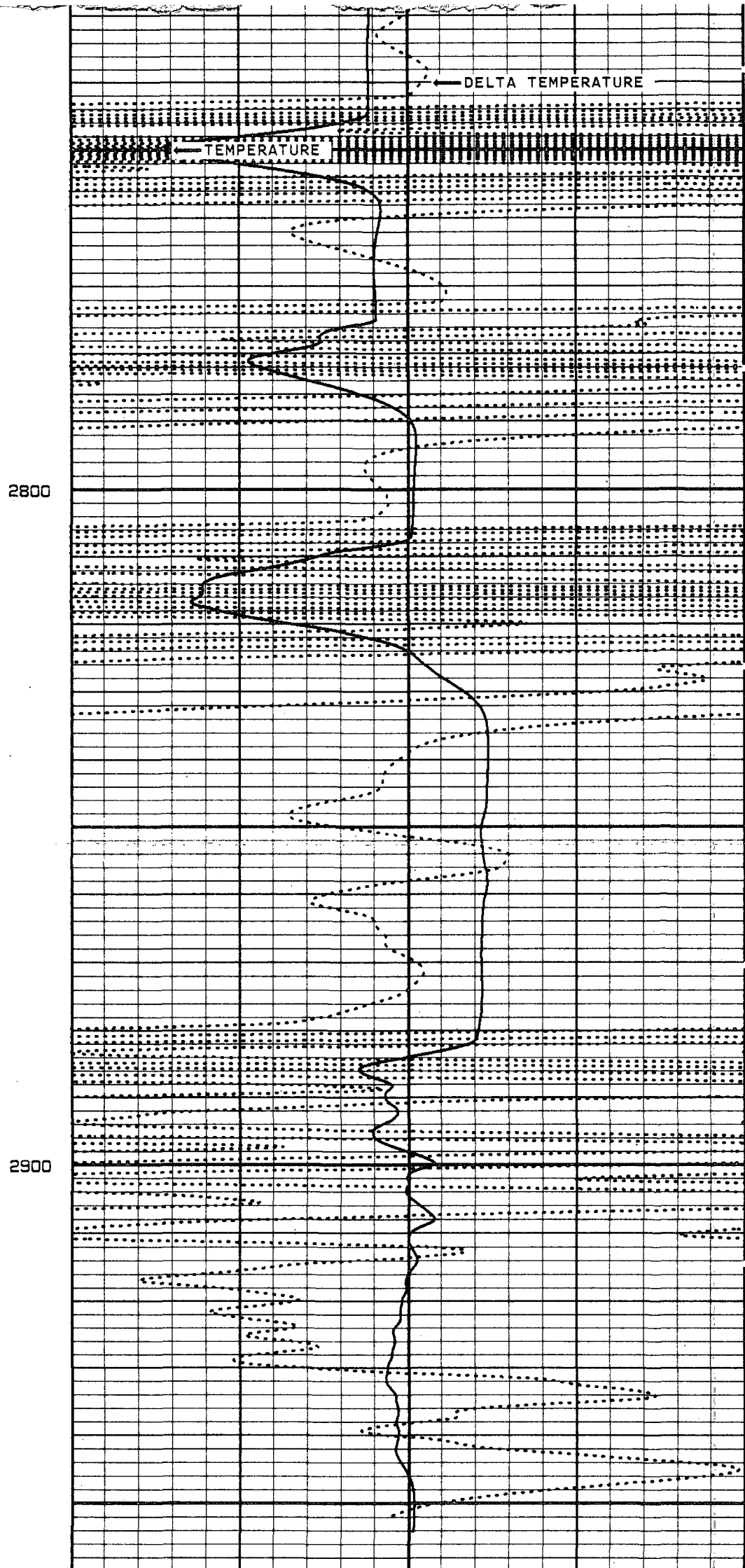


2600

2700



FL-RES  
0.00 OHMS 10.00



TEMPERATURE  
70 DEGREES 110

DELTA TEMPERATURE

START DEPTH: 1595.9 FEET DIRECTION: DOWN DATE: 03/06/96 TIME: 10:44:23 MODE: TRACE PLAYBACK

EPIW210FRM

MAIN PASS

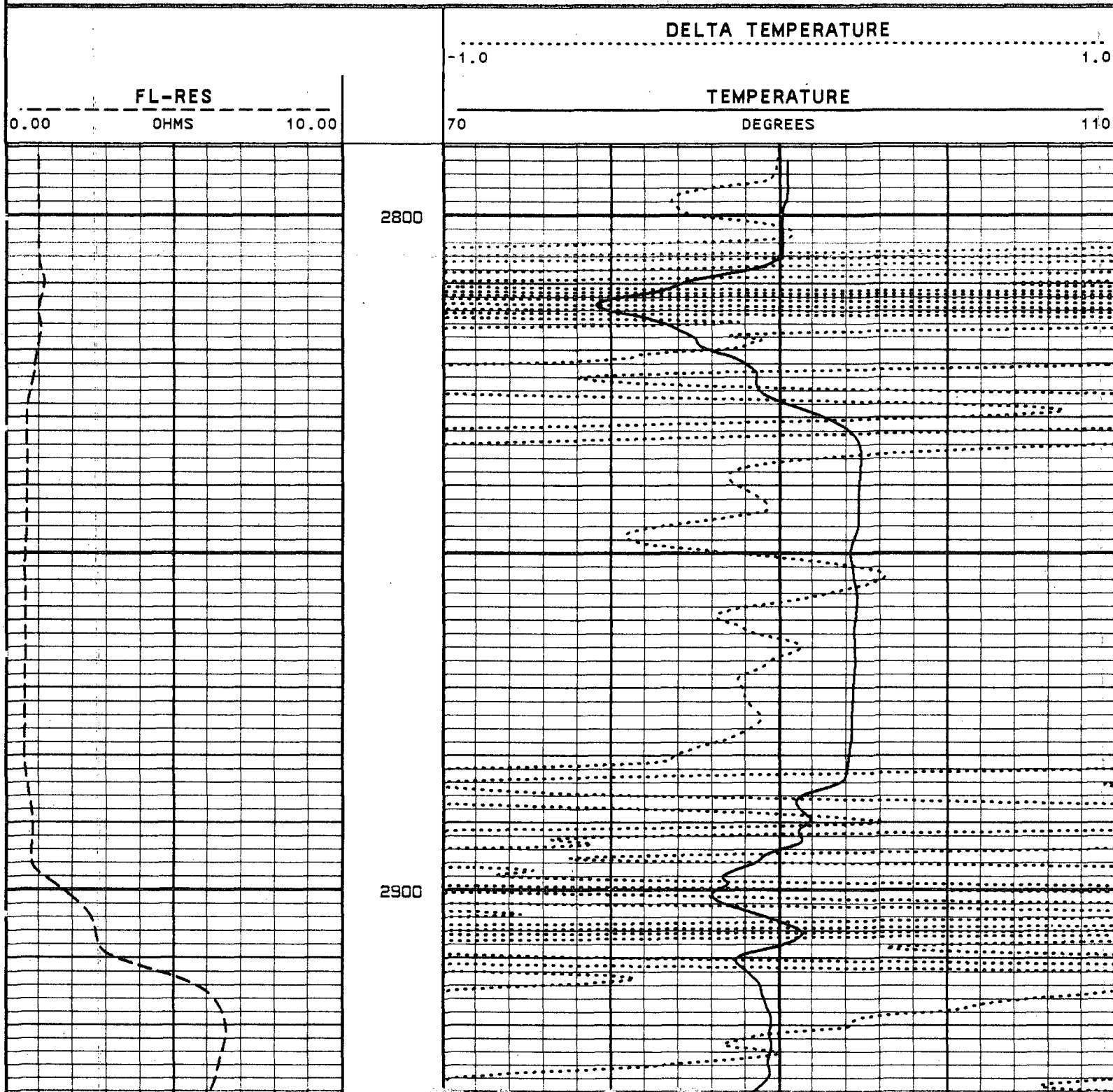
VERSION: 2.26

VERSION: 2.26

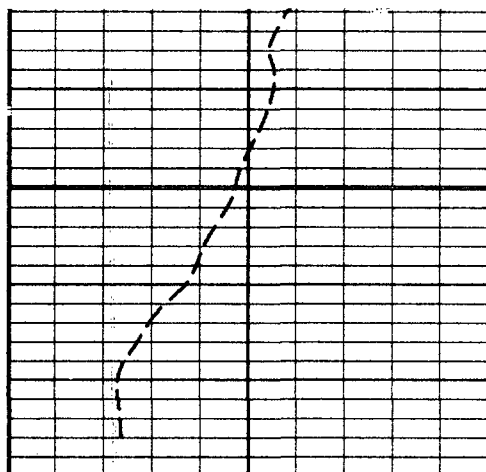
REPEAT SECTION

EPIW210FRR

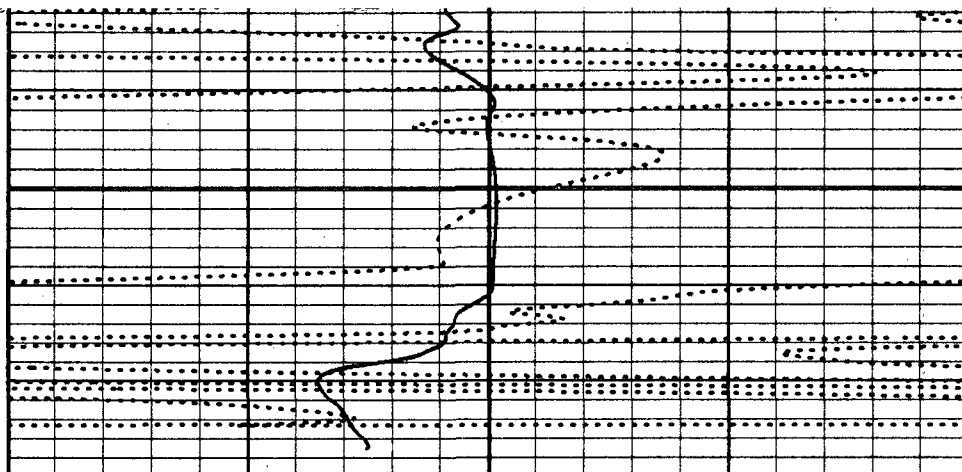
FINISH DEPTH: 2980.7 FEET DIRECTION: DOWN DATE: 03/06/96 TIME: 11:23:29 MODE: TRACE PLAYBACK







FL-RES  
0.00 OHMS 10.00



TEMPERATURE  
70 DEGREES 110  
DELTA TEMPERATURE  
-1.0 1.0

START DEPTH: 2795.3 FEET DIRECTION: DOWN DATE: 03/06/96 TIME: 11:17:46 MODE: TRACE PLAYBACK

EPIW210FRR

REPEAT SECTION

VERSION: 2.26

MASTER CALIBRATION SUMMARY

FILE: DATE: 03/06/96 TIME: 11:28 VERSION: 2.26

TEMPERATURE TOOL #30

DATE: 03/10/95 TIME: 15:29

	MEASURED	UNITS	STANDARD	MINIMUM	MAXIMUM	DEVIATION	UNITS
ZERO	288.3	CPS	69.6	69.3	69.8	0.14	DEGF
PLUS	456.9	CPS	103.6	102.9	104.5	0.29	DEGF

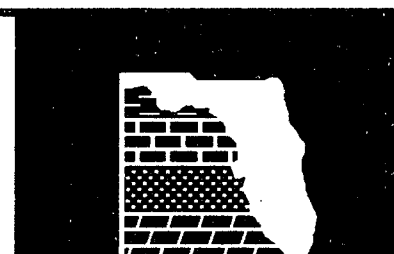
FL-RES TOOL #30

DATE: 05/04/95 TIME: 15:50

	MEASURED	UNITS	STANDARD	MINIMUM	MAXIMUM	DEVIATION	UNITS
SONDEX 50000 MMHOS	9560.0	CPS	0.20	0.20	0.20	0.000	OHMS
SONDEX 25000 MMHOS	5050.0	CPS	0.40	0.40	0.40	0.000	OHMS
SONDEX 10000 MMHOS	2060.0	CPS	1.00	1.00	1.00	0.000	OHMS
SONDEX 2000 MMHOS	410.0	CPS	5.00	20.00	20.00	0.000	OHMS
SONDEX 500 MMHOS	99.0	CPS	20.00	20.00	20.00	0.000	OHMS

COMPANY CHARLOTTE COUNTY UTILITIES

WELL EAST PORT WRF I.W. #2



RECEIVED  
D.E.P.

97 OCT 27 PM 5: 34

SOUTH DISTRICT

STATE

FIELD