



# FLOFLORIDA

GEOPHYSICAL LOGGING, INC.

HIGH RESOLUTION  
TEMPERATURE  
SURVEY

FILE NO. UC08-254545

COMPANY CHARLOTTE COUNTY UTILITIES

WELL EAST PORT WRF I.W. #2

FIELD EAST PORT

COUNTY CHARLOTTE STATE FLORIDA

LOCATION

LAT. 26 DEG. 58' 26" N  
LONG. 82 DEG. 02' 17" W

SEC. 20 TWP. 40S RGE 23E

PERMANENT DATUM PAD LEVEL (P.L.) ELEV. \_\_\_\_\_

LOG MEASURED FROM P.L. FT. ABOVE PERMANENT DATUM

DRILLING MEASURED FROM P.L. ELEV.: K.B.  
D.F. \_\_\_\_\_  
G.L. \_\_\_\_\_

OTHER SERVICES:  
BHC  
DIL  
XYCALIPER

DATE 29-NOV.-95

RUN NO. FOUR

TYPE LOG HRT

DEPTH-DRILLER 1654'

DEPTH-LOGGER 1654'

LOGGED INTERVAL 1654' TO 380'

OPERATING RIG TIME 1.5 HOURS

TYPE FLUID IN HOLE WATER

SALINITY, PPM CL NA

DENSITY-VISCOSITY NA

LEVEL FULL

MAX. REC. TEMP, DEG F. 95 DEG. F.

EQUIPMENT-LOCATION 101 - FTM

RECORDED BY JONES/WILLIAMS

WITNESSED BY G. KENNEDY

BOREHOLE RECORD		CASING RECORD					
RUN NO.	BIT	FROM	TO	SIZE	WGT.	FROM	TO
ONE	48"	424'	SURFACE	38"	.5 MT.	393'	SURFACE
FOUR	12.25"	1654'	424'				

ALL INTERPRETATIONS ARE OPINIONS BASED ON INFERENCES FROM ELECTRICAL OR OTHER MEASUREMENTS AND WE CANNOT AND DO NOT GUARANTEE THE ACCURACY OR CORRECTNESS OF ANY INTERPRETATION, AND WE SHALL NOT, EXCEPT IN THE CASE OF GROSS OR WILLFULL NEGLIGENCE ON OUR PART, BE LIABLE OR RESPONSIBLE FOR ANY LOSS, COSTS, DAMAGES, OR EXPENSES INCURRED OR SUSTAINED BY ANYONE RESULTING FROM ANY INTERPRETATION MADE BY ANY OF OUR OFFICERS, AGENTS OR EMPLOYEES. THESE INTERPRETATIONS ARE ALSO SUBJECT TO OUR GENERAL TERMS AND CONDITIONS SET OUT IN OUR CURRENT PRICE SCHEDULE.


**REMARKS**

XY CALIPER/GAMMA RAY/TEMPERATURE TOOL STRING CONFIGURATION

-- GAMMA RAY -- 3 FT. LONG  
MEASURE POINT 7.5 FT. FROM BOT

-- XY CALIPER -- 6 FT. LONG

-- LONG ARM MEASURE POINT 4 FT. FROM BOT



Entered into  
**OCULUS**  
South District

-- TOTAL TOOL STRING LENGTH = 11.5 FT.--



-- TEMPERATURE -- 2.5 FT. LONG  
MEASURE POINT AT BOT

-- BOT

REMARKS

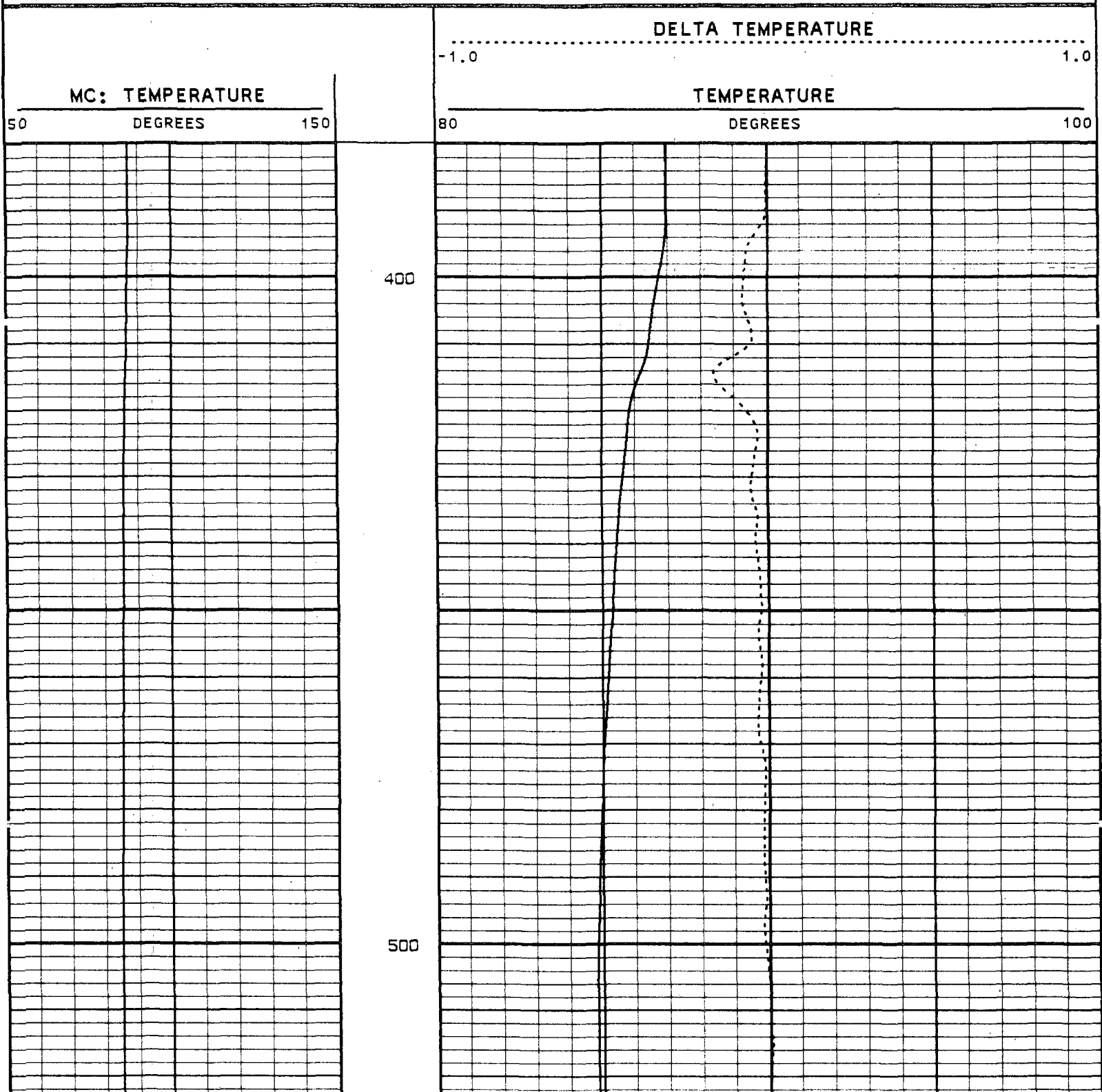
LOGGED GOING DOWN HOLE

VERSION: 2.26

MAIN PASS

EPIW24TEMP

FINISH DEPTH: 1673.0 FEET DIRECTION: DOWN DATE: 11/29/95 TIME: 10:13:35 MODE: TRACE PLAYBACK



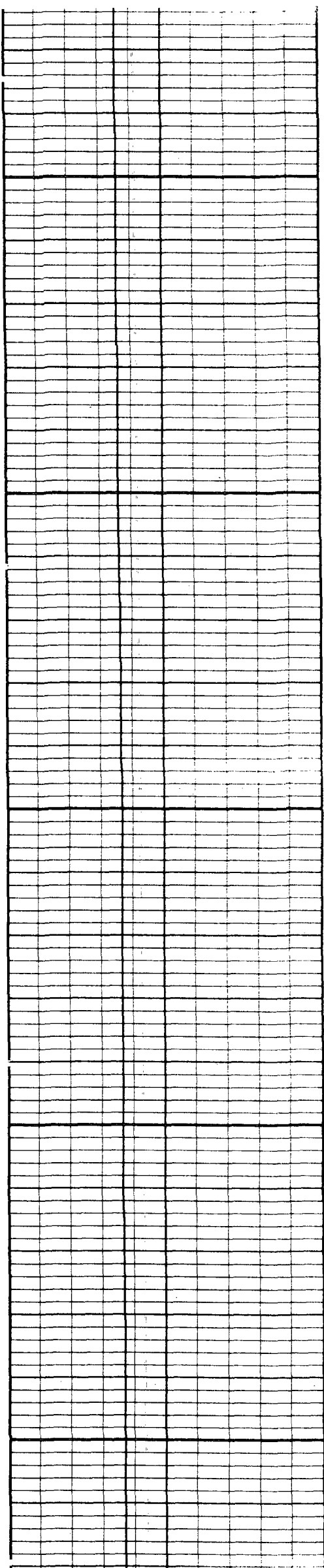
← TEMPERATURE

← TEMPERATURE

← DELTA TEMPERATURE

600

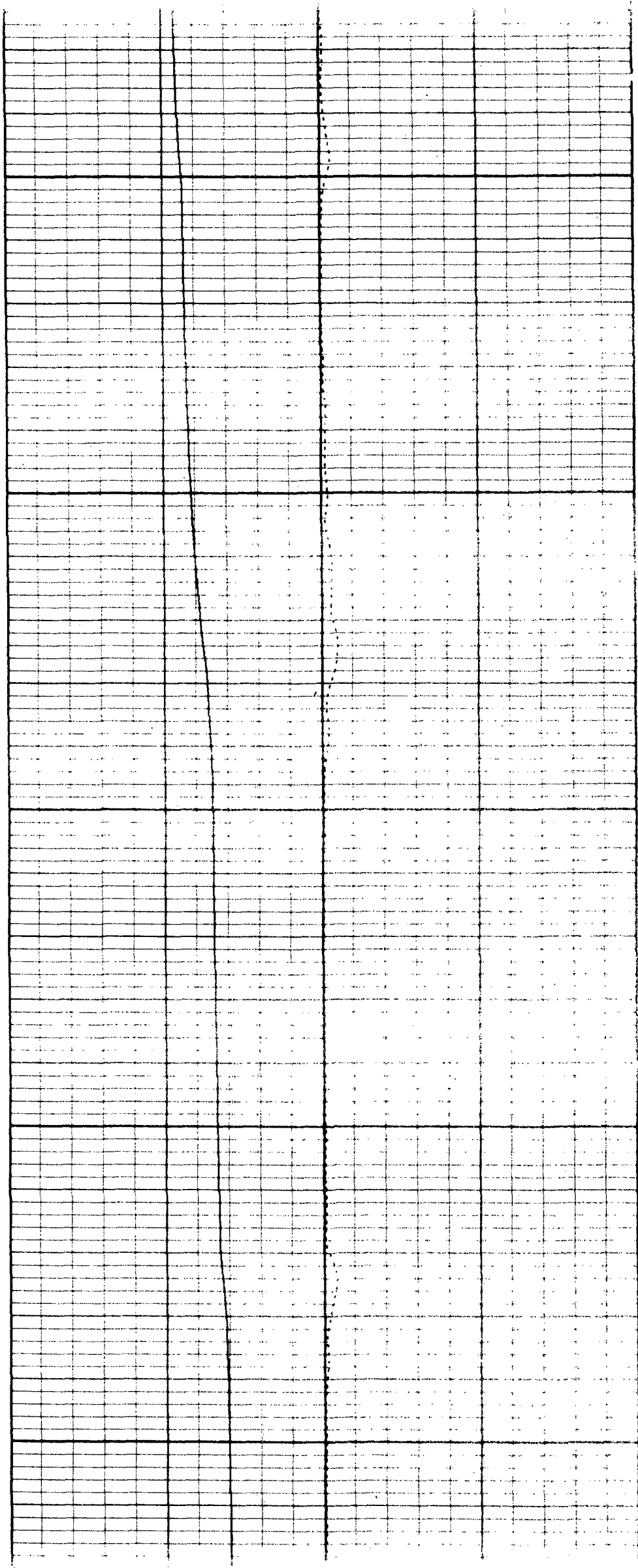
700

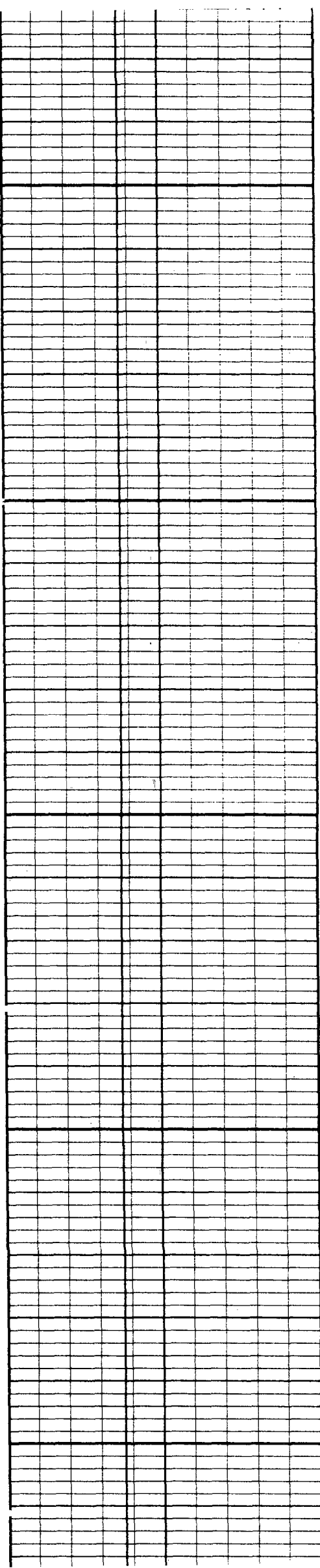


800

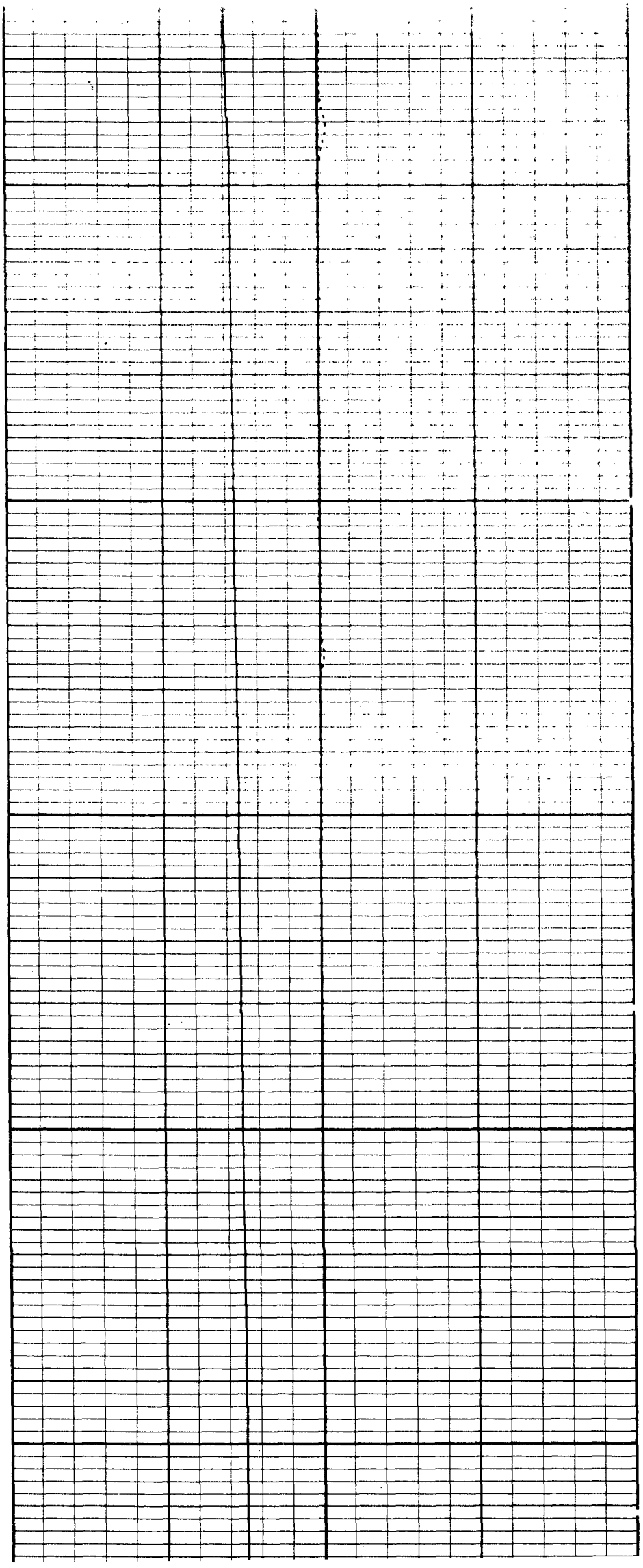
900

1000

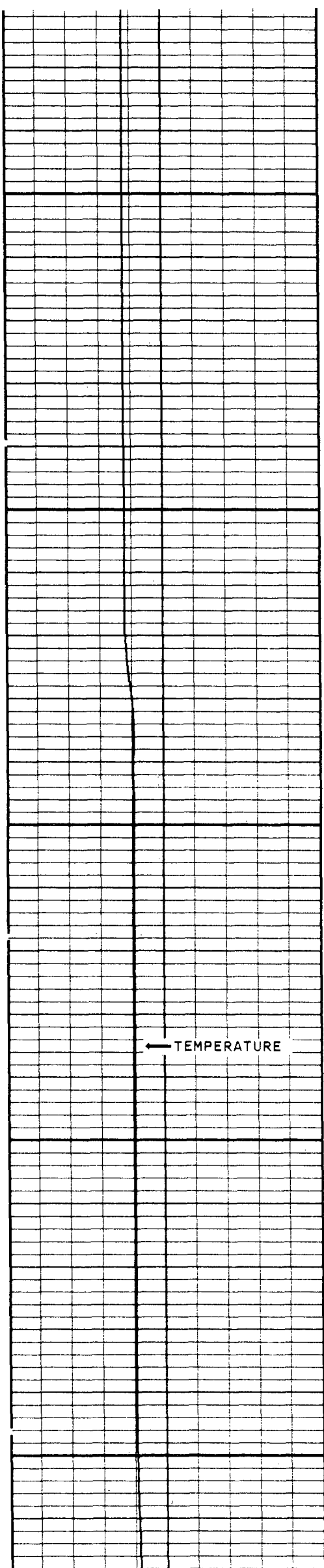




1100



1200

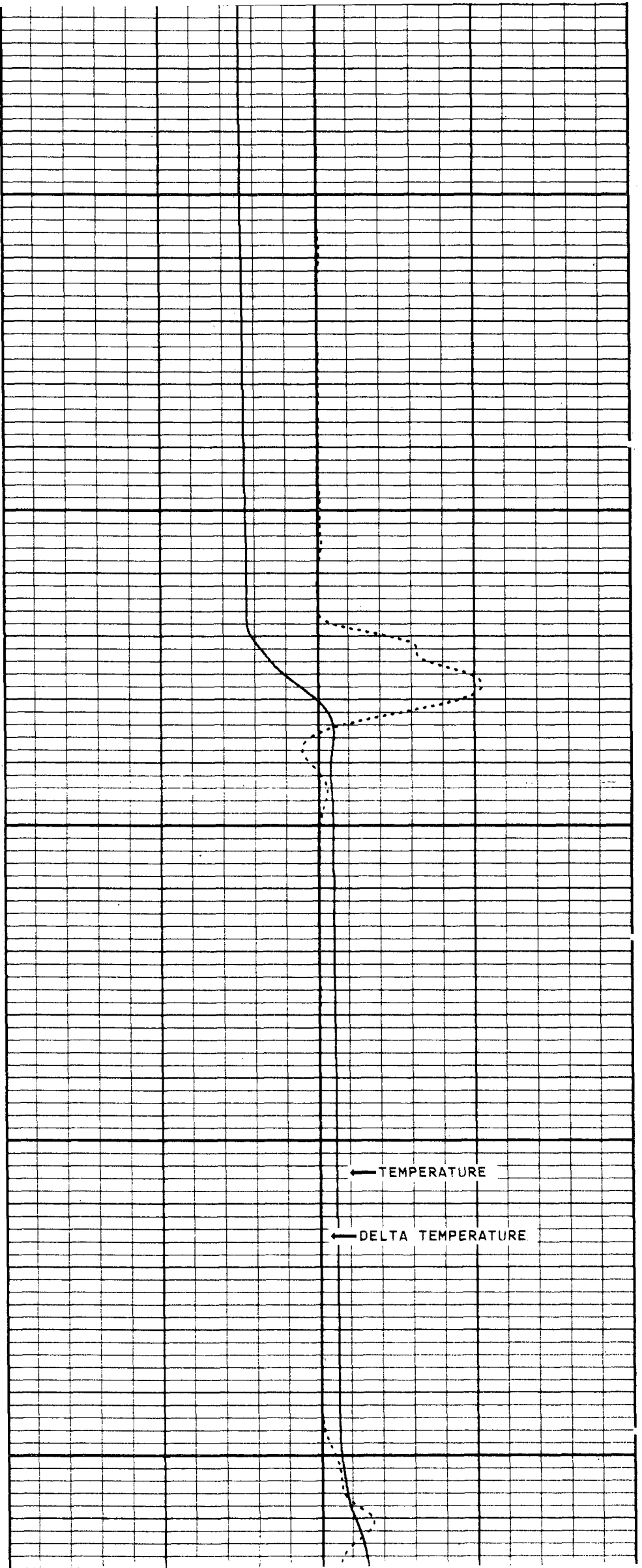


1300

1400

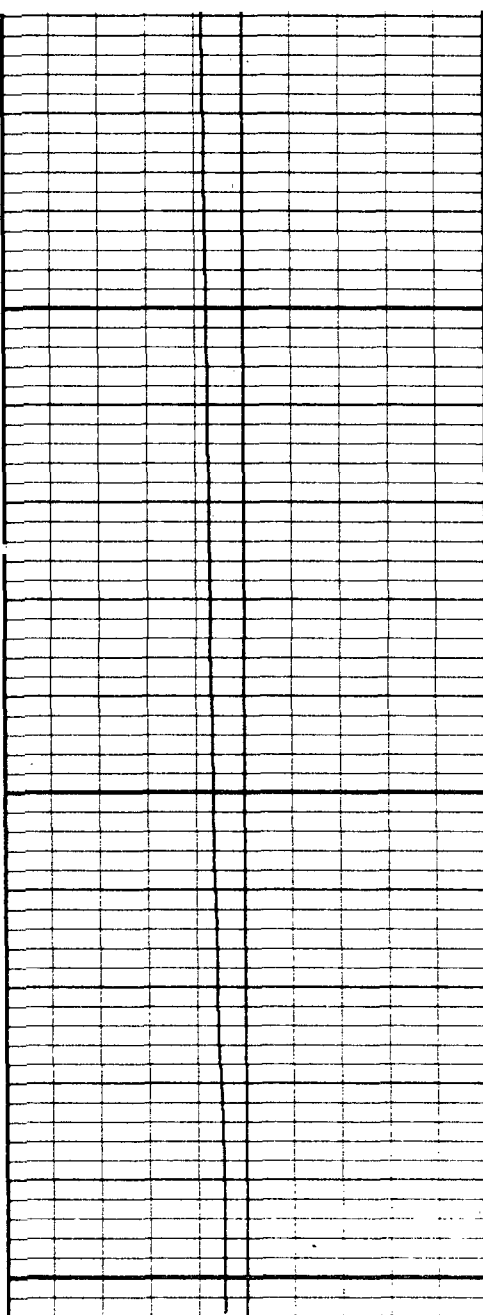
← TEMPERATURE

1500

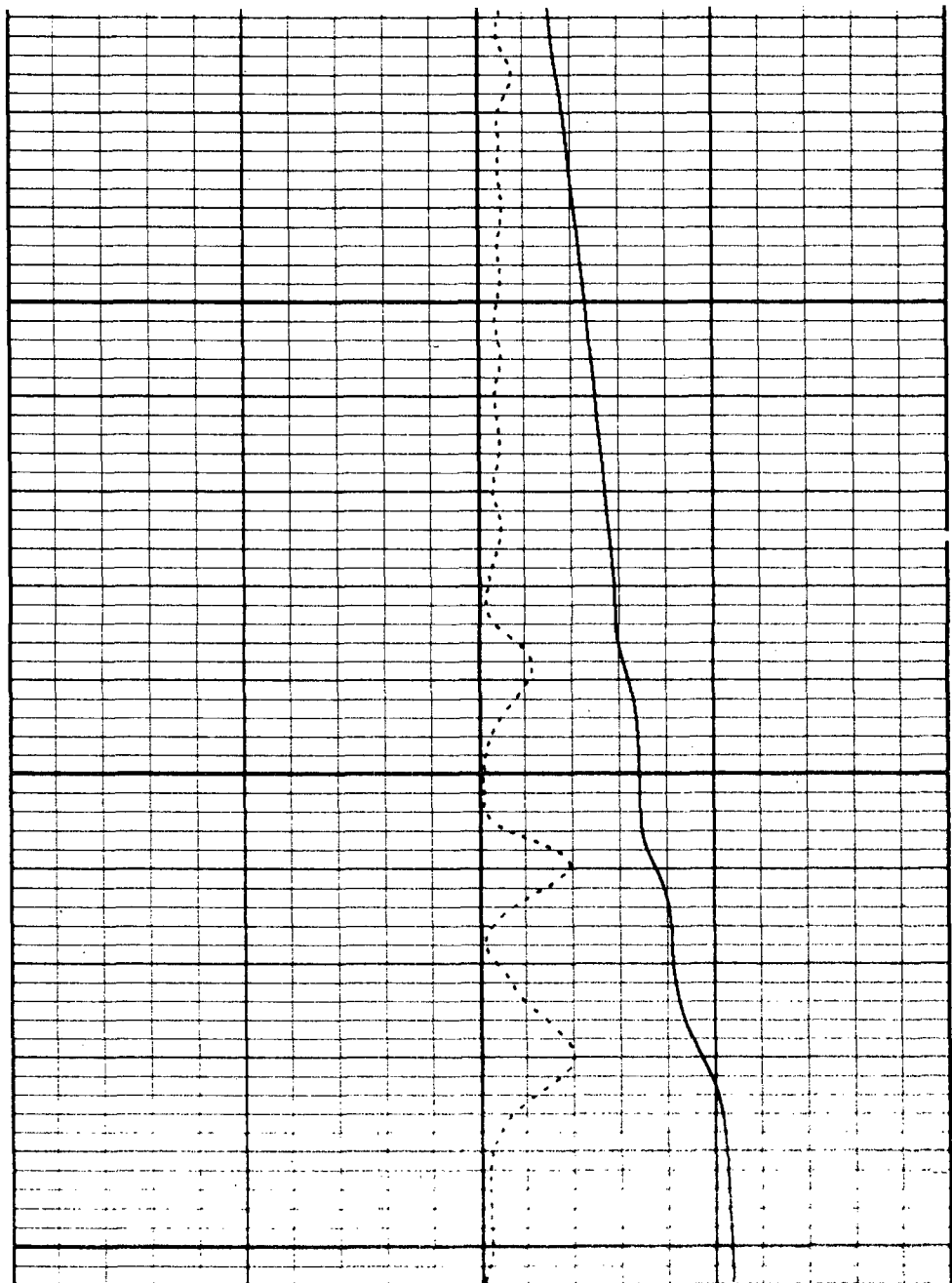


← TEMPERATURE

← DELTA TEMPERATURE



1600



MC: TEMPERATURE  
 50 DEGREES 150

TEMPERATURE  
 80 DEGREES 100  
 DELTA TEMPERATURE  
 -1.0 1.0

START DEPTH: 375.0 FEET DIRECTION: DOWN DATE: 11/29/95 TIME: 09:55:47 MODE: TRACE PLAYBACK  
 EPIW24TEMP  
 MAIN PASS  
 VERSION: 2.26

REMARKS  
 LOGGED GOING DOWN HOLE  
 VERSION: 2.26  
 REPEAT PASS

EPIW24TEM1

DELTA TEMPERATURE

-1.0 1.0

MC: TEMPERATURE

50 DEGREES 150

TEMPERATURE

80 DEGREES 100

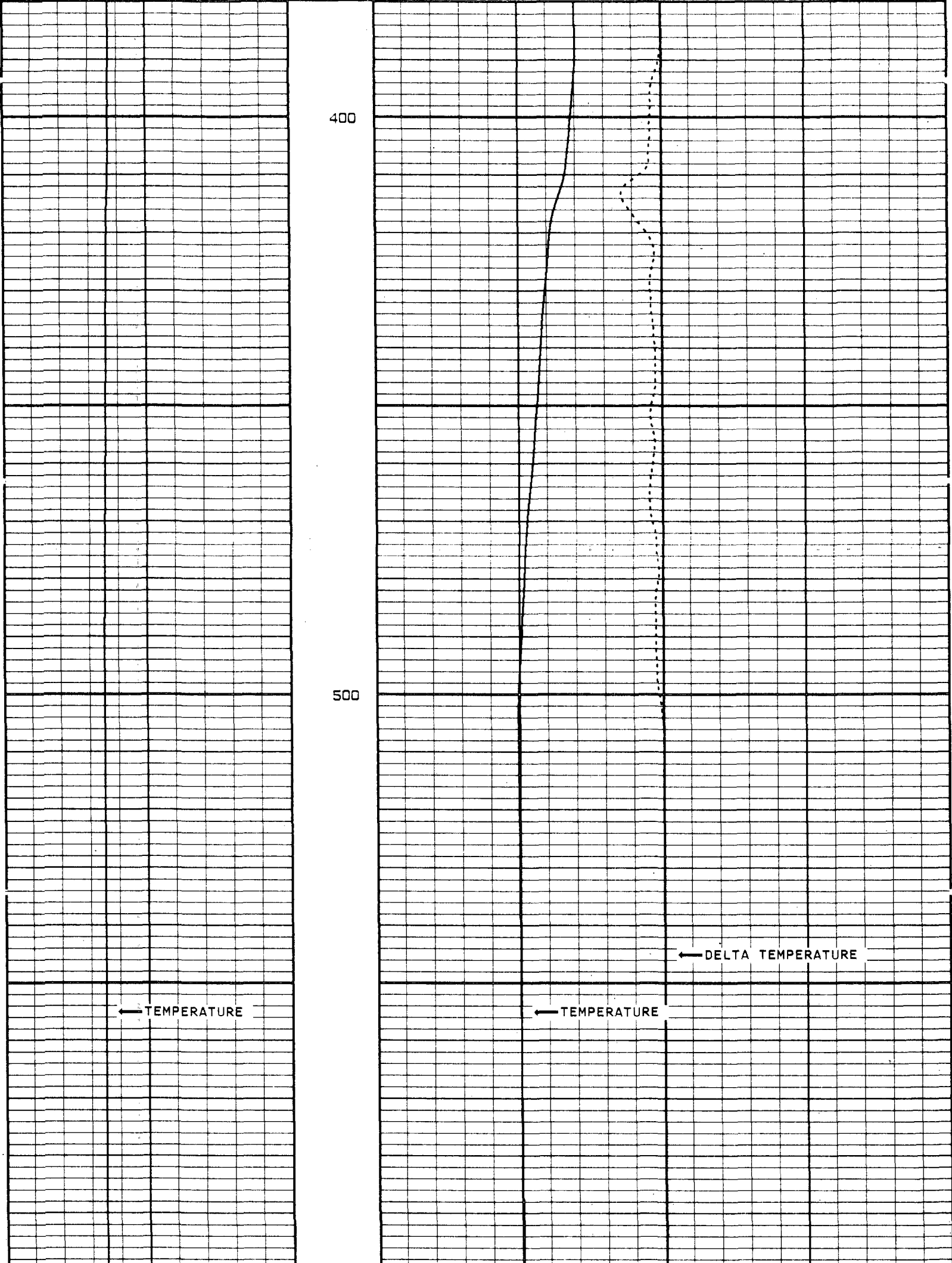
400

500

← DELTA TEMPERATURE

← TEMPERATURE

← TEMPERATURE





<b>MC: TEMPERATURE</b> 50 DEGREES 150	<b>TEMPERATURE</b> 80 DEGREES 100	<b>DELTA TEMPERATURE</b> -1.0 1.0
START DEPTH: <b>344.6 FEET</b> DIRECTION: <b>DOWN</b> DATE: <b>11/29/95</b> TIME: <b>10:47:52</b> MODE: <b>TRACE PLAYBACK</b> <b>EPIW24TEM1</b>		
<b>REPEAT PASS</b>		
VERSION: 2.26		

**MASTER CALIBRATION SUMMARY**

FILE:                      DATE: 11/29/95                      TIME: 15:42                      VERSION: 2.26

TEMPERATURE #10

DATE: 10/25/95                      TIME: 16:43

	MEASURED	UNITS	STANDARD	MINIMUM	MAXIMUM	DEVIATION	UNITS
ZERO	457.4	CPS	69.0	68.7	69.4	0.26	DEGF
PLUS	724.5	CPS	122.9	122.7	123.1	0.14	DEGF

COMPANY CHARLOTTE COUNTY UTILITIES

---

WELL EAST PORT WRF I.W. #2

---

FIELD EAST PORT                      STATE FLORIDA

