



# FLORIDA

GEOPHYSICAL LOGGING, INC.

HIGH RESOLUTION  
TEMPERATURE  
LOG

FILE NO. UC08-254545

COMPANY CHARLOTTE COUNTY UTILITIES

WELL EAST PORT WRF I.M. #2

FIELD EAST PORT

COUNTY CHARLOTTE

STATE FLORIDA

LOCATION

LAT. 26 DEG. 58' 26" N

LONG. 82 DEG. 02' 17" W

SEC. 20 TWP 40S RGE 23E

OTHER SERVICES:

XYCALGR

BHC

DIL

PERMANENT DATUM PAD LEVEL (P.L.) ELEV. \_\_\_\_\_

LOG MEASURED FROM P.L. FT. ABOVE PERMANENT DATUM

ELEV.: K.B. \_\_\_\_\_  
D.F. \_\_\_\_\_  
G.L. \_\_\_\_\_

DATE 31-MARCH-1996

RUN NO. FOURTEEN

TYPE LOG HRT

DEPTH-DRILLER 3245'

DEPTH-LOGGER 3244'

LOGGED INTERVAL 3244' TO 2900'

OPERATING RIG TIME 1 HOUR

TYPE FLUID IN HOLE WATER

SALINITY, PPM CL N/A

DENSITY-VISCOSITY N/A

LEVEL FULL

MAX. REC. TEMP, DEG F. 88 DEGF.

EQUIPMENT-LOCATION 102 - MIAMI

RECORDED BY WILLIAMS/JONES

WITNESSED BY JOE POLITTE

BOREHOLE RECORD				CASING RECORD			
RUN NO.	BIT	FROM	TO	SIZE	WGT.	FROM	TO
NINE	12 1/4"	2803'	SURFACE	38"	.5" MT.	393'	SURFACE
	8 7/8"	2815'	2803'	30"	.5" MT.	1638'	SURFACE
TEN	12.25"	2970	CASING	20"	.5" MT.	2965'	SURFACE
14	12 1/4"	3245	CASING				

ALL INTERPRETATIONS ARE OPINIONS BASED ON INFERENCES FROM ELECTRICAL OR OTHER MEASUREMENTS AND WE CANNOT AND DO NOT GUARANTEE THE ACCURACY OR CORRECTNESS OF ANY INTERPRETATION, AND WE SHALL NOT, EXCEPT IN THE CASE OF GROSS OR WILLFULL NEGLIGENCE ON OUR PART, BE LIABLE OR RESPONSIBLE FOR ANY LOSS, COSTS, DAMAGES, OR EXPENSES INCURRED OR SUSTAINED BY ANYONE RESULTING FROM ANY INTERPRETATION MADE BY ANY OF OUR OFFICERS, AGENTS OR EMPLOYEES. THESE INTERPRETATIONS ARE ALSO SUBJECT TO OUR GENERAL TERMS AND CONDITIONS SET OUT IN OUR CURRENT PRICE SCHEDULE.

### REMARKS

XY CALIPER/GAMMA RAY/TEMPERATURE TOOL STRING CONFIGURATION



Entered into  
**OCULUS**  
South District

-- GAMMA RAY -- 3 FT. LONG  
MEASURE POINT 7.5 FT. FROM BOT

-- TOTAL TOOL STRING LENGTH = 11.5 FT.--

-- XY CALIPER -- 6 FT. LONG

-- LONG ARM MEASURE POINT 4 FT. FROM BOT

-- TEMPERATURE -- 2.5 FT. LONG  
MEASURE POINT AT BOT

-- BOT

REMARKS

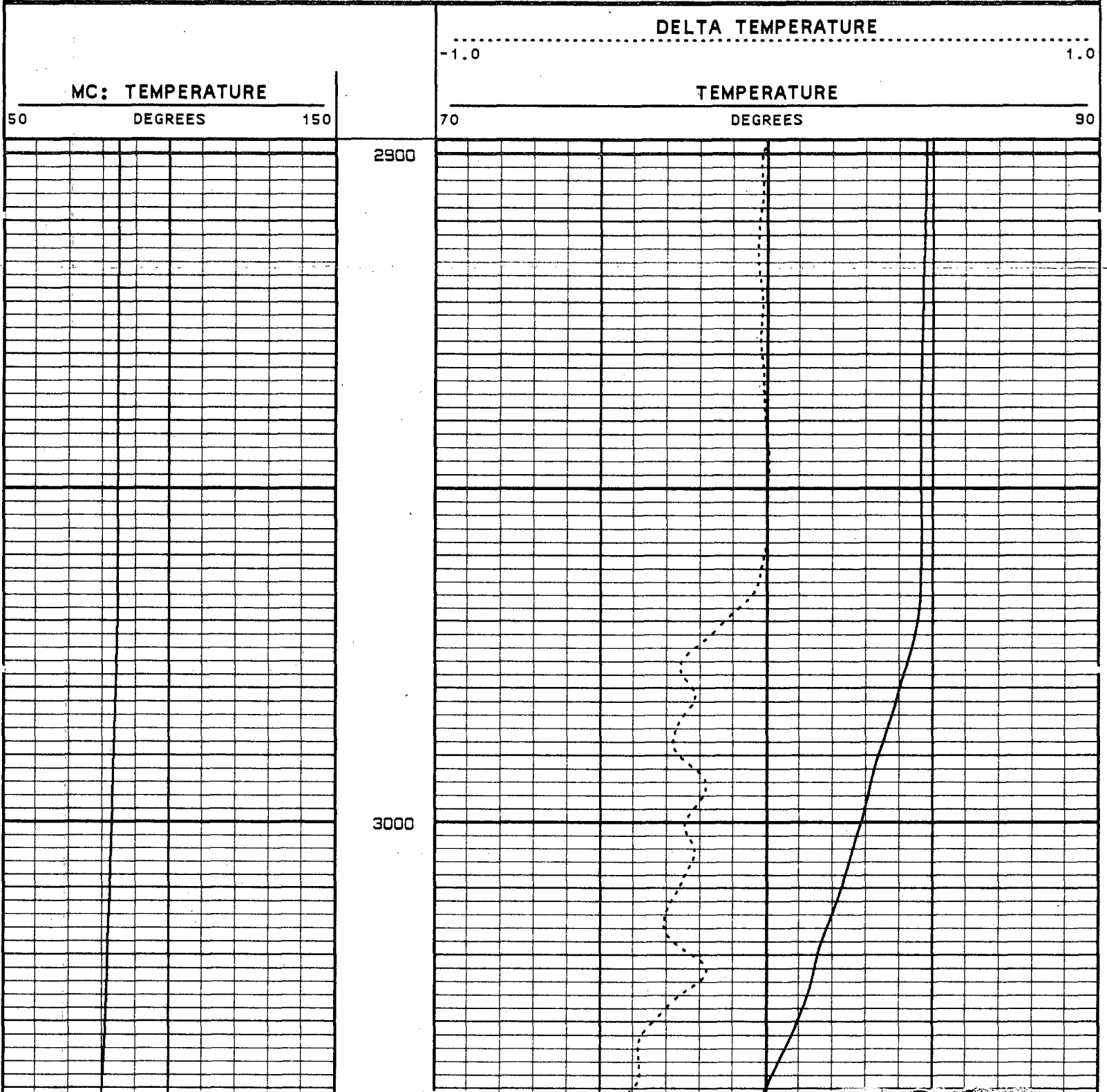
LOGGED GOING DOWN

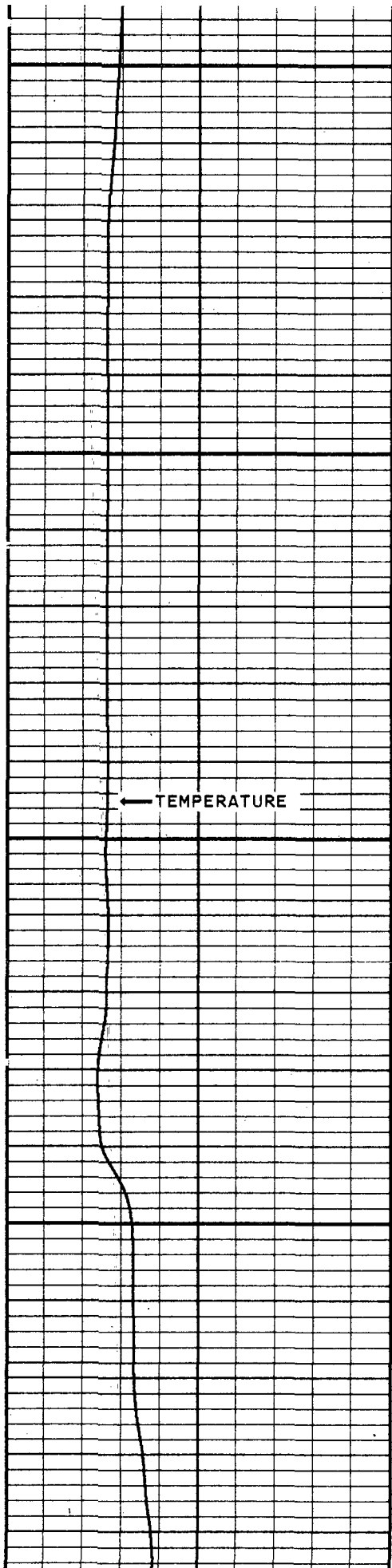
VERSION: 2.26

MAIN PASS

EPIW214TEM

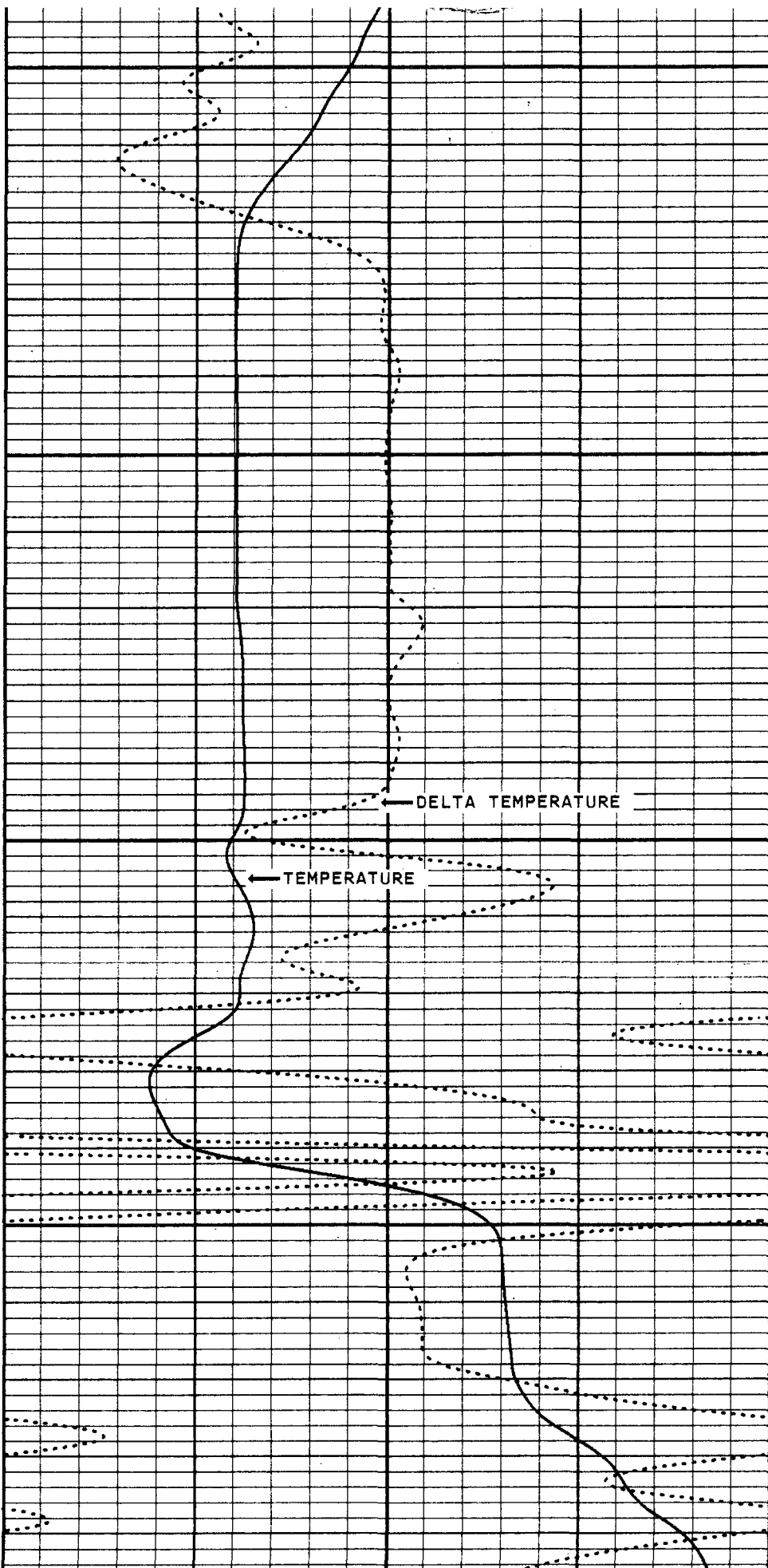
FINISH DEPTH: 3260.0 FEET DIRECTION: DOWN DATE: 04/01/96 TIME: 08:01:03 MODE: TRACE PLAYBACK





3100

3200



MC: TEMPERATURE  
50 DEGREES 150

TEMPERATURE  
70 DEGREES 90

DELTA TEMPERATURE  
-1.0 1.0

START DEPTH: 2900.0 FEET DIRECTION: DOWN DATE: 04/01/96 TIME: 07:53:01 MODE: TRACE PLAYBACK

EPIW214TEM

MATH PASS

REMARKS

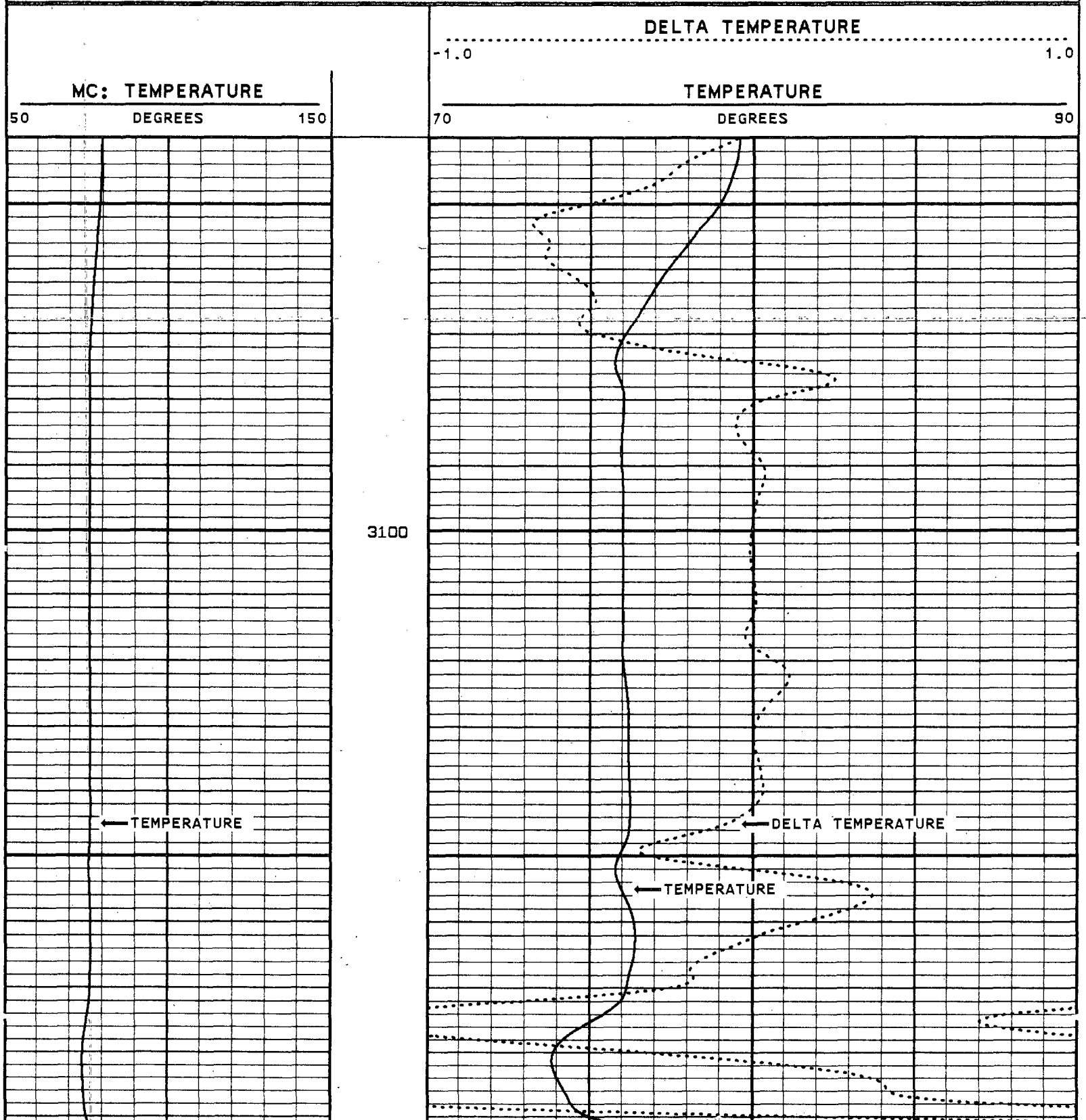
LOGGED GOING DOWN

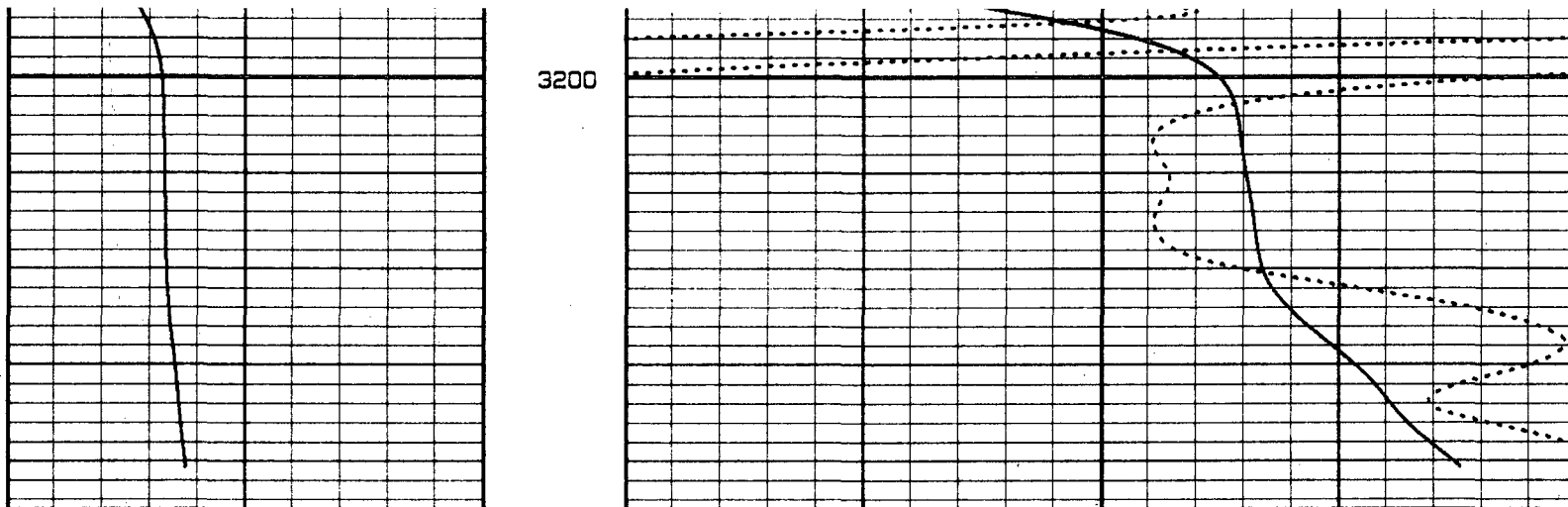
VERSION: 2.26

REPEAT SECTION

EPIW214TER

FINISH DEPTH: 3244.7 FEET DIRECTION: DOWN DATE: 04/01/96 TIME: 08:10:57 MODE: TRACE PLAYBACK





3200

MC: TEMPERATURE  
50 DEGREES 150

TEMPERATURE  
70 DEGREES 90  
DELTA TEMPERATURE  
-1.0 1.0

START DEPTH: 3039.3 FEET DIRECTION: DOWN DATE: 04/01/96 TIME: 08:07:03 MODE: TRACE PLAYBACK  
EPIW214TER

REPEAT SECTION  
VERSION: 2.26

**MASTER CALIBRATION SUMMARY**

FILE: DATE: 04/01/96 TIME: 12:29 VERSION: 2.26

TEMPERATURE #15

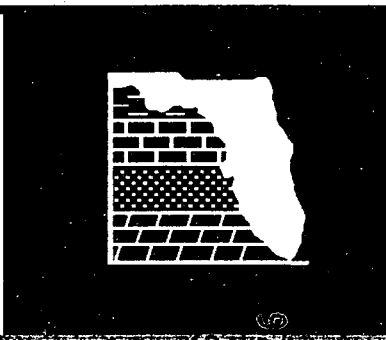
DATE: 03/10/96 TIME: 16:56

	MEASURED	UNITS	STANDARD	MINIMUM	MAXIMUM	DEVIATION	UNITS
ZERO	507.0	CPS	77.0	69.3	69.3	0.06	DEGF
PLUS	710.6	CPS	111.2	110.5	112.2	0.48	DEGF

COMPANY CHARLOTTE COUNTY UTILITIES

WELL EAST PORT WRF I.W. #2

FIELD EAST PORT STATE FLORIDA



RECEIVED  
 D.E.P.  
 OCT 27 PM 5:35  
 SOUTH DISTRICT