



FLORIDA

GEOPHYSICAL LOGGING, INC.

FLUID RESISTIVITY TEMPERATURE LOG

FILE NO. UC08-254545

COMPANY CHARLOTTE COUNTY UTILITIES

WELL EAST PORT WRF I.W. #2

FIELD EAST PORT

COUNTY CHARLOTTE STATE FLORIDA

LOCATION
 LAT. 26 DEG. 58' 26" N
 LONG. 82 DEG. 02' 17" W

SEC. 20 TWP. 40S RGE. 23E

OTHER SERVICES:
 X-Y CALIPER
 GAMMA RAY
 DIL/LL3/SP
 BHC SONIC/VDL

PERMANENT DATUM PAD LEVEL (P.L.) ELEV. _____

LOG MEASURED FROM P.L. FT. ABOVE PERMANENT DATUM

DRILLING MEASURED FROM P.L. ELEV.: K.B. _____

DATE 07-MARCH-1996 D.F. _____

RUN NO. TEN G.L. _____

TYPE LOG FLUID RES/TEMP

DEPTH-DRILLER 2970'

DEPTH-LOGGER 2970'

LOGGED INTERVAL 2970' TO CASING TO _____

OPERATING RIG TIME 1 HOURS

TYPE FLUID IN HOLE WATER

SALINITY, PPM CL N/A

DENSITY-VISCOSITY N/A

LEVEL FULL

MAX. REC. TEMP, DEG F. 95 DEGF.

EQUIPMENT-LOCATION 102 - MIAMI

RECORDED BY LEE/JONES


WITNESSED BY L.ULLMAN

BOREHOLE RECORD				CASING RECORD			
RUN NO.	BIT	FROM	TO	SIZE	MGT.	FROM	TO
NINE	12 1/4"	2803'	SURFACE	38"	.5" MT.	393'	SURFACE
	8 7/8"	2815'	2803'	30"	.5" MT.	1638'	SURFACE
TEN	12.25"	2970'	CASING				

ALL INTERPRETATIONS ARE OPINIONS BASED ON INFERENCES FROM ELECTRICAL OR OTHER MEASUREMENTS AND WE CANNOT AND DO NOT GUARANTEE THE ACCURACY OR CORRECTNESS OF ANY INTERPRETATION, AND WE SHALL NOT, EXCEPT IN THE CASE OF GROSS OR WILLFULL NEGLIGENCE ON OUR PART, BE LIABLE OR RESPONSIBLE FOR ANY LOSS, COSTS, DAMAGES, OR EXPENSES INCURRED OR SUSTAINED BY ANYONE RESULTING FROM ANY INTERPRETATION MADE BY ANY OF OUR OFFICERS, AGENTS OR EMPLOYEES. THESE INTERPRETATIONS ARE ALSO SUBJECT TO OUR GENERAL TERMS AND CONDITIONS SET OUT IN OUR CURRENT PRICE SCHEDULE.

REMARKS

FLUID RESISTIVITY/TEMPERATURE TOOL STRING CONFIGURATION



Entered into
OCULUS
South District

-- TOTAL TOOL STRING LENGTH = 7.5 FT. --

-- 1 11/16" WEIGHT -- 5 FT. LONG

-- FLUID RESISTIVITY/TEMPERATURE 2.5 FT. LONG

REMARKS

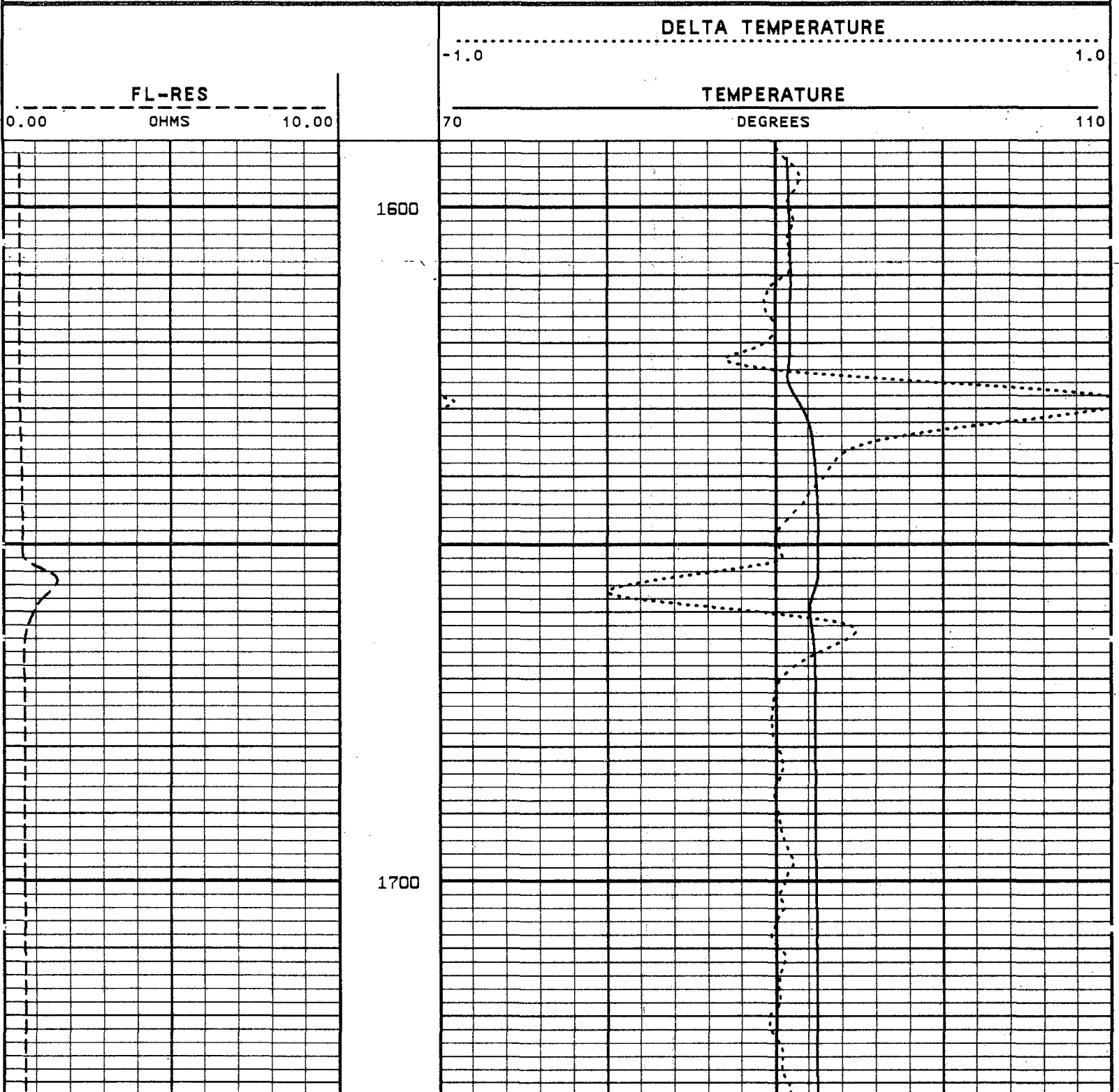
DATA INVALID FROM 1650' TO 1660'.
DUE TO SPUDGING OF TOOL.

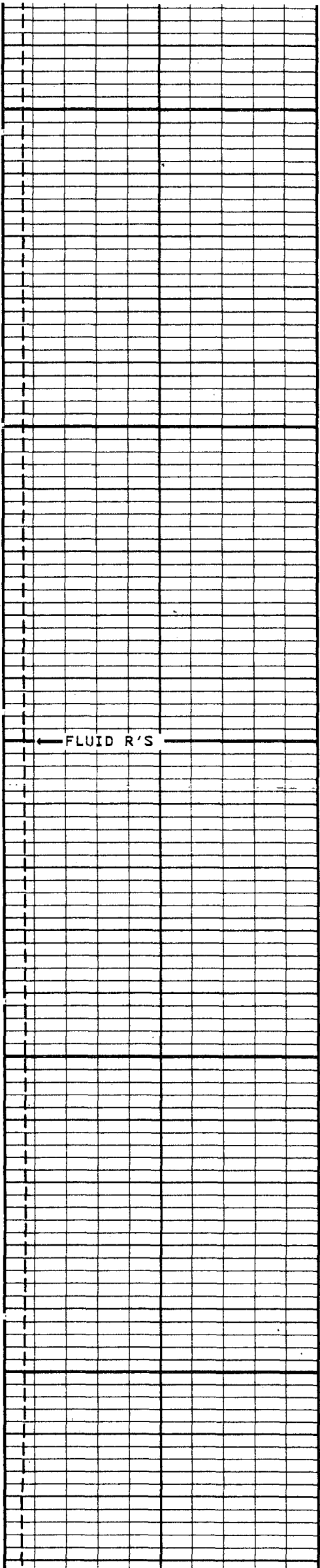
VERSION: 2.26

MAIN PASS

EPIW210FRM

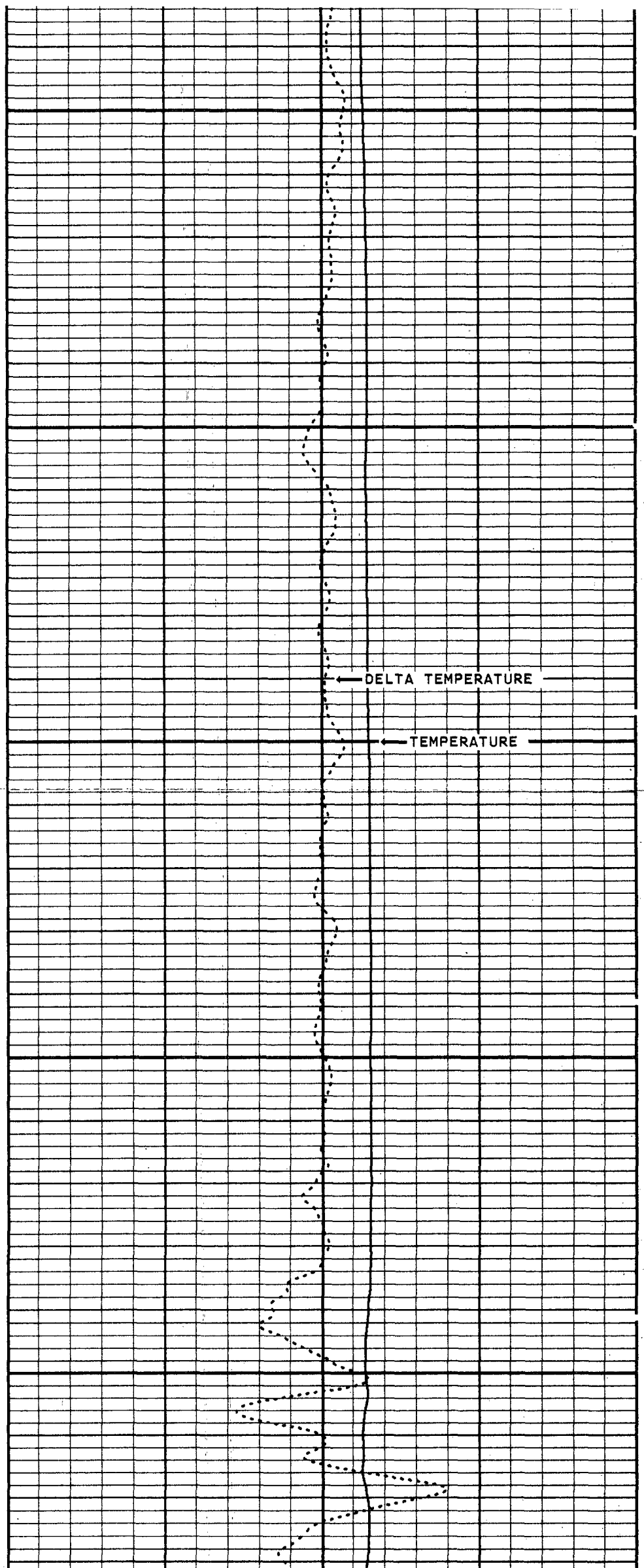
FINISH DEPTH: 2957.8 FEET DIRECTION: DOWN DATE: 03/06/96 TIME: 11:15:26 MODE: TRACE PLAYBACK

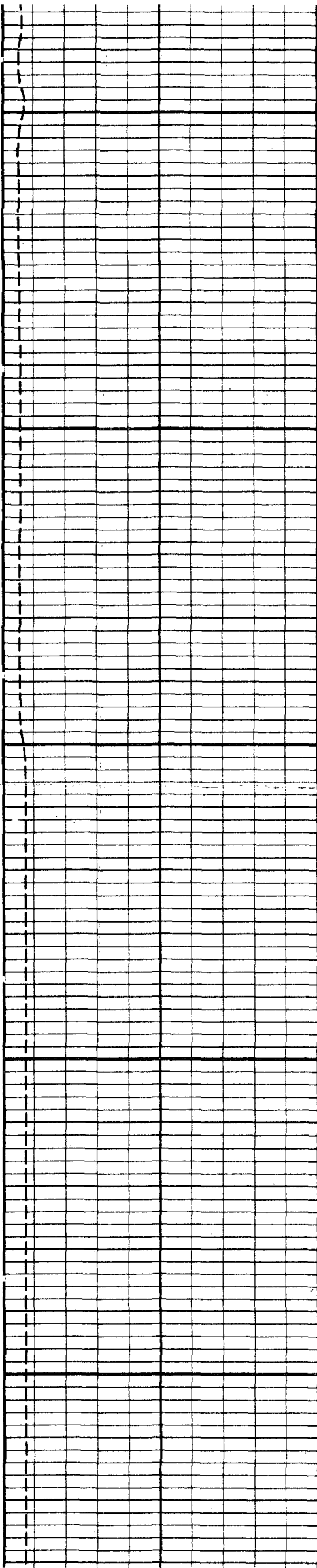




1800

1900

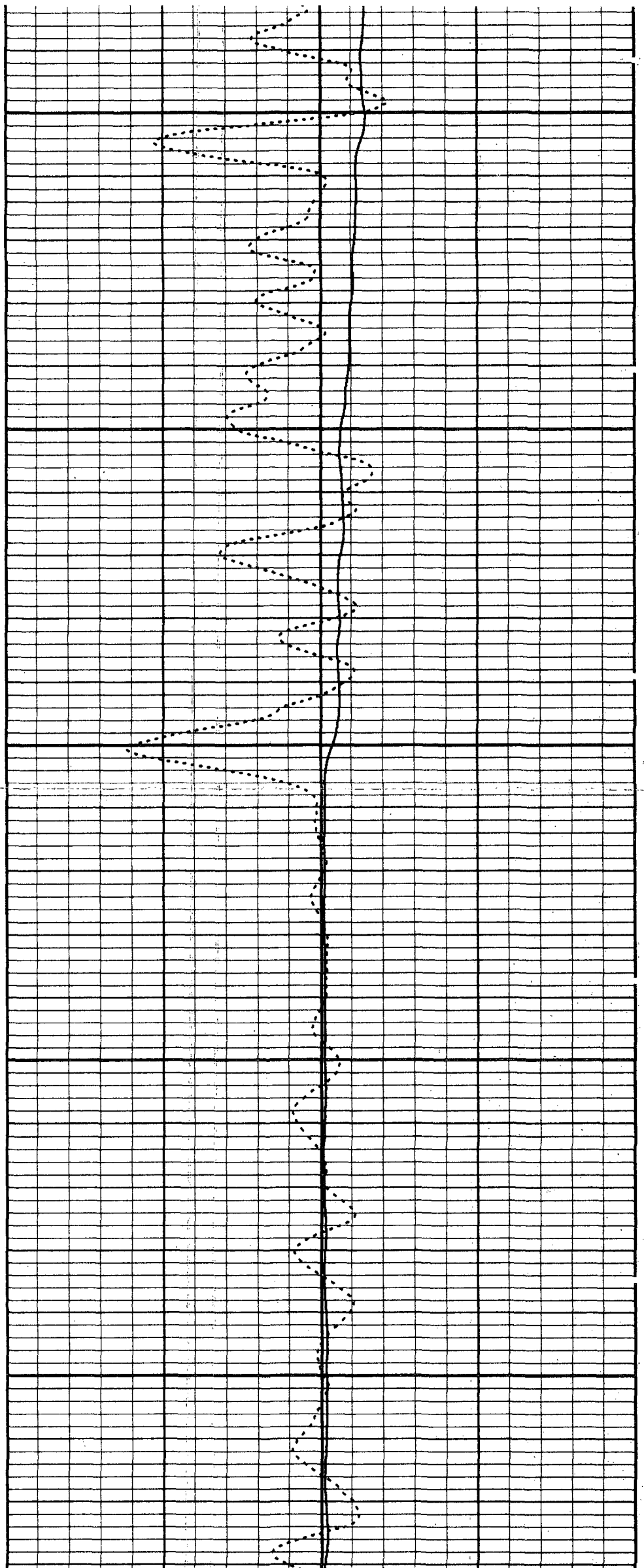


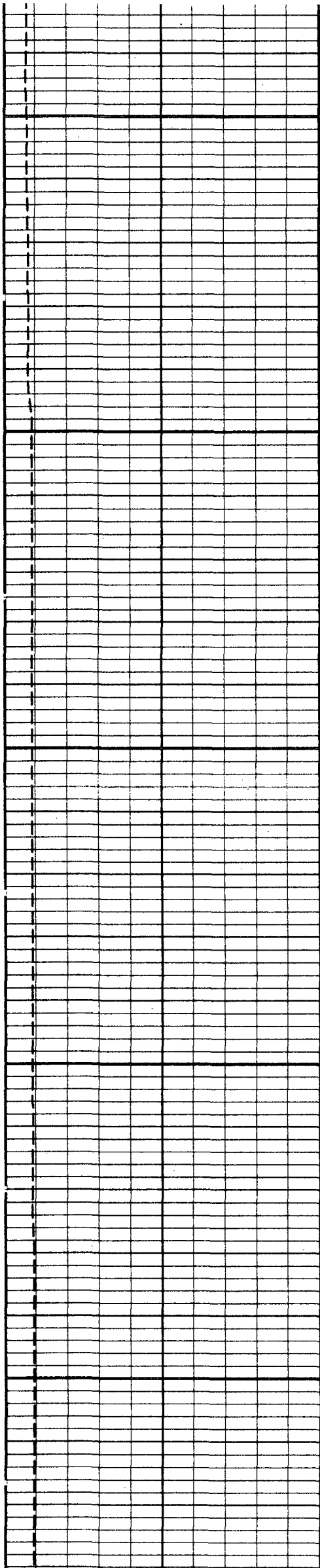


2000

2100

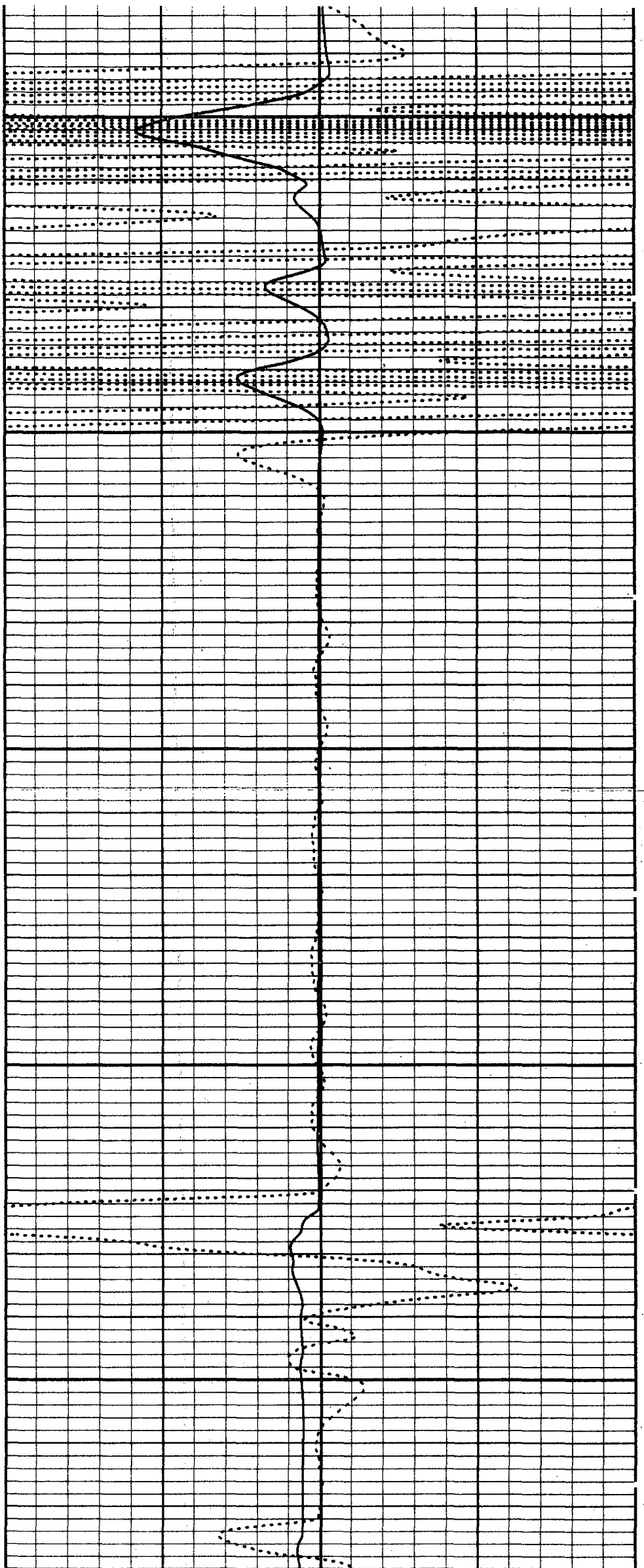
2200

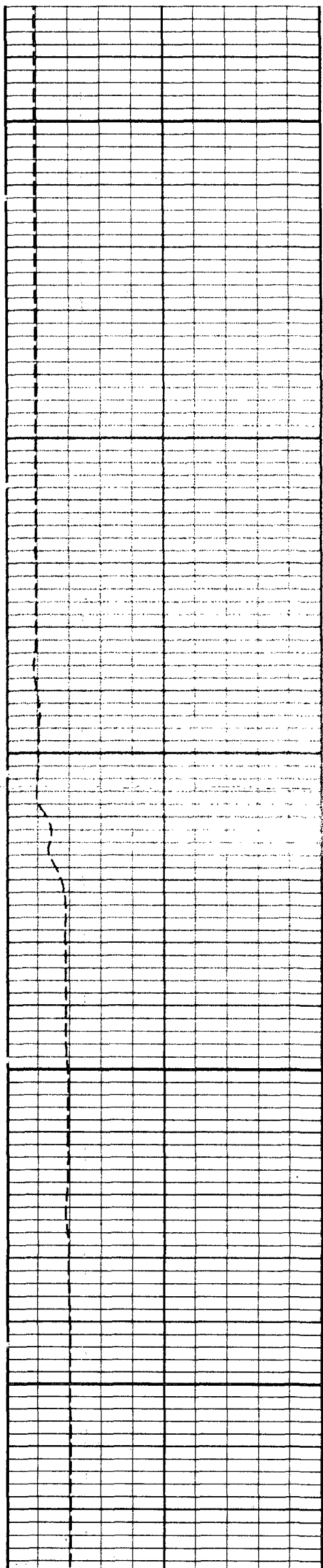




2300

2400

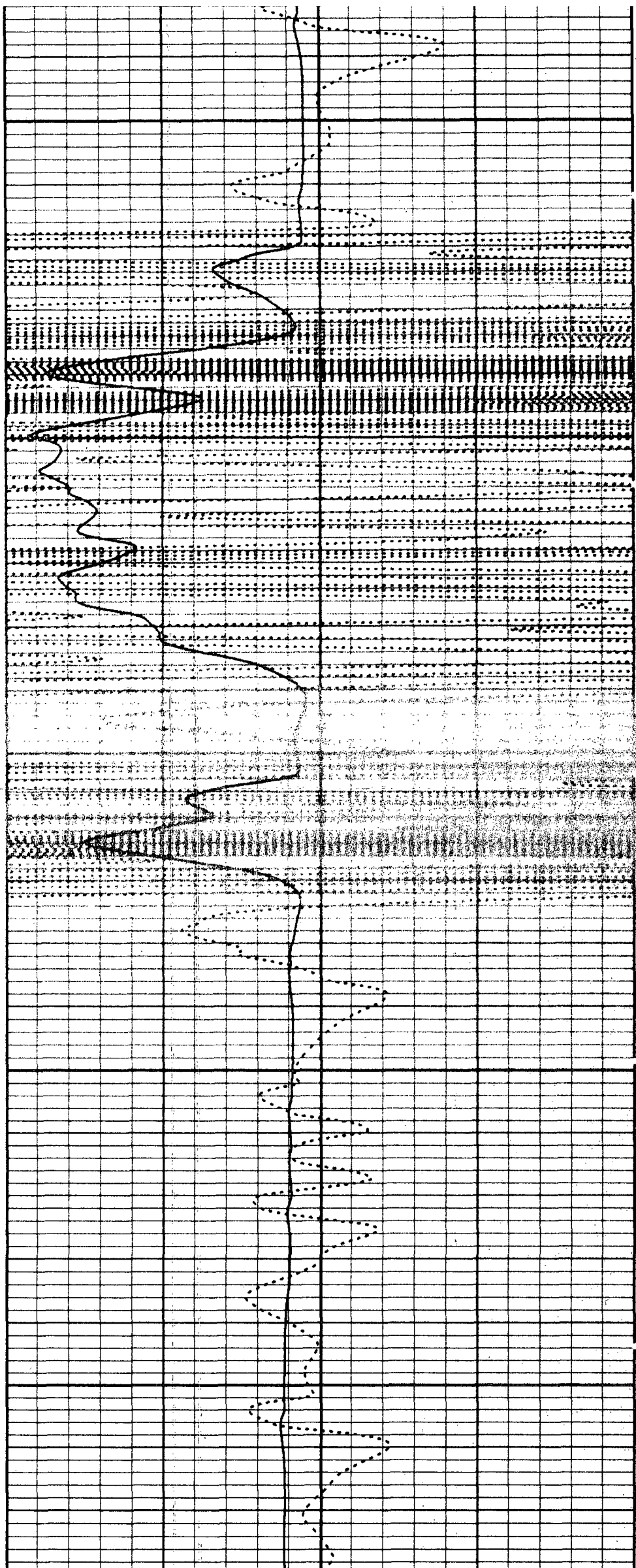


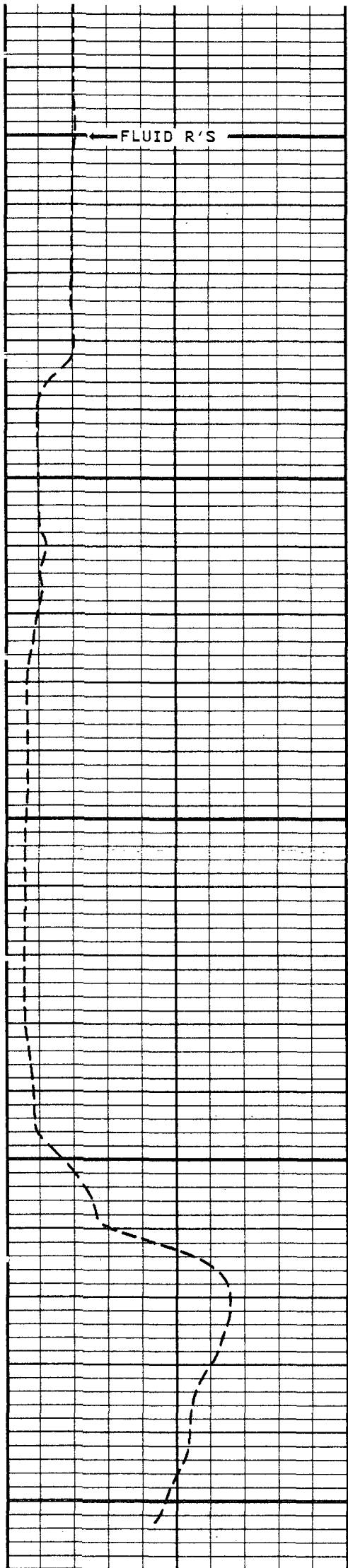


2500

2600

2700

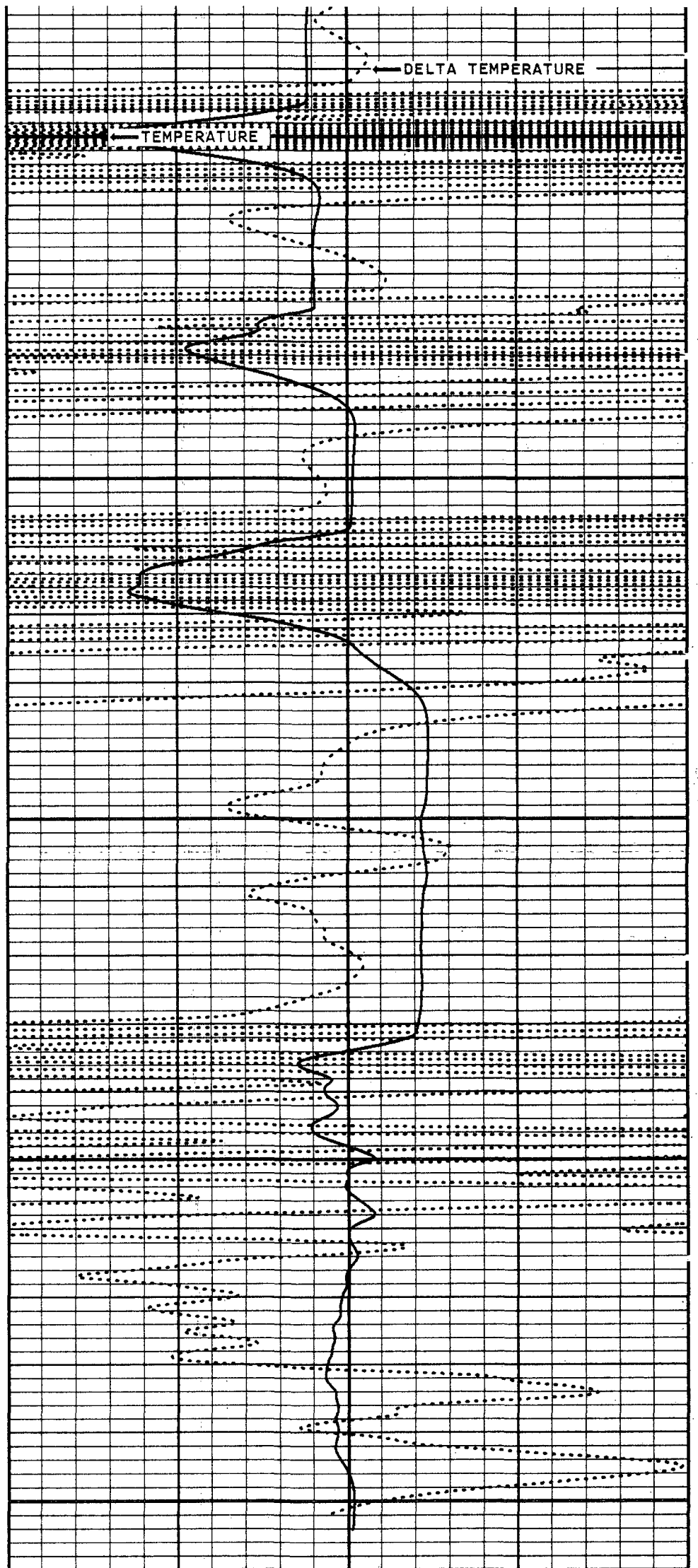




FL-RES
0.00 OHMS 10.00

2800

2900



TEMPERATURE
70 DEGREES 110

DELTA TEMPERATURE
-1.0 1.0

FLUID R'S

TEMPERATURE

DELTA TEMPERATURE

START DEPTH: 1595.9 FEET DIRECTION: DOWN DATE: 03/06/96 TIME: 10:44:23 MODE: TRACE PLAYBACK

EPIW210FRM

MAIN PASS

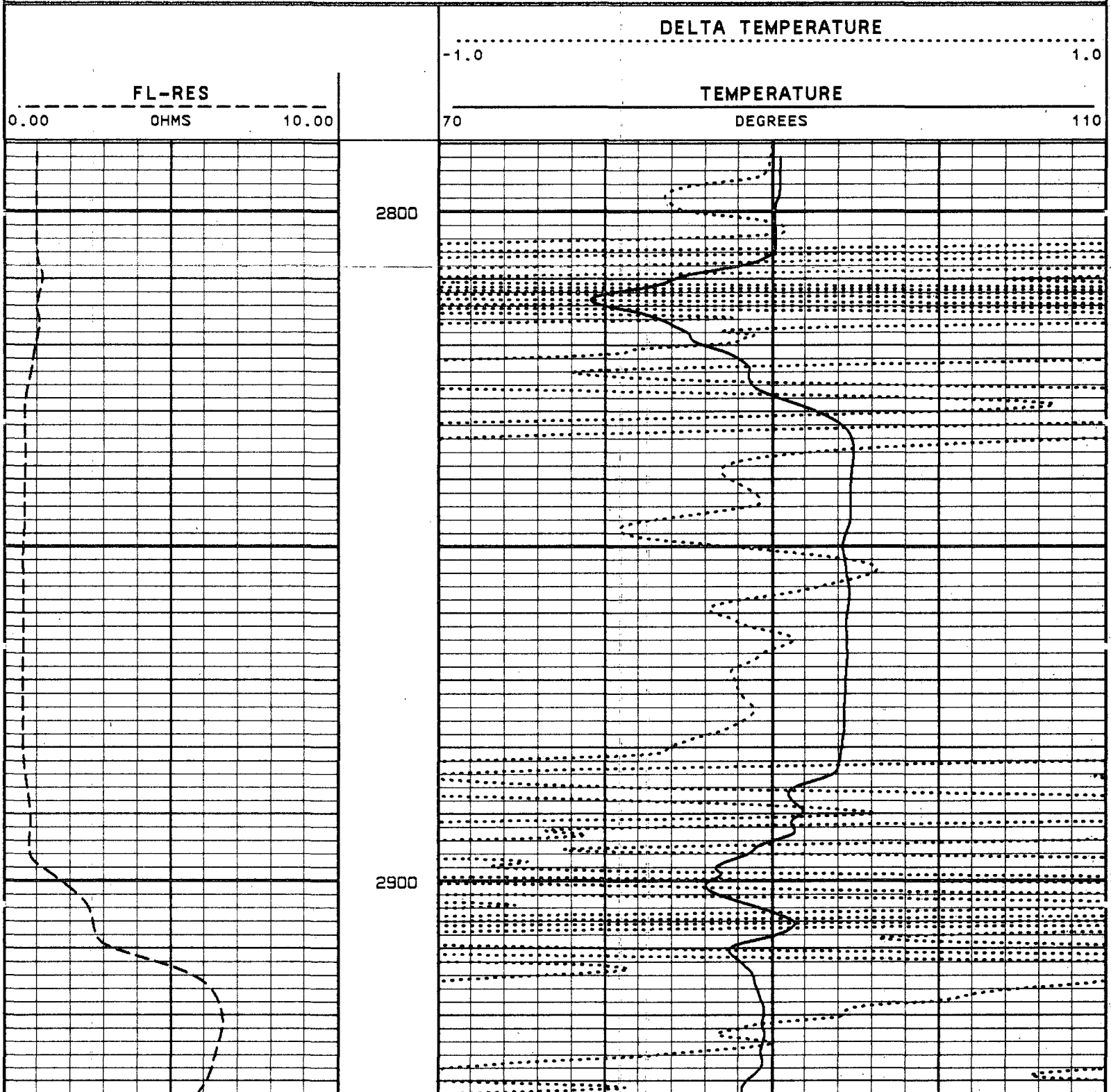
VERSION: 2.26

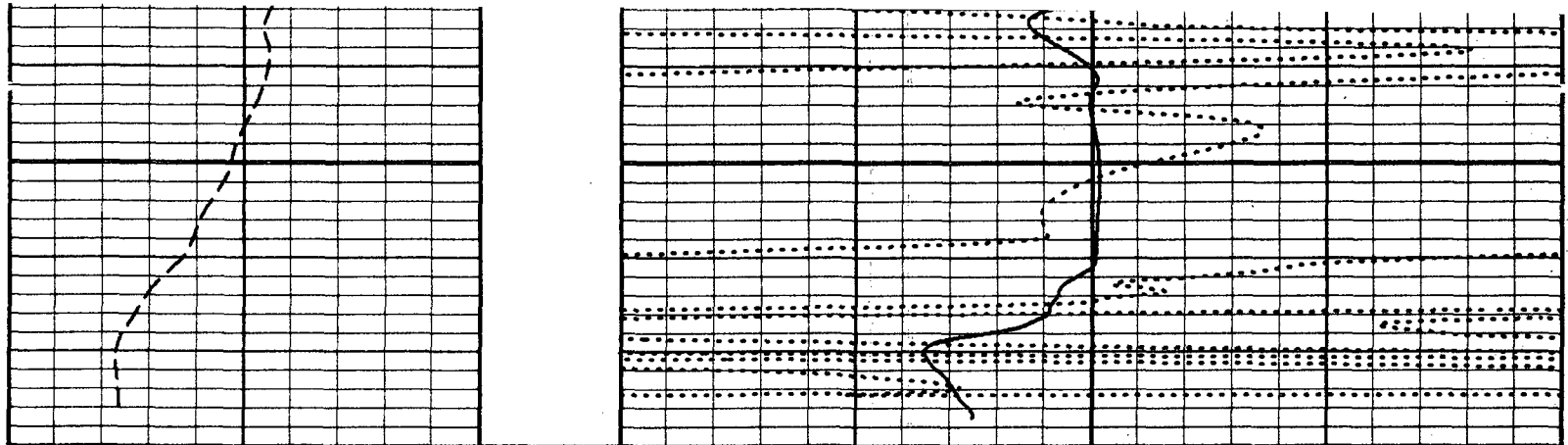
VERSION: 2.26

REPEAT SECTION

EPIW210FRR

FINISH DEPTH: 2980.7 FEET DIRECTION: DOWN DATE: 03/06/96 TIME: 11:23:29 MODE: TRACE PLAYBACK





FL-RES
0.00 OHMS 10.00

TEMPERATURE
70 DEGREES 110

DELTA TEMPERATURE
-1.0 1.0

START DEPTH: 2795.3 FEET DIRECTION: DOWN DATE: 03/06/96 TIME: 11:17:46 MODE: TRACE PLAYBACK
EPIW210FRR

REPEAT SECTION

VERSION: 2.26

MASTER CALIBRATION SUMMARY

FILE: DATE: 03/06/96 TIME: 11:28 VERSION: 2.26

TEMPERATURE TOOL #30

DATE: 03/10/95 TIME: 15:29

	MEASURED	UNITS	STANDARD	MINIMUM	MAXIMUM	DEVIATION	UNITS
ZERO	288.3	CPS	69.6	69.3	69.8	0.14	DEGF
PLUS	456.9	CPS	103.6	102.9	104.5	0.29	DEGF

FL-RES TOOL #30

DATE: 05/04/95 TIME: 15:50

	MEASURED	UNITS	STANDARD	MINIMUM	MAXIMUM	DEVIATION	UNITS
SONDEX 50000 MMHOS	9560.0	CPS	0.20	0.20	0.20	0.000	OHMS
SONDEX 25000 MMHOS	5050.0	CPS	0.40	0.40	0.40	0.000	OHMS
SONDEX 10000 MMHOS	2060.0	CPS	1.00	1.00	1.00	0.000	OHMS
SONDEX 2000 MMHOS	410.0	CPS	5.00	20.00	20.00	0.000	OHMS
SONDEX 500 MMHOS	99.0	CPS	20.00	20.00	20.00	0.000	OHMS

COMPANY CHARLOTTE COUNTY UTILITIES

WELL EAST PORT WRF I.W. #2

FTFID EAST PORT STATE FLORIDA

