

FLORIDA

GEOPHYSICAL LOGGING, INC.

**HIGH RESOLUTION
TEMPERATURE
SURVEY**

FILE NO. UCOB-254545

COMPANY CHARLOTTE COUNTY UTILITIES

WELL EAST PORT WRF I.W. #2

FIELD EAST PORT

COUNTY CHARLOTTE STATE FLORIDA

LOCATION
LAT. 26 DEG. 58' 26" N
LONG. 82 DEG. 02' 17" W

SEC. 20 TWP. 40S RGE. 23E

OTHER SERVICES:
RTS

PERMANENT DATUM PAD LEVEL (P.L.) ELEV. _____

LOG MEASURED FROM P.L. FT. ABOVE PERMANENT DATUM

DRILLING MEASURED FROM P.L. ELEV.: K.B.
D.F. _____
G.L. _____

DATE 08-APRIL-1996

RUN NO. SIXTEEN

TYPE LOG HRT

DEPTH-DRILLER 3245'

DEPTH-LOGGER 3245'

LOGGED INTERVAL 3245' TO 20'

OPERATING RIG TIME 1 HOUR

TYPE FLUID IN HOLE WATER

SALINITY, PPM CL N/A

DENSITY-VISCOSITY N/A

LEVEL FULL

MAX. REC. TEMP. DEG F. 91 DEGF

EQUIPMENT-LOCATION 102 - MIAMI

RECORDED BY WILLIAMS/GRISSOM

WITNESSED BY GORDON KENNEDY

BOREHOLE RECORD				CASING RECORD			
RUN NO.	BIT	FROM	TO	SIZE	WGT.	FROM	TO
	12 1/4"	2803'	SURFACE	38"	.5" MT.	393'	SURFACE
NINE	8 7/8"	2815'	2803'	30"	.5" MT.	1638'	SURFACE
TEN	12.25"	2970	CASING	20"	.5" MT.	2965'	SURFACE
16	18 1/2"	3245	CASING				

ALL INTERPRETATIONS ARE OPINIONS BASED ON INFERENCES FROM ELECTRICAL OR OTHER MEASUREMENTS AND WE CANNOT AND DO NOT GUARANTEE THE ACCURACY OR CORRECTNESS OF ANY INTERPRETATION, AND WE SHALL NOT, EXCEPT IN THE CASE OF GROSS OR WILLFULL NEGLIGENCE ON OUR PART, BE LIABLE OR RESPONSIBLE FOR ANY LOSS, COSTS, DAMAGES, OR EXPENSES INCURRED OR SUSTAINED BY ANYONE RESULTING FROM ANY INTERPRETATION MADE BY ANY OF OUR OFFICERS, AGENTS OR EMPLOYEES. THESE INTERPRETATIONS ARE ALSO SUBJECT TO OUR GENERAL TERMS AND CONDITIONS SET OUT IN OUR CURRENT PRICE SCHEDULE.

REMARKS

RADIOACTIVE TRACER/TEMPERATURE TOOL STRING CONFIGURATION

-- RADIOACTIVE TRACER/TEMPERATURE TOOL

-- UPPER GR -- 23.5 FT. FROM BOT

-- TOTAL TOOL STRING LENGTH = 27.5 FT.--

-- EJECTOR PORT -- 13.5 FT. FROM BOT

-- MIDDLE GR -- 11 FT. FROM BOT

-- CCL -- 9.5 FT. FROM BOT

-- LOWER GR -- 1 FT. FROM BOT

-- BOT -- TEMPERATURE MEASURE POINT

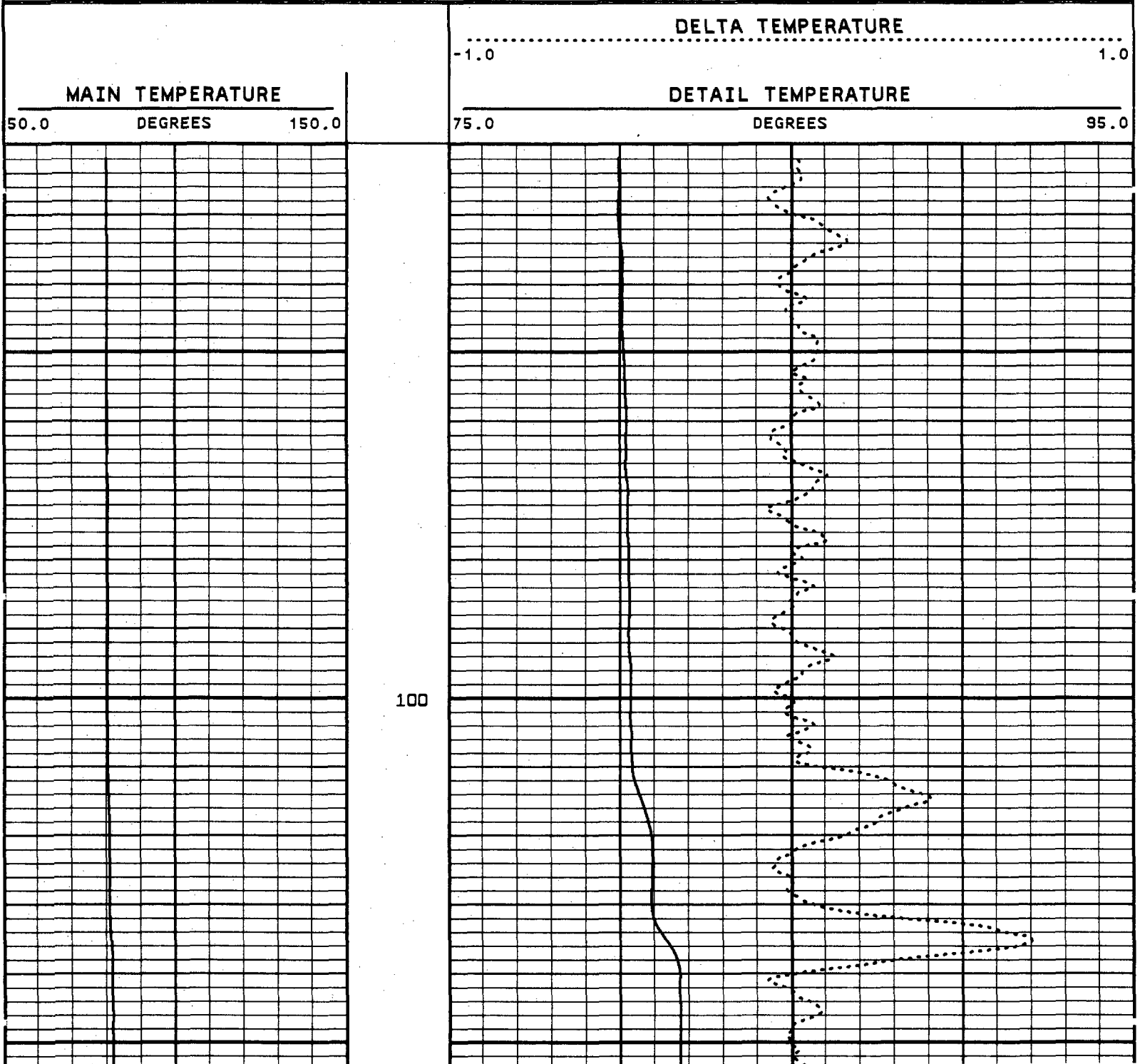
REMARKS

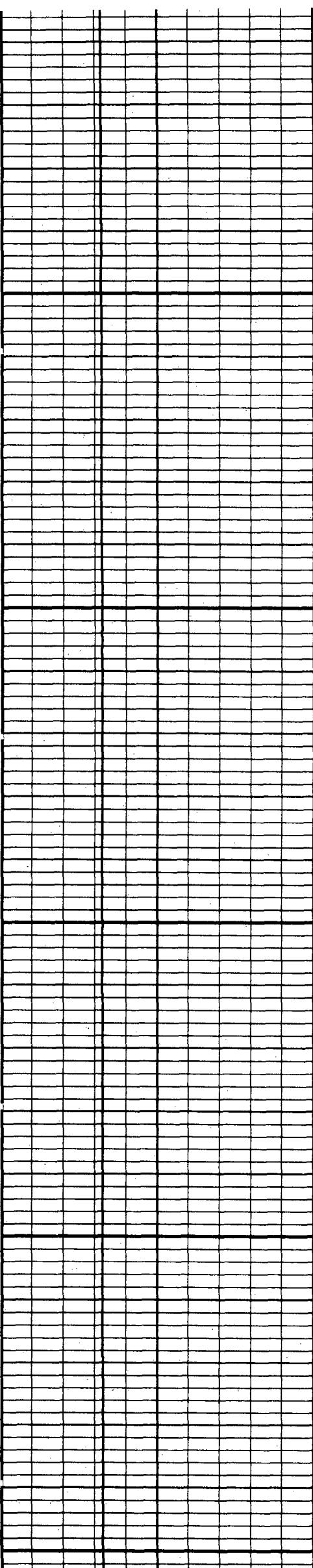
LOGGED GOING DOWN

VERSION: 2.26

EPIW216TEM

FINISH DEPTH: 1784.1 FEET DIRECTION: DOWN DATE: 04/08/96 TIME: 08:29:48 MODE: TRACE PLAYBACK

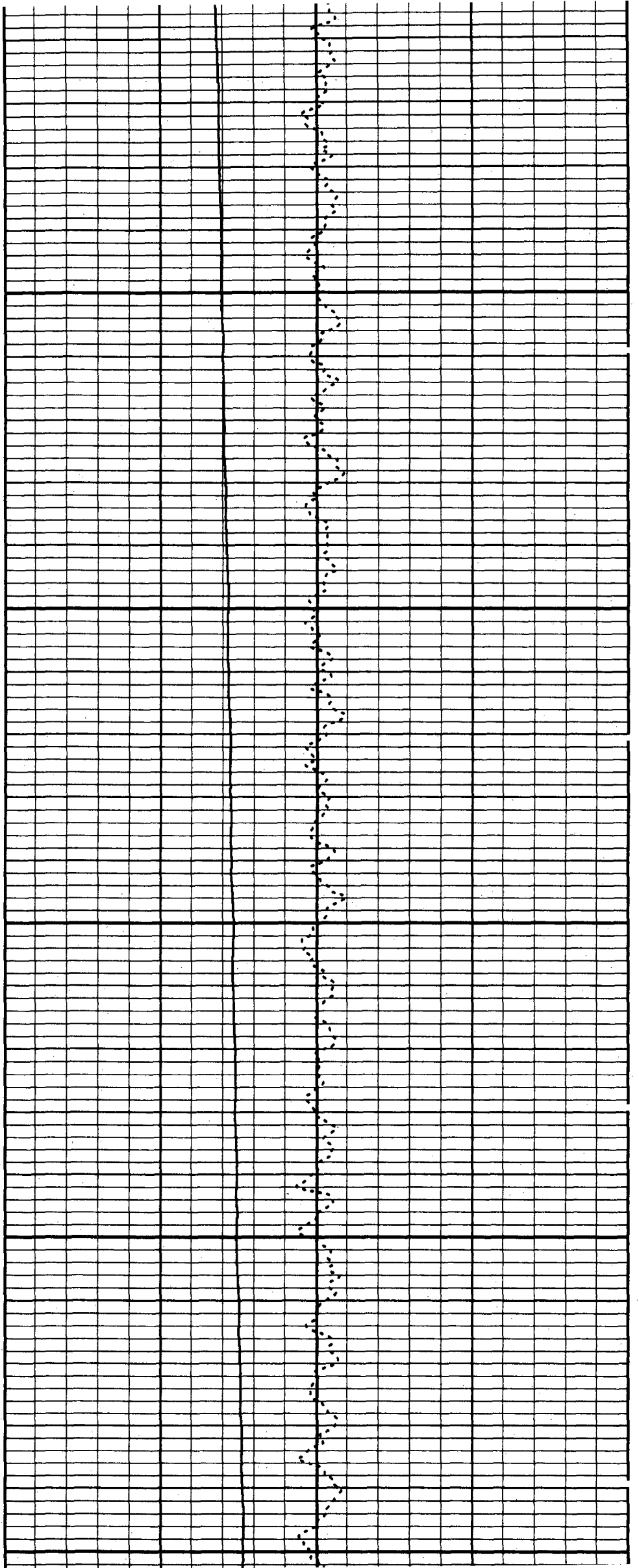


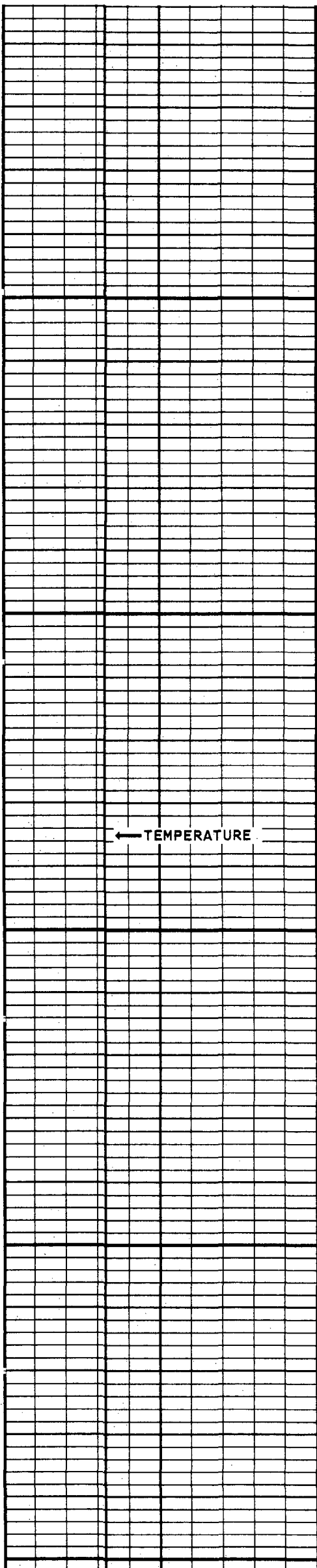


200

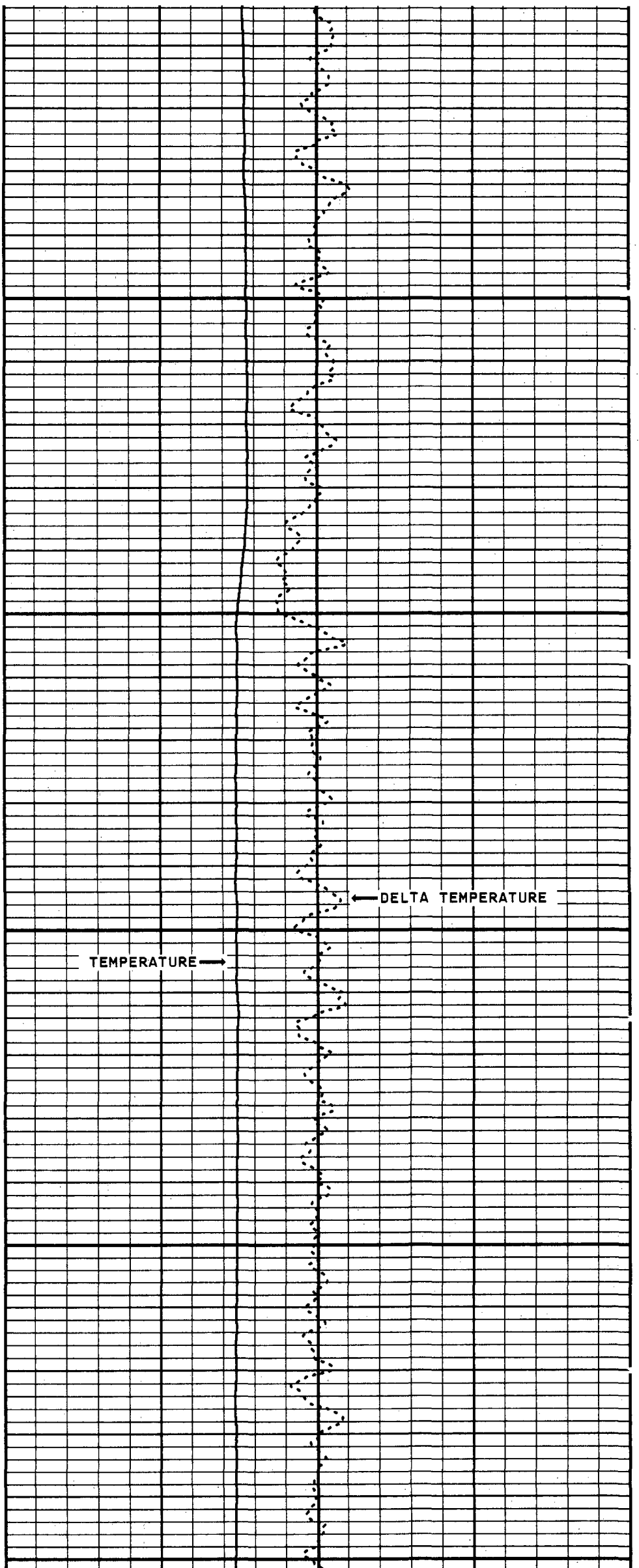
300

400

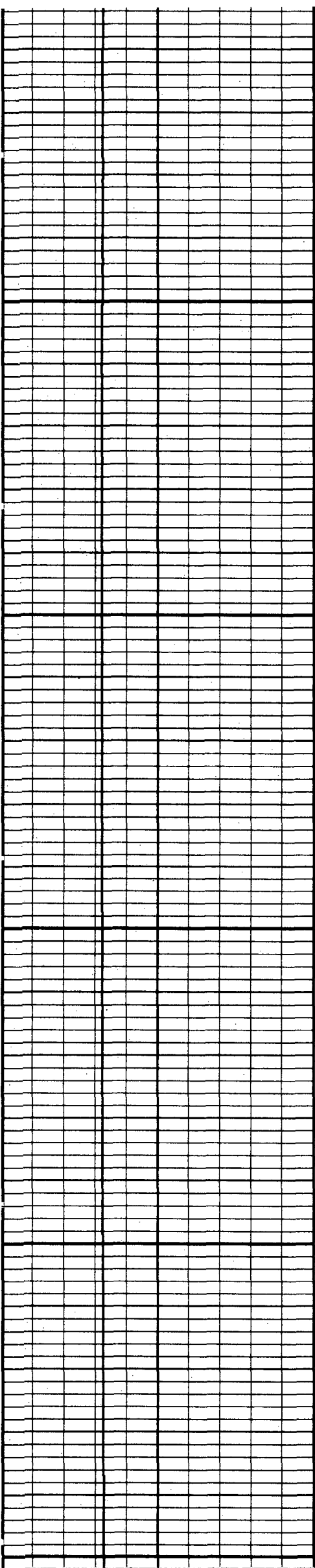




500



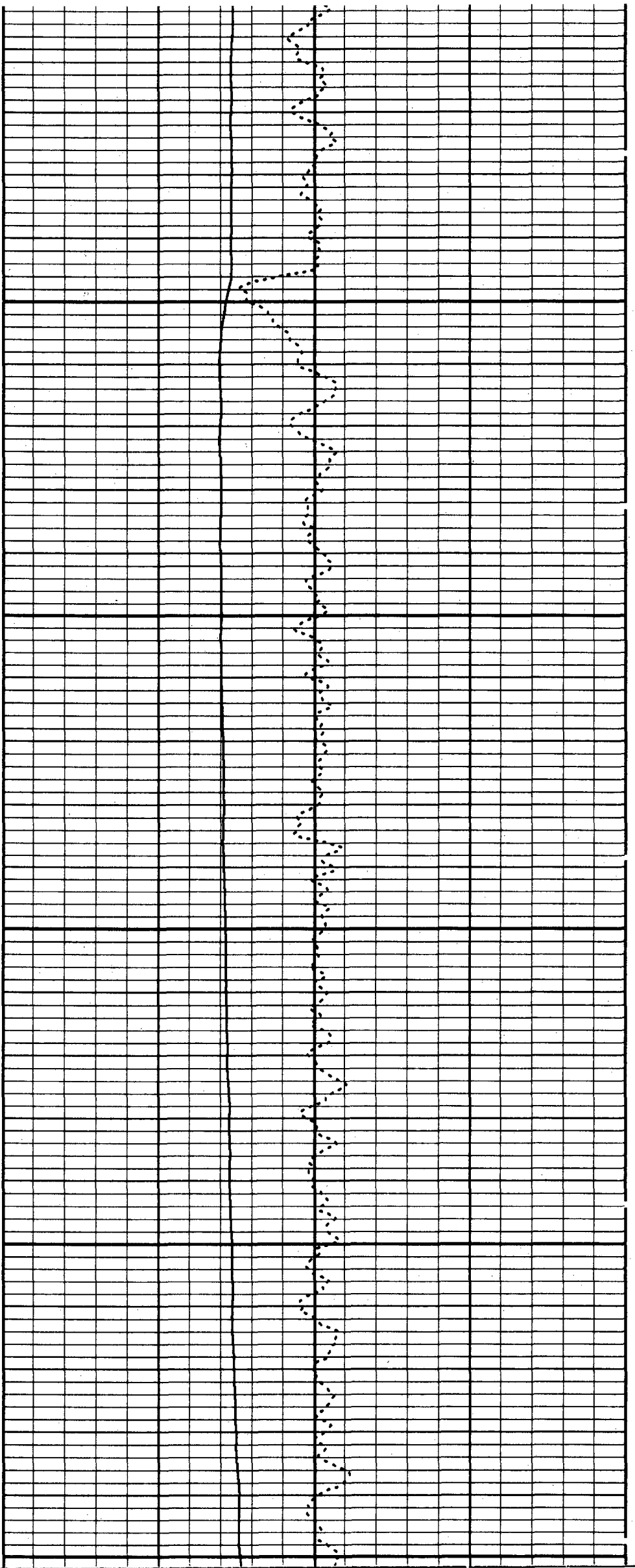
600

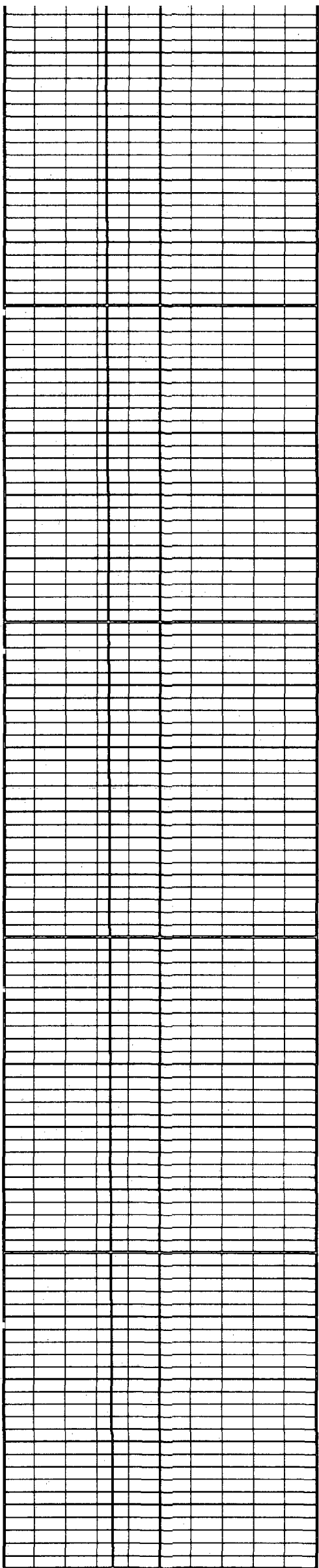


700

800

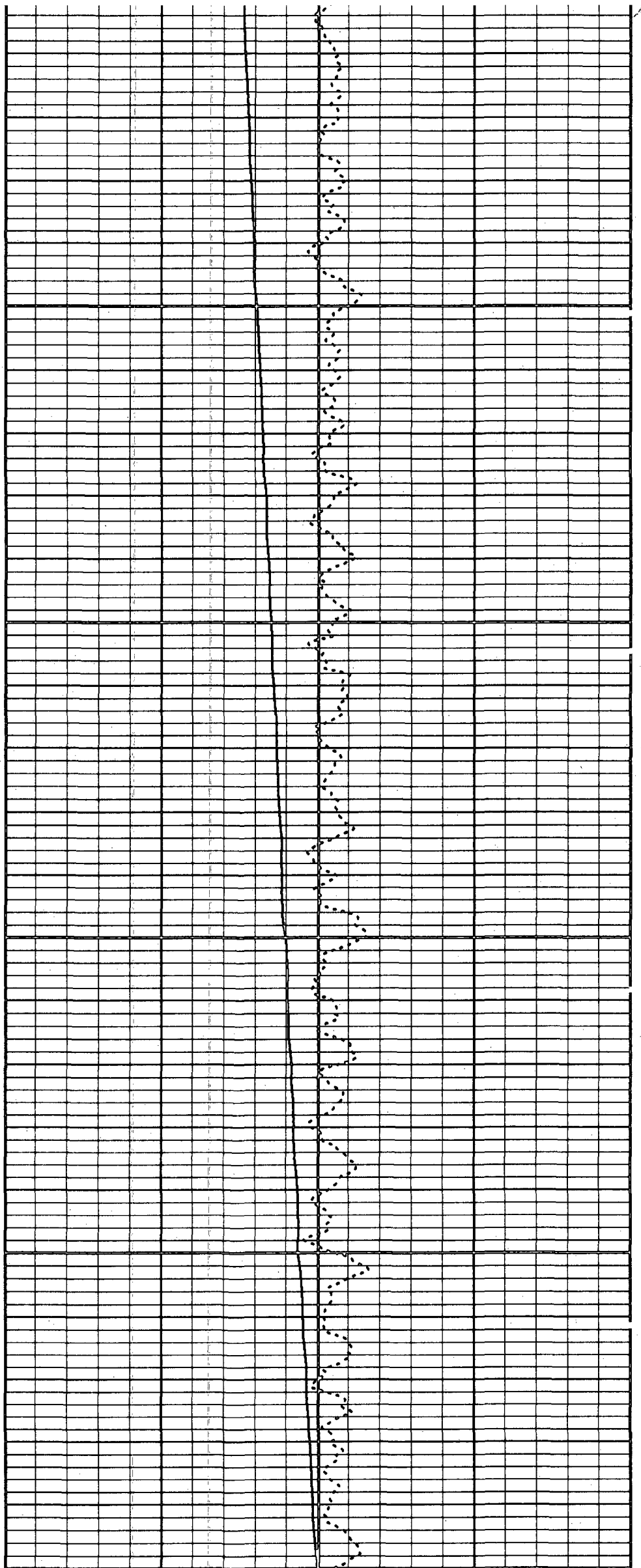
900

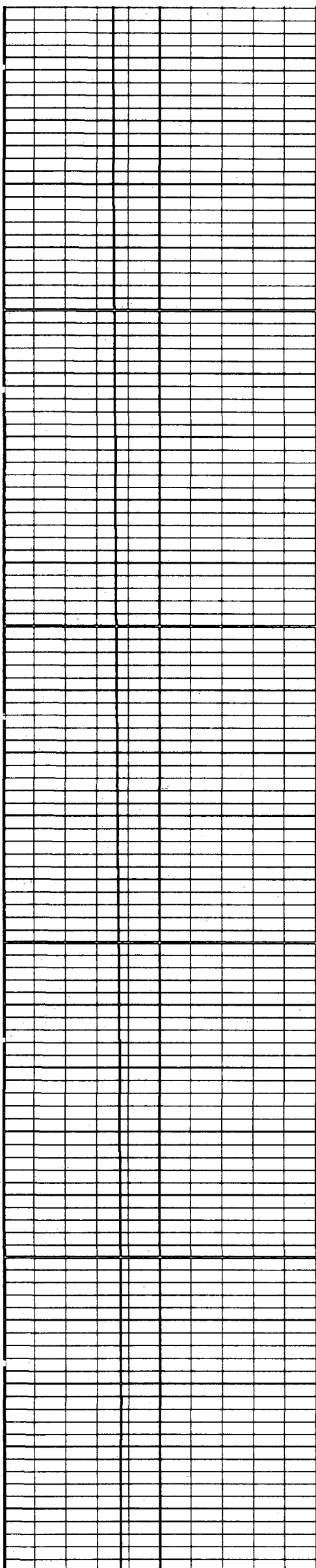




1000

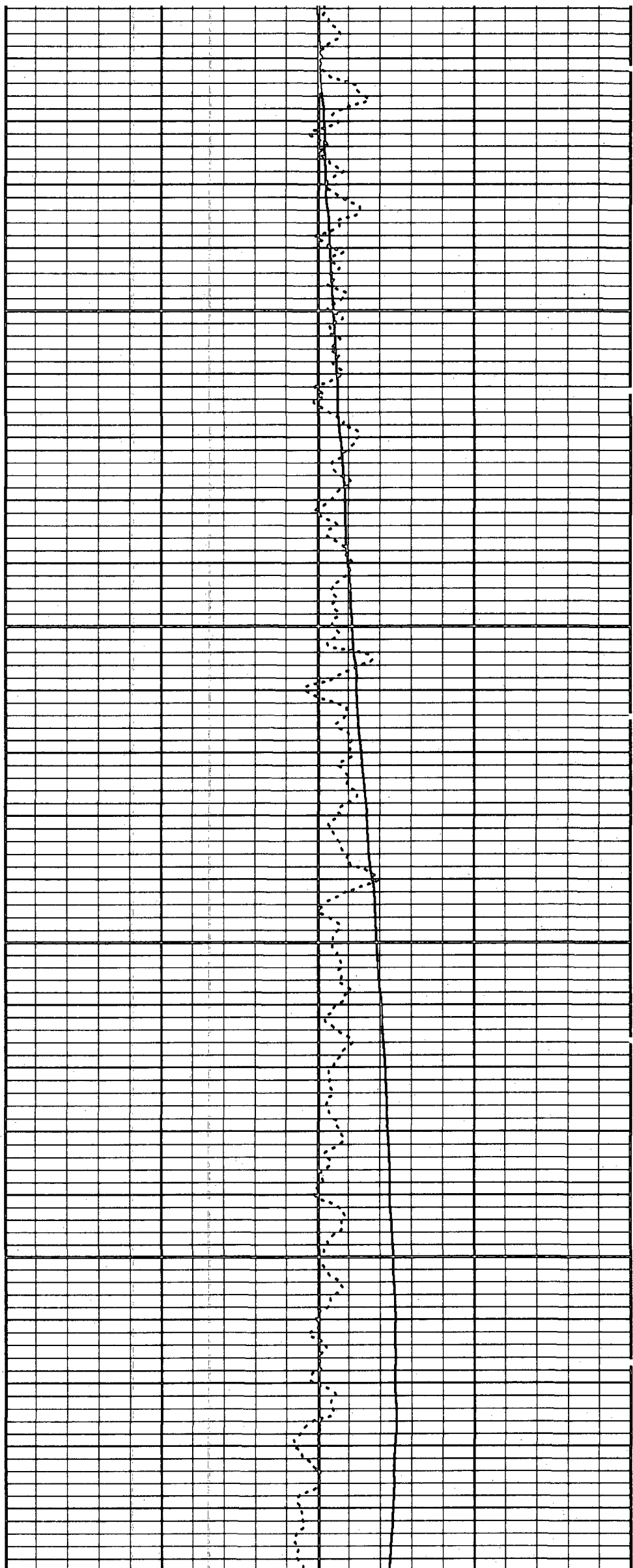
1100

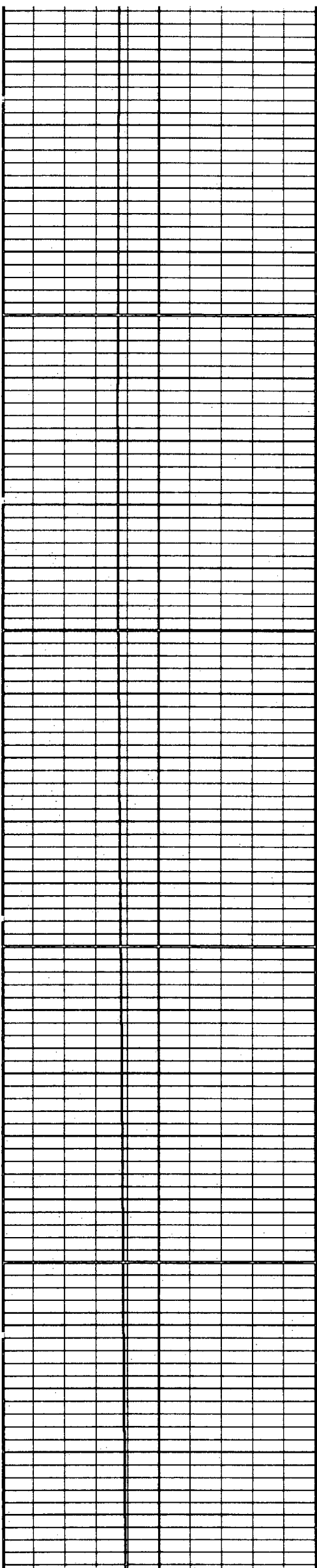




1200

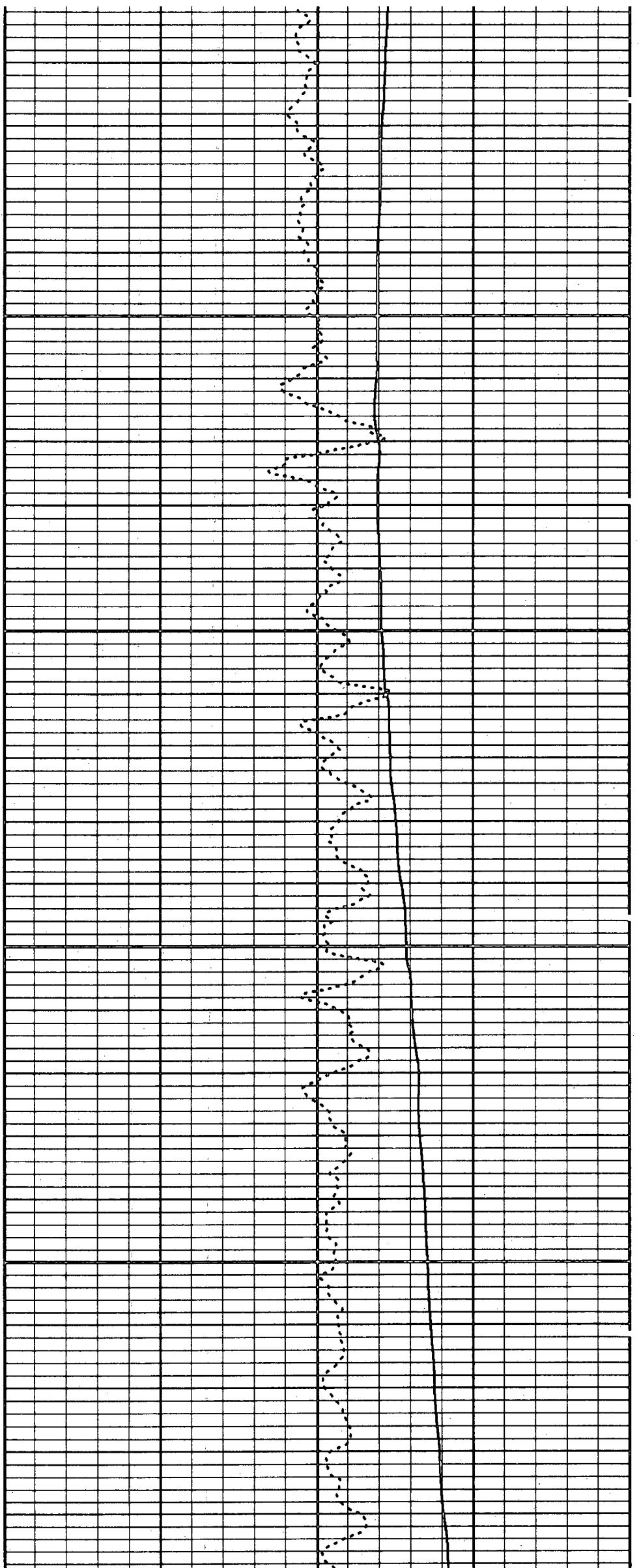
1300

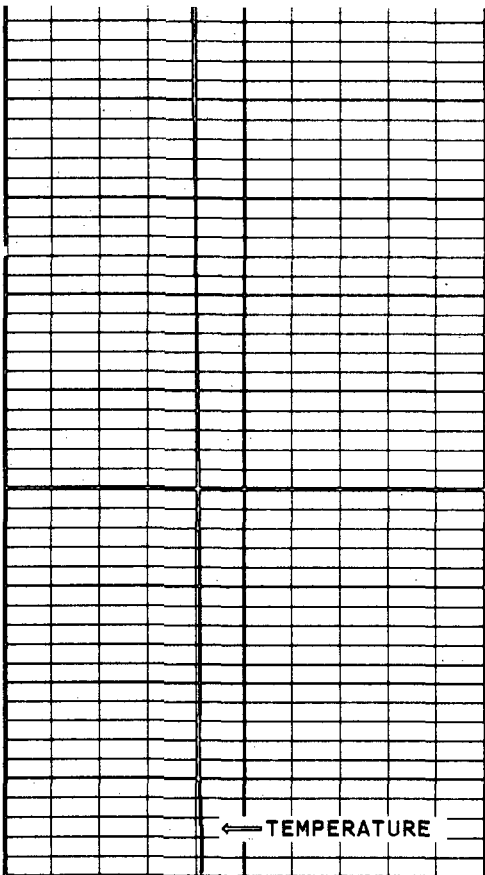




1500

1600



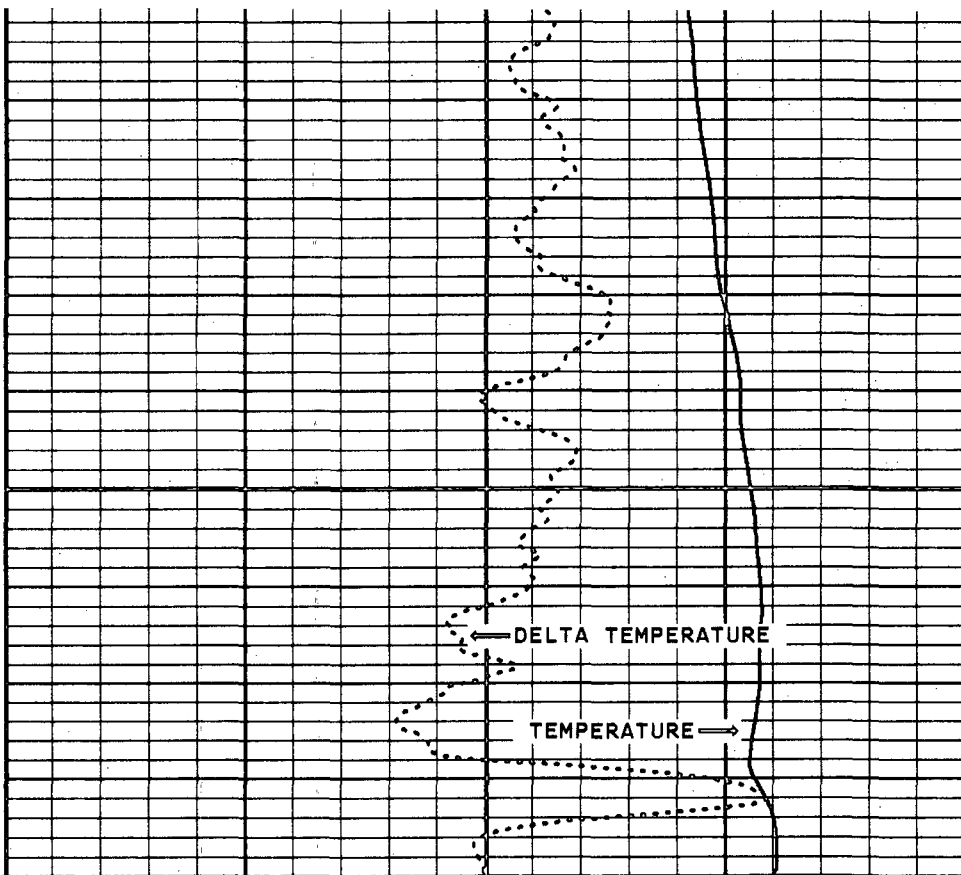


← TEMPERATURE

MAIN TEMPERATURE

50.0 DEGREES 150.0

1700



← DELTA TEMPERATURE

→ TEMPERATURE

DETAIL TEMPERATURE

75.0 DEGREES 95.0

DELTA TEMPERATURE

-1.0 1.0

START DEPTH: 25.0 FEET DIRECTION: DOWN DATE: 04/08/96 TIME: 07:57:11 MODE: TRACE PLAYBACK

EPIW216TEM

VERSION: 2.26

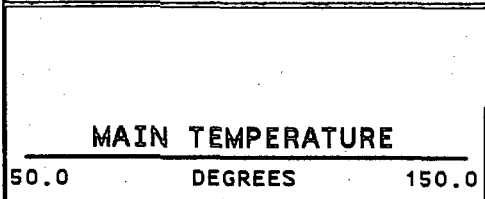
REMARKS

LOGGED GOING DOWN
TEMPERATURE DONE IN TWO PASSES DUE TO TEMPORARY TOOL PROBLEM

VERSION: 2.26

EPIW216TE2

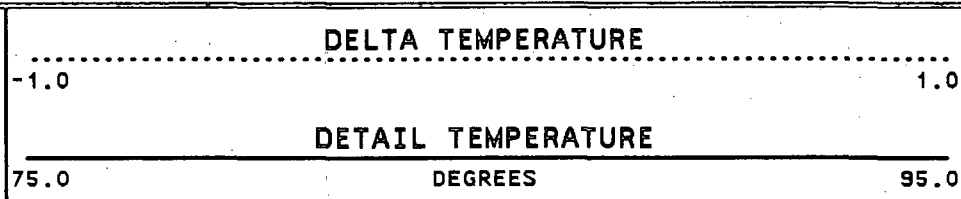
FINISH DEPTH: 3244.2 FEET DIRECTION: DOWN DATE: 04/08/96 TIME: 09:03:26 MODE: TRACE PLAYBACK



MAIN TEMPERATURE

50.0 DEGREES 150.0

← TEMPERATURE



DELTA TEMPERATURE

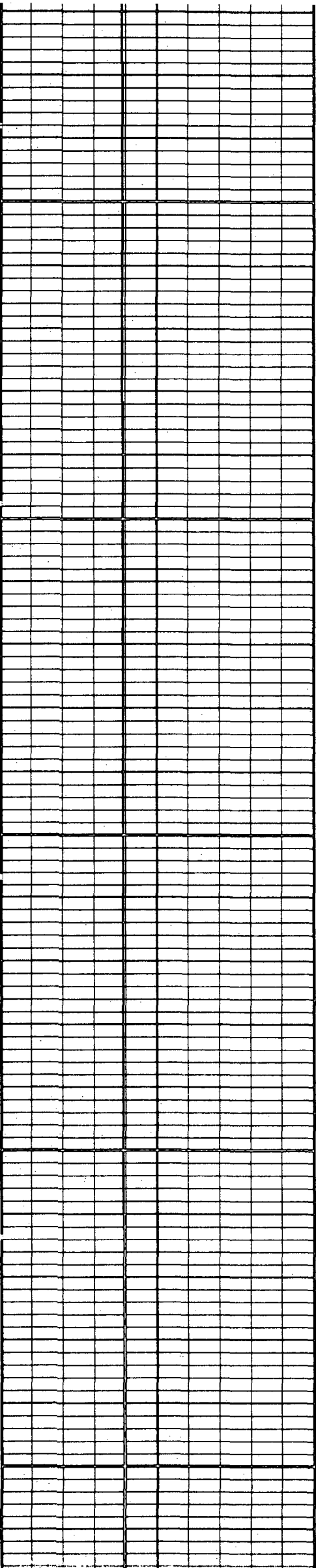
-1.0 1.0

DETAIL TEMPERATURE

75.0 DEGREES 95.0

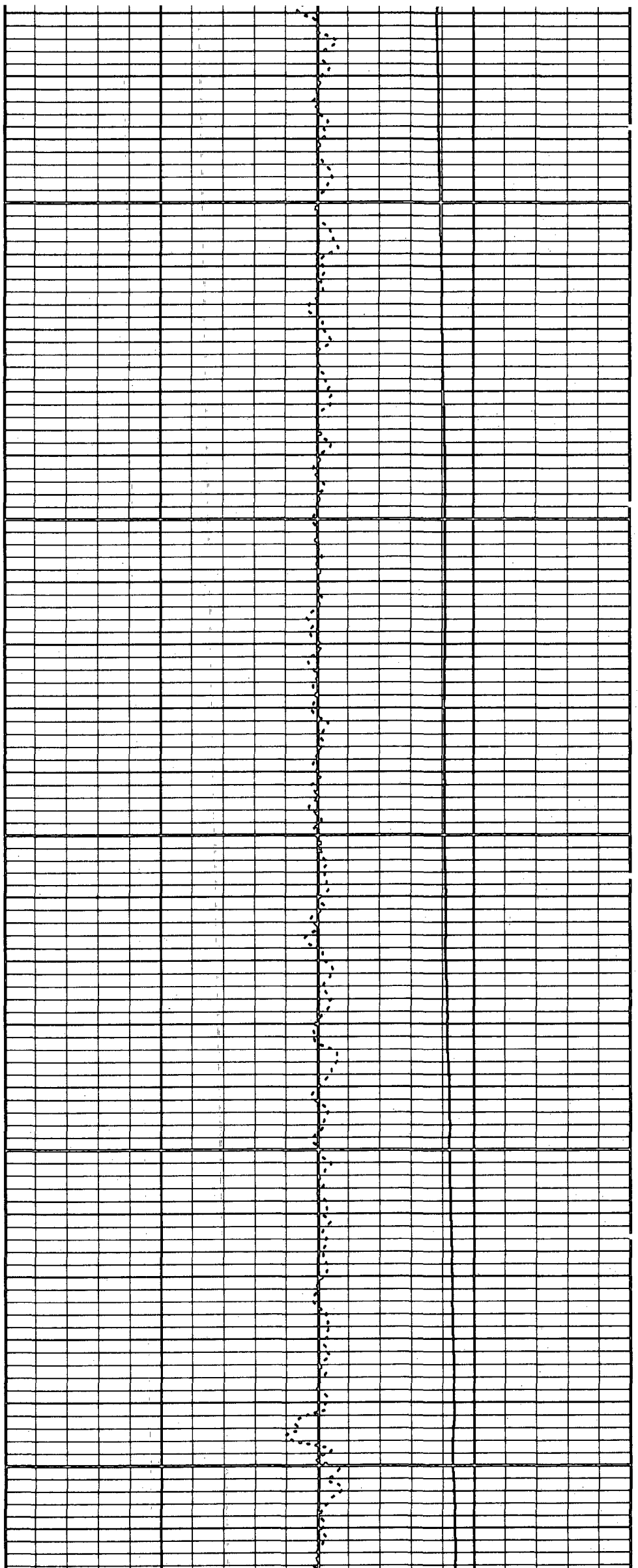
← DELTA TEMPERATURE

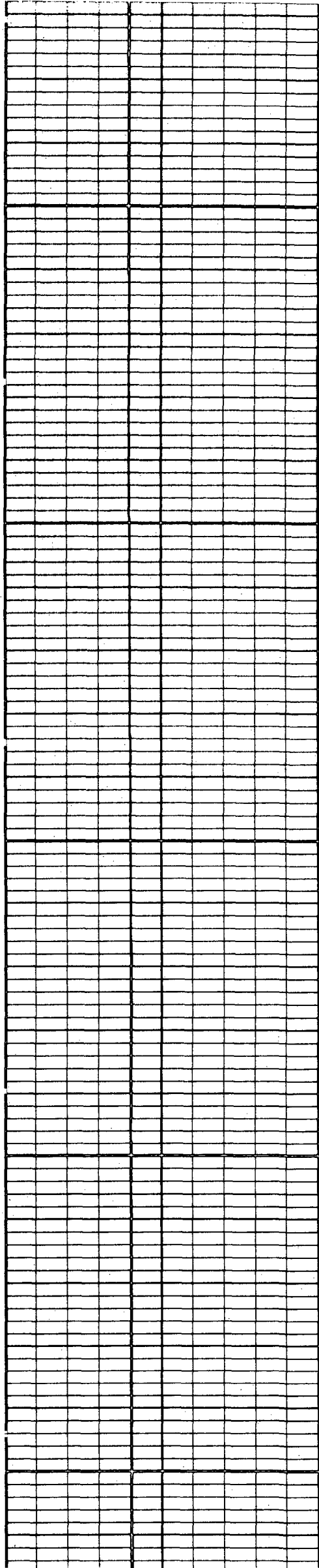
→ TEMPERATURE



2100

2200

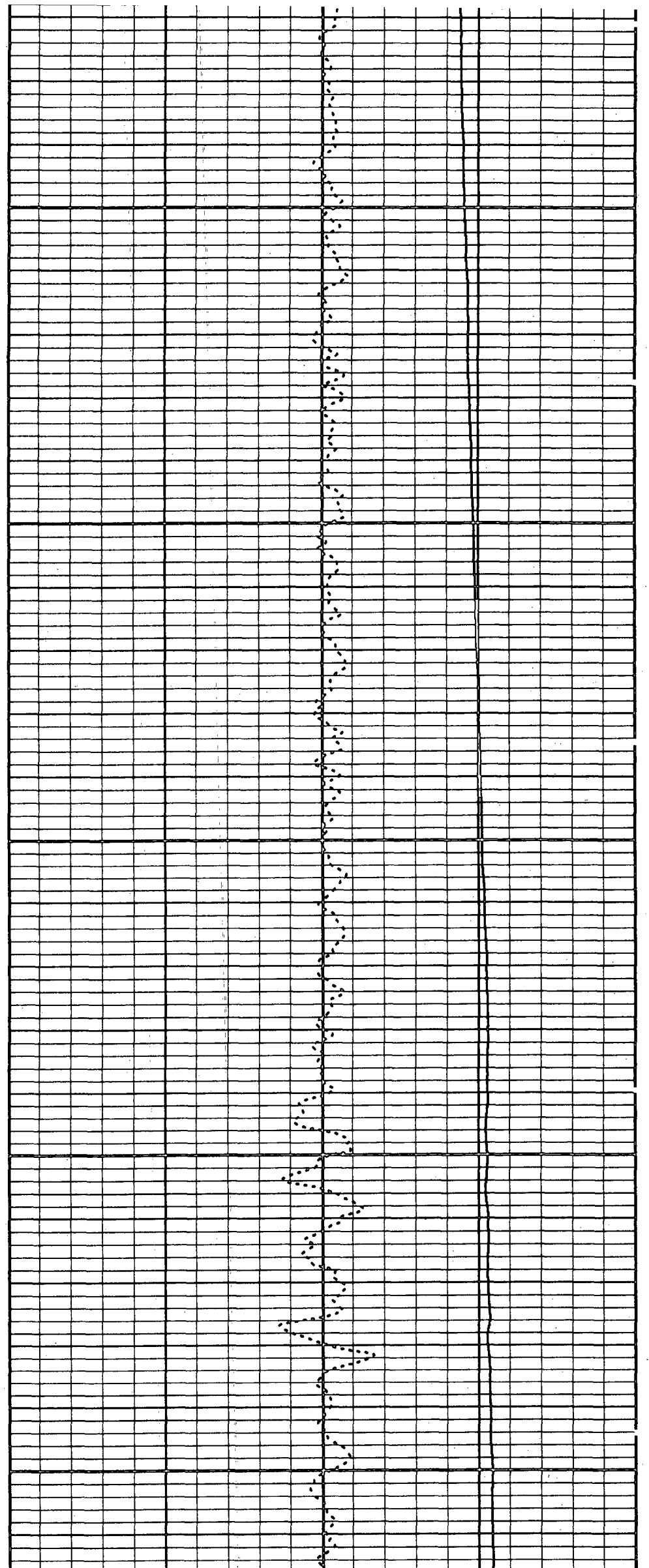


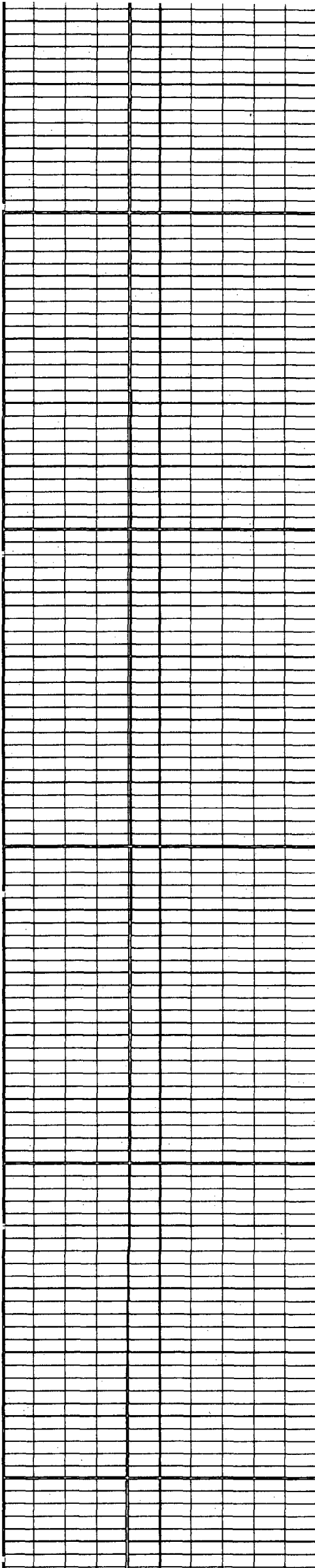


2300

2400

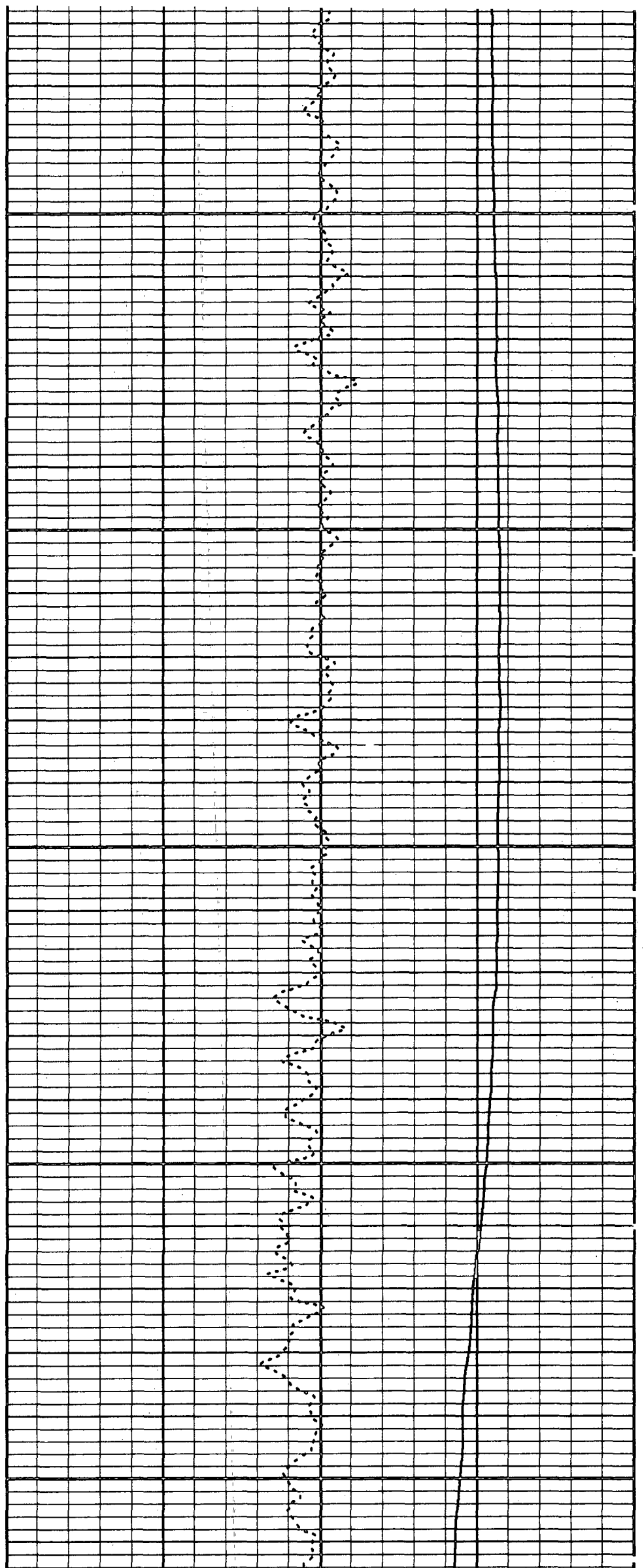
2500

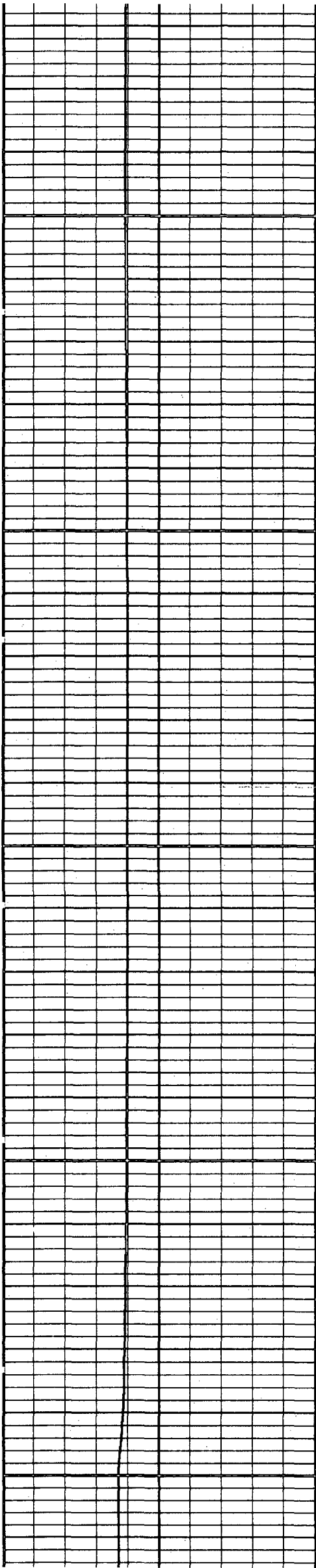




2600

2700

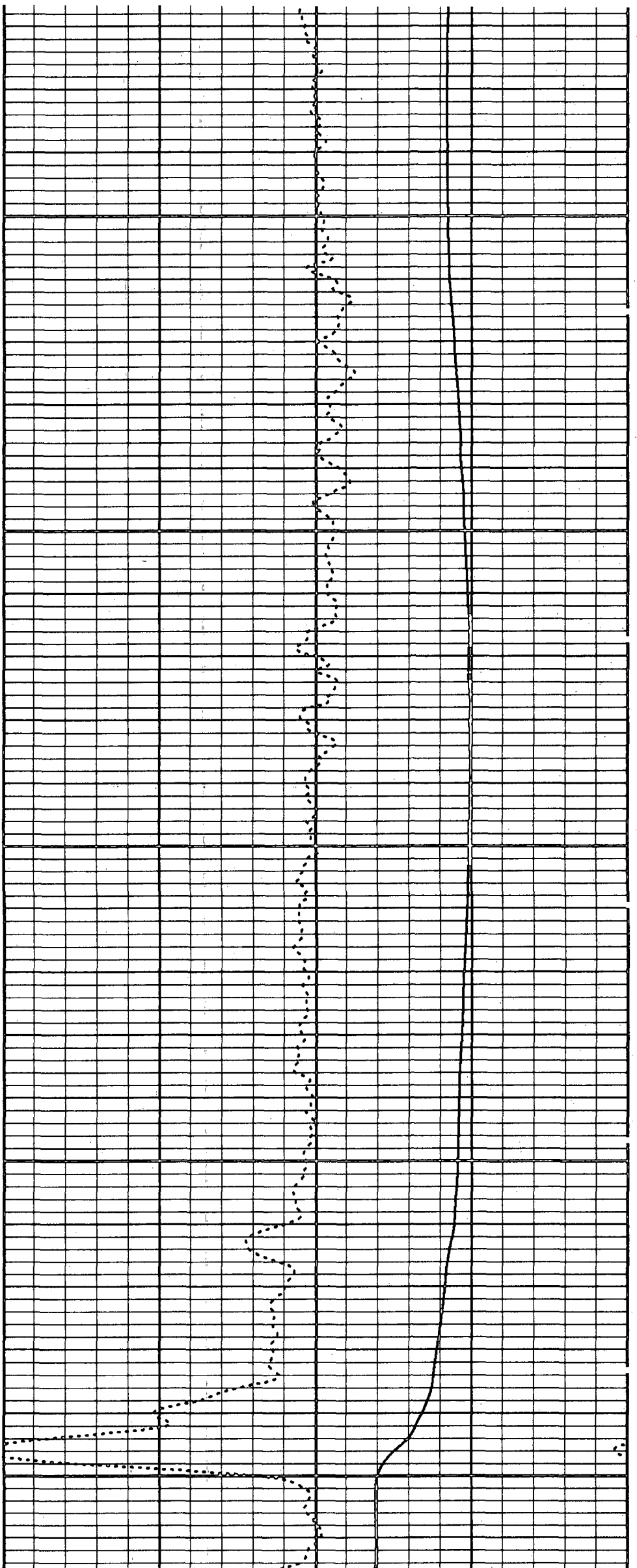


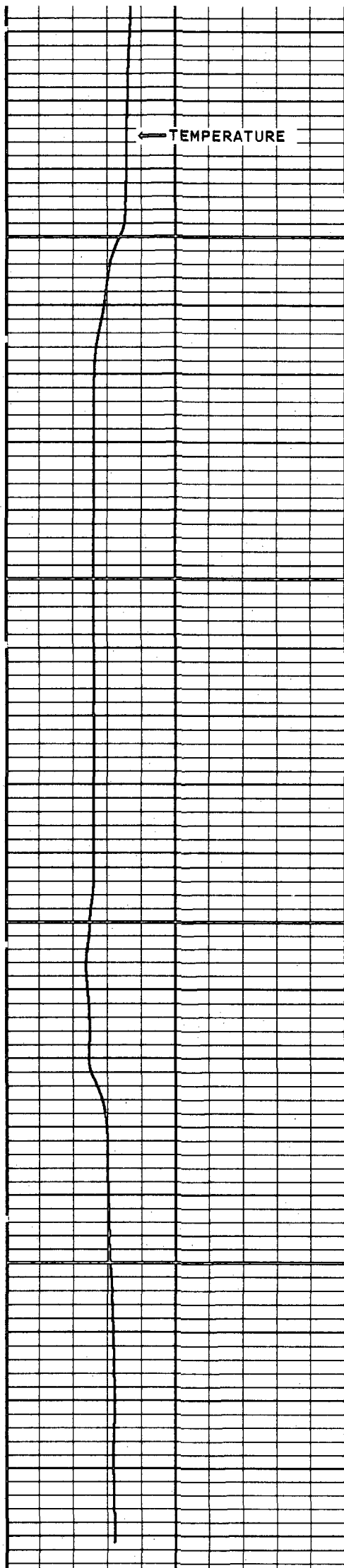


2800

2900

3000

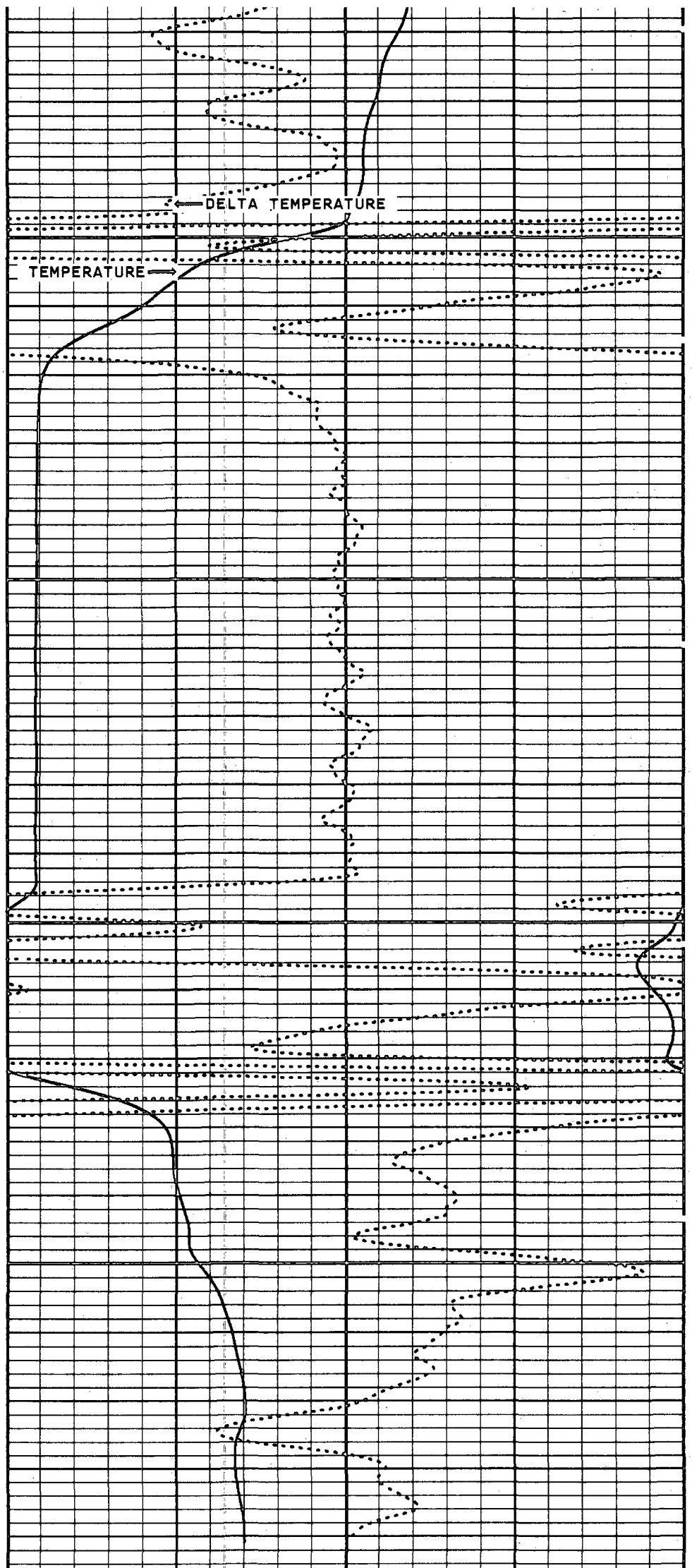




MAIN TEMPERATURE
50.0 DEGREES 150.0

3100

3200



DETAIL TEMPERATURE
75.0 DEGREES 95.0

DELTA TEMPERATURE
-1.0 1.0

START DEPTH: 1730.2 FEET DIRECTION: DOWN DATE: 04/08/96 TIME: 08:32:46 MODE: TRACE PLAYBACK

EPIW216TE2

VERSION: 2.26

MASTER CALIBRATION SUMMARY

FILE: DATE: 04/08/96 TIME: 19:32 VERSION: 2.26

TEMPERATURE #T52

DATE: 04/08/96 TIME: 03:20

	MEASURED	UNITS	STANDARD	MINIMUM	MAXIMUM	DEVIATION	UNITS
ZERO	400.0	CPS	40.0	40.0	40.0	0.00	DEGF
PLUS	1400.0	CPS	140.0	140.0	140.0	0.00	DEGF

COMPANY CHARLOTTE COUNTY UTILITIES

WELL EAST PORT WRF I.W. #2

FIELD EAST PORT STATE FLORIDA

