



**HIGH
RESOLUTION
TEMPERATURE
LOG**

Company **CHARLOTTE COUNTY UTILITIES**
 Well **IW-1**
 Field **EASTPORT W.R.F**
 County **CHARLOTTE** State **FLORIDA**

Location	Permanent Datum	PAD	Elevation	Other Services SEE COMMENTS
	Log Measured From	PAD		
	Drilling Measured From	PAD		

Date	22-OCT-2009	
Run Number	MIT '09	
Depth Driller	3547'	
Depth Logger	3130'	
Bottom Logged Interval	3130'	
Top Log Interval	SURFACE	
Open Hole Size	NA	
Type Fluid	WATER	
Density / Viscosity	NA	
Max. Recorded Temp.	88.1 DEGF.	
Estimated Cement Top	NA	
Time Well Ready	0000	
Time Logger on Bottom	0000	
Equipment Number	VA-203	
Location	JUPTER	
Recorded By	LEE	
Witnessed By	S. DURALL	

Borehole Record		Tubing Record	
Run Number	Bit	From	To

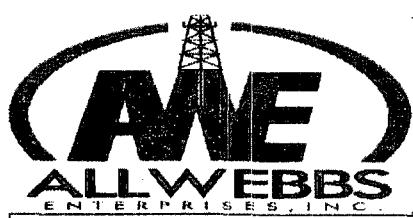
Casing Record	Size	Wd/Ft	Top	Bottom
Surface String	8.625"	.500 W.T	SURFACE	2984.5" LOGGER
Prot. String				
Production String				
Liner				

<< Fold Here >>

All interpretations are opinions based on inferences from electrical or other measurements and we cannot and do not guarantee the accuracy or correctness of any interpretation, and we shall not, except in the case of gross or willful negligence on our part, be liable or responsible for any loss, costs, damages, or expenses incurred or sustained by anyone resulting from any interpretation made by any of our officers, agents or employees. These interpretations are also subject to our general terms and conditions set out in our current Price Schedule.

Comments

RTS
DHTVS



TEMPERATURE

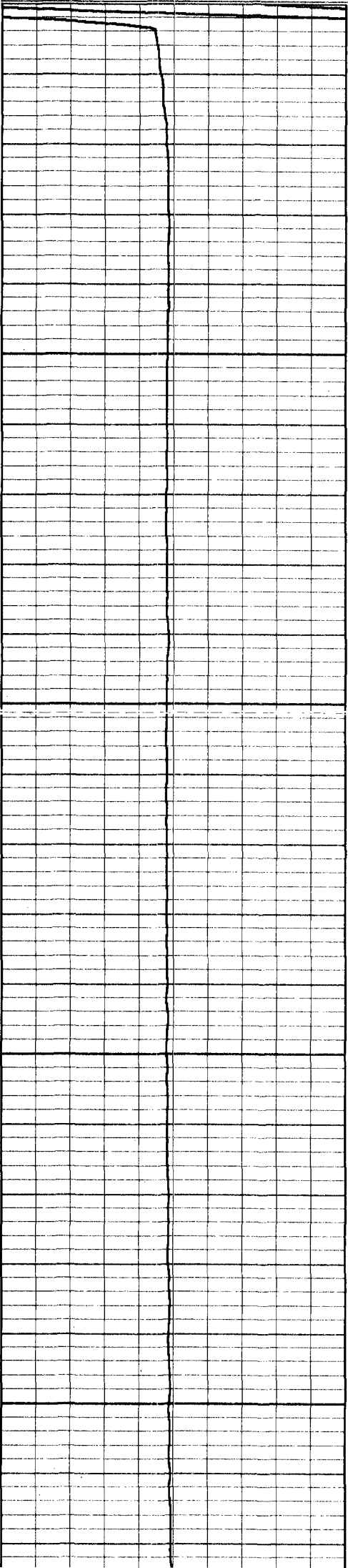
Database File: eastport1.db
 Dataset Pathname: TEMPMP
 Presentation Format: temp
 Dataset Creation: Thu Oct 22 10:06:27 2009 by Log Open-Cased 071220
 Charted by: Depth in Feet scaled 1:240

60 Temperature (degF) (degF) 100

60 Temperature (degF) (degF) 100

-2.5 Delta Temperature (degF) 2.5

TEMP
(degF)

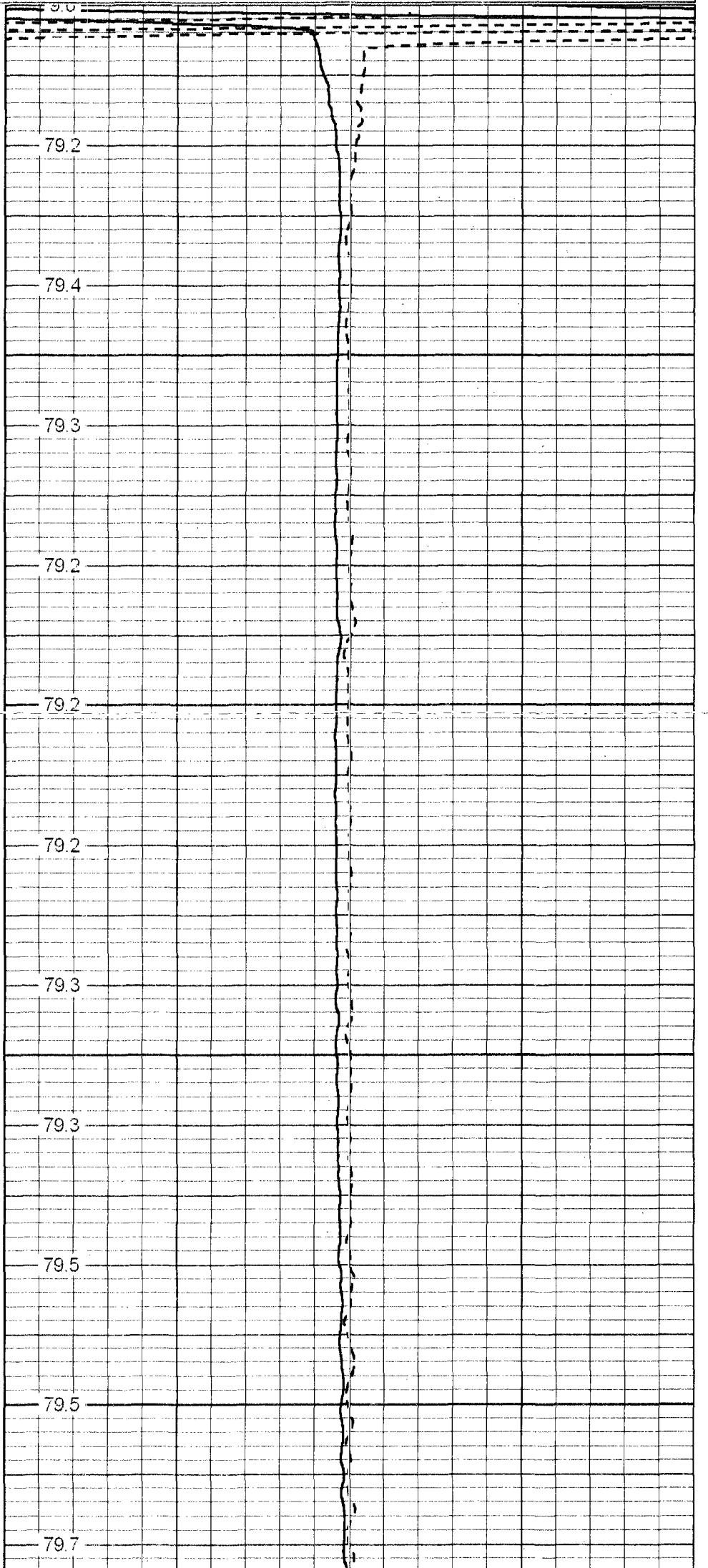


50

100

150

200



79.2

79.4

79.3

79.2

79.2

79.2

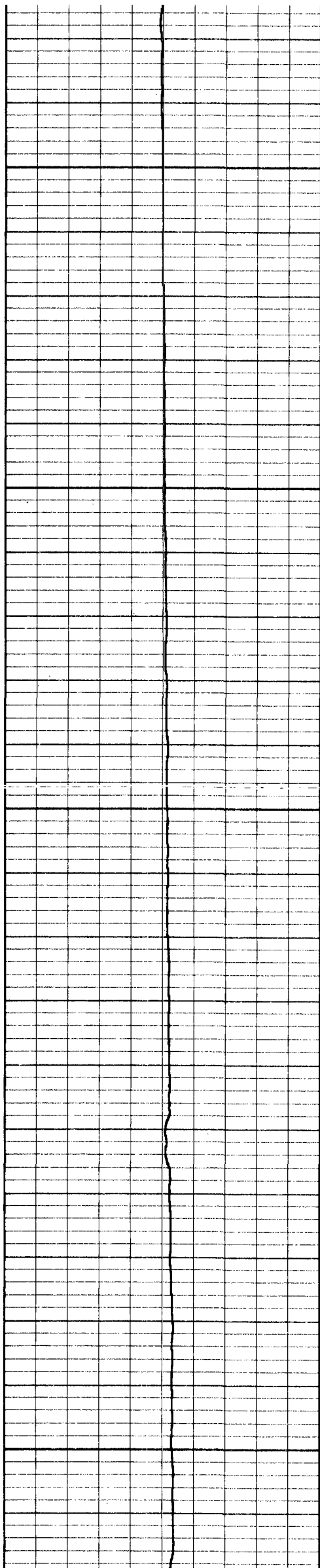
79.3

79.3

79.5

79.5

79.7



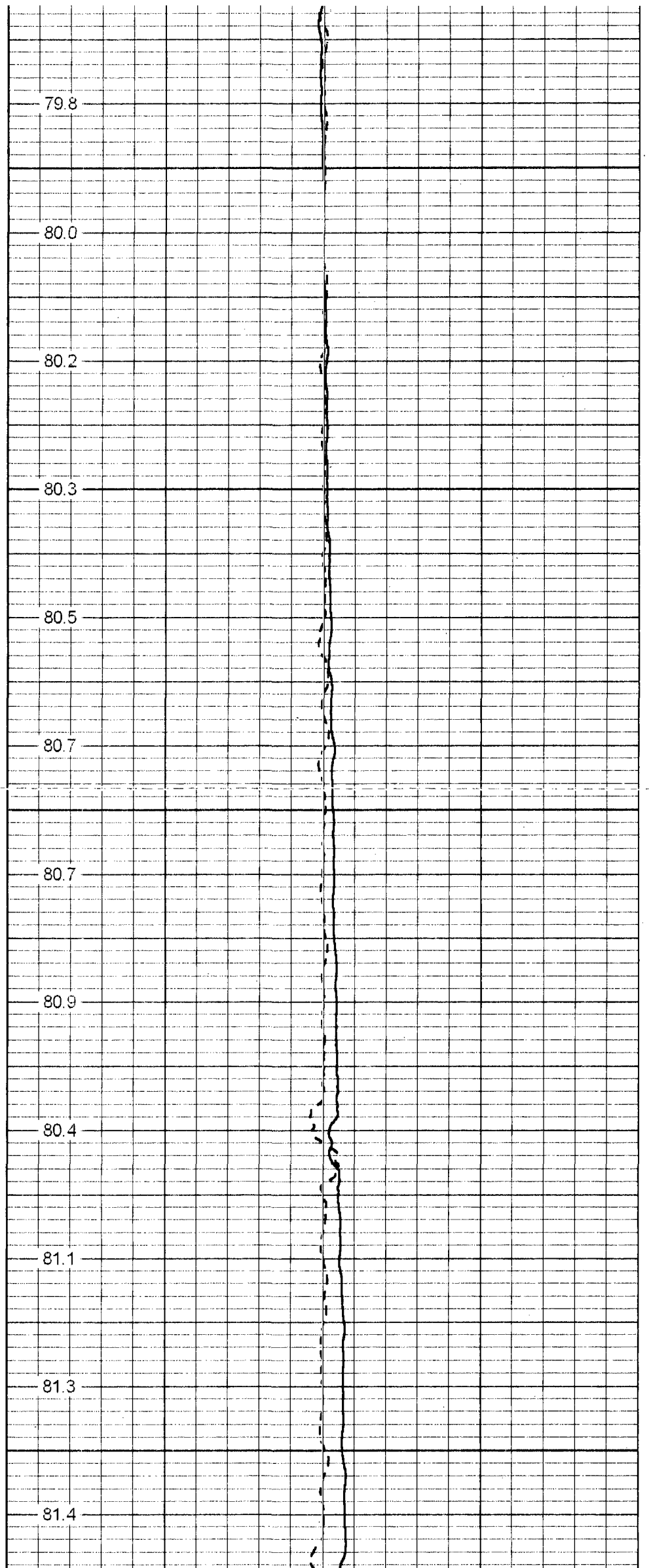
250

300

350

400

450



79.8

80.0

80.2

80.3

80.5

80.7

80.7

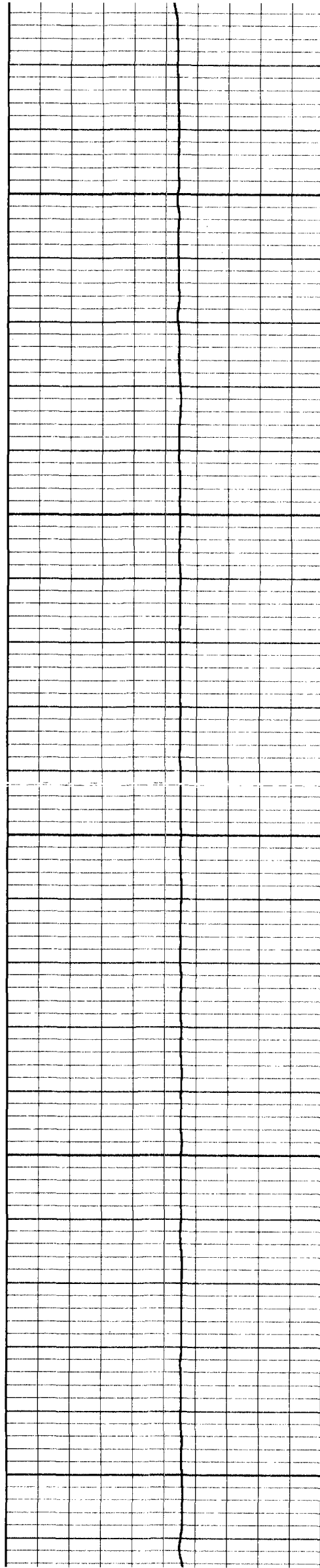
80.9

80.4

81.1

81.3

81.4



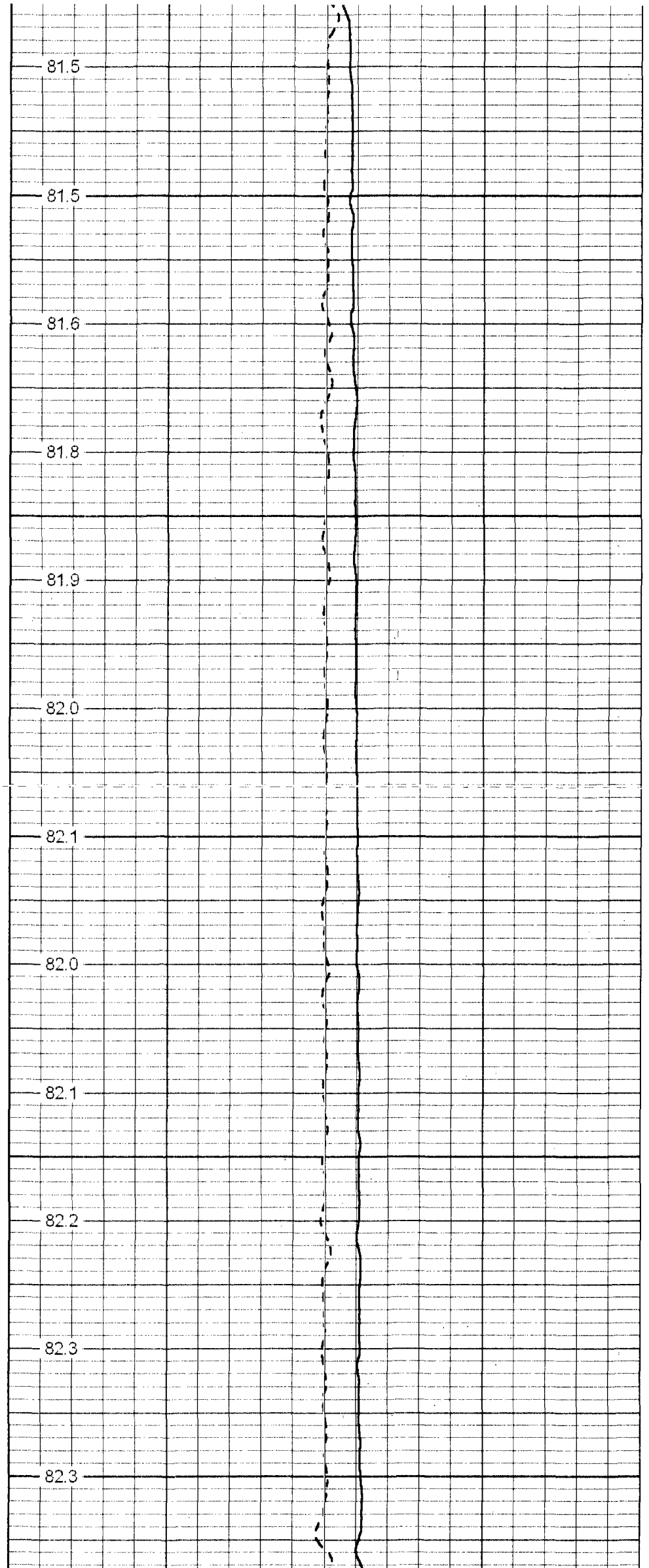
500

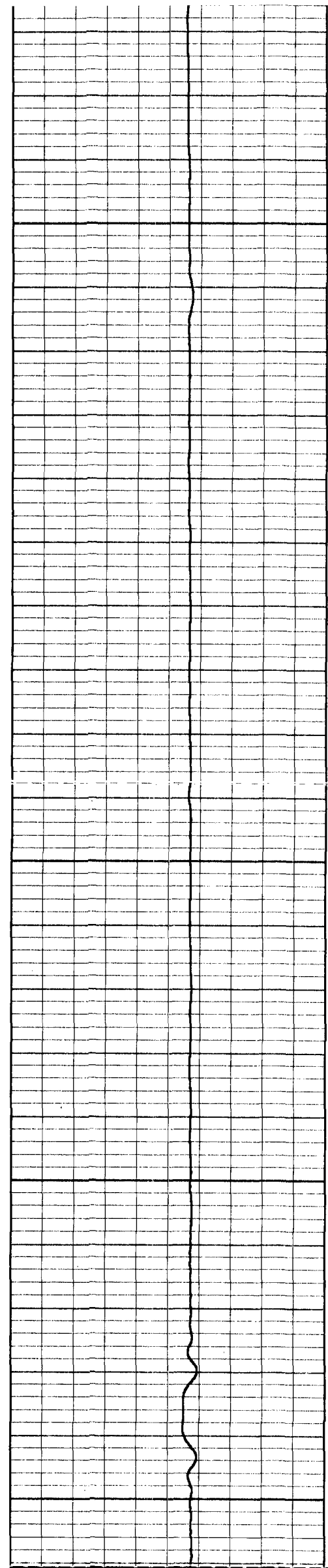
550

600

650

700





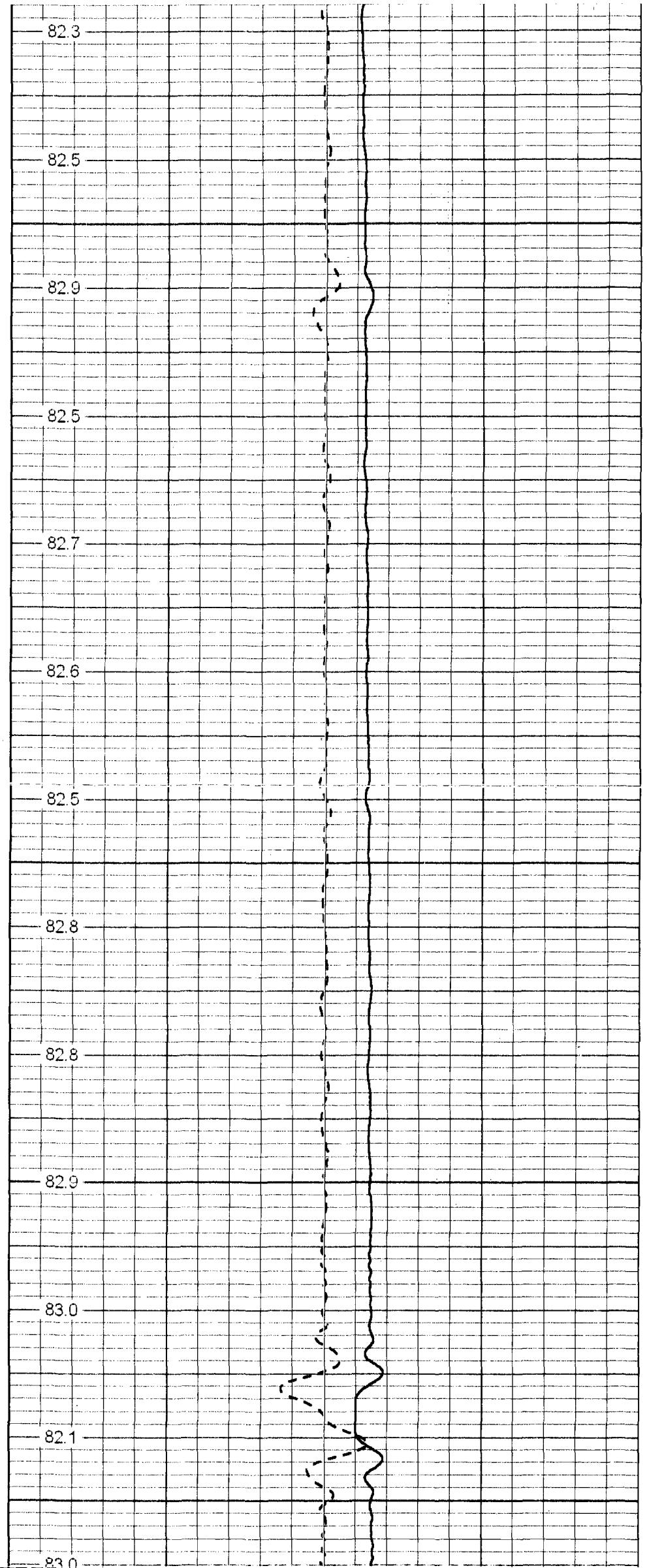
750

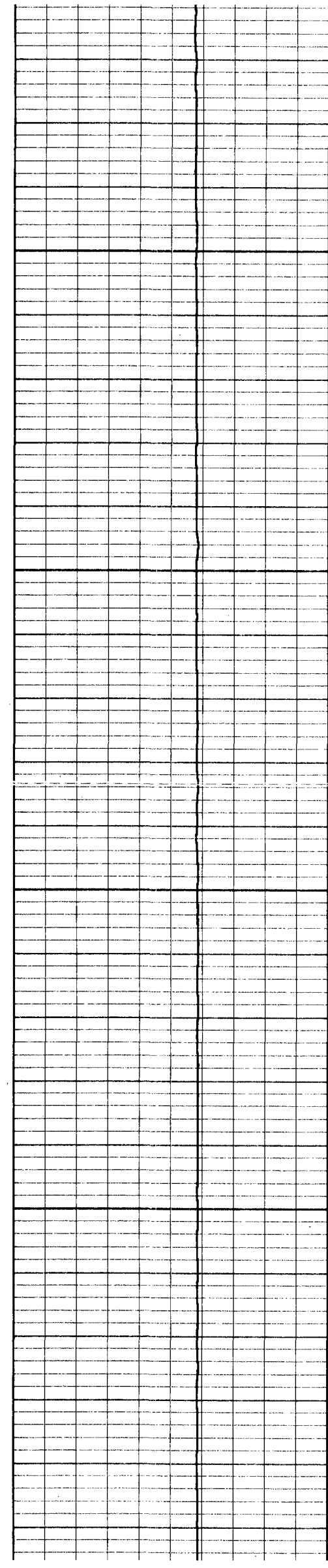
800

850

900

950





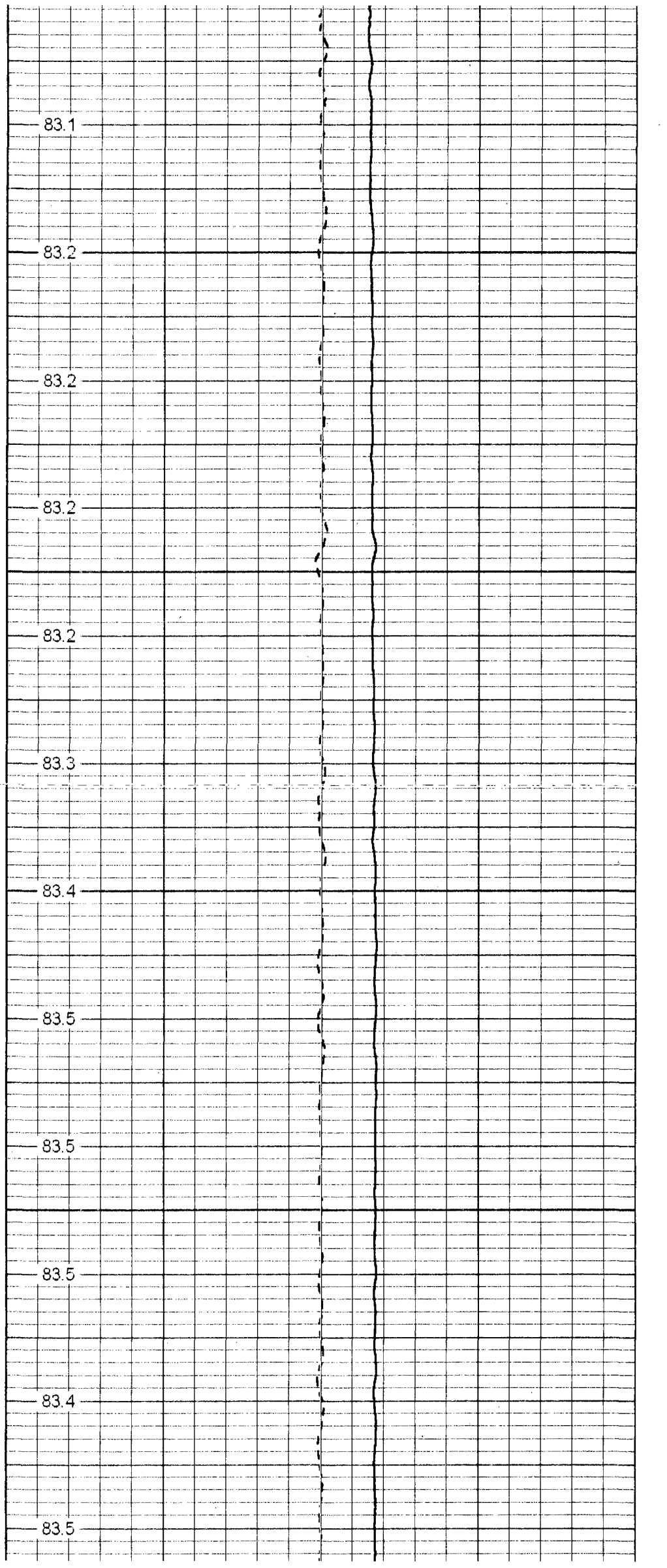
1000

1050

1100

1150

1200



83.1

83.2

83.2

83.2

83.2

83.3

83.4

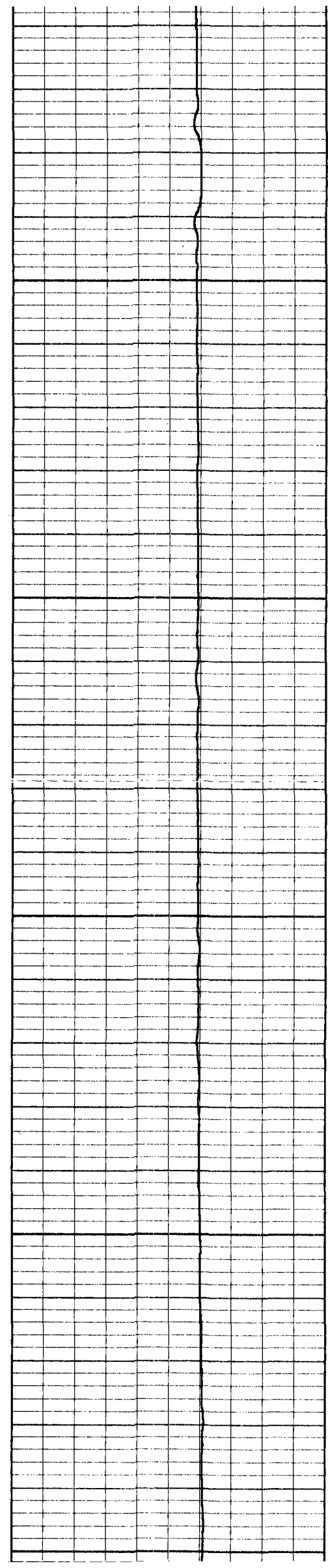
83.5

83.5

83.5

83.4

83.5



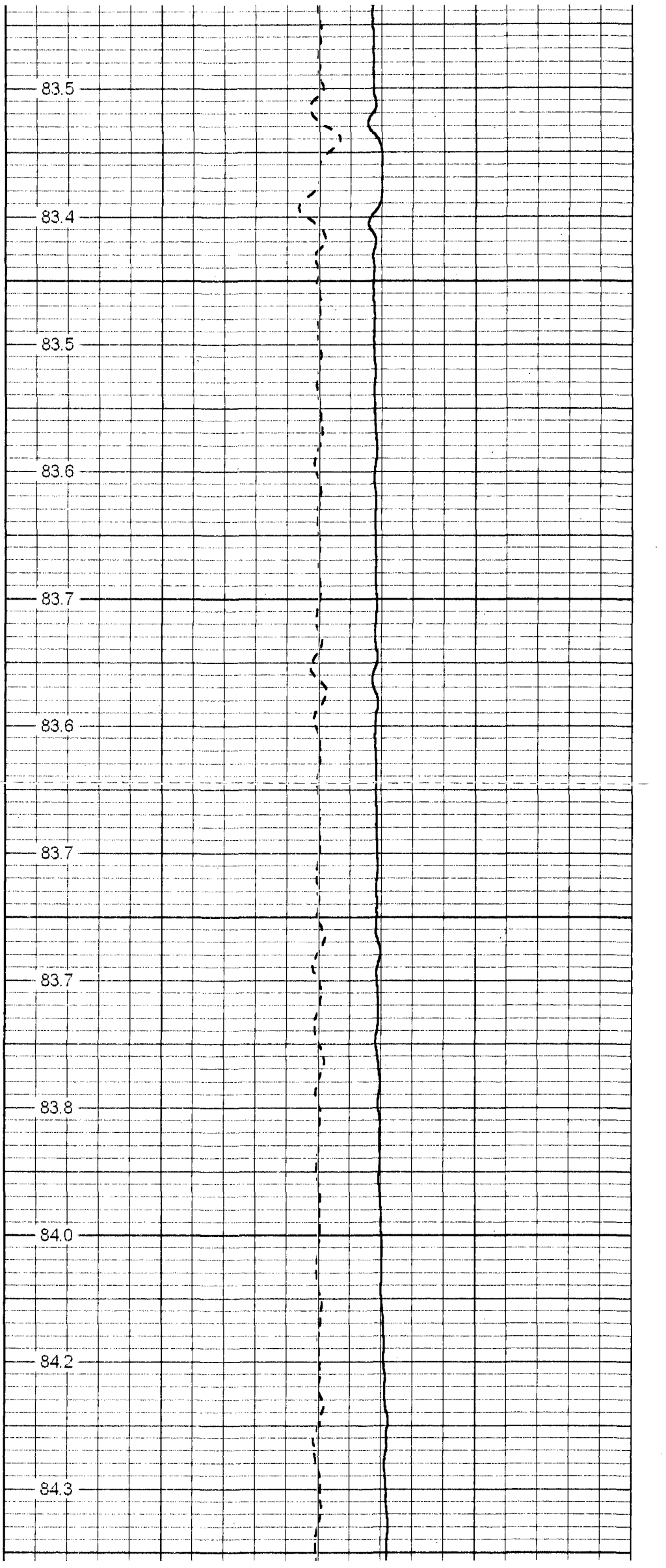
1250

1300

1350

1400

1450



83.5

83.4

83.5

83.6

83.7

83.6

83.7

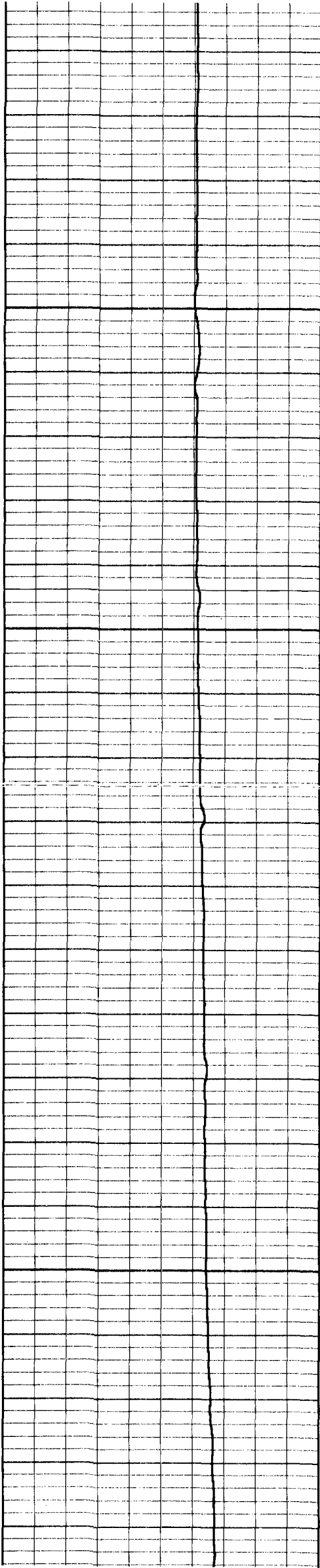
83.7

83.8

84.0

84.2

84.3

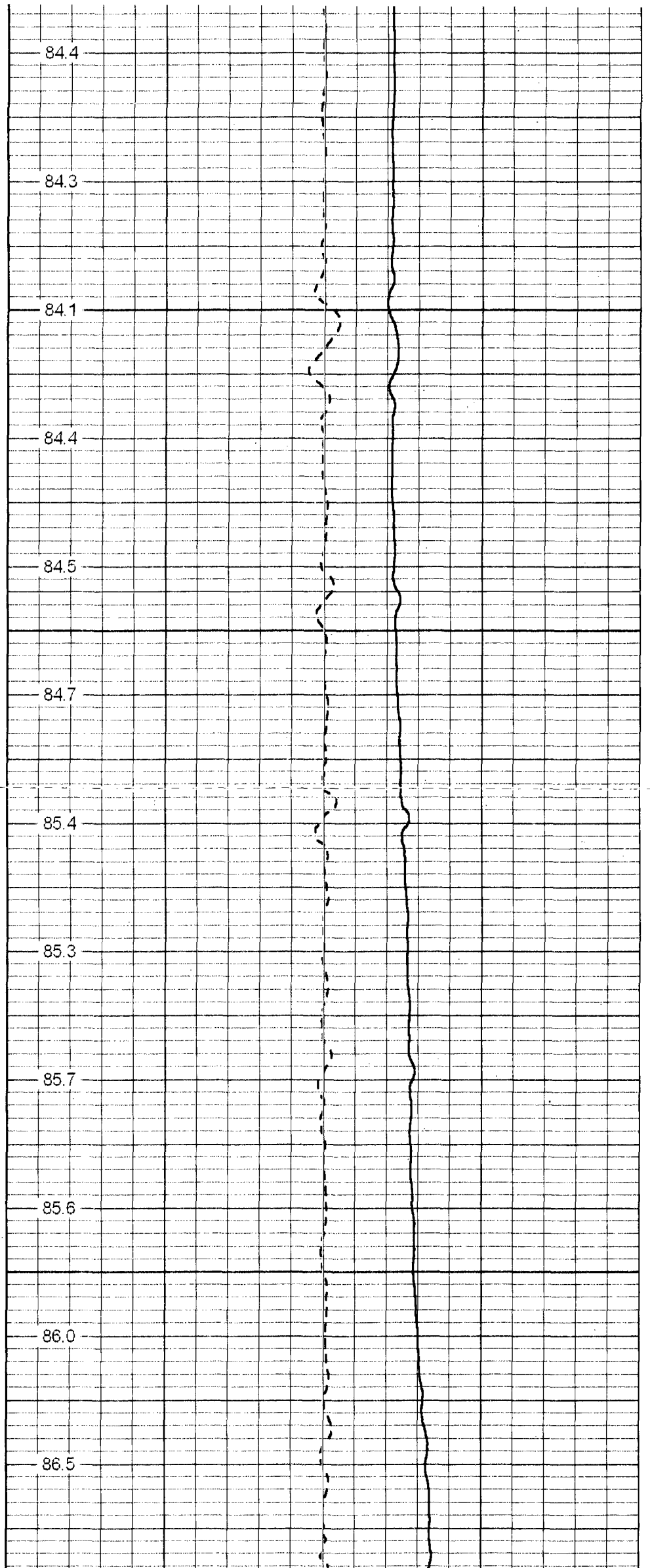


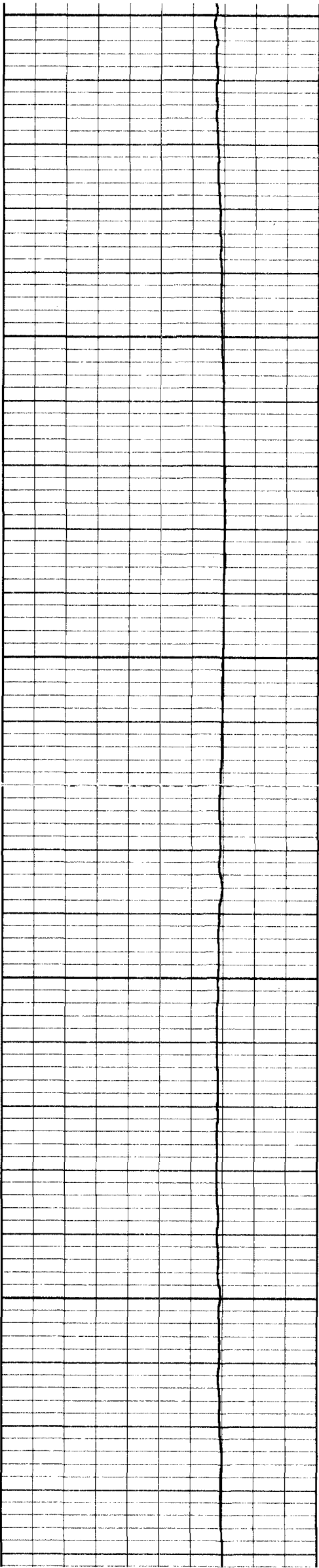
1500

1550

1600

1650





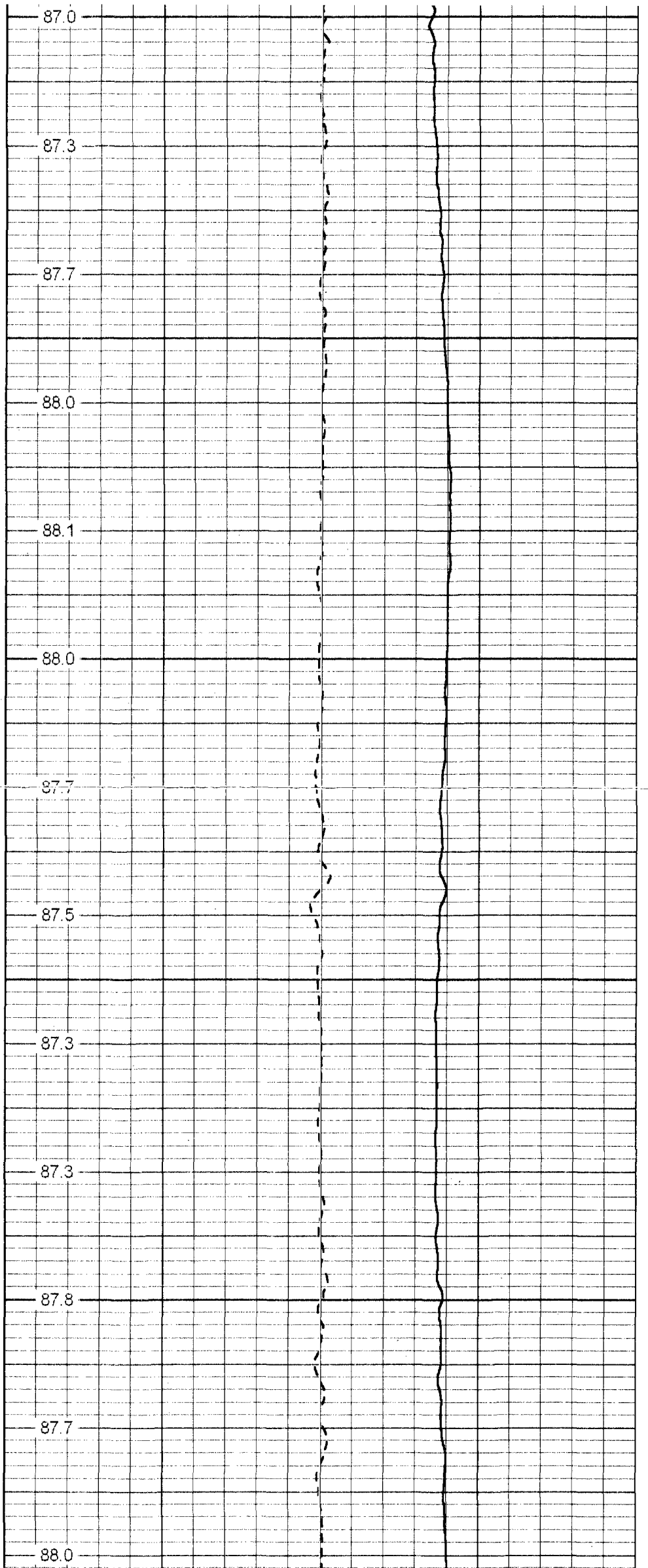
1700

1750

1800

1850

1900



87.0

87.3

87.7

88.0

88.1

88.0

87.7

87.5

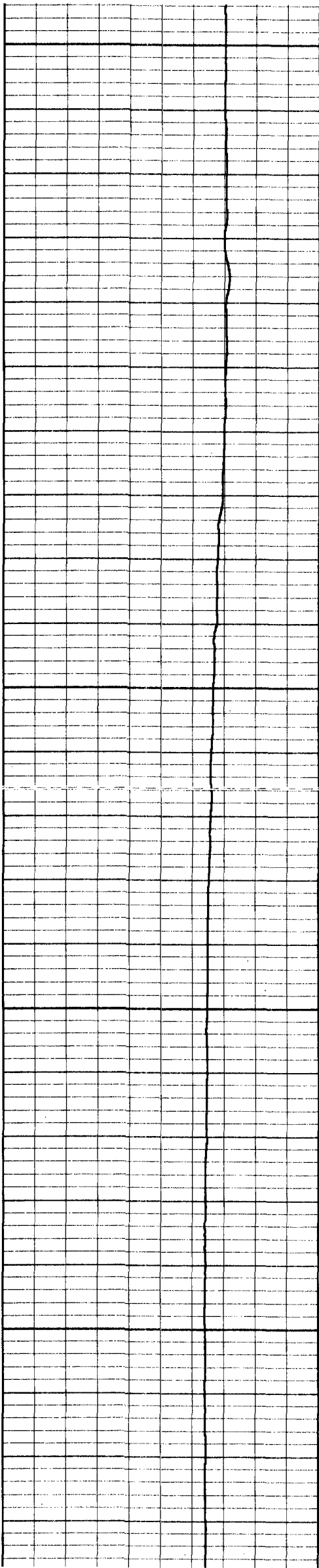
87.3

87.3

87.8

87.7

88.0



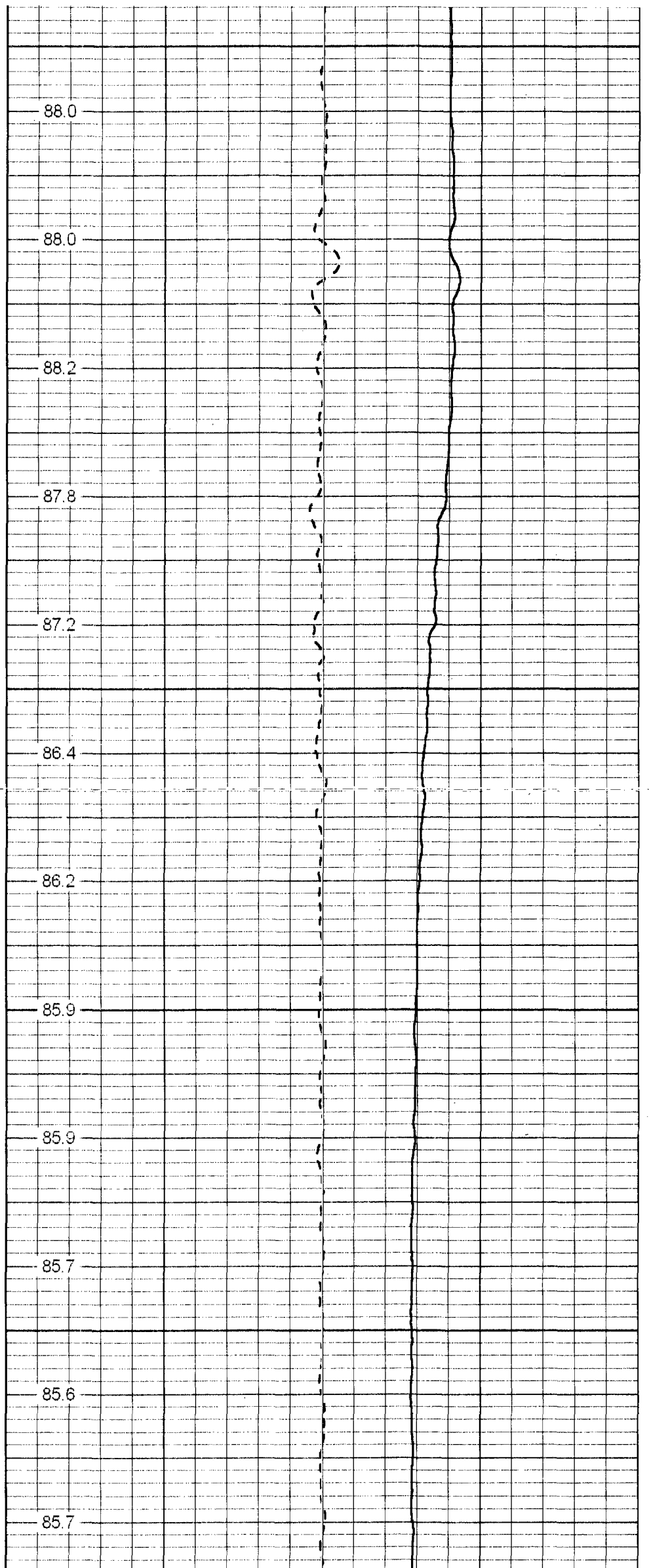
1950

2000

2050

2100

2150



88.0

88.0

88.2

87.8

87.2

86.4

86.2

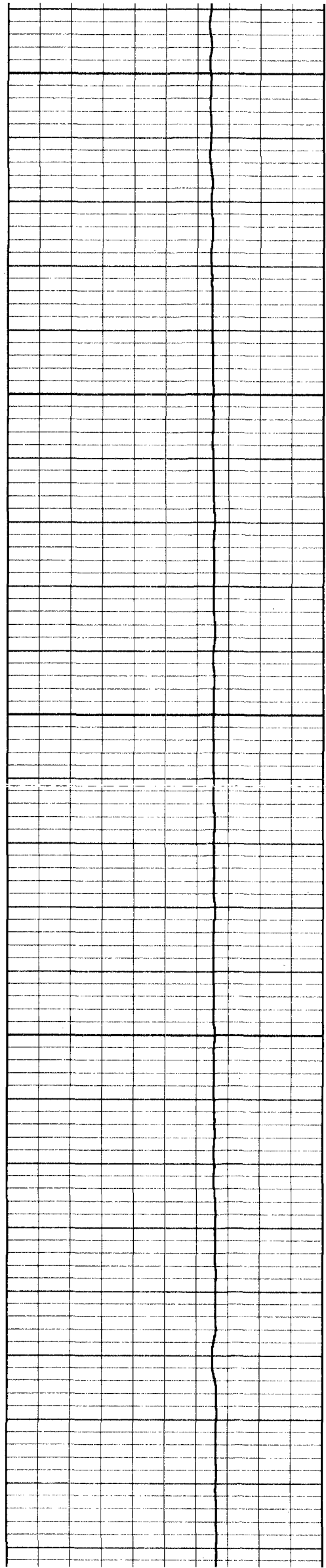
85.9

85.9

85.7

85.6

85.7



2200

85.7

85.8

85.9

2250

86.1

86.1

2300

86.1

86.2

86.1

2350

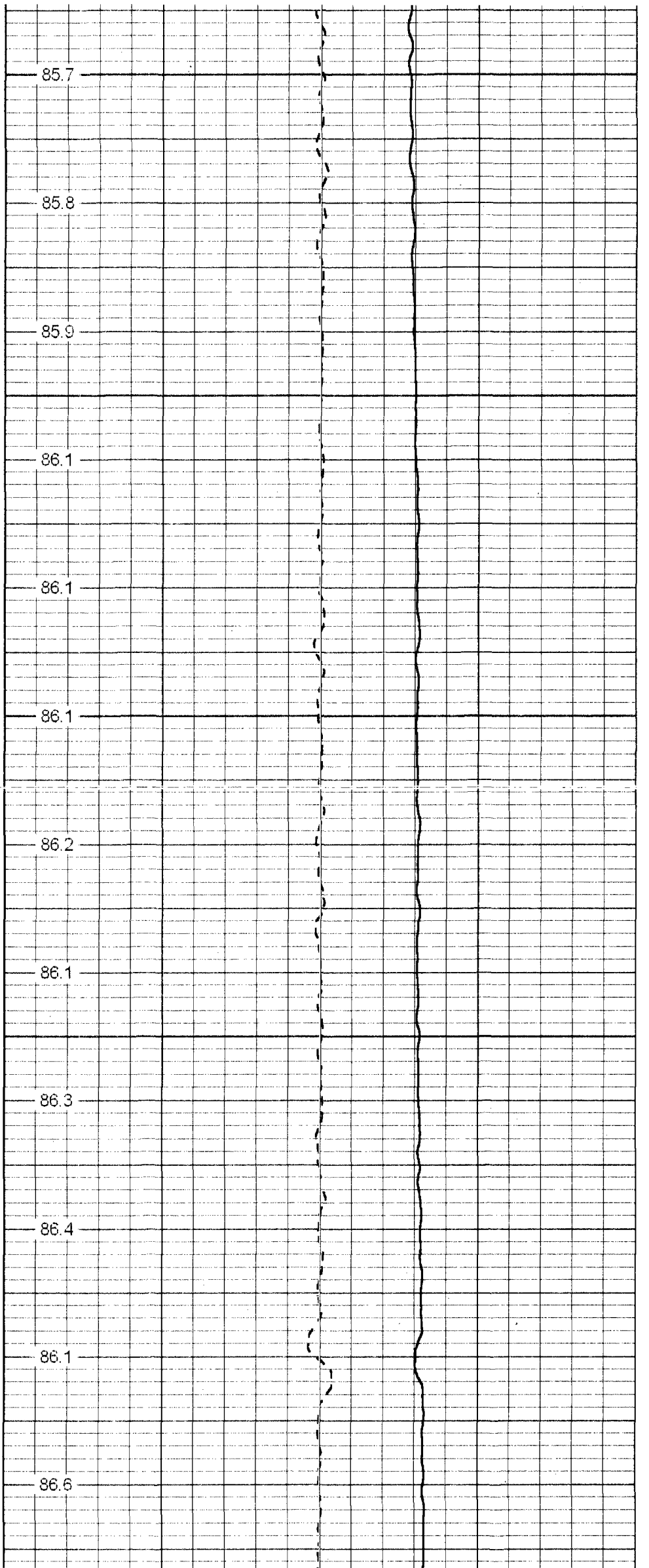
86.3

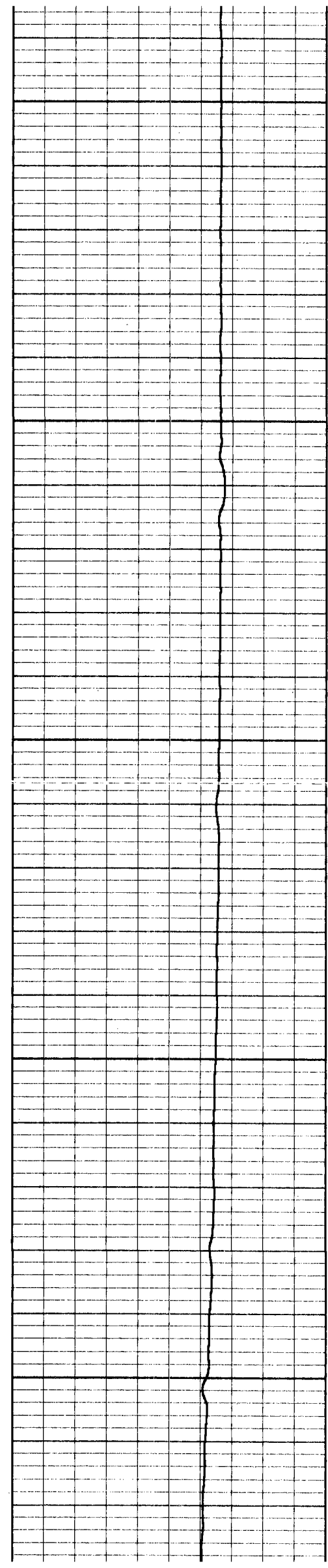
86.4

2400

86.1

86.6





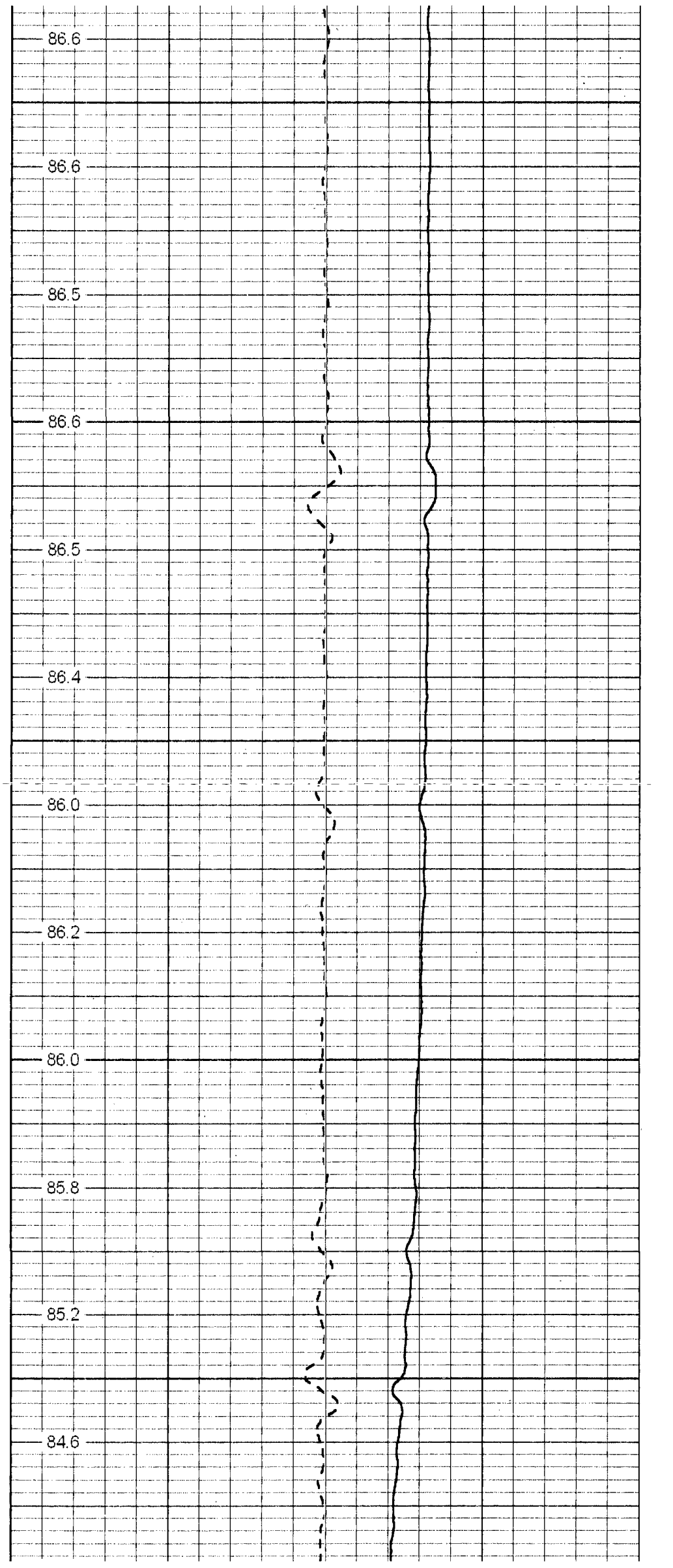
2450

2500

2550

2600

2650



86.6

86.6

86.5

86.6

86.5

86.4

86.0

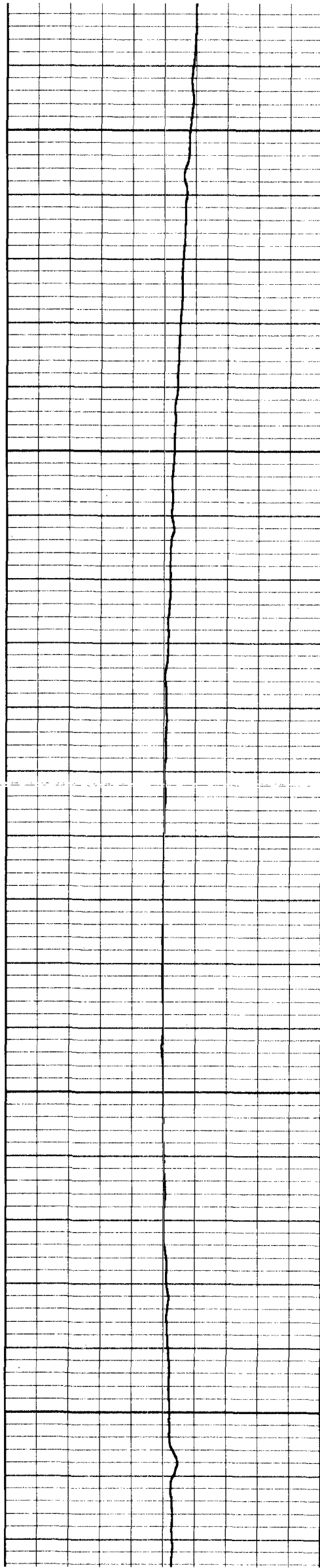
86.2

86.0

85.8

85.2

84.6



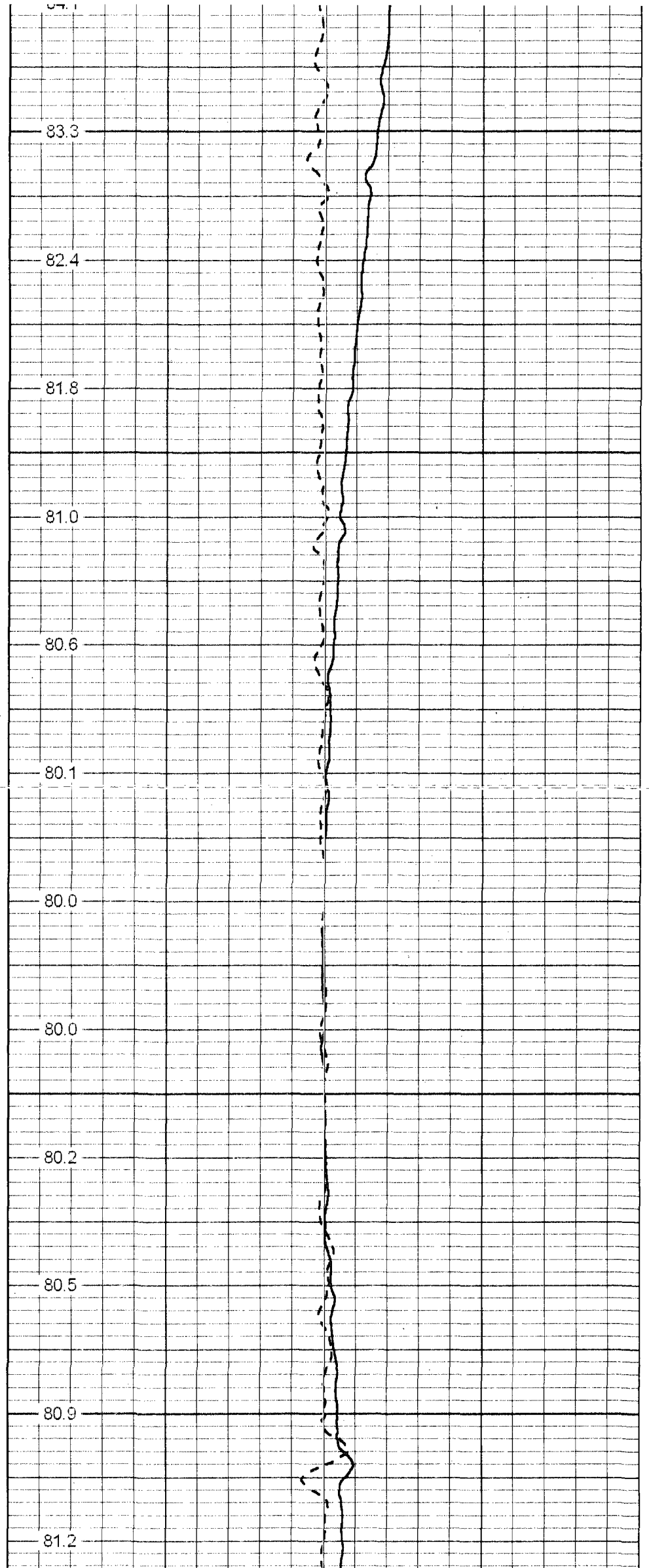
2700

2750

2800

2850

2900



83.3

82.4

81.8

81.0

80.6

80.1

80.0

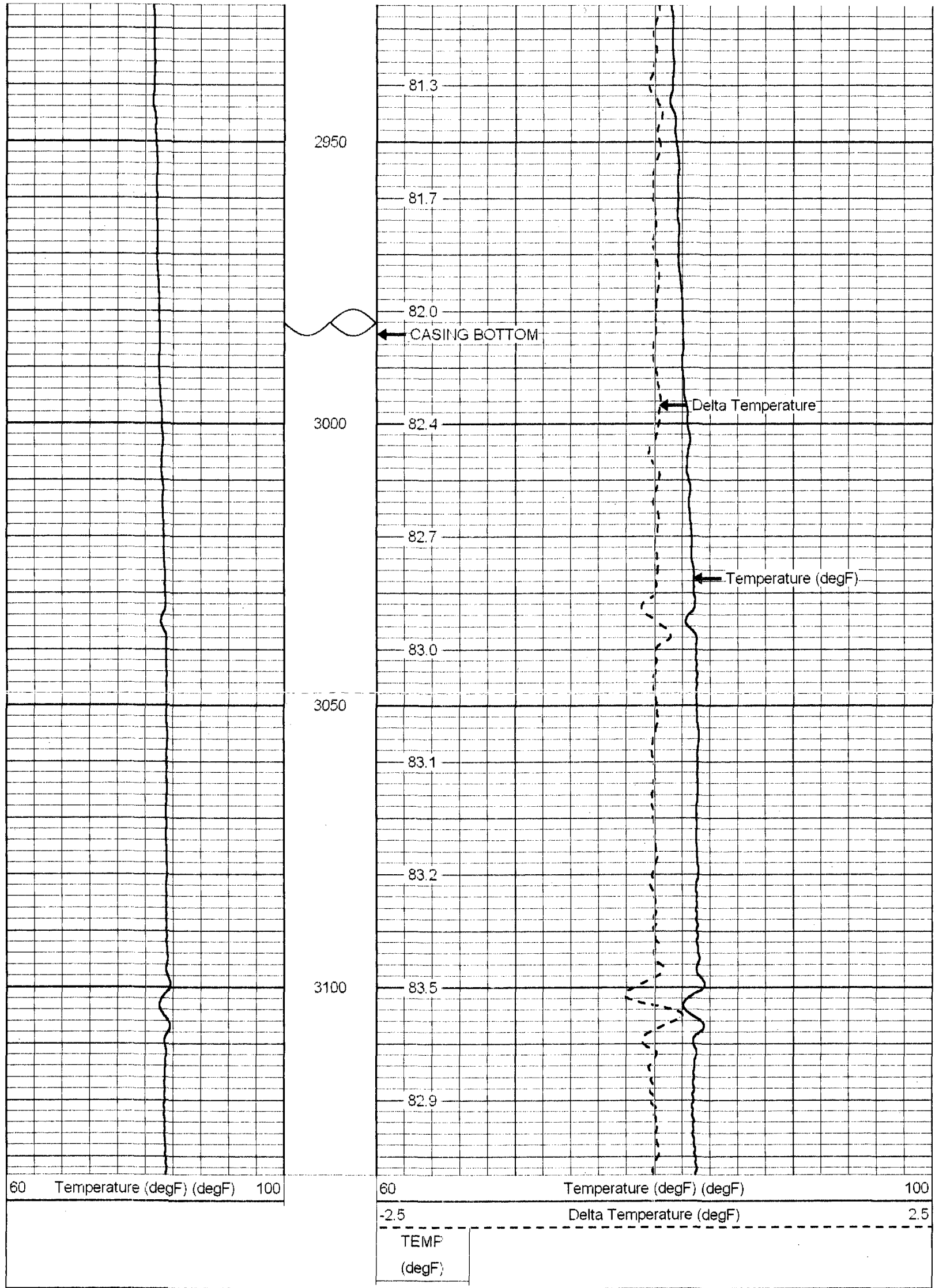
80.0

80.2

80.5

80.9

81.2



Calibration Report

Database File: eastport1.db
 Dataset Pathname: TEMPMP

Temperature Calibration Report

Serial Number: RTS002
 Tool Model: RTS2
 Performed: Mon Oct 22 20:46:14 2007

	Reference	Reading
Low Reference:	0.00 degF	0.00 cps
High Reference:	1.00 degF	10.00 cps
Gain:	0.10	
Offset:	0.00	
Delta Spacing	5	

Gamma Ray Calibration Report

Serial Number: RTS001
 Tool Model: RTS1
 Performed: Thu Oct 22 10:11:55 2009

Calibrator Value: 120.0

Background Reading: 13.3 cps
 Calibrator Reading: 241.9 cps

Sensitivity: 0.5251 /cps

Sensor	Offset (ft)	Schematic	Description	Len (ft)	OD (in)	Wt (lb)
CCL	24.98					
GR	23.81		GR-RTS1 (RTS001) Upper Gamma Ray Section for RTS	5.21	1.69	25.00
			SPACER-RTS (001) RTS Spacer Extension	4.17	1.69	10.00
			EJECT-PTS (001) RTS Ejector Section; port 165.25" (13.77" from tool bottom	2.96	1.38	20.00
MidGR	11.17					

0.00

0.00

GR-RTS2 (RTS002)
Lower Gamma Ray Section for RTS

13.54

1.69

40.00

LowGR

1.25

TEMP

0.08

Dataset:	eastport1.db: field/well/run1/TEMPMP
Total Length:	25.88 ft
Total Weight:	95.00 lb
O.D.	1.69 in