



**YOUNGQUIST
BROTHERS, Inc**
GEOPHYSICAL LOGGING DIVISION

**FLUID CONDUCTIVITY
TEMPERATURE
LOG**

Company TOWN OF DAVIE/AECOM
Well IW-2
Field DAVIE
County BROWARD State FL

Company TOWN OF DAVIE/AECOM
Well IW-2
Field DAVIE
County BROWARD
State FL

Location: TOWN OF DAVIE WWTP
API #: LAT 26 05 10.78 N
LONG 80 14 29.81 W
SEC 22 TWP 50S RGE 41E
Permanent Datum G.L. Elevation 6.2'NGVD
Log Measured From G.L. R.B. 1929
Drilling Measured From G.L. G.L. 6.2'NGVD.29

Date 6-MAR-2011

| | | | | |
|------------------------|----------|--|--|--|
| Run Number | FOUR | | | |
| Depth Driller | 2100' | | | |
| Depth Logger | 2100' | | | |
| Bottom Logged Interval | 2100' | | | |
| Top Log Interval | CASING | | | |
| Open Hole Size | 12.25" | | | |
| Type Fluid | WATER | | | |
| Density / Viscosity | 9.4/43 | | | |
| Max. Recorded Temp. | 77F | | | |
| Estimated Cement Top | NA | | | |
| Time Well Ready | 2230 | | | |
| Time Logger on Bottom | 0030 | | | |
| Equipment Number | 103 | | | |
| Location | FT MYERS | | | |
| Recorded By | FULLER | | | |
| Witnessed By | E. LOPEZ | | | |

| Borehole Record | | Borehole Record | |
|-----------------|---------------------|-----------------|-------------|
| Run Number | Bit From To | Run Number | Bit From To |
| ONE | 68.5" SURFACE 254' | | |
| TWO | 58.5" CASING 980' | | |
| THREE | 12.25" CASING 2100' | | |

| | | | | |
|-------------------|------|------------|---------|--------|
| Casing Record | Size | Wgt/Ft | Top | Bottom |
| Surface String | 60" | .375" W.T. | SURFACE | 250' |
| Prot. String | 50" | .375" W.T. | SURFACE | 975' |
| Production String | | | | |
| Liner | | | | |

<<< Fold Here >>>

All interpretations are opinions based on inferences from electrical or other measurements and we cannot and do not guarantee the accuracy or correctness of any interpretation, and we shall not, except in the case of gross or willful negligence on our part, be liable or responsible for any loss, costs, damages, or expenses incurred or sustained by anyone resulting from any interpretation made by any of our officers, agents or employees. These interpretations are also subject to our general terms and conditions set out in our current Price Schedule.

Comments

FLOWMETER
X-Y CALIPER/GAMMA RAY
DUAL INDUCTION
BOREHOLE SONIC
BOREHOLE TELEVIEWER

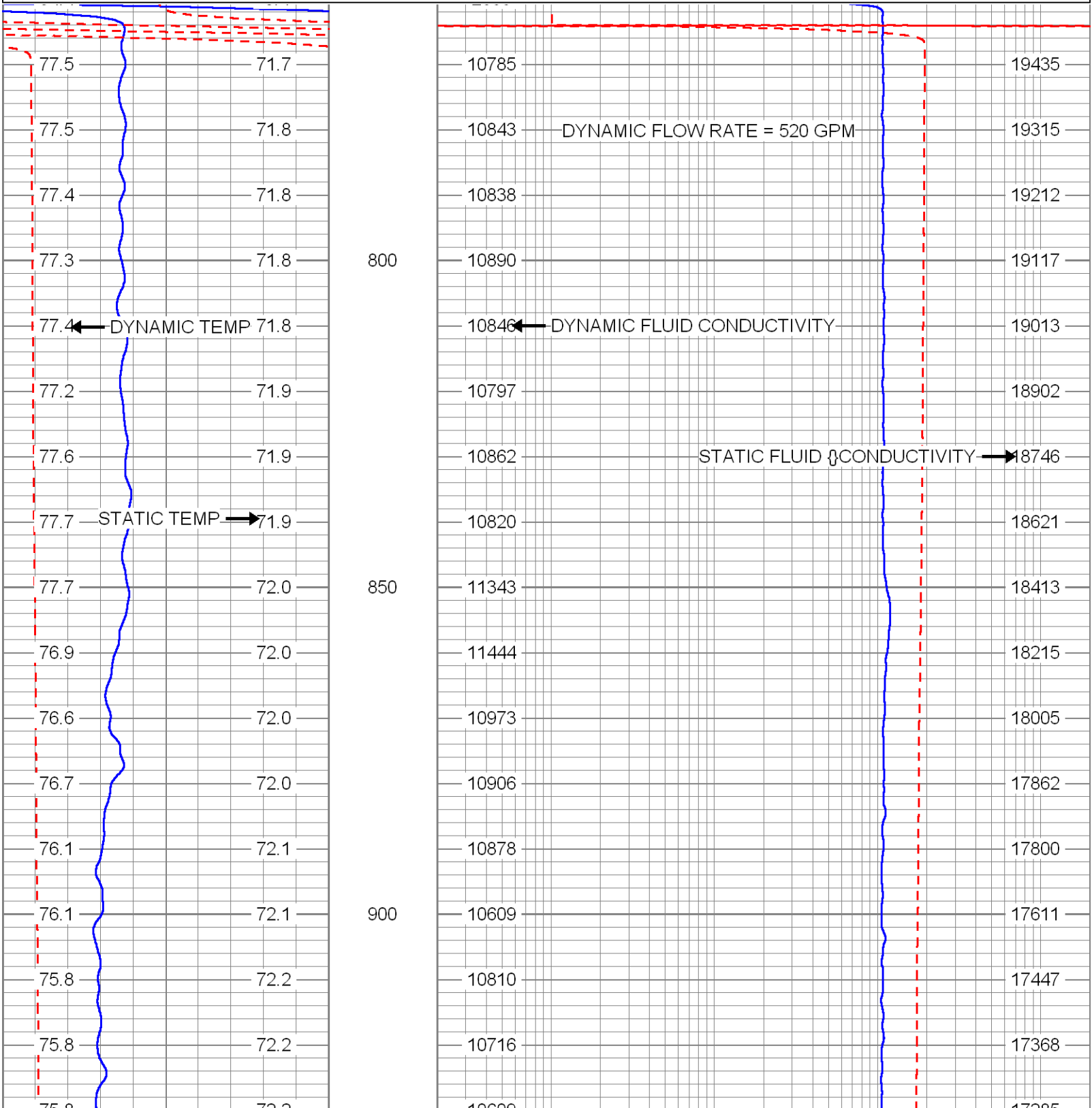
DYNAMIC FLOW RATE = 520 GPM

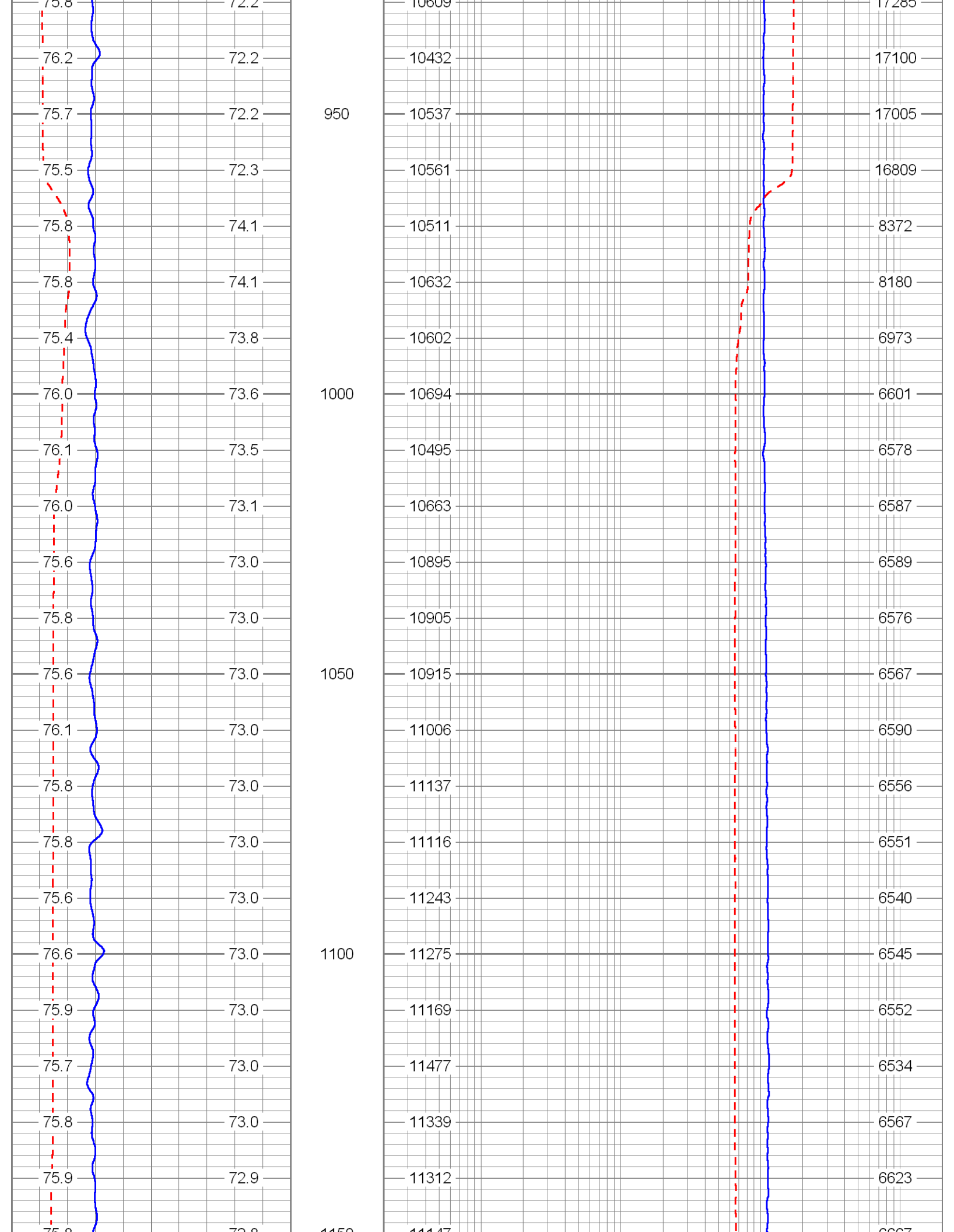


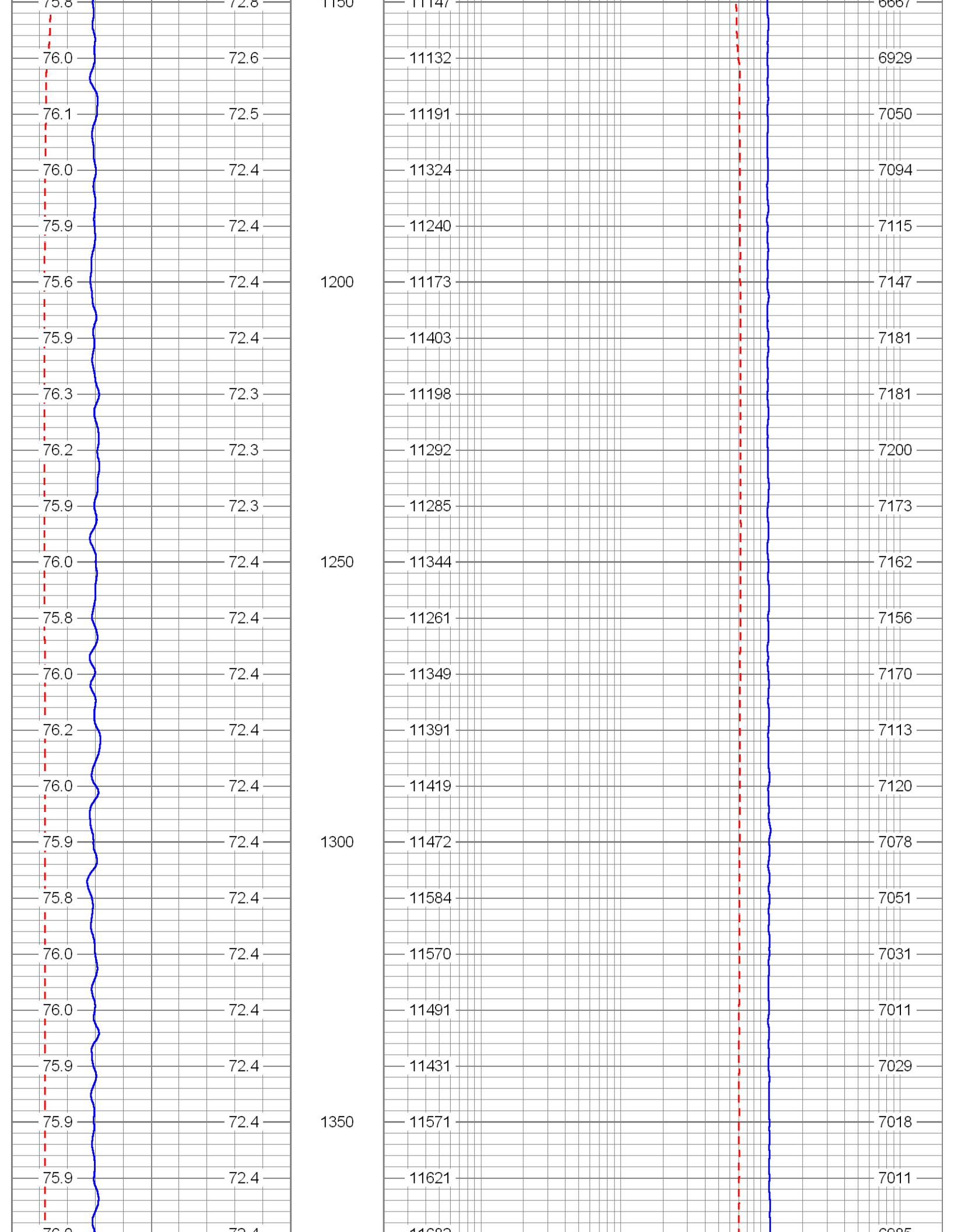
MERGED FCT (520 GPM)

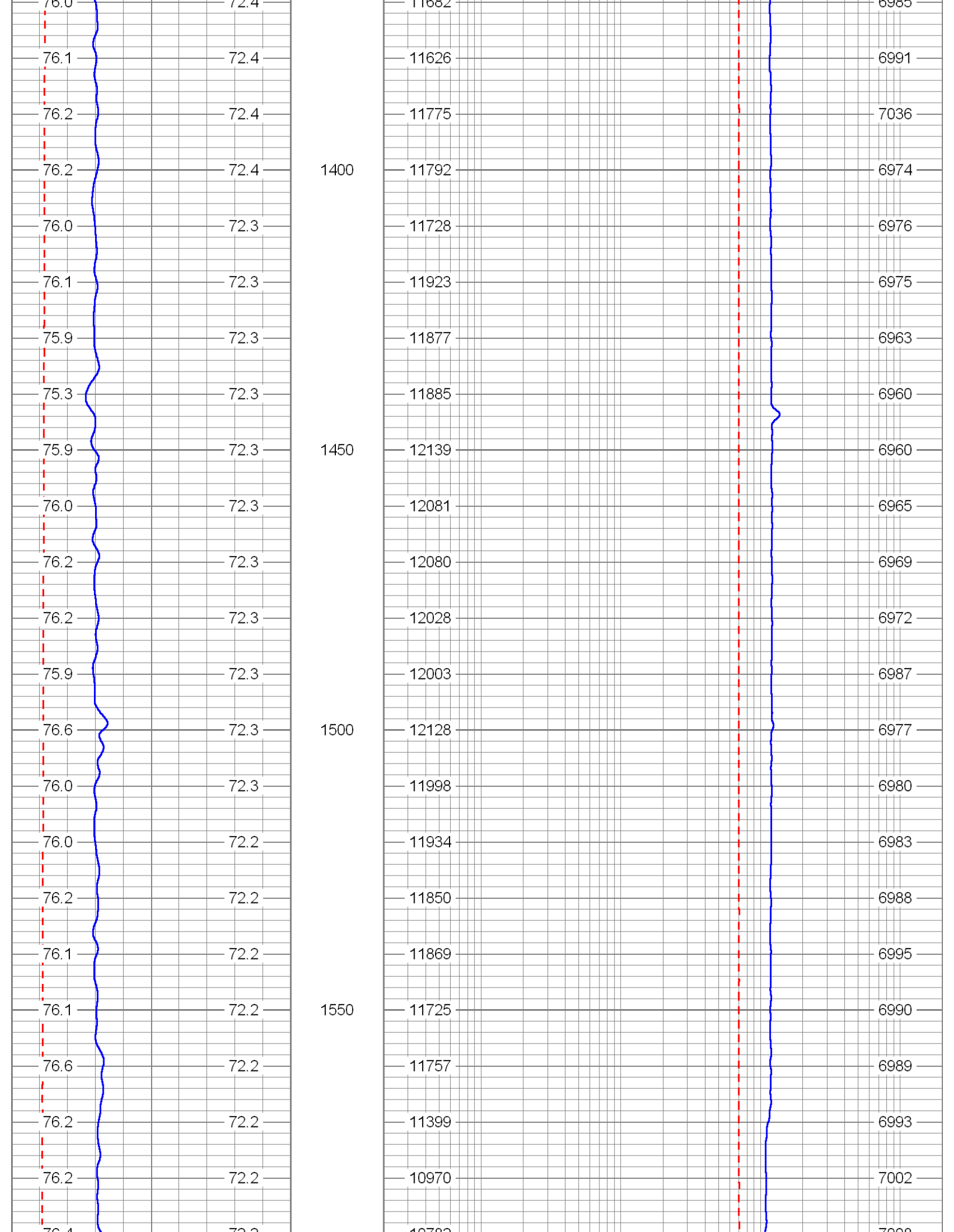
Database File: daview2.db
 Dataset Pathname: run4/pass14
 Presentation Format: frt_mg
 Dataset Creation: Sun Mar 06 18:05:38 2011 by Log Open-Cased 100827
 Charted by: Depth in Feet scaled 1:240

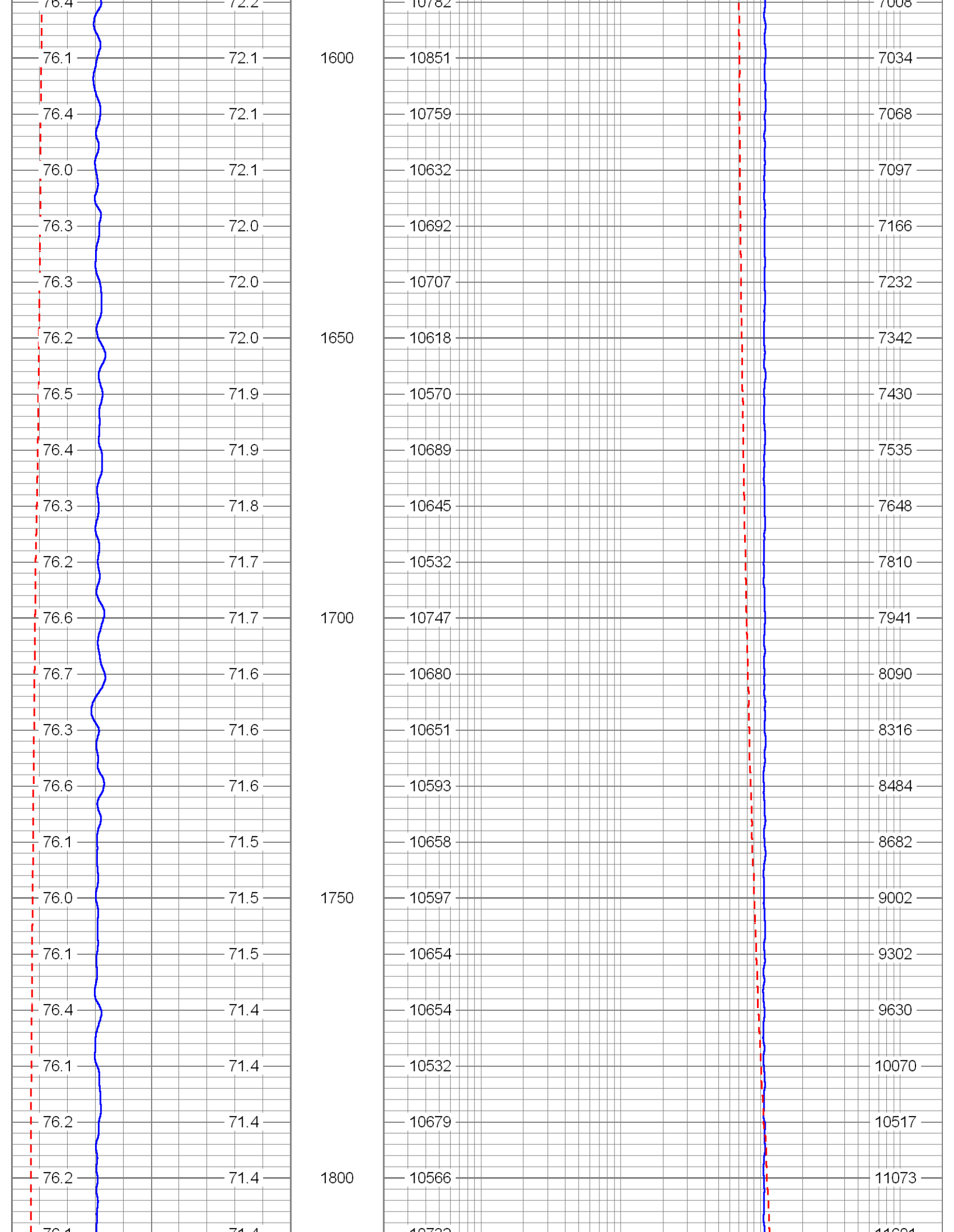
| | | | | | |
|-----------------------|-----------------------|----|-----------------------|---|--|
| 70 | DYNAMIC TEMP (degF) | 90 | 20 | DYNAMIC FLUID CONDUCTIVITY (uS) (uS/cm) | 200000 |
| 70 | STATIC TEMP (degF) | 90 | 20 | STATIC FLUID CONDUCTIVITY (uS) (uS/cm) | 200000 |
| DYNAMIC TEM (degF) | STATIC TEMF (degF) | | FLUID COND (uS/cm) | | STATIC FLUID CONDUCTIVIT (uS/cm) |

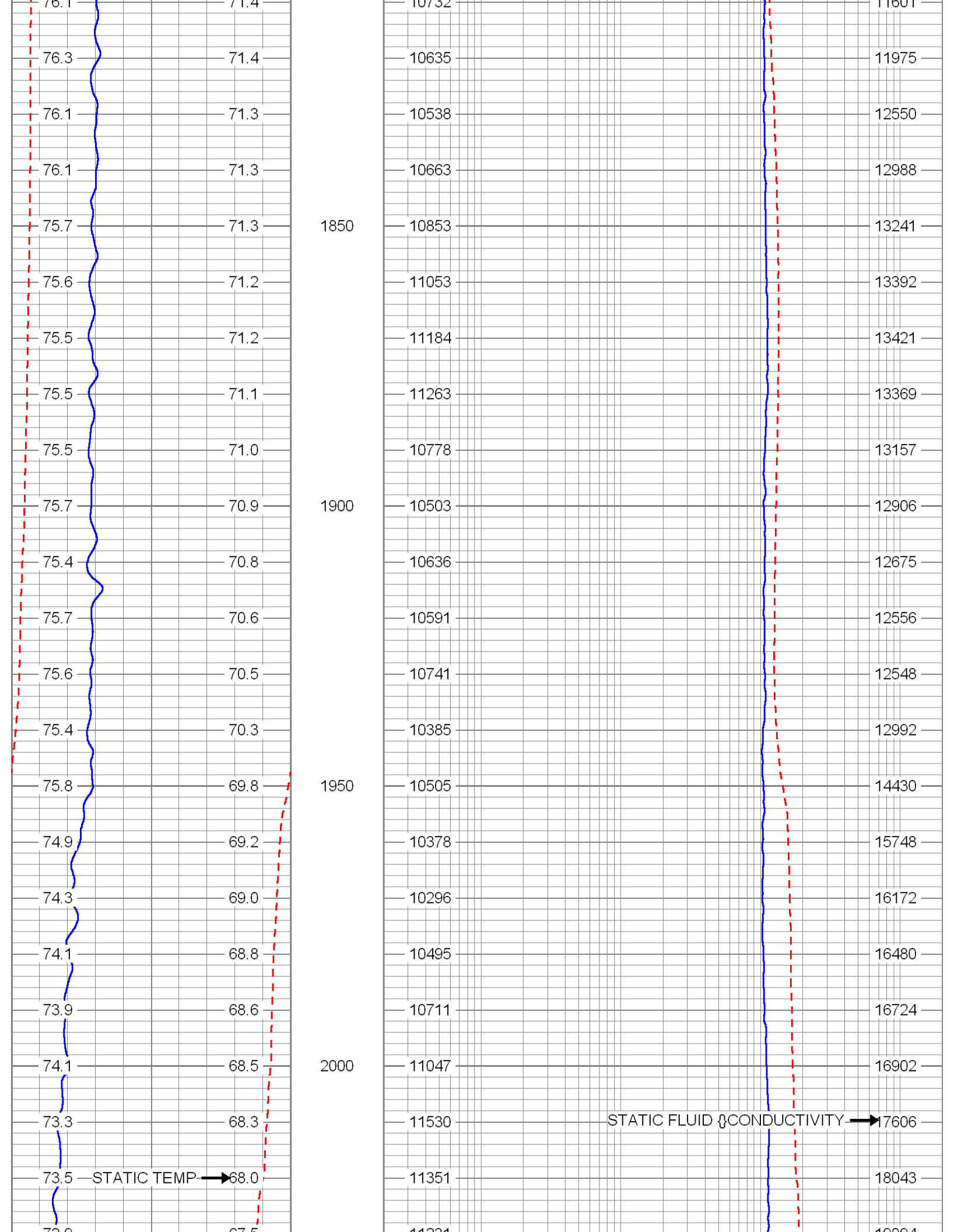


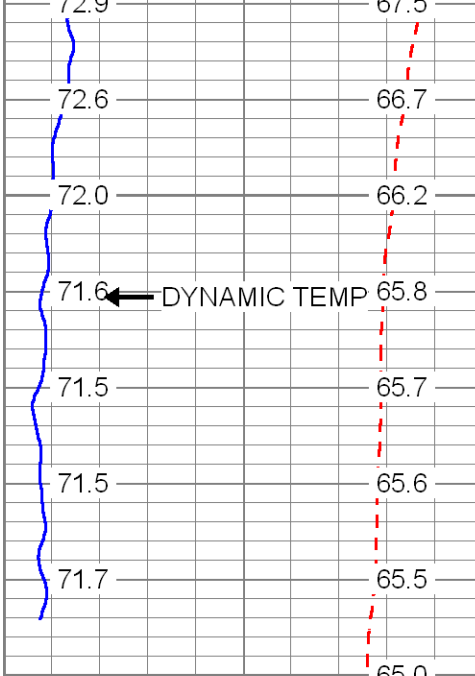






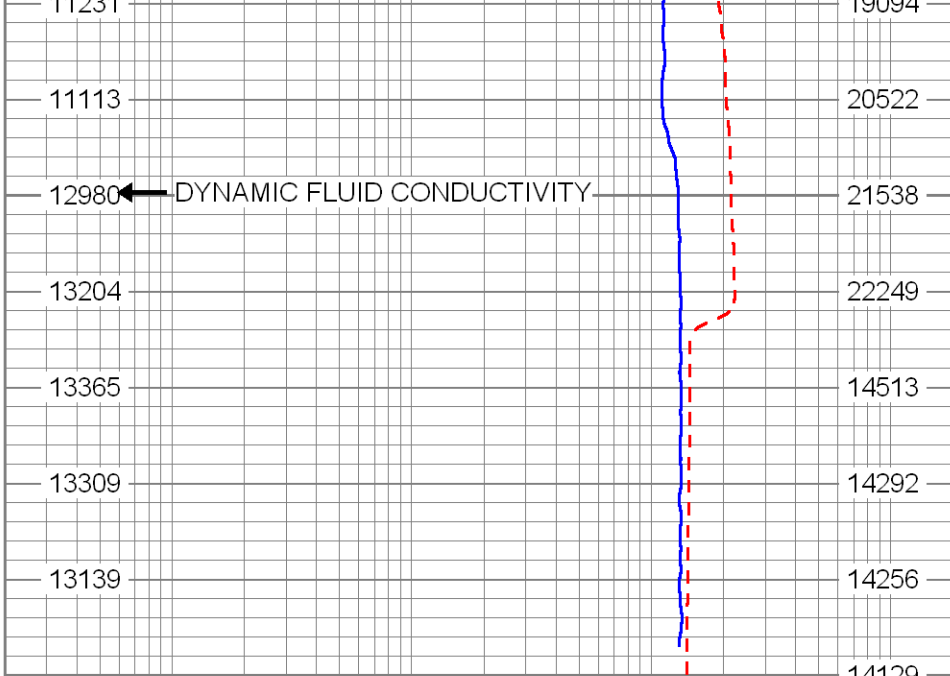






2050

2100



| | | |
|-------------|---------------------|------------|
| 70 | DYNAMIC TEMP (degF) | 90 |
| 70 | STATIC TEMP (degF) | 90 |
| DYNAMIC TEM | | STATIC TEM |
| (degF) | | (degF) |

| | | |
|------------|---|--------------|
| 20 | DYNAMIC FLUID CONDUCTIVITY (uS) (uS/cm) | 200000 |
| 20 | STATIC FLUID CONDUCTIVITY (uS) (uS/cm) | 200000 |
| FLUID COND | | STATIC FLUID |
| (uS/cm) | | CONDUCTIVIT |
| | | (uS/cm) |

| Sensor | Offset (ft) | Schematic | Description | Len (ft) | OD (in) | Wt (lb) |
|--------|-------------|-----------|------------------|----------|---------|---------|
| TEMP | 0.70 | | TEMP-SONDEX (31) | 1.20 | 1.63 | 10.00 |
| FRES | 0.50 | | FRT-SONDEX (31) | 0.60 | 1.69 | 10.00 |

Dataset: davieiw2.db: field/well/run4/pass14
 Total Length: 1.80 ft
 Total Weight: 20.00 lb
 O.D.: 1.69 in

Calibration Report

Database File: davieiw2.db
 Dataset Pathname: run4/pass14
 Dataset Creation: Sun Mar 06 18:05:38 2011 by Log Open-Cased 100827

FRT Calibration Report

Serial Number: 31
 Tool Model: SONDEX
 Performed: Fri Feb 19 14:30:36 2010

| Point # | Reading | Reference |
|---------|-------------|-----------------|
| 1 | 0.731 cps | 1100.000 uS/cm |
| 2 | 116.541 cps | 10000.000 uS/cm |

| | | | | |
|----|----------|-----|-----------|-------|
| 3 | 401.744 | cps | 25000.000 | uS/cm |
| 4 | 1152.340 | cps | 50000.000 | uS/cm |
| 5 | | cps | | uS/cm |
| 6 | | cps | | uS/cm |
| 7 | | cps | | uS/cm |
| 8 | | cps | | uS/cm |
| 9 | | cps | | uS/cm |
| 10 | | cps | | uS/cm |

Temperature Calibration Report

Serial Number: 31
 Tool Model: SONDEX
 Performed: Fri Feb 19 14:24:21 2010

| Point # | Reading | | Reference | |
|---------|---------|-----|-----------|------|
| 1 | 119.10 | cps | 34.00 | degF |
| 2 | 334.81 | cps | 82.00 | degF |
| 3 | 698.66 | cps | 158.00 | degF |
| 4 | | cps | | degF |
| 5 | | cps | | degF |
| 6 | | cps | | degF |
| 7 | | cps | | degF |
| 8 | | cps | | degF |
| 9 | | cps | | degF |
| 10 | | cps | | degF |