

**YOUNGQUIST BROTHERS, Inc**  
GEOPHYSICAL LOGGING DIVISION

**FLUID CONDUCTIVITY TEMPERATURE LOG**  
2009 OCT 11 AM 10:49

Company ARCADIS  
Well MW-1  
Field KEY LARGO  
County MONROE  
State FLORIDA

Company ARCADIS  
Well MW-1  
Field KEY LARGO  
County MONROE  
State FLORIDA

Location: API #: SEE COMMENTS  
Other Services  
SEC TWP RGE Elevation  
Permanent Datum GL  
Log Measured From GL  
Drilling Measured From GL

Date 30-MAR-2009  
Run Number SIX  
Depth Driller 1700'  
Depth Logger 1703'  
Bottom Logged Interval 1703'  
Top Log Interval CASING  
Open Hole Size 12.25"  
Type Fluid WATER  
Density / Viscosity NA  
Max. Recorded Temp. NA  
Estimated Cement Top NA  
Time Well Ready 1530  
Time Logger on Bottom 1600  
Equipment Number 102  
Location FT. MYERS FULLER  
Recorded By L. KWAPINSKI  
Assessed By

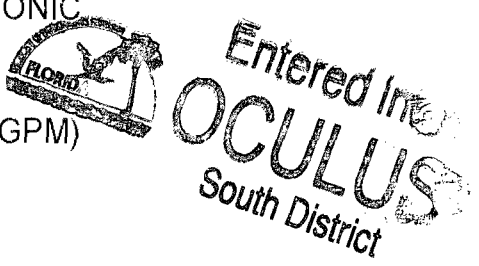
Borehole Record				Borehole Record			
Run Number	Bit	From	To	Run No.	Bit	From	To
ONE	42.5"	SURFACE	229'				
TWO	12.25"	CASING	1076'				
THREE	32.5"	CASING	1062'				
FOUR	12.25"	CASING	1703'				
Casing Record	Size	Weight		Top	Bottom		
Surface String	34"	375 W/T		SURFACE	225'		
Prot. String	24"	375 W/T		SURFACE	1058'		
Production String							
Inner							

<<< Fold Here >>>

All interpretations are opinions based on inferences from electrical or other measurements and we cannot and do not guarantee the accuracy or correctness of any interpretation, and we shall not, except in the case of gross or willful negligence on our part, be liable or responsible for any loss, costs, damages, or expenses incurred or sustained by anyone resulting from any interpretation made by any of our officers, agents or employees. These interpretations are also subject to our general terms and conditions set out in our current Price Schedule.

Comments

X-Y CALIPER/GAMMA RAY  
DUAL INDUCTION  
BOREHOLE COMPENSATED SONIC  
FLOW  
DYNAMIC FLOW RATE = (265 GPM)



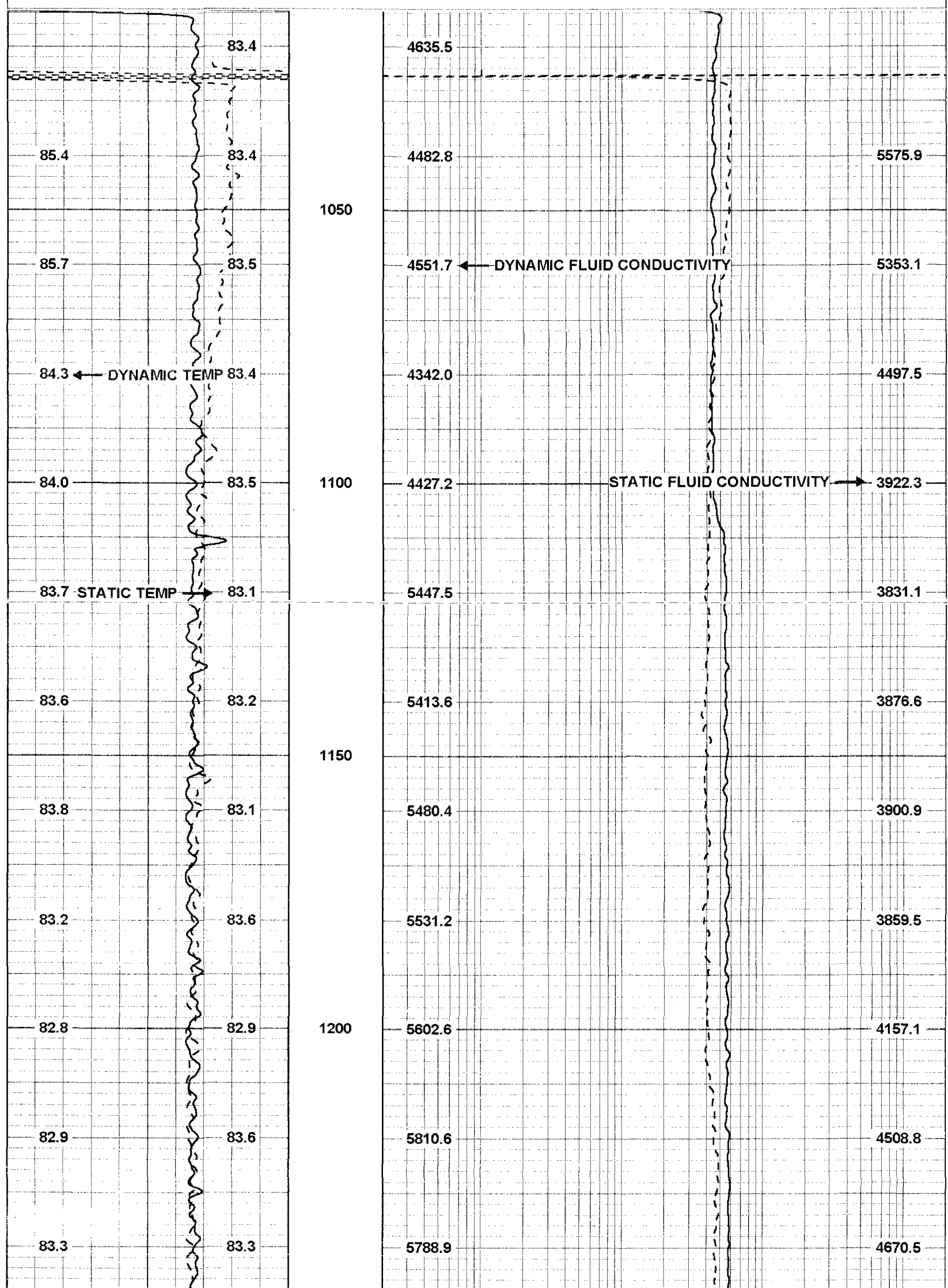
**YOUNGQUIST BROTHERS, Inc**  
GEOPHYSICAL LOGGING DIVISION

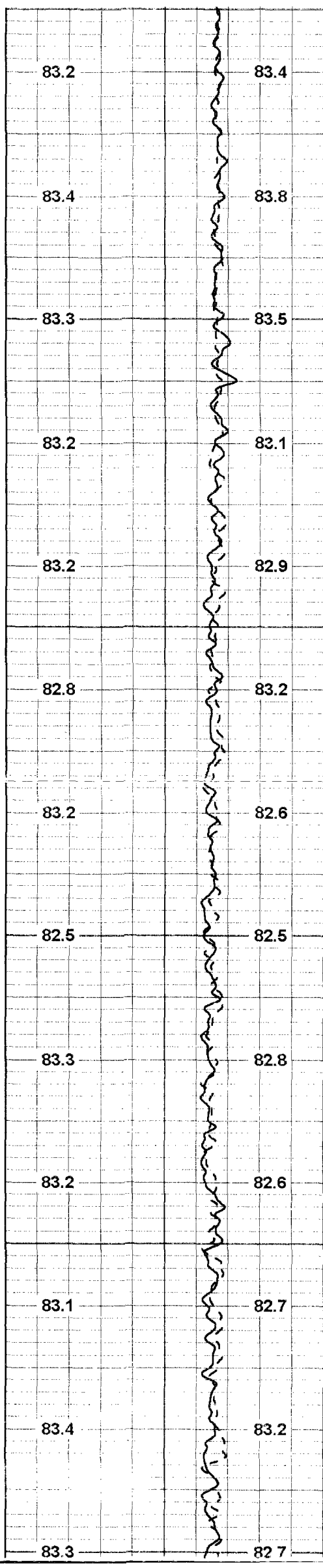
**DYNAMIC FCT**

Database File: largomw1.db  
Dataset Pathname: run6/pass9  
Presentation Format: frt\_mg  
Dataset Creation: Tue Mar 31 04:39:43 2009 by Log 6.2\_B4  
Charted by: Depth in Feet scaled 1:240

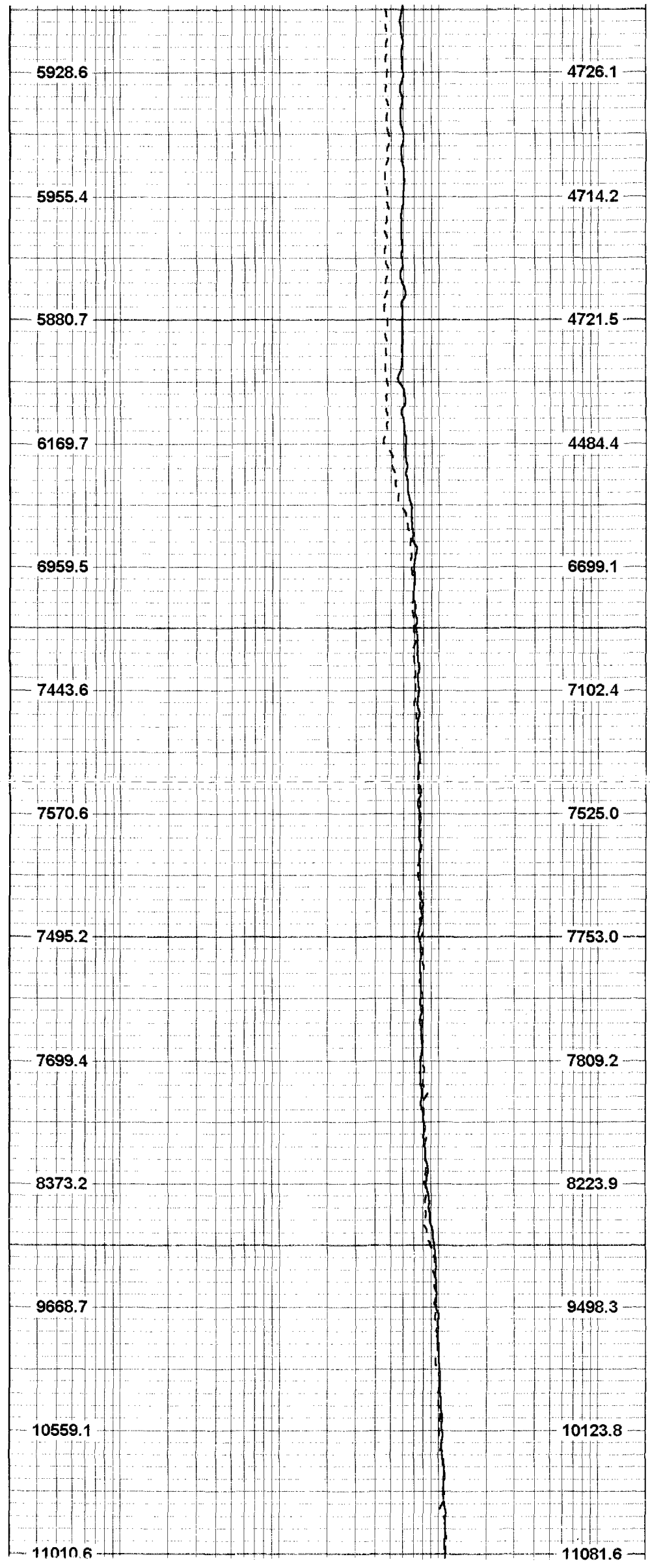
70	DYNAMIC TEMP (degF)	90	20	DYNAMIC FLUID CONDUCTIVITY (uS)	200000
70	STATIC TEMP (degF)	90	20	STATIC FLUID CONDUCTIVITY (uS)	200000

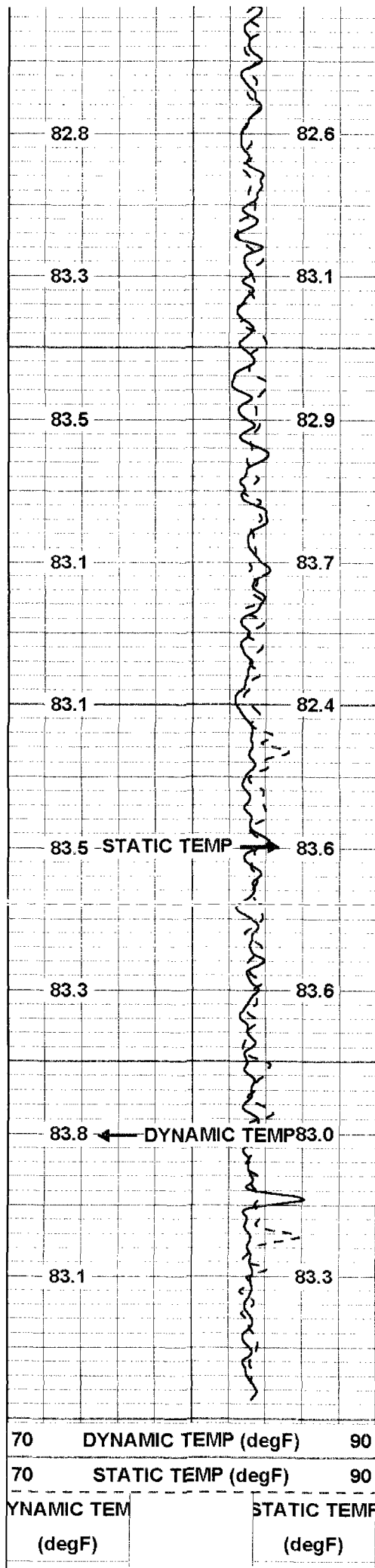
DYNAMIC TEM (degF)	STATIC TEM (degF)	FLUID COND	FLUID CONDU
--------------------	-------------------	------------	-------------



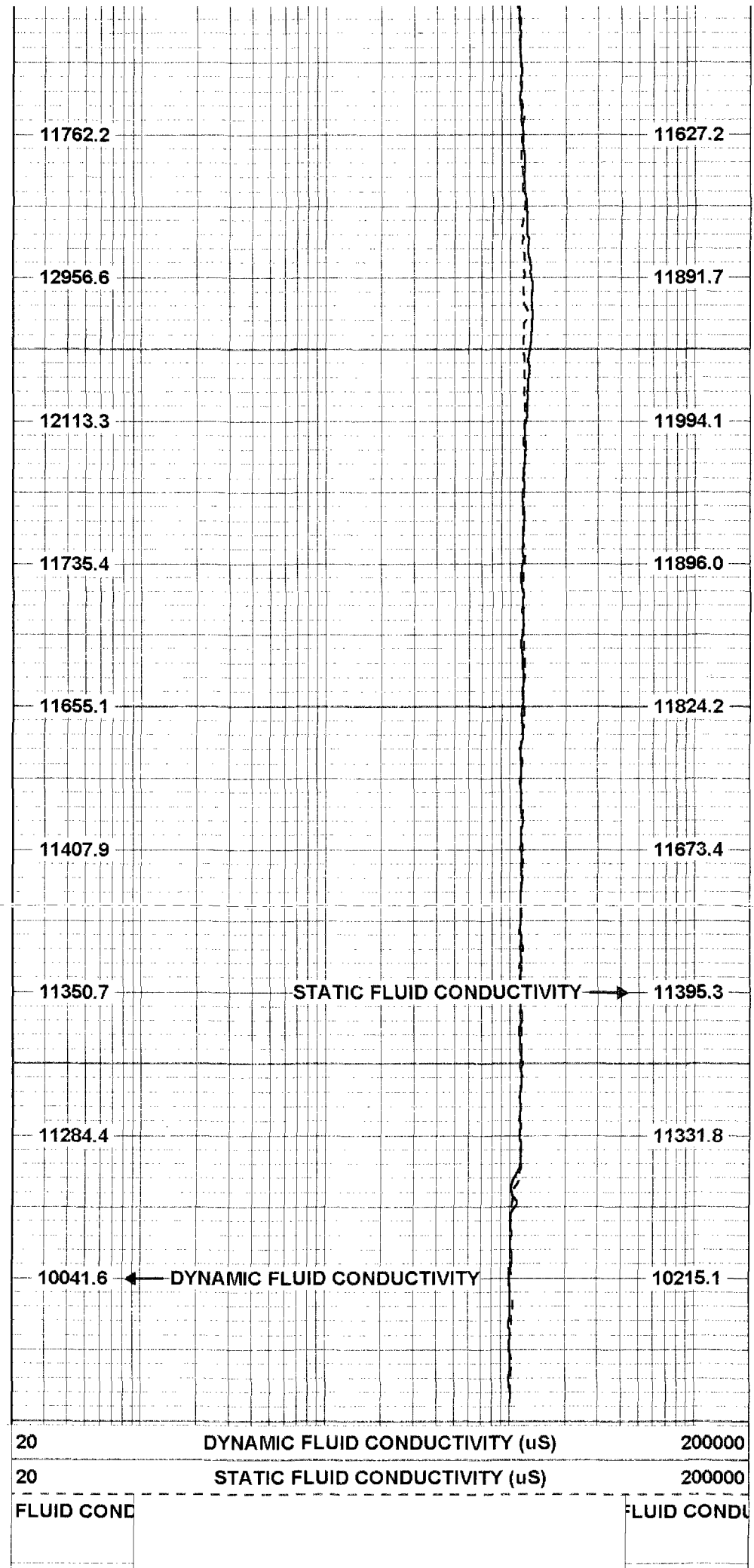


1250  
1300  
1350  
1400  
1450  
1500





1550  
1600  
1650  
1700



20 DYNAMIC FLUID CONDUCTIVITY (uS) 200000  
20 STATIC FLUID CONDUCTIVITY (uS) 200000

Sensor	Offset (ft)	Schematic	Description	Len (ft)	OD (in)	Wt (lb)
			TEMP-SONDEX (30)	1.20	1.63	10.00

TEMP 0.70  
FRES 0.50

FRT-SONDEX (30)

0.60

1.69

10.00

Dataset: largomw1.db: field/well/run6/pass9  
Total Length: 1.80 ft  
Total Weight: 20.00 lb  
O.D. 1.69 in

Calibration Report

Database File: largomw1.db  
Dataset Pathname: run6/pass9  
Dataset Creation: Tue Mar 31 04:39:43 2009 by Log 6.2\_B4

Temperature Calibration Report

Serial Number: 30  
Tool Model: SONDEX  
Performed: Wed May 28 17:31:07 2008

Point #	Reading		Reference	
1	148.879	cps	39	degF
2	347.752	cps	85	degF
3	741.715	cps	165	degF
4		cps		degF
5		cps		degF
6		cps		degF
7		cps		degF
8		cps		degF
9		cps		degF
10		cps		degF