



YOUNGQUIST BROTHERS, Inc.
GEOPHYSICAL LOGGING DIVISION

FLUID CONDUCTIVITY TEMPERATURE LOG

2008 OCT 11 10:47

Company ARCADIS
Well IW-1
Field KEY LARGO
County MONROE
State FLORIDA

Company ARCADIS
Well IW-1
Field KEY LARGO
County MONROE
State FLORIDA

Location:	API #:	Other Services
SEC	TWP	SEE COMMENTS
RGE	Elevation	Elevation
Permanent Datum	GL	K.B.
Log Measured From	GL	D.F.
Drilling Measured From	GL	GL

Date	20-DEC-2008	
Run Number	SIX	
Depth Driller	1746'	
Depth Logger	1746'	
Bottom Logged Interval	1746'	
Top Log Interval	CASING	
Open Hole Size	12.25"	
Type Fluid	WATER	
Density / Viscosity	NA	
Max. Recorded Temp.	NA	
Estimated Cement Top	NA	
Time Well Ready	1300	
Time Logger on Bottom	1330	
Equipment Number	103	
Location	FT. MYERS	
Recorded By	CATHEY	
Witnessed By	L. KWAPINSKI	

Borehole Record		Borehole Record	
Run Number	Bit From To	Run No.	Bit From To
ONE	60.5" SURFACE 227'		
TWO	12.25" CASING 1160'		
THREE	46.50" CASING 1071'		
FOUR	12.25" CASING 1746'		
Casing Record	Size	Wgt/Ft	Bottom
Surface String	52"	375 W.T.	223'
Prot. String	36"	375 W.T.	1066'
Production String			
Liner			

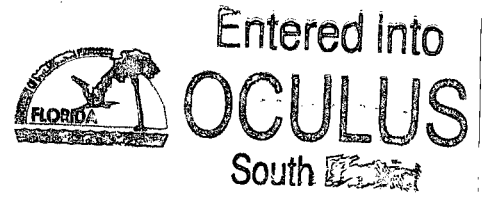
<<< Fold Here >>>

All interpretations are opinions based on inferences from electrical or other measurements and we cannot and do not guarantee the accuracy or correctness of any interpretation, and we shall not, except in the case of gross or willful negligence on our part, be liable or responsible for any loss, costs, damages, or expenses incurred or sustained by anyone resulting from any interpretation made by any of our officers, agents or employees. These interpretations are also subject to our general terms and conditions set out in our current Price Schedule.

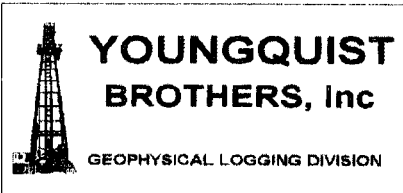
Comments

OTHER SERVICES:

X-Y CALIPER / GAMMA RAY
DUAL INDUCTION
SONIC
BOREHOLE TELEVIEWER
FLOWMETER



DYNAMIC FLOWRATE = 240 GPM

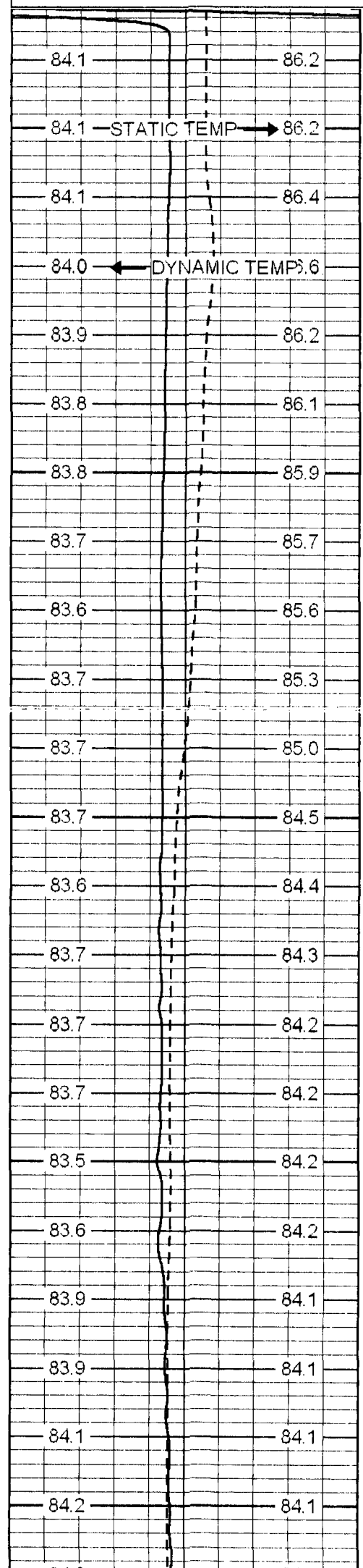


MERGED FCT

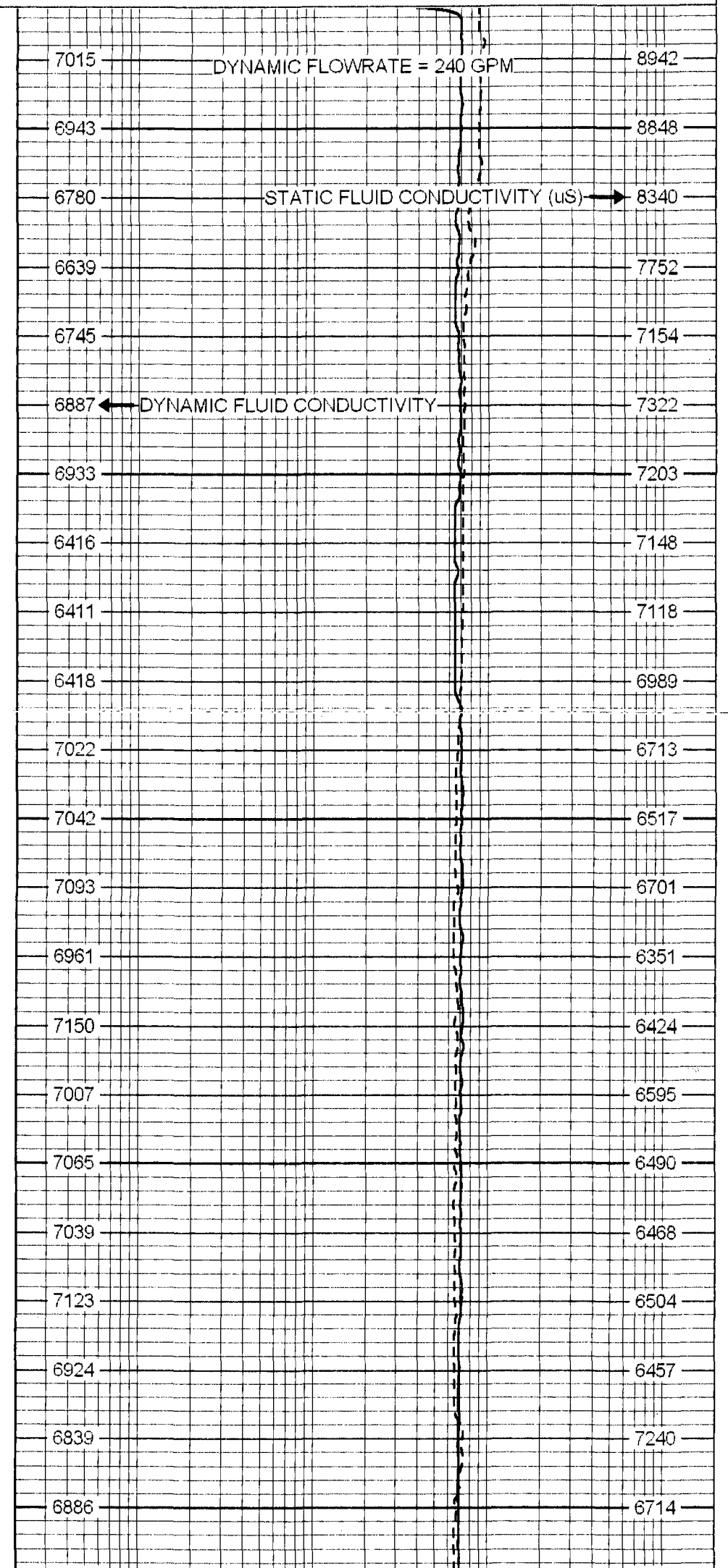
Database File: keyloiw1.db
Dataset Pathname: run6/pass13
Presentation Format: frt_mg
Dataset Creation: Sat Dec 20 21:48:30 2008 by Log 6.2_B4
Charted by: Depth in Feet scaled 1:240

DYNAMIC TEM (degF) 75
 STATIC TEM (degF) 95
 DYNAMIC TEM (degF)
 STATIC TEM (degF)

DYNAMIC FLUID CONDUCTIVITY (uS) 20
 STATIC FLUID CONDUCTIVITY (uS) 200000
 FLUID CONDU
 FLUID COND



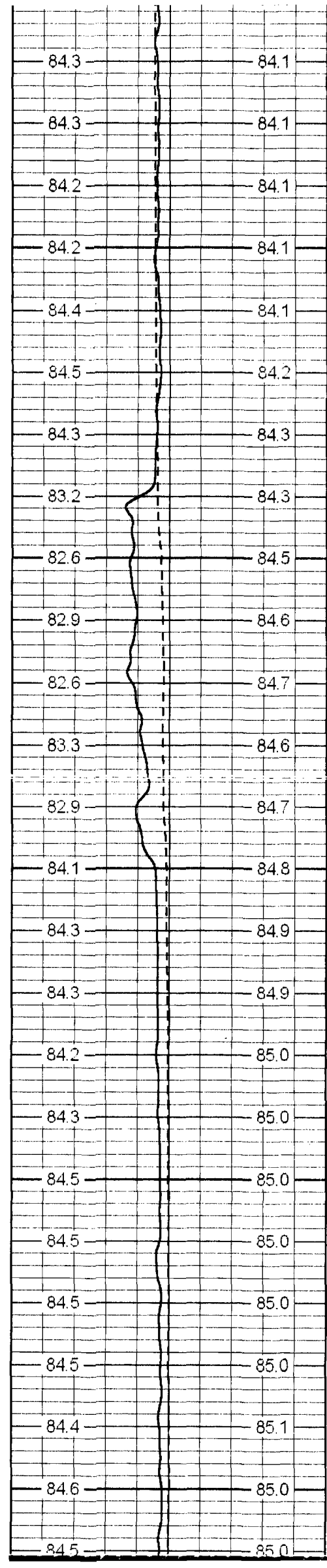
1050
 1100
 1150
 1200
 1250



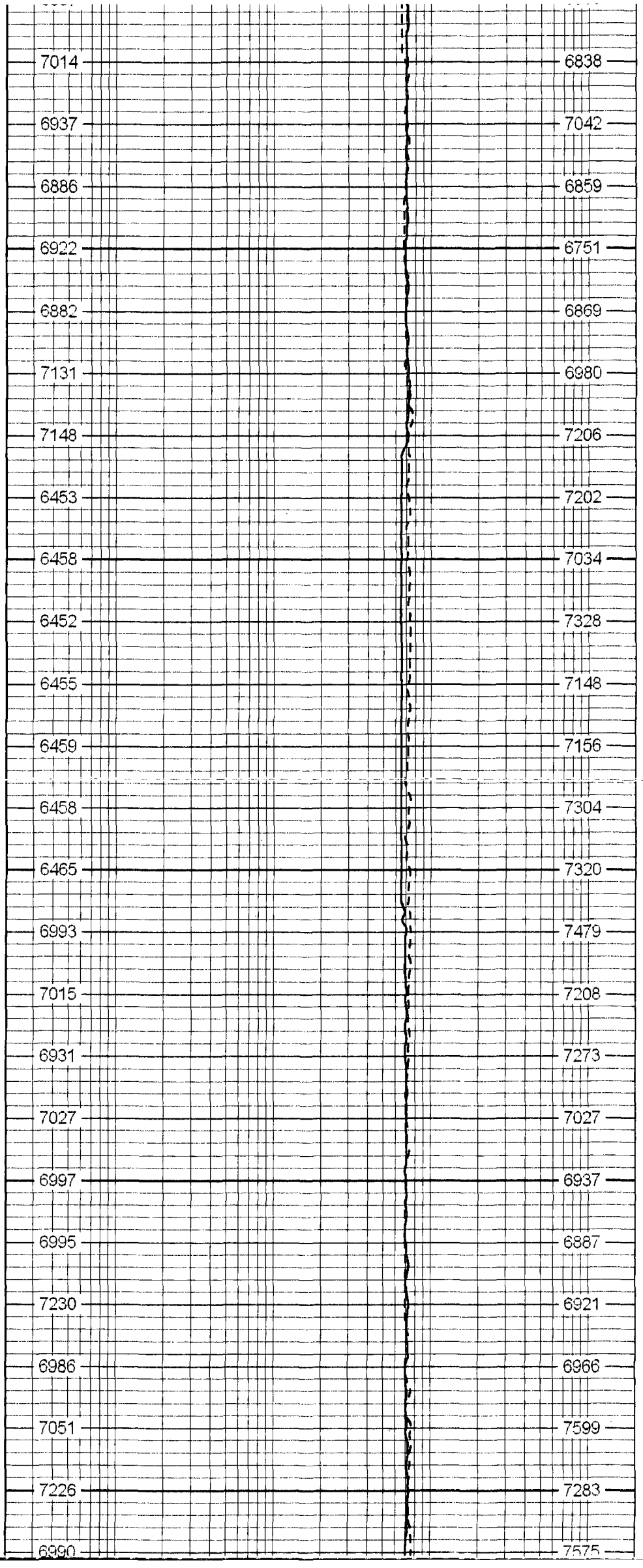
DYNAMIC FLOWRATE = 240 GPM

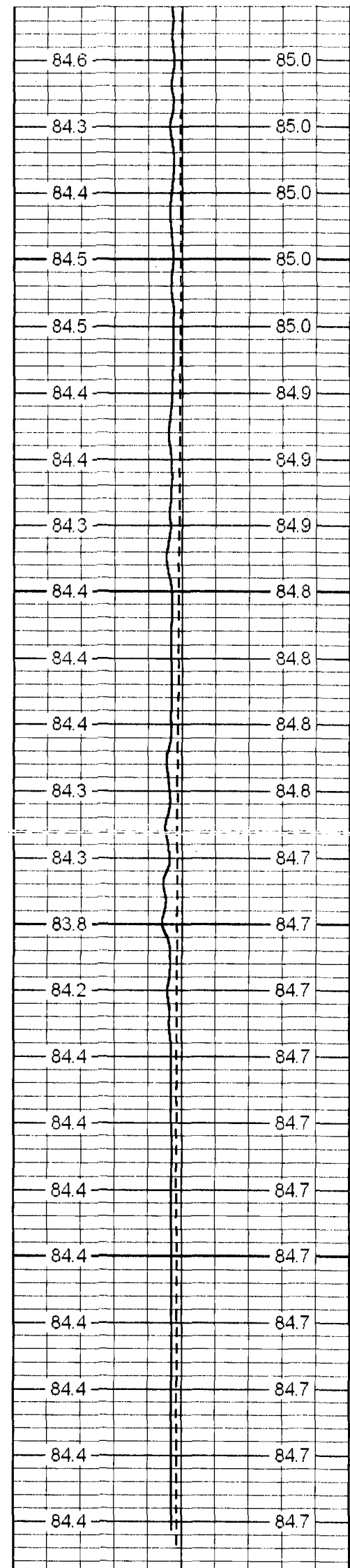
STATIC FLUID CONDUCTIVITY (uS)

DYNAMIC FLUID CONDUCTIVITY



1300
1350
1400
1450
1500



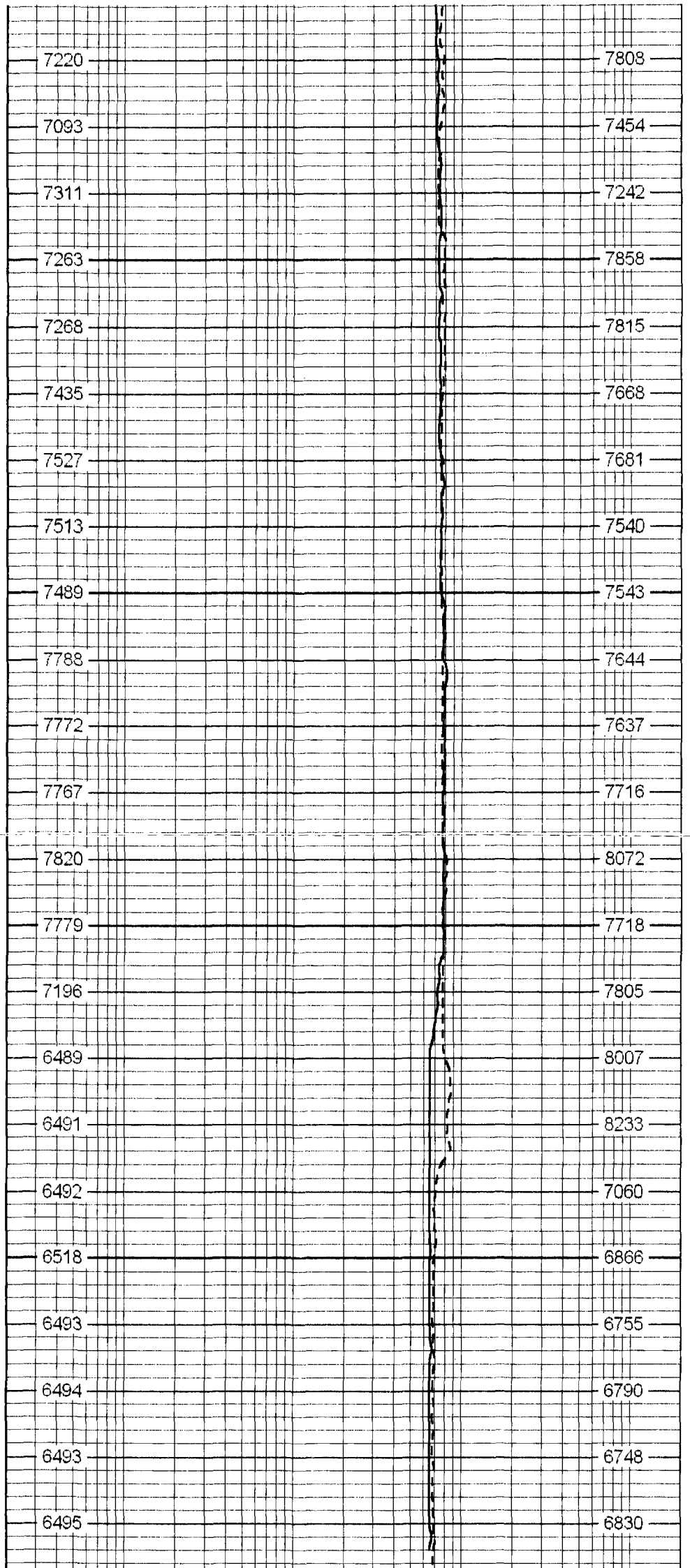


1550

1600

1650

1700



75 DYNAMIC TEMP (degF) 95
 75 STATIC TEMP (degF) 95
 DYNAMIC TEM STATIC TEMF

20 DYNAMIC FLUID CONDUCTIVITY (uS) 200000
 20 STATIC FLUID CONDUCTIVITY (uS) 200000
 FLUID CONDU FLUID COND

(degF)

(degF)

Calibration Report

Database File: keyloiw1.db
 Dataset Pathname: run6/pass13
 Dataset Creation: Sat Dec 20 21:48:30 2008 by Log 6.2_B4

Temperature Calibration Report

Serial Number: 31
 Tool Model: SONDEX
 Performed: Mon Jun 09 10:53:33 2008

Point #	Reading		Reference	
1	152.99	cps	39	degF
2	330.989	cps	82	degF
3	688.237	cps	157	degF
4		cps		degF
5		cps		degF
6		cps		degF
7		cps		degF
8		cps		degF
9		cps		degF
10		cps		degF

Sensor	Offset (ft)	Schematic	Description	Len (ft)	OD (in)	Wt (lb)
			TEMP-SONDEX (31)	1.20	1.63	10.00
TEMP FRES	0.70 0.50		FRT-SONDEX (31)	0.60	1.69	10.00
		Dataset: keyloiw1.db: field/well/run6/pass13 Total Length: 1.80 ft Total Weight: 20.00 lb O.D.: 1.69 in				