

# YOUNGQUIST BROTHERS, Inc

GEOPHYSICAL LOGGING DIVISION

## HIGH RESOLUTION TEMPERATURE LOG

Company **CAMP DRESSER & McKEE INC**  
Well **CONCENTRATE IW-1**  
Field **CITY OF CLEWISTON RO WTP**  
County **HENDRY**  
State **FLORIDA**

Company **CAMP DRESSER & McKEE INC.**  
Well **CONCENTRATE IW-1**  
Field **CITY OF CLEWISTON RO WTP**  
County **HENDRY** State **FLORIDA**

Location			
Permanent Datum	PAD	Elevation	
Log Measured From	PAD	K.B.	
Drilling Measured From	PAD	D.F.	
		G.L.	

Other Services  
**SEE COMMENTS**

Date	03-OCT-2006	
Run Number	MIT '06	
Depth Driller	3505'	
Depth Logger	3505'	
Bottom Logged Interval	3505'	
Top Log Interval	SURFACE	
Open Hole Size	14.75"	
Type Fluid	WATER	
Density / Viscosity	NA	
Max. Recorded Temp.	93 DEGF	
Estimated Cement Top	NA	
Time Well Ready	RRIVAL	
Time Logger on Bottom	0000	
Equipment Number	101	
Location	FT. MYERS	
Recorded By	LEE	
Witnessed By	A. MILLER	

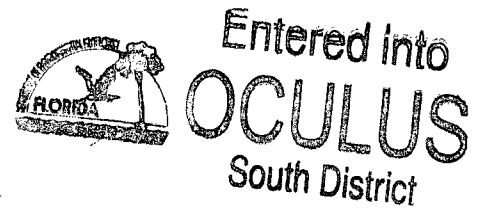

Run Number	Borehole Record		Run No.	Borehole Record	
	Bit	From		Bit	To
ONE	58"	SURFACE	253'	FIVE	34.5
TWO	12.25"	CASING	1000'	SIX	12.25"
THREE	46.5"	CASING	979'	SEVEN	12.25"
FOUR	12.25"	CASING	2100'	EIGHT	14.75"
Casing Record	Size	Wd/Ft	Top	Bottom	
Surface String	48"	375 W.T.	SURFACE	248'	
Prod. String	36"	375" W.T.	SURFACE	975'	
Production String	26"	375 W.T.	SURFACE	2105'	
Liner	16"	500" W.T.	SURFACE	2750'	

<<< Fold Here >>>

All interpretations are opinions based on inferences from electrical or other measurements and we cannot and do not guarantee the accuracy or correctness of any interpretation, and we shall not, except in the case of gross or willful negligence on our part, be liable or responsible for any loss, costs, damages, or expenses incurred or sustained by anyone resulting from any interpretation made by any of our officers, agents or employees. These interpretations are also subject to our general terms and conditions set out in our current Price Schedule.

### Comments

RTS

**YOUNGQUIST  
BROTHERS, Inc**  
GEOPHYSICAL LOGGING DIVISION

# TEMPERATURE

Database File: clew1rts.db  
Dataset Pathname: TEMPMP  
Presentation Format: temp  
Dataset Creation: Tue Oct 03 08:37:41 2006

80

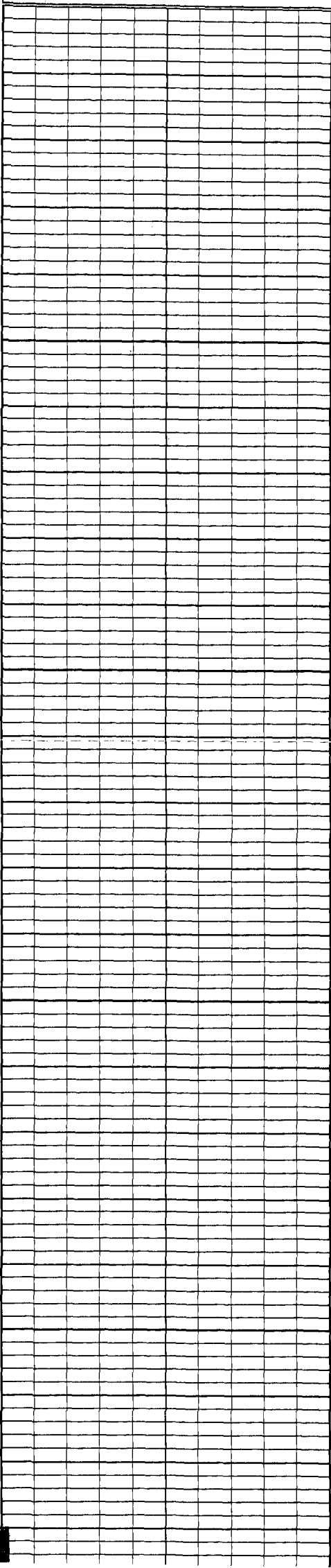
TEMPERATURE (degF)

100

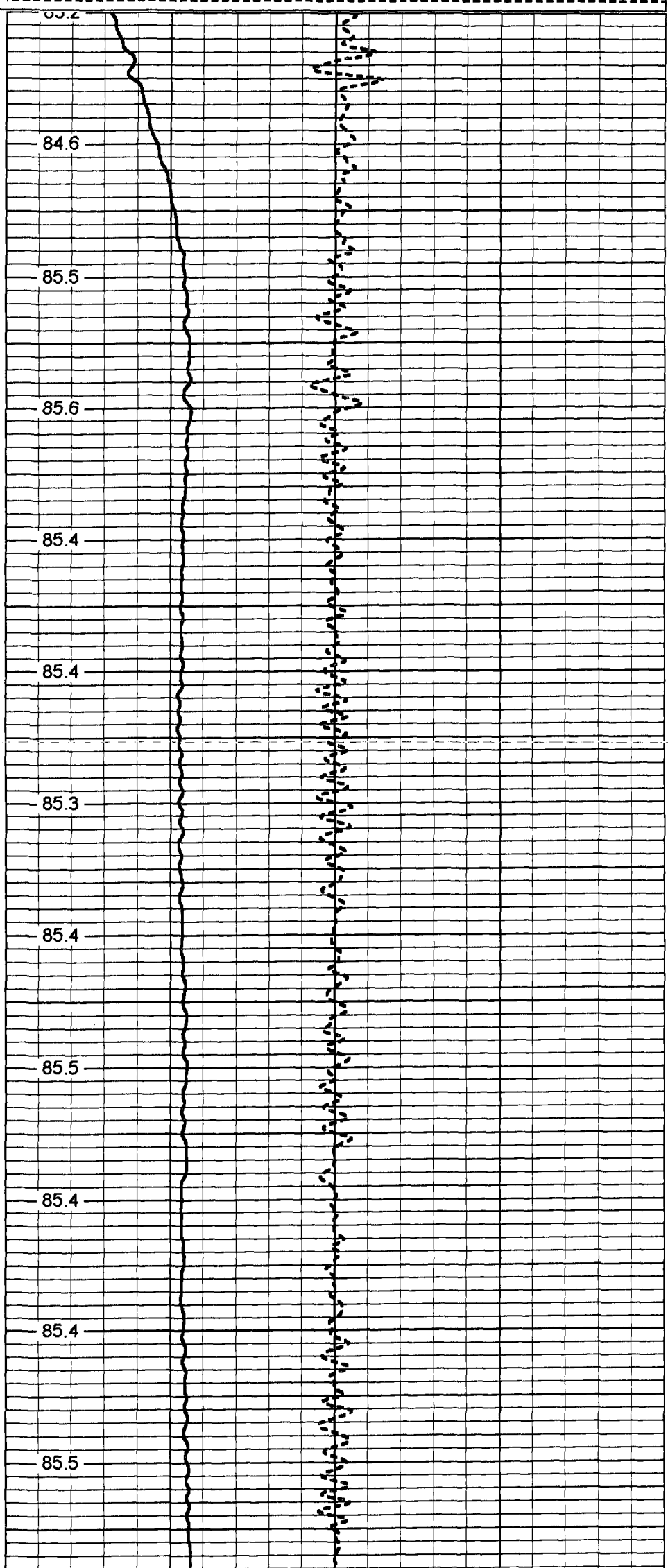
-2

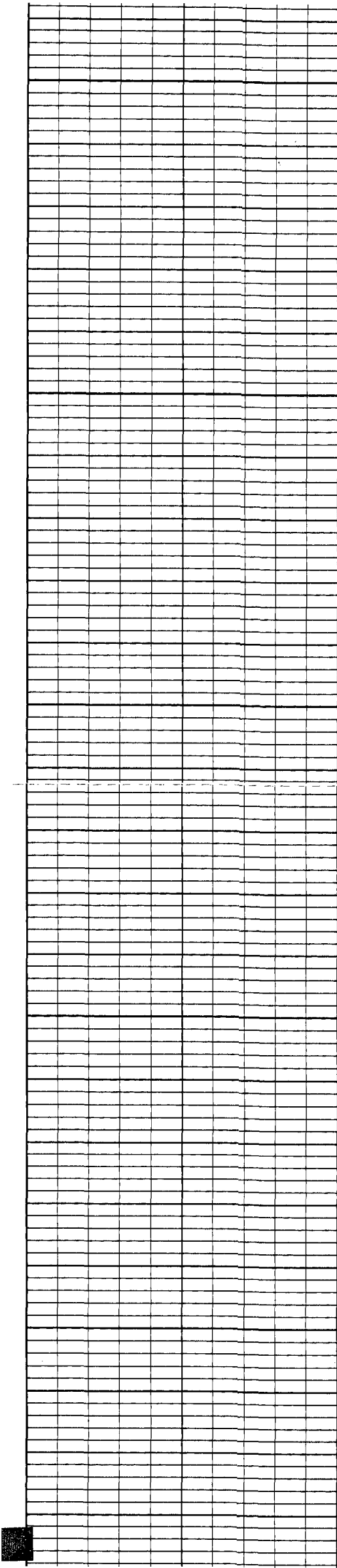
DELTA TEMPERATURE (degF)

2



0  
50  
100  
150  
200





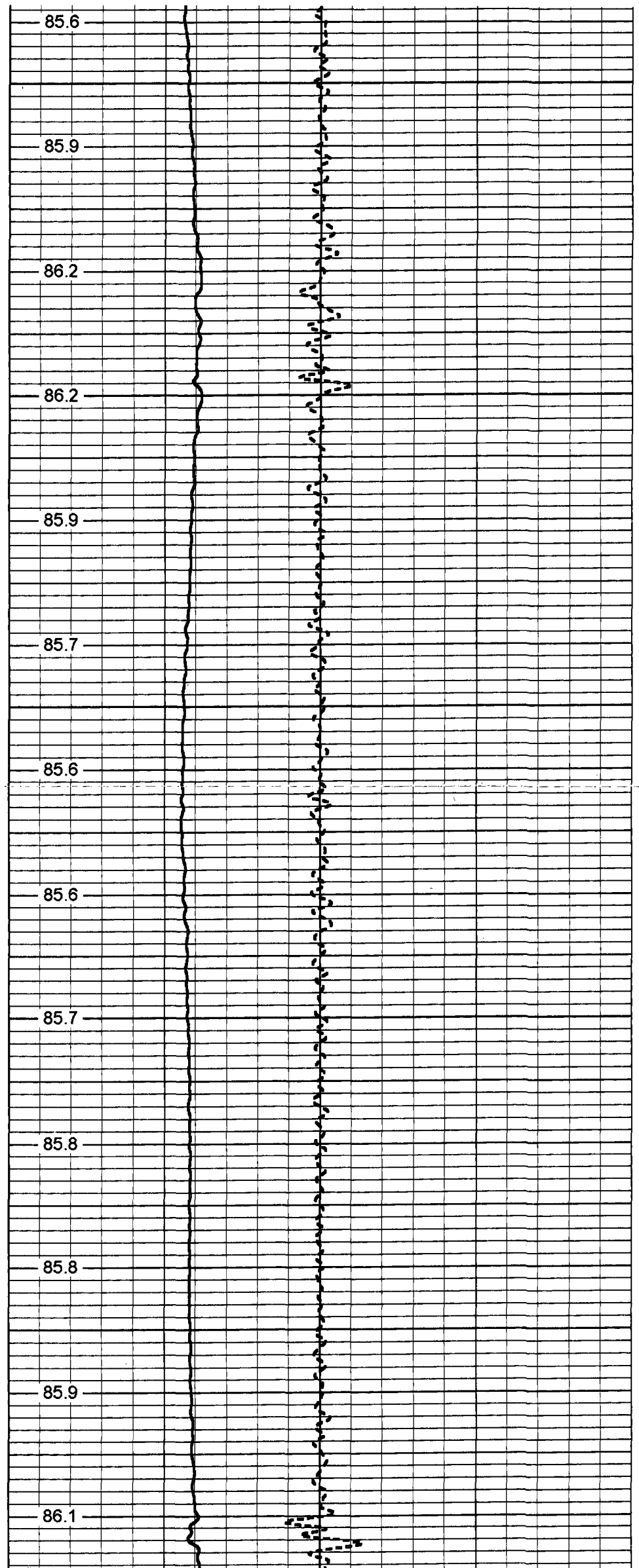
250

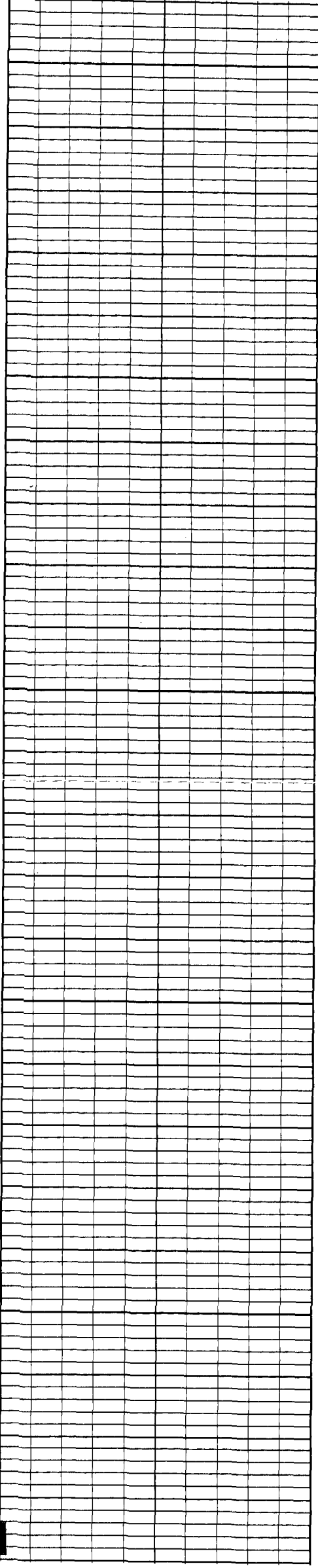
300

350

400

450





500

550

600

650

700

86.3

86.4

86.4

86.4

86.3

86.4

86.5

86.5

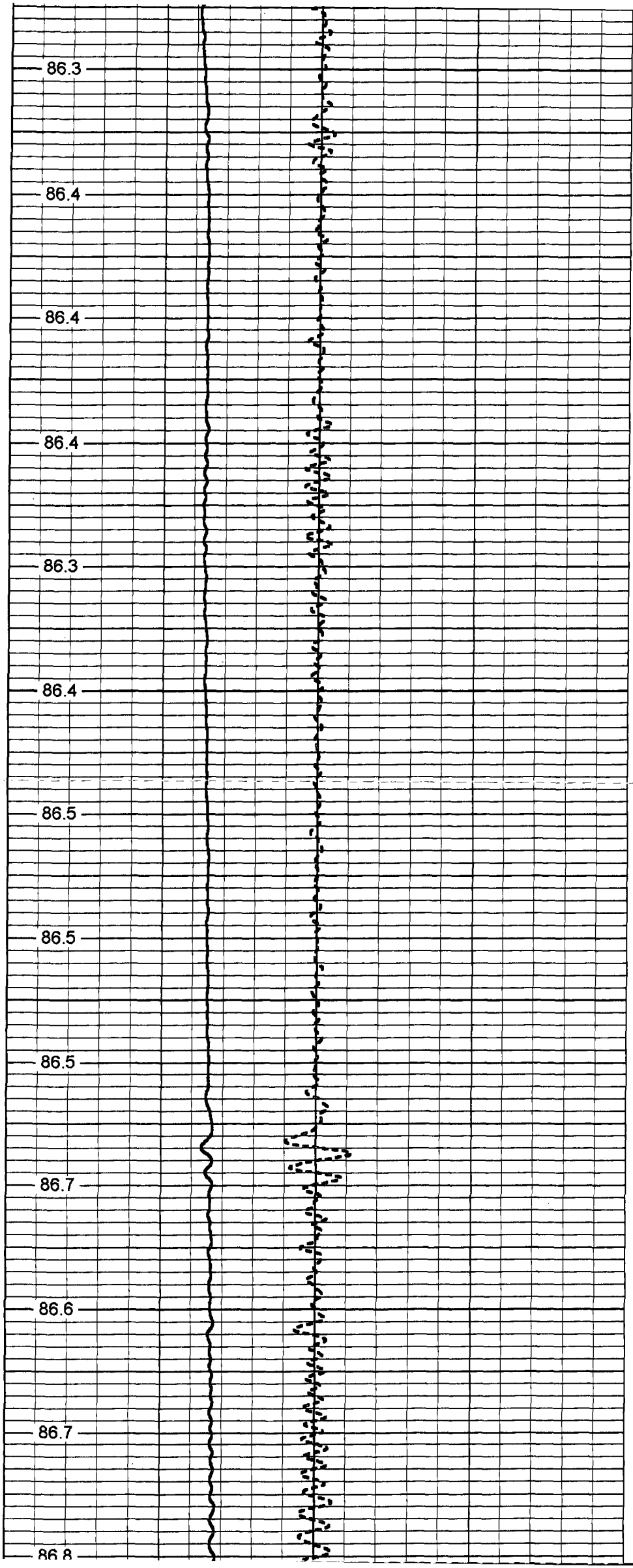
86.5

86.7

86.6

86.7

86.8



750

86.8

86.9

800

86.7

86.9

86.7

850

86.7

86.7

900

86.8

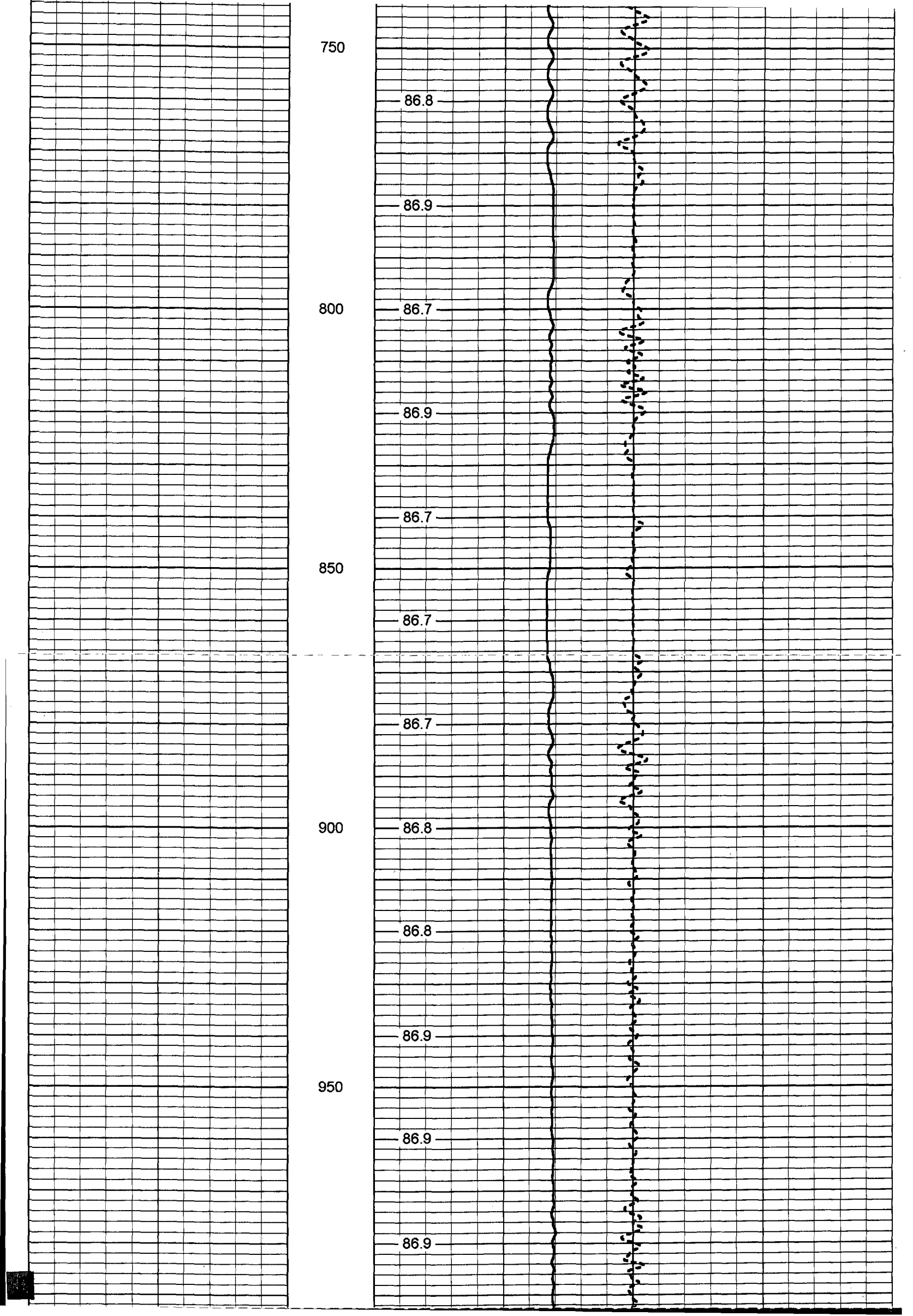
86.8

86.9

950

86.9

86.9



1000

87.0

87.1

87.1

1050

87.1

87.0

1100

87.1

87.1

87.1

1150

87.1

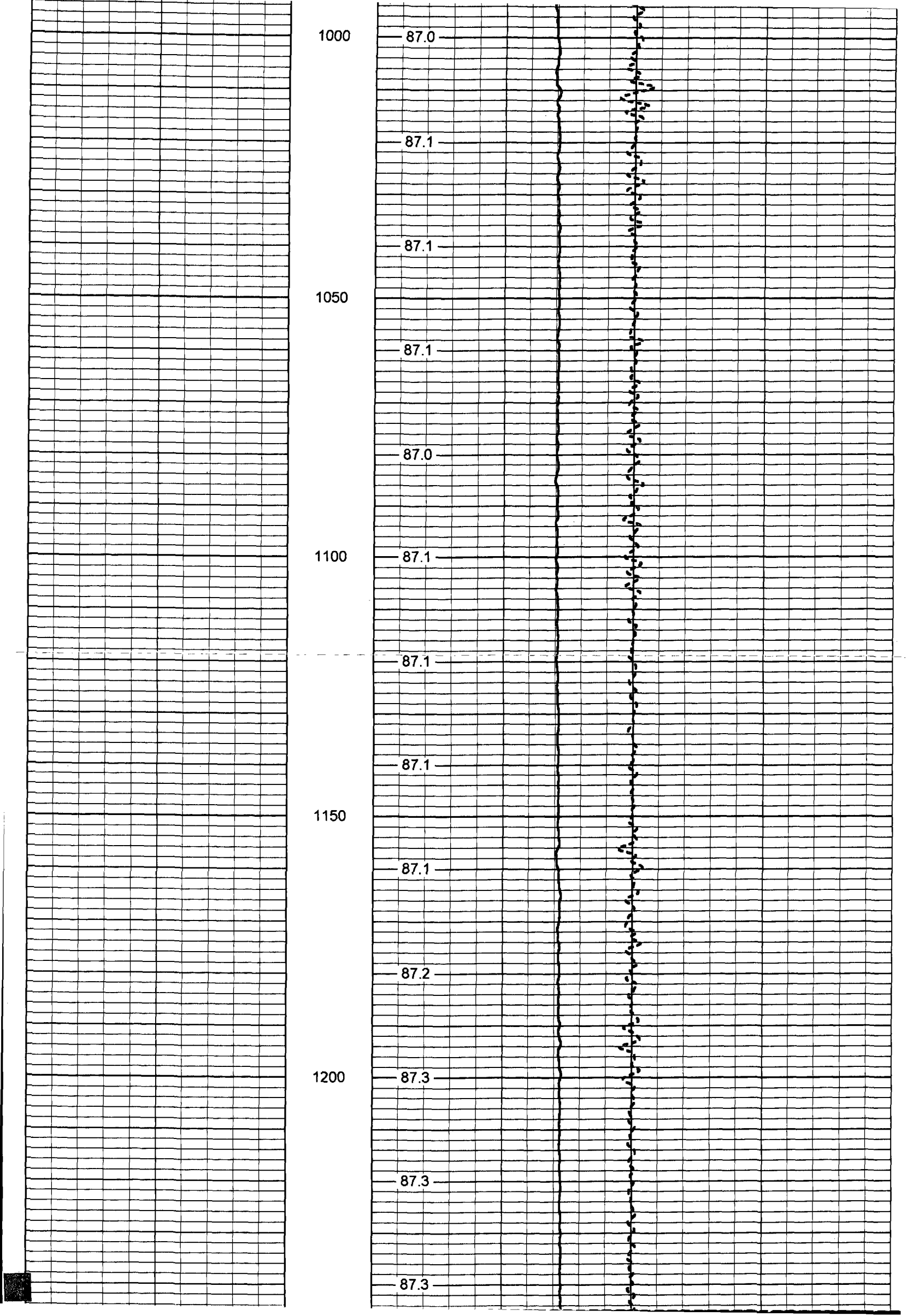
87.2

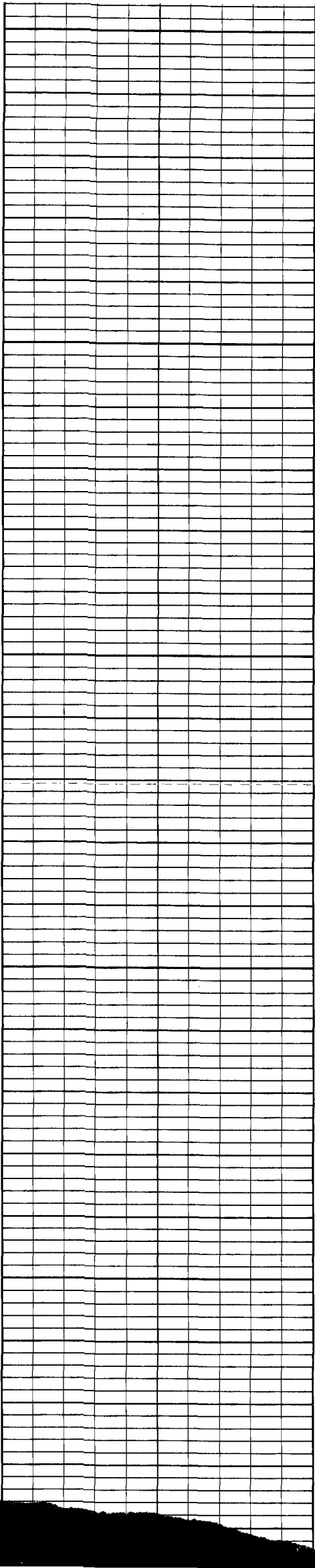
1200

87.3

87.3

87.3





1250

87.3

87.3

1300

87.3

87.4

87.3

1350

87.4

87.5

1400

87.5

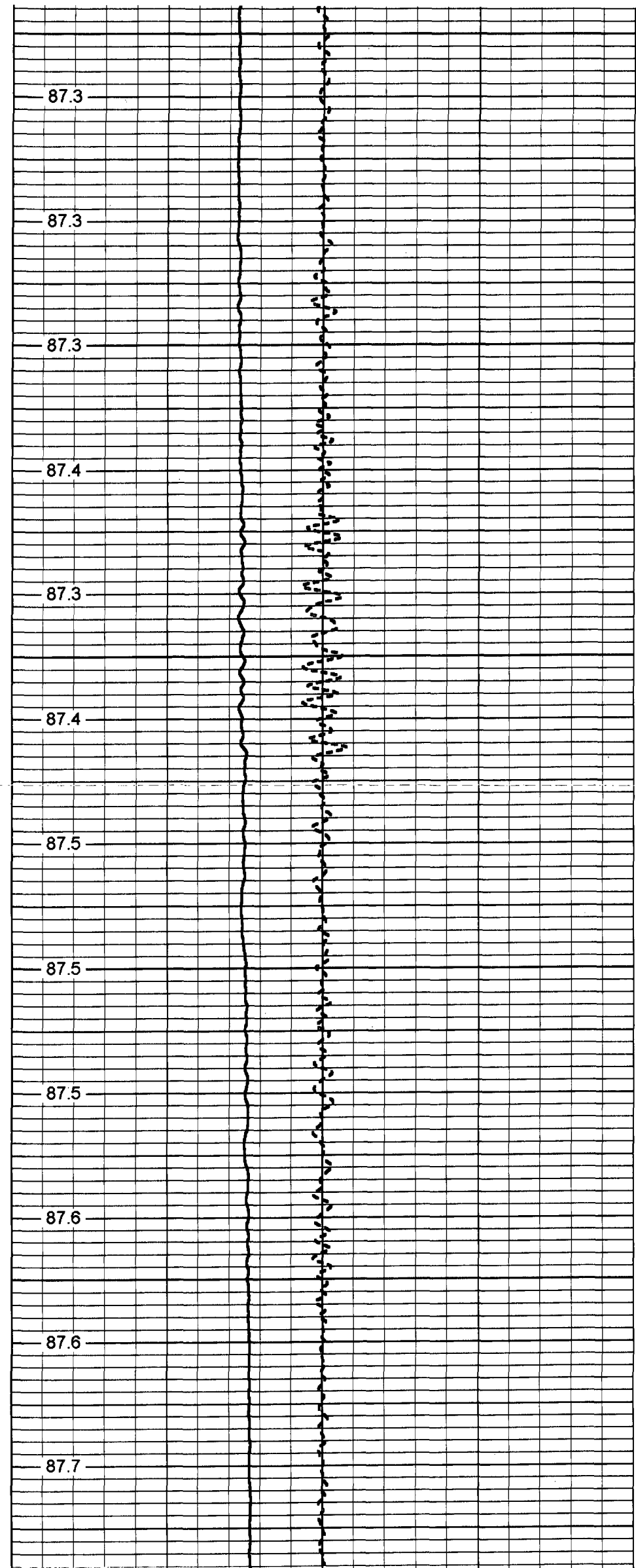
87.5

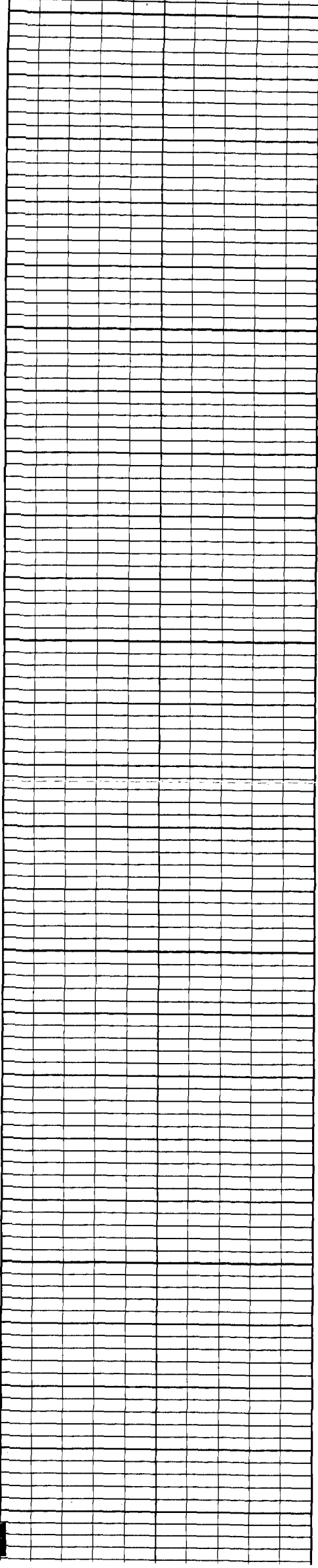
87.6

1450

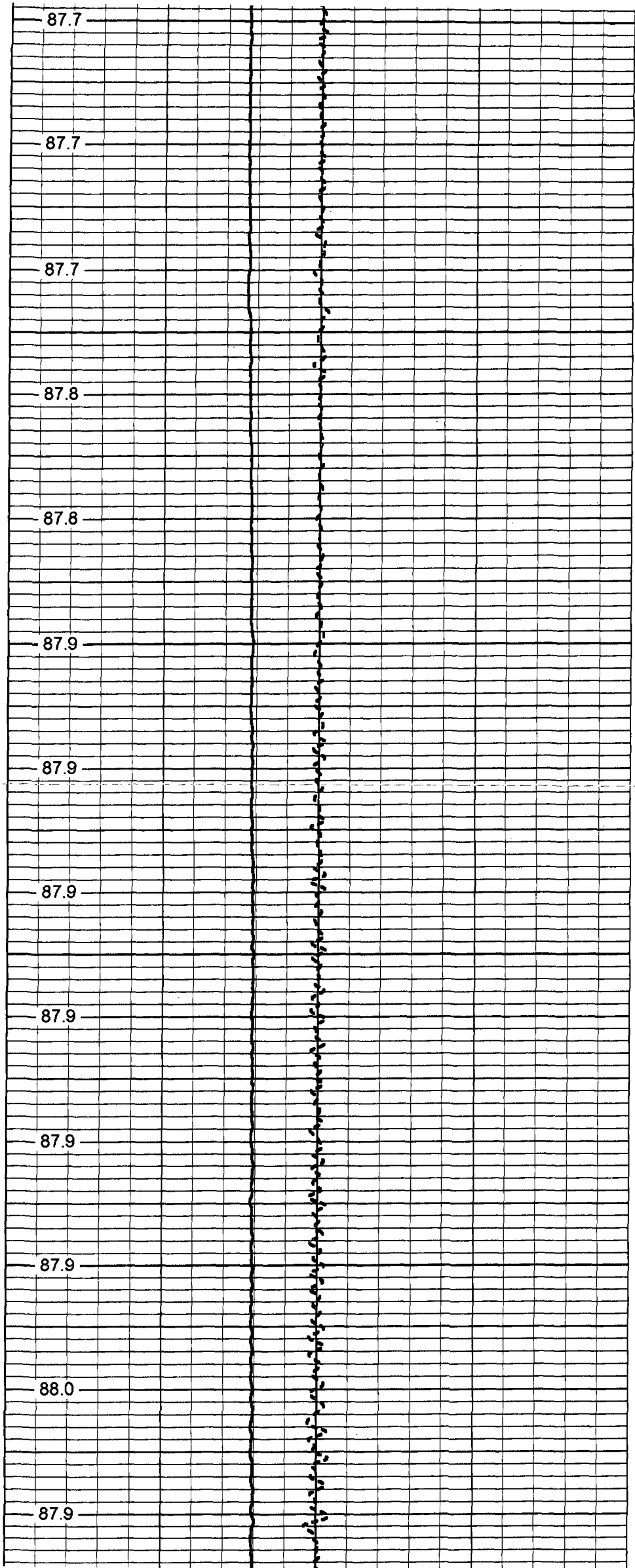
87.6

87.7



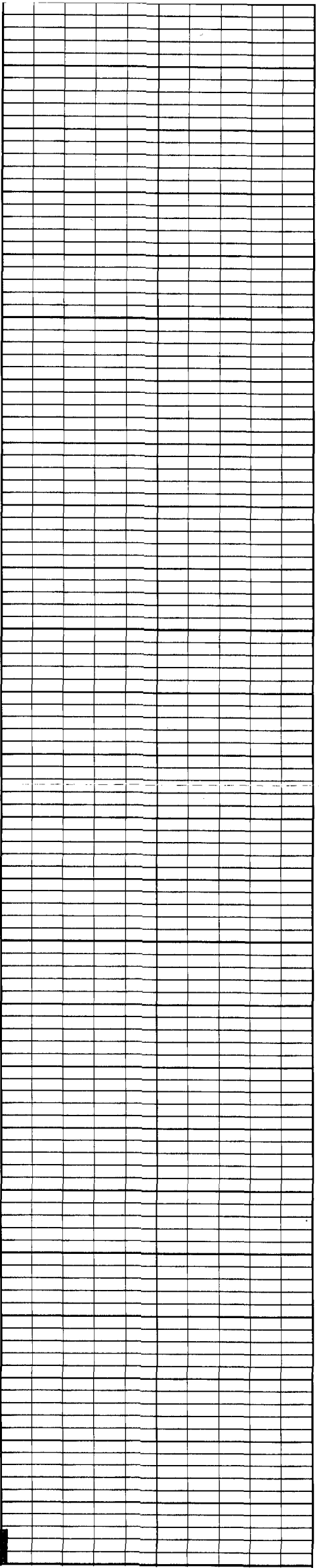


1500  
1550  
1600  
1650  
1700





1750



1800

1850

1900

1950

2000

88.0

88.0

88.0

88.0

88.1

88.1

88.2

88.3

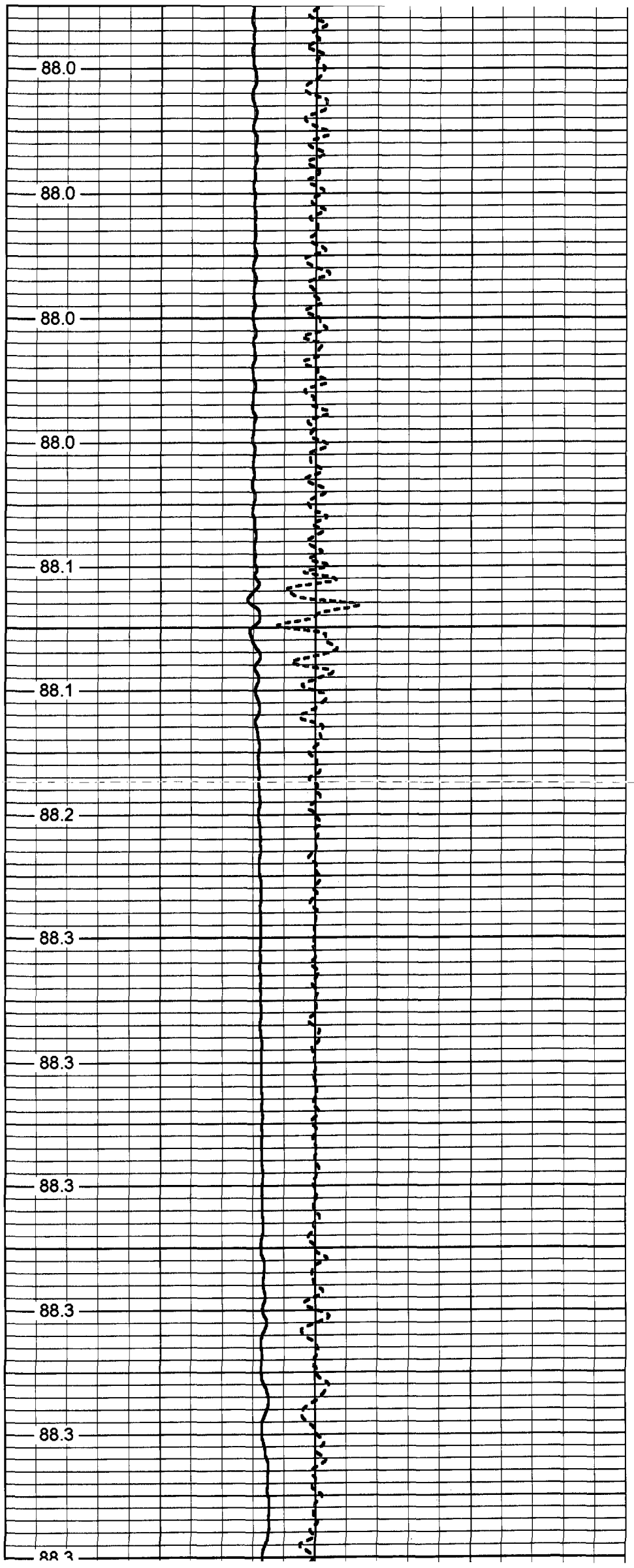
88.3

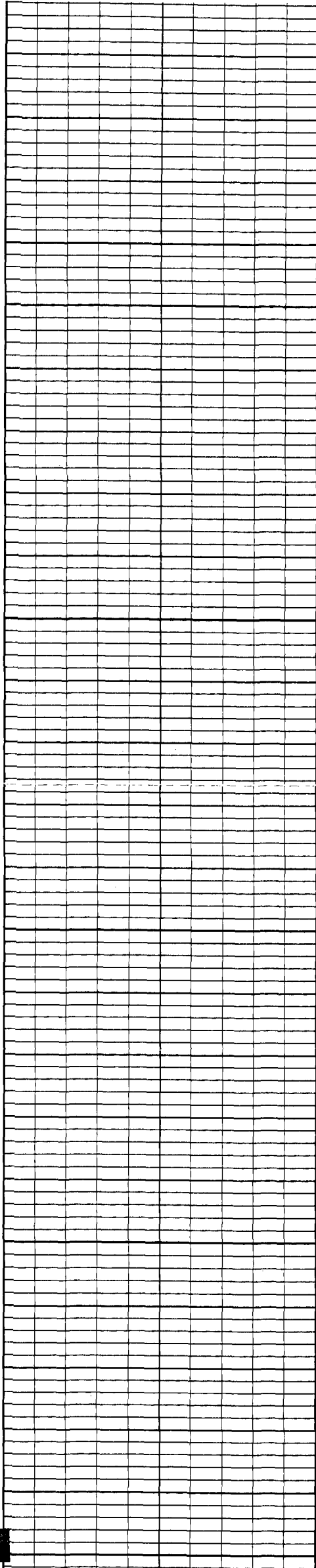
88.3

88.3

88.3

88.3





2050

2100

2150

2200

2250

88.4

88.4

88.4

88.4

88.4

88.5

88.4

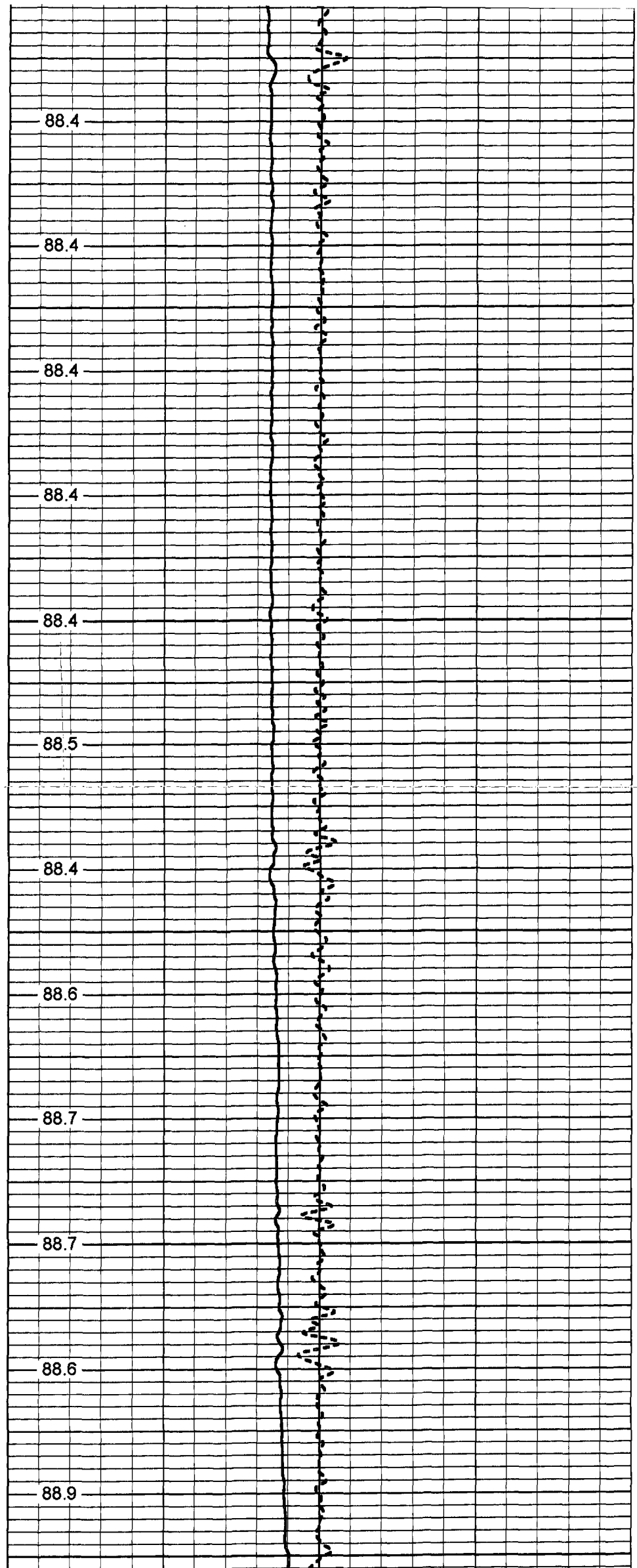
88.6

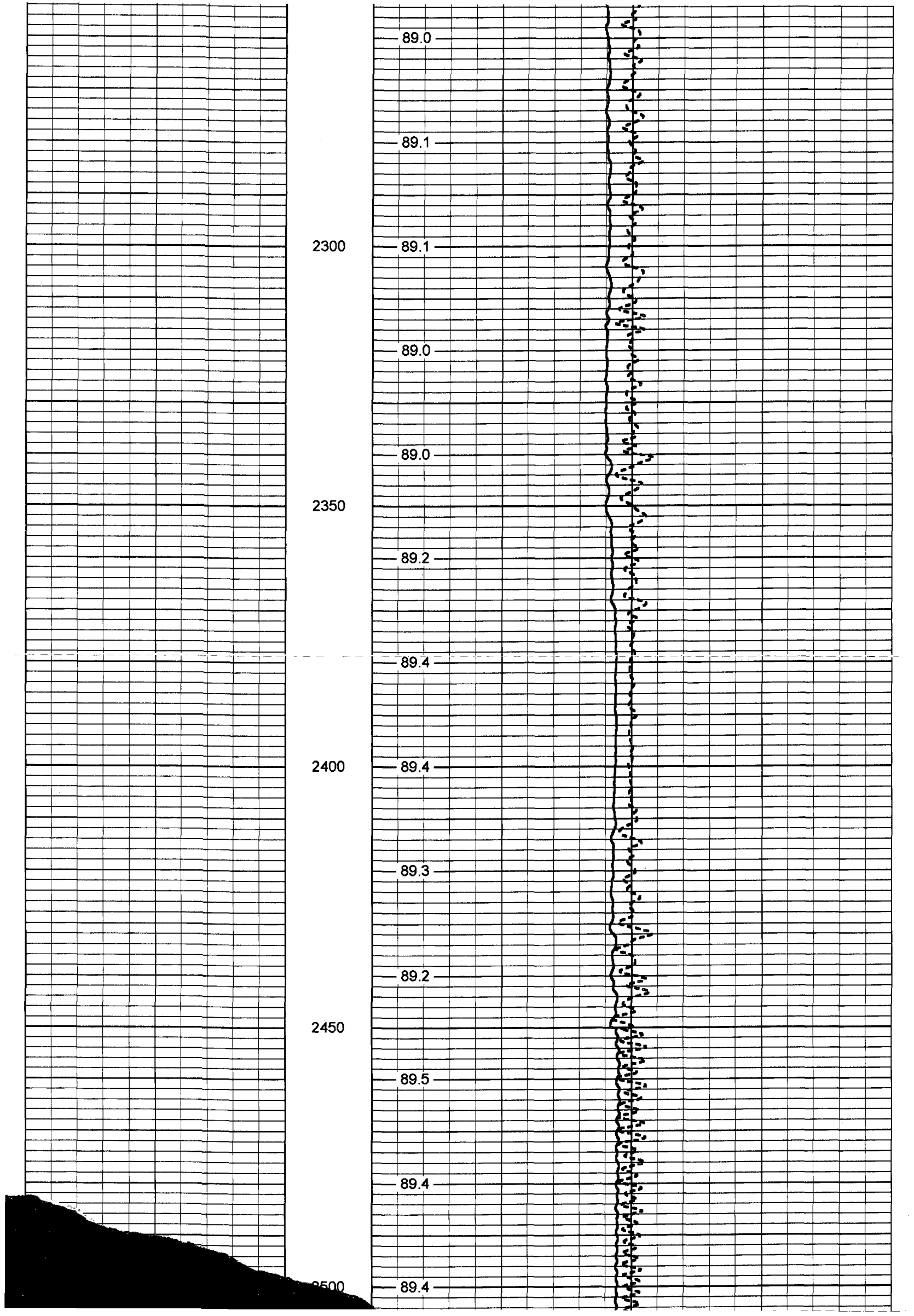
88.7

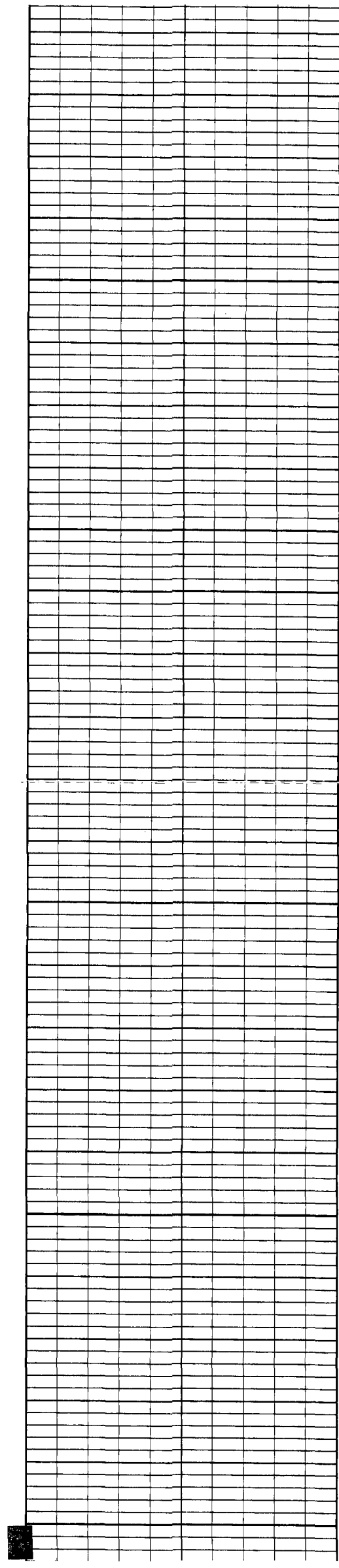
88.7

88.6

88.9







2550

2600

2650

2700

2750

89.4

89.5

89.6

89.6

89.5

89.5

89.5

89.6

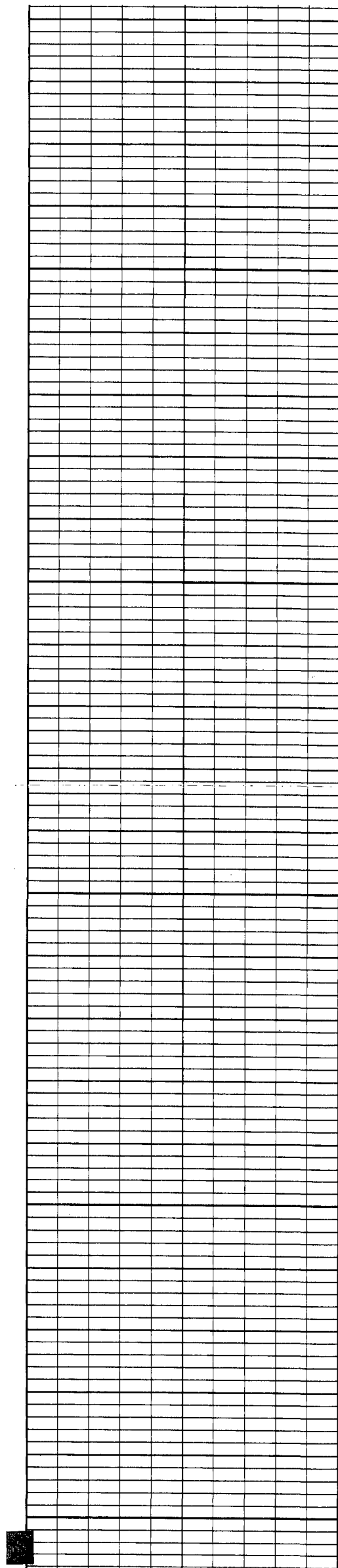
89.5

89.2

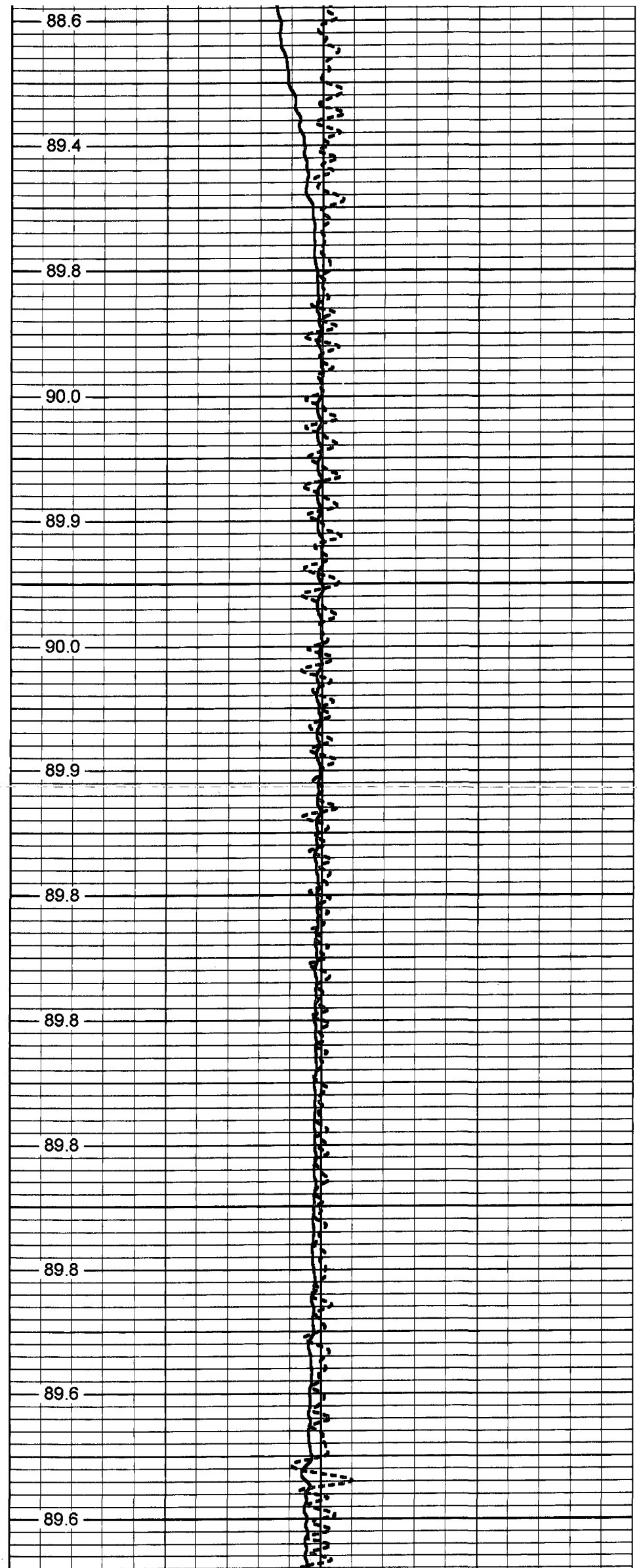
89.1

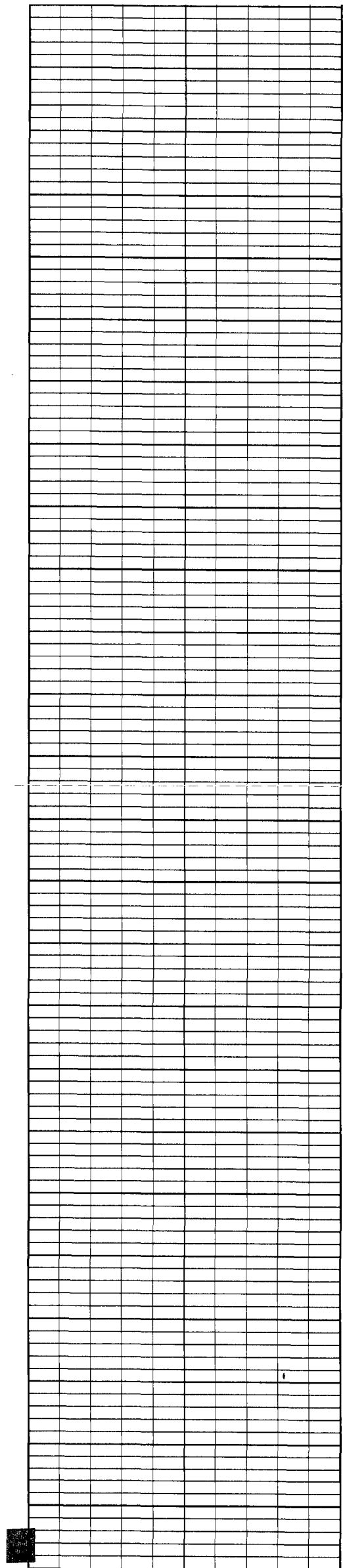
88.7





2800  
2850  
2900  
2950  
3000





3050

3100

3150

3200

3250

89.5

89.4

89.3

89.3

89.3

89.4

89.2

89.3

89.7

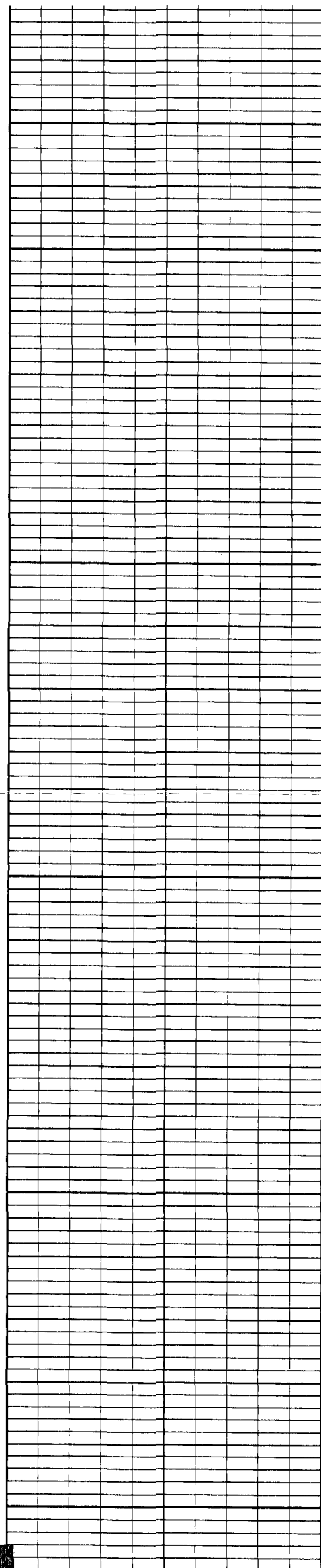
89.8

89.8

89.8

89.8





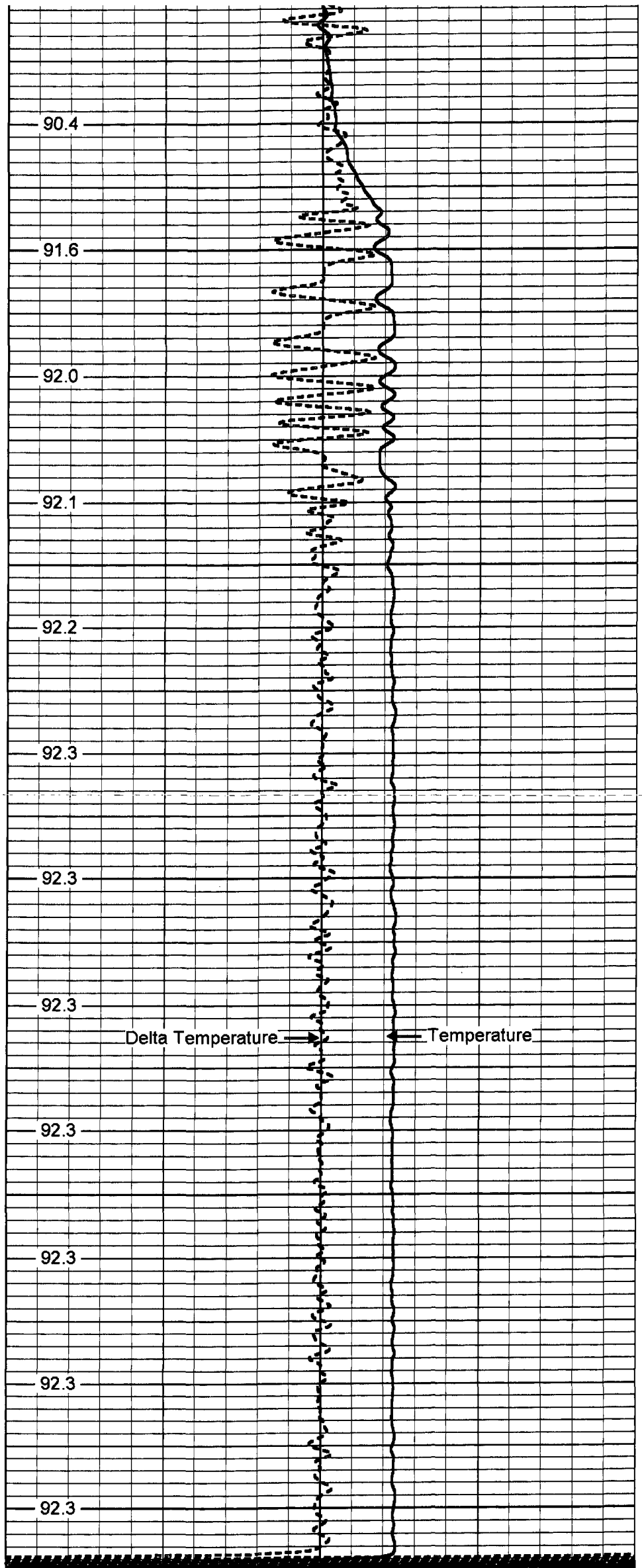
3300

3350

3400

3450

3500



90.4

91.6

92.0

92.1

92.2

92.3

92.3

92.3

92.3

92.3

92.3

92.3

Delta Temperature

Temperature

TEMPERATURE (°C)

100

Temperature Calibration Report

Serial Number: 951  
Tool Model: RTS  
Performed: Thu Nov 17 15:10:25 2005

Point #	Reading		Reference	
1	410	cps	41	degF
2	810.2	cps	81	degF
3	1570.6	cps	157	degF

TEMP-RTS (951)  
70.00 lb 1.69 in OD 25.50 ft



TEMP 0.10 ft

Dataset:	run1/TEMP1
Total Length:	25.50 ft
Total Weight:	70.00 lb
O.D.	1.69 in