

HIGH RESOLUTION TEMPERATURE LOG

Company **CAMP DRESSER & McKEE INC**
Well **CONCENTRATE IW-1**
Field **CITY OF CLEWISTON RO WTP**
County **HENDRY**
State **FLORIDA**

Company **CAMP DRESSER & McKEE INC.**
Well **CONCENTRATE IW-1**
Field **CITY OF CLEWISTON RO WTP**
County **HENDRY** State **FLORIDA**

Location			
Permanent Datum	PAD	Elevation	
Log Measured From	PAD	K.B.	
Drilling Measured From	PAD	D.F.	
		G.L.	

Date	03-OCT-2006	
Run Number	MIT '06	
Depth Driller	3505'	
Depth Logger	3505'	
Bottom Logged Interval	3505'	
Top Log Interval	SURFACE	
Open Hole Size	14.75"	
Type Fluid	WATER	
Density / Viscosity	NA	
Max. Recorded Temp.	93 DEGF	
Estimated Cement Top	NA	
Time Well Ready	ARRIVAL	
Time Logger on Bottom	0000	
Equipment Number	103	
Location	FT. MYERS	
Recorded By	LEE	
Witnessed By	A. MILLER	

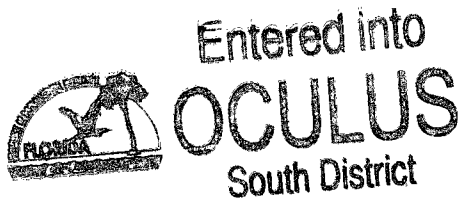
Run Number	Bit	Borehole Record		Run No.	Bit	Borehole Record	
		From	To			From	To
ONE	58"	SURFACE	253'	FIVE	34.5	CASING	2105'
TWO	12.25"	CASING	1000'	SIX	12.25"	CASING	2530'
THREE	46.5"	CASING	979'	SEVEN	12.25"	CASING	3500'
FOUR	12.25"	CASING	2100'	EIGHT	14.75"	CASING	3505'
Casing Record	Size	Wd/Ft		Top		Bottom	
Surface String	48"	375' W.T.		SURFACE		248'	
Prod. String	36"	375' W.T.		SURFACE		975'	
Production String	26"	375' W.T.		SURFACE		2105'	
Liner	16"	500' W.T.		SURFACE		2750'	

<<< Fold Here >>>

All interpretations are opinions based on inferences from electrical or other measurements and we cannot and do not guarantee the accuracy or correctness of any interpretation, and we shall not, except in the case of gross or willful negligence on our part, be liable or responsible for any loss, costs, damages, or expenses incurred or sustained by anyone resulting from any interpretation made by any of our officers, agents or employees. These interpretations are also subject to our general terms and conditions set out in our current Price Schedule.

Comments

RTS



TEMPERATURE

80

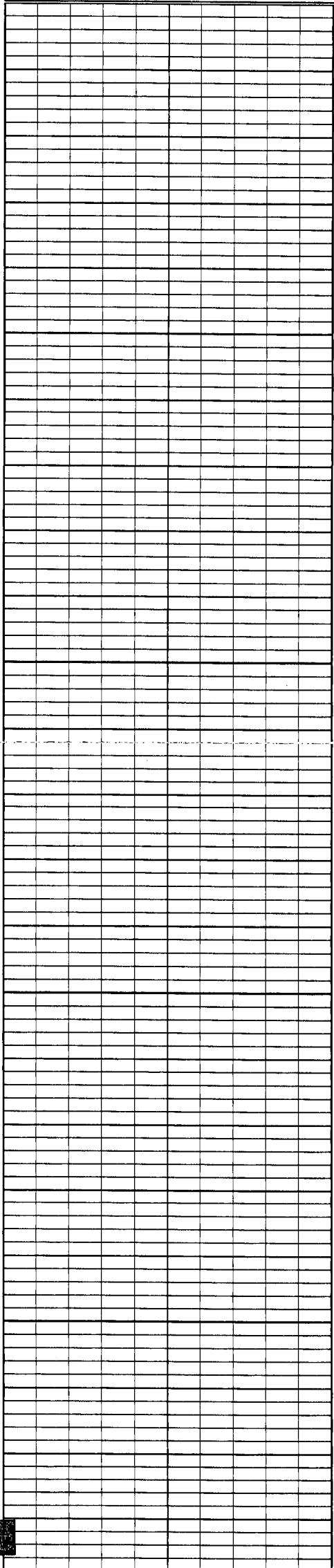
TEMPERATURE (degF)

100

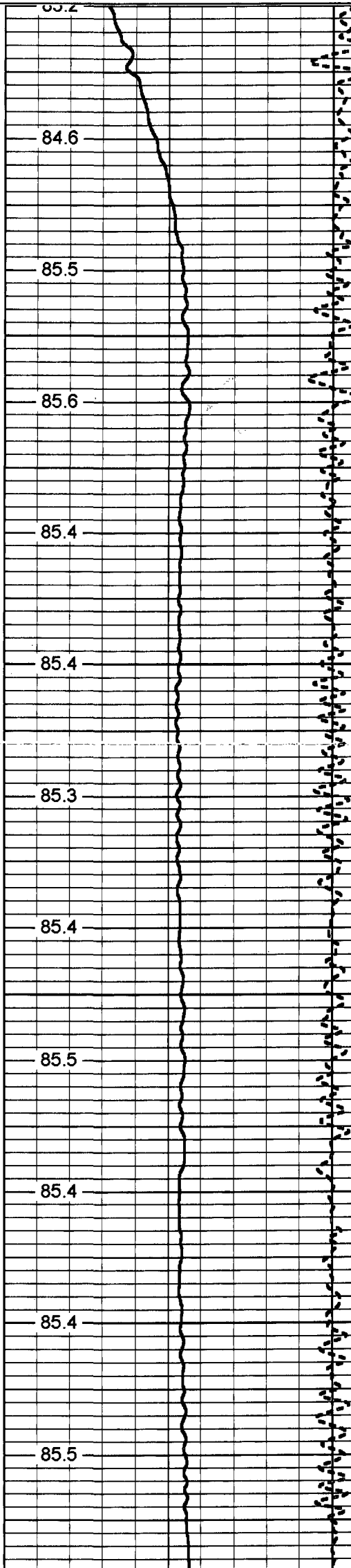
-2

DELTA TEMPERATURE (degF)

2



0
50
100
150
200



84.6

85.5

85.6

85.4

85.4

85.3

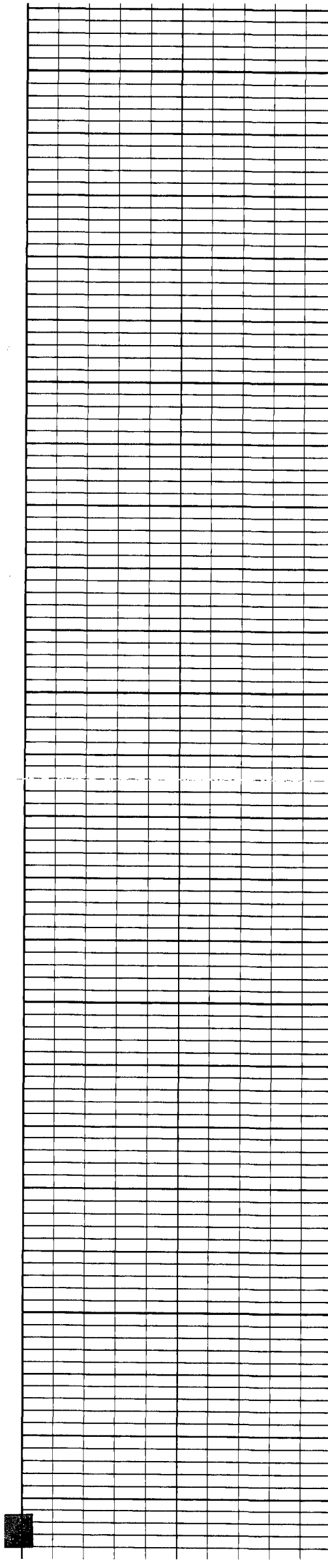
85.4

85.5

85.4

85.4

85.5



250

300

350

400

450

85.6

85.9

86.2

86.2

85.9

85.7

85.6

85.6

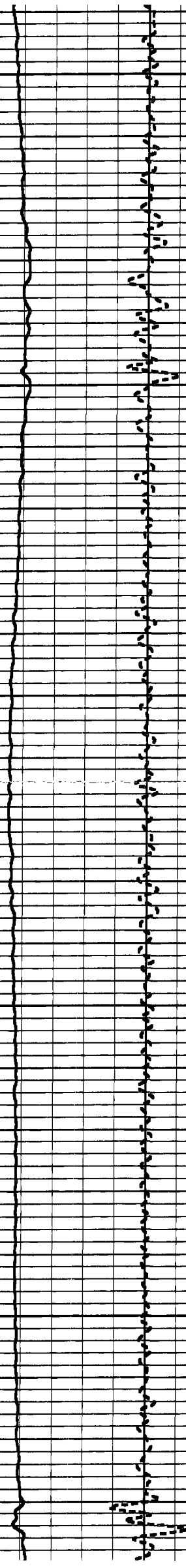
85.7

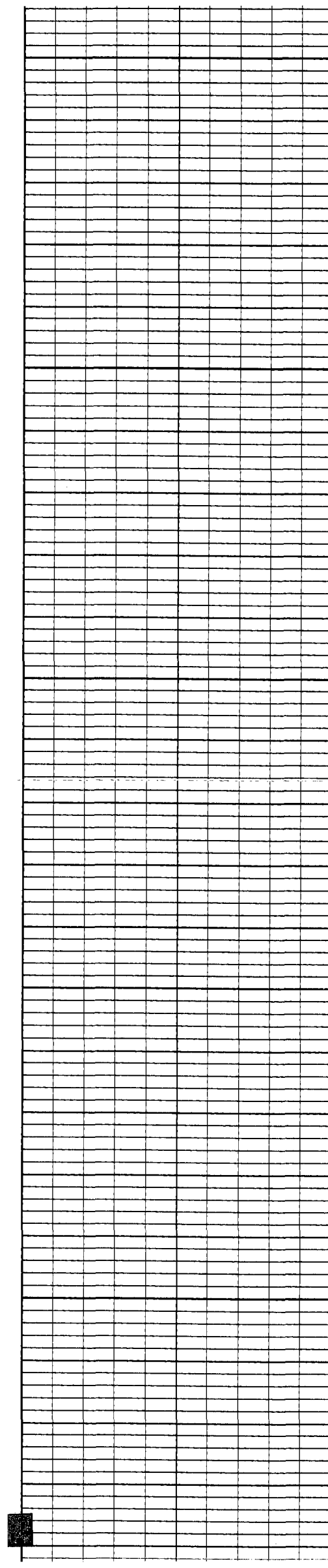
85.8

85.8

85.9

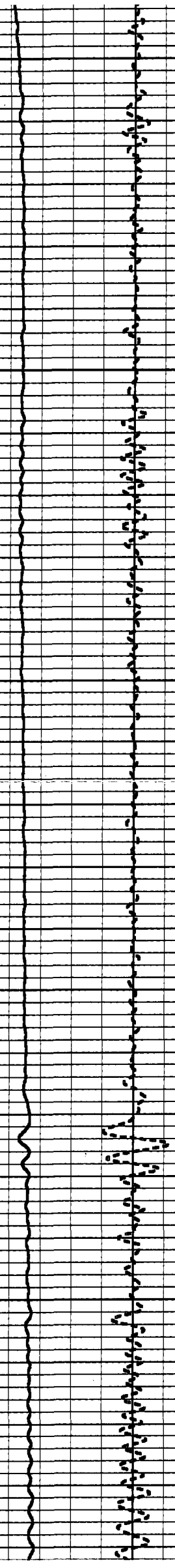
86.1

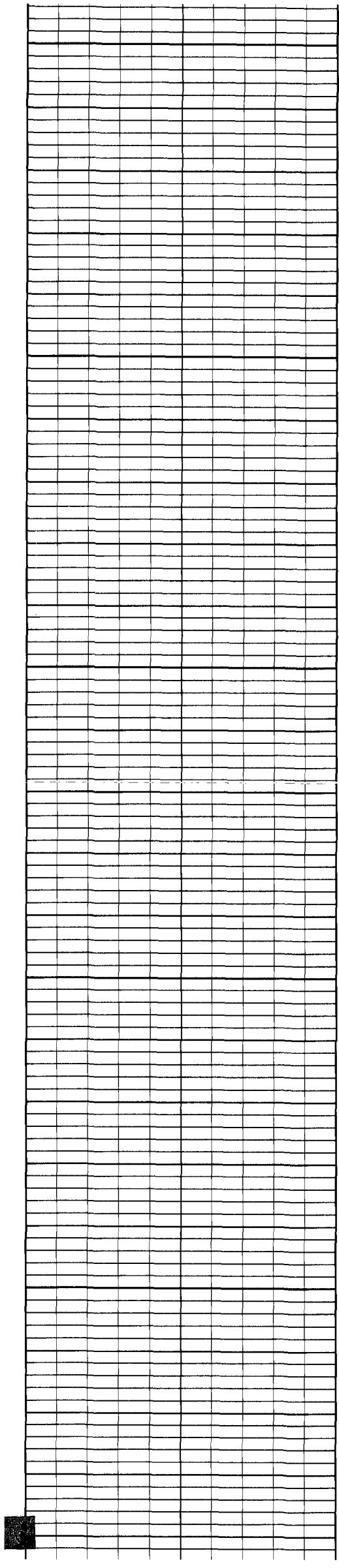




500
550
600
650
700

86.3
86.4
86.4
86.4
86.3
86.4
86.5
86.5
86.5
86.7
86.6
86.7
86.8





750

86.8

86.9

800

86.7

86.9

86.7

850

86.7

86.7

900

86.8

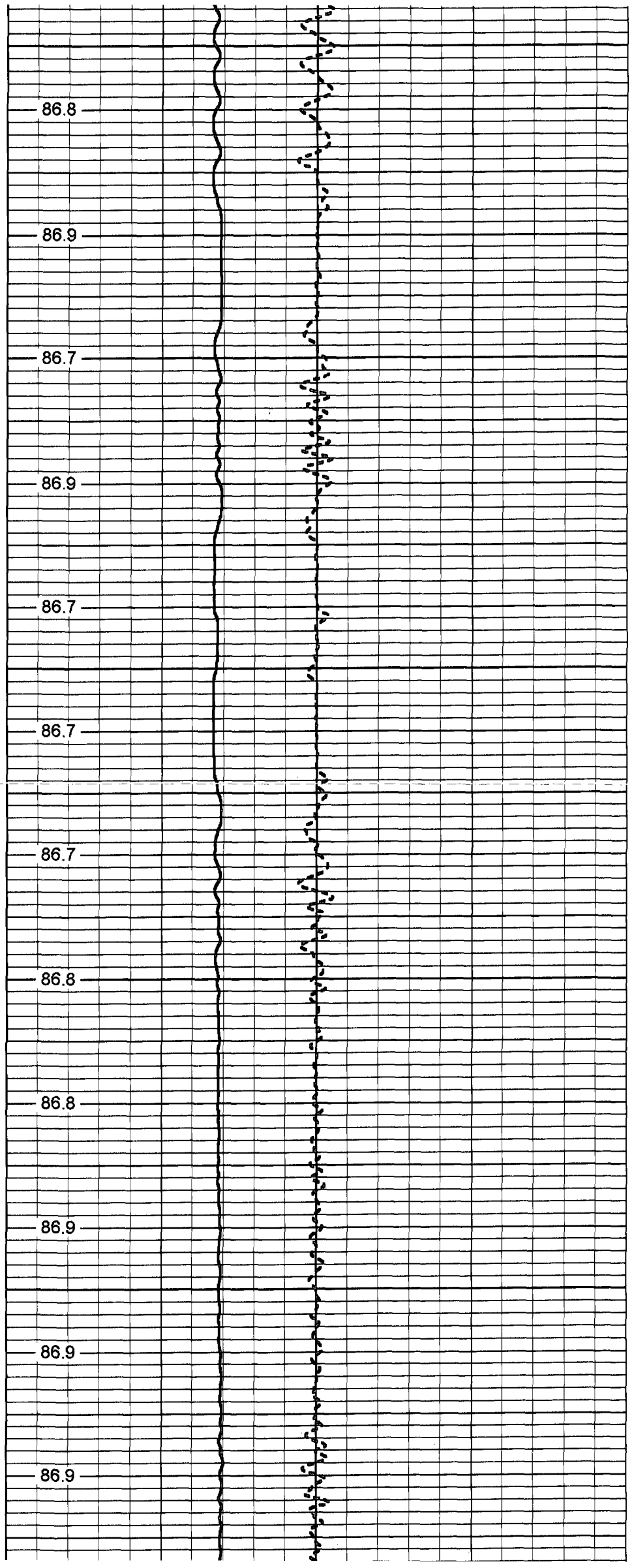
86.8

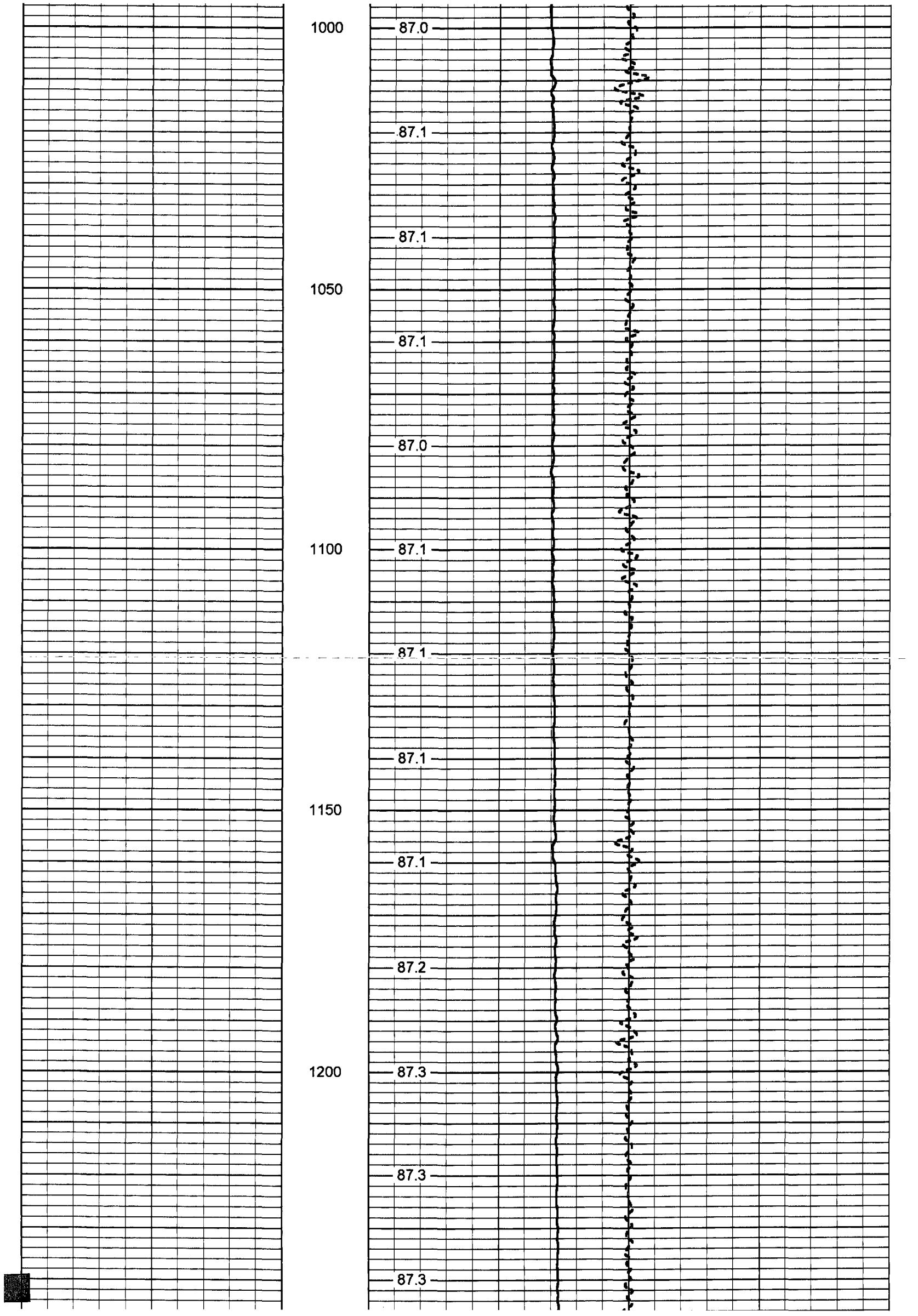
86.9

950

86.9

86.9





1000

87.0

87.1

87.1

1050

87.1

87.0

1100

87.1

87.1

87.1

1150

87.1

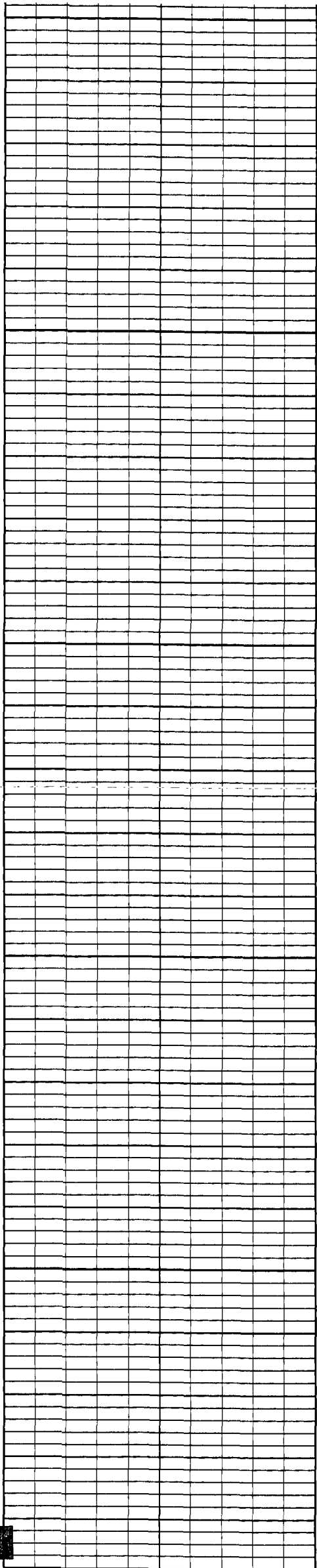
87.2

1200

87.3

87.3

87.3



1250

87.3

87.3

1300

87.3

87.4

87.3

1350

87.4

87.5

1400

87.5

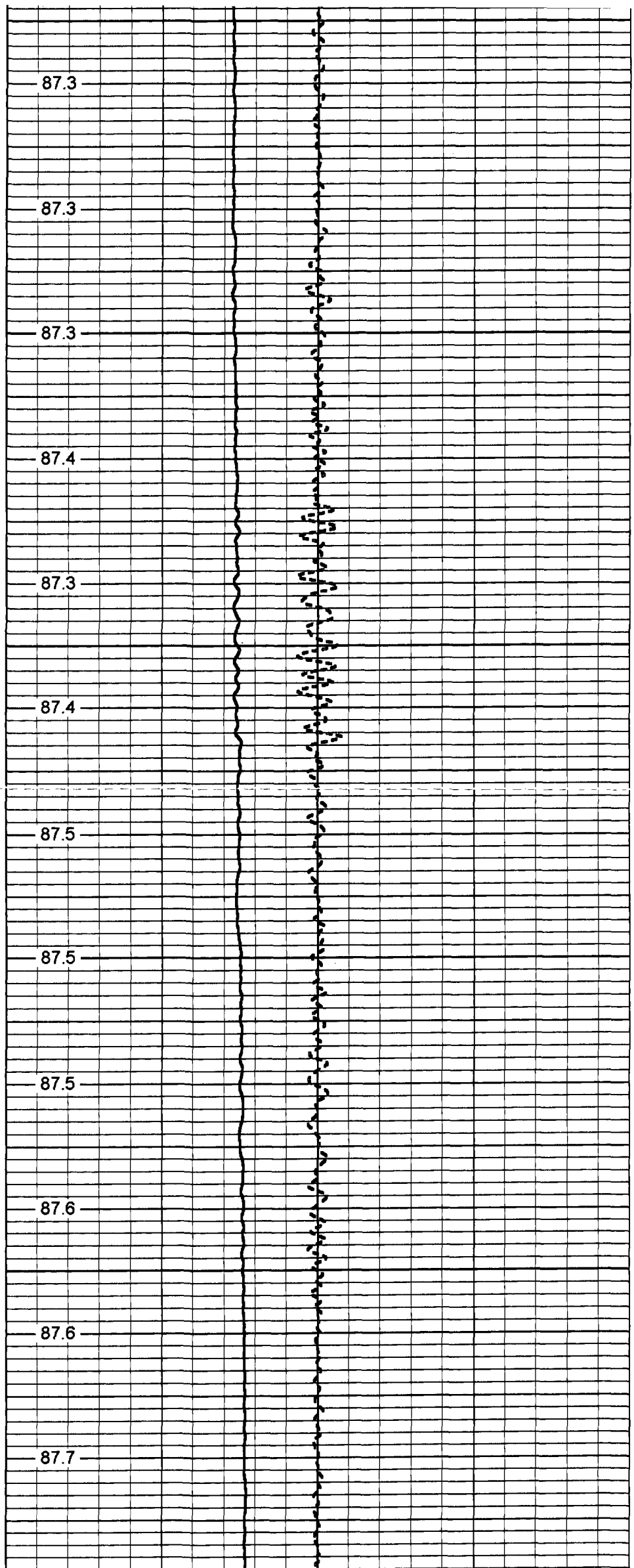
87.5

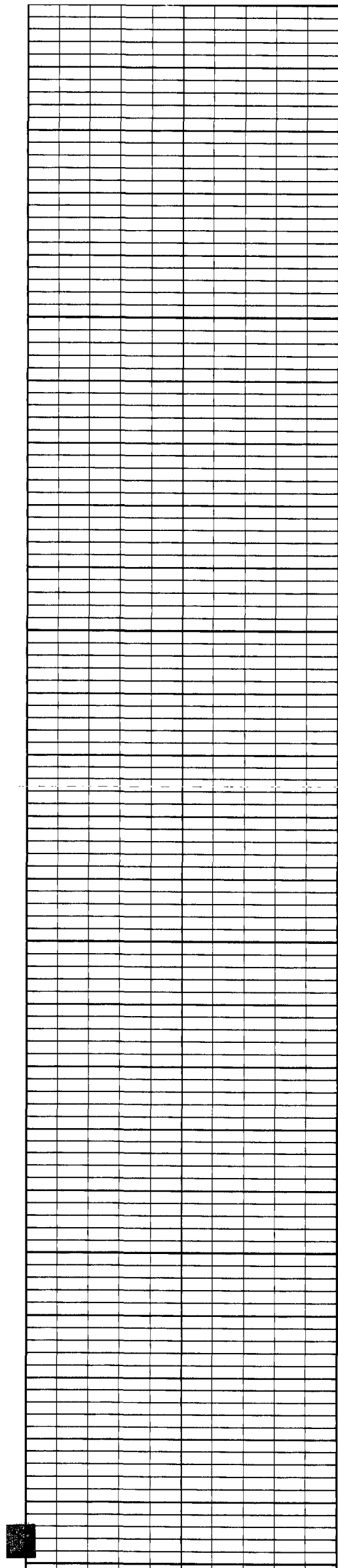
87.6

1450

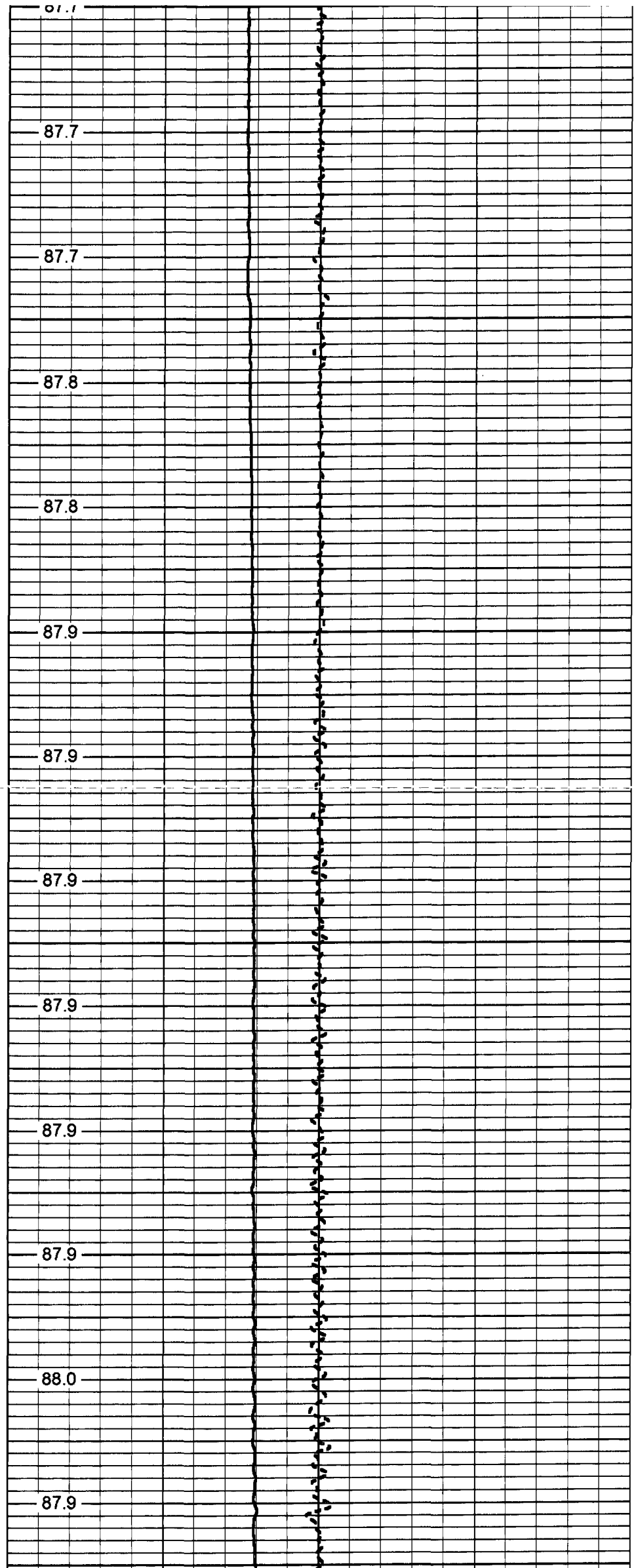
87.6

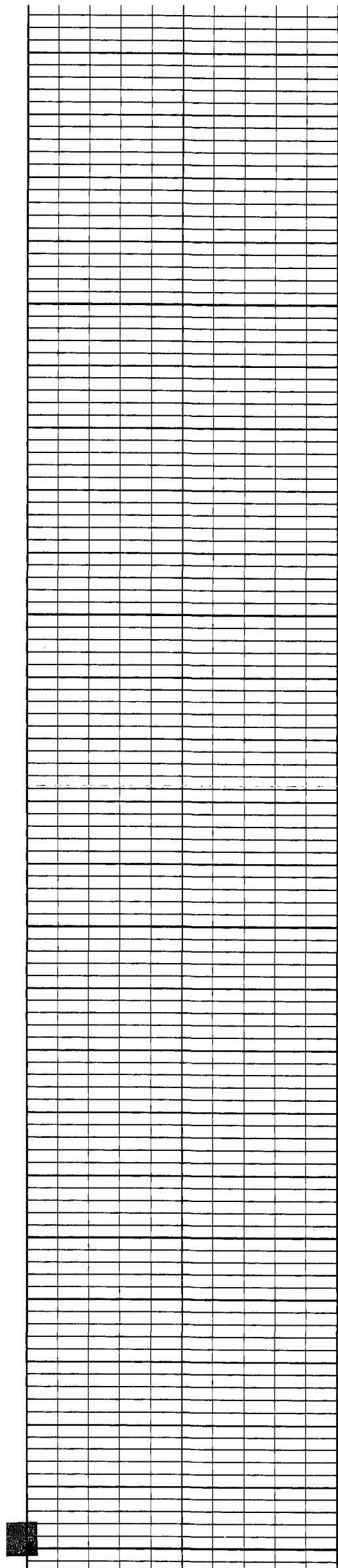
87.7





1500
1550
1600
1650
1700
1750





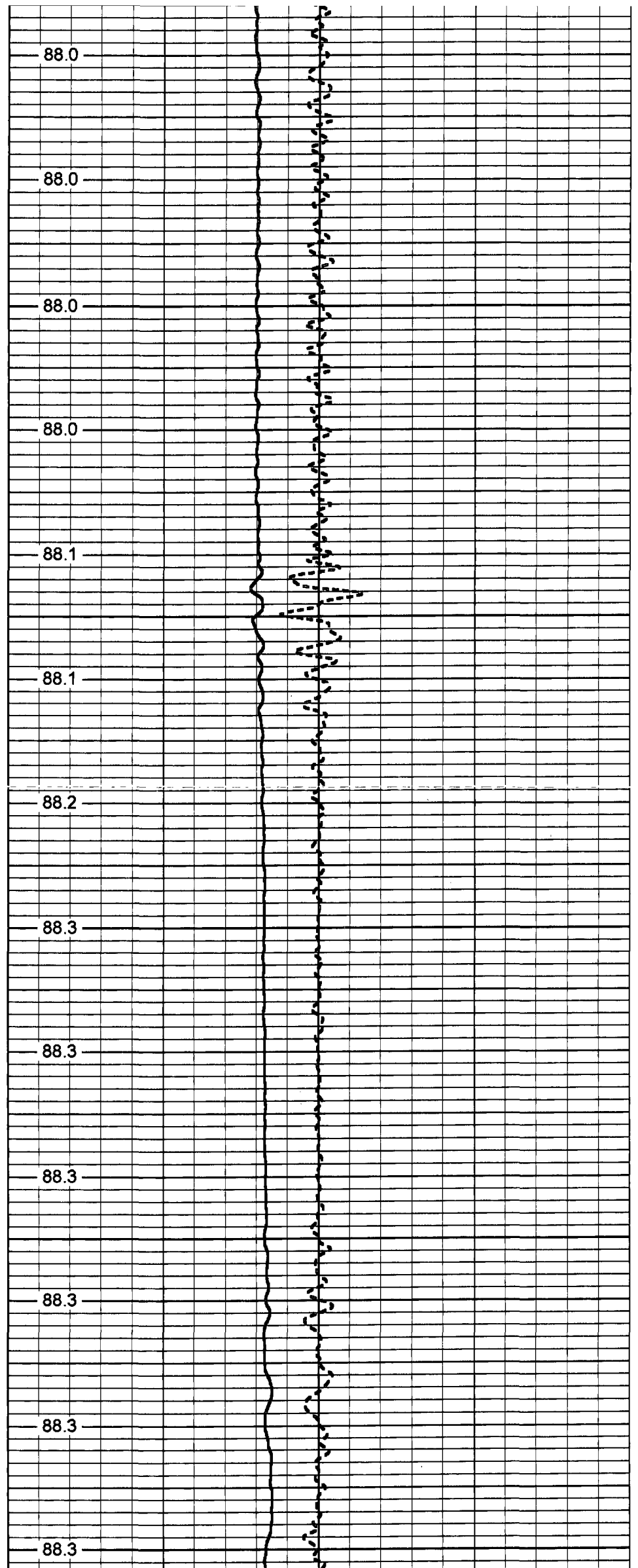
1800

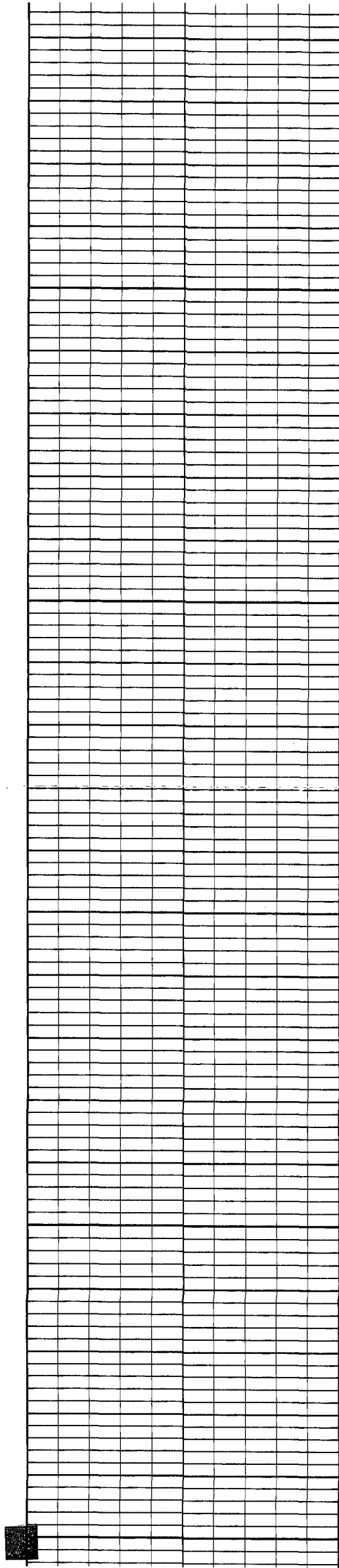
1850

1900

1950

2000





2050

2100

2150

2200

2250

88.4

88.4

88.4

88.4

88.4

88.5

88.4

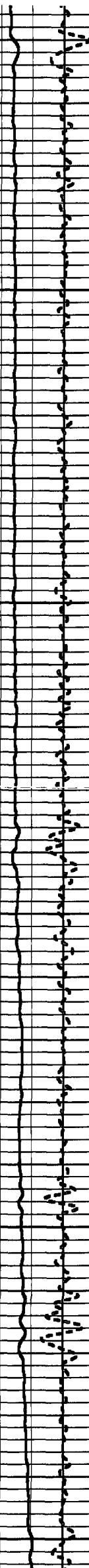
88.6

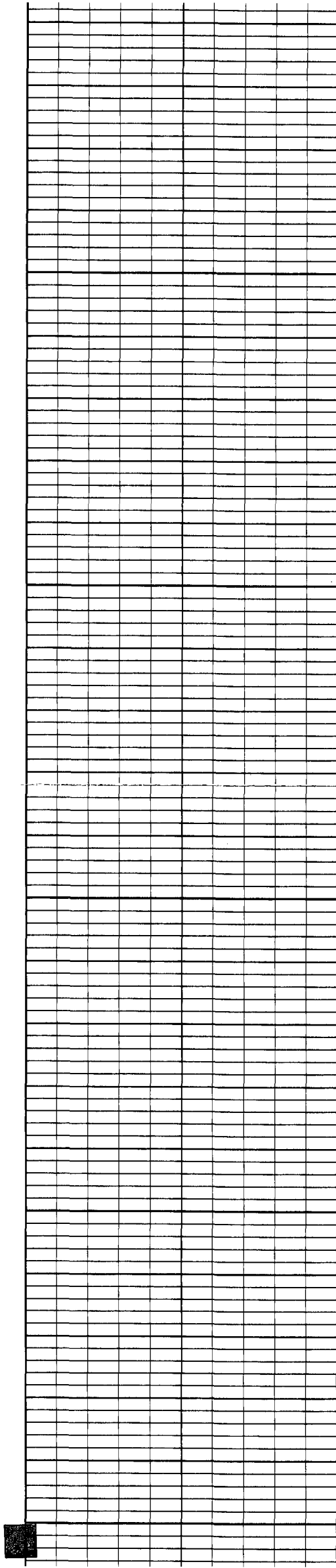
88.7

88.7

88.6

88.9





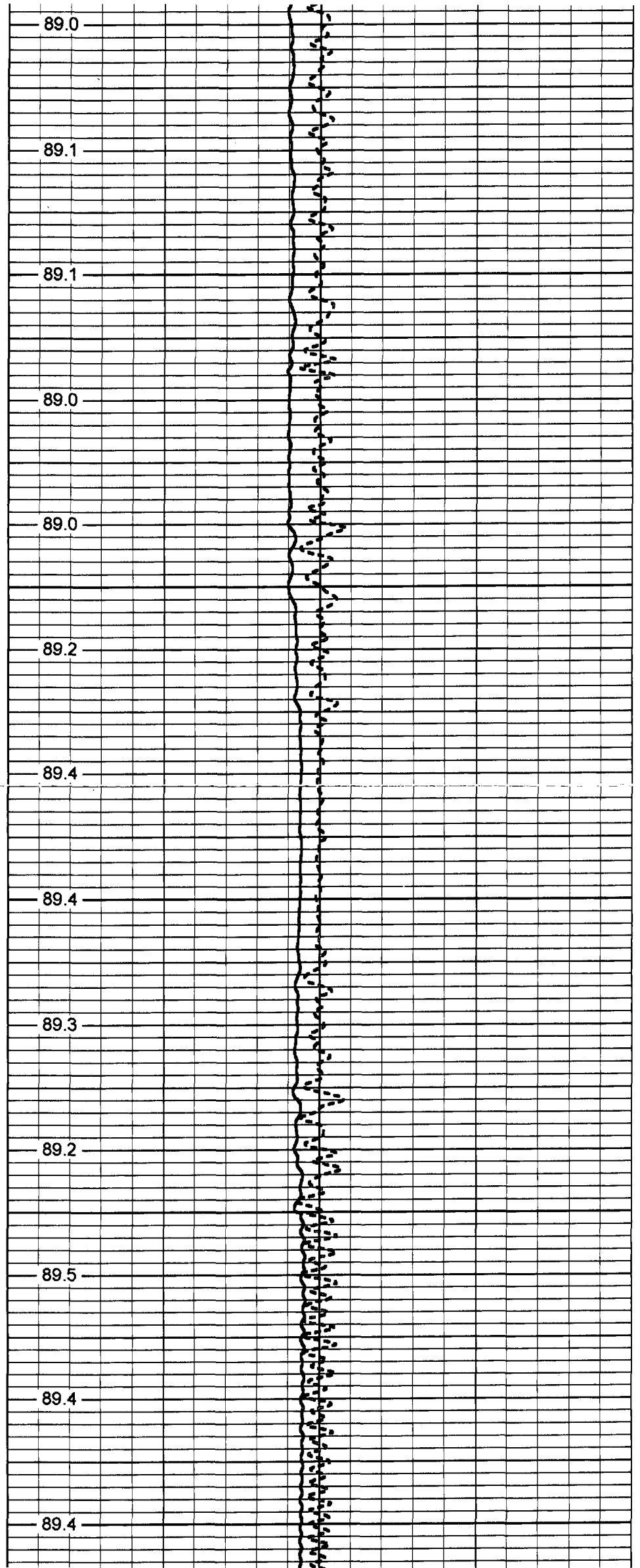
2300

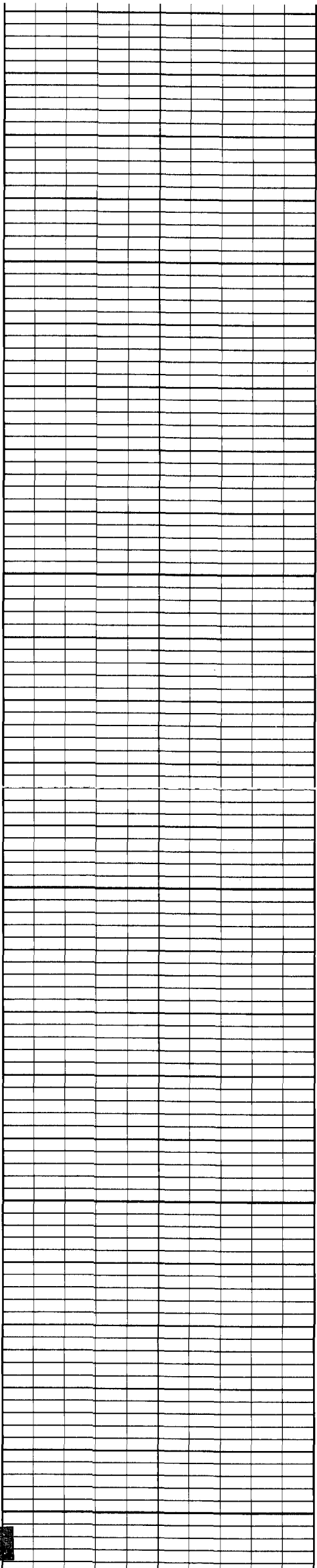
2350

2400

2450

2500





2550

2600

2650

2700

2750

89.4

89.5

89.6

89.6

89.5

89.5

89.5

89.6

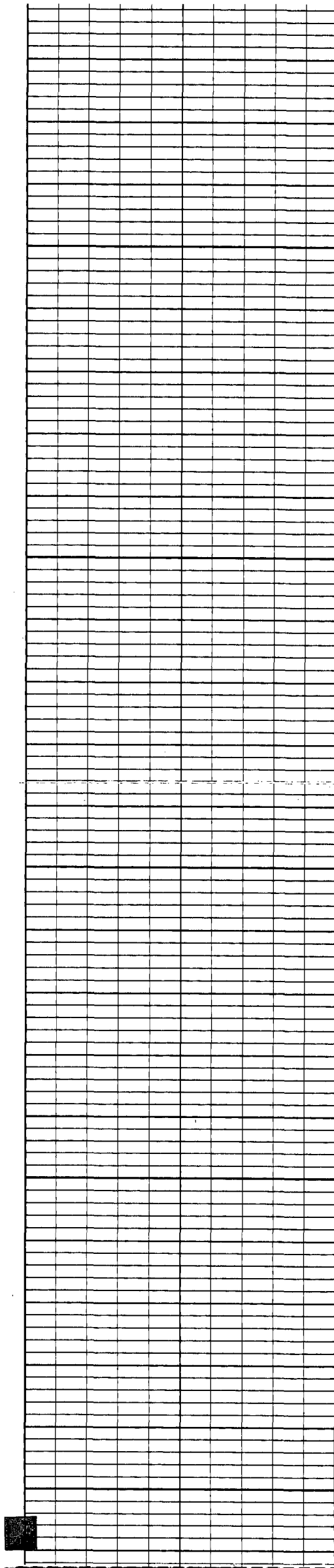
89.5

89.2

89.1

88.7





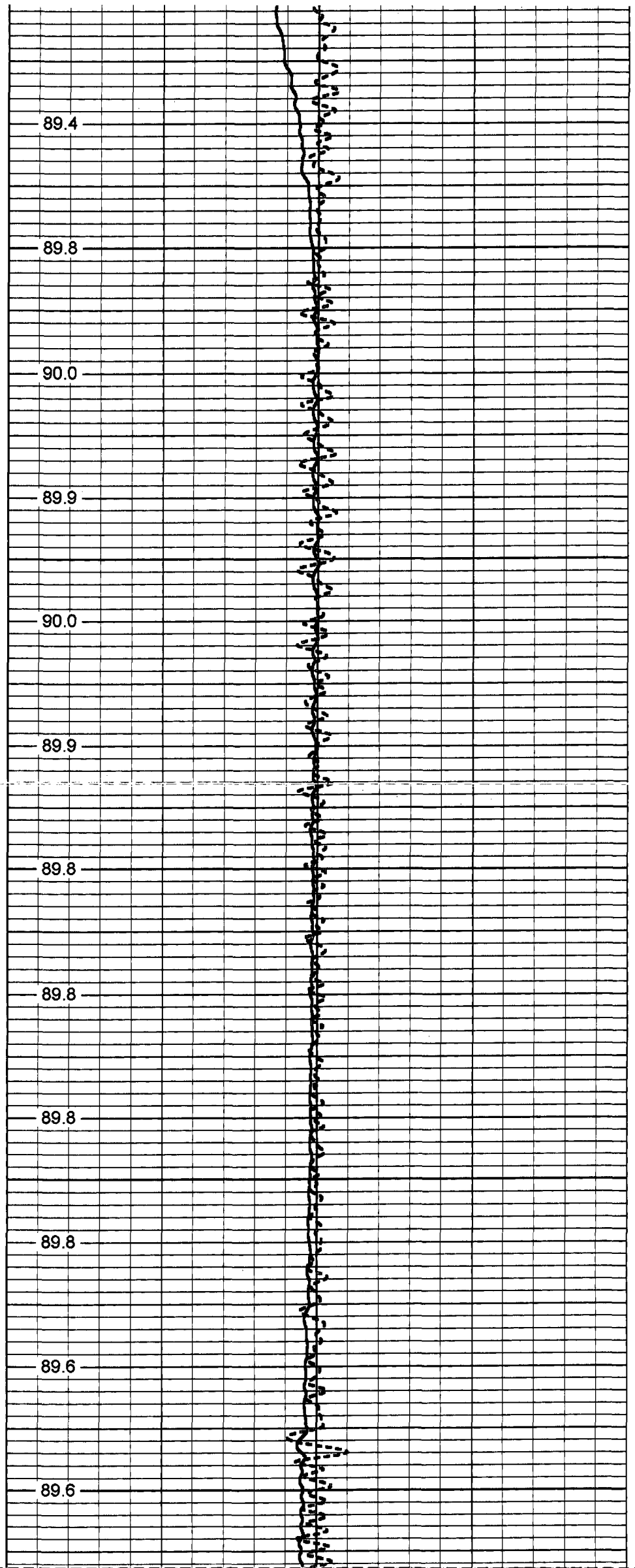
2800

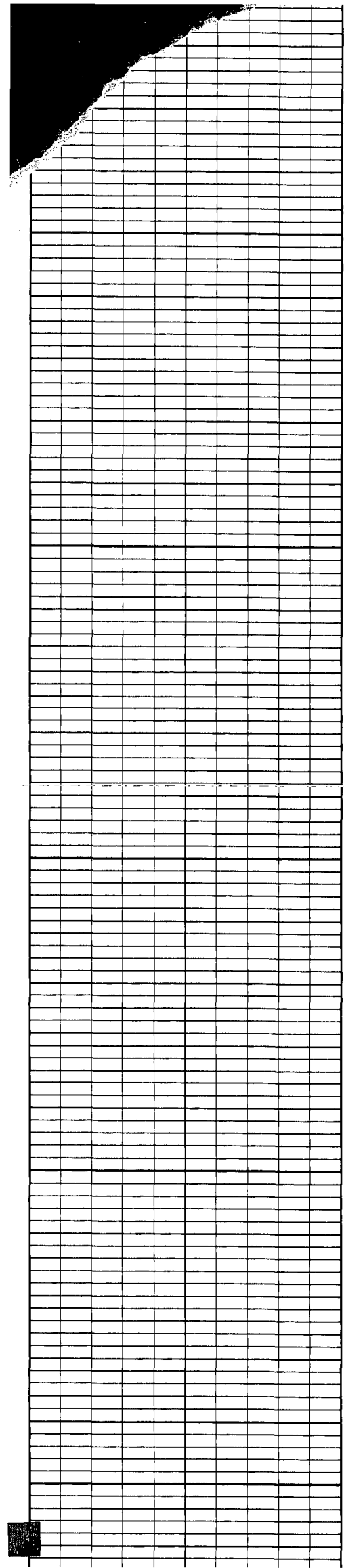
2850

2900

2950

3000





3050

3100

3150

3200

3250

89.5

89.4

89.3

89.3

89.3

89.4

89.2

89.3

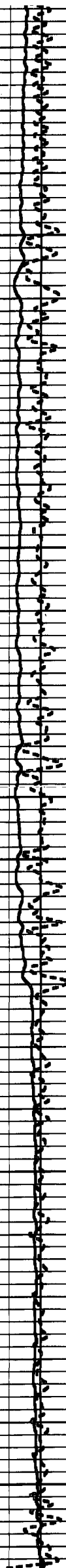
89.7

89.8

89.8

89.8

89.9



3300

3350

3400

3450

3500

90.4

91.6

92.0

92.1

92.2

92.3

92.3

92.3

92.3

92.3

92.3

92.3

Delta Temperature

Temperature

80

TEMPERATURE (degF)

100

DELTA TEMPERATURE (degF)

2



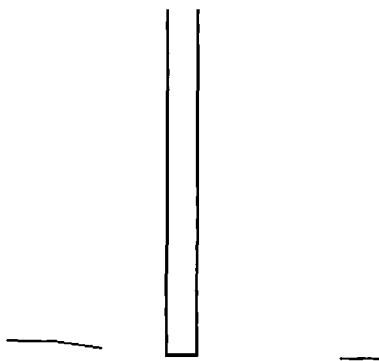
Temperature Calibration Report

Serial Number: 951
Tool Model: RTS
Performed: Thu Nov 17 15:10:25 2005

Point #	Reading		Reference	
1	410	cps	41	degF
2	810.2	cps	81	degF
3	1570.6	cps	157	degF

TEMP-RTS (951)
70.00 lb 1.69 in OD 25.50 ft

TEMP 0.10 ft



Dataset:	run1/TEMP1
Total Length:	25.50 ft
Total Weight:	70.00 lb
O.D.	1.69 in