



**YOUNGQUIST
BROTHERS, Inc**

GEOPHYSICAL LOGGING DIVISION

**FLUID CONDUCTIVITY
TEMPERATURE
LOG**

Company **CAMP DRESSER & MCKEE INC**
Well **CONCENTRATE IW-1**
Field **CITY OF CLEWISTON RO WTP**
County **HENDRY**
State **FLORIDA**

Company **CAMP DRESSER & MCKEE INC.**
Well **CONCENTRATE IW-1**
Field **CITY OF CLEWISTON RO WTP**
County **HENDRY** State **FLORIDA**

| | | | | |
|----------|------------------------|-----|-----------|-----------------------------------|
| Location | Permanent Datum | PAD | Elevation | Other Services SEE COMMENTS |
| | Log Measured From | PAD | | |
| | Drilling Measured From | PAD | Elevation | K.B. D.F. G.L. |

| | | | | |
|------------------------|-------------|---------|-------|------|
| Date | 11-MAY-2006 | | | |
| Run Number | BIT | From | To | Size |
| Depth Driller | 58" | SURFACE | 253' | |
| Depth Logger | 12.25" | CASING | 1000' | |
| Bottom Logged Interval | 46.5" | CASING | 979' | |
| Top Log Interval | 12.25" | CASING | 2100' | |
| Open Hole Size | WATER | | | |
| Type Fluid | NA | | | |
| Density / Viscosity | NA | | | |
| Max. Recorded Temp. | NA | | | |
| Estimated Cement Top | NA | | | |
| Time Well Ready | 0000 | | | |
| Time Logger on Bottom | 0000 | | | |
| Equipment Number | 103 | | | |
| Location | FT. MYERS | | | |
| Recorded By | CATHEY | | | |
| Witnessed By | A. MILLER | | | |

| | | | | | | | |
|-----------------|-------|---------|-------|------|--------|------|----|
| Borehole Record | Bit | From | To | Size | Weight | From | To |
| | ONE | SURFACE | 253' | | | | |
| | TWO | 12.25" | 1000' | | | | |
| | THREE | 46.5" | 979' | | | | |
| | FOUR | 12.25" | 2100' | | | | |

| | | | | |
|---------------|------|------------|---------|--------|
| Tubing Record | Size | Wgt/Ft | Top | Bottom |
| | 48" | 3.75 W.T. | SURFACE | 248' |
| | 36" | 3.75" W.T. | SURFACE | 975' |

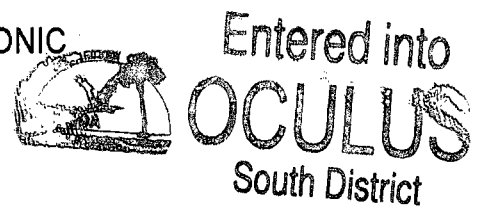
<<< Fold Here >>>

All interpretations are opinions based on inferences from electrical or other measurements and we cannot and do not guarantee the accuracy or correctness of any interpretation, and we shall not, except in the case of gross or willful negligence on our part, be liable or responsible for any loss, costs, damages, or expenses incurred or sustained by anyone resulting from any interpretation made by any of our officers, agents or employees. These interpretations are also subject to our general terms and conditions set out in our current Price Schedule.

Comments

OTHER SERVICES:

**DUAL INDUCTION
 X-Y CALIPER / GAMMA RAY
 BOREHOLE COMPENSATED SONIC
 FLOWMETER
 VIDEO**



DYNAMIC FLOWRATE = 350 GPM

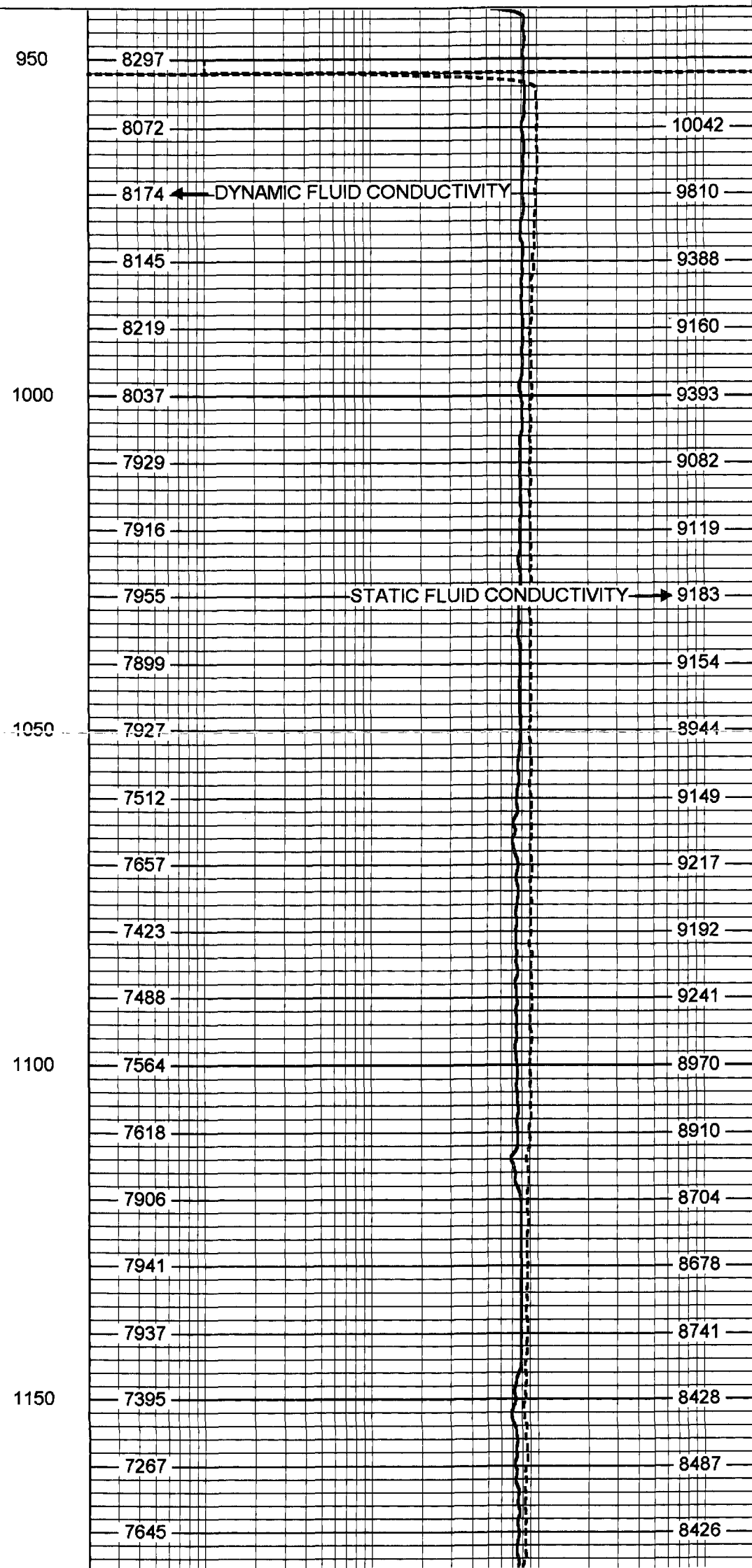
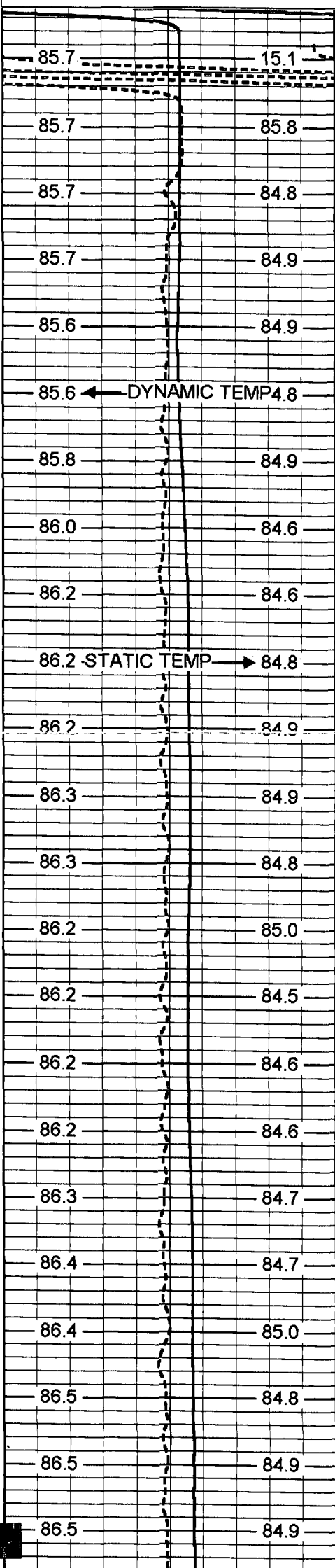
**YOUNGQUIST
BROTHERS, Inc**
GEOPHYSICAL LOGGING DIVISION

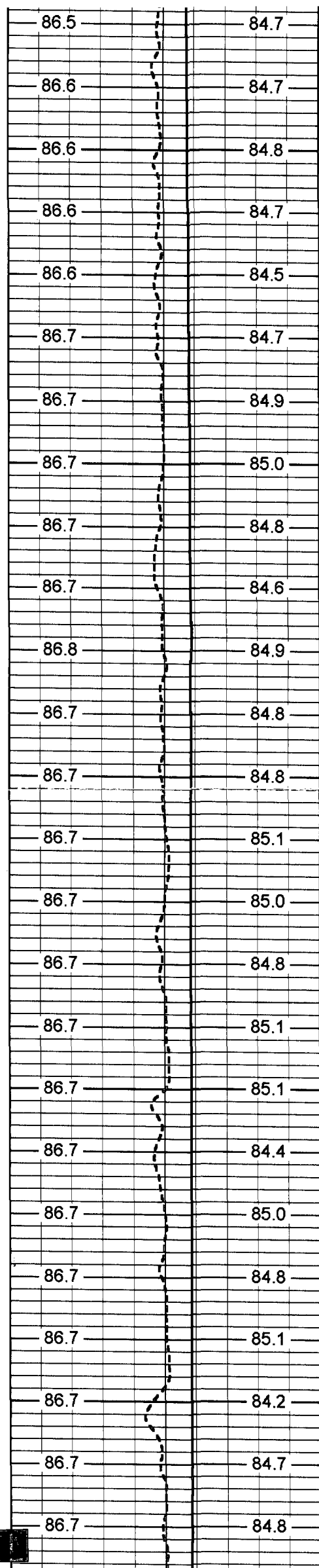
MERGED FCT

Database File: clewiw1.db
 Dataset Pathname: run8/pass13
 Presentation Format: frt_mg
 Dataset Creation: Fri May 12 00:48:18 2006 by Log 6.2_B4
 Charted by: Depth in Feet scaled 1:240

75 DYNAMIC TEMP (degF) 95
 75 STATIC TEMP (degF) 95

20 DYNAMIC FLUID CONDUCTIVITY (uS) 200000
 20 STATIC FLUID CONDUCTIVITY (uS) 200000





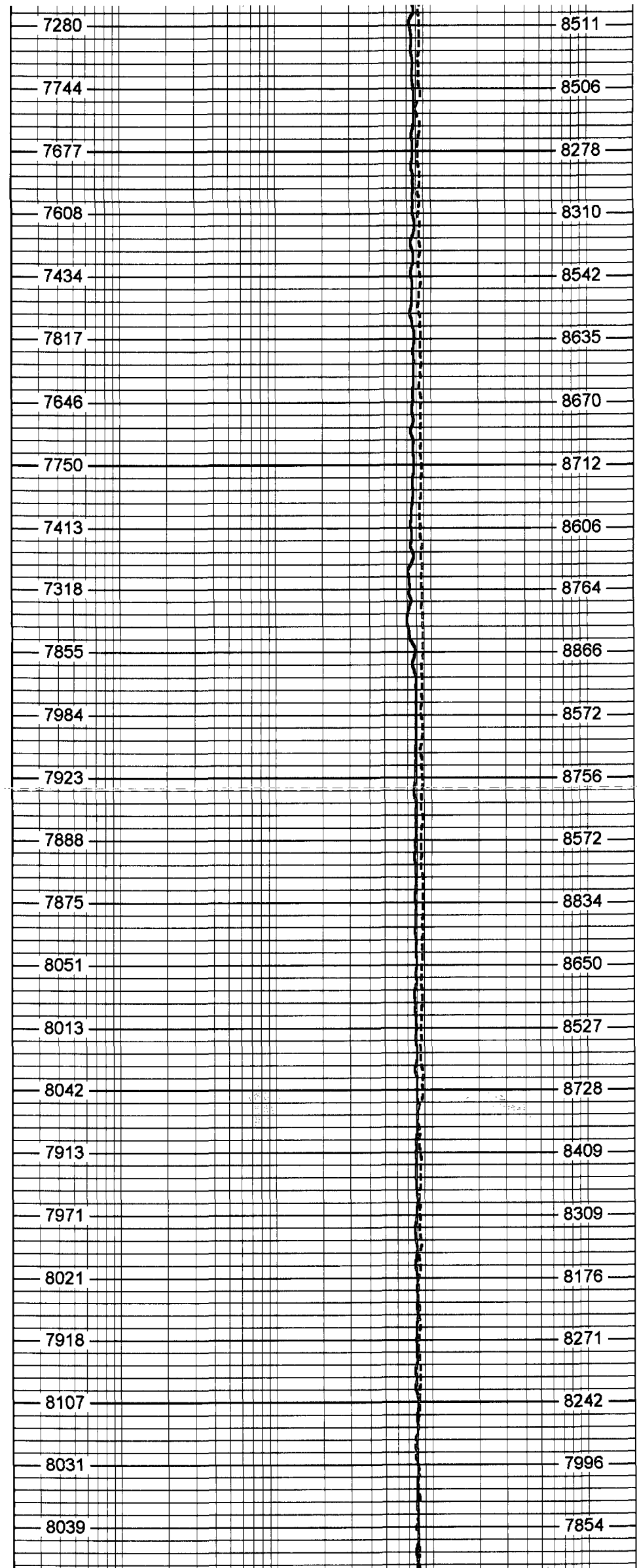
1200

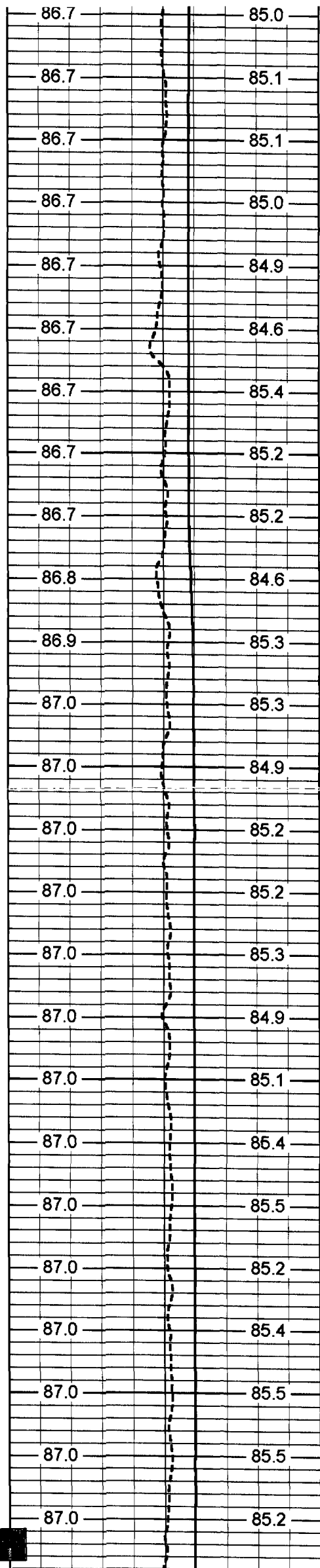
1250

1300

1350

1400





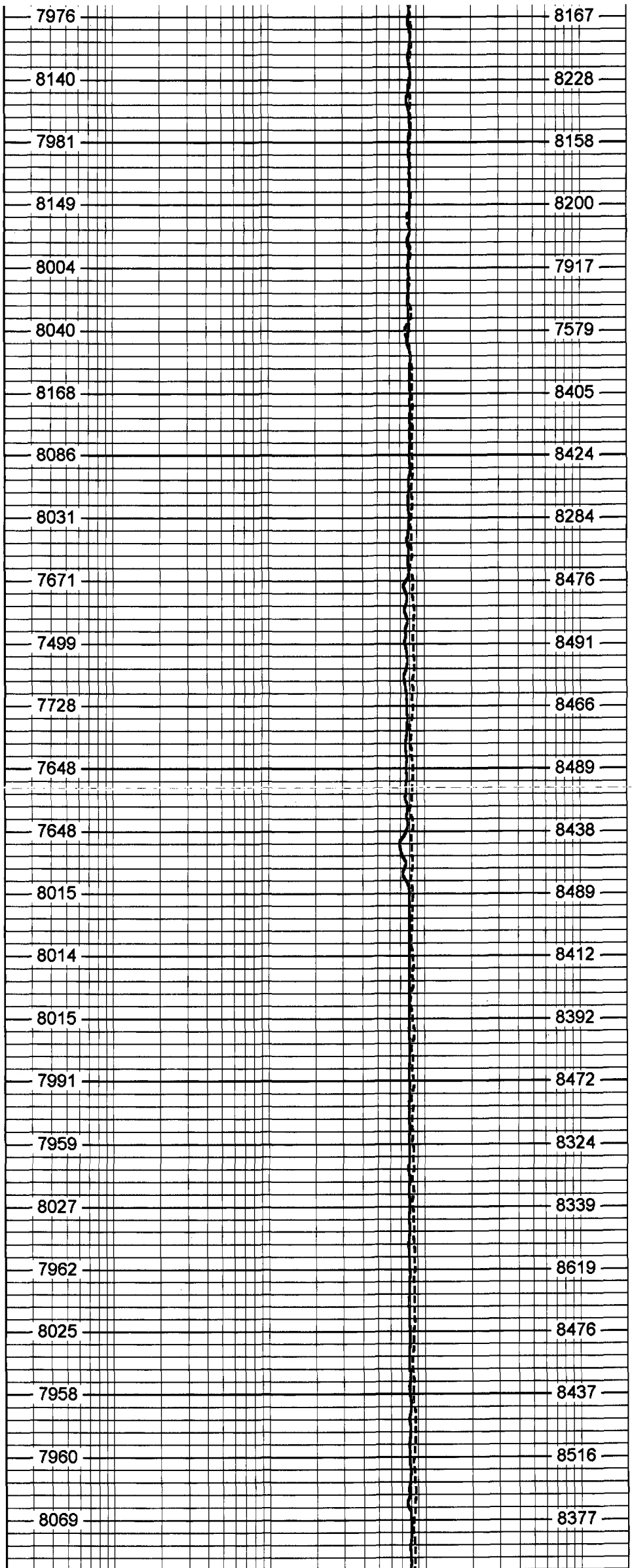
1450

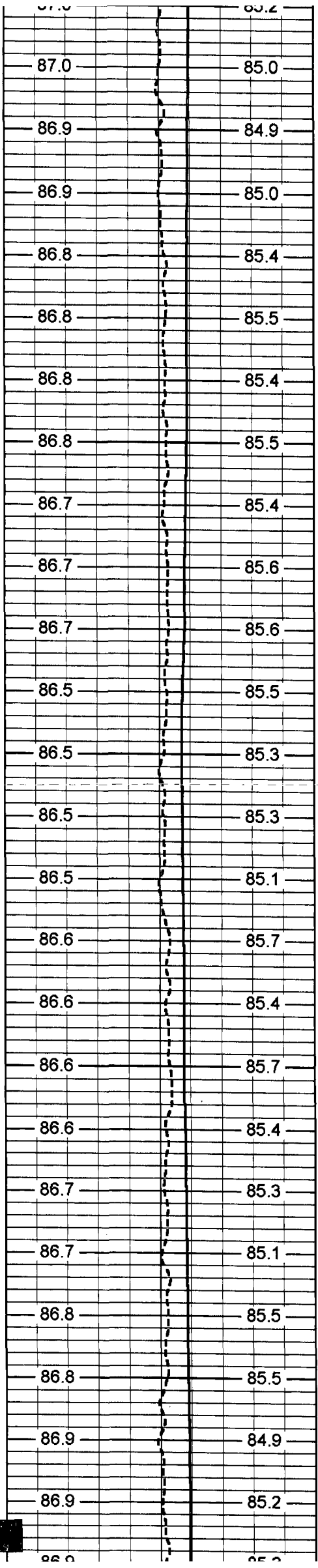
1500

1550

1600

1650





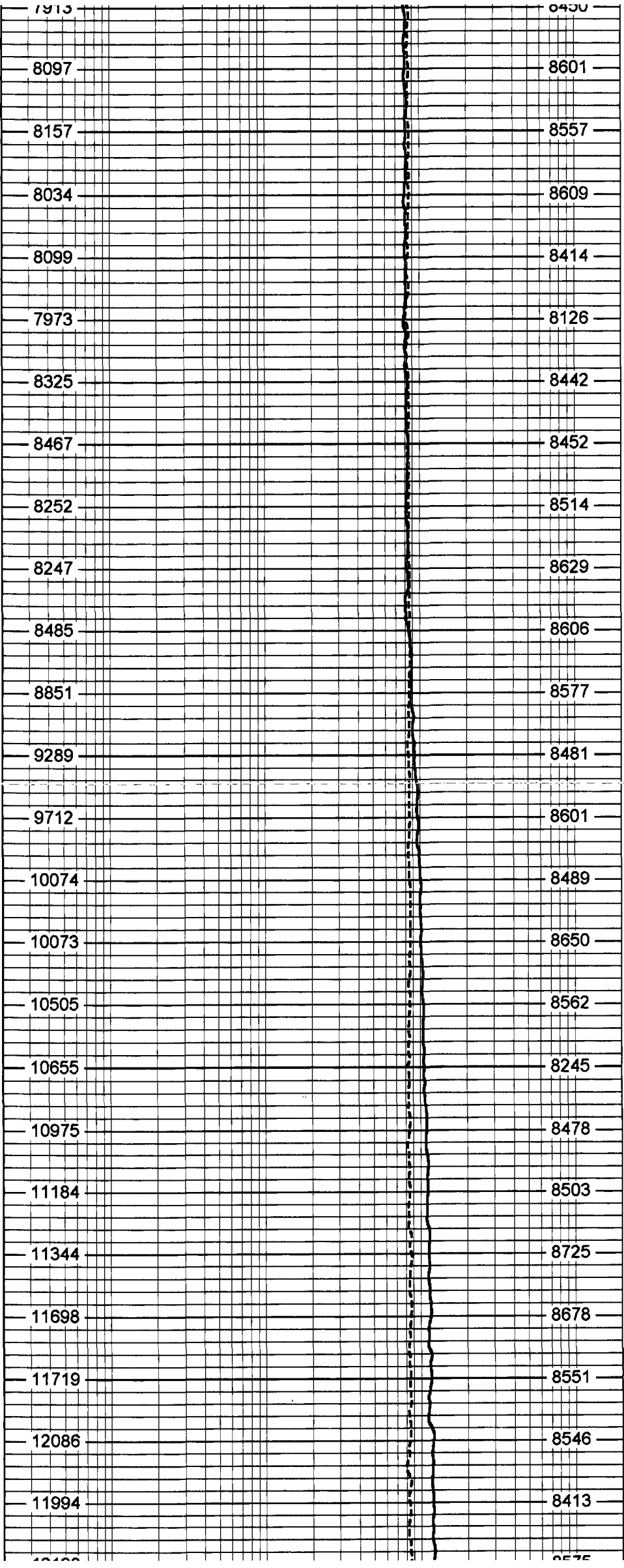
1700

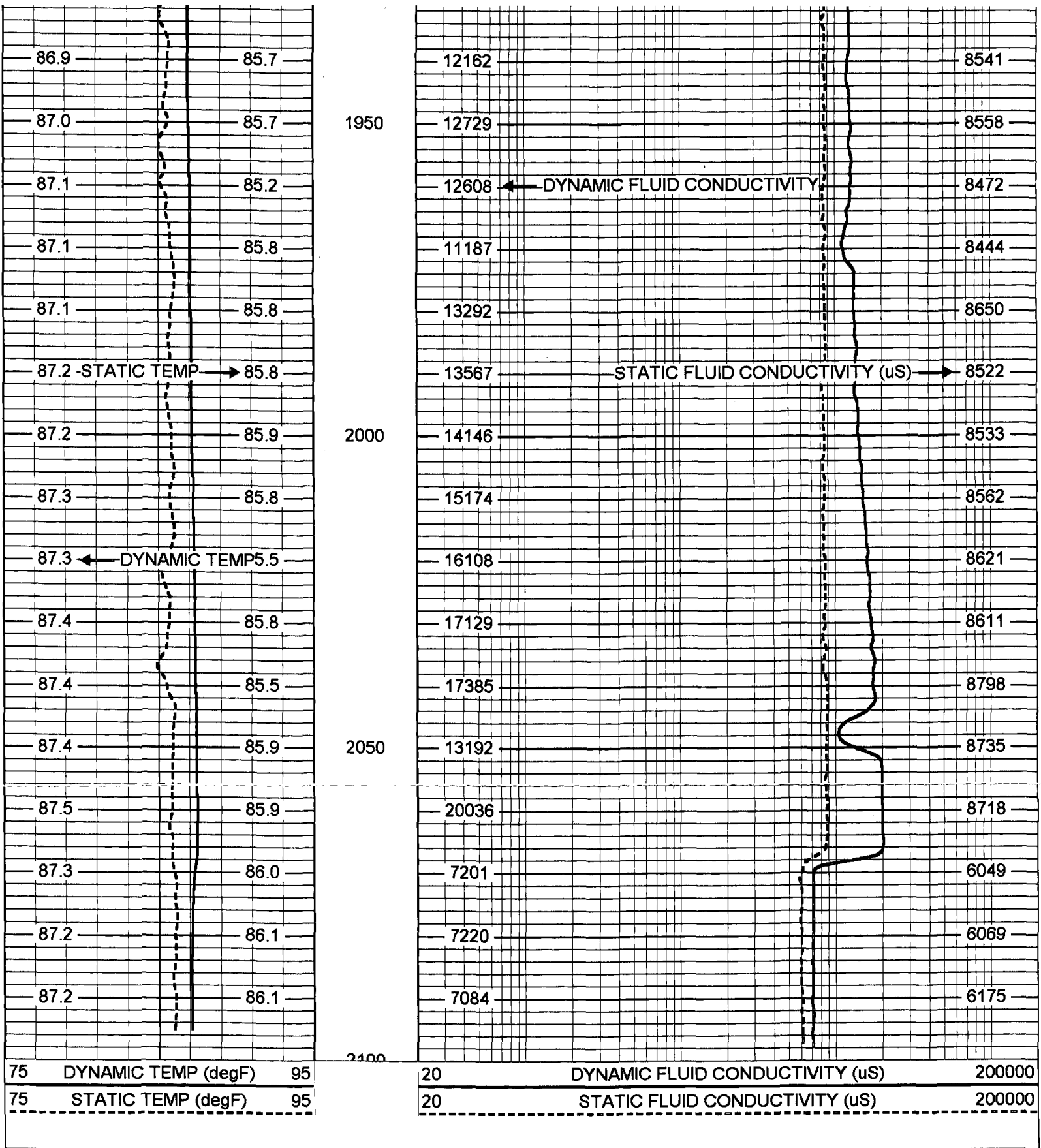
1750

1800

1850

1900





75 DYNAMIC TEMP (degF) 95
 75 STATIC TEMP (degF) 95

20 DYNAMIC FLUID CONDUCTIVITY (uS) 200000
 20 STATIC FLUID CONDUCTIVITY (uS) 200000

| FRT Calibration Report | | | |
|------------------------|---------|--------------------------|-----------|
| Serial Number: | | 31 | |
| Tool Model: | | SONDEX | |
| Performed: | | Thu Nov 17 15:03:36 2005 | |
| Point # | Reading | | Reference |
| 1 | 30.817 | cps | 1000.000 |
| 2 | 171.328 | cps | 10000.000 |
| 3 | 445.517 | cps | 25000.000 |
| 4 | 965.867 | cps | 50000.000 |
| 5 | | cps | |
| 6 | | cps | |

Tool Model:
Performed:

SONDEX
Thu Nov 17 15:03:50 2005

| Point # | Reading | | Reference | |
|---------|---------|-----|-----------|------|
| 1 | 128.595 | cps | 41 | degF |
| 2 | 265.556 | cps | 70 | degF |
| 3 | 697.393 | cps | 156 | degF |

TEMP 0.70 ft
FRES 0.50 ft



TEMP-SONDEX (31)
10.00 lb 1.62 in OD 1.20 ft

FRT-SONDEX (31)
10.00 lb 1.69 in OD 0.60 ft

Dataset: run8/pass13
Total Length: 1.80 ft
Total Weight: 20.00 lb
O.D. 1.69 in