

Company **FLORIDA POWER & LIGHT**  
 Well **IW #1**  
 Field **WEST COUNTY ENERGY CENTER**  
 County **PALM BEACH** State **FL**  
 Location

Company **FLORIDA POWER & LIGHT**  
 Well **IW #1**  
 Field **WEST COUNTY ENERGY CENTER**  
 County **PALM BEACH** State **FL**  
 Location

Date **10-JUN-2008**  
 Run Number **MIT 08**  
 Depth Driller **3407**  
 Depth Logger **3407**  
 Bottom Logged Interval **3407**  
 Top Log Interval **3407**  
 Open Hole Size **CASING**  
 Type Fluid **WATER**  
 Density / Viscosity **N/A**  
 Max. Recorded Temp. **88 DEGF**  
 Estimated Cement Top **N/A**  
 Time Well Ready **ON ARRIVAL**  
 Time Logger on Bottom **0000**  
 Equipment Number **102**  
 Location **FT. MYERS**  
 Recorded By **LEE**  
 Witnessed By **MC NABB**

Run Number	Borehole Record		Run Number	Borehole Record	
	BR	From		BR	From
	NA	CASING	3407		

Casing Record	Size	Weight	Top		Bottom
			Surface	Surface	
Casing String	20"	500 W.T.	2783'		
Casing String	18" FRP	880 W.T.	2774'		

Other Services  
 SEE COMMENTS  
 Elevation  
 K.B.  
 D.F.  
 G.L.

Permanent Datum **PAD** Elevation  
 Log Measured From **PAD**  
 Drilling Measured From **PAD**

Comments

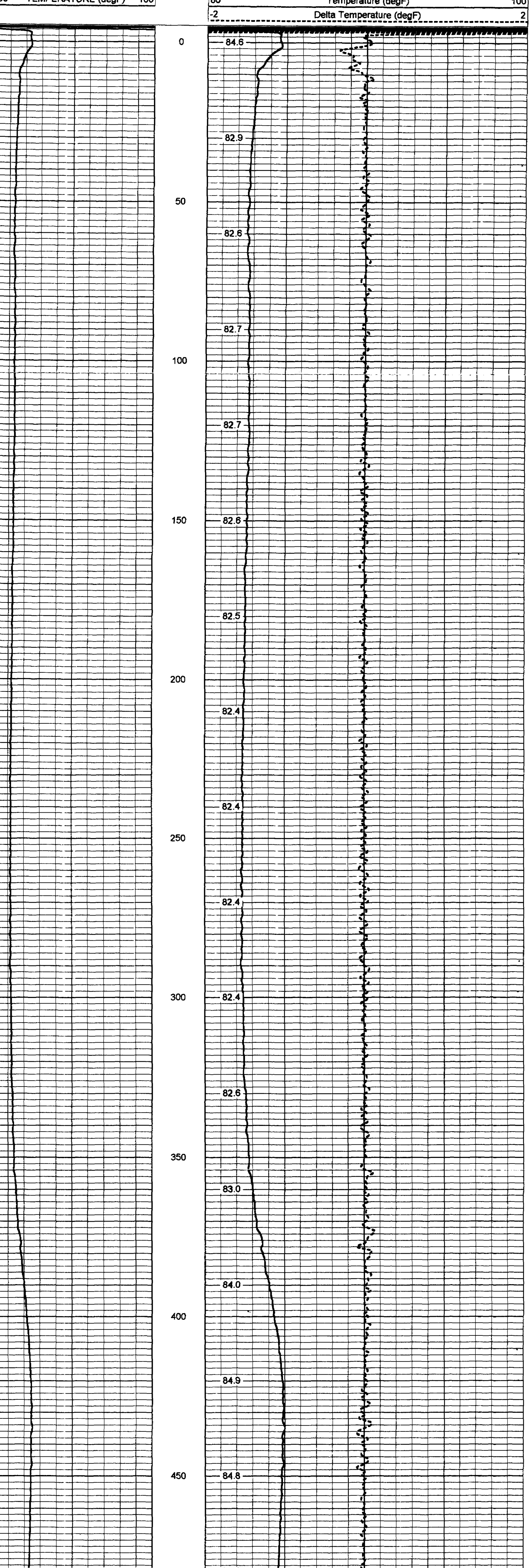
RTS

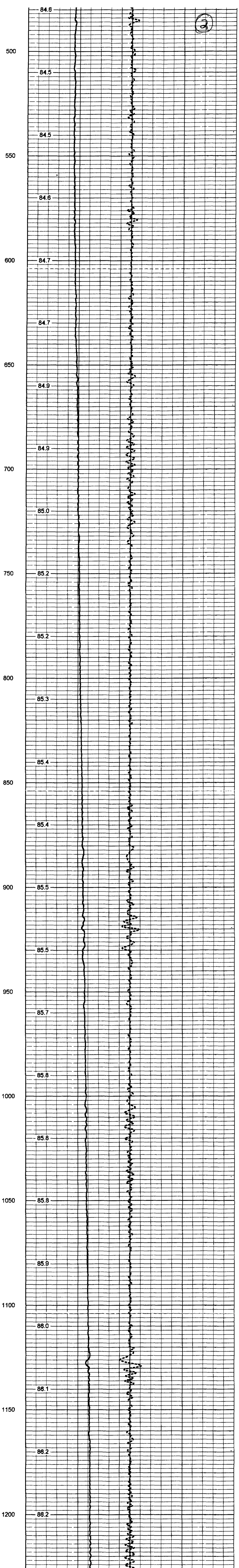
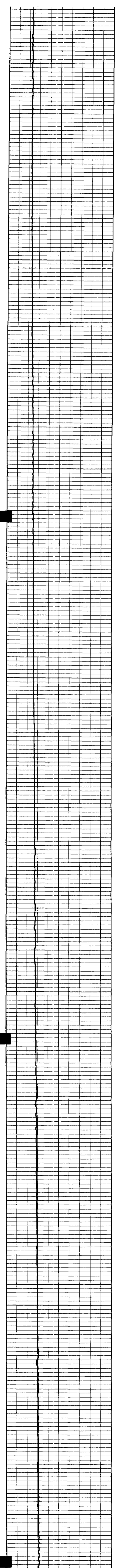
All interpretations are opinions based on inferences from electrical or other measurements and we cannot and do not guarantee the accuracy or correctness of any interpretation, and we shall not, except in the case of gross or willful negligence on our part, be liable or responsible for any loss, costs, damages, or expenses incurred or sustained by anyone resulting from any interpretation made by any of our officers, agents or employees. These interpretations are also subject to our general terms and conditions set out in our current Price Schedule.

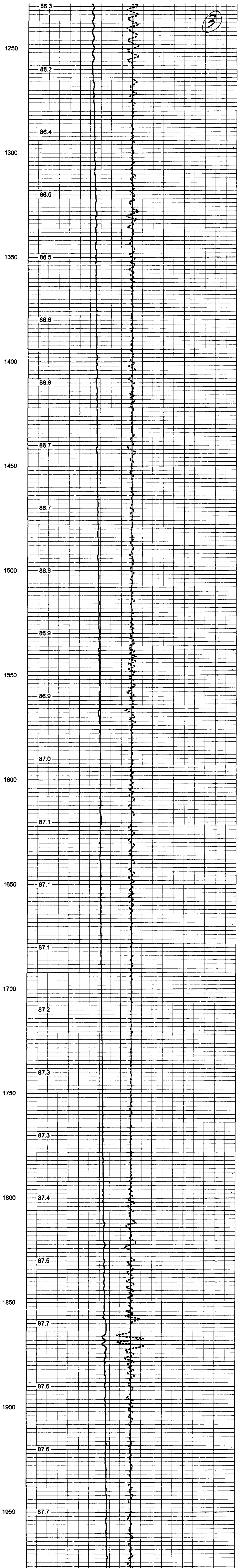
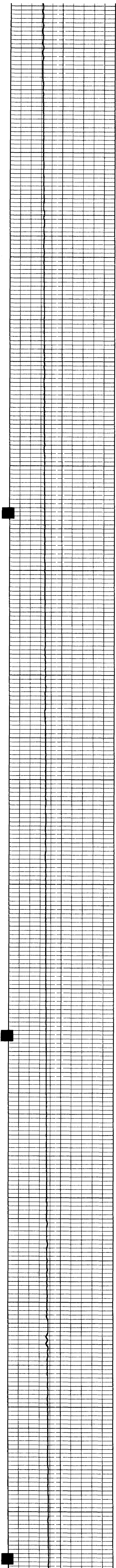
**YOUNGQUIST BROTHERS, Inc**  
 GEOPHYSICAL LOGGING DIVISION

# TEMPERATURE

Database File: **fpliw1.db**  
 Dataset Pathname: **TEMP**  
 Presentation Format: **temp**  
 Dataset Creation: **Tue Jun 10 11:41:16 2008 by Log 6.2\_B4**  
 Charted by: **Depth in Feet scaled 1:240**



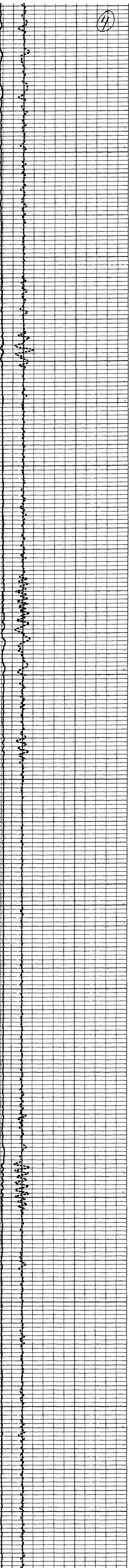
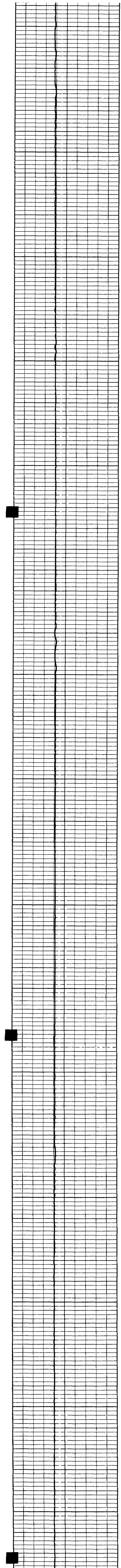


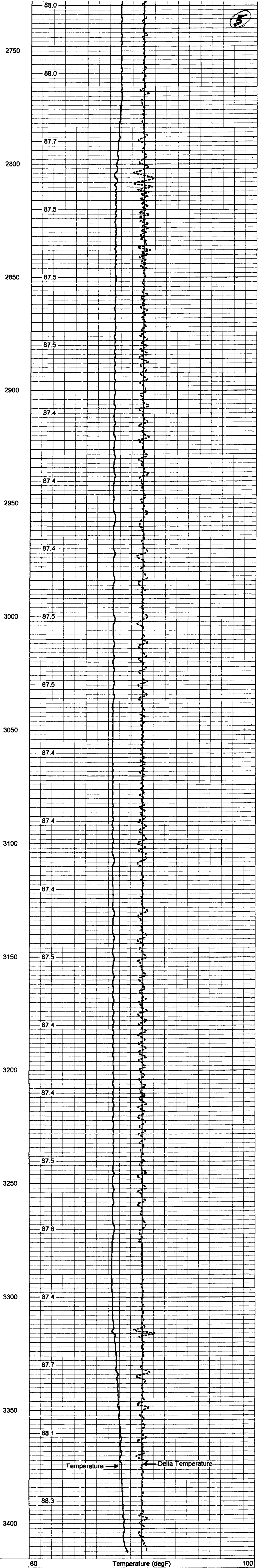
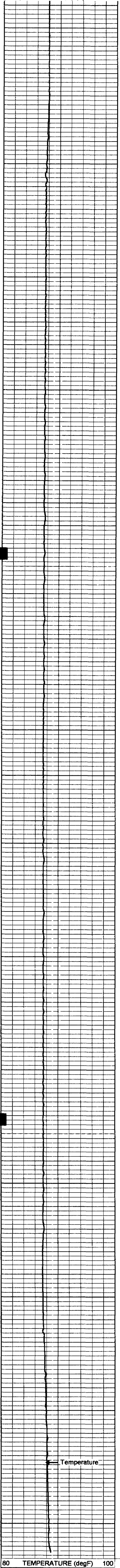


(4)

2000  
2050  
2100  
2150  
2200  
2250  
2300  
2350  
2400  
2450  
2500  
2550  
2600  
2650  
2700

87.7  
87.7  
87.8  
87.9  
87.9  
88.0  
88.0  
88.1  
88.1  
88.0  
88.2  
88.2  
88.2  
88.2  
88.2  
88.2  
88.2  
88.2  
88.1  
88.0  
88.0  
88.1  
88.0  
88.0  
88.0





Temperature Calibration Report

Serial Number:  
Tool Model:  
Performed:

954  
RTS  
Tue Jun 06 16:26:48 2006

6

Point #	Reading		Reference	
1	342.2	cps	34	degF
2	865.2	cps	86	degF
3	1553.28	cps	152	degF

TEMP-RTS (954)  
70.00 lb 1.69 in OD 25.50 ft

TEMP 0.10 ft

Dataset: run1/TEMP  
Total Length: 25.50 ft  
Total Weight: 70.00 lb  
O.D.: 1.69 in