

Company CITY OF NORTH MIAMI
 Well MW #1
 Field NORWOOD-OEFFLER W.T.P. EXP.
 County DADE
 State FLORIDA

Company CITY OF NORTH MIAMI BEACH W.T.P.
 Well MW #1
 Field NORWOOD-OEFFLER W.T.P. EXP.
 County DADE
 State FLORIDA

Location
 Permanent Datum PAD
 Log Measured From PAD
 Drilling Measured From PAD
 Elevation
 Other Services SEE COMMENTS
 Elevation K.B. D.F. G.L.

Date	NOV 29, 2004			
Run Number	FOUR			
Depth Driller	1910'			
Bottom Logged Interval	1910'			
Top Log Interval	CASING			
Open Hole Size	12.25"			
Type Fluid	WATER			
Density / Viscosity	NA			
Max. Recorded Temp.	NA			
Estimated Cement Top	NA			
Time Well Ready	ON ARRIVAL			
Time Logger on Bottom	1230			
Equipment Number	103			
Location Recorded By	FT. MYERS FERGUSON C. GEASLER			
Witnessed By				
Run Number	ONE			
Bit	40"			
From	SURFACE			
To	485'			
Run Number	TWO			
Bit	12.25"			
From	CASING			
To	985'			
Run Number	THREE			
Bit	28.5"			
From	CASING			
To	970'			
Run Number	FOUR			
Bit	12.25"			
From	CASING			
To	1910'			
Casing Record	Size	Weight	From	To
Surfacing String	30"	3.75 W.T.	Top SURFACE	Bottom 480'
Prot. String	24"	3.75 W.T.	Top SURFACE	Bottom 980'
Production String				

<<< Fold Here >>>

All interpretations are opinions based on inferences from electrical or other measurements and we cannot and do not guarantee the accuracy or correctness of any interpretation, and we shall not, except in the case of gross or willful negligence on our part, be liable or responsible for any loss, costs, damages, or expenses incurred or sustained by anyone resulting from any interpretation made by any of our officers, agents or employees. These interpretations are also subject to our general terms and conditions set out in our current Price Schedule.

Comments

X-Y CALIPER
 DUAL INDUCTION
 BOREHOLE COMPENSATED SONIC
 BOREHOLE TELEVIEWER
 FLOWMETER

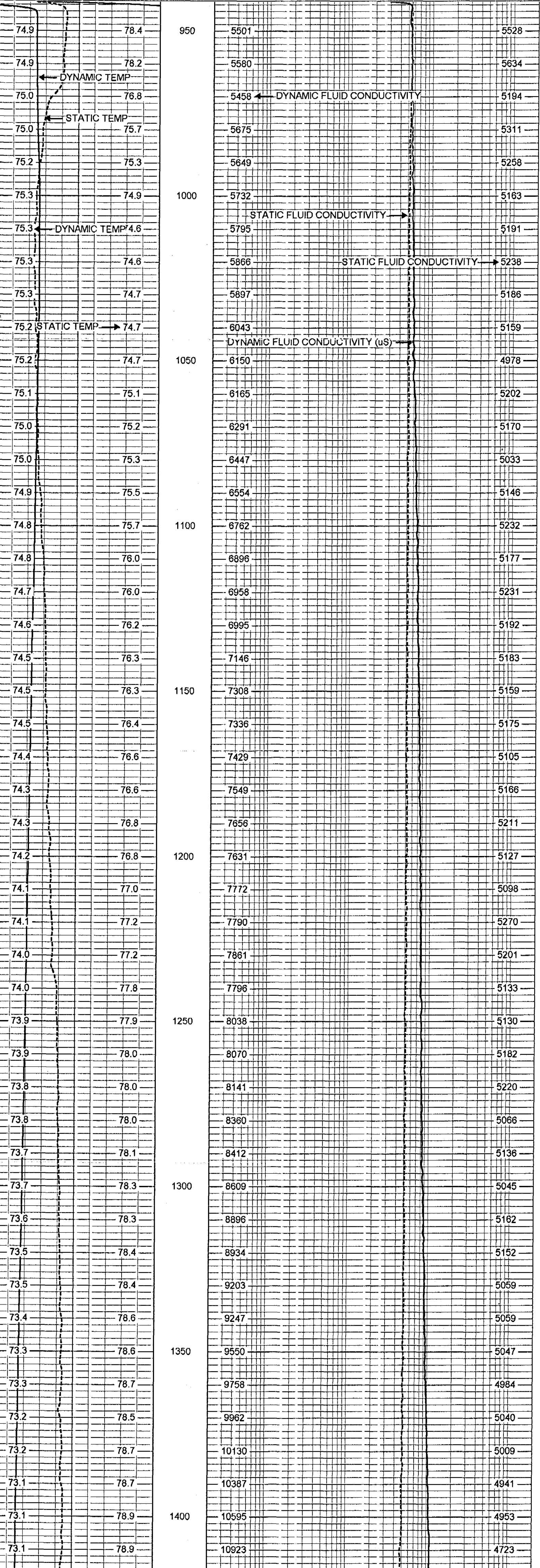
FLOW RATE = 500 GPM

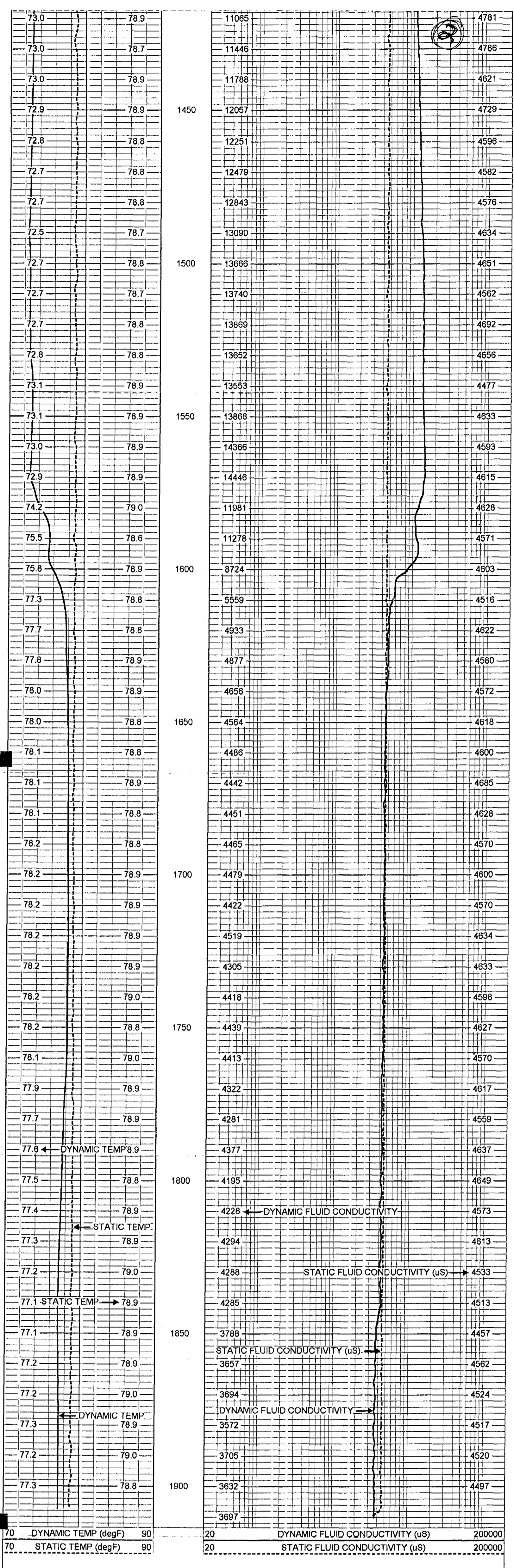
YOUNGQUIST BROTHERS, Inc
 GEOPHYSICAL LOGGING DIVISION

MERGED FCT - 500 GPM

Database File: ntmbmw1.db
 Dataset Pathname: run4/pass14
 Presentation Format: frt_mg
 Dataset Creation: Mon Nov 29 23:58:54 2004 by Log 6.2_B4
 Charted by: Depth in Feet scaled 1:240

70	DYNAMIC TEMP (degF)	90	20	DYNAMIC FLUID CONDUCTIVITY (uS)	200000
70	STATIC TEMP (degF)	90	20	STATIC FLUID CONDUCTIVITY (uS)	200000





FRT Calibration Report

Serial Number:	31		
Tool Model:	SONDEX		
Performed:	Thu Apr 22 09:03:45 2004		
Point #	Reading		Reference
1	30.817	cps	1000.000
2	171.328	cps	10000.000
3	445.517	cps	25000.000
4	965.867	cps	50000.000
5		cps	
6		cps	

Temperature Calibration Report

Serial Number:	31			
Tool Model:	SONDEX			
Performed:	Thu Apr 22 09:31:10 2004			
Point #	Reading		Reference	
1	128.595	cps	41	degF
2	265.557	cps	70	degF
3	697.393	cps	156	degF

