



# FLUID CONDUCTIVITY TEMPERATURE LOG

Company **MISSIMMER INTERNATIONAL**  
 Well **MONITOR WELL #1**  
 Field **ISLAND WATER ASSOCIATION**  
 Country **LEE RECEIVED** State/Prv **FLORIDA**

DE.P. - South District

DEC 28 1999

Company **MISSIMMER INTERNATIONAL**  
 Well **MW - 1**  
 Field **I.W.A**  
 Country **LEE**  
 State/Prv **FLORIDA**

Permanent Datum **PAD** Elevation **5'**  
 Log Measured From **PAD**  
 Drilling Measured From **PAD**

Other Services **NONE**  
 Elevation **K.B. D.F. G.L.**

Date	14-DEC-99
Run Number	THREE
Depth Driller	1700'
Depth Logger	1698'
Bottom Logged Interval	1698'
Top Log Interval	CASING
Open Hole Size	11.75"
Type Fluid	WATER
Density / Viscosity	N/A
Max. Recorded Temp	N/A
Estimated Cement Top	N/A
Time Well Ready	1230
Time Logger on Bottom	1300
Equipment Number	103
Location	FTMYERS
Recorded By	DENISON
Witnessed By	R. STROSS

Run Number	Borehole Record		Tubing Record	
	Bit	From	To	Size
ONE	18"	SURFACE	426'	
TWO	11.75"	SURFACE	1700'	

Casing Record	Surface String	Prot. String	Production String	Liner	Size	Wgt/H	Top	Bottom
					12.75"	375 W.T.	SURFACE	420'

<<< Fold Here >>>

All interpretations are opinions based on inferences from electrical or other measurements and we cannot and do not guarantee the accuracy or correctness of any interpretation, and we shall not, except in the case of gross or willful negligence on our part, be liable or responsible for any loss, costs, damages, or expenses incurred or sustained by anyone resulting from any interpretation made by any of our officers, agents or employees. These interpretations are also subject to our general terms and conditions set out in our current Price Schedule.

### Comments

FLOWRATE = 80 GPM



Entered into  
**OCULUS**  
 South District



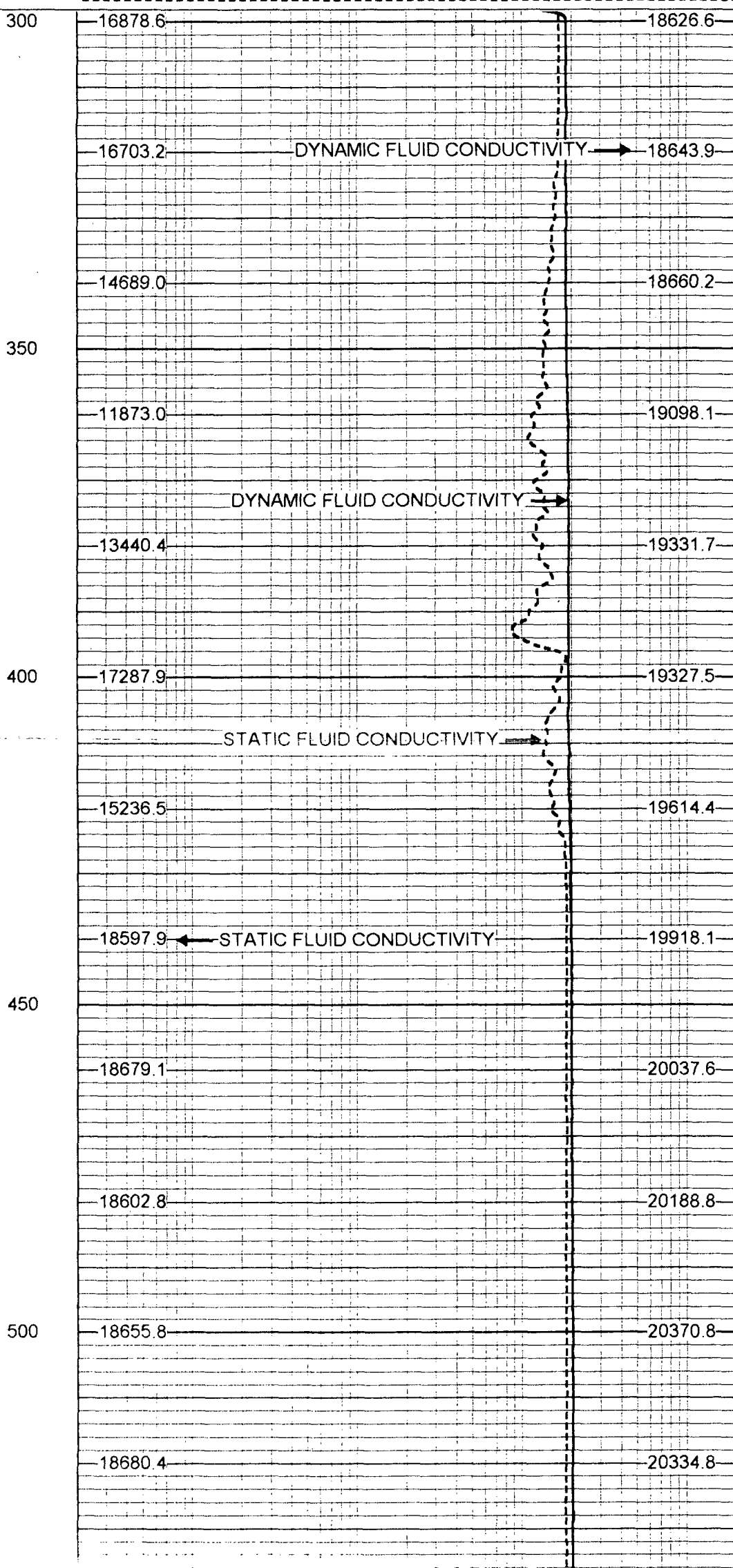
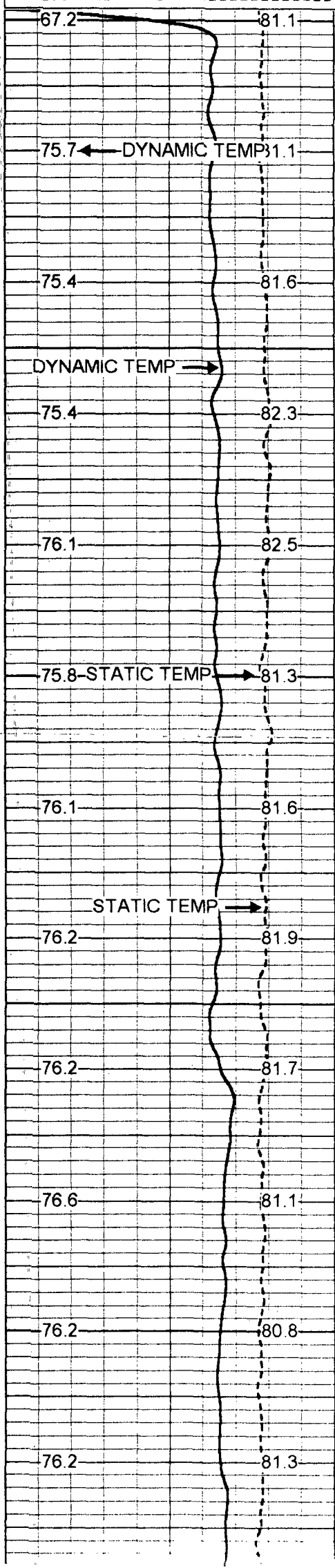
# STATIC & DYNAMIC FCT

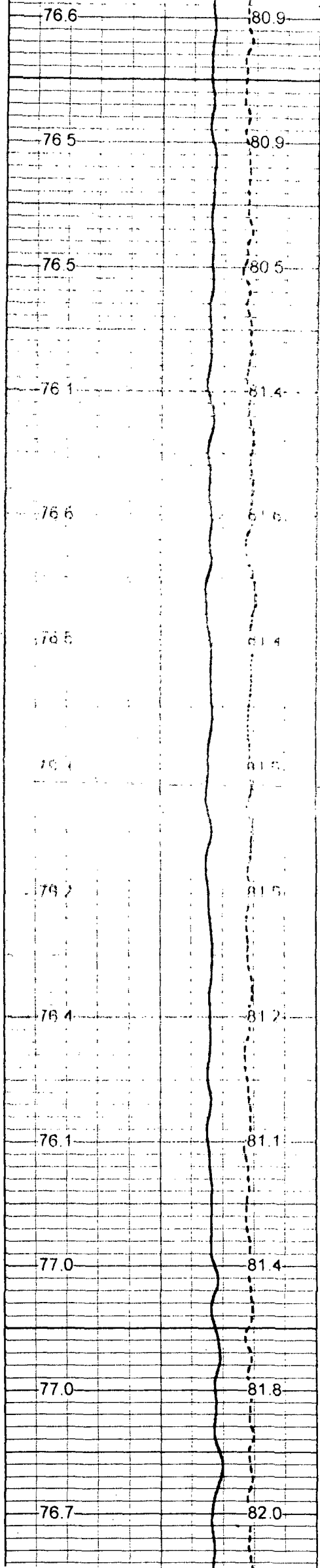
Database File: sanmw1.db  
 Dataset Pathname: run3/pass8  
 Presentation Format: frt\_mg.prs  
 Dataset Creation: Thu Dec 23 08:25:58 1999

Charted by: Depth in Feet scaled 1:240

50 DYNAMIC TEMP (degF) 90  
 50 STATIC TEMP (degF) 90

20 DYNAMIC FLUID CONDUCTIVITY 200000  
 20 STATIC FLUID CONDUCTIVITY 200000





550

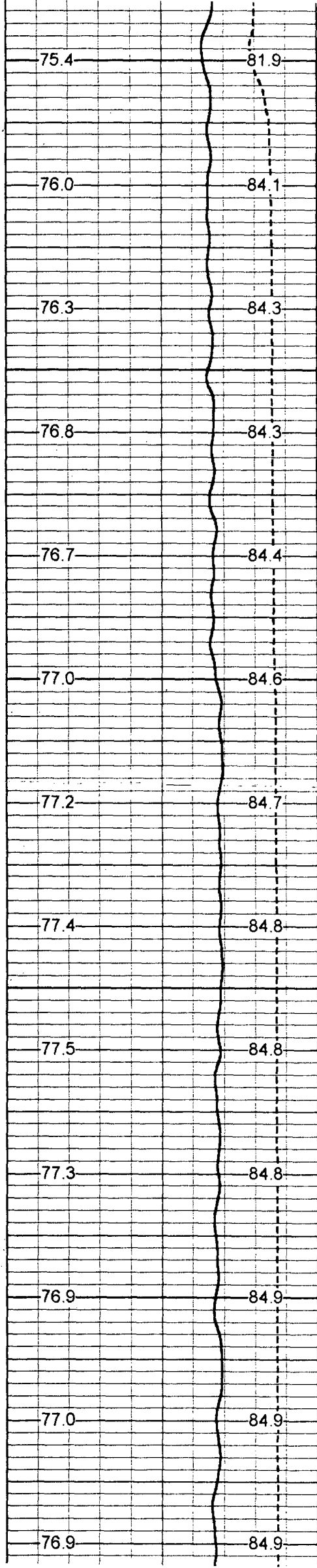
600

650

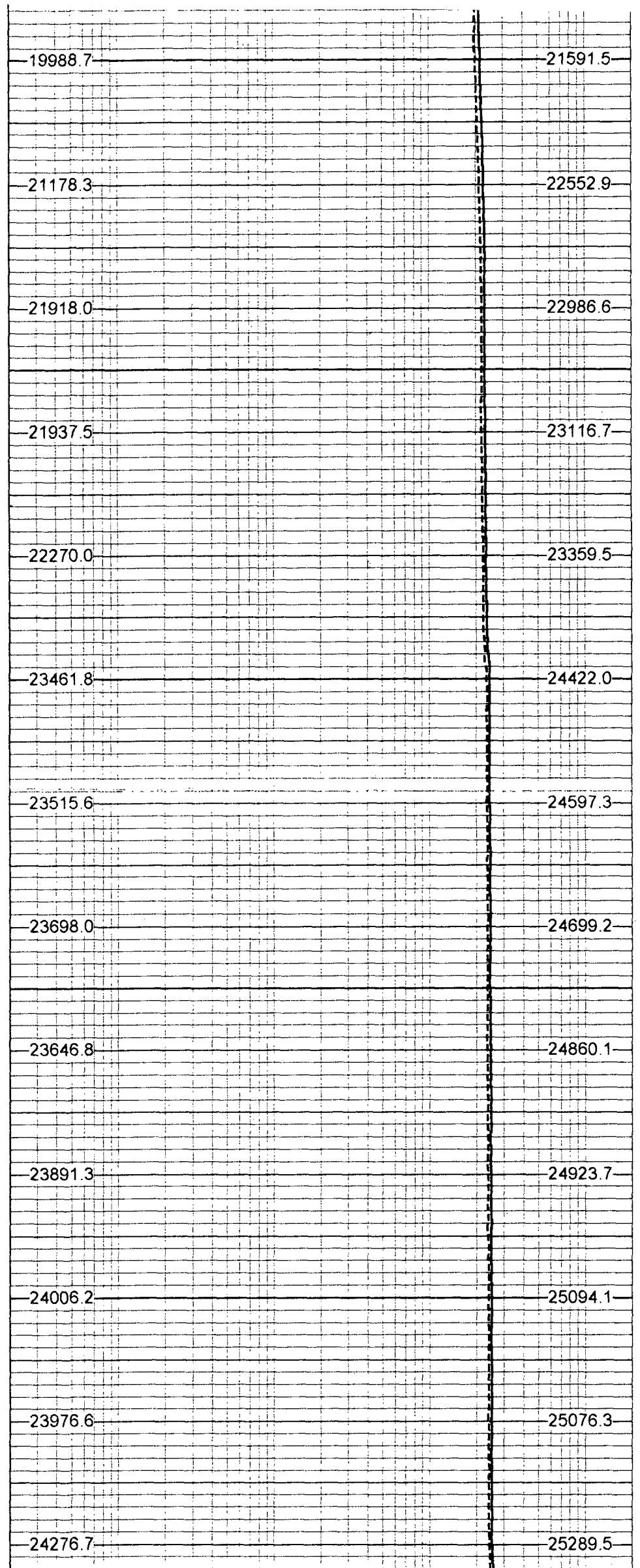
700

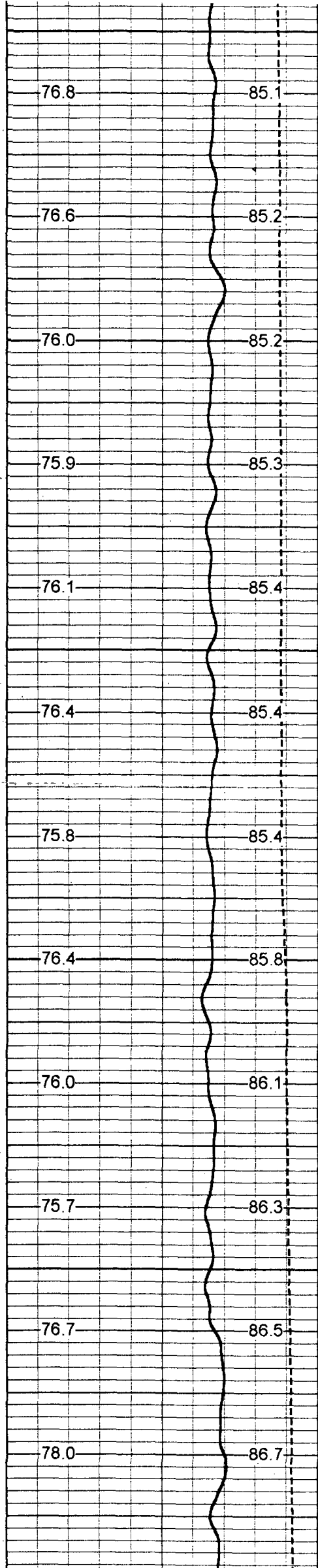
750

18663.8	20505.8
18665.7	20520.7
18792.6	20688.0
18608.1	20551.9
19170.9	20668.1
19174.1	20800.9
19082.7	20768.6
19240.6	20635.6
19288.7	20575.4
19429.1	20735.8
19393.8	20708.5
19282.9	20803.3
19461.8	20907.8



800  
850  
900  
950  
1000





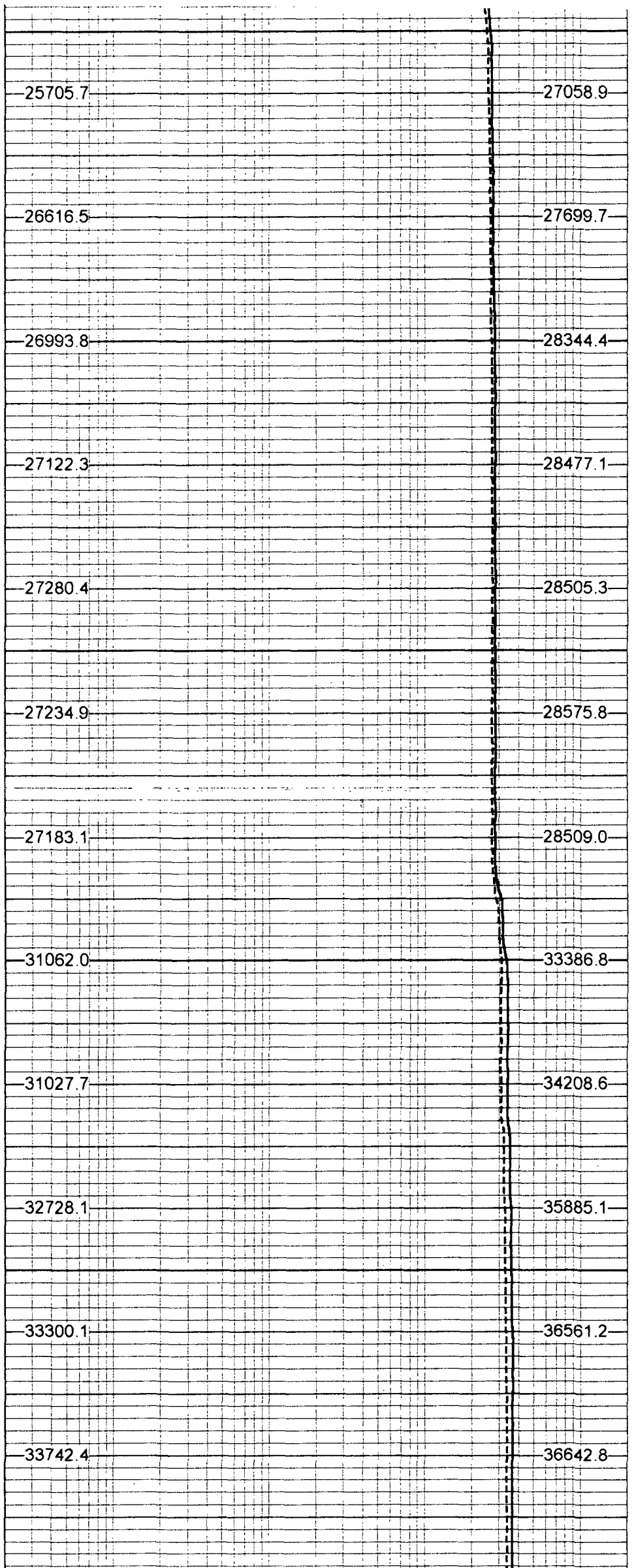
1050

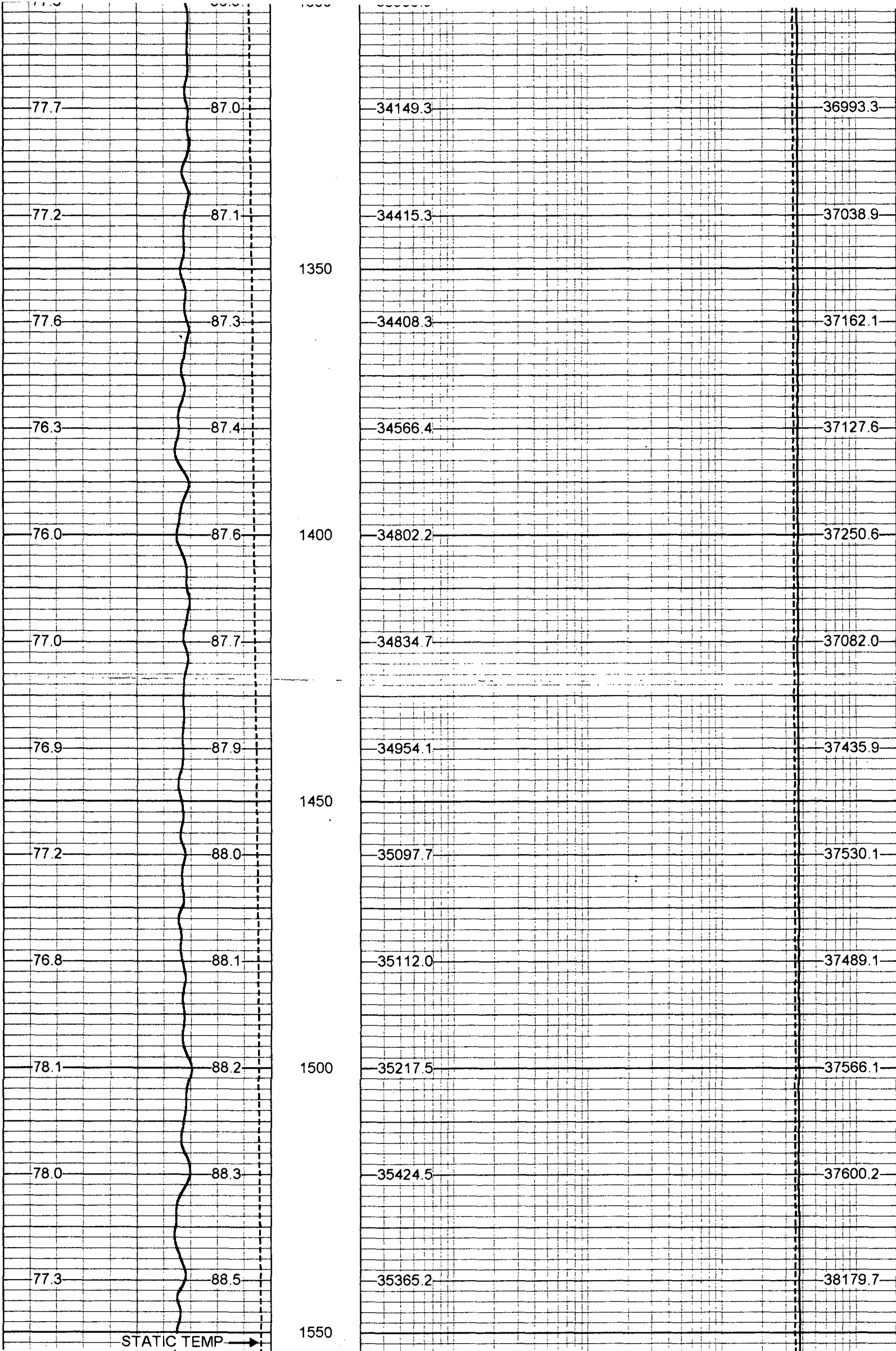
1100

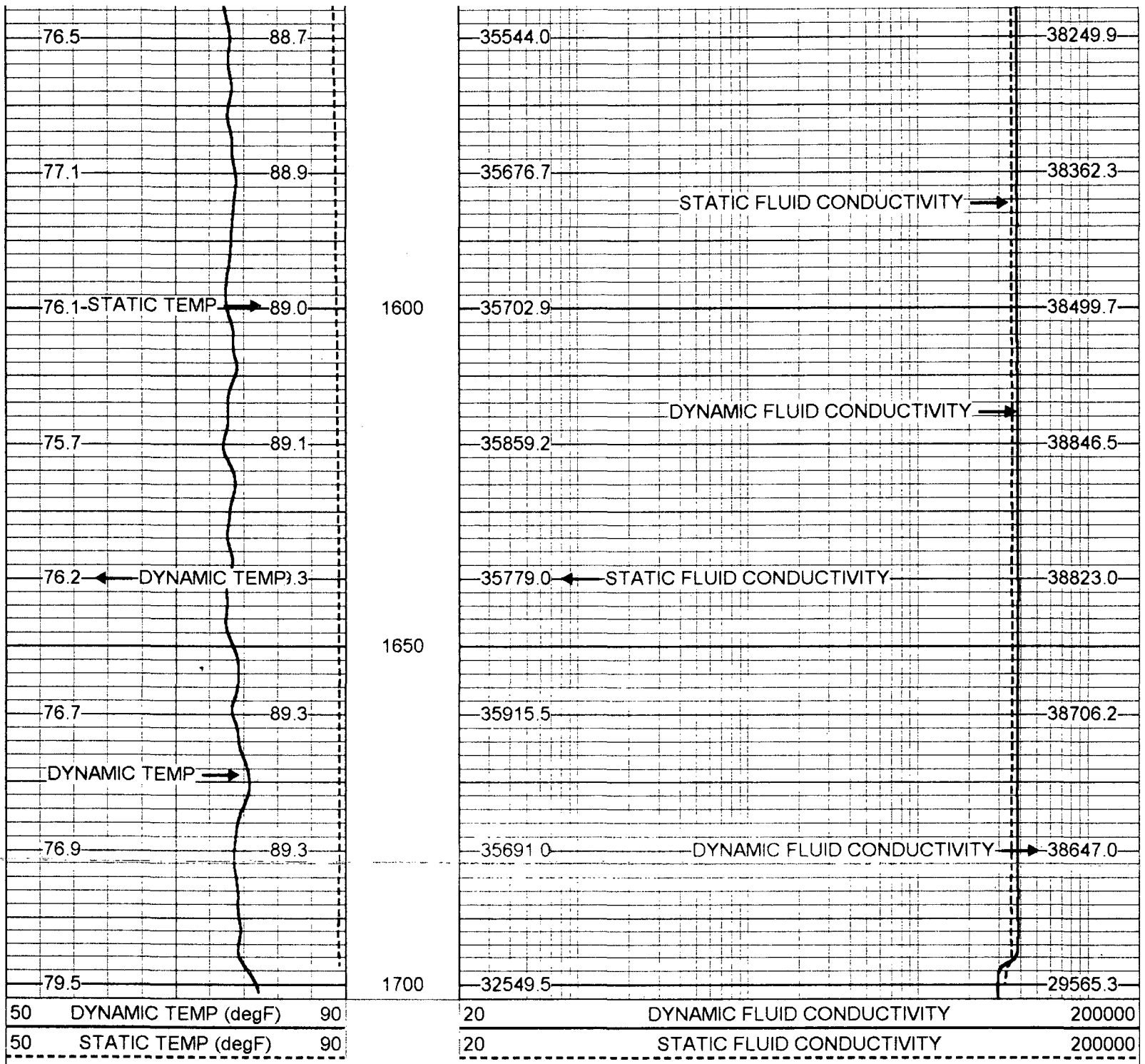
1150

1200

1250







### FRT Calibration Report

Serial Number:	30
Tool Model:	SONDEX
Performed:	Thu Sep 02 16:02:11 1999

Point #	Reading	Reference
1	28.607 cps	500.000
2	43.277 cps	1000.000
3	419.480 cps	10000.000
4	2384.150 cps	50000.000
5		
6		

### Temperature Calibration Report

Serial Number:	30
Tool Model:	SONDEX
Performed:	Wed Sep 01 14:25:57 1999

Point #	Reading	Reference
1	129.745 cps	35 degF
2	413.774 cps	94 degF
3	668.279 cps	145 degF

TEMP 0.70 ft

FRES 0.50 ft



TEMP-SONDEX (30) 10.00 lb 1.62 in OD 1.20 ft

FRT-SONDEX (30) 10.00 lb 1.69 in OD 0.60 ft

Dataset: run3/pass8  
Total Length: 1.80 ft  
Total Weight: 20.00 lb  
O.D. 1.69 in