



**YOUNGQUIST BROTHERS, Inc**  
GEOPHYSICAL LOGGING DIVISION

**TEMPERATURE LOG**  
MAR 30 2005

Company **WATER RESOURCES**  
Well **IW #1 (LM-7973)**  
Field **GPIWA**  
County **LEE**  
State **FLORIDA**

Company **WATER RESOURCES SOLUTIONS**  
Well **IW #1 (LM-7973)**  
Field **GPIWA**  
County **LEE** State **FLORIDA**

Location **SE NE S33 T44S R22E**  
Permanent Datum **PAD** Elevation  
Log Measured From **PAD**  
Drilling Measured From **PAD**  
Date **MAY 4, 2004**  
Run Number **EIGHT**  
Depth Driller **3015'**  
Depth Logger **3015'**  
Bottom Logged Interval **3015'**  
Top Log Interval **CASING**  
Open Hole Size **12.25"**  
Type Fluid **WATER**  
Density / Viscosity **NA**  
Max. Recorded Temp. **94.4 F**  
Estimated Cement Top **NA**  
Time Well Ready **0000**  
Time Logger on Bottom **0030**  
Equipment Number **103**  
Location **FT. MYERS**  
Recorded By **CATHEY**  
Witnessed By **D. ACQUAVIVA**

Other Services  
**SEE COMMENTS**

Elevation  
K.B. 10.75' est  
D.F. 7' est  
G.L.

Borehole Record		Tubing Record				
Run Number	Bit	From	To	Weight	From	To
ONE	12.25"	CASING	605'	FIVE	34.5"	1245'
TWO	46.5"	CASING	605'	SIX	12.25"	3015'
THREE	12.25"	CASING	1118'			
FOUR	12.25"	CASING	1260'			

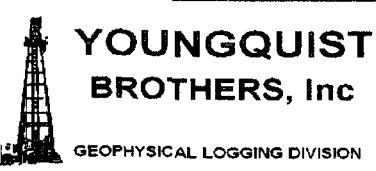
Casing Record		Top		Bottom	
Surfacing String	Size	Wgt/Ft	Top	Bottom	
Surfacing String	48"	375 W.T.	SURFACE	55'	
Prot. String	36"	375 W.T.	SURFACE	600'	
Production String	28"	375 W.T.	SURFACE	1240'	
Liner					

<<< Fold Here >>>

All interpretations are opinions based on inferences from electrical or other measurements and we cannot and do not guarantee the accuracy or correctness of any interpretation, and we shall not, except in the case of gross or willful negligence on our part, be liable or responsible for any loss, costs, damages, or expenses incurred or sustained by anyone resulting from any interpretation made by any of our officers, agents or employees. These interpretations are also subject to our general terms and conditions set out in our current Price Schedule.

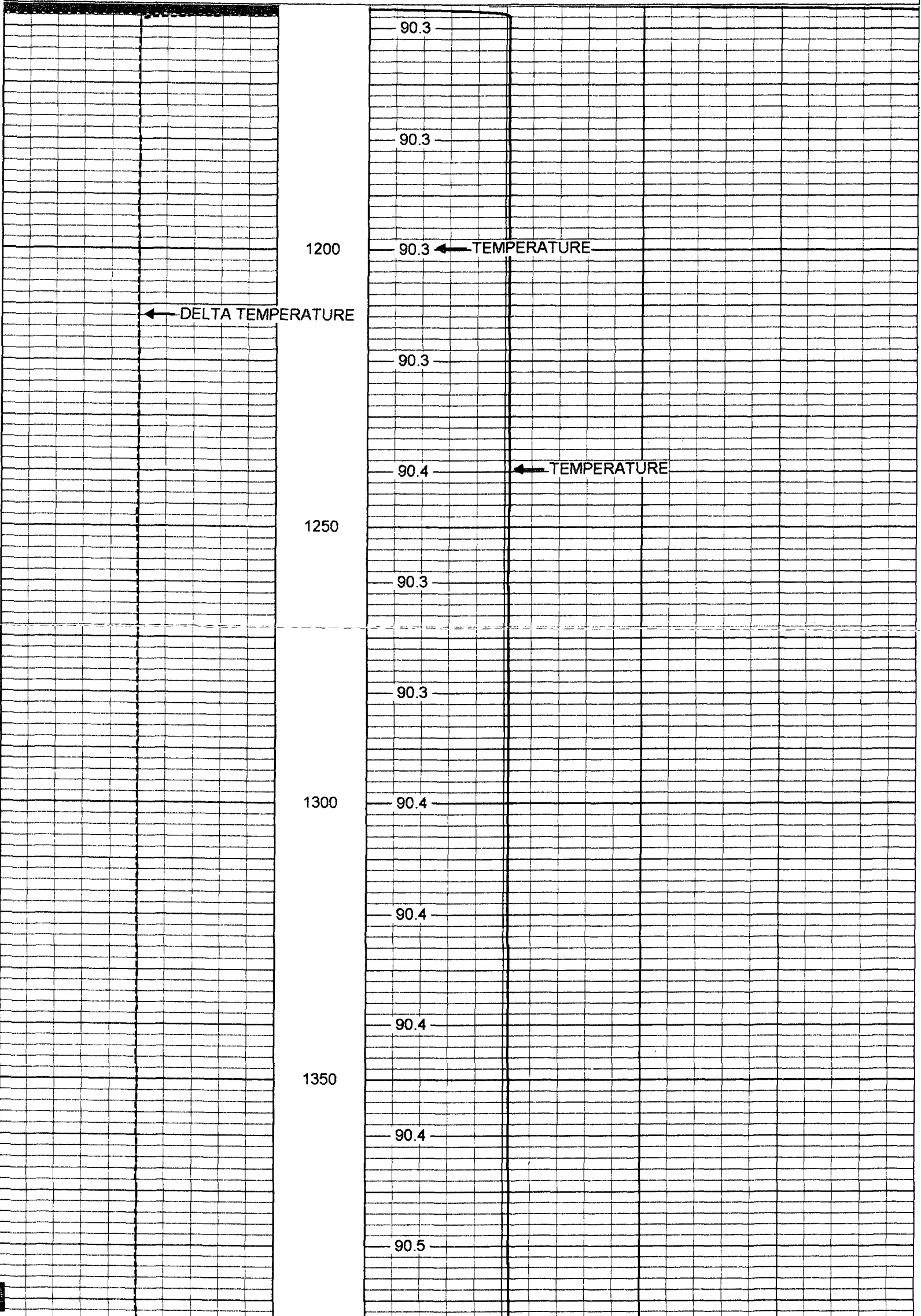
**Comments**

**OTHER SERVICES:**  
XY-CALIPER / GAMMA RAY  
DUAL INDUCTION  
BOREHOLE COMPENSATED SONIC  
FLOWMETER  
VIDEO



**TEMPERATURE**

Database File: piw1.db  
Dataset Pathname: run8/pass1  
Presentation Format: temp  
Dataset Creation: Mon May 03 23:36:39 2004 by Log 6.2\_B4  
Checked by: [blank]



1400

90.5

90.6

90.6

1450

90.7

90.7

1500

90.7

90.8

90.8

1550

90.8

90.9

1600

91.0

91.1

91.2

1650

91.2

91.3

1700

91.4

91.5

91.6

1750

91.6

91.7

1800

91.8

91.8

91.9

1850

92.1

92.2

1900

92.2

92.2

92.2

1950

92.2

92.2

2000

92.2

92.2

92.2

2050

92.2

92.2

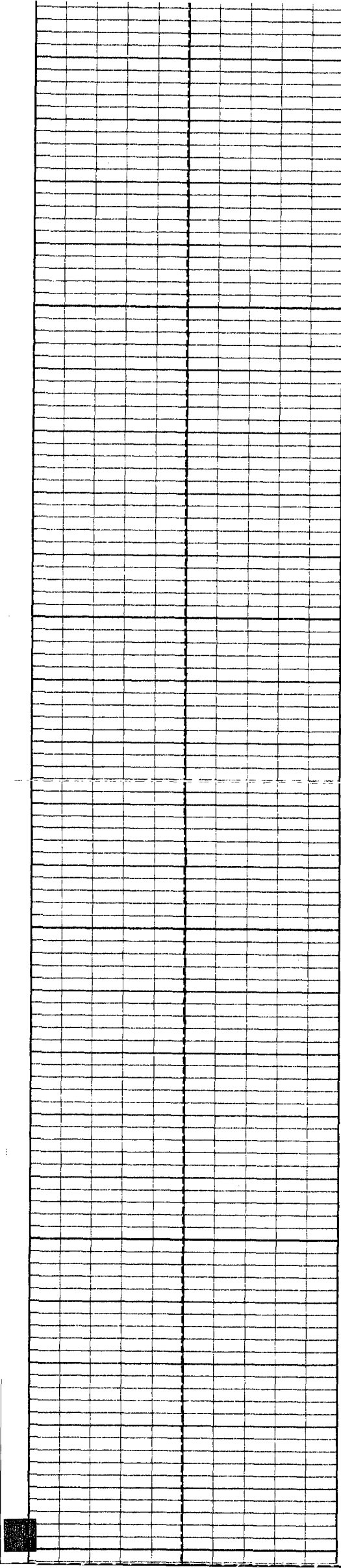
2100

92.1

92.1

92.1

2150



2200

2250

2300

2350

2400

92.1

92.1

92.1

92.1

92.1

92.1

92.1

92.2

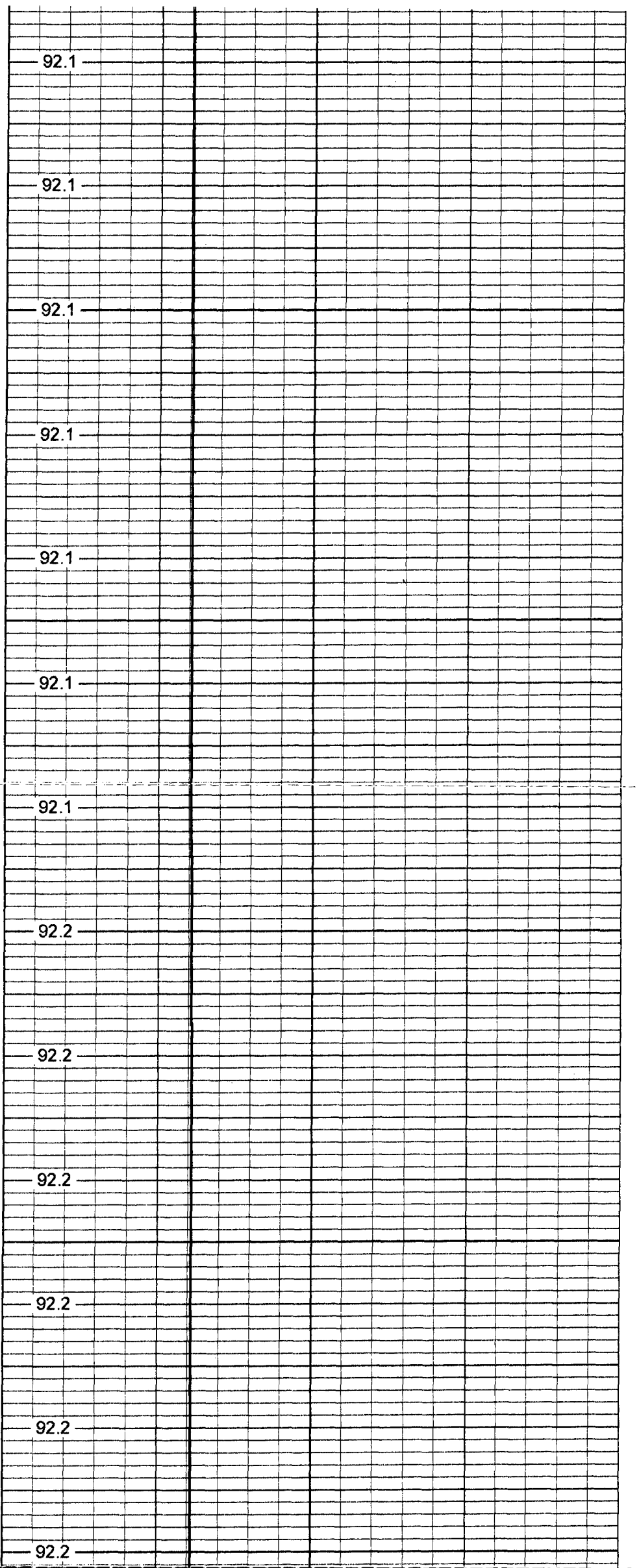
92.2

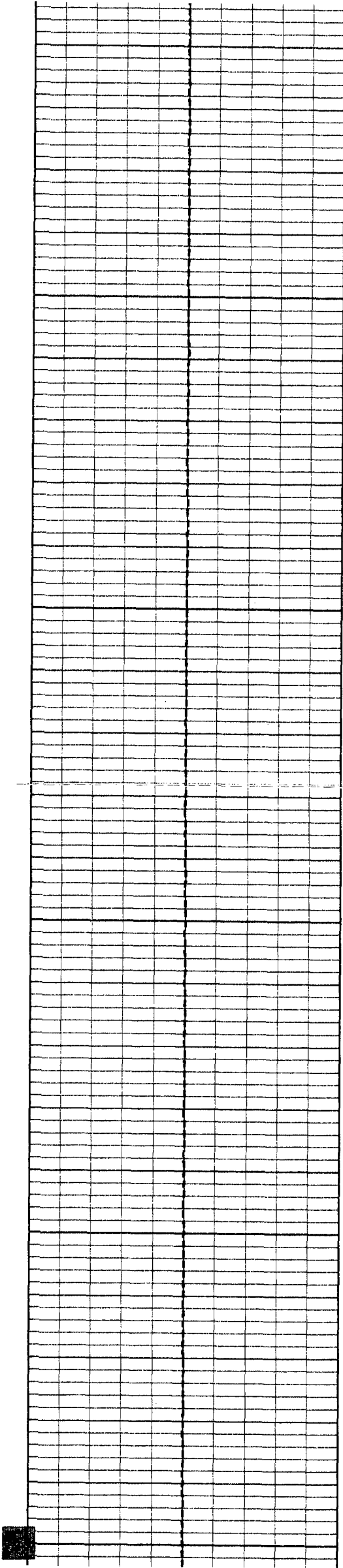
92.2

92.2

92.2

92.2





2450

2500

2550

2600

2650

92.2

92.3

92.4

92.5

92.6

92.6

92.7

92.7

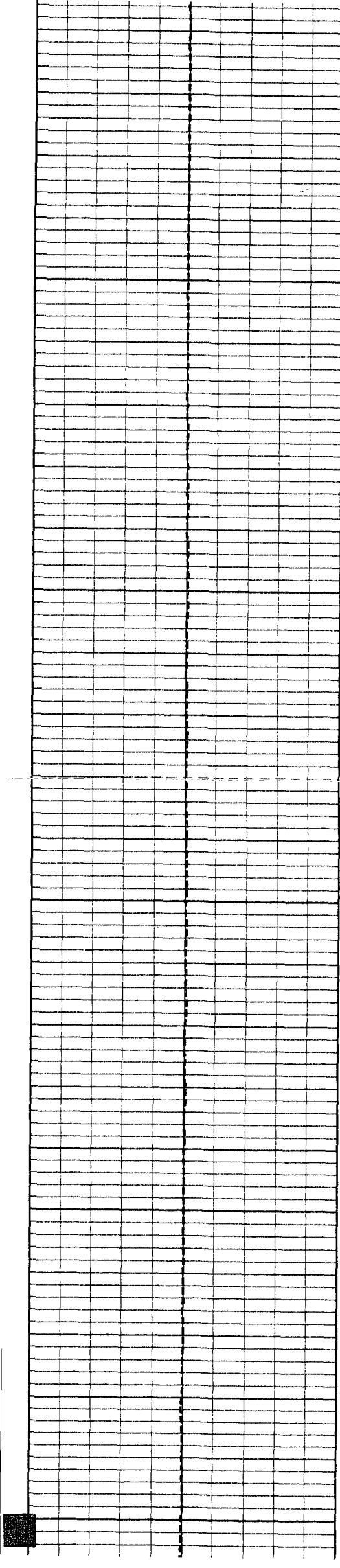
92.7

92.8

92.8

92.9





2700

2750

2800

2850

2900

92.9

93.0

93.1

93.1

93.2

93.4

93.7

93.9

94.1

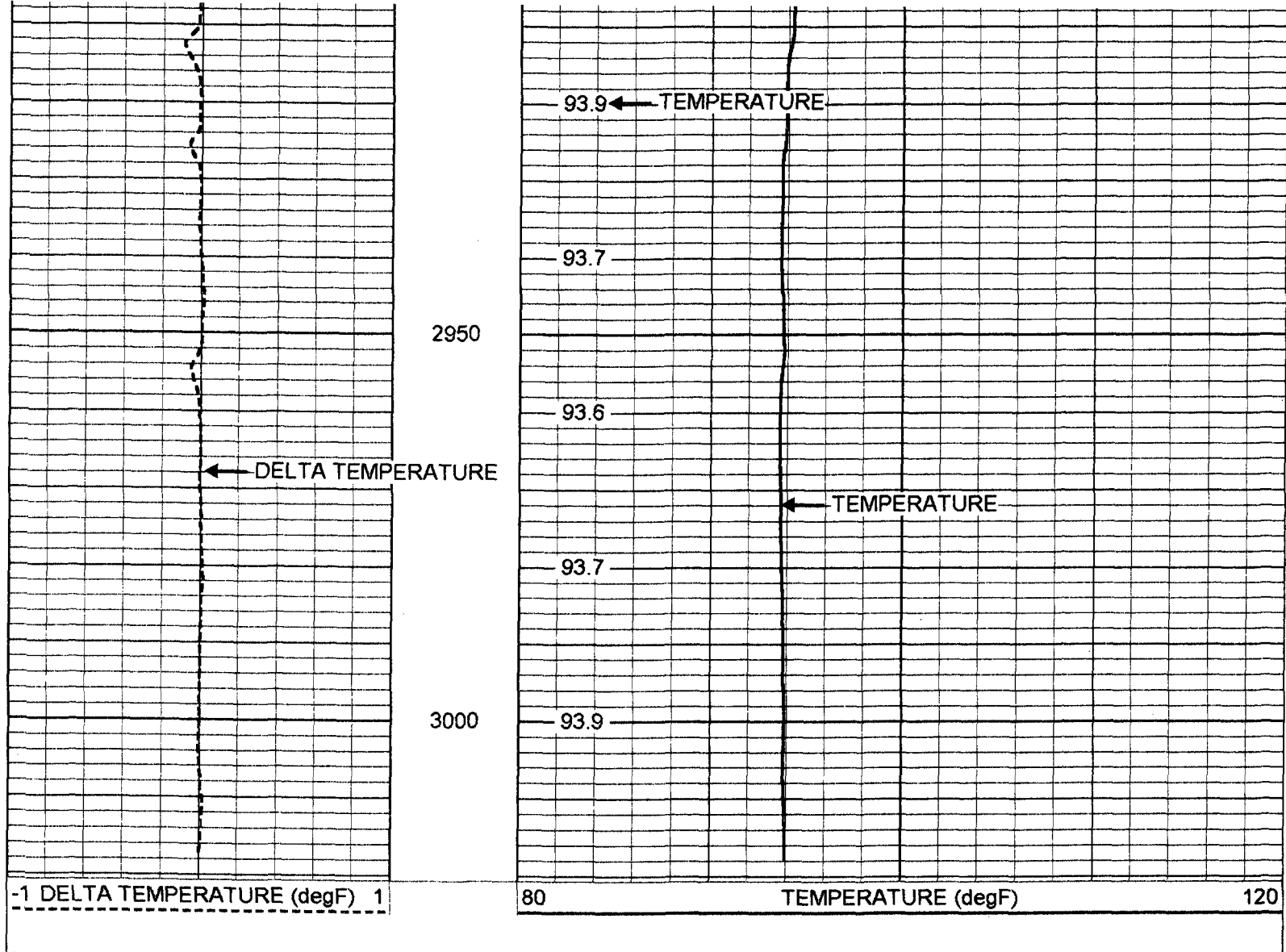
94.2

94.3

94.4

94.3





**Temperature Calibration Report**

Serial Number:	17	
Tool Model:	MLS	
Performed:	Thu Apr 22 12:56:07 2004	

Point #	Reading		Reference	
1	320.1	cps	32	degF
2	700.1	cps	70	degF
3	2000.1	cps	200	degF

