



YOUNGQUIST BROTHERS, Inc
TEMPERATURE LOG
 GEOPHYSICAL LOGGING DIVISION
 JUL 20 2004

Company **WATER RESOURCES**
 Well **DZMW (LM-7974)**
 Field **GPIWA**
 County **LEE**
 State/Prv **FLORIDA**

Company **WATER RESOURCE SOLUTIONS**
 Well **DZMW (LM-7974)**
 Field **GPIWA**
 County **LEE**
 State/Prv **FLORIDA**

Location **SE NE S33 T44S R22E**

Permanent Datum **PAD**
 Log Measured From **PAD**
 Drilling Measured From **PAD**

Elevation **SEE COMMENTS**

Other Services **SEE COMMENTS**

Date **JULY 17, 2004**

K.B. **10.75' est**
 D.F. **7' est**
 G.L. **7' est**

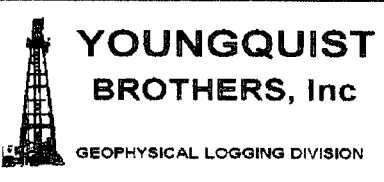
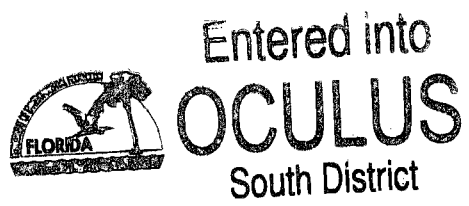
Run Number	ONE	ONE	TWO	THREE	FOUR	Size	30"	375 W.T.	18"	10.75"	375 W.T.	50'	600'	985'
Bit	26.5"	12.25"	17"	9.7/8"	CASING	From	605'	1119'	987'	1395'	Wgt/Ft	375 W.T.	375 W.T.	375 W.T.
Run Number	TWO	THREE	FOUR			Bit	5.5"	1395'	1470'		Top	SURFACE	SURFACE	SURFACE
Run Number	ONE	TWO	THREE	FOUR		From	1395'	1470'			Bottom	50'	600'	985'

<<< Fold Here >>>

All interpretations are opinions based on inferences from electrical or other measurements and we cannot and do not guarantee the accuracy or correctness of any interpretation, and we shall not, except in the case of gross or willful negligence on our part, be liable or responsible for any loss, costs, damages, or expenses incurred or sustained by anyone resulting from any interpretation made by any of our officers, agents or employees. These interpretations are also subject to our general terms and conditions set out in our current Price Schedule.

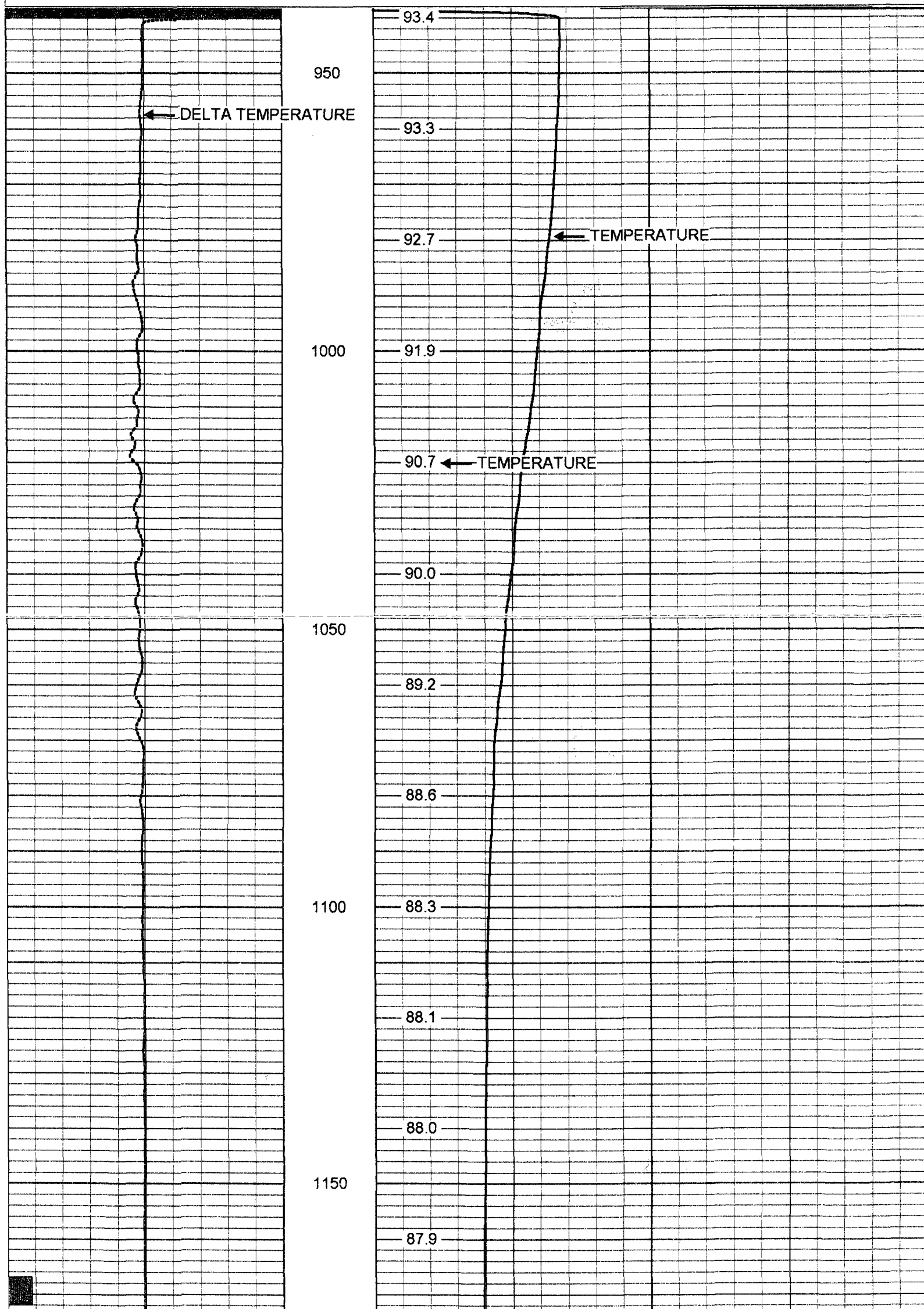
Comments

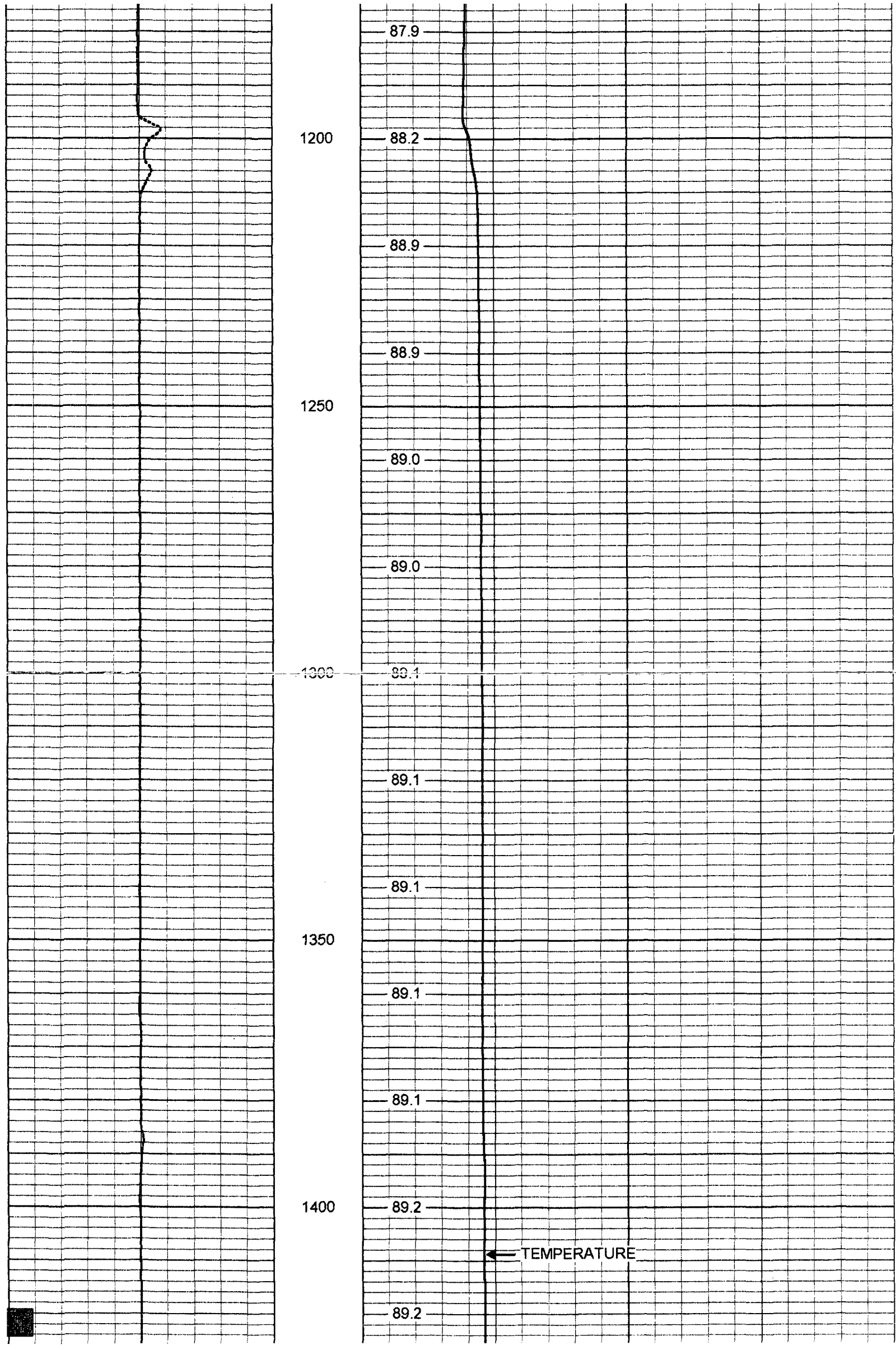
OTHER SERVICES:
 X-Y CALIPER / GAMMA RAY
 DUAL INDUCTION
 BOREHOLE COMPENSATED SONIC
 FLOWMETER

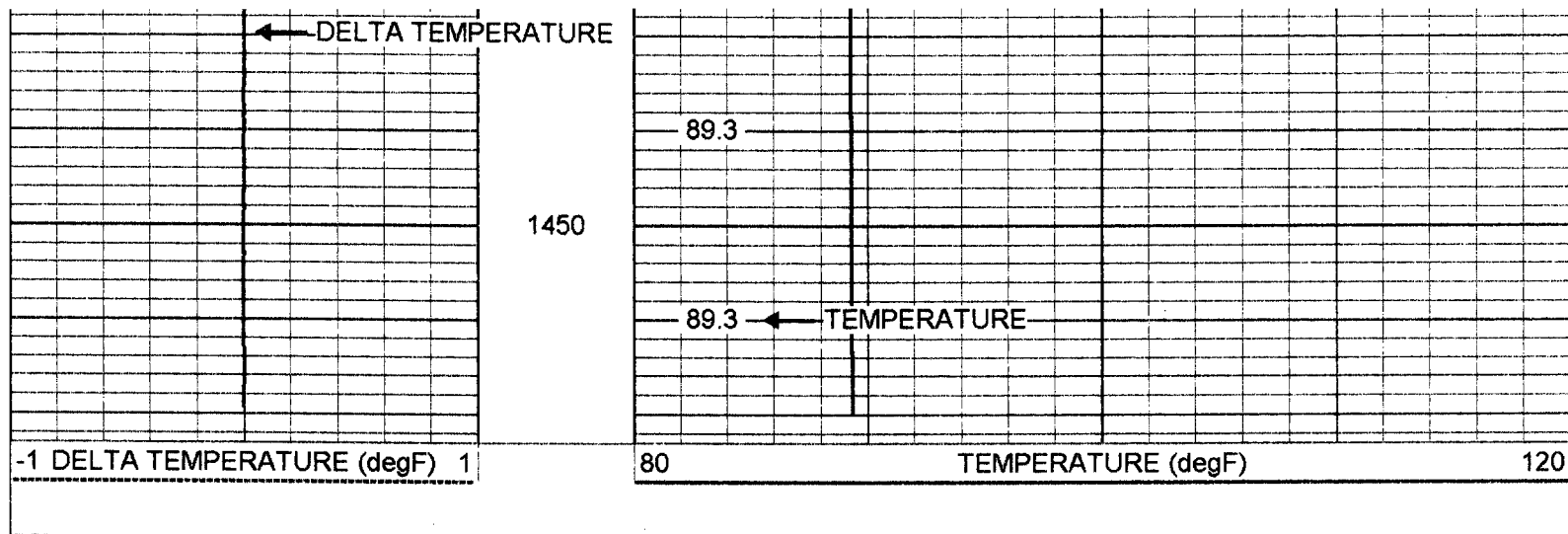


TEMPERATURE

Database File: pidzrmw.db
 Dataset Pathname: run5/pass1
 Presentation Format: temp





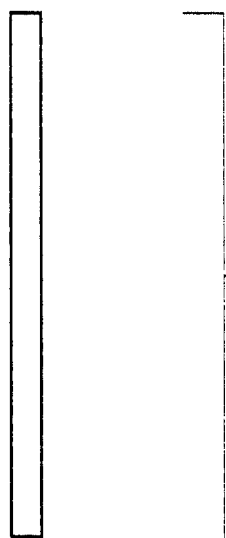


Temperature Calibration Report

Serial Number: 17
 Tool Model: MLS
 Performed: Fri Apr 04 14:49:15 2003

Point #	Reading		Reference	
1	320	cps	32	degF
2	700	cps	70	degF
3	2000	cps	200	degF
4		cps		degF
5		cps		degF
6		cps		degF
7		cps		degF
8		cps		degF
9		cps		degF
10		cps		degF

TEMP 0.25 ft



TEMP-MLS (17)
 30.00 lb 1.62 in OD 2.45 ft

Dataset: run5/pass1
 Total Length: 2.45 ft
 Total Weight: 30.00 lb
 O.D.: 1.62 in

