

Company CITY OF PORT ST. LUCIE/WESTPORT
 Well IW-1
 Field W.T.P. - WESTPORT/PSL
 County ST. LUCIE State FLORIDA
 Location
 Other Services SEE COMMENTS
 Elevation
 Permanent Datum PAD PAD
 Log Measured From PAD
 Drilling Measured From PAD
 Date 23 APR 2003
 Run Number SEVEN
 Depth Ditch 3450'
 Depth Logger 3189'
 Bottom Logged Interval 3189'
 Top Log Interval CASING
 Open Hole Size 12.25"
 Type Fluid WATER
 Density / Viscosity NA
 Max. Recorded Temp. NA
 Estimated Cement Top NA
 Time Well Ready ON ARRIVAL
 Time Logger on Bottom 1130
 Equipment Number 103
 Location FT. MYERS BARRETT/DENISON
 Recorded by L. KWAPINSKI
 Witnessed by

Run Number	Bit Size	From	To	Weight	From	To
ONE	58.50"	SURFACE	186'	FIVE	40.50'	1835'
TWO	12.25"	CASING	750'	SIX	12.25"	3450'
THREE	48.50"	CASING	750'			
FOUR	12.25"	CASING	1900'			

Casing Record: 50' Surface String, 42' Production String
 Weight: 375 W.T., 375 W.T.
 Top: SURFACE SURFACE
 Bottom: 182', 733', 1830'

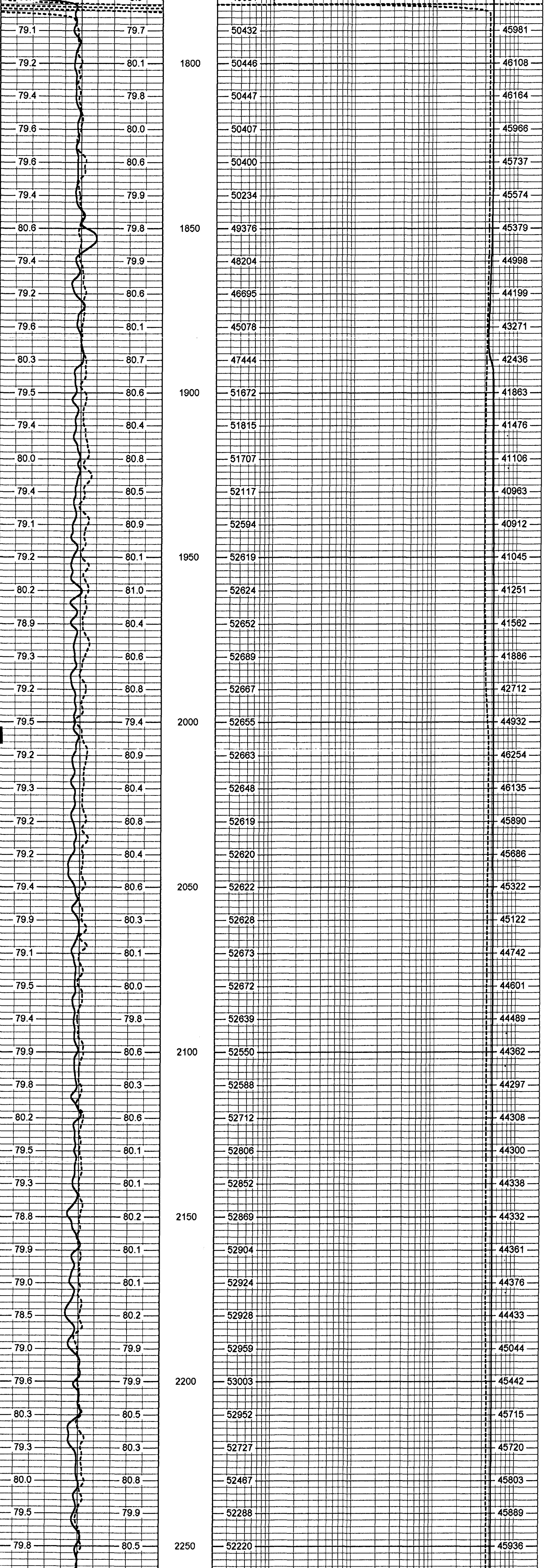
Comments

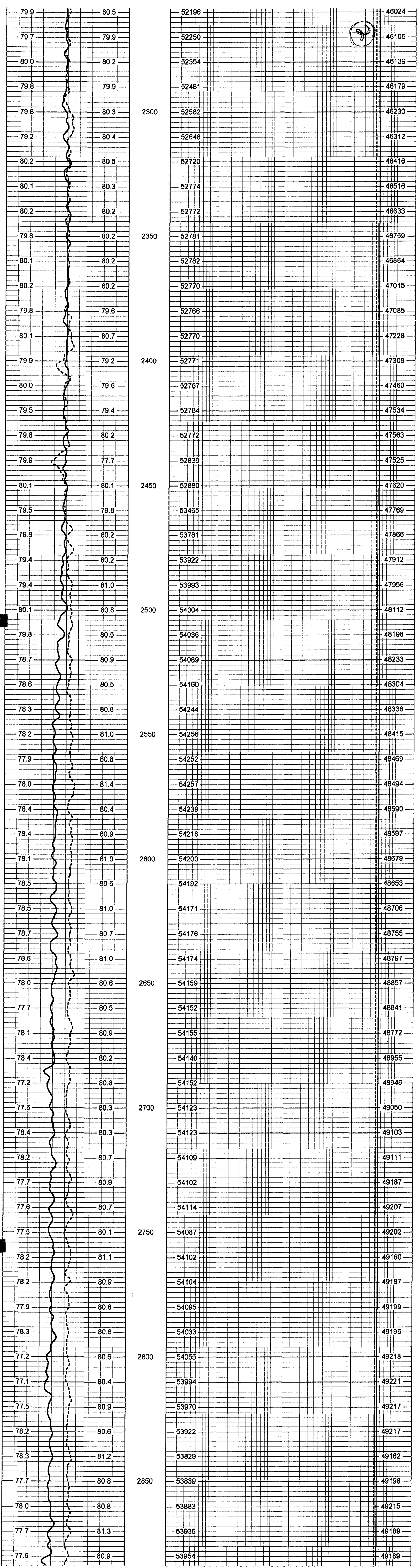
OTHER SERVICES:
 FLOWMETER
 X-Y CALIPER
 DUAL INDUCTION
 VIDEO
 BOREHOLE COMPENSATED SONIC
 FLOWRATE = 200 GPM

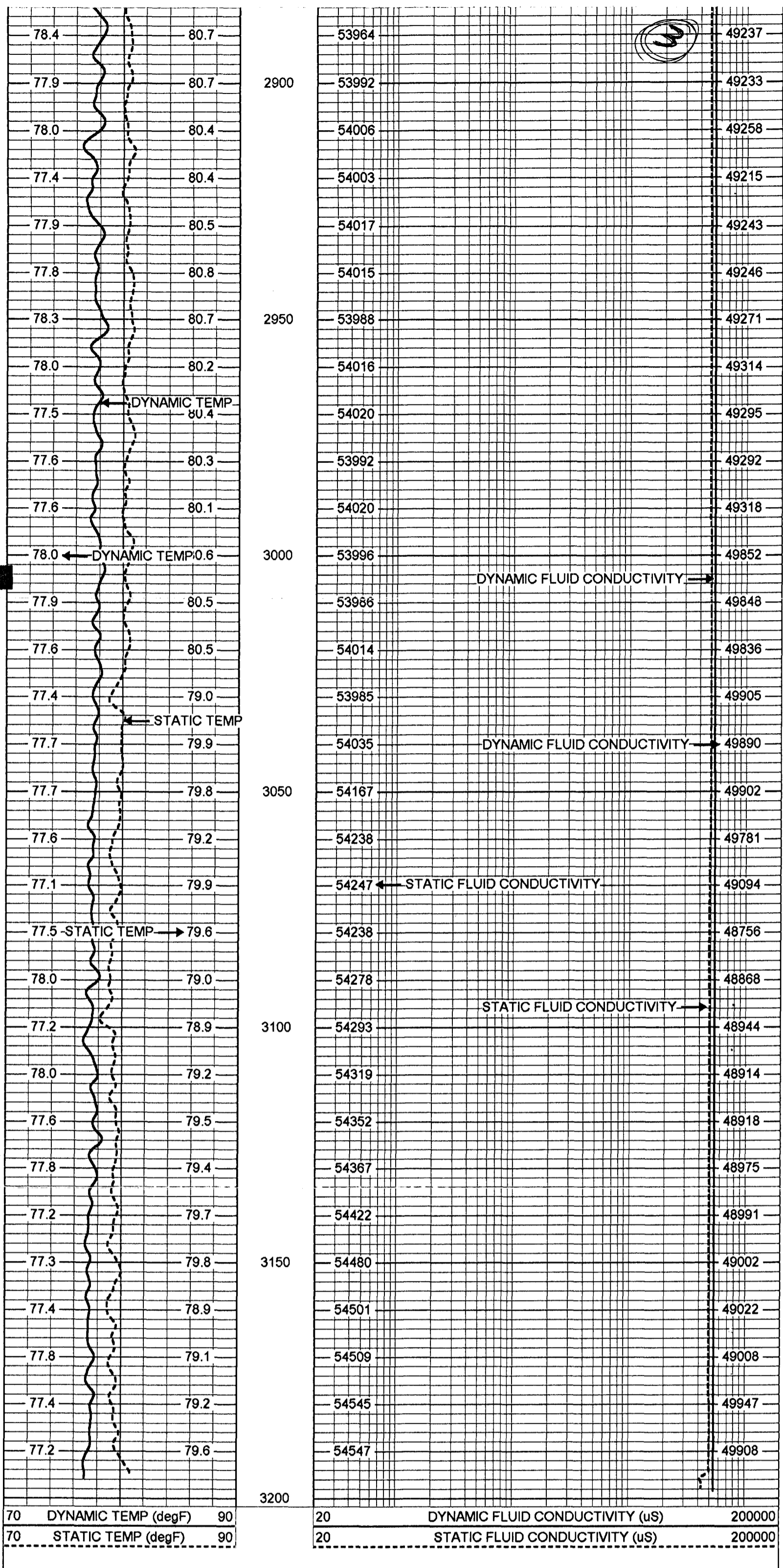
YOUNGQUIST BROTHERS, Inc
 GEOPHYSICAL LOGGING DIVISION
MERGED FCT/TEMP

Database File: wpiw1.db
 Dataset Pathname: Run7/PASS15
 Presentation Format: frt_mg
 Dataset Creation: Thu Apr 24 11:20:42 2003 by Log 6.2_B4
 Charted by: Depth in Feet scaled 1:240

70	DYNAMIC TEMP (degF)	90	20	DYNAMIC FLUID CONDUCTIVITY (uS)	200000
70	STATIC TEMP (degF)	90	20	STATIC FLUID CONDUCTIVITY (uS)	200000







FRT Calibration Report

Serial Number:	30		
Tool Model:	SONDEX		
Performed:	Tue Apr 15 10:25:31 2003		
Point #	Reading		Reference
1	32.596	cps	1000.000
2	175.215	cps	10000.000
3	425.338	cps	25000.000
4	947.399	cps	50000.000
5		cps	
6		cps	

Temperature Calibration Report

Serial Number:	30			
Tool Model:	SONDEX			
Performed:	Fri Apr 04 09:46:01 2003			
Point #	Reading		Reference	
1	121.963	cps	36	degF
2	312.065	cps	79	degF
3	608.77	cps	136	degF

