

Company CITY OF PORT ST. LUCIE  
 Well IW-1  
 Field WESTPORT WWTP/PSL  
 County ST LUCIE  
 State FLORIDA

Location  
 Permanent Datum PAD  
 Log Measured From PAD  
 Drilling Measured From PAD

Elevation  
 COMMENTS  
 SEE

Date	02-APRIL-2003
Run Number	SIX
Depth Driller	1820'
Depth Logger	1820'
Bottom Logged Interval	1820'
Top Log Interval	CASING
Open Hole Size	40.5"
Type Fluid	WATER
Density / Viscosity	NA
Max. Recorded Temp.	NA
Estimated Cement Top	NA
Time Well Ready	0000
Time Logger on Bottom	0000
Equipment Number	102
Location	FT MYERS
Recorded By	LEE
Witnessed By	S. DURALL

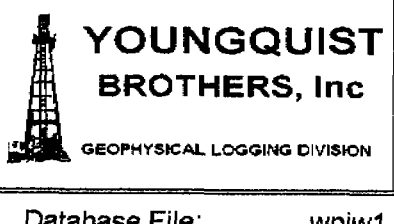
Borehole Record		Tubing Record	
Run Number	Bit	From	To
ONE	58.50"	SURFACE	FIVE
TWO	12.25"	CASING	755'
THREE	48.50"	CASING	755'
FOUR	12.25"	CASING	1900'
Casing Record	Size	Weight	From
Surface String	50"	375 W.T.	182'
Prod. String	42"	375 W.T.	755'
Production String	34"	500 W.T.	1820'
Liner			

<< Fold Here >>>

All interpretations are opinions based on inferences from electrical or other measurements and we cannot and do not guarantee the accuracy or correctness of any interpretation, and we shall not, except in the case of gross or willful negligence on our part, be liable or responsible for any loss, costs, damages, or expenses incurred or sustained by anyone resulting from any interpretation made by any of our officers, agents or employees. These interpretations are also subject to our general terms and conditions set out in our current Price Schedule.

Comments

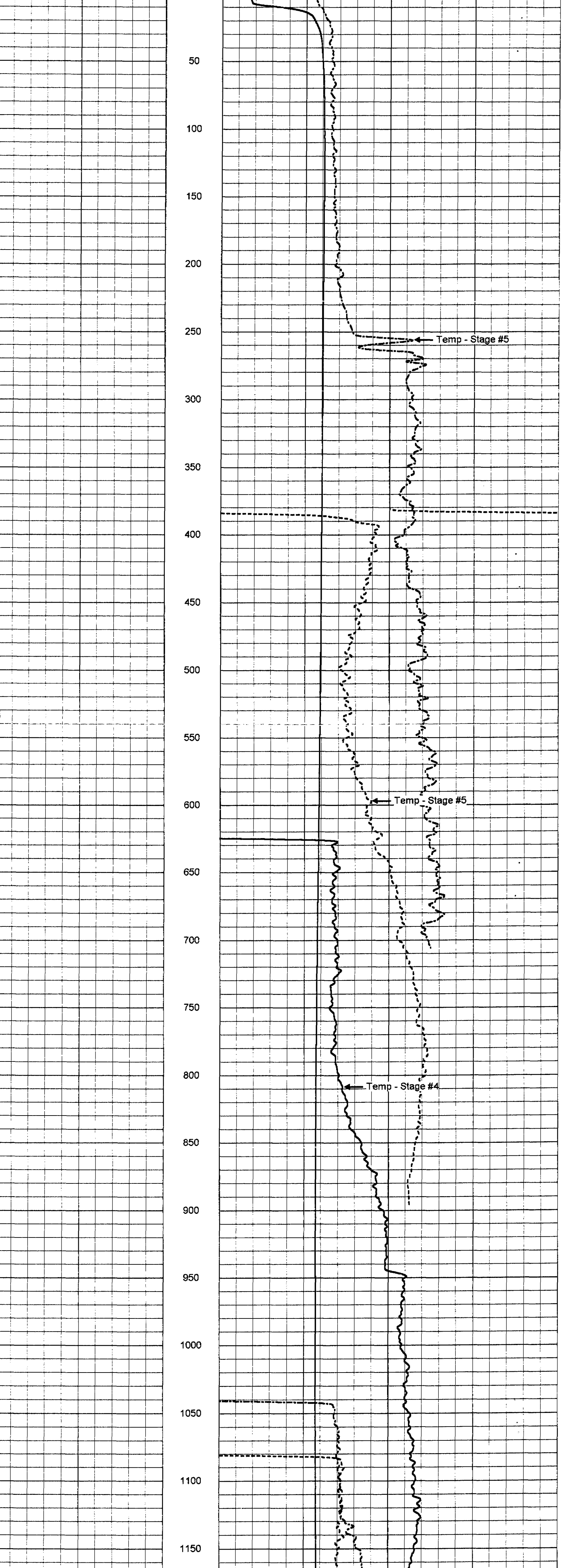
NONE

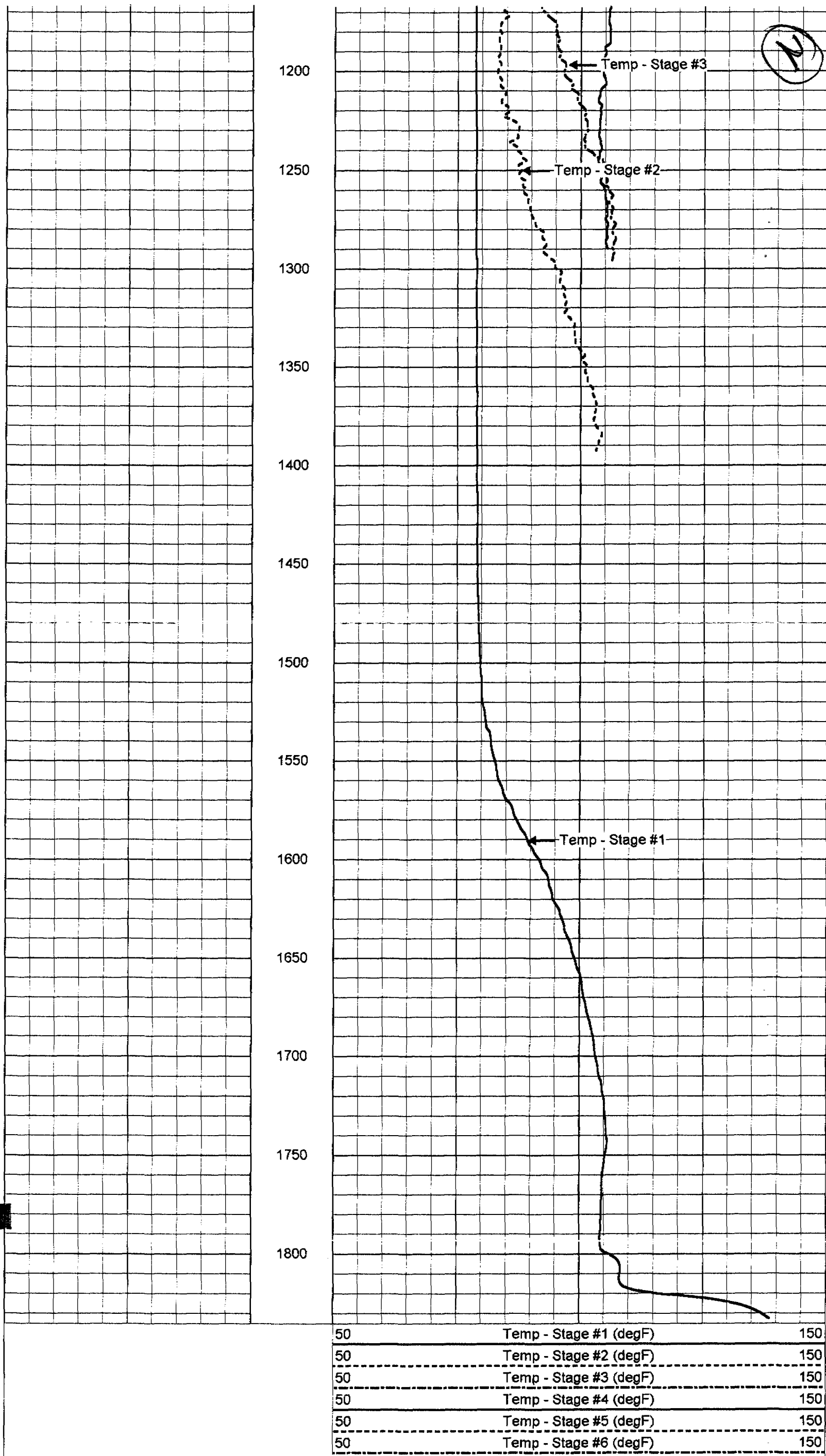


# STAGE #1

Database File: wpiw1.db  
 Dataset Pathname: Run6/CTL1  
 Presentation Format: cll\_mg  
 Dataset Creation: Mon Mar 31 10:28:52 2003 by Log 6.2\_B4  
 Charted by:

50	Temp - Stage #1 (degF)	150
50	Temp - Stage #2 (degF)	150
50	Temp - Stage #3 (degF)	150
50	Temp - Stage #4 (degF)	150
50	Temp - Stage #5 (degF)	150
50	Temp - Stage #6 (degF)	150





Temperature Calibration Report				
		Serial Number:	15	
		Tool Model:	MLS	
		Performed:	Sun Mar 23 02:55:59 2003	
Point #	Reading		Reference	
1	0		0	degF
2	283.882	cps	35	degF
3	848.398	cps	165	degF

