

Company CITY OF PORT ST. LUCIE
 Well IW-1
 Field WESTPORT WWTP/PSL
 County ST. LUCIE
 State FLORIDA

Date	16-MAR-2003	Permanent Datum	PAD	Elevation	
Run Number	FOUR	Log Measured From	PAD	K.B.	
Depth Driller	19007	Drilling Measured From	PAD	D.F.	
Depth Logger	19007			G.I.	
Bottom Logged Interval	19007				
Top Log Interval	CASING				
Open Hole Size	12.25"				
Type Fluid	WATER				
Density / Viscosity	NA				
Max. Recorded Temp.	NA				
Estimated Cement Top	NA				
Time Well Ready	ON ARRIVAL				
Time Logger on Bottom	0530				
Equipment Number	103				
Location	FT MYERS				
Recorded By	FERGUSON				
Missessed By	S. DURRALL				

<<< Fold Here >>>

All interpretations are opinions based on inferences from electrical or other measurements and we cannot and do not guarantee the accuracy or correctness of any interpretation, and we shall not, except in the case of gross or willful negligence on our part, be liable or responsible for any loss, costs, damages, or expenses incurred or sustained by anyone resulting from any interpretation made by any of our officers, agents or employees. These interpretations are also subject to our general terms and conditions set out in our current Price Schedule.

Comments

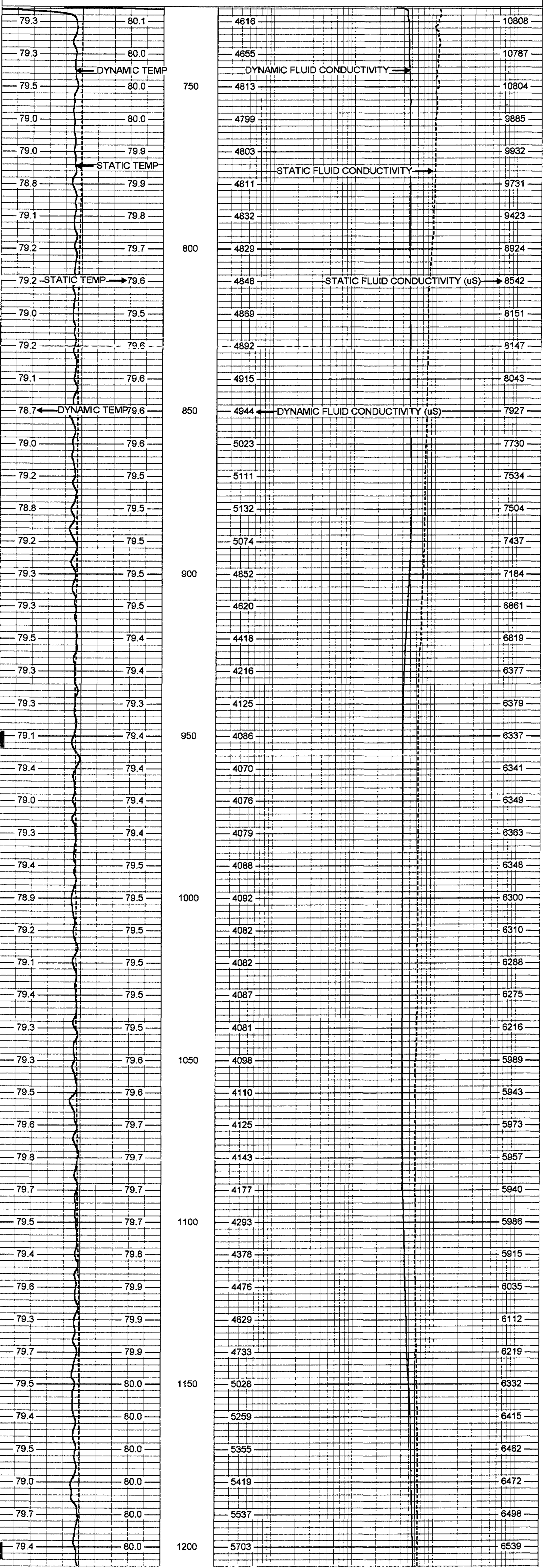
OTHER SERVICES:
 FLOWMETER
 X-Y CALIPER
 DUAL INDUCTION
 BOREHOLE TELEVIEWER

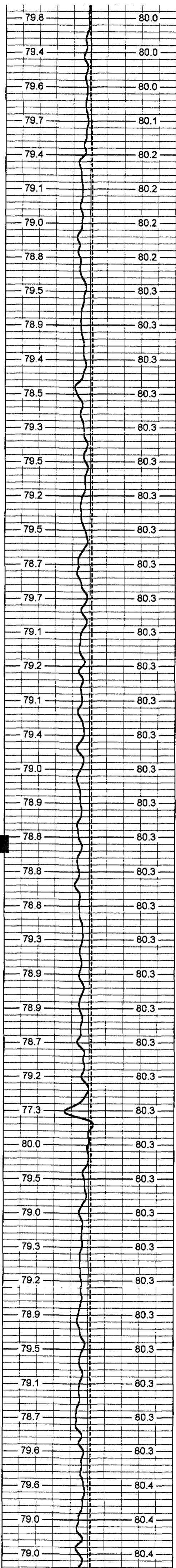
FLOWRATE = 400 GPM
 BOREHOLE COMPENSATED SONIC

MERGED DYNAMIC FCT

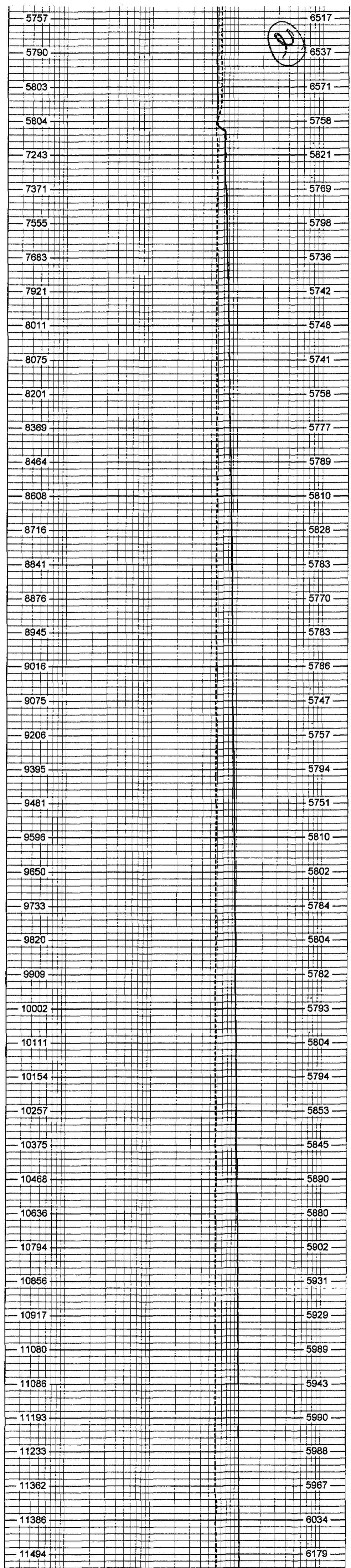
Database File: wpiw1.db
 Dataset Pathname: Run4/Pass13
 Presentation Format: frt_mg
 Dataset Creation: Sun Mar 16 18:28:23 2003 by Log 6 2_B4
 Charted by: Depth in Feet scaled 1:240

70	DYNAMIC TEMP (degF)	90	20	DYNAMIC FLUID CONDUCTIVITY (uS)	200000
70	STATIC TEMP (degF)	90	20	STATIC FLUID CONDUCTIVITY (uS)	200000

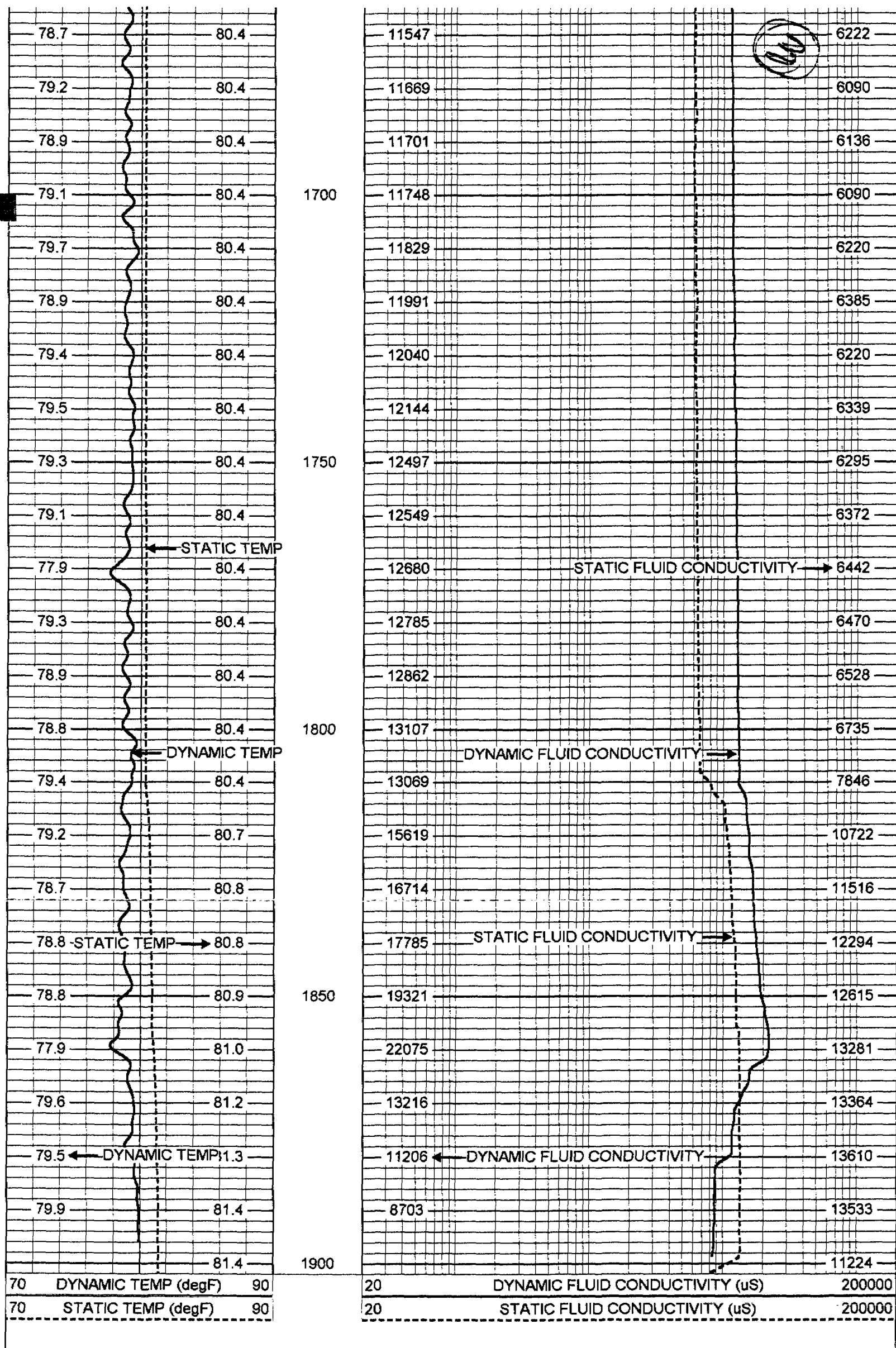




1250
1300
1350
1400
1450
1500
1550
1600
1650



(S)



FRT Calibration Report

Serial Number: 30
 Tool Model: SONDEX
 Performed: Mon May 07 16:59:04 2001

Point #	Reading	Reference
1	38.604 cps	1000.000
2	332.194 cps	10000.000
3	1502.090 cps	50000.000
4	cps	
5	cps	
6	cps	

Temperature Calibration Report

Serial Number: 30
 Tool Model: SONDEX
 Performed: Sun Mar 16 01:28:06 2003

Point #	Reading	Reference
1	187.965 cps	48 degF
2	601.466 cps	137 degF
3	cps	degF

