



**YOUNGQUIST BROTHERS, Inc**  
GEOPHYSICAL LOGGING DIVISION

**FLUID CONDUCTIVITY TEMPERATURE LOG**

Company **HAZEN & SAWYER**  
Well **IW #2**  
Field **S. CTY RGL WTP R/O EXP**  
County **COLLIER**  
State **FL**

Company **HAZEN & SAWYER**  
Well **IW #2**  
Field **SOUTH CTY REGIONAL WTP R/O EXP**  
County **COLLIER** State **FLORIDA**

Permanent Datum	PAD	Elevation	Other Services SEE COMMENTS
Log Measured From	GROUND LEVEL	Elevation	
Drilling Measured From			K.B. D.F. G.L.

Date	1-JUNE-2002	
Run Number	SIX	
Depth Driller	3205'	
Depth Logger	2636'	
Bottom Logged Interval	2636'	
Top Log Interval	SURFACE	
Open Hole Size	12.25"	
Type Fluid	WATER	
Density / Viscosity	N/A	
Max. Recorded Temp.	91 F	
Estimated Cement Top	N/A	
Time Well Ready	ON ARRIVAL	
Time Logger on Bottom	1300	
Equipment Number	103	
Location	FT MYERS DENISON	
Recorded By	T. TUBBERT	
Witnessed By	F. PROCTA	

Borehole Record		Tubing Record	
Run Number	Bit	From	To
ONE	48.5"	SURFACE	335'
THREE	12.25"	CASING	1400'
FOUR	40.5"	CASING	1305'
FIVE	12.25"	CASING	3205'
Casing Record	Size	Wgt/Ft	
Surface String	60"	500 W.T.	
Prot. String	42"	375 W.T.	
Production String	34"	375 W.T.	
Liner			
		Top	Bottom
		SURFACE	10'
		SURFACE	330'
		SURFACE	1300'

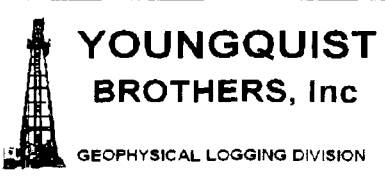
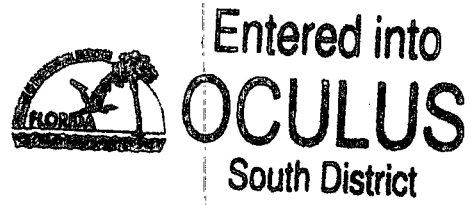
<<< Fold Here >>>

All interpretations are opinions based on inferences from electrical or other measurements and we cannot and do not guarantee the accuracy or correctness of any interpretation, and we shall not, except in the case of gross or willful negligence on our part, be liable or responsible for any loss, costs, damages, or expenses incurred or sustained by anyone resulting from any interpretation made by any of our officers, agents or employees. These interpretations are also subject to our general terms and conditions set out in our current Price Schedule.

**Comments**

DYNAMIC FLOWRATE = 600 GPM

OTHER SERVICES:  
X-Y CALIPER/GAMMA RAY  
DUAL INDUCTION  
BOREHOLE COMPENSATED SONIC FLOWMETER  
VIDEO

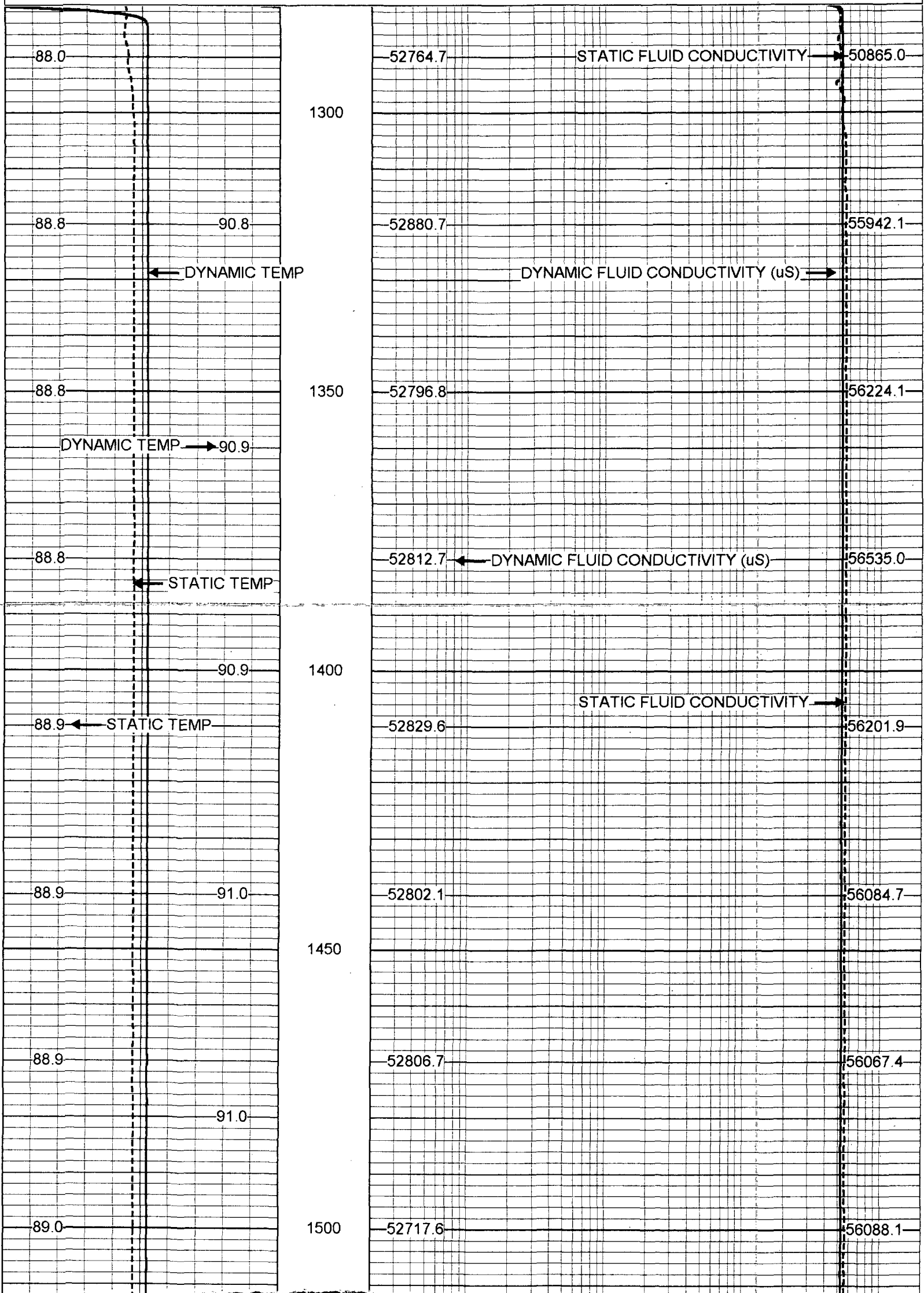


**MERGED COND/TEMP**

Database File: scriw2.db  
Dataset Pathname: run6/pass13  
Presentation Format: frt\_mg.prs

70 DYNAMIC TEMP (degF) 110  
 70 STATIC TEMP (degF) 110

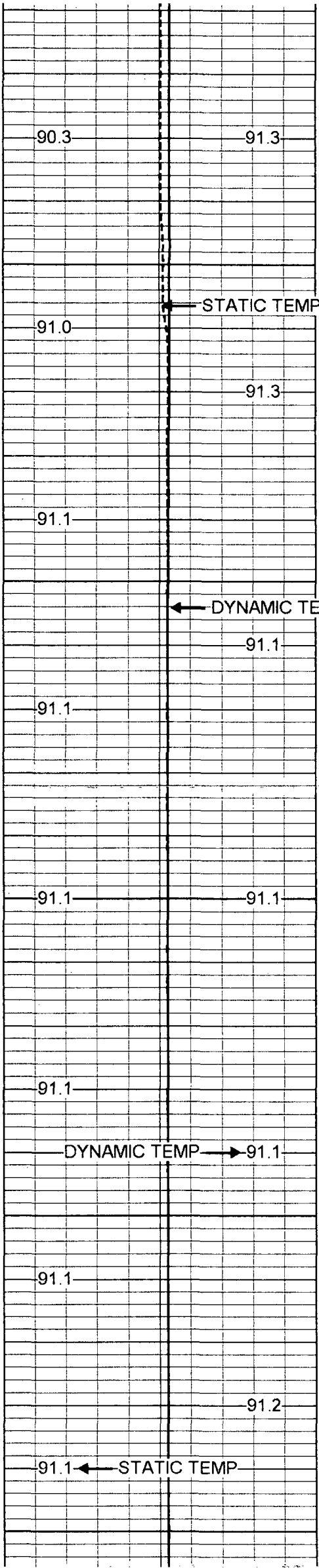
20 DYNAMIC FLUID CONDUCTIVITY (uS) 200000  
 20 STATIC FLUID CONDUCTIVITY (uS) 200000





89.3			52670.9	55936.3
89.3	91.2	1800	52451.9	55921.8
89.3			52644.1	55989.8
	91.2			
89.3		1850	52582.9	55906.6
	91.2			
89.4			52620.5	55846.8
		1900		
89.4	91.2		52328.5	56037.2
89.5			52690.4	56020.7
	91.2	1950		
89.5			52624.8	56099.2
	91.3	2000		

Left Column	Second Column	Third Column	Fourth Column	Right Column
89.7	91.3	2050	52641.9	55978.9
89.8	91.3		52641.3	55771.2
90.0	91.3	2100	52722.8	55769.2
90.1	91.3		52873.8	55782.1
90.1	91.3	2150	52678.9	55815.6
90.2	91.3		52830.1	55697.7
90.3	91.3	2200	52796.3	55655.8
90.3	91.3	2250	52930.6	55648.1



2300

2350

2400

2450

2500

STATIC TEMP

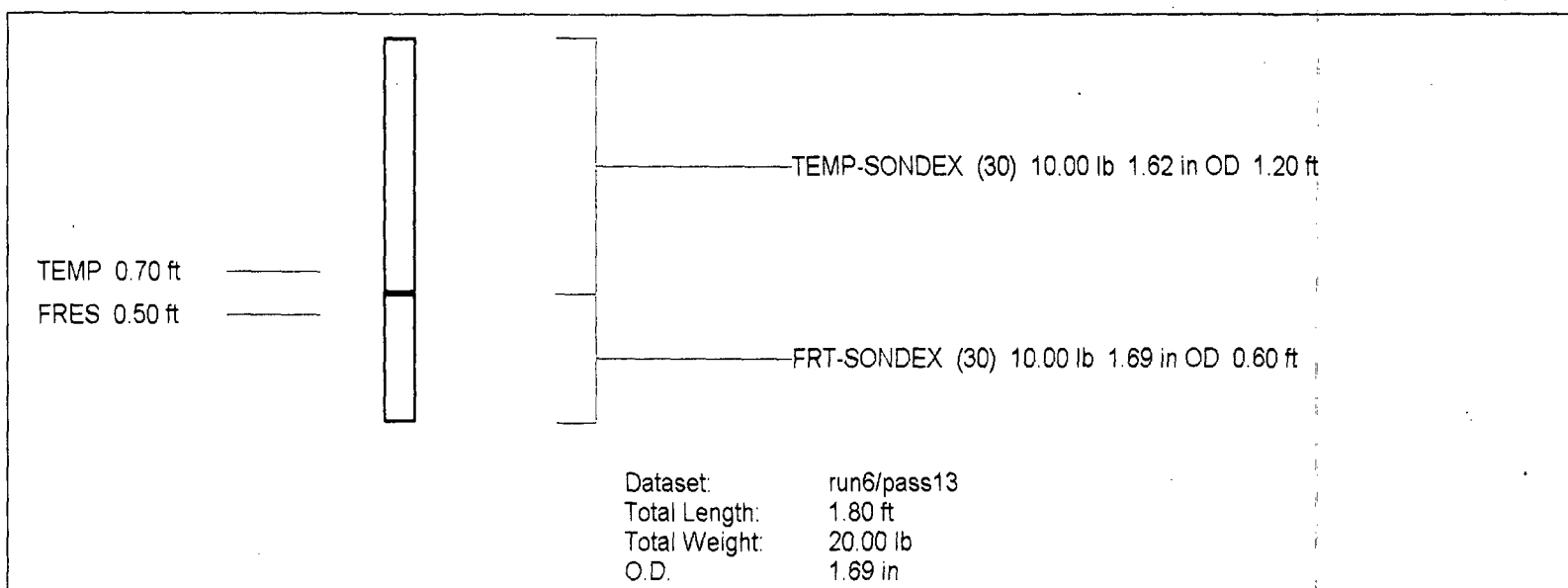
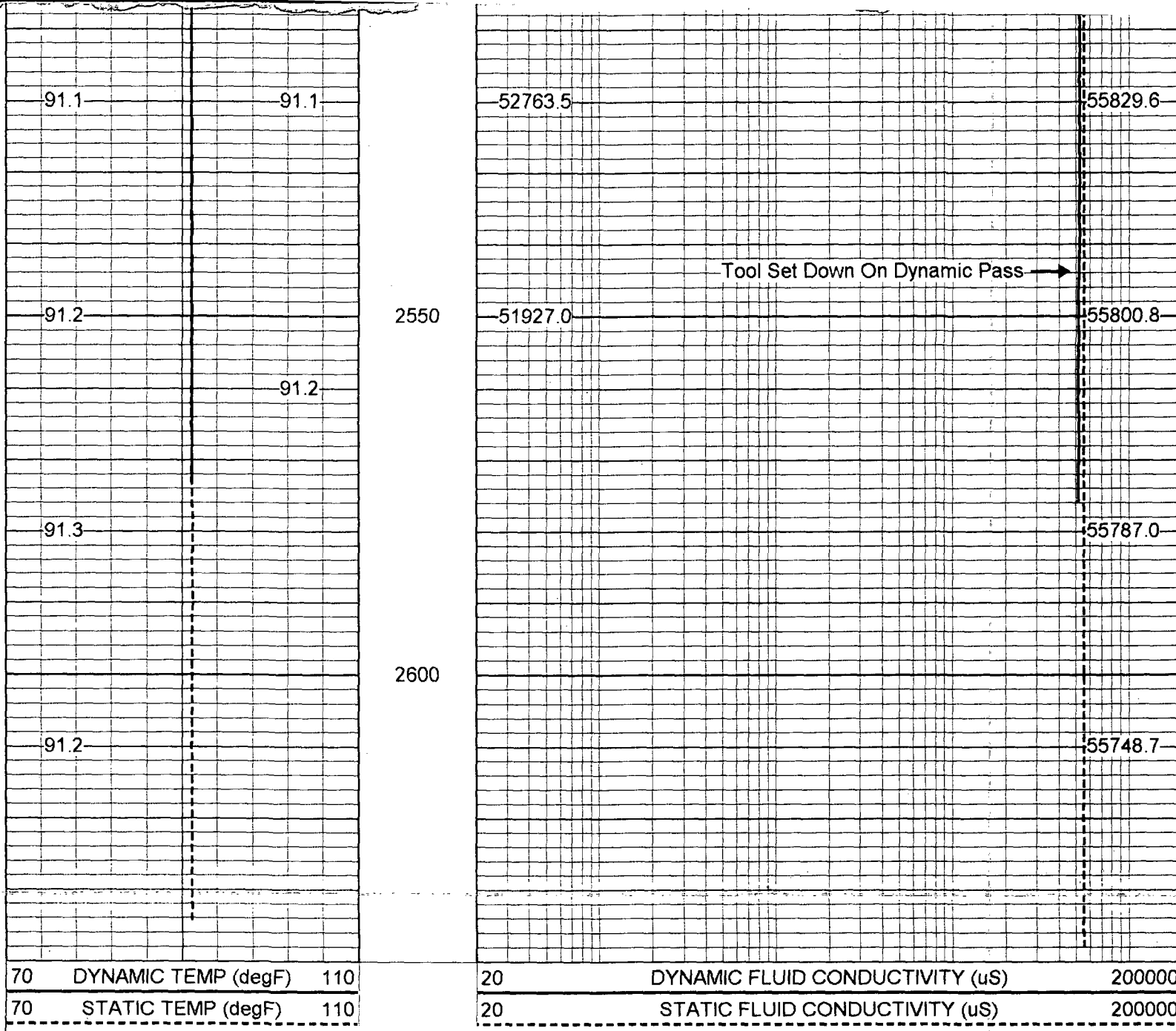
DYNAMIC TEMP

DYNAMIC FLUID CONDUCTIVITY

DYNAMIC FLUID CONDUCTIVITY

STATIC FLUID CONDUCTIVITY (μS)

STATIC FLUID CONDUCTIVITY (μS)



FRT Calibration Report		
Serial Number:	30	
Tool Model:	SONDEX	
Performed:	Thu Apr 18 14:47:29 2002	
Point #	Reading	Reference

1	42.904	cps	1000.000
2	309.469	cps	10000.000
3	858.679	cps	25000.000
4	1742.780	cps	50000.000
5	3177.680	cps	70000.000
6		cps	

Temperature Calibration Report

Serial Number: 30  
Tool Model: SONDEX  
Performed: Thu Apr 18 13:26:57 2002

Point #	Reading		Reference	
1	109.698	cps	34	degF
2	681.903	cps	150	degF
3		cps		degF