



**YOUNGQUIST
BROTHERS, Inc**

**FLUID CONDUCTIVITY
TEMPERATURE
LOG**

GEOPHYSICAL LOGGING DIVISION

Company HAZEN & SAWYER
Well IW - 1
Field S. CTY RGL WTP R/O EXP
County COLLIER
State FL

Company HAZEN & SAWYER
Well IW - 1
Field S. CTY REGIONAL WTP R/O EXP
County COLLIER
State FLORIDA

Location	Permanent Datum	Elevation	Other Services
	Log Measured From	PAD	SEE
	Drilling Measured From	GROUND LEVEL	REMARKS
			Elevation
			K.B.
			D.F.
			G.L.

Date	11/29/01
Run Number	THREE
Depth Driller	1420'
Depth Logger	1420'
Bottom Logged Interval	1420'
Top Log Interval	CASING
Open Hole Size	12.25"
Type Fluid	WATER
Density / Viscosity	N/A
Max. Recorded Temp.	N/A
Estimated Cement Top	N/A
Time Well Ready	0830
Time Logger on Bottom	0900
Equipment Number	103
Location	FT. MYERS
Recorded By	FERGUSON
Witnessed By	N. KUGLER

Borehole Record		Tubing Record	
Run Number	Bit	From	To
ONE	48.5"	SURFACE	336'
TWO	12.25"	CASING	1420'

Casing Record	Size	Wgt/Ft	Top	Bottom
Surface String	42"	375 W.T.	SURFACE	330'
Prot. String				
Production String				
Liner				

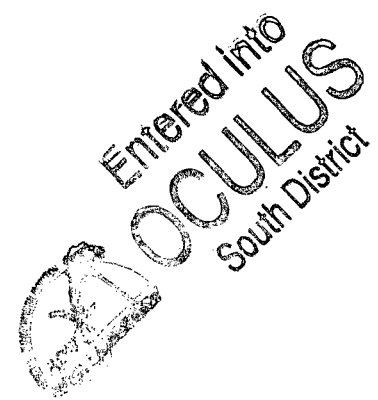
<<< Fold Here >>>

All interpretations are opinions based on inferences from electrical or other measurements and we cannot and do not guarantee the accuracy or correctness of any interpretation, and we shall not, except in the case of gross or willful negligence on our part, be liable or responsible for any loss, costs, damages, or expenses incurred or sustained by anyone resulting from any interpretation made by any of our officers, agents or employees. These interpretations are also subject to our general terms and conditions set out in our current Price Schedule.

Comments

DYNAMIC FLOWRATE = 250 GPM

OTHER SERVICES:
DUAL INDUCTION LL3/SP
X-Y CALIPER/GAMMA RAY
FLOWMETER
BOREHOLE COMPENSATED SONIC



MERGED FLUID COND/TEMP

Database File: scriw1.db
Dataset Pathname: run3/pass23
Presentation Format: frt_mg.prs
Dataset Creation: Thu Nov 29 10:36:11 2001 by log MER 5.4

Charted by:

Depth in Feet scaled 1:1200

70	DYNAMIC TEMP (degF)	110
70	STATIC TEMP (degF)	110

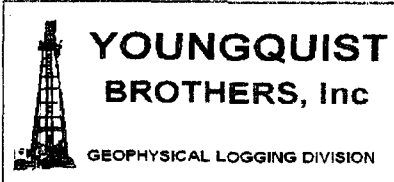
20	DYNAMIC FLUID CONDUCTIVITY (uS)	200000
20	STATIC FLUID CONDUCTIVITY (uS)	200000

79.8	81.9
79.5	81.9
80.3	81.5
79.6	81.7
79.4	82.2
79.4	82.1
79.5	82.0
79.3	82.1
79.7	82.3
79.3	82.2
79.6	82.3
79.7	82.2
79.4	82.2
79.5	82.4
79.5	82.2
79.5	82.4
79.2	82.4
79.6	82.3
79.2	82.9
79.2	82.6
79.2	82.8
79.2	83.0
79.4	82.7
79.3	83.1
78.9	82.7
79.2	83.0
79.2	83.1
79.1	83.2
79.2	82.9
79.3	82.8
79.3	82.8
79.3	82.9
79.3	83.1
79.3	82.6
79.1	82.3
79.1	82.7
79.3	83.1
79.0	82.8
79.2	83.4
79.1	83.3
79.2	82.5
79.1	82.5
79.3	82.6
79.2	81.9
79.5	81.9
79.5	82.1
79.6	82.3
79.7	82.0
79.6	81.9
79.4	81.1
79.3	81.3
79.8	81.5
79.9	81.9
80.3	81.8
80.3	81.6

300	2814	6518
	2993	6788
350	4728	6551
	6020	6698
	5906	6596
400	5772	6773
	5856	6765
450	5462	6756
	5094	6811
500	5081	6870
	5254	6993
550	5321	6947
	5230	6816
600	5037	6971
	4717	6984
650	4674	7052
	4753	7102
700	4953	7536
	5013	8000
750	5037	7970
	4942	7658
800	4951	7857
	4797	8126
850	4576	8033
	4442	8194
900	4244	8149
	3546	8259
950	2952	8145
	2774	7696
1000	2520	6916
	2473	6651
1050	2260	6368
	2187	6064
1100	2096	6193
	1980	6109
1150	1898	6409
	1819	6603
1200	1752	6769
	1696	6918
1250	1725	7136
	1775	6595
1300	1772	7418
	1770	8166
1350	1780	6985
	1773	7679
1400	1724	9251
	1773	9635
	1714	7607
	1741	5382
	1717	2240
	1730	2011
	1710	1914
	1690	1825
	1739	1777
	1690	1724
	1655	1790

70	DYNAMIC TEMP (degF)	110
----	---------------------	-----

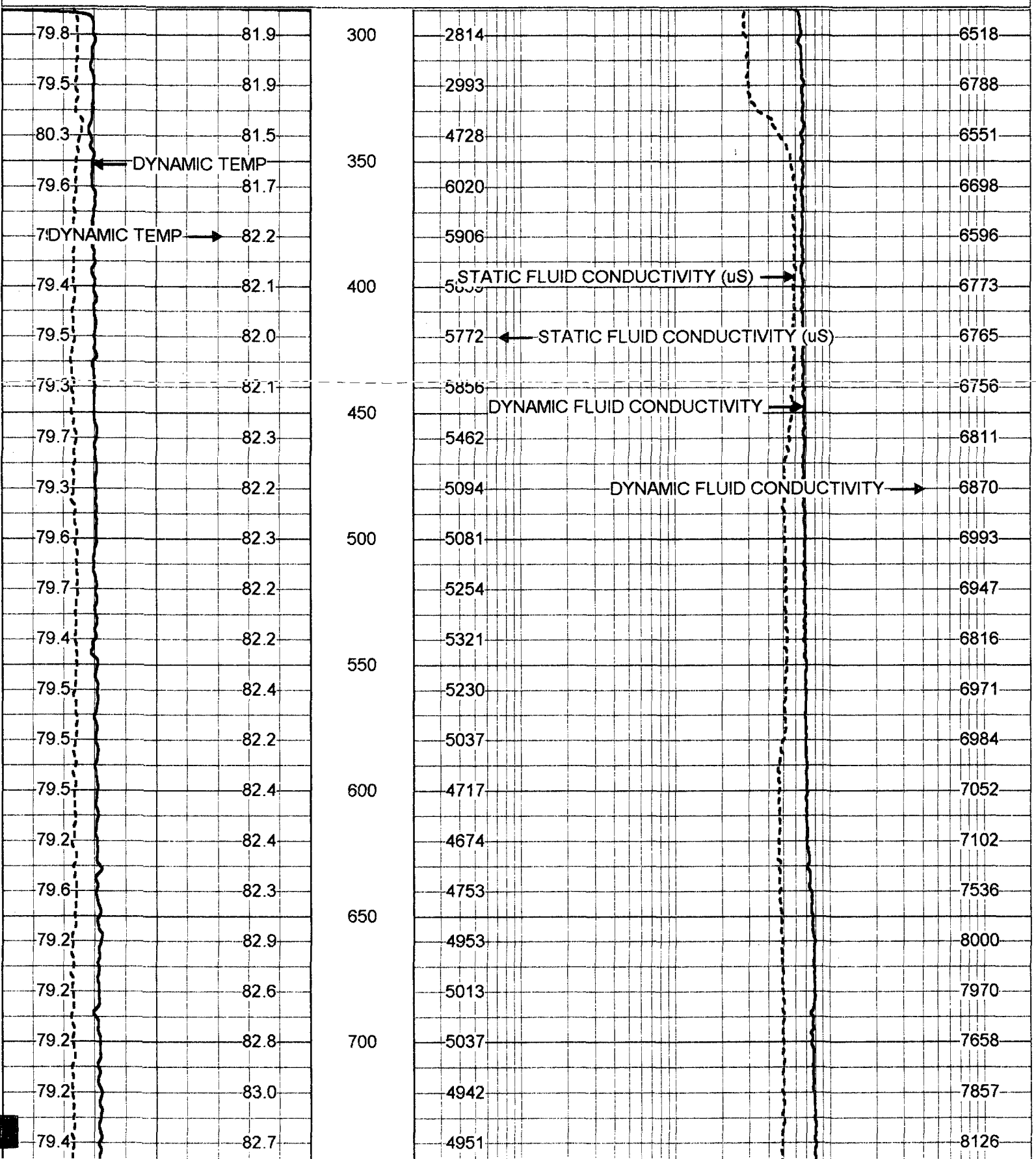
20	DYNAMIC FLUID CONDUCTIVITY (uS)	200000
----	---------------------------------	--------

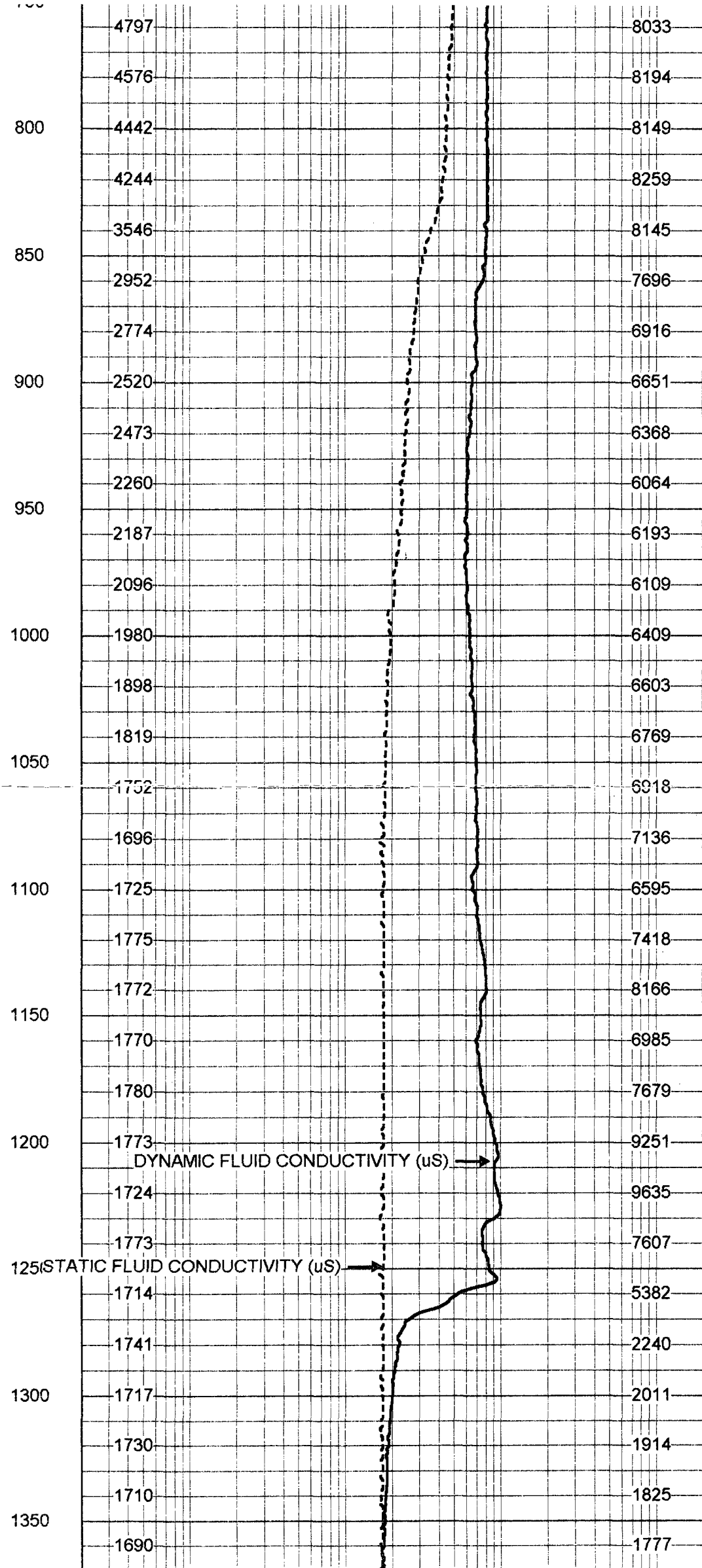
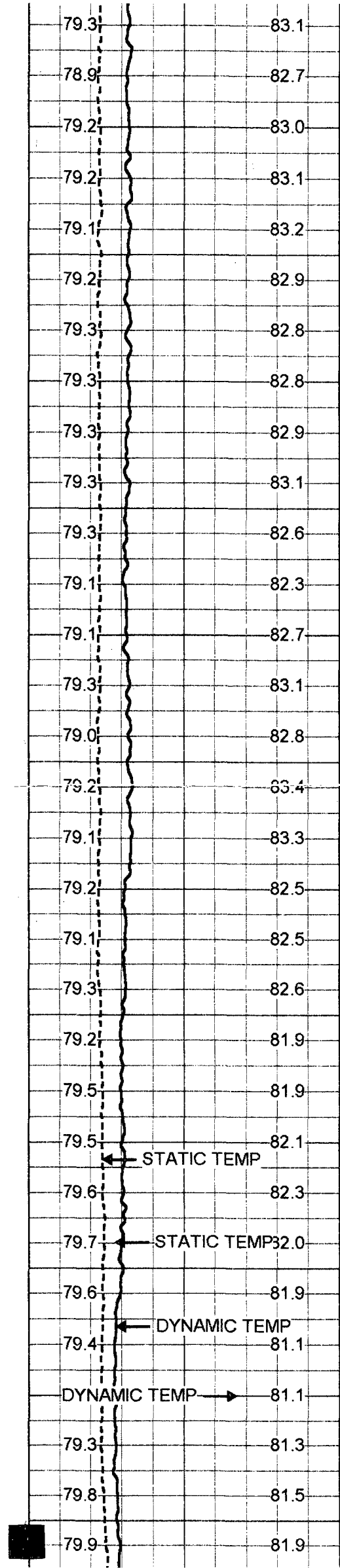


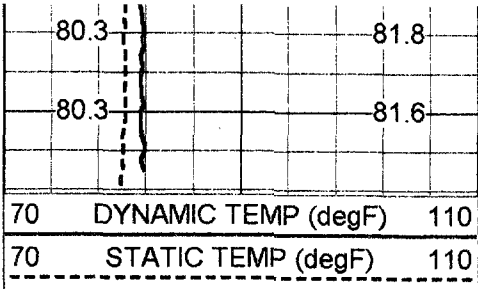
MERGED FLUID COND/TEMP

Database File: scriw1.db
 Dataset Pathname: run3/pass23
 Presentation Format: frt_mg.prs
 Dataset Creation: Thu Nov 29 19:36:11 2001 by Log VER_5.4
 Charted by: Depth in Feet scaled 1:600

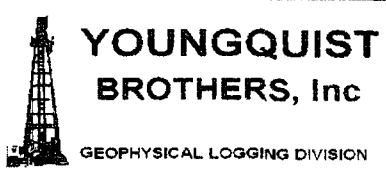
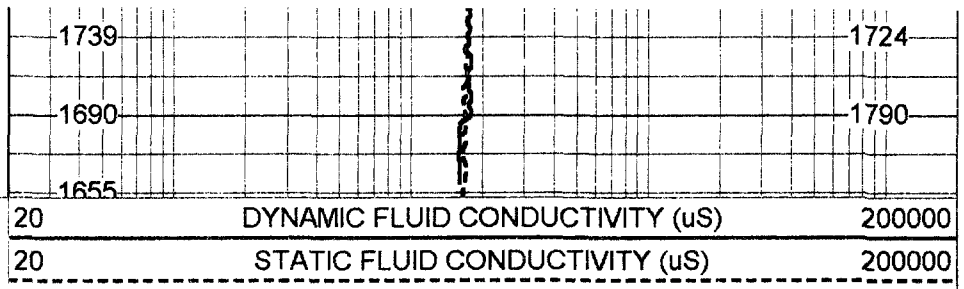
70	DYNAMIC TEMP (degF)	110	20	DYNAMIC FLUID CONDUCTIVITY (uS)	200000
70	STATIC TEMP (degF)	110	20	STATIC FLUID CONDUCTIVITY (uS)	200000







1400

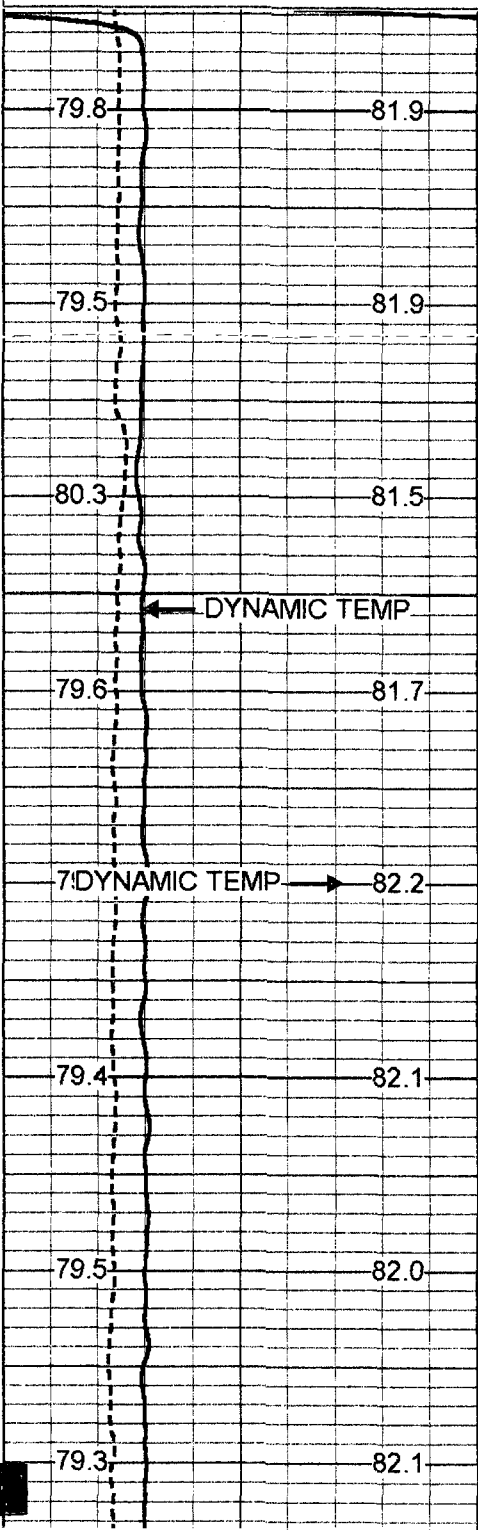


MERGED FLUID COND/TEMP

Database File: scriw1.db
 Dataset Pathname: run3/pass23
 Presentation Format: frt_mg.prs
 Dataset Creation: Thu Nov 29 19:36:11 2001 by Log VER_5.4
 Charted by: Depth in Feet scaled 1:240

70	DYNAMIC TEMP (degF)	110
70	STATIC TEMP (degF)	110

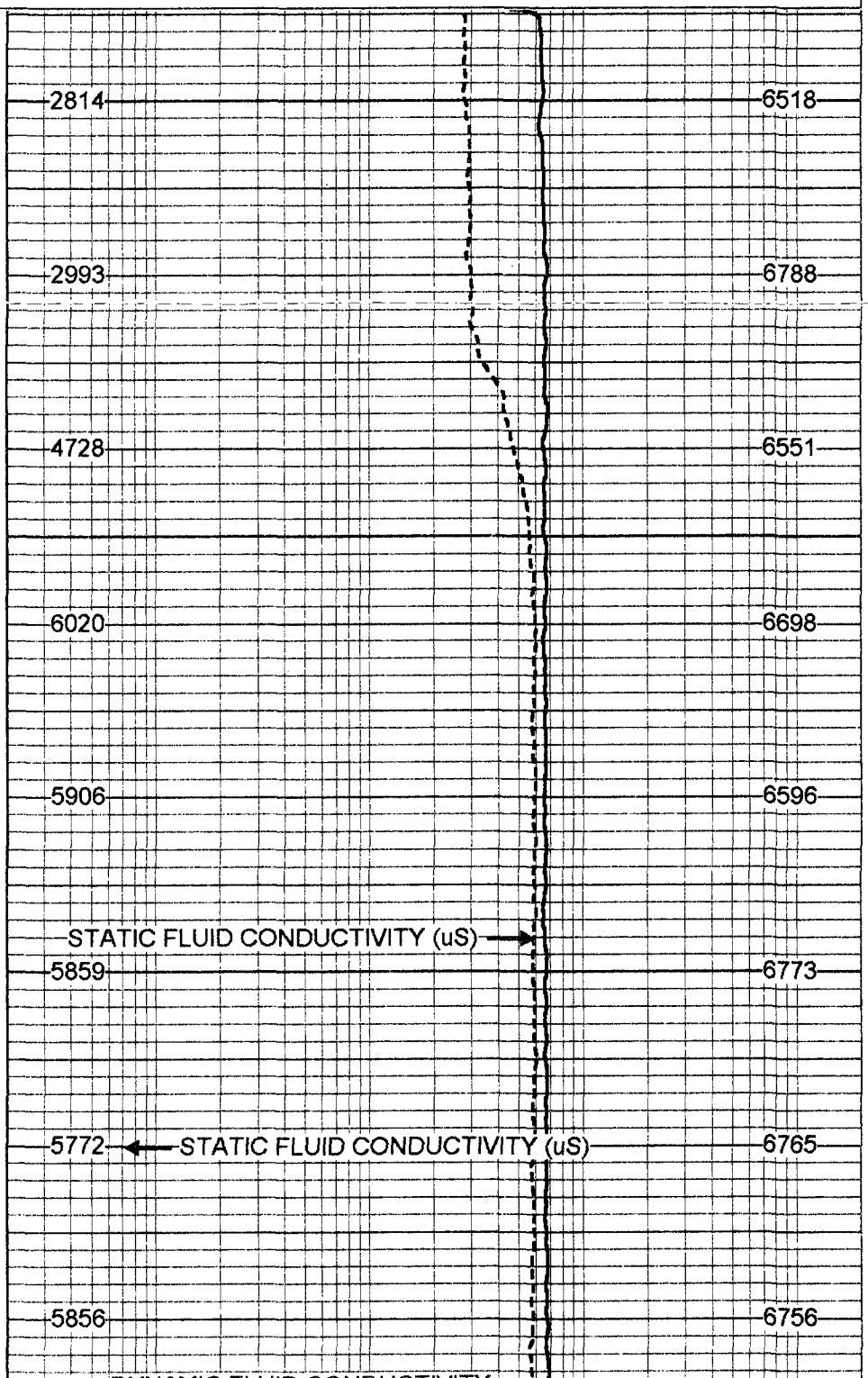
20	DYNAMIC FLUID CONDUCTIVITY (uS)	200000
20	STATIC FLUID CONDUCTIVITY (uS)	200000

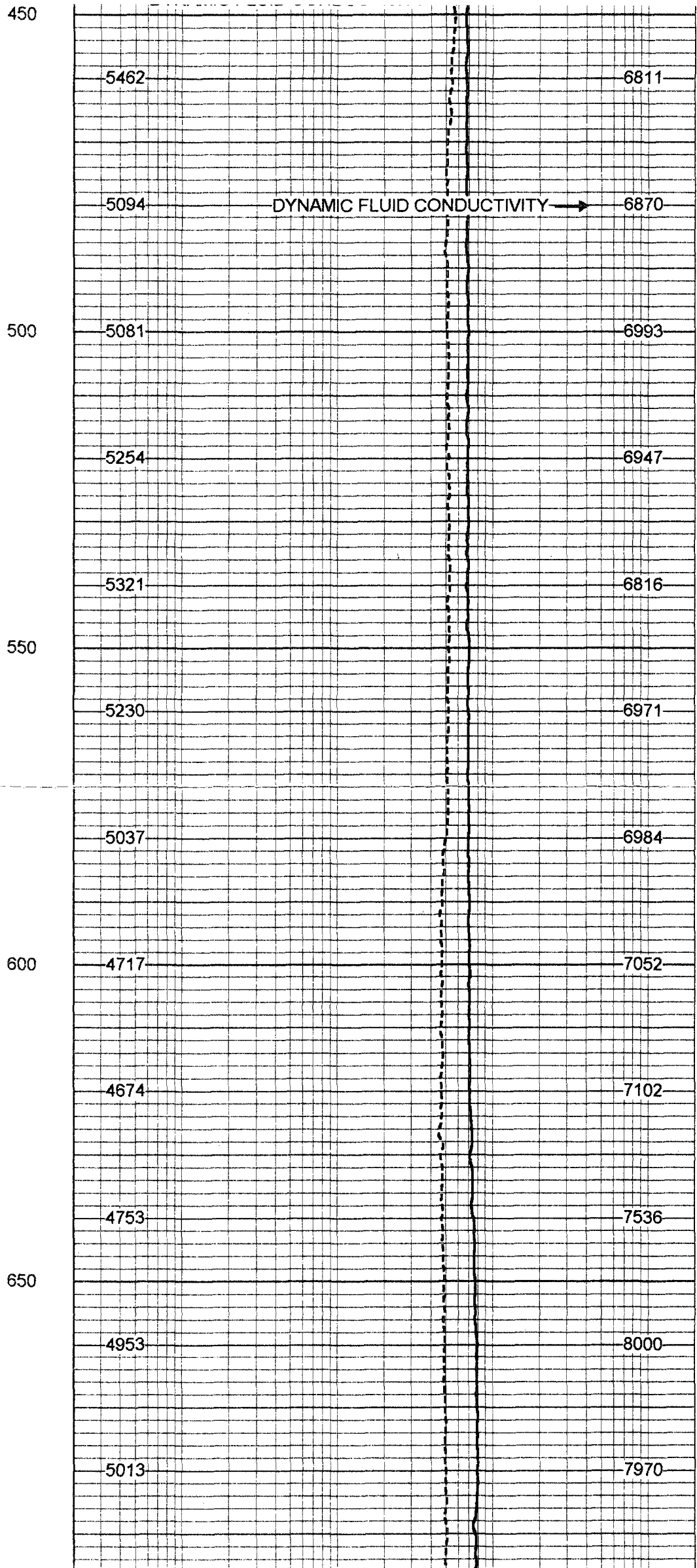
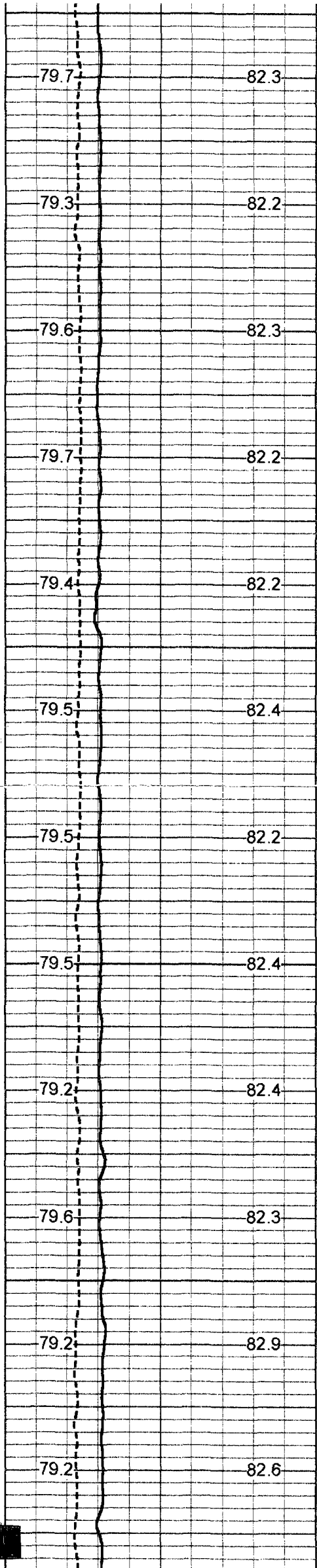


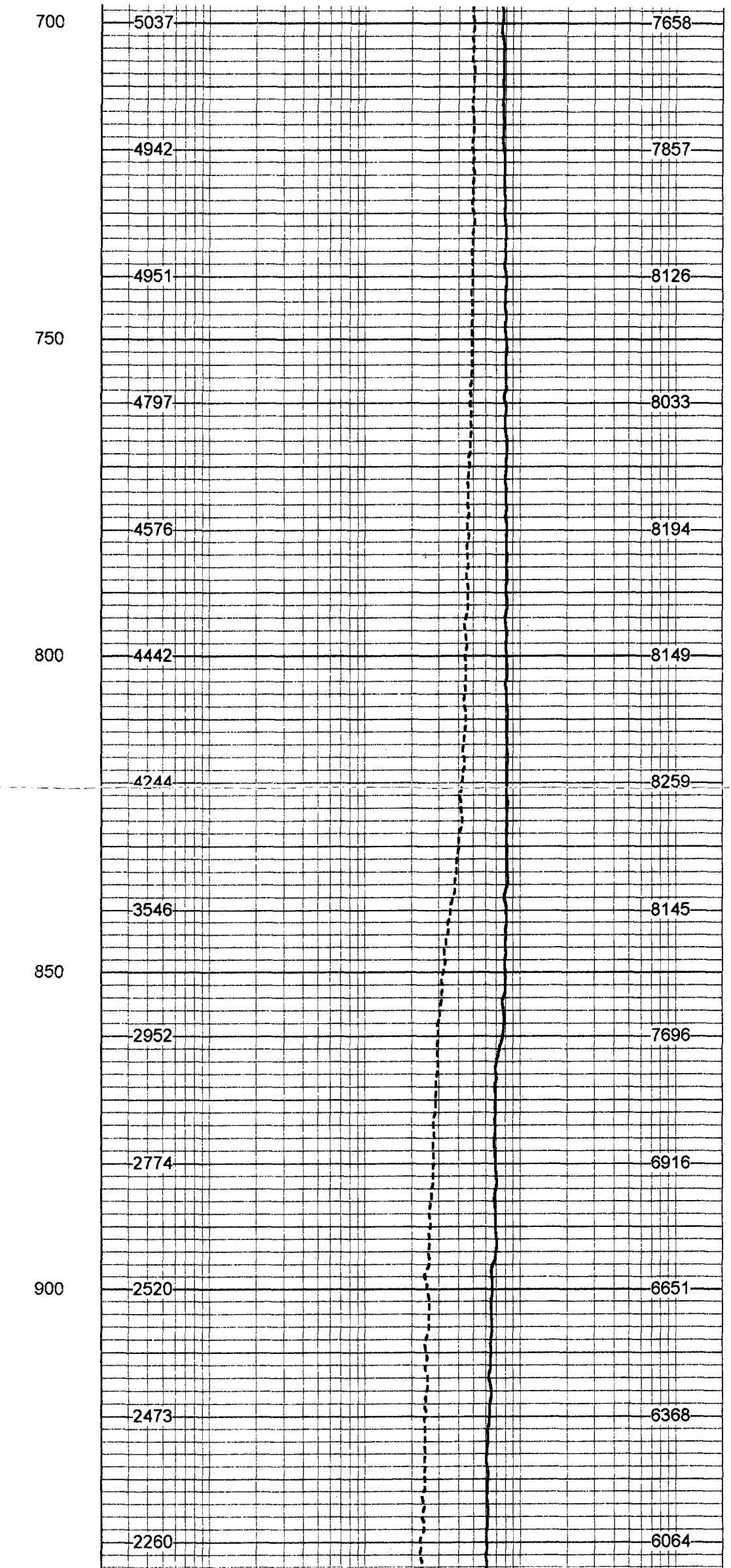
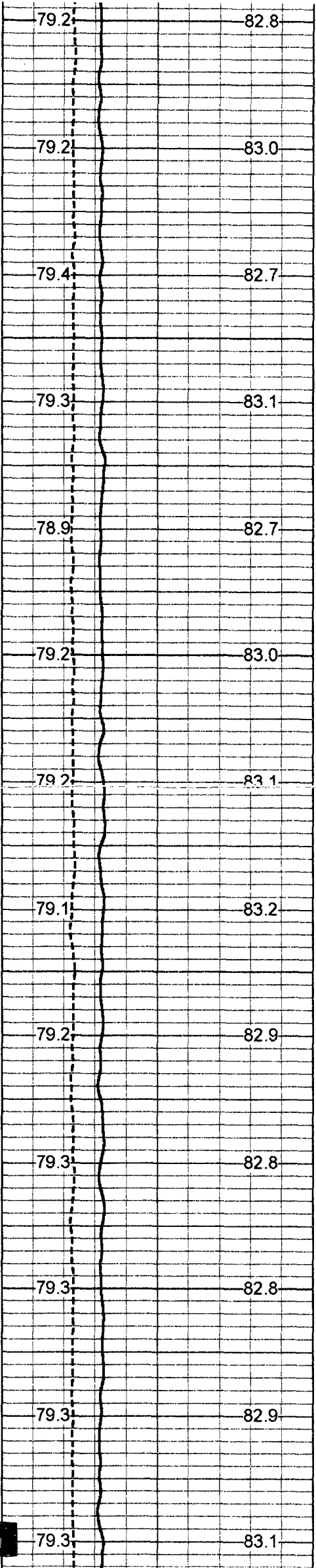
300

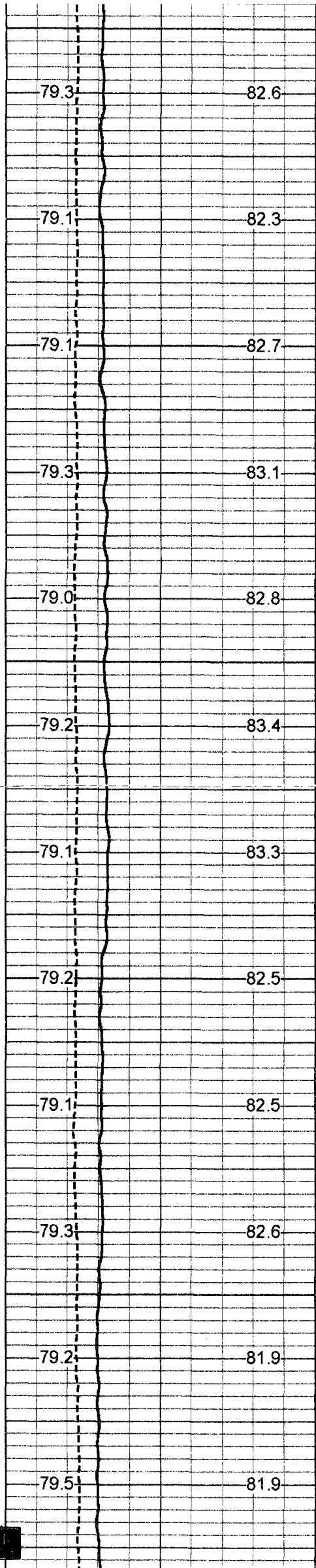
350

400









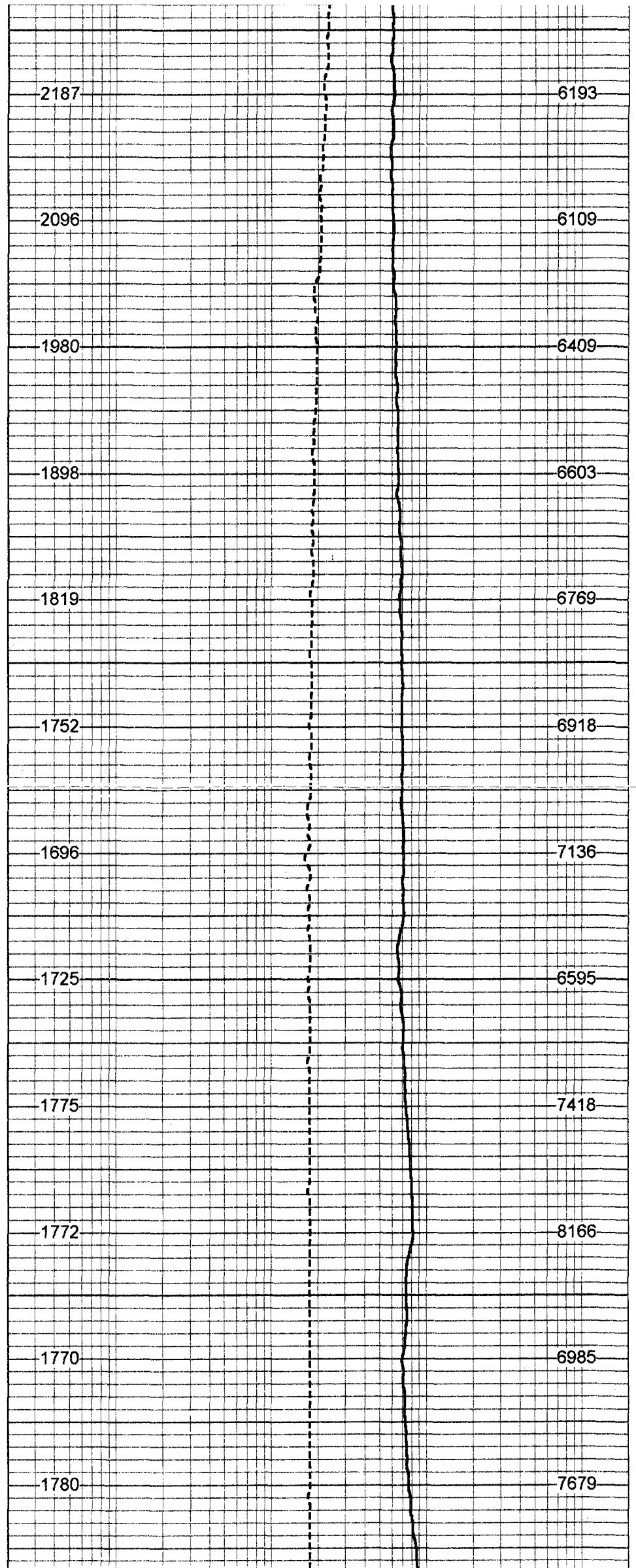
950

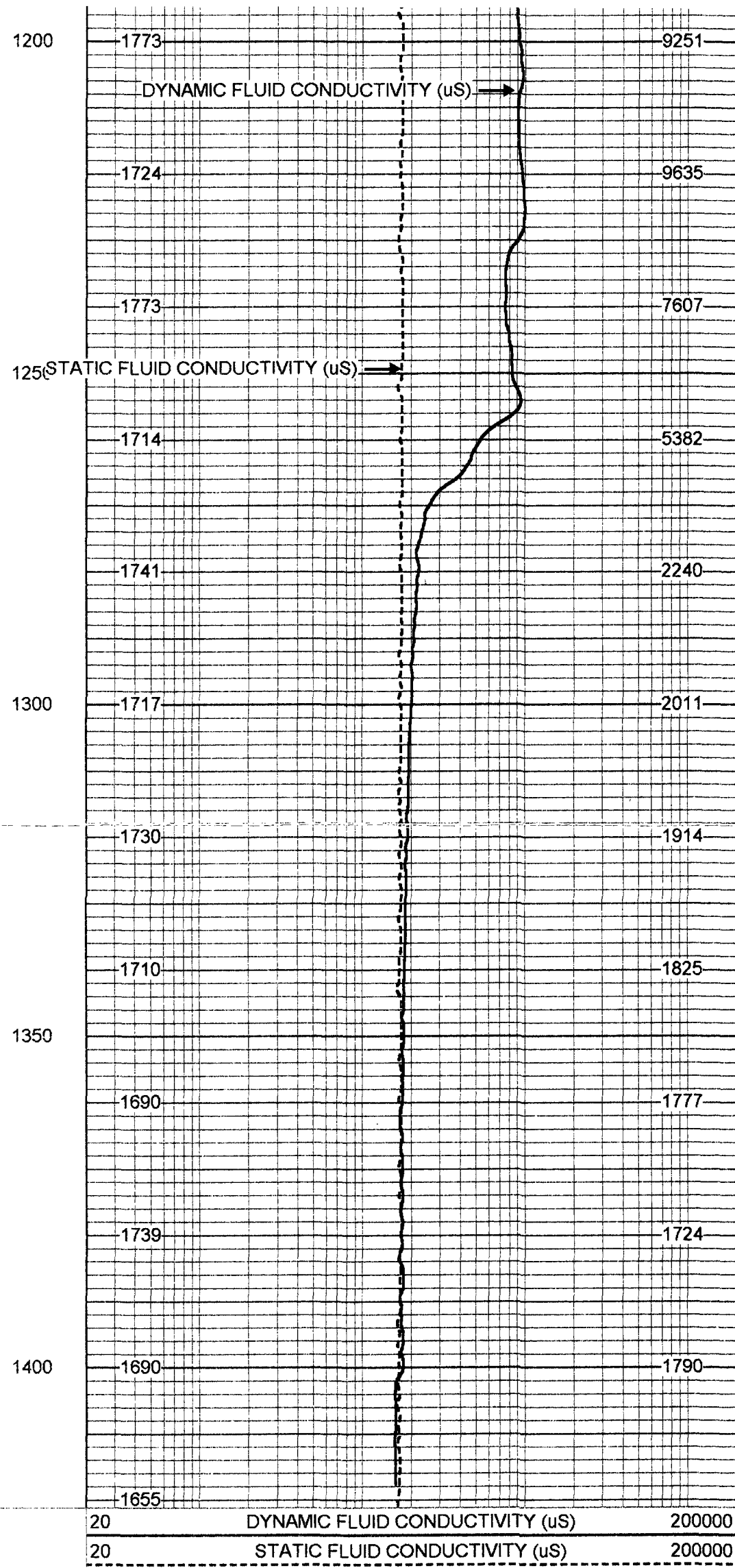
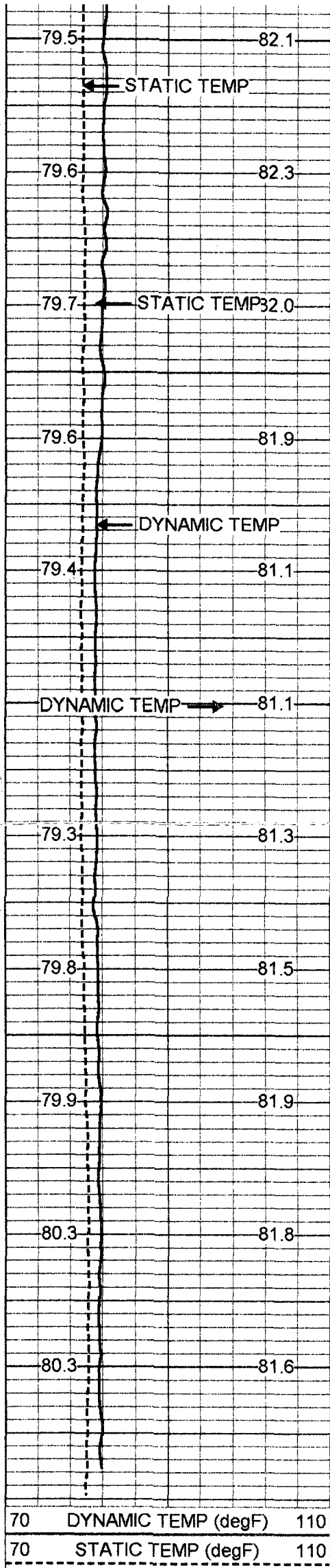
1000

1050

1100

1150





70 DYNAMIC TEMP (degF) 110
 70 STATIC TEMP (degF) 110

20 DYNAMIC FLUID CONDUCTIVITY (uS) 200000
 20 STATIC FLUID CONDUCTIVITY (uS) 200000

TEMP 0.70 ft

FRES 0.50 ft



TEMP-SONDEX (31) 10.00 lb 1.62 in OD 1.20 ft

FRT-SONDEX (31) 10.00 lb 1.69 in OD 0.60 ft

Dataset: run3/pass23
 Total Length: 1.80 ft
 Total Weight: 20.00 lb
 O.D.: 1.69 in

FRT Calibration Report

Serial Number: 31
 Tool Model: SONDEX
 Performed: Mon May 07 10:39:40 2001

Point #	Reading		Reference
1	33.812	cps	1000.000
2	186.494	cps	10000.000
3	963.690	cps	50000.000
4		cps	
5		cps	
6		cps	

Temperature Calibration Report

Serial Number: 31
 Tool Model: SONDEX
 Performed: Mon May 07 15:54:58 2001

Point #	Reading		Reference	
1	120.679	cps	34	degF
2	582.95	cps	135	degF
3		cps		degF